

GSM 850: GPRS-FDD (TDMA, GMSK, TN 0-1-2), CHEEK

Room Ambient Temperature: 23.0°C, Liquid Temperature: 22.0°C

Exposure Conditions

Band	GSM 850	TSL Permittivity	40.2
Frequency [MHz] / Channel Number	836.6 / 190	TSL Conductivity [S/m]	0.924
Group / UID	GSM / 10027-DAC	Phantom Section / TSL	RightHead / HSL
Conversion Factor	8.38	Test Distance [mm]	0.00

DASY Configuration

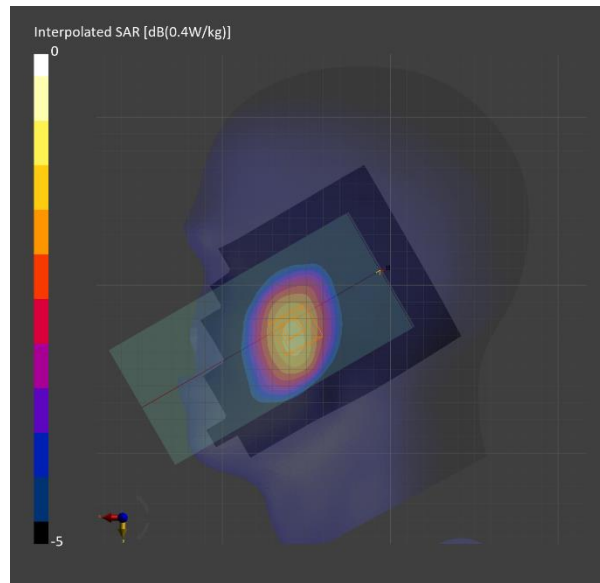
Probe Calibration Date	EX3DV4 - SN7645 2023-09-20	Phantom	Twin-SAM V8.0 (30deg probe tilt)
DAE Calibration Date	DAE4 Sn1671 2024-04-18	TSL Type	HBBL-600-10000
Software Version	16.2.2.1588		

Scan Setup

	Area Scan	Zoom Scan
Grid Extents [mm]	120.0 x 210.0	30.0 x 30.0 x 30.0
Grid Steps [mm]	15.0 x 15.0	6.0 x 6.0 x 1.5
Sensor Surface [mm]	3.0	1.4

Measurement Results

	Area Scan	Zoom Scan
psSAR1g [W/Kg]	0.277	0.296
psSAR10g [W/Kg]	0.191	0.234
Power Drift [dB]		0.02
Dist 3dB Peak [mm]		27.7
M2/M1 [%]		98.8



GSM 850: GPRS-FDD (TDMA, GMSK, TN 0-1-2), BACK

Room Ambient Temperature: 23.0°C, Liquid Temperature: 22.0°C

Exposure Conditions

Band	GSM 850	TSL Permittivity	41.8
Frequency [MHz] / Channel Number	836.6 / 190	TSL Conductivity [S/m]	0.920
Group / UID	GSM / 10027-DAC	Phantom Section / TSL	Flat / HSL
Conversion Factor	8.38	Test Distance [mm]	10.00

DASY Configuration

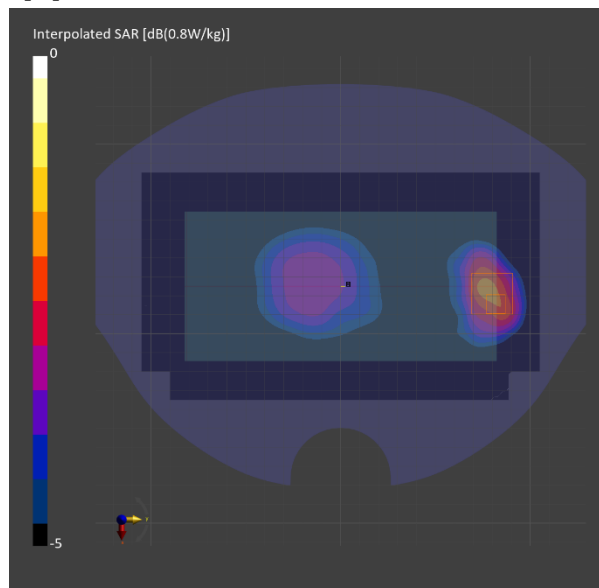
Probe Calibration Date	EX3DV4 - SN7645 2023-09-20	Phantom	Twin-SAM V8.0 (30deg probe tilt)
DAE Calibration Date	DAE4 Sn1671 2024-04-18	TSL Type	HBBL-600-10000
Software Version	16.2.2.1588		

Scan Setup

	Area Scan	Zoom Scan
Grid Extents [mm]	120.0 x 210.0	30.0 x 30.0 x 30.0
Grid Steps [mm]	15.0 x 15.0	6.0 x 6.0 x 1.5
Sensor Surface [mm]	3.0	1.4

Measurement Results

	Area Scan	Zoom Scan
psSAR1g [W/Kg]	0.450	0.473
psSAR10g [W/Kg]	0.301	0.281
Power Drift [dB]		-0.04
Dist 3dB Peak [mm]		12.3
M2/M1 [%]		77.7



GSM 1900: GPRS-FDD (TDMA, GMSK, TN 0-1-2-3), CHEEK

Room Ambient Temperature: 23.0°C, Liquid Temperature: 22.0°C

Exposure Conditions

Band	PCS 1900	TSL Permittivity	39.9
Frequency [MHz] / Channel Number	1880.0 / 661	TSL Conductivity [S/m]	1.40
Group / UID	GSM / 10028-DAC	Phantom Section / TSL	LeftHead / HSL
Conversion Factor	7.43	Test Distance [mm]	0.00

DASY Configuration

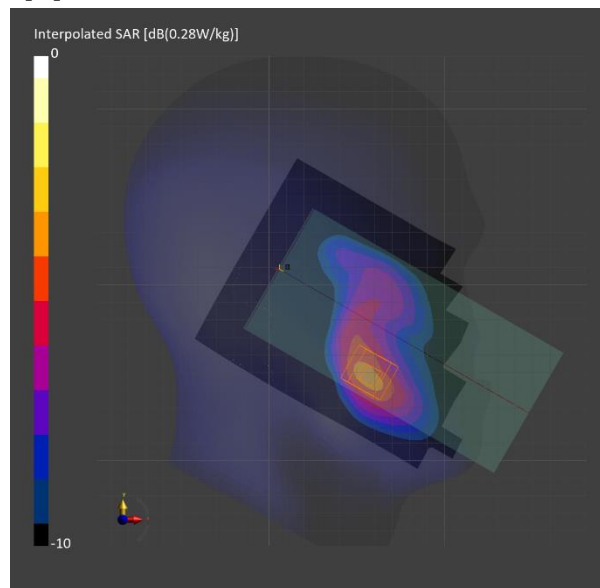
Probe Calibration Date	EX3DV4 - SN7313 2024-02-21	Phantom	Twin-SAM V8.0 (30deg probe tilt)
DAE Calibration Date	DAE4 Sn1447 2024-03-13	TSL Type	HBBL-600-10000
Software Version	16.2.2.1588		

Scan Setup

	Area Scan	Zoom Scan
Grid Extents [mm]	120.0 x 210.0	30.0 x 30.0 x 30.0
Grid Steps [mm]	15.0 x 15.0	6.0 x 6.0 x 1.5
Sensor Surface [mm]	3.0	1.4

Measurement Results

	Area Scan	Zoom Scan
psSAR1g [W/Kg]	0.095	0.099
psSAR10g [W/Kg]	0.056	0.063
Power Drift [dB]		0.10
Dist 3dB Peak [mm]		13.3
M2/M1 [%]		87.8



GSM 1900: GPRS-FDD (TDMA, GMSK, TN 0-1-2-3), EDGE BOTTOM

Room Ambient Temperature: 23.0°C, Liquid Temperature: 22.0°C

Exposure Conditions

Band	PCS 1900	TSL Permittivity	39.6
Frequency [MHz] / Channel Number	1880.0 / 661	TSL Conductivity [S/m]	1.39
Group / UID	GSM / 10028-DAC	Phantom Section / TSL	Flat / HSL
Conversion Factor	7.61	Test Distance [mm]	10.00

DASY Configuration

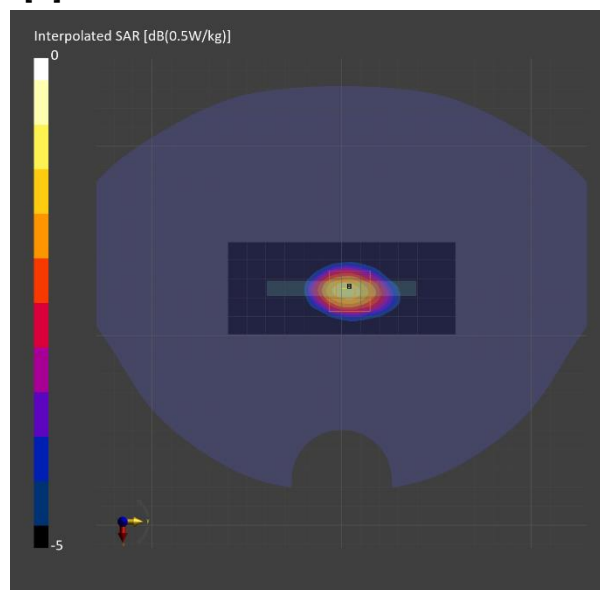
Probe Calibration Date	EX3DV4 - SN7646 2024-03-15	Phantom	Twin-SAM V8.0 (30deg probe tilt)
DAE Calibration Date	DAE4 Sn1670 2024-05-15	TSL Type	HBBL-600-10000
Software Version	16.2.2.1588		

Scan Setup

	Area Scan	Zoom Scan
Grid Extents [mm]	48.6 x 120.0	32.0 x 32.0 x 30.0
Grid Steps [mm]	8.1 x 15.0	6.0 x 6.0 x 1.5
Sensor Surface [mm]	3.0	1.4

Measurement Results

	Area Scan	Zoom Scan
psSAR1g [W/Kg]	0.331	0.337
psSAR10g [W/Kg]	0.185	0.191
Power Drift [dB]		0.02
Dist 3dB Peak [mm]		13.0
M2/M1 [%]		83.5



Band 5: UMTS-FDD (WCDMA), CHEEK

Room Ambient Temperature: 23.0°C, Liquid Temperature: 22.0°C

Exposure Conditions

Band	Band 5	TSL Permittivity	40.3
Frequency [MHz] / Channel Number	836.6 / 4183	TSL Conductivity [S/m]	0.935
Group / UID	WCDMA / 10011-CAC	Phantom Section / TSL	RightHead / HSL
Conversion Factor	8.38	Test Distance [mm]	0.00

DASY Configuration

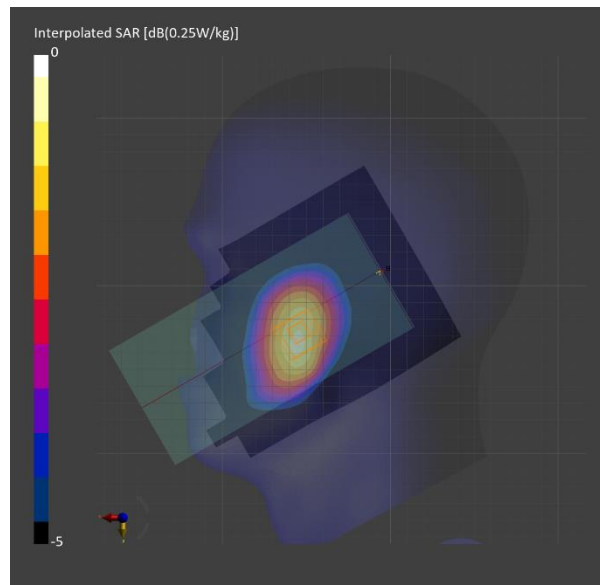
Probe Calibration Date	EX3DV4 - SN7645 2023-09-20	Phantom	Twin-SAM V8.0 (30deg probe tilt)
DAE Calibration Date	DAE4 Sn1671 2024-04-18	TSL Type	HBBL-600-10000
Software Version	16.2.2.1588		

Scan Setup

	Area Scan	Zoom Scan
Grid Extents [mm]	120.0 x 210.0	30.0 x 30.0 x 30.0
Grid Steps [mm]	15.0 x 15.0	6.0 x 6.0 x 1.5
Sensor Surface [mm]	3.0	1.4

Measurement Results

	Area Scan	Zoom Scan
psSAR1g [W/Kg]	0.185	0.198
psSAR10g [W/Kg]	0.126	0.152
Power Drift [dB]		-0.06
Dist 3dB Peak [mm]		22.9
M2/M1 [%]		95.6



Band 5: UMTS-FDD (WCDMA), BACK

Room Ambient Temperature: 23.0°C, Liquid Temperature: 22.0°C

Exposure Conditions

Band	Band 5	TSL Permittivity	40.3
Frequency [MHz] / Channel Number	836.6 / 4183	TSL Conductivity [S/m]	0.935
Group / UID	WCDMA / 10011-CAC	Phantom Section / TSL	Flat / HSL
Conversion Factor	8.38	Test Distance [mm]	10.00

DASY Configuration

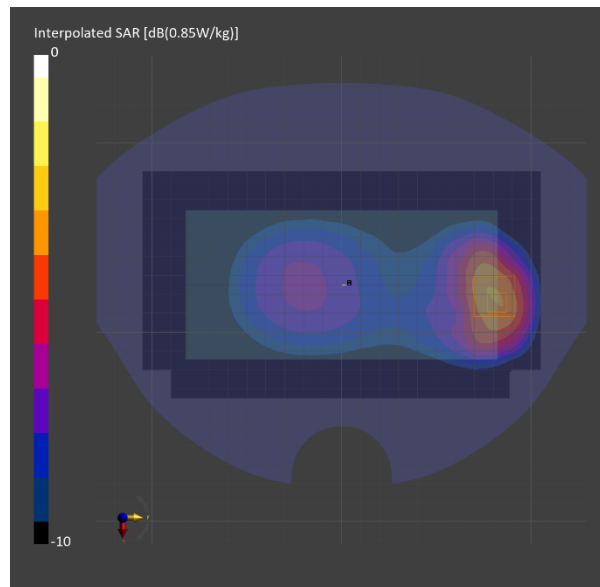
Probe Calibration Date	EX3DV4 - SN7645 2023-09-20	Phantom	Twin-SAM V8.0 (30deg probe tilt)
DAE Calibration Date	DAE4 Sn1671 2024-04-18	TSL Type	HBBL-600-10000
Software Version	16.2.2.1588		

Scan Setup

	Area Scan	Zoom Scan
Grid Extents [mm]	120.0 x 210.0	30.0 x 30.0 x 30.0
Grid Steps [mm]	15.0 x 15.0	6.0 x 6.0 x 1.5
Sensor Surface [mm]	3.0	1.4

Measurement Results

	Area Scan	Zoom Scan
psSAR1g [W/Kg]	0.350	0.380
psSAR10g [W/Kg]	0.235	0.225
Power Drift [dB]		0.04
Dist 3dB Peak [mm]		12.3
M2/M1 [%]		80.4



Band 4: UMTS-FDD (WCDMA), CHEEK

Room Ambient Temperature: 23.0°C, Liquid Temperature: 22.0°C

Exposure Conditions

Band	Band 4	TSL Permittivity	40.1
Frequency [MHz] / Channel Number	1752.6 / 1513	TSL Conductivity [S/m]	1.34
Group / UID	WCDMA / 10011-CAC	Phantom Section / TSL	LeftHead / HSL
Conversion Factor	7.9	Test Distance [mm]	0.00

DASY Configuration

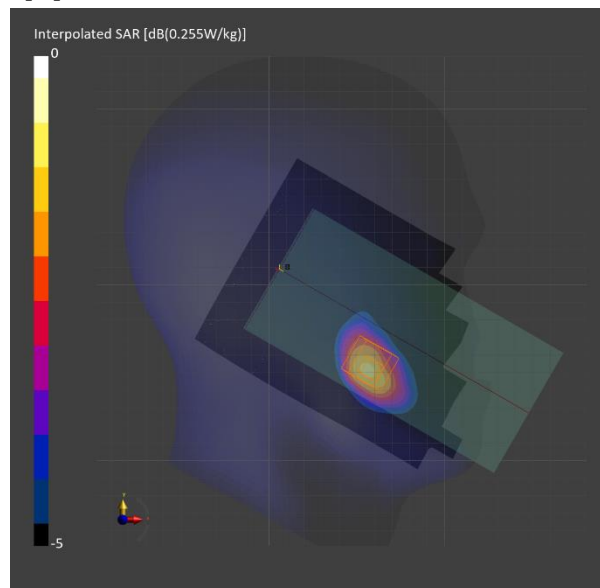
Probe Calibration Date	EX3DV4 - SN7313 2024-02-21	Phantom	Twin-SAM V8.0 (30deg probe tilt)
DAE Calibration Date	DAE4 Sn1447 2024-03-13	TSL Type	HBBL-600-10000
Software Version	16.2.2.1588		

Scan Setup

	Area Scan	Zoom Scan
Grid Extents [mm]	120.0 x 210.0	30.0 x 30.0 x 30.0
Grid Steps [mm]	15.0 x 15.0	6.0 x 6.0 x 1.5
Sensor Surface [mm]	3.0	1.4

Measurement Results

	Area Scan	Zoom Scan
psSAR1g [W/Kg]	0.163	0.168
psSAR10g [W/Kg]	0.097	0.108
Power Drift [dB]		0.04
Dist 3dB Peak [mm]		13.3
M2/M1 [%]		87.8



Band 4: UMTS-FDD (WCDMA), EDGE BOTTOM

Room Ambient Temperature: 23.0°C, Liquid Temperature: 22.0°C

Exposure Conditions

Band	Band 4	TSL Permittivity	39.9
Frequency [MHz] / Channel Number	1752.6 / 1513	TSL Conductivity [S/m]	1.33
Group / UID	WCDMA / 10011-CAC	Phantom Section / TSL	Flat / HSL
Conversion Factor	7.94	Test Distance [mm]	10.00

DASY Configuration

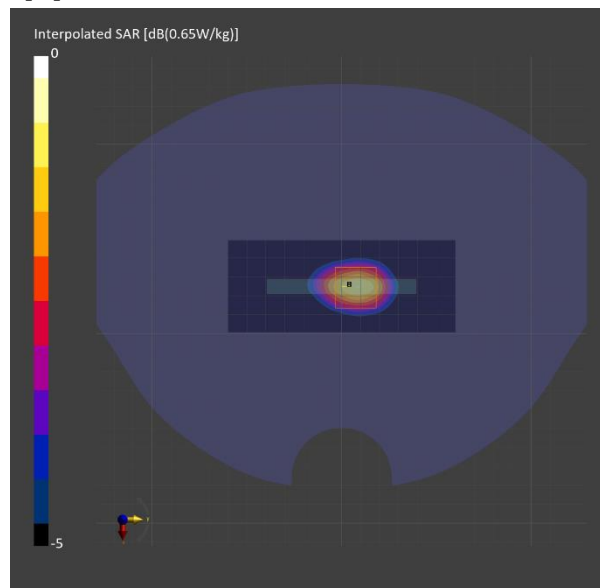
Probe Calibration Date	EX3DV4 - SN7646 2024-03-15	Phantom	Twin-SAM V8.0 (30deg probe tilt)
DAE Calibration Date	DAE4 Sn1670 2024-05-15	TSL Type	HBBL-600-10000
Software Version	16.2.2.1588		

Scan Setup

	Area Scan	Zoom Scan
Grid Extents [mm]	48.6 x 120.0	32.0 x 32.0 x 30.0
Grid Steps [mm]	8.1 x 15.0	6.0 x 6.0 x 1.5
Sensor Surface [mm]	3.0	1.4

Measurement Results

	Area Scan	Zoom Scan
psSAR1g [W/Kg]	0.439	0.455
psSAR10g [W/Kg]	0.248	0.258
Power Drift [dB]		0.04
Dist 3dB Peak [mm]		13.2
M2/M1 [%]		82.4



Band 2: UMTS-FDD (WCDMA), TILT

Room Ambient Temperature: 23.0°C, Liquid Temperature: 22.0°C

Exposure Conditions

Band	Band 2	TSL Permittivity	39.9
Frequency [MHz] / Channel Number	1880.0 / 9400	TSL Conductivity [S/m]	1.40
Group / UID	WCDMA / 10011-CAC	Phantom Section / TSL	LeftHead / HSL
Conversion Factor	7.43	Test Distance [mm]	0.00

DASY Configuration

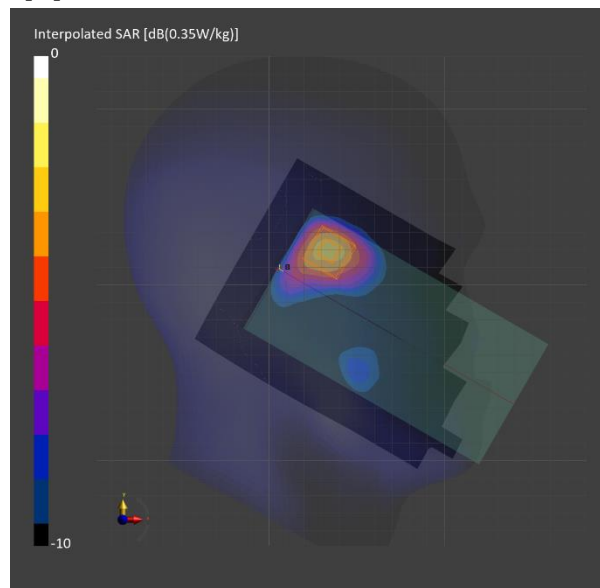
Probe Calibration Date	EX3DV4 - SN7313 2024-02-21	Phantom	Twin-SAM V8.0 (30deg probe tilt)
DAE Calibration Date	DAE4 Sn1447 2024-03-13	TSL Type	HBBL-600-10000
Software Version	16.2.2.1588		

Scan Setup

	Area Scan	Zoom Scan
Grid Extents [mm]	120.0 x 210.0	30.0 x 30.0 x 30.0
Grid Steps [mm]	15.0 x 15.0	6.0 x 6.0 x 1.5
Sensor Surface [mm]	3.0	1.4

Measurement Results

	Area Scan	Zoom Scan
psSAR1g [W/Kg]	0.148	0.161
psSAR10g [W/Kg]	0.085	0.095
Power Drift [dB]		-0.01
Dist 3dB Peak [mm]		13.1
M2/M1 [%]		87.0



Band 2: UMTS-FDD (WCDMA), BACK

Room Ambient Temperature: 23.0°C, Liquid Temperature: 22.0°C

Exposure Conditions

Band	Band 2	TSL Permittivity	39.6
Frequency [MHz] / Channel Number	1880.0 / 9400	TSL Conductivity [S/m]	1.39
Group / UID	WCDMA / 10011-CAC	Phantom Section / TSL	Flat / HSL
Conversion Factor	7.61	Test Distance [mm]	10.00

DASY Configuration

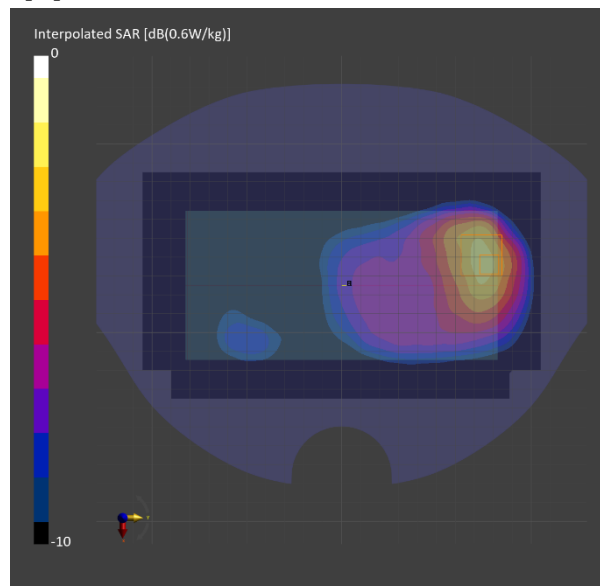
Probe Calibration Date	EX3DV4 - SN7646 2024-03-15	Phantom	Twin-SAM V8.0 (30deg probe tilt)
DAE Calibration Date	DAE4 Sn1670 2024-05-15	TSL Type	HBBL-600-10000
Software Version	16.2.2.1588		

Scan Setup

	Area Scan	Zoom Scan
Grid Extents [mm]	120.0 x 210.0	32.0 x 32.0 x 30.0
Grid Steps [mm]	15.0 x 15.0	6.0 x 6.0 x 1.5
Sensor Surface [mm]	3.0	1.4

Measurement Results

	Area Scan	Zoom Scan
psSAR1g [W/Kg]	0.305	0.313
psSAR10g [W/Kg]	0.182	0.186
Power Drift [dB]		-0.02
Dist 3dB Peak [mm]		11.9
M2/M1 [%]		82.2



Band 12: LTE-FDD (SC-FDMA, 1 RB, 10 MHz, QPSK) CHEEK

Room Ambient Temperature: 23.0°C, Liquid Temperature: 22.0°C

Exposure Conditions

Band	Band 12	TSL Permittivity	42.0
Frequency [MHz] / Channel Number	707.5 / 23095	TSL Conductivity [S/m]	0.879
Group / UID	LTE-FDD / 10175-CAH	Phantom Section / TSL	RightHead / HSL
Conversion Factor	7.92	Test Distance [mm]	0.00

DASY Configuration

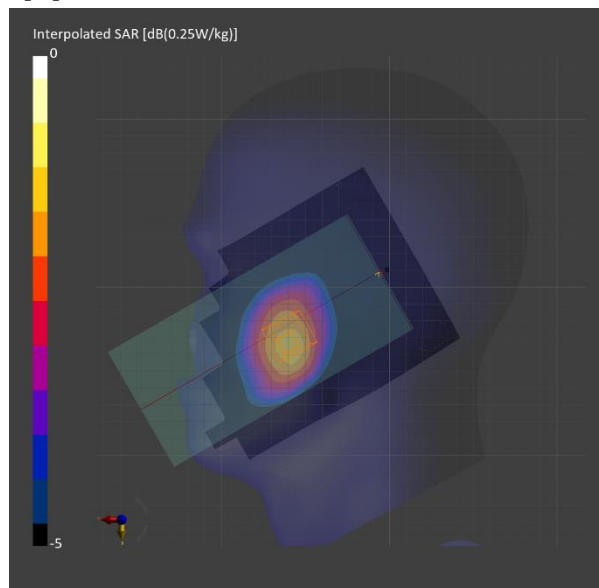
Probe Calibration Date	EX3DV4 - SN7645 2023-09-20	Phantom	Twin-SAM V8.0 (30deg probe tilt)
DAE Calibration Date	DAE4 Sn1671 2024-04-18	TSL Type	HBBL-600-10000
Software Version	16.2.2.1588		

Scan Setup

	Area Scan	Zoom Scan
Grid Extents [mm]	120.0 x 210.0	30.0 x 30.0 x 30.0
Grid Steps [mm]	15.0 x 15.0	6.0 x 6.0 x 1.5
Sensor Surface [mm]	3.0	1.4

Measurement Results

	Area Scan	Zoom Scan
psSAR1g [W/Kg]	0.161	0.162
psSAR10g [W/Kg]	0.112	0.127
Power Drift [dB]		0.08
Dist 3dB Peak [mm]		> 15.0
M2/M1 [%]		95.8



Band 12: LTE-FDD (SC-FDMA, 1 RB, 10 MHz, QPSK) BACK

Room Ambient Temperature: 23.0°C, Liquid Temperature: 22.0°C

Exposure Conditions

Band	Band 12	TSL Permittivity	42.2
Frequency [MHz] / Channel Number	707.5 / 23095	TSL Conductivity [S/m]	0.877
Group / UID	LTE-FDD / 10175-CAH	Phantom Section / TSL	Flat / HSL
Conversion Factor	7.92	Test Distance [mm]	10.00

DASY Configuration

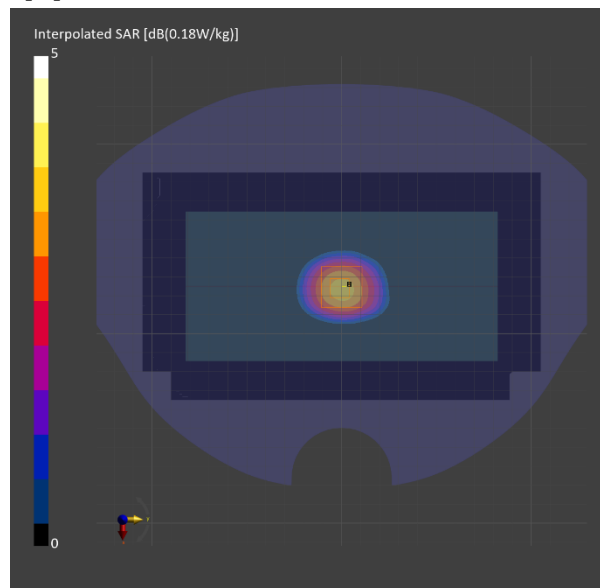
Probe Calibration Date	EX3DV4 - SN7645 2023-09-20	Phantom	Twin-SAM V8.0 (30deg probe tilt)
DAE Calibration Date	DAE4 Sn1671 2024-04-18	TSL Type	HBBL-600-10000
Software Version	16.2.2.1588		

Scan Setup

	Area Scan	Zoom Scan
Grid Extents [mm]	120.0 x 210.0	30.0 x 30.0 x 30.0
Grid Steps [mm]	15.0 x 15.0	6.0 x 6.0 x 1.5
Sensor Surface [mm]	3.0	1.4

Measurement Results

	Area Scan	Zoom Scan
psSAR1g [W/Kg]	0.237	0.250
psSAR10g [W/Kg]	0.170	0.192
Power Drift [dB]		0.03
Dist 3dB Peak [mm]		> 15.0
M2/M1 [%]		91.9



Band 13: LTE-FDD (SC-FDMA, 1 RB, 10 MHz, QPSK) CHEEK

Room Ambient Temperature: 23.0°C, Liquid Temperature: 22.0°C

Exposure Conditions

Band	Band 13	TSL Permittivity	41.8
Frequency [MHz] / Channel Number	782.0 / 23230	TSL Conductivity [S/m]	0.903
Group / UID	LTE-FDD / 10175-CAH	Phantom Section / TSL	RightHead / HSL
Conversion Factor	7.92	Test Distance [mm]	0.00

DASY Configuration

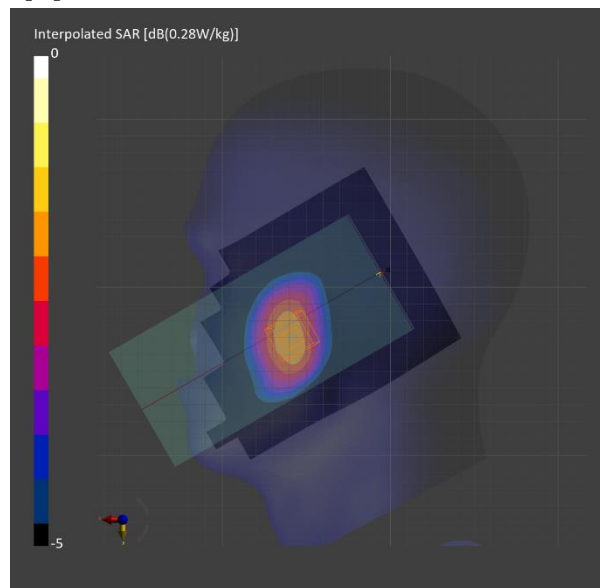
Probe Calibration Date	EX3DV4 - SN7645 2023-09-20	Phantom	Twin-SAM V8.0 (30deg probe tilt)
DAE Calibration Date	DAE4 Sn1671 2024-04-18	TSL Type	HBBL-600-10000
Software Version	16.2.2.1588		

Scan Setup

	Area Scan	Zoom Scan
Grid Extents [mm]	120.0 x 210.0	30.0 x 30.0 x 30.0
Grid Steps [mm]	15.0 x 15.0	6.0 x 6.0 x 1.5
Sensor Surface [mm]	3.0	1.4

Measurement Results

	Area Scan	Zoom Scan
psSAR1g [W/Kg]	0.167	0.178
psSAR10g [W/Kg]	0.116	0.139
Power Drift [dB]		0.12
Dist 3dB Peak [mm]		26.6
M2/M1 [%]		97.7



Band 13: LTE-FDD (SC-FDMA, 1 RB, 10 MHz, QPSK) EDGE RIGHT

Room Ambient Temperature: 23.0°C, Liquid Temperature: 22.0°C

Exposure Conditions

Band	Band 13	TSL Permittivity	41.8
Frequency [MHz] / Channel Number	782.0 / 23230	TSL Conductivity [S/m]	0.903
Group / UID	LTE-FDD / 10175-CAH	Phantom Section / TSL	Flat / HSL
Conversion Factor	7.92	Test Distance [mm]	10.00

DASY Configuration

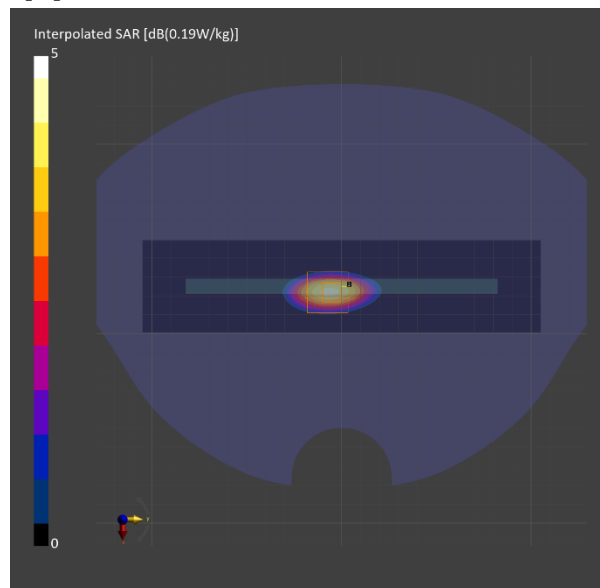
Probe Calibration Date	EX3DV4 - SN7645 2023-09-20	Phantom	Twin-SAM V8.0 (30deg probe tilt)
DAE Calibration Date	DAE4 Sn1671 2024-04-18	TSL Type	HBBL-600-10000
Software Version	16.2.2.1588		

Scan Setup

	Area Scan	Zoom Scan
Grid Extents [mm]	48.6 x 210.0	30.0 x 30.0 x 30.0
Grid Steps [mm]	8.1 x 15.0	6.0 x 6.0 x 1.5
Sensor Surface [mm]	3.0	1.4

Measurement Results

	Area Scan	Zoom Scan
psSAR1g [W/Kg]	0.256	0.264
psSAR10g [W/Kg]	0.176	0.186
Power Drift [dB]		-0.01
Dist 3dB Peak [mm]		> 15.0
M2/M1 [%]		88.7



Band 26: LTE-FDD (SC-FDMA, 1 RB, 15 MHz, QPSK) CHEEK

Room Ambient Temperature: 23.0°C, Liquid Temperature: 22.0°C

Exposure Conditions

Band	Band 26	TSL Permittivity	41.8
Frequency [MHz] / Channel Number	831.5 / 26865	TSL Conductivity [S/m]	0.919
Group / UID	LTE-FDD / 10181-CAF	Phantom Section / TSL	RightHead / HSL
Conversion Factor	8.38	Test Distance [mm]	0.00

DASY Configuration

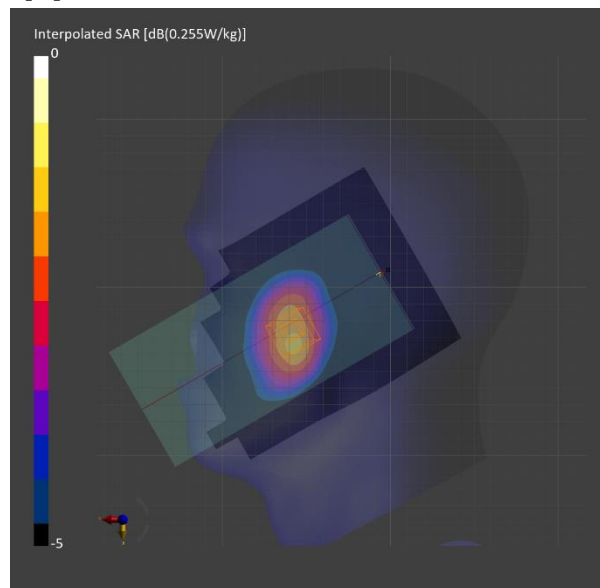
Probe Calibration Date	EX3DV4 - SN7645 2023-09-20	Phantom	Twin-SAM V8.0 (30deg probe tilt)
DAE Calibration Date	DAE4 Sn1671 2024-04-18	TSL Type	HBBL-600-10000
Software Version	16.2.2.1588		

Scan Setup

	Area Scan	Zoom Scan
Grid Extents [mm]	120.0 x 210.0	30.0 x 30.0 x 30.0
Grid Steps [mm]	15.0 x 15.0	6.0 x 6.0 x 1.5
Sensor Surface [mm]	3.0	1.4

Measurement Results

	Area Scan	Zoom Scan
psSAR1g [W/Kg]	0.157	0.167
psSAR10g [W/Kg]	0.107	0.129
Power Drift [dB]		-0.04
Dist 3dB Peak [mm]		22.7
M2/M1 [%]		95.8



Band 26: LTE-FDD (SC-FDMA, 1 RB, 15 MHz, QPSK) BACK

Room Ambient Temperature: 23.0°C, Liquid Temperature: 22.0°C

Exposure Conditions

Band	Band 26	TSL Permittivity	42.5
Frequency [MHz] / Channel Number	831.5 / 26865	TSL Conductivity [S/m]	0.918
Group / UID	LTE-FDD / 10181-CAF	Phantom Section / TSL	Flat / HSL
Conversion Factor	8.38	Test Distance [mm]	10.00

DASY Configuration

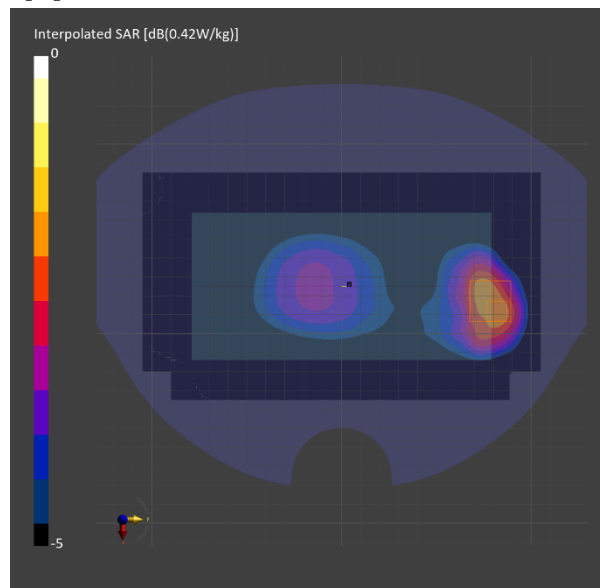
Probe Calibration Date	EX3DV4 - SN7645 2023-09-20	Phantom	Twin-SAM V8.0 (30deg probe tilt)
DAE Calibration Date	DAE4 Sn1671 2024-04-18	TSL Type	HBBL-600-10000
Software Version	16.2.2.1588		

Scan Setup

	Area Scan	Zoom Scan
Grid Extents [mm]	120.0 x 210.0	30.0 x 30.0 x 30.0
Grid Steps [mm]	15.0 x 15.0	6.0 x 6.0 x 1.5
Sensor Surface [mm]	3.0	1.4

Measurement Results

	Area Scan	Zoom Scan
psSAR1g [W/Kg]	0.247	0.262
psSAR10g [W/Kg]	0.168	0.159
Power Drift [dB]		0.00
Dist 3dB Peak [mm]		12.0
M2/M1 [%]		80.7



Band 5: LTE-FDD (SC-FDMA, 1 RB, 10 MHz, QPSK) CHEEK

Room Ambient Temperature: 23.0°C, Liquid Temperature: 22.0°C

Exposure Conditions

Band	Band 5	TSL Permittivity	41.8
Frequency [MHz] / Channel Number	836.5 / 20525	TSL Conductivity [S/m]	0.920
Group / UID	LTE-FDD / 10175-CAH	Phantom Section / TSL	RightHead / HSL
Conversion Factor	8.38	Test Distance [mm]	0.00

DASY Configuration

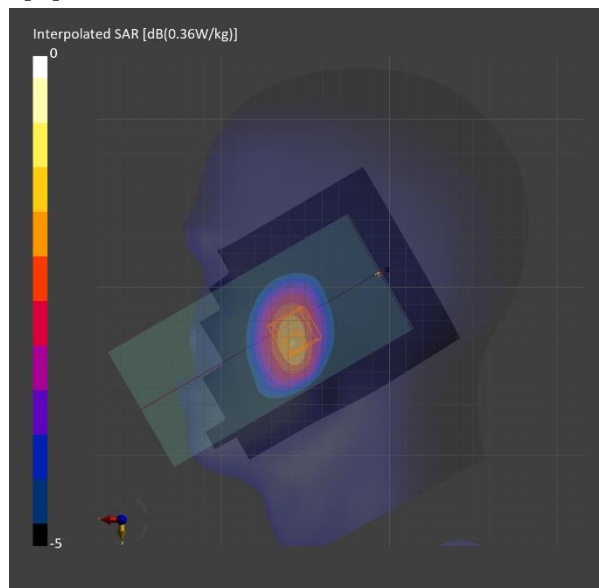
Probe Calibration Date	EX3DV4 - SN7645 2023-09-20	Phantom	Twin-SAM V8.0 (30deg probe tilt)
DAE Calibration Date	DAE4 Sn1671 2024-04-18	TSL Type	HBBL-600-10000
Software Version	16.2.2.1588		

Scan Setup

	Area Scan	Zoom Scan
Grid Extents [mm]	120.0 x 210.0	30.0 x 30.0 x 30.0
Grid Steps [mm]	15.0 x 15.0	6.0 x 6.0 x 1.5
Sensor Surface [mm]	3.0	1.4

Measurement Results

	Area Scan	Zoom Scan
psSAR1g [W/Kg]	0.215	0.221
psSAR10g [W/Kg]	0.147	0.170
Power Drift [dB]		0.02
Dist 3dB Peak [mm]		20.2
M2/M1 [%]		96.3



Band 66: LTE-FDD (SC-FDMA, 50% RB, 20 MHz, QPSK) CHEEK

Room Ambient Temperature: 23.0°C, Liquid Temperature: 22.0°C

Exposure Conditions

Band	Band 66	TSL Permittivity	41.4
Frequency [MHz] / Channel Number	1745.000 / 132322	TSL Conductivity [S/m]	1.32
Group / UID	LTE-FDD / 10297-AAE	Phantom Section / TSL	LeftHead / Head Simulating Liquid
Conversion Factor	8.25	Test Distance [mm]	0.00

DASY Configuration

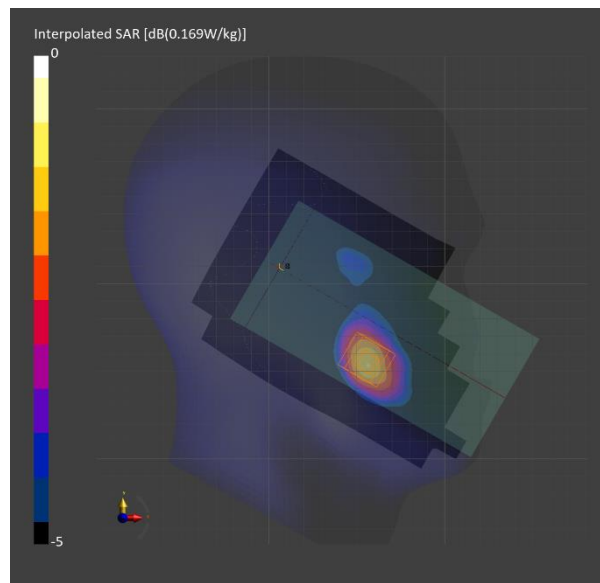
Probe Calibration Date	EX3DV4 - SN7314 2024-05-23	Phantom	Twin-SAM V8.0 (30deg probe tilt)
DAE Calibration Date	DAE4 Sn1668 2024-04-18	TSL Type	HBBL-600-10000
Software Version	16.4.0.5005		

Scan Setup

	Area Scan	Zoom Scan
Grid Extents [mm]	120.0 x 210.0	30.0 x 30.0 x 30.0
Grid Steps [mm]	15.0 x 15.0	6.0 x 6.0 x 1.5
Sensor Surface [mm]	3.0	1.4

Measurement Results

	Area Scan	Zoom Scan
psSAR1g [W/Kg]	0.106	0.116
psSAR10g [W/Kg]	0.063	0.075
Power Drift [dB]		-0.02
Dist 3dB Peak [mm]		13.9
M2/M1 [%]		89.8



Band 66: LTE-FDD (SC-FDMA, 50% RB, 20 MHz, QPSK) EDGE BOTTOM

Room Ambient Temperature: 23.0°C, Liquid Temperature: 22.0°C

Exposure Conditions

Band	Band 66	TSL Permittivity	40.7
Frequency [MHz] / Channel Number	1745.0 / 132322	TSL Conductivity [S/m]	1.31
Group / UID	LTE-FDD / 10297-AAE	Phantom Section / TSL	Flat / HSL
Conversion Factor	7.94	Test Distance [mm]	10.00

DASY Configuration

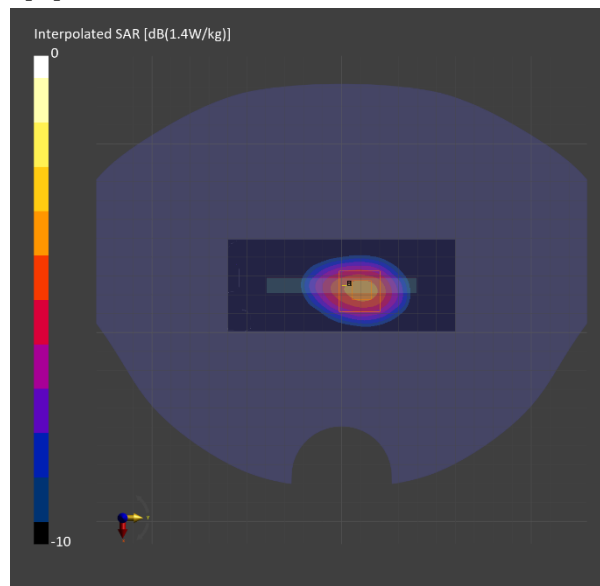
Probe Calibration Date	EX3DV4 - SN7646 2024-03-15	Phantom	Twin-SAM V8.0 (30deg probe tilt)
DAE Calibration Date	DAE4 Sn1670 2024-05-15	TSL Type	HBBL-600-10000
Software Version	16.2.2.1588		

Scan Setup

	Area Scan	Zoom Scan
Grid Extents [mm]	48.6 x 120.0	32.0 x 32.0 x 30.0
Grid Steps [mm]	8.1 x 15.0	6.0 x 6.0 x 1.5
Sensor Surface [mm]	3.0	1.4

Measurement Results

	Area Scan	Zoom Scan
psSAR1g [W/Kg]	0.496	0.513
psSAR10g [W/Kg]	0.279	0.292
Power Drift [dB]		0.01
Dist 3dB Peak [mm]		12.0
M2/M1 [%]		82.4



Band 66: LTE-FDD (SC-FDMA, 1 RB, 20 MHz, QPSK) CHEEK

Room Ambient Temperature: 23.0°C, Liquid Temperature: 22.0°C

Exposure Conditions

Band	Band 66	TSL Permittivity	40.2
Frequency [MHz] / Channel Number	1745.0 / 132322	TSL Conductivity [S/m]	1.32
Group / UID	LTE-FDD / 10169-CAF	Phantom Section / TSL	RightHead / HSL
Conversion Factor	7.94	Test Distance [mm]	0.00

DASY Configuration

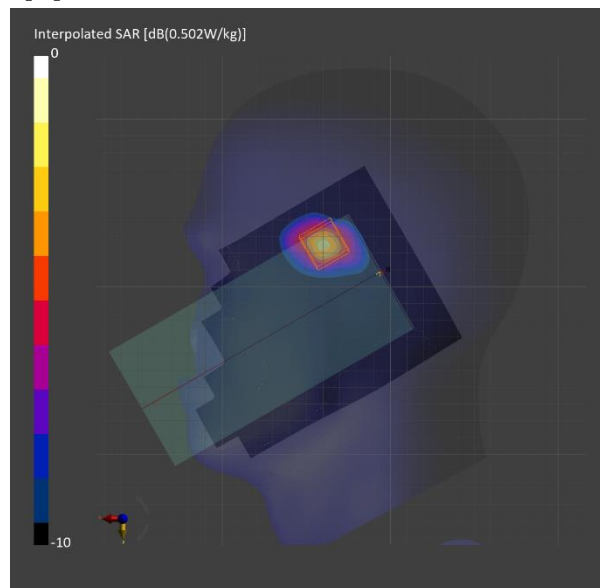
Probe Calibration Date	EX3DV4 - SN7646 2024-03-15	Phantom	Twin-SAM V8.0 (30deg probe tilt)
DAE Calibration Date	DAE4 Sn1670 2024-05-15	TSL Type	HBBL-600-10000
Software Version	16.2.2.1588		

Scan Setup

	Area Scan	Zoom Scan
Grid Extents [mm]	120.0 x 210.0	32.0 x 32.0 x 30.0
Grid Steps [mm]	15.0 x 15.0	6.0 x 6.0 x 1.5
Sensor Surface [mm]	3.0	1.4

Measurement Results

	Area Scan	Zoom Scan
psSAR1g [W/Kg]	0.228	0.242
psSAR10g [W/Kg]	0.115	0.116
Power Drift [dB]		-0.02
Dist 3dB Peak [mm]		9.3
M2/M1 [%]		80.2



Band 66: LTE-FDD (SC-FDMA, 1 RB, 20 MHz, QPSK) BACK

Room Ambient Temperature: 23.0°C, Liquid Temperature: 22.0°C

Exposure Conditions

Band	Band 66	TSL Permittivity	40.2
Frequency [MHz] / Channel Number	1745.0 / 132322	TSL Conductivity [S/m]	1.32
Group / UID	LTE-FDD / 10169-CAF	Phantom Section / TSL	Flat / HSL
Conversion Factor	7.94	Test Distance [mm]	10.00

DASY Configuration

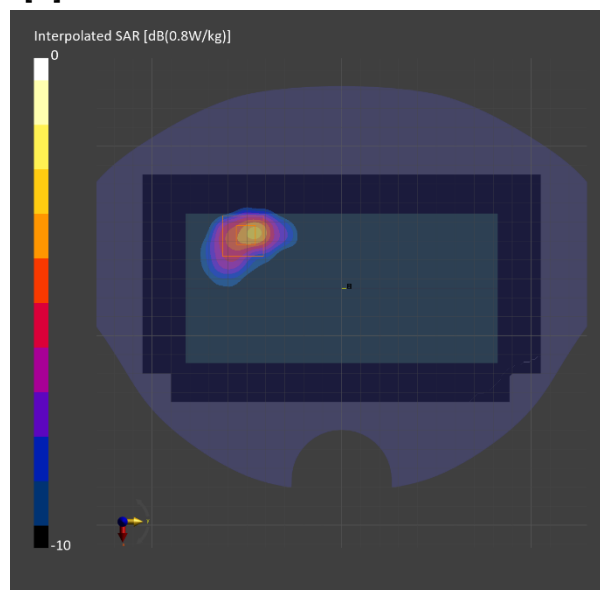
Probe Calibration Date	EX3DV4 - SN7646 2024-03-15	Phantom	Twin-SAM V8.0 (30deg probe tilt)
DAE Calibration Date	DAE4 Sn1670 2024-05-15	TSL Type	HBBL-600-10000
Software Version	16.2.2.1588		

Scan Setup

	Area Scan	Zoom Scan
Grid Extents [mm]	120.0 x 210.0	32.0 x 32.0 x 30.0
Grid Steps [mm]	15.0 x 15.0	6.0 x 6.0 x 1.5
Sensor Surface [mm]	3.0	1.4

Measurement Results

	Area Scan	Zoom Scan
psSAR1g [W/Kg]	0.308	0.330
psSAR10g [W/Kg]	0.156	0.160
Power Drift [dB]		-0.01
Dist 3dB Peak [mm]		8.5
M2/M1 [%]		78.1



Band 4: LTE-FDD (SC-FDMA, 1 RB, 20 MHz, QPSK) CHEEK

Room Ambient Temperature: 23.0°C, Liquid Temperature: 22.0°C

Exposure Conditions

Band	Band 4	TSL Permittivity	40.7
Frequency [MHz] / Channel Number	1732.5 / 20175	TSL Conductivity [S/m]	1.31
Group / UID	LTE-FDD / 10169-CAF	Phantom Section / TSL	LeftHead / HSL
Conversion Factor	7.94	Test Distance [mm]	0.00

DASY Configuration

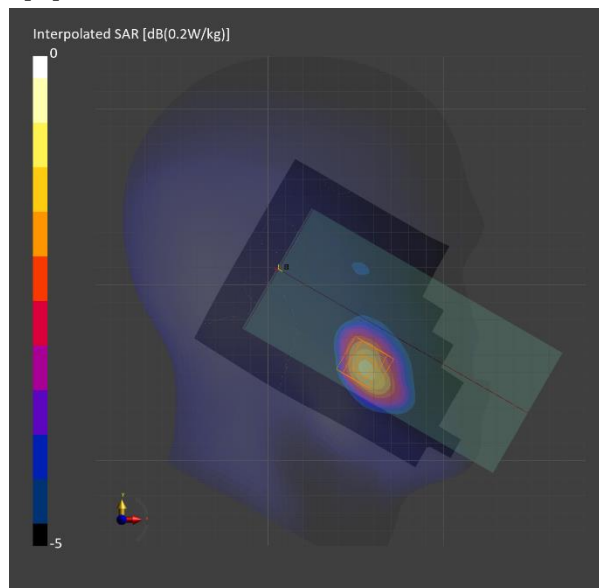
Probe Calibration Date	EX3DV4 - SN7646 2024-03-15	Phantom	Twin-SAM V8.0 (30deg probe tilt)
DAE Calibration Date	DAE4 Sn1670 2024-05-15	TSL Type	HBBL-600-10000
Software Version	16.2.2.1588		

Scan Setup

	Area Scan	Zoom Scan
Grid Extents [mm]	120.0 x 210.0	32.0 x 32.0 x 30.0
Grid Steps [mm]	15.0 x 15.0	6.0 x 6.0 x 1.5
Sensor Surface [mm]	3.0	1.4

Measurement Results

	Area Scan	Zoom Scan
psSAR1g [W/Kg]	0.129	0.137
psSAR10g [W/Kg]	0.078	0.091
Power Drift [dB]		-0.13
Dist 3dB Peak [mm]		12.6
M2/M1 [%]		94.2



Band 2: LTE-FDD (SC-FDMA, 1 RB, 20 MHz, QPSK) TILT

Room Ambient Temperature: 23.0°C, Liquid Temperature: 22.0°C

Exposure Conditions

Band	Band 2	TSL Permittivity	41.3
Frequency [MHz] / Channel Number	1880.000 / 18900	TSL Conductivity [S/m]	1.38
Group / UID	LTE-FDD / 10169-CAF	Phantom Section / TSL	LeftHead / Head Simulating Liquid
Conversion Factor	7.96	Test Distance [mm]	0.00

DASY Configuration

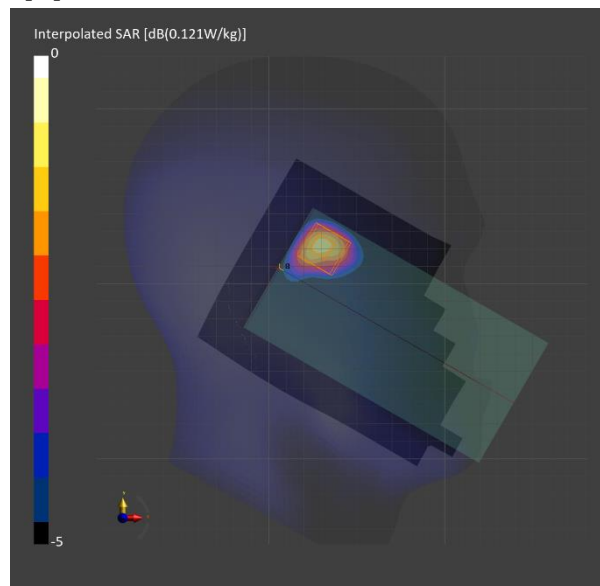
Probe Calibration Date	EX3DV4 - SN7314 2024-05-23	Phantom	Twin-SAM V8.0 (30deg probe tilt)
DAE Calibration Date	DAE4 Sn1668 2024-04-18	TSL Type	HBBL-600-10000
Software Version	16.4.0.5005		

Scan Setup

	Area Scan	Zoom Scan
Grid Extents [mm]	120.0 x 210.0	30.0 x 30.0 x 30.0
Grid Steps [mm]	15.0 x 15.0	6.0 x 6.0 x 1.5
Sensor Surface [mm]	3.0	1.4

Measurement Results

	Area Scan	Zoom Scan
psSAR1g [W/Kg]	0.077	0.084
psSAR10g [W/Kg]	0.044	0.051
Power Drift [dB]		0.03
Dist 3dB Peak [mm]		14.4
M2/M1 [%]		89.6



Band 2: LTE-FDD (SC-FDMA, 50% RB, 20 MHz, QPSK) BACK

Room Ambient Temperature: 23.0°C, Liquid Temperature: 22.0°C

Exposure Conditions

Band	Band 2	TSL Permittivity	39.3
Frequency [MHz] / Channel Number	1880.0 / 18900	TSL Conductivity [S/m]	1.37
Group / UID	LTE-FDD / 10297-AAE	Phantom Section / TSL	Flat / HSL
Conversion Factor	7.61	Test Distance [mm]	10.00

DASY Configuration

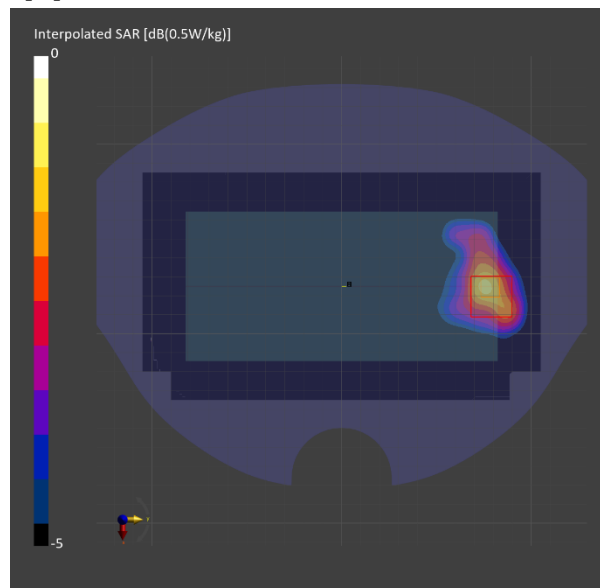
Probe Calibration Date	EX3DV4 - SN7646 2024-03-15	Phantom	Twin-SAM V8.0 (30deg probe tilt)
DAE Calibration Date	DAE4 Sn1670 2024-05-15	TSL Type	HBBL-600-10000
Software Version	16.2.2.1588		

Scan Setup

	Area Scan	Zoom Scan
Grid Extents [mm]	120.0 x 210.0	32.0 x 32.0 x 30.0
Grid Steps [mm]	15.0 x 15.0	6.0 x 6.0 x 1.5
Sensor Surface [mm]	3.0	1.4

Measurement Results

	Area Scan	Zoom Scan
psSAR1g [W/Kg]	0.315	0.338
psSAR10g [W/Kg]	0.184	0.200
Power Drift [dB]		0.01
Dist 3dB Peak [mm]		11.1
M2/M1 [%]		84.5



Band 2: LTE-FDD (SC-FDMA, 1 RB, 20 MHz, QPSK) CHEEK

Room Ambient Temperature: 23.0°C, Liquid Temperature: 22.0°C

Exposure Conditions

Band	Band 2	TSL Permittivity	40.6
Frequency [MHz] / Channel Number	1860.0 / 18700	TSL Conductivity [S/m]	1.38
Group / UID	LTE-FDD / 10169-CAF	Phantom Section / TSL	RightHead / HSL
Conversion Factor	7.61	Test Distance [mm]	0.00

DASY Configuration

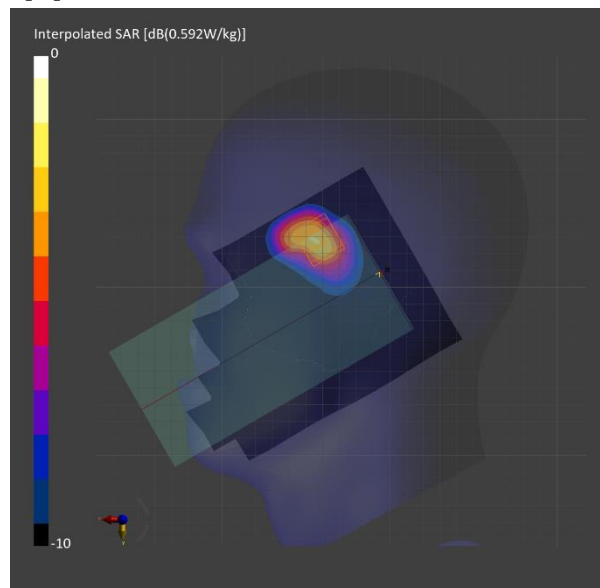
Probe Calibration Date	EX3DV4 - SN7646 2024-03-15	Phantom	Twin-SAM V8.0 (30deg probe tilt)
DAE Calibration Date	DAE4 Sn1670 2024-05-15	TSL Type	HBBL-600-10000
Software Version	16.2.2.1588		

Scan Setup

	Area Scan	Zoom Scan
Grid Extents [mm]	120.0 x 210.0	32.0 x 32.0 x 30.0
Grid Steps [mm]	15.0 x 15.0	6.0 x 6.0 x 1.5
Sensor Surface [mm]	3.0	1.4

Measurement Results

	Area Scan	Zoom Scan
psSAR1g [W/Kg]	0.274	0.324
psSAR10g [W/Kg]	0.153	0.170
Power Drift [dB]		0.06
Dist 3dB Peak [mm]		9.7
M2/M1 [%]		83.9



Band 2: LTE-FDD (SC-FDMA, 50% RB, 20 MHz, QPSK) BACK

Room Ambient Temperature: 23.0°C, Liquid Temperature: 22.0°C

Exposure Conditions

Band	Band 2	TSL Permittivity	40.6
Frequency [MHz] / Channel Number	1860.0 / 18700	TSL Conductivity [S/m]	1.38
Group / UID	LTE-FDD / 10297-AAE	Phantom Section / TSL	Flat / HSL
Conversion Factor	7.61	Test Distance [mm]	10.00

DASY Configuration

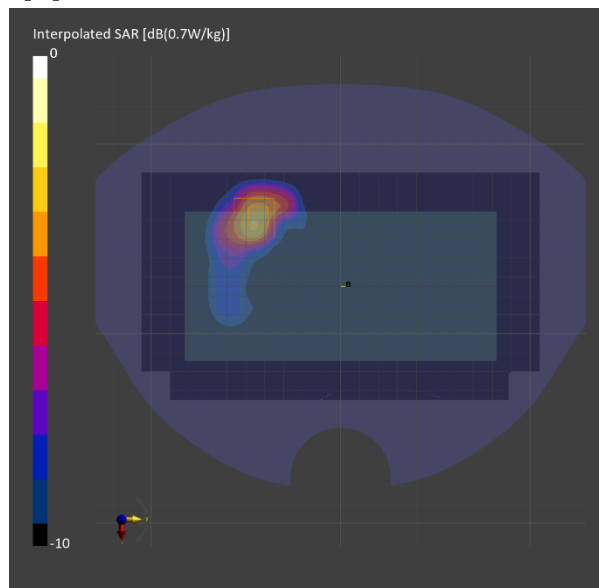
Probe Calibration Date	EX3DV4 - SN7646 2024-03-15	Phantom	Twin-SAM V8.0 (30deg probe tilt)
DAE Calibration Date	DAE4 Sn1670 2024-05-15	TSL Type	HBBL-600-10000
Software Version	16.2.2.1588		

Scan Setup

	Area Scan	Zoom Scan
Grid Extents [mm]	120.0 x 210.0	32.0 x 32.0 x 30.0
Grid Steps [mm]	15.0 x 15.0	6.0 x 6.0 x 1.5
Sensor Surface [mm]	3.0	1.4

Measurement Results

	Area Scan	Zoom Scan
psSAR1g [W/Kg]	0.325	0.387
psSAR10g [W/Kg]	0.174	0.193
Power Drift [dB]		-0.00
Dist 3dB Peak [mm]		8.5
M2/M1 [%]		80.1



Band 41: LTE-TDD (SC-FDMA, 50% RB, 20 MHz, QPSK, UL Subframe=2,3,4,7,8,9) CHEEK

Room Ambient Temperature: 23.0°C, Liquid Temperature: 22.0°C

Exposure Conditions

Band	Band 41	TSL Permittivity	38.5
Frequency [MHz] / Channel Number	2680.000 / 41490	TSL Conductivity [S/m]	1.98
Group / UID	LTE-TDD / 10494-AAG	Phantom Section / TSL	LeftHead / Head Simulating Liquid
Conversion Factor	7.28	Test Distance [mm]	0.00

DASY Configuration

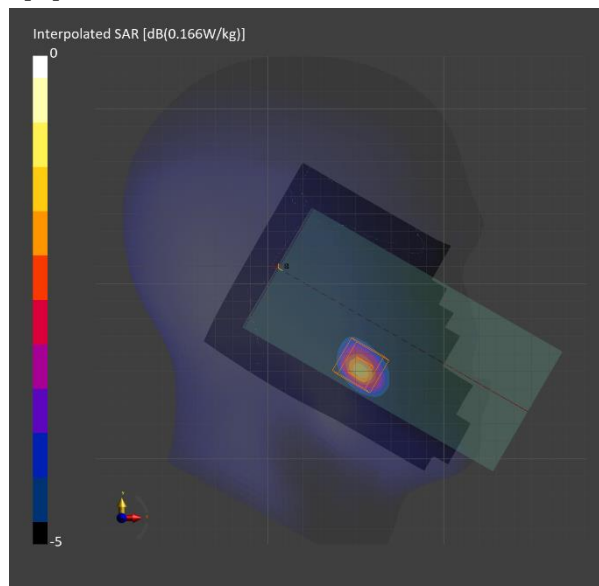
Probe Calibration Date	EX3DV4 - SN7314 2024-05-23	Phantom	Twin-SAM V8.0 (30deg probe tilt)
DAE Calibration Date	DAE4 Sn1668 2024-04-18	TSL Type	HBBL-600-10000
Software Version	16.4.0.5005		

Scan Setup

	Area Scan	Zoom Scan
Grid Extents [mm]	120.0 x 200.0	30.0 x 30.0 x 30.0
Grid Steps [mm]	10.0 x 10.0	5.0 x 5.0 x 1.5
Sensor Surface [mm]	3.0	1.4

Measurement Results

	Area Scan	Zoom Scan
psSAR1g [W/Kg]	0.093	0.098
psSAR10g [W/Kg]	0.046	0.051
Power Drift [dB]		-0.02
Dist 3dB Peak [mm]		10.2
M2/M1 [%]		86.2



Band 41: LTE-TDD (SC-FDMA, 1 RB, 20 MHz, QPSK, UL Subframe=2,3,4,7,8,9) EDGE BOTTOM

Room Ambient Temperature: 23.0°C, Liquid Temperature: 22.0°C

Exposure Conditions

Band	Band 41	TSL Permittivity	40.1
Frequency [MHz] / Channel Number	2680.000 / 41490	TSL Conductivity [S/m]	1.97
Group / UID	LTE-TDD / 10435-AAG	Phantom Section / TSL	Flat / Head Simulating Liquid
Conversion Factor	7.28	Test Distance [mm]	10.00

DASY Configuration

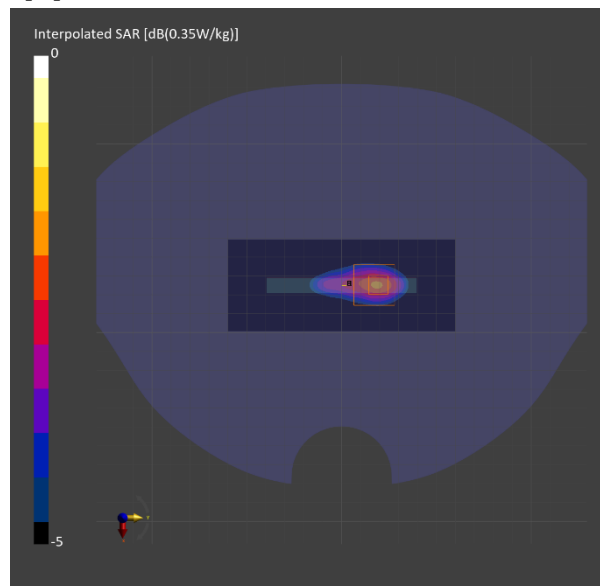
Probe Calibration Date	EX3DV4 - SN7314 2024-05-23	Phantom	Twin-SAM V8.0 (30deg probe tilt)
DAE Calibration Date	DAE4 Sn1668 2024-04-18	TSL Type	HBBL-600-10000
Software Version	16.4.0.5005		

Scan Setup

	Area Scan	Zoom Scan
Grid Extents [mm]	48.6 x 120.0	30.0 x 30.0 x 30.0
Grid Steps [mm]	8.1 x 10.0	5.0 x 5.0 x 1.5
Sensor Surface [mm]	3.0	1.4

Measurement Results

	Area Scan	Zoom Scan
psSAR1g [W/Kg]	0.170	0.174
psSAR10g [W/Kg]	0.085	0.088
Power Drift [dB]		0.03
Dist 3dB Peak [mm]		11.5
M2/M1 [%]		78.9



Band n5: 5G NR (DFT-s-OFDM, 1 RB, 20 MHz, QPSK, 15 kHz) CHEEK

Room Ambient Temperature: 23.0°C, Liquid Temperature: 22.0°C

Exposure Conditions

Band	Band n5	TSL Permittivity	40.7
Frequency [MHz] / Channel Number	836.5 / 167300	TSL Conductivity [S/m]	0.925
Group / UID	5G NR FR1 FDD / 10931-AAC	Phantom Section / TSL	RightHead / HSL
Conversion Factor	8.38	Test Distance [mm]	0.00

DASY Configuration

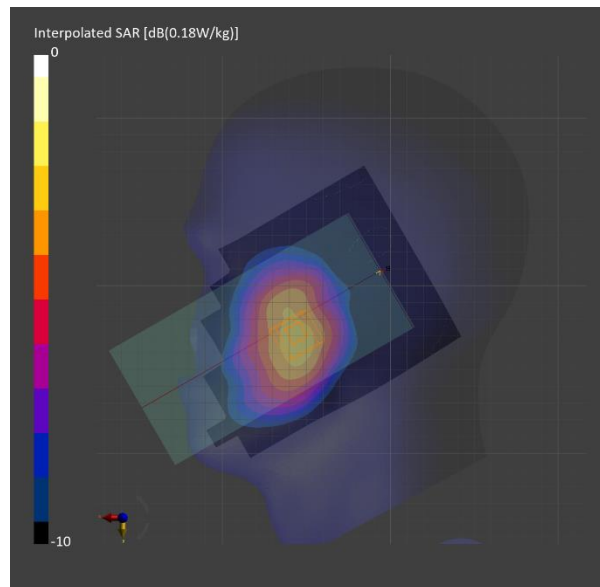
Probe Calibration Date	EX3DV4 - SN7645 2023-09-20	Phantom	Twin-SAM V8.0 (30deg probe tilt)
DAE Calibration Date	DAE4 Sn1671 2024-04-18	TSL Type	HBBL-600-10000
Software Version	16.2.2.1588		

Scan Setup

	Area Scan	Zoom Scan
Grid Extents [mm]	120.0 x 210.0	30.0 x 30.0 x 30.0
Grid Steps [mm]	15.0 x 15.0	6.0 x 6.0 x 1.5
Sensor Surface [mm]	3.0	1.4

Measurement Results

	Area Scan	Zoom Scan
psSAR1g [W/Kg]	0.085	0.088
psSAR10g [W/Kg]	0.057	0.067
Power Drift [dB]		0.15
Dist 3dB Peak [mm]		13.4
M2/M1 [%]		98.6



Band n5: 5G NR (DFT-s-OFDM, 50% RB, 20 MHz, QPSK, 15 kHz) EDGE BOTTOM

Room Ambient Temperature: 23.0°C, Liquid Temperature: 22.0°C

Exposure Conditions

Band	Band n5	TSL Permittivity	42.5
Frequency [MHz] / Channel Number	836.5 / 167300	TSL Conductivity [S/m]	0.919
Group / UID	5G NR FR1 FDD / 10939-AAC	Phantom Section / TSL	Flat / HSL
Conversion Factor	8.38	Test Distance [mm]	10.00

DASY Configuration

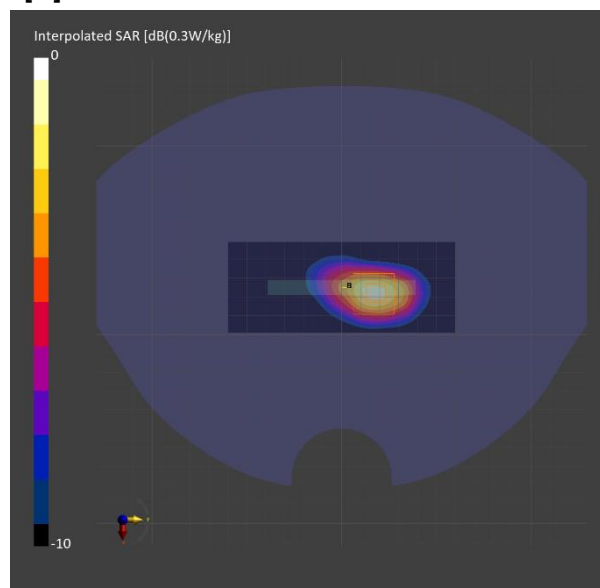
Probe Calibration Date	EX3DV4 - SN7645 2023-09-20	Phantom	Twin-SAM V8.0 (30deg probe tilt)
DAE Calibration Date	DAE4 Sn1671 2024-04-18	TSL Type	HBBL-600-10000
Software Version	16.2.2.1588		

Scan Setup

	Area Scan	Zoom Scan
Grid Extents [mm]	48.0 x 120.0	30.0 x 30.0 x 30.0
Grid Steps [mm]	8.0 x 15.0	6.0 x 6.0 x 1.5
Sensor Surface [mm]	3.0	1.4

Measurement Results

	Area Scan	Zoom Scan
psSAR1g [W/Kg]	0.184	0.179
psSAR10g [W/Kg]	0.106	0.094
Power Drift [dB]		-0.05
Dist 3dB Peak [mm]		9.9
M2/M1 [%]		85.1



Band n66: 5G NR (DFT-s-OFDM, 1 RB, 40 MHz, QPSK, 15 kHz) CHEEK

Room Ambient Temperature: 23.0°C, Liquid Temperature: 22.0°C

Exposure Conditions

Band	Band n66	TSL Permittivity	40.8
Frequency [MHz] / Channel Number	1745.0 / 349000	TSL Conductivity [S/m]	1.32
Group / UID	5G NR FR1 FDD / 10934-AAC	Phantom Section / TSL	LeftHead / HSL
Conversion Factor	7.94	Test Distance [mm]	0.00

DASY Configuration

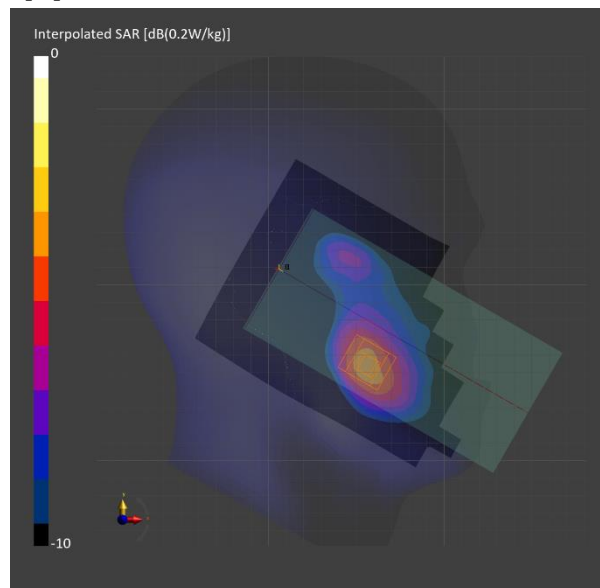
Probe Calibration Date	EX3DV4 - SN7646 2024-03-15	Phantom	Twin-SAM V8.0 (30deg probe tilt)
DAE Calibration Date	DAE4 Sn1670 2024-05-15	TSL Type	HBBL-600-10000
Software Version	16.2.2.1588		

Scan Setup

	Area Scan	Zoom Scan
Grid Extents [mm]	120.0 x 210.0	32.0 x 32.0 x 30.0
Grid Steps [mm]	15.0 x 15.0	6.0 x 6.0 x 1.5
Sensor Surface [mm]	3.0	1.4

Measurement Results

	Area Scan	Zoom Scan
psSAR1g [W/Kg]	0.072	0.076
psSAR10g [W/Kg]	0.043	0.050
Power Drift [dB]		-0.01
Dist 3dB Peak [mm]		13.7
M2/M1 [%]		93.0



Band n66: 5G NR (DFT-s-OFDM, 1 RB, 40 MHz, QPSK, 15 kHz) EDGE BOTTOM

Room Ambient Temperature: 23.0°C, Liquid Temperature: 22.0°C

Exposure Conditions

Band	Band n66	TSL Permittivity	40.8
Frequency [MHz] / Channel Number	1745.0 / 349000	TSL Conductivity [S/m]	1.32
Group / UID	5G NR FR1 FDD / 10934-AAC	Phantom Section / TSL	Flat / HSL
Conversion Factor	7.94	Test Distance [mm]	10.00

DASY Configuration

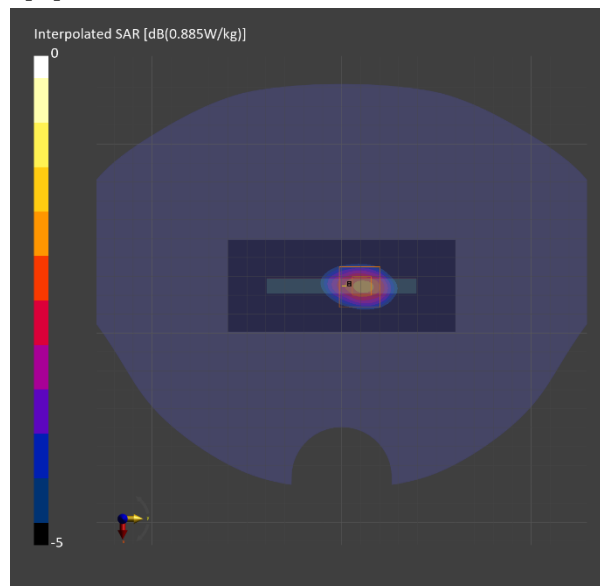
Probe Calibration Date	EX3DV4 - SN7646 2024-03-15	Phantom	Twin-SAM V8.0 (30deg probe tilt)
DAE Calibration Date	DAE4 Sn1670 2024-05-15	TSL Type	HBBL-600-10000
Software Version	16.2.2.1588		

Scan Setup

	Area Scan	Zoom Scan
Grid Extents [mm]	48.6 x 120.0	32.0 x 32.0 x 30.0
Grid Steps [mm]	8.1 x 15.0	6.0 x 6.0 x 1.5
Sensor Surface [mm]	3.0	1.4

Measurement Results

	Area Scan	Zoom Scan
psSAR1g [W/Kg]	0.468	0.486
psSAR10g [W/Kg]	0.259	0.273
Power Drift [dB]		-0.12
Dist 3dB Peak [mm]		12.0
M2/M1 [%]		81.8



Band n41: 5G NR (DFT-s-OFDM, 50% RB, 100 MHz, QPSK, 30 kHz) CHEEK

Room Ambient Temperature: 23.0°C, Liquid Temperature: 22.0°C

Exposure Conditions

Band	Band n41	TSL Permittivity	39.1
Frequency [MHz] / Channel Number	2592.990 / 518598	TSL Conductivity [S/m]	1.88
Group / UID	5G NR FR1 TDD / 10917-AAD	Phantom Section / TSL	LeftHead / Head Simulating Liquid
Conversion Factor	7.28	Test Distance [mm]	0.00

DASY Configuration

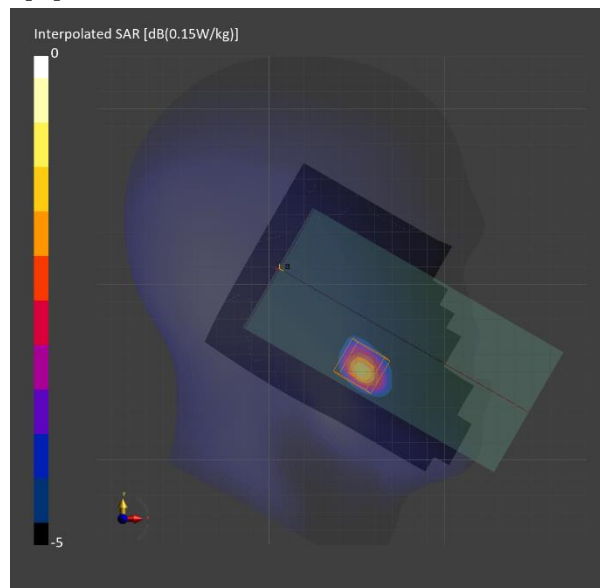
Probe Calibration Date	EX3DV4 - SN7314 2024-05-23	Phantom	Twin-SAM V8.0 (30deg probe tilt)
DAE Calibration Date	DAE4 Sn1668 2024-04-18	TSL Type	HBBL-600-10000
Software Version	16.4.0.5005		

Scan Setup

	Area Scan	Zoom Scan
Grid Extents [mm]	120.0 x 200.0	30.0 x 30.0 x 30.0
Grid Steps [mm]	10.0 x 10.0	5.0 x 5.0 x 1.5
Sensor Surface [mm]	3.0	1.4

Measurement Results

	Area Scan	Zoom Scan
psSAR1g [W/Kg]	0.086	0.089
psSAR10g [W/Kg]	0.043	0.046
Power Drift [dB]		0.15
Dist 3dB Peak [mm]		10.5
M2/M1 [%]		84.8



Band n41: 5G NR (DFT-s-OFDM, 1 RB, 100 MHz, QPSK, 30 kHz) EDGE BOTTOM

Room Ambient Temperature: 23.0°C, Liquid Temperature: 22.0°C

Exposure Conditions

Band	Band n41	TSL Permittivity	39.1
Frequency [MHz] / Channel Number	2592.990 / 518598	TSL Conductivity [S/m]	1.88
Group / UID	5G NR FR1 TDD / 10866-AAF	Phantom Section / TSL	Flat / Head Simulating Liquid
Conversion Factor	7.28	Test Distance [mm]	10.00

DASY Configuration

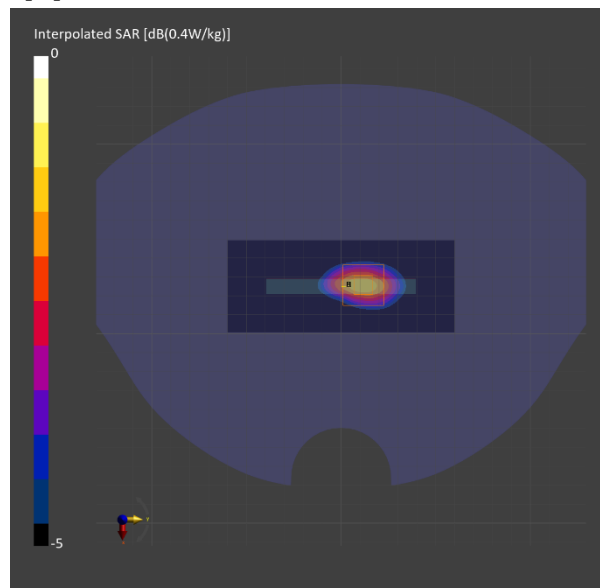
Probe Calibration Date	EX3DV4 - SN7314 2024-05-23	Phantom	Twin-SAM V8.0 (30deg probe tilt)
DAE Calibration Date	DAE4 Sn1668 2024-04-18	TSL Type	HBBL-600-10000
Software Version	16.4.0.5005		

Scan Setup

	Area Scan	Zoom Scan
Grid Extents [mm]	48.6 x 120.0	30.0 x 30.0 x 30.0
Grid Steps [mm]	8.1 x 10.0	5.0 x 5.0 x 1.5
Sensor Surface [mm]	3.0	1.4

Measurement Results

	Area Scan	Zoom Scan
psSAR1g [W/Kg]	0.232	0.239
psSAR10g [W/Kg]	0.116	0.125
Power Drift [dB]		-0.01
Dist 3dB Peak [mm]		11.8
M2/M1 [%]		80.7



Band n41(SRS 1): 5G NR Custom Band: CW, TILT

Room Ambient Temperature: 23.0°C, Liquid Temperature: 22.0°C

Exposure Conditions

Band	Custom Band	TSL Permittivity	39.8
Frequency [MHz] / Channel Number	2593.000 / 2593000	TSL Conductivity [S/m]	1.91
Group / UID	CW / 0--	Phantom Section / TSL	LeftHead / Head Simulating Liquid
Conversion Factor	7.28	Test Distance [mm]	0.00

DASY Configuration

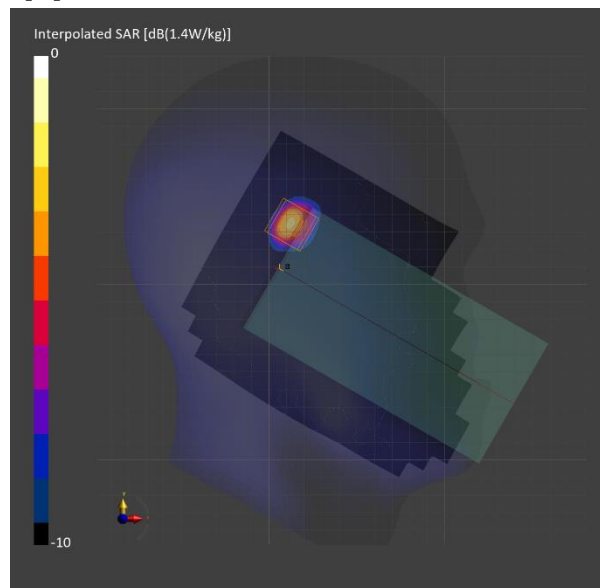
Probe Calibration Date	EX3DV4 - SN7314 2024-05-23	Phantom	Twin-SAM V8.0 (30deg probe tilt)
DAE Calibration Date	DAE4 Sn1668 2024-04-18	TSL Type	HBBL-600-10000
Software Version	16.4.0.5005		

Scan Setup

	Area Scan	Zoom Scan
Grid Extents [mm]	140.0 x 200.0	30.0 x 30.0 x 30.0
Grid Steps [mm]	10.0 x 10.0	5.0 x 5.0 x 1.5
Sensor Surface [mm]	3.0	1.4

Measurement Results

	Area Scan	Zoom Scan
psSAR1g [W/Kg]	0.600	0.680
psSAR10g [W/Kg]	0.248	0.261
Power Drift [dB]		-0.01
Dist 3dB Peak [mm]		7.0
M2/M1 [%]		77.0



Band n41(SRS 2): 5G NR Custom Band: CW, BACK

Room Ambient Temperature: 23.0°C, Liquid Temperature: 22.0°C

Exposure Conditions

Band	Custom Band	TSL Permittivity	39.8
Frequency [MHz] / Channel Number	2593.000 / 2593000	TSL Conductivity [S/m]	1.91
Group / UID	CW / 0--	Phantom Section / TSL	Flat / Head Simulating Liquid
Conversion Factor	7.28	Test Distance [mm]	10.00

DASY Configuration

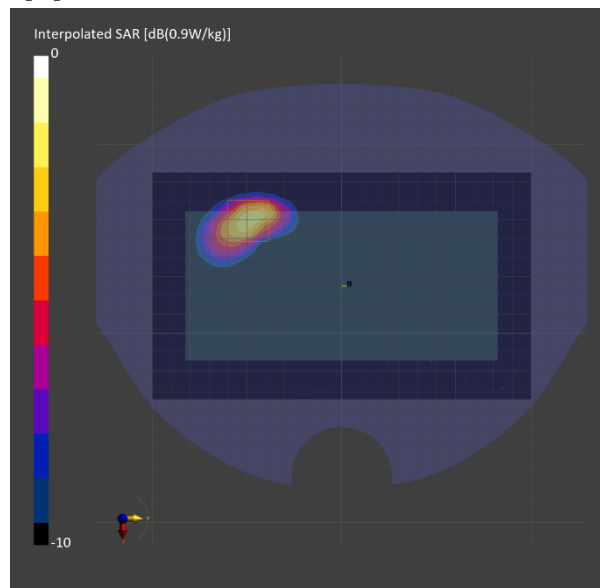
Probe Calibration Date	EX3DV4 - SN7314 2024-05-23	Phantom	Twin-SAM V8.0 (30deg probe tilt)
DAE Calibration Date	DAE4 Sn1668 2024-04-18	TSL Type	HBBL-600-10000
Software Version	16.4.0.5005		

Scan Setup

	Area Scan	Zoom Scan
Grid Extents [mm]	120.0 x 200.0	30.0 x 30.0 x 30.0
Grid Steps [mm]	10.0 x 10.0	5.0 x 5.0 x 1.5
Sensor Surface [mm]	3.0	1.4

Measurement Results

	Area Scan	Zoom Scan
psSAR1g [W/Kg]	0.449	0.480
psSAR10g [W/Kg]	0.210	0.214
Power Drift [dB]		0.01
Dist 3dB Peak [mm]		7.3
M2/M1 [%]		77.7



WLAN 2.4GHz: IEEE 802.11b WiFi 2.4 GHz (DSSS, 1 Mbps, 99pc duty cycle), TILT

Room Ambient Temperature: 23.0°C, Liquid Temperature: 22.0°C

Exposure Conditions

Band	WLAN 2.4GHz	TSL Permittivity	40.5
Frequency [MHz] / Channel Number	2412.000 / 1	TSL Conductivity [S/m]	1.73
Group / UID	WLAN / 10415-AAA	Phantom Section / TSL	RightHead / Head Simulating Liquid
Conversion Factor	7.48	Test Distance [mm]	0.00

DASY Configuration

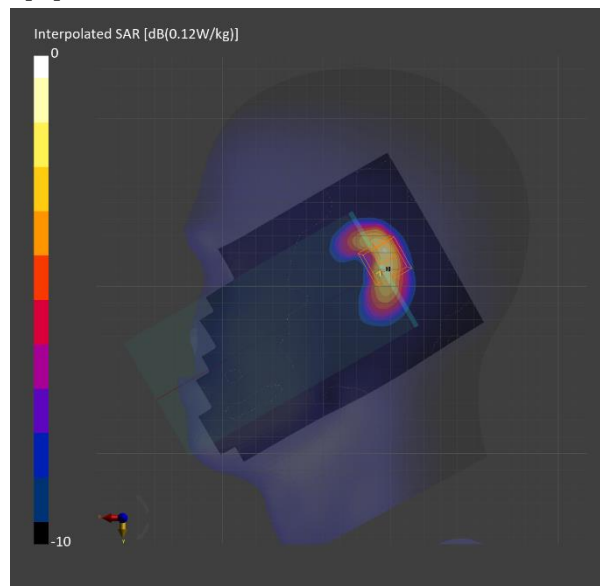
Probe Calibration Date	EX3DV4 - SN7314 2024-05-23	Phantom	Twin-SAM V8.0 (30deg probe tilt)
DAE Calibration Date	DAE4 Sn1668 2024-04-18	TSL Type	HBBL-600-10000
Software Version	16.4.0.5005		

Scan Setup

	Area Scan	Zoom Scan
Grid Extents [mm]	120.0 x 200.0	30.0 x 30.0 x 30.0
Grid Steps [mm]	10.0 x 10.0	5.0 x 5.0 x 1.5
Sensor Surface [mm]	3.0	1.4

Measurement Results

	Area Scan	Zoom Scan
psSAR1g [W/Kg]	0.060	0.065
psSAR10g [W/Kg]	0.030	0.031
Power Drift [dB]		-0.10
Dist 3dB Peak [mm]		6.1
M2/M1 [%]		78.3



WLAN 2.4GHz: IEEE 802.11b WiFi 2.4 GHz (DSSS, 1 Mbps, 99pc duty cycle), BACK

Room Ambient Temperature: 23.0°C, Liquid Temperature: 22.0°C

Exposure Conditions

Band	WLAN 2.4GHz	TSL Permittivity	40.5
Frequency [MHz] / Channel Number	2437.000 / 6	TSL Conductivity [S/m]	1.76
Group / UID	WLAN / 10415-AAA	Phantom Section / TSL	Flat / Head Simulating Liquid
Conversion Factor	7.48	Test Distance [mm]	10.00

DASY Configuration

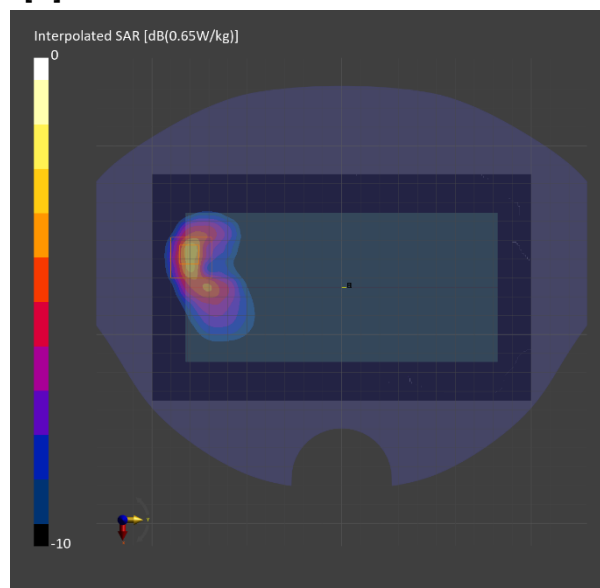
Probe Calibration Date	EX3DV4 - SN7314 2024-05-23	Phantom	Twin-SAM V8.0 (30deg probe tilt)
DAE Calibration Date	DAE4 Sn1668 2024-04-18	TSL Type	HBBL-600-10000
Software Version	16.4.0.5005		

Scan Setup

	Area Scan	Zoom Scan
Grid Extents [mm]	120.0 x 200.0	30.0 x 30.0 x 30.0
Grid Steps [mm]	10.0 x 10.0	5.0 x 5.0 x 1.5
Sensor Surface [mm]	3.0	1.4

Measurement Results

	Area Scan	Zoom Scan
psSAR1g [W/Kg]	0.256	0.264
psSAR10g [W/Kg]	0.115	0.118
Power Drift [dB]		-0.01
Dist 3dB Peak [mm]		7.1
M2/M1 [%]		80.3



U-NII-1, U-NII-2A: IEEE 802.11ac WiFi (80MHz, MCS0, 99pc duty cycle), TILT

Room Ambient Temperature: 23.0°C, Liquid Temperature: 22.0°C

Exposure Conditions

Band	U-NII-1, U-NII-2A	TSL Permittivity	35.3
Frequency [MHz] / Channel Number	5290.000 / 58	TSL Conductivity [S/m]	4.60
Group / UID	WLAN / 10544-AAC	Phantom Section / TSL	RightHead / Head Simulating Liquid
Conversion Factor	5.12	Test Distance [mm]	0.00

DASY Configuration

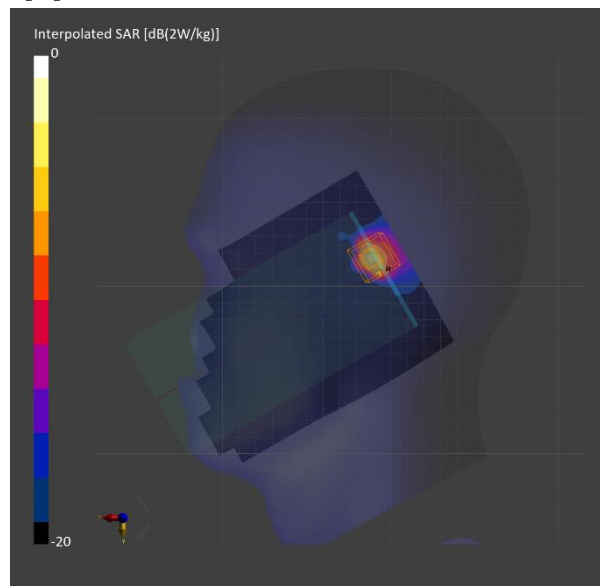
Probe Calibration Date	EX3DV4 - SN7645 2023-09-20	Phantom	Twin-SAM V8.0 (30deg probe tilt)
DAE Calibration Date	DAE4 Sn1671 2024-04-18	TSL Type	HBBL-600-10000
Software Version	16.4.0.5005		

Scan Setup

	Area Scan	Zoom Scan
Grid Extents [mm]	120.0 x 200.0	22.0 x 22.0 x 22.0
Grid Steps [mm]	10.0 x 10.0	4.0 x 4.0 x 1.4
Sensor Surface [mm]	3.0	1.4

Measurement Results

	Area Scan	Zoom Scan
psSAR1g [W/Kg]	0.432	0.435
psSAR10g [W/Kg]	0.125	0.118
Power Drift [dB]		-0.11
Dist 3dB Peak [mm]		6.7
M2/M1 [%]		64.3



U-NII-1, U-NII-2A: IEEE 802.11a/h WiFi 5 GHz (OFDM, 6 Mbps, 99pc duty cycle), BACK

Room Ambient Temperature: 23.0°C, Liquid Temperature: 22.0°C

Exposure Conditions

Band	U-NII-1, U-NII-2A	TSL Permittivity	35.3
Frequency [MHz] / Channel Number	5300.0 / 60	TSL Conductivity [S/m]	4.61
Group / UID	WLAN / 10417-AAC	Phantom Section / TSL	Flat / HSL
Conversion Factor	5.12	Test Distance [mm]	10.00

DASY Configuration

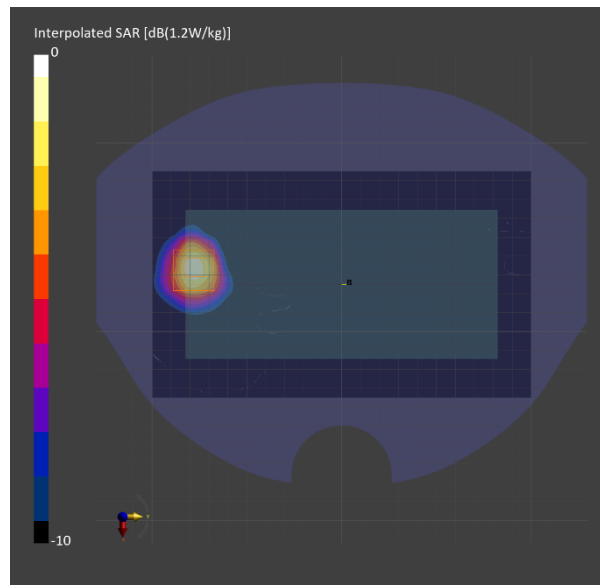
Probe Calibration Date	EX3DV4 - SN7645 2023-09-20	Phantom	Twin-SAM V8.0 (30deg probe tilt)
DAE Calibration Date	DAE4 Sn1671 2024-04-18	TSL Type	HBBL-600-10000
Software Version	16.2.2.1588		

Scan Setup

	Area Scan	Zoom Scan
Grid Extents [mm]	120.0 x 200.0	22.0 x 22.0 x 22.0
Grid Steps [mm]	10.0 x 10.0	4.0 x 4.0 x 1.4
Sensor Surface [mm]	3.0	1.4

Measurement Results

	Area Scan	Zoom Scan
psSAR1g [W/Kg]	0.698	0.731
psSAR10g [W/Kg]	0.258	0.254
Power Drift [dB]		-0.06
Dist 3dB Peak [mm]		9.7
M2/M1 [%]		65.4



U-NII-1, U-NII-2A: IEEE 802.11a/h WiFi 5 GHz (OFDM, 6 Mbps, 99pc duty cycle), EDGE TOP

Room Ambient Temperature: 23.0°C, Liquid Temperature: 22.0°C

Exposure Conditions

Band	U-NII-1, U-NII-2A	TSL Permittivity	36.9
Frequency [MHz] / Channel Number	5300.0 / 60	TSL Conductivity [S/m]	4.62
Group / UID	WLAN / 10417-AAC	Phantom Section / TSL	Flat / HSL
Conversion Factor	5.12	Test Distance [mm]	0.00

DASY Configuration

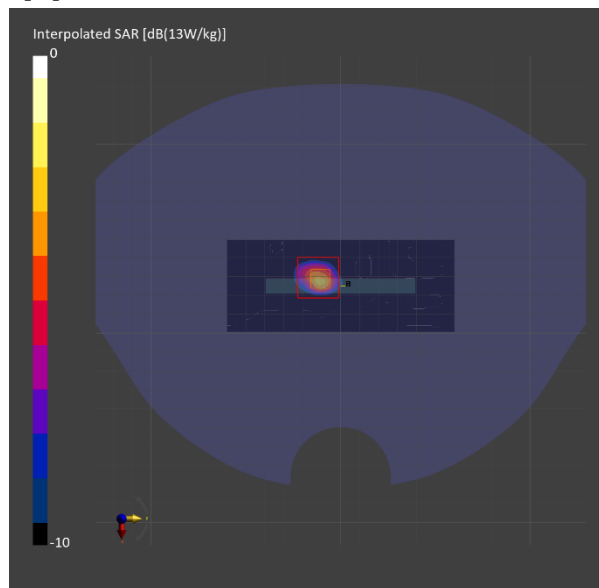
Probe Calibration Date	EX3DV4 - SN7645 2023-09-20	Phantom	Twin-SAM V8.0 (30deg probe tilt)
DAE Calibration Date	DAE4 Sn1671 2024-04-18	TSL Type	HBBL-600-10000
Software Version	16.2.2.1588		

Scan Setup

	Area Scan	Zoom Scan
Grid Extents [mm]	48.6 x 120.0	22.0 x 22.0 x 22.0
Grid Steps [mm]	8.1 x 10.0	3.9 x 3.9 x 1.4
Sensor Surface [mm]	3.0	1.4

Measurement Results

	Area Scan	Zoom Scan
psSAR1g [W/Kg]	4.11	4.81
psSAR10g [W/Kg]	1.12	1.23
Power Drift [dB]		-0.06
Dist 3dB Peak [mm]		5.3
M2/M1 [%]		63.6



U-NII-2C Standalone: IEEE 802.11ac WiFi (80MHz, MCS0, 99pc duty cycle), TILT

Room Ambient Temperature: 23.0°C, Liquid Temperature: 22.0°C

Exposure Conditions

Band	U-NII-2C Standalone	TSL Permittivity	34.7
Frequency [MHz] / Channel Number	5610.000 / 122	TSL Conductivity [S/m]	4.96
Group / UID	WLAN / 10544-AAC	Phantom Section / TSL	LeftHead / Head Simulating Liquid
Conversion Factor	4.57	Test Distance [mm]	0.00

DASY Configuration

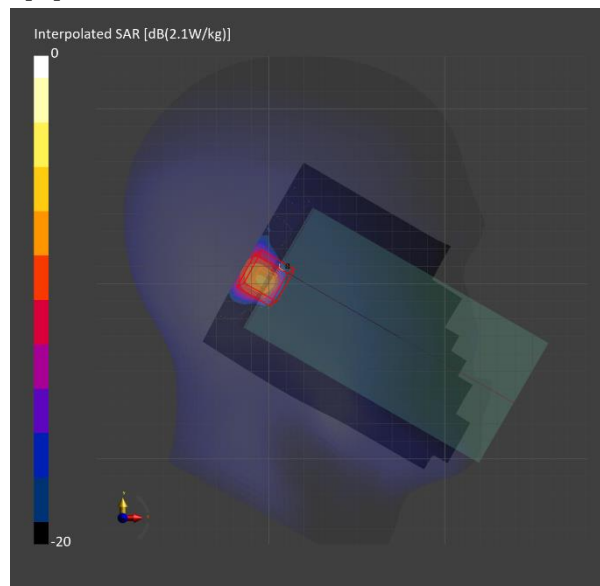
Probe Calibration Date	EX3DV4 - SN7645 2023-09-20	Phantom	Twin-SAM V8.0 (30deg probe tilt)
DAE Calibration Date	DAE4 Sn1671 2024-04-18	TSL Type	HBBL-600-10000
Software Version	16.4.0.5005		

Scan Setup

	Area Scan	Zoom Scan
Grid Extents [mm]	120.0 x 200.0	22.0 x 22.0 x 22.0
Grid Steps [mm]	10.0 x 10.0	4.0 x 4.0 x 1.4
Sensor Surface [mm]	3.0	1.4

Measurement Results

	Area Scan	Zoom Scan
psSAR1g [W/Kg]	0.343	0.308
psSAR10g [W/Kg]	0.115	0.088
Power Drift [dB]		0.01
Dist 3dB Peak [mm]		8.5
M2/M1 [%]		61.3



U-NII-2C Standalone: IEEE 802.11a/h WiFi 5 GHz (OFDM, 6 Mbps, 99pc duty cycle), BACK
 Room Ambient Temperature: 23.0°C, Liquid Temperature: 22.0°C

Exposure Conditions

Band	U-NII-2C Standalone	TSL Permittivity	36.4
Frequency [MHz] / Channel Number	5620.0 / 124	TSL Conductivity [S/m]	4.95
Group / UID	WLAN / 10417-AAC	Phantom Section / TSL	Flat / HSL
Conversion Factor	4.57	Test Distance [mm]	10.00

DASY Configuration

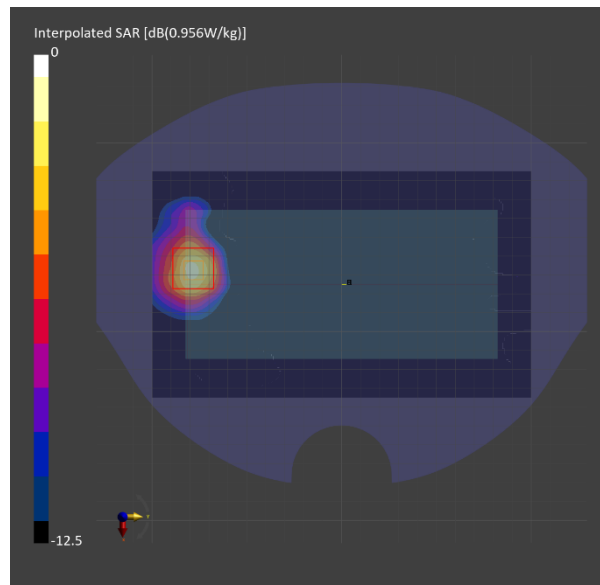
Probe Calibration Date	EX3DV4 - SN7645 2023-09-20	Phantom	Twin-SAM V8.0 (30deg probe tilt)
DAE Calibration Date	DAE4 Sn1671 2024-04-18	TSL Type	HBBL-600-10000
Software Version	16.2.2.1588		

Scan Setup

	Area Scan	Zoom Scan
Grid Extents [mm]	120.0 x 200.0	22.0 x 22.0 x 22.0
Grid Steps [mm]	10.0 x 10.0	4.0 x 4.0 x 1.4
Sensor Surface [mm]	3.0	1.4

Measurement Results

	Area Scan	Zoom Scan
psSAR1g [W/Kg]	0.469	0.465
psSAR10g [W/Kg]	0.173	0.152
Power Drift [dB]		-0.16
Dist 3dB Peak [mm]		10.3
M2/M1 [%]		59.5



U-NII-2C Standalone: IEEE 802.11a/h WiFi 5 GHz (OFDM, 6 Mbps, 99pc duty cycle), EDGE TOP

Room Ambient Temperature: 23.0°C, Liquid Temperature: 22.0°C

Exposure Conditions

Band	U-NII-2C Standalone	TSL Permittivity	34.8
Frequency [MHz] / Channel Number	5620.0 / 124	TSL Conductivity [S/m]	4.95
Group / UID	WLAN / 10417-AAC	Phantom Section / TSL	Flat / HSL
Conversion Factor	4.57	Test Distance [mm]	0.00

DASY Configuration

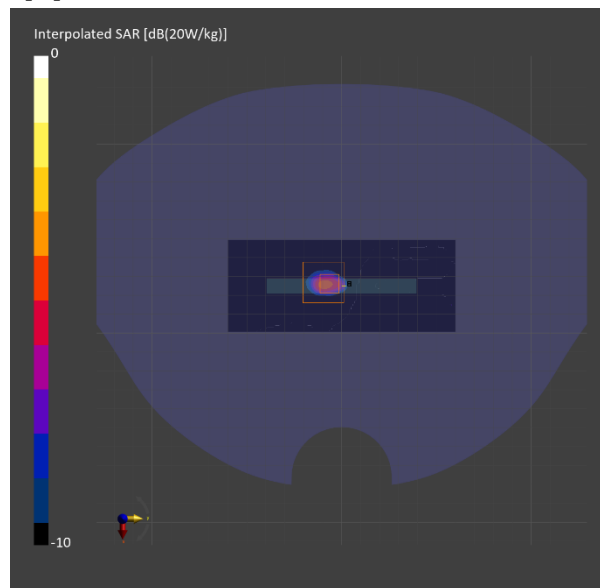
Probe Calibration Date	EX3DV4 - SN7645 2023-09-20	Phantom	Twin-SAM V8.0 (30deg probe tilt)
DAE Calibration Date	DAE4 Sn1671 2024-04-18	TSL Type	HBBL-600-10000
Software Version	16.2.2.1588		

Scan Setup

	Area Scan	Zoom Scan
Grid Extents [mm]	48.6 x 120.0	22.0 x 22.0 x 22.0
Grid Steps [mm]	8.1 x 10.0	2.6 x 2.6 x 1.2
Sensor Surface [mm]	3.0	1.4

Measurement Results

	Area Scan	Zoom Scan
psSAR1g [W/Kg]	4.32	4.88
psSAR10g [W/Kg]	1.07	1.19
Power Drift [dB]		-0.09
Dist 3dB Peak [mm]		4.2
M2/M1 [%]		61.8



WLAN 5GHz: IEEE 802.11ac WiFi (80MHz, MCS0, 99pc duty cycle), TILT

Room Ambient Temperature: 23.0°C, Liquid Temperature: 22.0°C

Exposure Conditions

Band	WLAN 5GHz	TSL Permittivity	34.4
Frequency [MHz] / Channel Number	5775.0 / 155	TSL Conductivity [S/m]	5.08
Group / UID	WLAN / 10544-AAC	Phantom Section / TSL	LeftHead / HSL
Conversion Factor	4.54	Test Distance [mm]	0.00

DASY Configuration

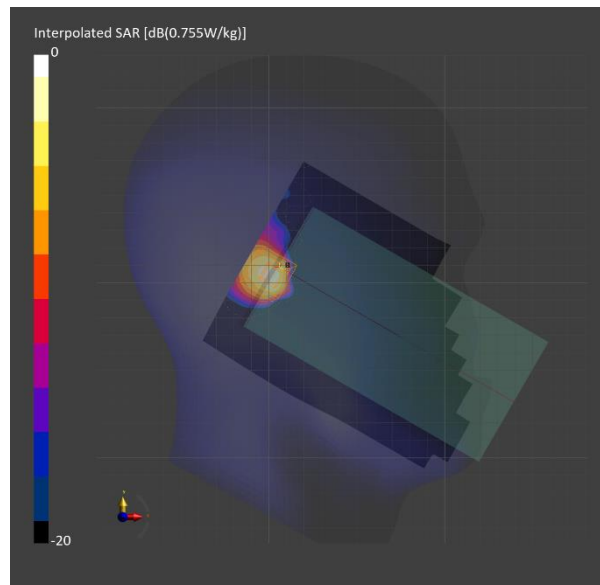
Probe Calibration Date	EX3DV4 - SN7645 2023-09-20	Phantom	Twin-SAM V8.0 (30deg probe tilt)
DAE Calibration Date	DAE4 Sn1671 2024-04-18	TSL Type	HBBL-600-10000
Software Version	16.2.2.1588		

Scan Setup

	Area Scan	Zoom Scan
Grid Extents [mm]	120.0 x 200.0	22.0 x 22.0 x 22.0
Grid Steps [mm]	10.0 x 10.0	4.0 x 4.0 x 1.4
Sensor Surface [mm]	3.0	1.4

Measurement Results

	Area Scan	Zoom Scan
psSAR1g [W/Kg]	0.321	0.309
psSAR10g [W/Kg]	0.109	0.092
Power Drift [dB]		0.12
Dist 3dB Peak [mm]		6.9
M2/M1 [%]		62.2



U-NII-3 Standalone: IEEE 802.11a/h WiFi 5 GHz (OFDM, 6 Mbps, 99pc duty cycle), EDGE TOP
 Room Ambient Temperature: 23.0°C, Liquid Temperature: 22.0°C

Exposure Conditions

Band	U-NII-3 Standalone	TSL Permittivity	34.5
Frequency [MHz] / Channel Number	5745.0 / 149	TSL Conductivity [S/m]	5.06
Group / UID	WLAN / 10417-AAC	Phantom Section / TSL	Flat / HSL
Conversion Factor	4.54	Test Distance [mm]	10.00

DASY Configuration

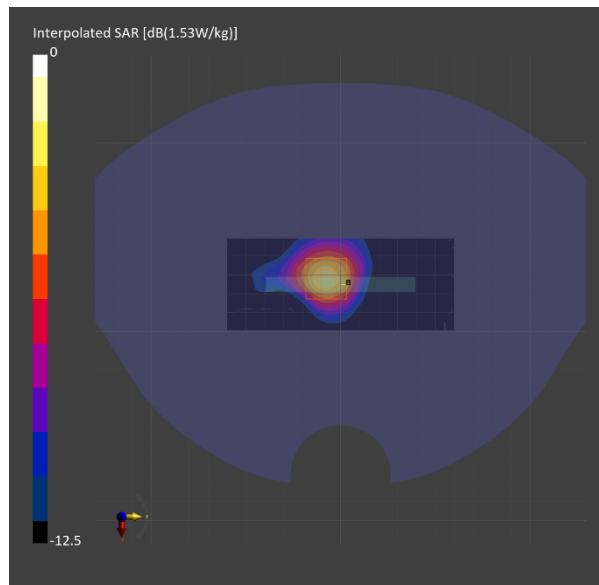
Probe Calibration Date	EX3DV4 - SN7645 2023-09-20	Phantom	Twin-SAM V8.0 (30deg probe tilt)
DAE Calibration Date	DAE4 Sn1671 2024-04-18	TSL Type	HBBL-600-10000
Software Version	16.2.2.1588		

Scan Setup

	Area Scan	Zoom Scan
Grid Extents [mm]	48.6 x 120.0	22.0 x 22.0 x 22.0
Grid Steps [mm]	8.1 x 10.0	4.0 x 4.0 x 1.4
Sensor Surface [mm]	3.0	1.4

Measurement Results

	Area Scan	Zoom Scan
psSAR1g [W/Kg]	0.672	0.709
psSAR10g [W/Kg]	0.245	0.248
Power Drift [dB]		-0.17
Dist 3dB Peak [mm]		9.7
M2/M1 [%]		62.2



ISM 2.4 GHz Band: IEEE 802.15.1 Bluetooth (GFSK, DH5), TILT

Room Ambient Temperature: 23.0°C, Liquid Temperature: 22.0°C

Exposure Conditions

Band	ISM 2.4 GHz Band	TSL Permittivity	40.5
Frequency [MHz] / Channel Number	2441.000 / 39	TSL Conductivity [S/m]	1.76
Group / UID	Bluetooth / 10032-CAA	Phantom Section / TSL	RightHead / Head Simulating Liquid
Conversion Factor	7.48	Test Distance [mm]	0.00

DASY Configuration

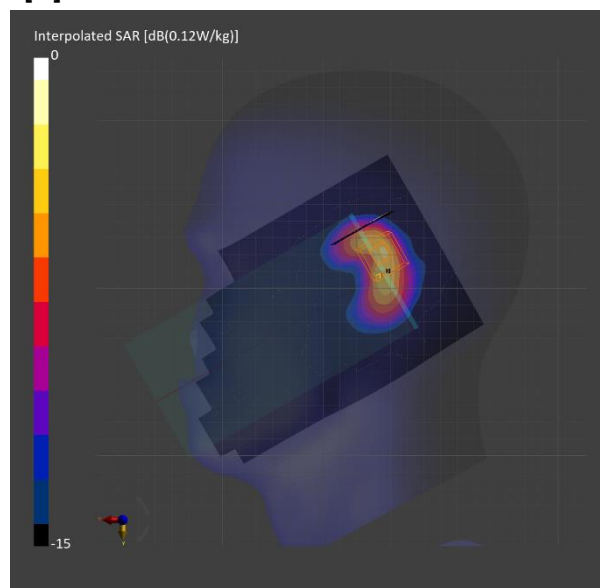
Probe Calibration Date	EX3DV4 - SN7314 2024-05-23	Phantom	Twin-SAM V8.0 (30deg probe tilt)
DAE Calibration Date	DAE4 Sn1668 2024-04-18	TSL Type	HBBL-600-10000
Software Version	16.4.0.5005		

Scan Setup

	Area Scan	Zoom Scan
Grid Extents [mm]	120.0 x 200.0	30.0 x 30.0 x 30.0
Grid Steps [mm]	10.0 x 10.0	5.0 x 5.0 x 1.5
Sensor Surface [mm]	3.0	1.4

Measurement Results

	Area Scan	Zoom Scan
psSAR1g [W/Kg]	0.039	0.043
psSAR10g [W/Kg]	0.019	0.019
Power Drift [dB]		-0.14
Dist 3dB Peak [mm]		6.4
M2/M1 [%]		81.8



ISM 2.4 GHz Band: IEEE 802.15.1 Bluetooth (GFSK, DH5), BACK

Room Ambient Temperature: 23.0°C, Liquid Temperature: 22.0°C

Exposure Conditions

Band	ISM 2.4 GHz Band	TSL Permittivity	38.9
Frequency [MHz] / Channel Number	2441.000 / 39	TSL Conductivity [S/m]	1.75
Group / UID	Bluetooth / 10032-CAA	Phantom Section / TSL	Flat / Head Simulating Liquid
Conversion Factor	7.48	Test Distance [mm]	10.00

DASY Configuration

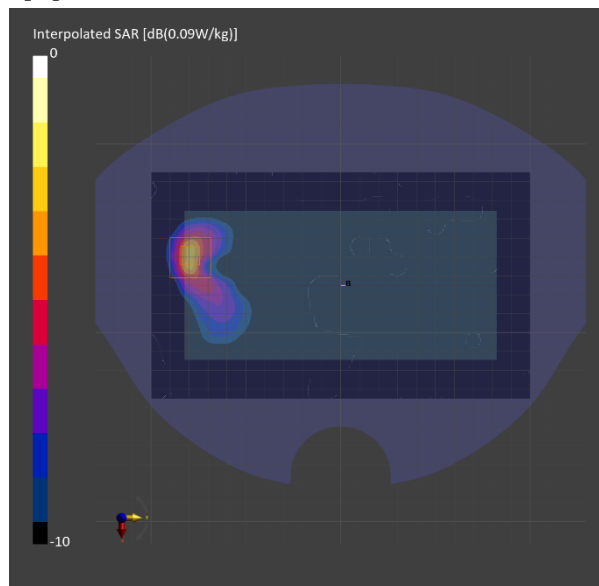
Probe Calibration Date	EX3DV4 - SN7314 2024-05-23	Phantom	Twin-SAM V8.0 (30deg probe tilt)
DAE Calibration Date	DAE4 Sn1668 2024-04-18	TSL Type	HBBL-600-10000
Software Version	16.4.0.5005		

Scan Setup

	Area Scan	Zoom Scan
Grid Extents [mm]	120.0 x 200.0	30.0 x 30.0 x 30.0
Grid Steps [mm]	10.0 x 10.0	5.0 x 5.0 x 1.5
Sensor Surface [mm]	3.0	1.4

Measurement Results

	Area Scan	Zoom Scan
psSAR1g [W/Kg]	0.034	0.034
psSAR10g [W/Kg]	0.015	0.015
Power Drift [dB]		0.14
Dist 3dB Peak [mm]		7.3
M2/M1 [%]		76.6



Custom Band: CW, BACK

Room Ambient Temperature: 23.0°C, Liquid Temperature: 22.0°C

Exposure Conditions

Band	Custom Band	TSL Permittivity	53.6
Frequency [MHz] / Channel Number	13.6 / 13600	TSL Conductivity [S/m]	0.739
Group / UID	CW / 0--	Phantom Section / TSL	Flat / HSL
Conversion Factor	16.85	Test Distance [mm]	0.00

DASY Configuration

Probe Calibration Date	EX3DV4 - SN7646 2024-03-15	Phantom	ELI V6.0 (20deg probe tilt)
DAE Calibration Date	DAE4 Sn1670 2024-05-15	TSL Type	HBBL-600-10000
Software Version	16.2.2.1588		

Scan Setup

	Area Scan	Zoom Scan
Grid Extents [mm]	120.0 x 210.0	36.0 x 36.0 x 30.0
Grid Steps [mm]	15.0 x 15.0	6.0 x 6.0 x 1.5
Sensor Surface [mm]	3.0	1.4

Measurement Results

	Area Scan	Zoom Scan
psSAR1g [W/Kg]	0.070	0.050
psSAR10g [W/Kg]	0.049	0.018
Power Drift [dB]		-0.16
Dist 3dB Peak [mm]		3.6
M2/M1 [%]		50.1

