

Measurement Report for GSM 850: GPRS-FDD (TDMA, GMSK, TN 0-1-2-3), CHEEK

Exposure Conditions

Band	GSM 850	TSL Permittivity	42.0
Frequency [MHz] Channel Number	836.6 190	TSL Conductivity [S/m]	0.906
Group UID	GSM 10028-DAC	Phantom Section TSL	LeftHead HSL
Conversion Factor	9.32	Test Distance [mm]	0.00

Hardware Setup

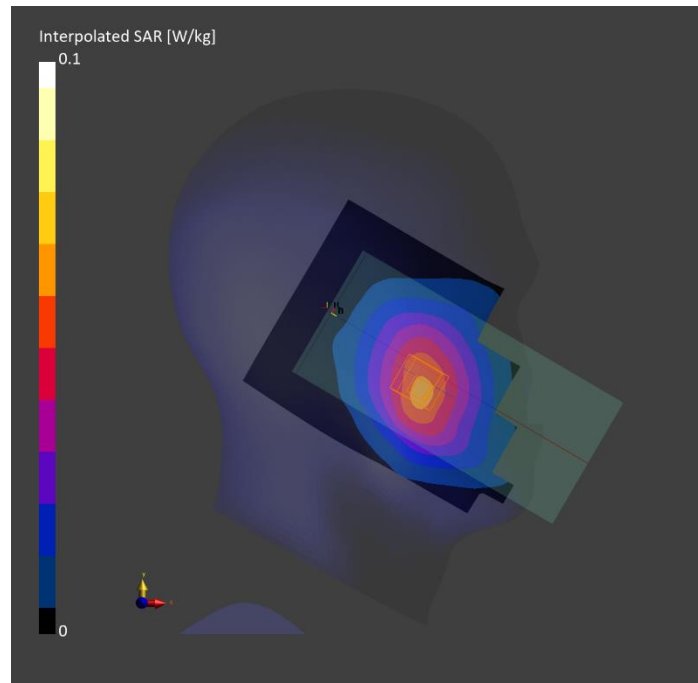
Probe Calibration Date	EX3DV4 - SN7463 2022-05-27	Phantom	Twin-SAM V8.0 (30deg probe tilt)
DAE Calibration Date	DAE4 Sn1257 2022-09-20	TSL Type	HBBL-600-10000

Scans Setup

	Area Scan	Zoom Scan
Grid Extents [mm]	120.0 x 210.0	30.0 x 30.0 x 30.0
Grid Steps [mm]	15.0 x 15.0	6.0 x 6.0 x 1.5
Sensor Surface [mm]	3.0	1.4
Graded Grid	n/a	Yes
M2/M1 [%]		95.5
Dist 3dB Peak [mm]		20.2

Measurement Results

	Area Scan	Zoom Scan
psSAR1g [W/Kg]	0.054	0.056
psSAR10g [W/Kg]	0.037	0.043
Power Drift [dB]	n/a	0.07



Measurement Report for GSM 850: GPRS-FDD (TDMA, GMSK, TN 0-1-2-3), FRONT

Exposure Conditions

Band	GSM 850	TSL Permittivity	42.0
Frequency [MHz] Channel Number	836.6 190	TSL Conductivity [S/m]	0.906
Group UID	GSM 10028-DAC	Phantom Section TSL	Flat HSL
Conversion Factor	9.32	Test Distance [mm]	15.00

Hardware Setup

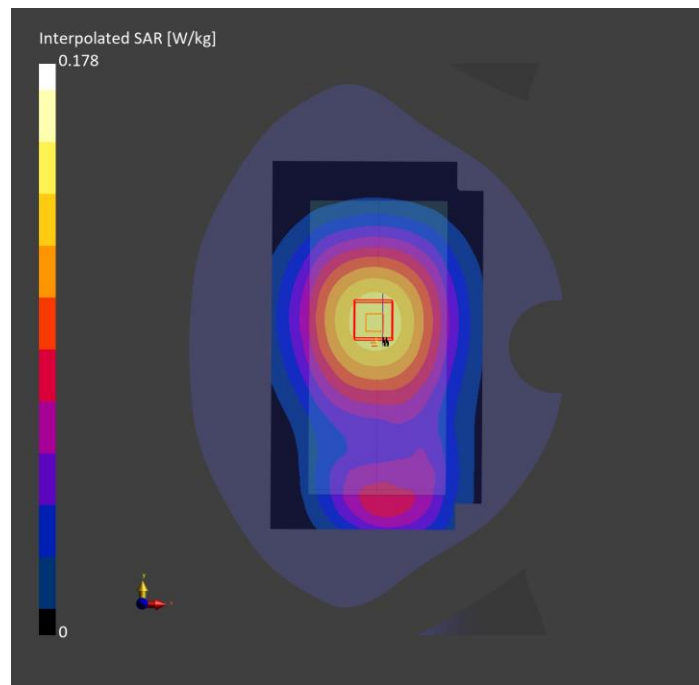
Probe Calibration Date	EX3DV4 - SN7463 2022-05-27	Phantom	Twin-SAM V8.0 (30deg probe tilt)
DAE Calibration Date	DAE4 Sn1257 2022-09-20	TSL Type	HBBL-600-10000

Scans Setup

	Area Scan	Zoom Scan
Grid Extents [mm]	120.0 x 210.0	30.0 x 30.0 x 30.0
Grid Steps [mm]	15.0 x 15.0	6.0 x 6.0 x 1.5
Sensor Surface [mm]	3.0	1.4
Graded Grid	n/a	Yes
M2/M1 [%]		91.0
Dist 3dB Peak [mm]		> 15.0

Measurement Results

	Area Scan	Zoom Scan
psSAR1g [W/Kg]	0.129	0.135
psSAR10g [W/Kg]	0.091	0.104
Power Drift [dB]	n/a	-0.15



Measurement Report for GSM 850: GPRS-FDD (TDMA, GMSK, TN 0-1-2-3), EDGE RIGHT

Exposure Conditions

Band	GSM 850	TSL Permittivity	42.0
Frequency [MHz] Channel Number	836.6 190	TSL Conductivity [S/m]	0.906
Group UID	GSM 10028-DAC	Phantom Section TSL	Flat HSL
Conversion Factor	9.32	Test Distance [mm]	10.00

Hardware Setup

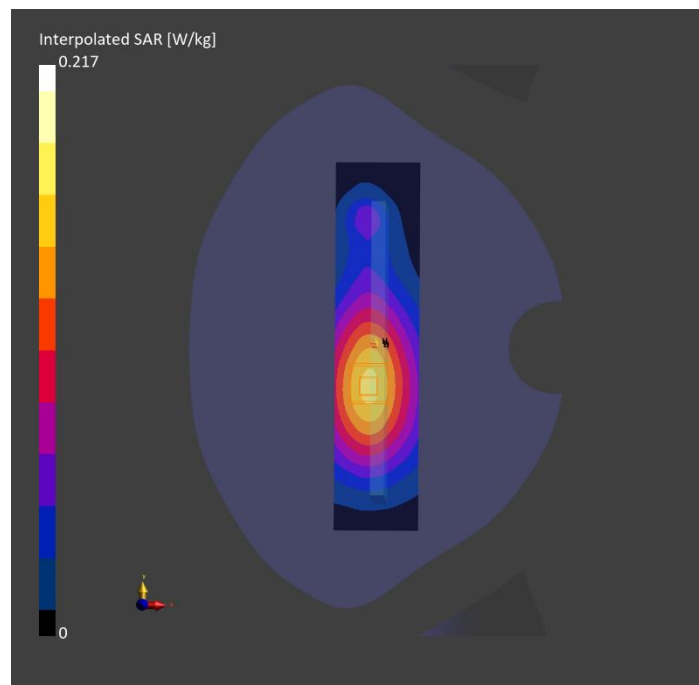
Probe Calibration Date	EX3DV4 - SN7463 2022-05-27	Phantom	Twin-SAM V8.0 (30deg probe tilt)
DAE Calibration Date	DAE4 Sn1257 2022-09-20	TSL Type	HBBL-600-10000

Scans Setup

	Area Scan	Zoom Scan
Grid Extents [mm]	48.0 x 210.0	30.0 x 30.0 x 30.0
Grid Steps [mm]	8.0 x 15.0	6.0 x 6.0 x 1.5
Sensor Surface [mm]	3.0	1.4
Graded Grid	n/a	Yes
M2/M1 [%]		89.2
Dist 3dB Peak [mm]		> 15.0

Measurement Results

	Area Scan	Zoom Scan
psSAR1g [W/Kg]	0.148	0.153
psSAR10g [W/Kg]	0.101	0.108
Power Drift [dB]	n/a	0.00



Measurement Report for PCS 1900: GPRS-FDD (TDMA, GMSK, TN 0-1), CHEEK

Exposure Conditions

Band	PCS 1900	TSL Permittivity	39.8
Frequency [MHz] Channel Number	1880.0 661	TSL Conductivity [S/m]	1.38
Group UID	GSM 10024-DAC	Phantom Section TSL	LeftHead HSL
Conversion Factor	8.12	Test Distance [mm]	0.00

Hardware Setup

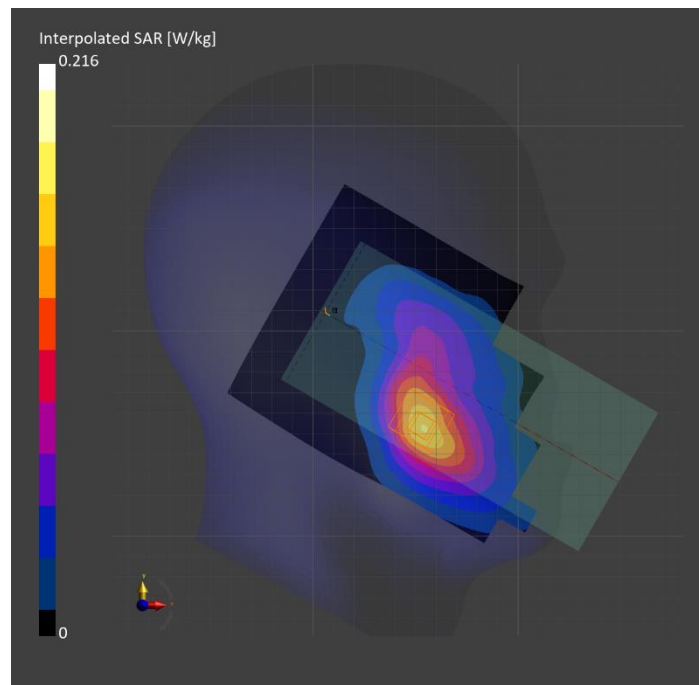
Probe Calibration Date	EX3DV4 - SN7463 2022-05-27	Phantom	Twin-SAM V8.0 (30deg probe tilt)
DAE Calibration Date	DAE4 Sn1257 2022-09-20	TSL Type	HBBL-600-10000

Scan Setup

	Area Scan	Zoom Scan
Grid Extents [mm]	120.0 x 210.0	30.0 x 30.0 x 30.0
Grid Steps [mm]	15.0 x 15.0	6.0 x 6.0 x 1.5
Sensor Surface [mm]	3.0	1.4
Graded Grid	n/a	Yes
M2/M1 [%]		87.1
Dist 3dB Peak [mm]		14.0

Measurement Results

	Area Scan	Zoom Scan
psSAR1g [W/Kg]	0.134	0.140
psSAR10g [W/Kg]	0.079	0.089
Power Drift [dB]	n/a	-0.11



Measurement Report for PCS 1900: GPRS-FDD (TDMA, GMSK, TN 0-1), BACK

Exposure Conditions

Band	PCS 1900	TSL Permittivity	39.8
Frequency [MHz] Channel Number	1880.0 661	TSL Conductivity [S/m]	1.38
Group UID	GSM 10024-DAC	Phantom Section TSL	Flat HSL
Conversion Factor	8.12	Test Distance [mm]	15.00

Hardware Setup

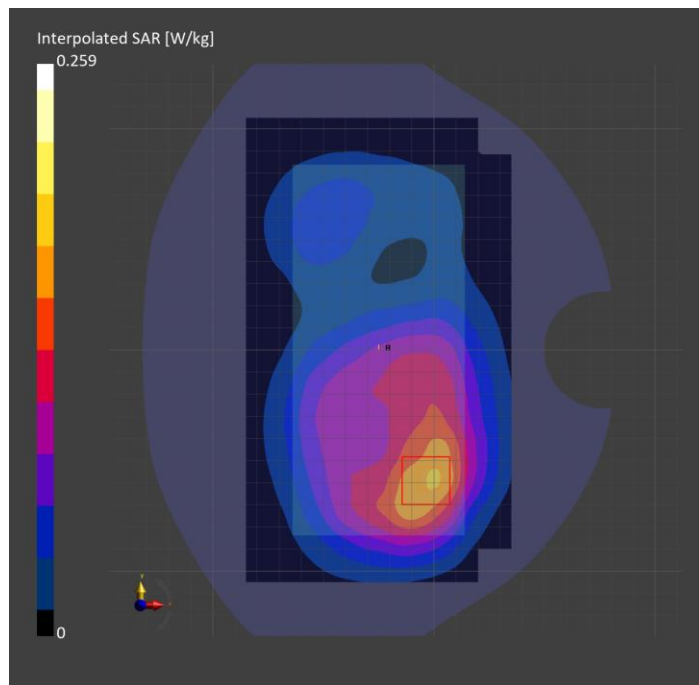
Probe Calibration Date	EX3DV4 - SN7463 2022-05-27	Phantom	Twin-SAM V8.0 (30deg probe tilt)
DAE Calibration Date	DAE4 Sn1257 2022-09-20	TSL Type	HBBL-600-10000

Scan Setup

	Area Scan	Zoom Scan
Grid Extents [mm]	120.0 x 210.0	30.0 x 30.0 x 30.0
Grid Steps [mm]	15.0 x 15.0	6.0 x 6.0 x 1.5
Sensor Surface [mm]	3.0	1.4
Graded Grid	n/a	Yes
M2/M1 [%]		84.4
Dist 3dB Peak [mm]		17.1

Measurement Results

	Area Scan	Zoom Scan
psSAR1g [W/Kg]	0.148	0.153
psSAR10g [W/Kg]	0.091	0.094
Power Drift [dB]	n/a	-0.01



Measurement Report for PCS 1900: GPRS-FDD (TDMA, GMSK, TN 0-1), BACK

Exposure Conditions

Band	PCS 1900	TSL Permittivity	39.8
Frequency [MHz] Channel Number	1880.0 661	TSL Conductivity [S/m]	1.38
Group UID	GSM 10024-DAC	Phantom Section TSL	Flat HSL
Conversion Factor	8.12	Test Distance [mm]	10.00

Hardware Setup

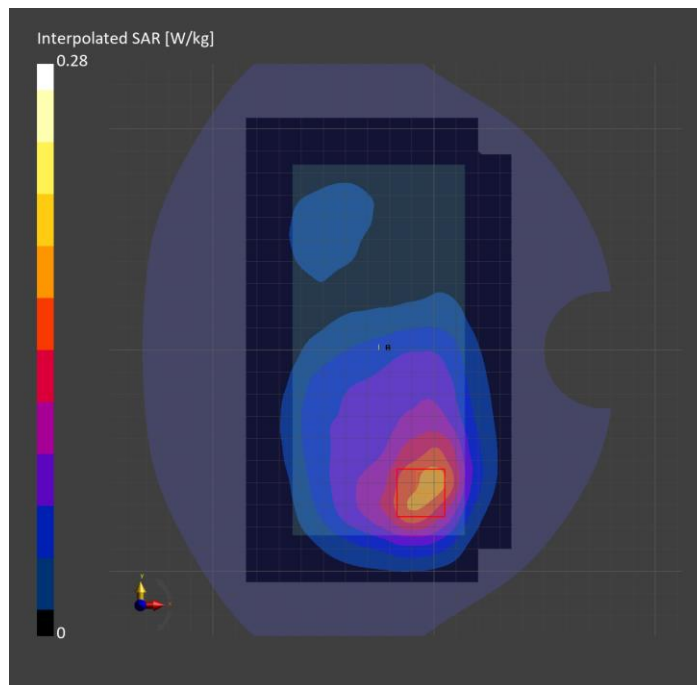
Probe Calibration Date	EX3DV4 - SN7463 2022-05-27	Phantom	Twin-SAM V8.0 (30deg probe tilt)
DAE Calibration Date	DAE4 Sn1257 2022-09-20	TSL Type	HBBL-600-10000

Scan Setup

	Area Scan	Zoom Scan
Grid Extents [mm]	120.0 x 210.0	30.0 x 30.0 x 30.0
Grid Steps [mm]	15.0 x 15.0	6.0 x 6.0 x 1.5
Sensor Surface [mm]	3.0	1.4
Graded Grid	n/a	Yes
M2/M1 [%]		81.4
Dist 3dB Peak [mm]		13.7

Measurement Results

	Area Scan	Zoom Scan
psSAR1g [W/Kg]	0.147	0.153
psSAR10g [W/Kg]	0.089	0.088
Power Drift [dB]	n/a	0.00



Measurement Report for Band 2: UMTS-FDD (WCDMA), CHEEK

Exposure Conditions

Band	Band 2	TSL Permittivity	39.8
Frequency [MHz] Channel Number	1880.0 9400	TSL Conductivity [S/m]	1.38
Group UID	WCDMA 10011-CAC	Phantom Section TSL	LeftHead HSL
Conversion Factor	8.12	Test Distance [mm]	0.00

Hardware Setup

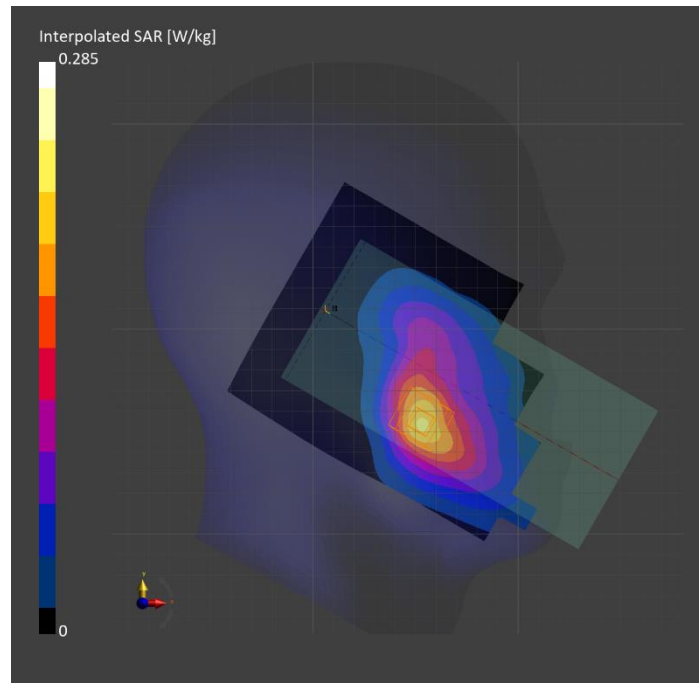
Probe Calibration Date	EX3DV4 - SN7463 2022-05-27	Phantom	Twin-SAM V8.0 (30deg probe tilt)
DAE Calibration Date	DAE4 Sn1257 2022-09-20	TSL Type	HBBL-600-10000

Scan Setup

	Area Scan	Zoom Scan
Grid Extents [mm]	120.0 x 210.0	30.0 x 30.0 x 30.0
Grid Steps [mm]	15.0 x 15.0	6.0 x 6.0 x 1.5
Sensor Surface [mm]	3.0	1.4
Graded Grid	n/a	Yes
M2/M1 [%]		88.0
Dist 3dB Peak [mm]		14.0

Measurement Results

	Area Scan	Zoom Scan
psSAR1g [W/Kg]	0.179	0.188
psSAR10g [W/Kg]	0.105	0.119
Power Drift [dB]	n/a	0.02



Measurement Report for Band 2: UMTS-FDD (WCDMA), BACK

Exposure Conditions

Band	Band 2	TSL Permittivity	39.8
Frequency [MHz] Channel Number	1880.0 9400	TSL Conductivity [S/m]	1.38
Group UID	WCDMA 10011-CAC	Phantom Section TSL	Flat HSL
Conversion Factor	8.12	Test Distance [mm]	15.00

Hardware Setup

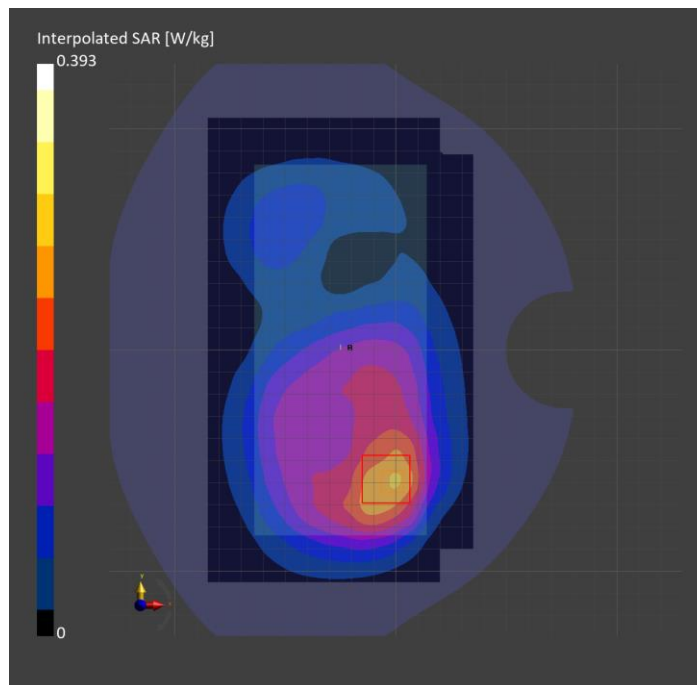
Probe Calibration Date	EX3DV4 - SN7463 2022-05-27	Phantom	Twin-SAM V8.0 (30deg probe tilt)
DAE Calibration Date	DAE4 Sn1257 2022-09-20	TSL Type	HBBL-600-10000

Scan Setup

	Area Scan	Zoom Scan
Grid Extents [mm]	120.0 x 210.0	30.0 x 30.0 x 30.0
Grid Steps [mm]	15.0 x 15.0	6.0 x 6.0 x 1.5
Sensor Surface [mm]	3.0	1.4
Graded Grid	n/a	Yes
M2/M1 [%]		83.5
Dist 3dB Peak [mm]		15.1

Measurement Results

	Area Scan	Zoom Scan
psSAR1g [W/Kg]	0.223	0.230
psSAR10g [W/Kg]	0.136	0.140
Power Drift [dB]	n/a	-0.01



Measurement Report for Band 2: UMTS-FDD (WCDMA), BACK

Exposure Conditions

Band	Band 2	TSL Permittivity	39.8
Frequency [MHz] Channel Number	1880.0 9400	TSL Conductivity [S/m]	1.38
Group UID	WCDMA 10011-CAC	Phantom Section TSL	Flat HSL
Conversion Factor	8.12	Test Distance [mm]	10.00

Hardware Setup

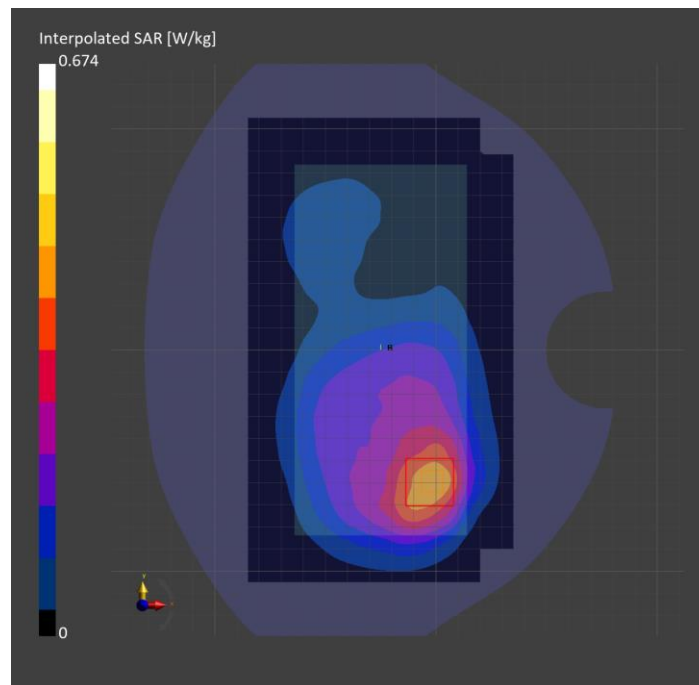
Probe Calibration Date	EX3DV4 - SN7463 2022-05-27	Phantom	Twin-SAM V8.0 (30deg probe tilt)
DAE Calibration Date	DAE4 Sn1257 2022-09-20	TSL Type	HBBL-600-10000

Scan Setup

	Area Scan	Zoom Scan
Grid Extents [mm]	120.0 x 210.0	30.0 x 30.0 x 30.0
Grid Steps [mm]	15.0 x 15.0	6.0 x 6.0 x 1.5
Sensor Surface [mm]	3.0	1.4
Graded Grid	n/a	Yes
M2/M1 [%]		83.4
Dist 3dB Peak [mm]		14.5

Measurement Results

	Area Scan	Zoom Scan
psSAR1g [W/Kg]	0.369	0.382
psSAR10g [W/Kg]	0.222	0.226
Power Drift [dB]	n/a	0.04



Measurement Report for Band 4: UMTS-FDD (WCDMA), CHEEK

Exposure Conditions

Band	Band 4	TSL Permittivity	40.7
Frequency [MHz] Channel Number	1732.6 1413	TSL Conductivity [S/m]	1.30
Group UID	WCDMA 10011-CAC	Phantom Section TSL	LeftHead HSL
Conversion Factor	8.51	Test Distance [mm]	0.00

Hardware Setup

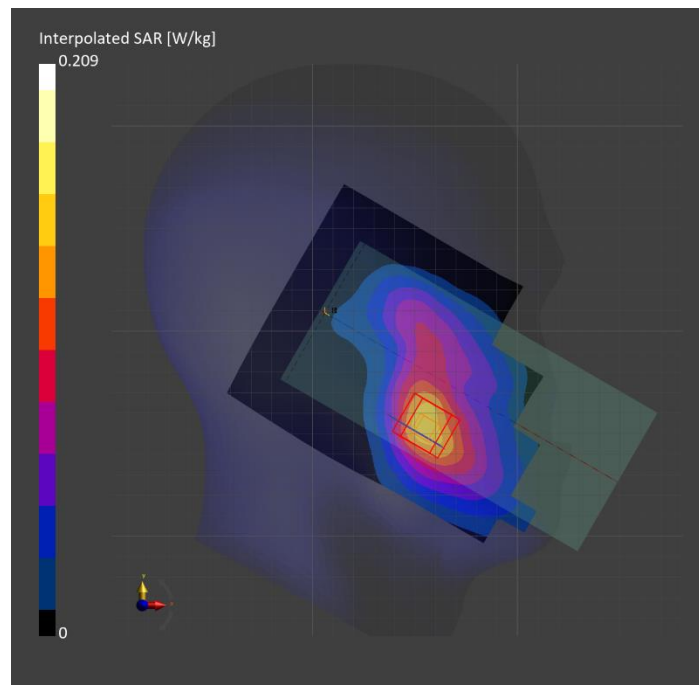
Probe Calibration Date	EX3DV4 - SN7463 2022-05-27	Phantom	Twin-SAM V8.0 (30deg probe tilt)
DAE Calibration Date	DAE4 Sn1257 2022-09-20	TSL Type	HBBL-600-10000

Scan Setup

	Area Scan	Zoom Scan
Grid Extents [mm]	120.0 x 210.0	30.0 x 30.0 x 30.0
Grid Steps [mm]	15.0 x 15.0	6.0 x 6.0 x 1.5
Sensor Surface [mm]	3.0	1.4
Graded Grid	n/a	Yes
M2/M1 [%]		89.4
Dist 3dB Peak [mm]		12.5

Measurement Results

	Area Scan	Zoom Scan
psSAR1g [W/Kg]	0.129	0.139
psSAR10g [W/Kg]	0.078	0.091
Power Drift [dB]	n/a	-0.02



Measurement Report for Band 4: UMTS-FDD (WCDMA), BACK

Exposure Conditions

Band	Band 4	TSL Permittivity	40.7
Frequency [MHz] Channel Number	1732.6 1413	TSL Conductivity [S/m]	1.30
Group UID	WCDMA 10011-CAC	Phantom Section TSL	Flat HSL
Conversion Factor	8.51	Test Distance [mm]	15.00

Hardware Setup

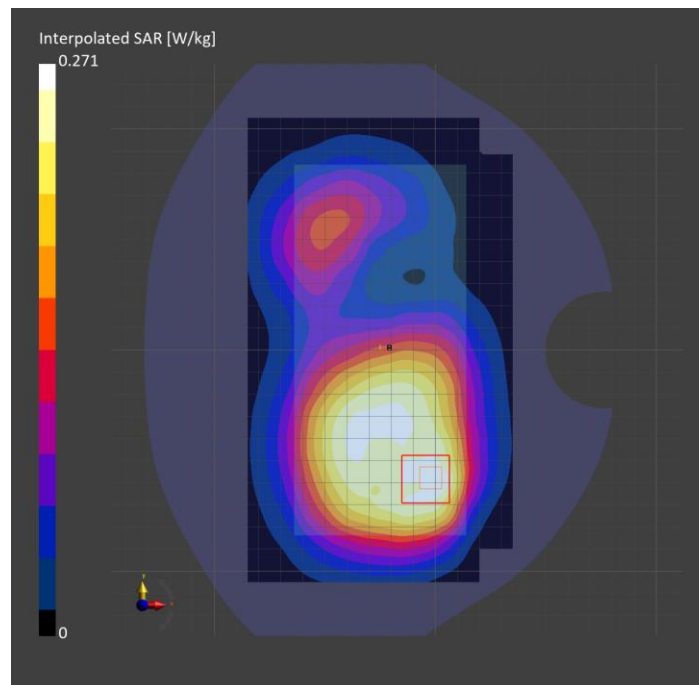
Probe Calibration Date	EX3DV4 - SN7463 2022-05-27	Phantom	Twin-SAM V8.0 (30deg probe tilt)
DAE Calibration Date	DAE4 Sn1257 2022-09-20	TSL Type	HBBL-600-10000

Scan Setup

	Area Scan	Zoom Scan
Grid Extents [mm]	120.0 x 210.0	30.0 x 30.0 x 30.0
Grid Steps [mm]	15.0 x 15.0	6.0 x 6.0 x 1.5
Sensor Surface [mm]	3.0	1.4
Graded Grid	n/a	Yes
M2/M1 [%]		82.8
Dist 3dB Peak [mm]		16.7

Measurement Results

	Area Scan	Zoom Scan
psSAR1g [W/Kg]	0.145	0.158
psSAR10g [W/Kg]	0.092	0.099
Power Drift [dB]	n/a	-0.05



Measurement Report for Band 4: UMTS-FDD (WCDMA), BACK

Exposure Conditions

Band	Band 4	TSL Permittivity	40.7
Frequency [MHz] Channel Number	1732.6 1413	TSL Conductivity [S/m]	1.30
Group UID	WCDMA 10011-CAC	Phantom Section TSL	Flat HSL
Conversion Factor	8.51	Test Distance [mm]	10.00

Hardware Setup

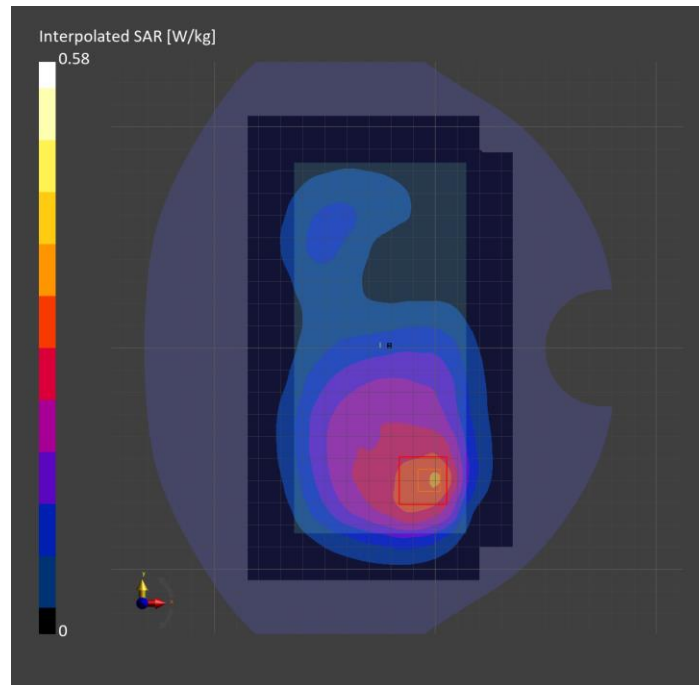
Probe Calibration Date	EX3DV4 - SN7463 2022-05-27	Phantom	Twin-SAM V8.0 (30deg probe tilt)
DAE Calibration Date	DAE4 Sn1257 2022-09-20	TSL Type	HBBL-600-10000

Scan Setup

	Area Scan	Zoom Scan
Grid Extents [mm]	120.0 x 210.0	30.0 x 30.0 x 30.0
Grid Steps [mm]	15.0 x 15.0	6.0 x 6.0 x 1.5
Sensor Surface [mm]	3.0	1.4
Graded Grid	n/a	Yes
M2/M1 [%]		82.3
Dist 3dB Peak [mm]		14.0

Measurement Results

	Area Scan	Zoom Scan
psSAR1g [W/Kg]	0.288	0.323
psSAR10g [W/Kg]	0.179	0.193
Power Drift [dB]	n/a	-0.10



Measurement Report for Band 5: UMTS-FDD (WCDMA), CHEEK

Exposure Conditions

Band	Band 5	TSL Permittivity	42.0
Frequency [MHz] Channel Number	836.6 4183	TSL Conductivity [S/m]	0.906
Group UID	WCDMA 10011-CAC	Phantom Section TSL	RightHead HSL
Conversion Factor	9.32	Test Distance [mm]	0.00

Hardware Setup

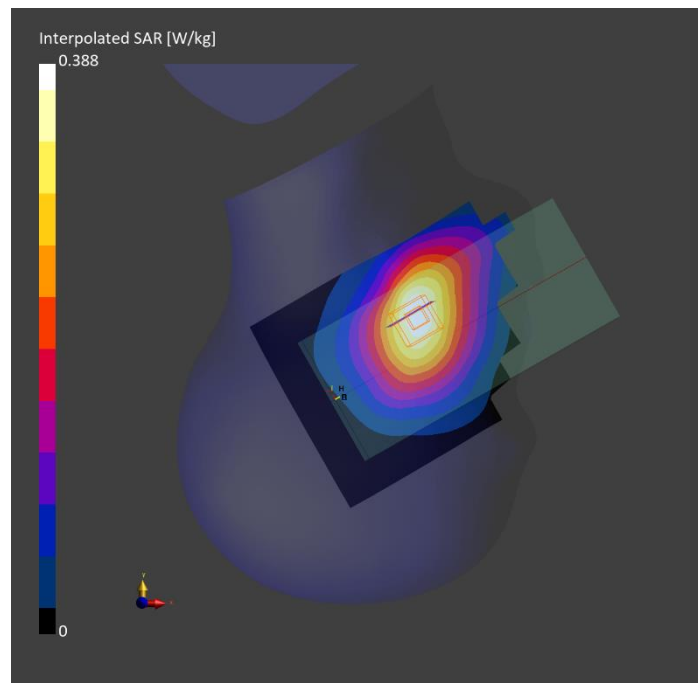
Probe Calibration Date	EX3DV4 - SN7463 2022-05-27	Phantom	Twin-SAM V8.0 (30deg probe tilt)
DAE Calibration Date	DAE4 Sn1257 2022-09-20	TSL Type	HBBL-600-10000

Scans Setup

	Area Scan	Zoom Scan
Grid Extents [mm]	120.0 x 210.0	30.0 x 30.0 x 30.0
Grid Steps [mm]	15.0 x 15.0	6.0 x 6.0 x 1.5
Sensor Surface [mm]	3.0	1.4
Graded Grid	n/a	Yes
M2/M1 [%]		92.2
Dist 3dB Peak [mm]		> 15.0

Measurement Results

	Area Scan	Zoom Scan
psSAR1g [W/Kg]	0.285	0.301
psSAR10g [W/Kg]	0.193	0.229
Power Drift [dB]	n/a	0.00



Measurement Report for Band 5: UMTS-FDD (WCDMA), FRONT

Exposure Conditions

Band	Band 5	TSL Permittivity	42.0
Frequency [MHz] Channel Number	836.6 4183	TSL Conductivity [S/m]	0.906
Group UID	WCDMA 10011-CAC	Phantom Section TSL	Flat HSL
Conversion Factor	9.32	Test Distance [mm]	15.00

Hardware Setup

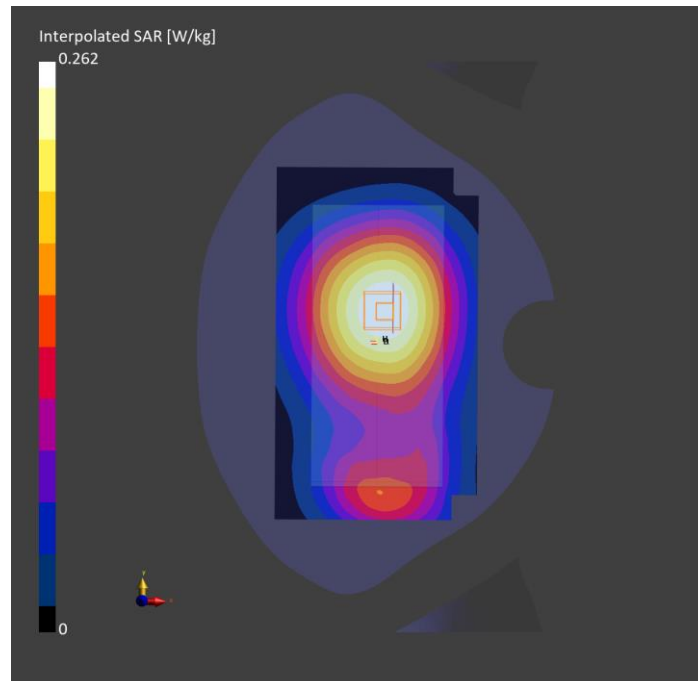
Probe Calibration Date	EX3DV4 - SN7463 2022-05-27	Phantom	Twin-SAM V8.0 (30deg probe tilt)
DAE Calibration Date	DAE4 Sn1257 2022-09-20	TSL Type	HBBL-600-10000

Scans Setup

	Area Scan	Zoom Scan
Grid Extents [mm]	120.0 x 210.0	30.0 x 30.0 x 30.0
Grid Steps [mm]	15.0 x 15.0	6.0 x 6.0 x 1.5
Sensor Surface [mm]	3.0	1.4
Graded Grid	n/a	Yes
M2/M1 [%]		91.7
Dist 3dB Peak [mm]		> 15.0

Measurement Results

	Area Scan	Zoom Scan
psSAR1g [W/Kg]	0.192	0.200
psSAR10g [W/Kg]	0.136	0.154
Power Drift [dB]	n/a	-0.03



Measurement Report for Band 5: UMTS-FDD (WCDMA), FRONT

Exposure Conditions

Band	Band 5	TSL Permittivity	42.0
Frequency [MHz] Channel Number	836.6 4183	TSL Conductivity [S/m]	0.906
Group UID	WCDMA 10011-CAC	Phantom Section TSL	Flat HSL
Conversion Factor	9.32	Test Distance [mm]	10.00

Hardware Setup

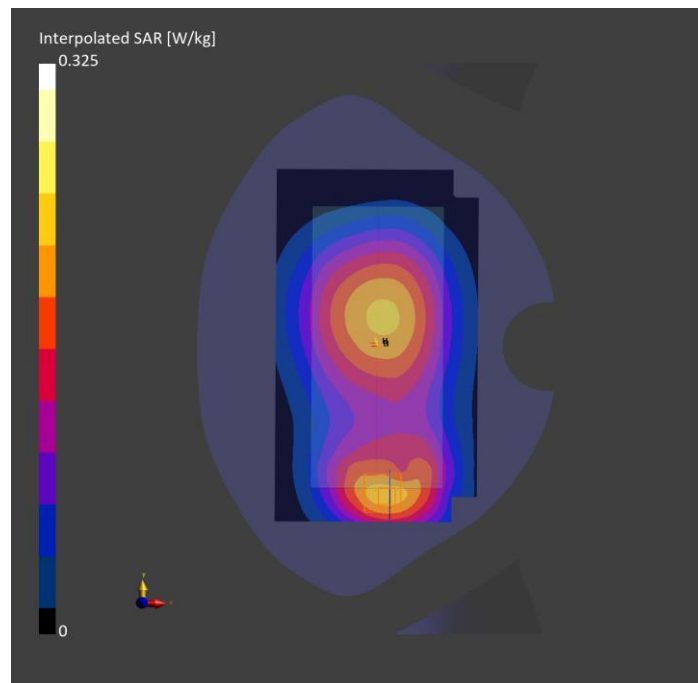
Probe Calibration Date	EX3DV4 - SN7463 2022-05-27	Phantom	Twin-SAM V8.0 (30deg probe tilt)
DAE Calibration Date	DAE4 Sn1257 2022-09-20	TSL Type	HBBL-600-10000

Scans Setup

	Area Scan	Zoom Scan
Grid Extents [mm]	120.0 x 210.0	30.0 x 30.0 x 30.0
Grid Steps [mm]	15.0 x 15.0	6.0 x 6.0 x 1.5
Sensor Surface [mm]	3.0	1.4
Graded Grid	n/a	Yes
M2/M1 [%]		84.8
Dist 3dB Peak [mm]		21.3

Measurement Results

	Area Scan	Zoom Scan
psSAR1g [W/Kg]	0.204	0.201
psSAR10g [W/Kg]	0.140	0.129
Power Drift [dB]	n/a	-0.03



Measurement Report for Band 2: LTE-FDD (SC-FDMA, 1 RB, 20 MHz, QPSK) RBPosition:High AntennaCfg:SISO, CHEEK

Exposure Conditions

Band	Band 2	TSL Permittivity	39.8
Frequency [MHz] Channel Number	1880.0 18900	TSL Conductivity [S/m]	1.38
Group UID	LTE-FDD 10169-CAF	Phantom Section TSL	LeftHead HSL
Conversion Factor	8.12	Test Distance [mm]	0.00

Hardware Setup

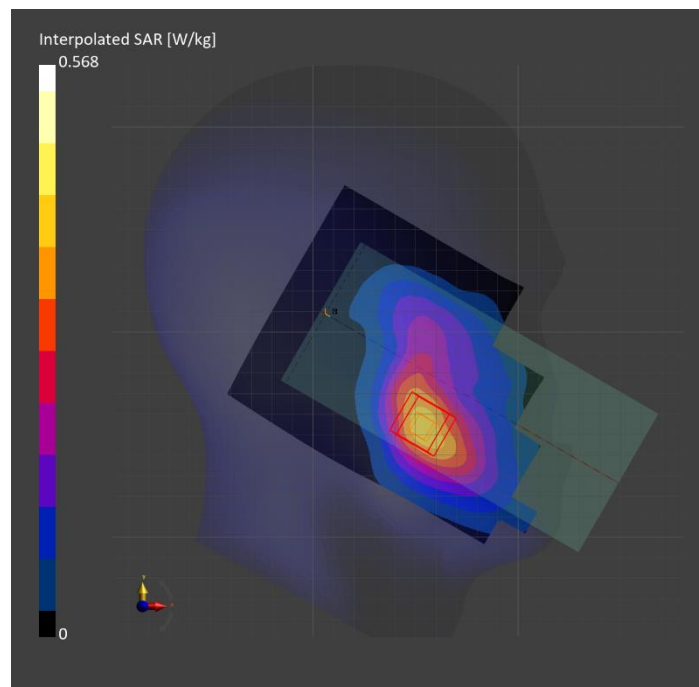
Probe Calibration Date	EX3DV4 - SN7463 2022-05-27	Phantom	Twin-SAM V8.0 (30deg probe tilt)
DAE Calibration Date	DAE4 Sn1257 2022-09-20	TSL Type	HBBL-600-10000

Scan Setup

	Area Scan	Zoom Scan
Grid Extents [mm]	120.0 x 210.0	30.0 x 30.0 x 30.0
Grid Steps [mm]	15.0 x 15.0	6.0 x 6.0 x 1.5
Sensor Surface [mm]	3.0	1.4
Graded Grid	n/a	Yes
M2/M1 [%]		87.6
Dist 3dB Peak [mm]		15.2

Measurement Results

	Area Scan	Zoom Scan
psSAR1g [W/Kg]	0.347	0.367
psSAR10g [W/Kg]	0.206	0.237
Power Drift [dB]	n/a	0.02



Measurement Report for Band 2: LTE-FDD (SC-FDMA, 1 RB, 20 MHz, QPSK) RBPosition:High AntennaCfg:SISO, BACK

Exposure Conditions

Band	Band 2	TSL Permittivity	39.8
Frequency [MHz] Channel Number	1880.0 18900	TSL Conductivity [S/m]	1.38
Group UID	LTE-FDD 10169-CAF	Phantom Section TSL	Flat HSL
Conversion Factor	8.12	Test Distance [mm]	15.00

Hardware Setup

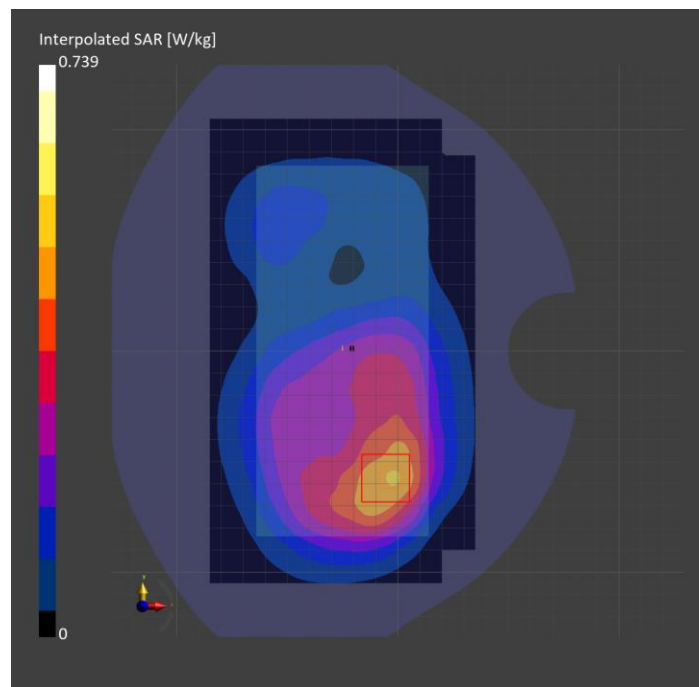
Probe Calibration Date	EX3DV4 - SN7463 2022-05-27	Phantom	Twin-SAM V8.0 (30deg probe tilt)
DAE Calibration Date	DAE4 Sn1257 2022-09-20	TSL Type	HBBL-600-10000

Scan Setup

	Area Scan	Zoom Scan
Grid Extents [mm]	120.0 x 210.0	30.0 x 30.0 x 30.0
Grid Steps [mm]	15.0 x 15.0	6.0 x 6.0 x 1.5
Sensor Surface [mm]	3.0	1.4
Graded Grid	n/a	Yes
M2/M1 [%]		84.1
Dist 3dB Peak [mm]		17.1

Measurement Results

	Area Scan	Zoom Scan
psSAR1g [W/Kg]	0.421	0.436
psSAR10g [W/Kg]	0.260	0.267
Power Drift [dB]	n/a	0.01



Measurement Report for Band 2: LTE-FDD (SC-FDMA, 1 RB, 20 MHz, QPSK) RBPosition:High AntennaCfg:SISO, BACK

Exposure Conditions

Band	Band 2	TSL Permittivity	39.8
Frequency [MHz] Channel Number	1880.0 18900	TSL Conductivity [S/m]	1.38
Group UID	LTE-FDD 10169-CAF	Phantom Section TSL	Flat HSL
Conversion Factor	8.12	Test Distance [mm]	10.00

Hardware Setup

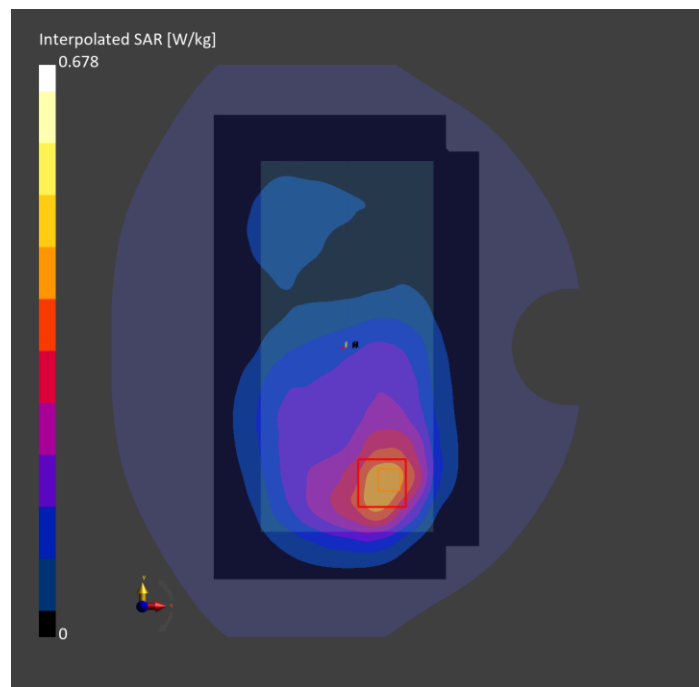
Probe Calibration Date	EX3DV4 - SN7463 2022-05-27	Phantom	Twin-SAM V8.0 (30deg probe tilt)
DAE Calibration Date	DAE4 Sn1257 2022-09-20	TSL Type	HBBL-600-10000

Scan Setup

	Area Scan	Zoom Scan
Grid Extents [mm]	120.0 x 210.0	30.0 x 30.0 x 30.0
Grid Steps [mm]	15.0 x 15.0	6.0 x 6.0 x 1.5
Sensor Surface [mm]	3.0	1.4
Graded Grid	n/a	Yes
M2/M1 [%]		82.6
Dist 3dB Peak [mm]		14.9

Measurement Results

	Area Scan	Zoom Scan
psSAR1g [W/Kg]	0.370	0.383
psSAR10g [W/Kg]	0.223	0.225
Power Drift [dB]	n/a	0.01



Measurement Report for Band 5: LTE-FDD (SC-FDMA, 1 RB, 10 MHz, QPSK) RBPosition:Low AntennaCfg:SISO, CHEEK

Exposure Conditions

Band	Band 5	TSL Permittivity	42.0
Frequency [MHz] Channel Number	836.5 20525	TSL Conductivity [S/m]	0.906
Group UID	LTE-FDD 10175-CAH	Phantom Section TSL	RightHead HSL
Conversion Factor	9.32	Test Distance [mm]	0.00

Hardware Setup

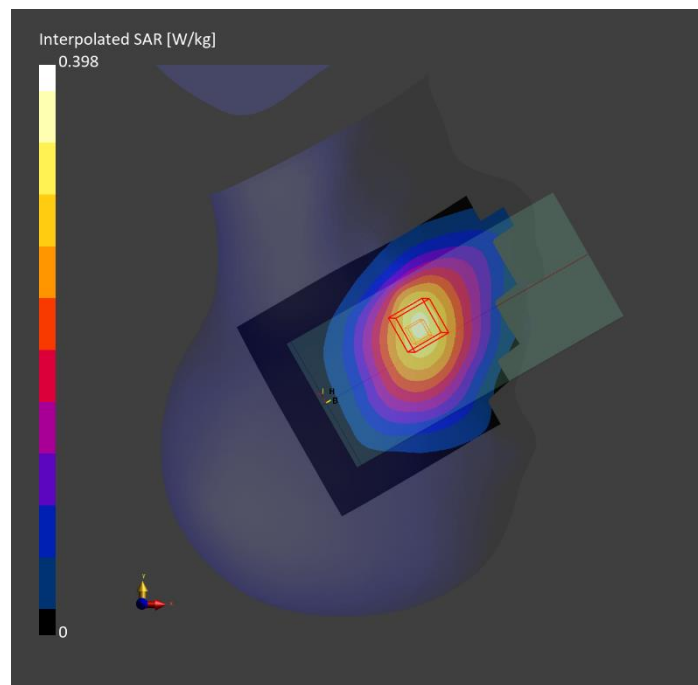
Probe Calibration Date	EX3DV4 - SN7463 2022-05-27	Phantom	Twin-SAM V8.0 (30deg probe tilt)
DAE Calibration Date	DAE4 Sn1257 2022-09-20	TSL Type	HBBL-600-10000

Scan Setup

	Area Scan	Zoom Scan
Grid Extents [mm]	120.0 x 210.0	30.0 x 30.0 x 30.0
Grid Steps [mm]	15.0 x 15.0	6.0 x 6.0 x 1.5
Sensor Surface [mm]	3.0	1.4
Graded Grid	n/a	Yes
M2/M1 [%]		93.7
Dist 3dB Peak [mm]		> 15.0

Measurement Results

	Area Scan	Zoom Scan
psSAR1g [W/Kg]	0.300	0.314
psSAR10g [W/Kg]	0.204	0.237
Power Drift [dB]	n/a	-0.11



Measurement Report for Band 5: LTE-FDD (SC-FDMA, 1 RB, 10 MHz, QPSK) RBPosition:Low AntennaCfg:SISO, FRONT

Exposure Conditions

Band	Band 5	TSL Permittivity	42.0
Frequency [MHz] Channel Number	836.5 20525	TSL Conductivity [S/m]	0.906
Group UID	LTE-FDD 10175-CAH	Phantom Section TSL	Flat HSL
Conversion Factor	9.32	Test Distance [mm]	15.00

Hardware Setup

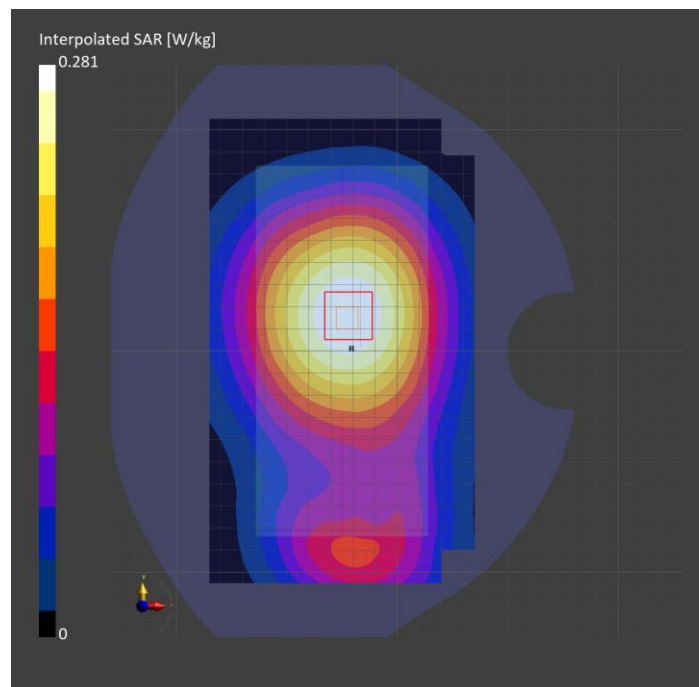
Probe Calibration Date	EX3DV4 - SN7463 2022-05-27	Phantom	Twin-SAM V8.0 (30deg probe tilt)
DAE Calibration Date	DAE4 Sn1257 2022-09-20	TSL Type	HBBL-600-10000

Scan Setup

	Area Scan	Zoom Scan
Grid Extents [mm]	120.0 x 210.0	30.0 x 30.0 x 30.0
Grid Steps [mm]	15.0 x 15.0	6.0 x 6.0 x 1.5
Sensor Surface [mm]	3.0	1.4
Graded Grid	n/a	Yes
M2/M1 [%]		91.3
Dist 3dB Peak [mm]		> 15.0

Measurement Results

	Area Scan	Zoom Scan
psSAR1g [W/Kg]	0.206	0.214
psSAR10g [W/Kg]	0.146	0.165
Power Drift [dB]	n/a	-0.02



Measurement Report for Band 5: LTE-FDD (SC-FDMA, 1 RB, 10 MHz, QPSK) RBPosition:Low AntennaCfg:SISO, FRONT

Exposure Conditions

Band	Band 5	TSL Permittivity	42.0
Frequency [MHz] Channel Number	836.5 20525	TSL Conductivity [S/m]	0.906
Group UID	LTE-FDD 10175-CAH	Phantom Section TSL	Flat HSL
Conversion Factor	9.32	Test Distance [mm]	10.00

Hardware Setup

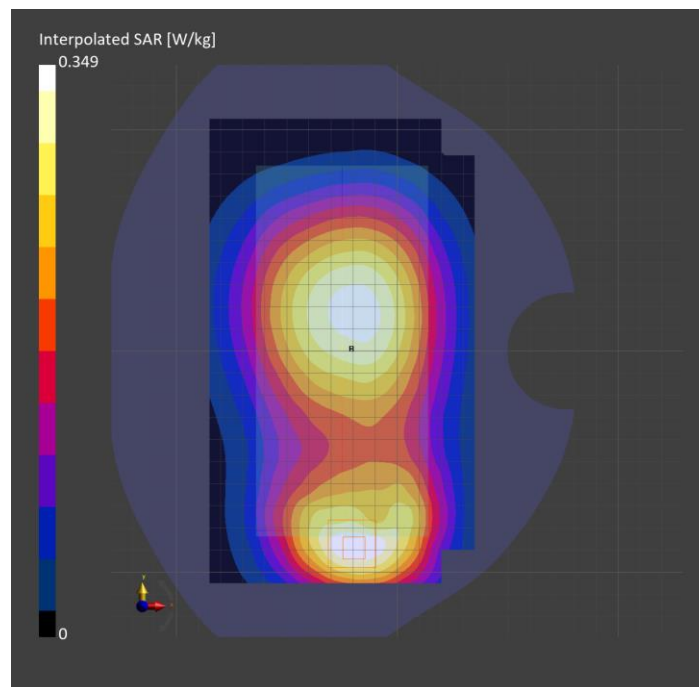
Probe Calibration Date	EX3DV4 - SN7463 2022-05-27	Phantom	Twin-SAM V8.0 (30deg probe tilt)
DAE Calibration Date	DAE4 Sn1257 2022-09-20	TSL Type	HBBL-600-10000

Scan Setup

	Area Scan	Zoom Scan
Grid Extents [mm]	120.0 x 210.0	30.0 x 30.0 x 30.0
Grid Steps [mm]	15.0 x 15.0	6.0 x 6.0 x 1.5
Sensor Surface [mm]	3.0	1.4
Graded Grid	n/a	Yes
M2/M1 [%]		85.7
Dist 3dB Peak [mm]		19.6

Measurement Results

	Area Scan	Zoom Scan
psSAR1g [W/Kg]	0.217	0.214
psSAR10g [W/Kg]	0.151	0.138
Power Drift [dB]	n/a	-0.02



Measurement Report for Band 12: LTE-FDD (SC-FDMA, 1 RB, 10 MHz, QPSK) RBPosition:Mid AntennaCfg:SISO, CHEEK

Exposure Conditions

Band	Band 12	TSL Permittivity	42.5
Frequency [MHz] Channel Number	707.5 23095	TSL Conductivity [S/m]	0.859
Group UID	LTE-FDD 10175-CAH	Phantom Section TSL	RightHead HSL
Conversion Factor	9.76	Test Distance [mm]	0.00

Hardware Setup

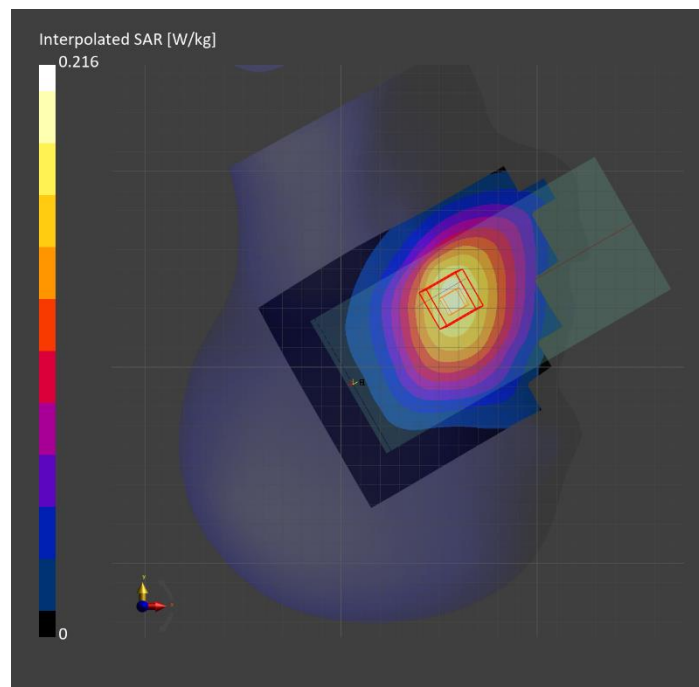
Probe Calibration Date	EX3DV4 - SN7463 2022-05-27	Phantom	Twin-SAM V8.0 (30deg probe tilt)
DAE Calibration Date	DAE4 Sn1257 2022-09-20	TSL Type	HBBL-600-10000

Scan Setup

	Area Scan	Zoom Scan
Grid Extents [mm]	120.0 x 210.0	30.0 x 30.0 x 30.0
Grid Steps [mm]	15.0 x 15.0	6.0 x 6.0 x 1.5
Sensor Surface [mm]	3.0	1.4
Graded Grid	n/a	Yes
M2/M1 [%]		94.6
Dist 3dB Peak [mm]		> 15.0

Measurement Results

	Area Scan	Zoom Scan
psSAR1g [W/Kg]	0.167	0.172
psSAR10g [W/Kg]	0.116	0.133
Power Drift [dB]	n/a	0.01



Measurement Report for Band 12: LTE-FDD (SC-FDMA, 1 RB, 10 MHz, QPSK) RBPosition:Mid AntennaCfg:SISO, BACK

Exposure Conditions

Band	Band 12	TSL Permittivity	42.5
Frequency [MHz] Channel Number	707.5 23095	TSL Conductivity [S/m]	0.859
Group UID	LTE-FDD 10175-CAH	Phantom Section TSL	Flat HSL
Conversion Factor	9.76	Test Distance [mm]	15.00

Hardware Setup

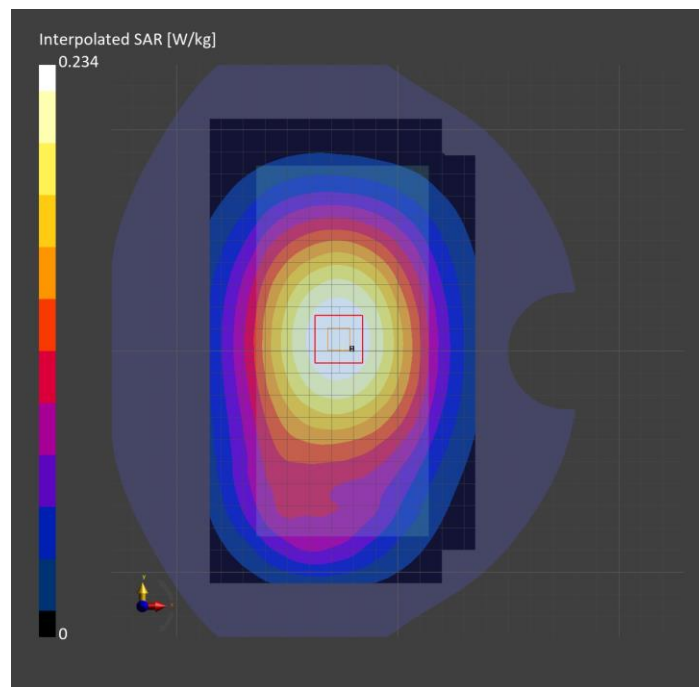
Probe Calibration Date	EX3DV4 - SN7463 2022-05-27	Phantom	Twin-SAM V8.0 (30deg probe tilt)
DAE Calibration Date	DAE4 Sn1257 2022-09-20	TSL Type	HBBL-600-10000

Scan Setup

	Area Scan	Zoom Scan
Grid Extents [mm]	120.0 x 210.0	30.0 x 30.0 x 30.0
Grid Steps [mm]	15.0 x 15.0	6.0 x 6.0 x 1.5
Sensor Surface [mm]	3.0	1.4
Graded Grid	n/a	Yes
M2/M1 [%]		92.3
Dist 3dB Peak [mm]		> 15.0

Measurement Results

	Area Scan	Zoom Scan
psSAR1g [W/Kg]	0.176	0.182
psSAR10g [W/Kg]	0.126	0.142
Power Drift [dB]	n/a	-0.03



Measurement Report for Band 12: LTE-FDD (SC-FDMA, 1 RB, 10 MHz, QPSK) RBPosition:Mid AntennaCfg:SISO, EDGE RIGHT

Exposure Conditions

Band	Band 12	TSL Permittivity	42.5
Frequency [MHz] Channel Number	707.5 23095	TSL Conductivity [S/m]	0.859
Group UID	LTE-FDD 10175-CAH	Phantom Section TSL	Flat HSL
Conversion Factor	9.76	Test Distance [mm]	10.00

Hardware Setup

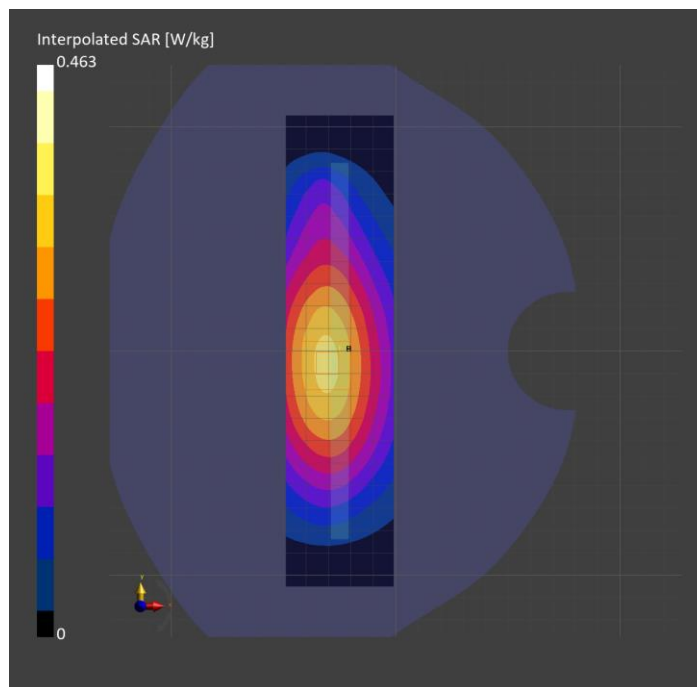
Probe Calibration Date	EX3DV4 - SN7463 2022-05-27	Phantom	Twin-SAM V8.0 (30deg probe tilt)
DAE Calibration Date	DAE4 Sn1257 2022-09-20	TSL Type	HBBL-600-10000

Scan Setup

	Area Scan	Zoom Scan
Grid Extents [mm]	48.0 x 210.0	30.0 x 30.0 x 30.0
Grid Steps [mm]	8.0 x 15.0	6.0 x 6.0 x 1.5
Sensor Surface [mm]	3.0	1.4
Graded Grid	n/a	Yes
M2/M1 [%]		89.2
Dist 3dB Peak [mm]		> 15.0

Measurement Results

	Area Scan	Zoom Scan
psSAR1g [W/Kg]	0.318	0.326
psSAR10g [W/Kg]	0.221	0.232
Power Drift [dB]	n/a	-0.04



Measurement Report for Band 13: LTE-FDD (SC-FDMA, 1 RB, 10 MHz, QPSK) RBPosition:Mid AntennaCfg:SISO, CHEEK

Exposure Conditions

Band	Band 13	TSL Permittivity	42.4
Frequency [MHz] Channel Number	782.0 23230	TSL Conductivity [S/m]	0.886
Group UID	LTE-FDD 10175-CAH	Phantom Section TSL	RightHead HSL
Conversion Factor	9.76	Test Distance [mm]	0.00

Hardware Setup

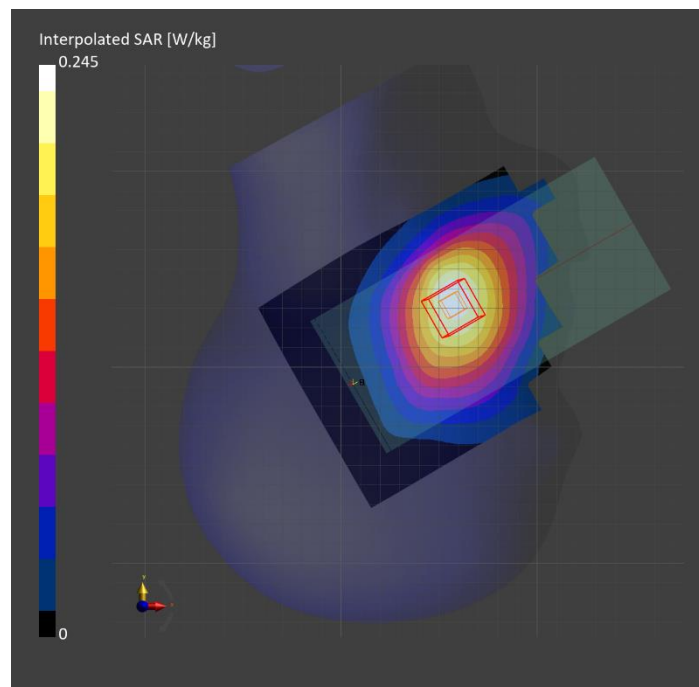
Probe Calibration Date	EX3DV4 - SN7463 2022-05-27	Phantom	Twin-SAM V8.0 (30deg probe tilt)
DAE Calibration Date	DAE4 Sn1257 2022-09-20	TSL Type	HBBL-600-10000

Scan Setup

	Area Scan	Zoom Scan
Grid Extents [mm]	120.0 x 210.0	30.0 x 30.0 x 30.0
Grid Steps [mm]	15.0 x 15.0	6.0 x 6.0 x 1.5
Sensor Surface [mm]	3.0	1.4
Graded Grid	n/a	Yes
M2/M1 [%]		93.8
Dist 3dB Peak [mm]		> 15.0

Measurement Results

	Area Scan	Zoom Scan
psSAR1g [W/Kg]	0.187	0.193
psSAR10g [W/Kg]	0.127	0.148
Power Drift [dB]	n/a	-0.00



Measurement Report for Band 13: LTE-FDD (SC-FDMA, 1 RB, 10 MHz, QPSK) RBPosition:Mid AntennaCfg:SISO, BACK

Exposure Conditions

Band	Band 13	TSL Permittivity	42.4
Frequency [MHz] Channel Number	782.0 23230	TSL Conductivity [S/m]	0.886
Group UID	LTE-FDD 10175-CAH	Phantom Section TSL	Flat HSL
Conversion Factor	9.76	Test Distance [mm]	15.00

Hardware Setup

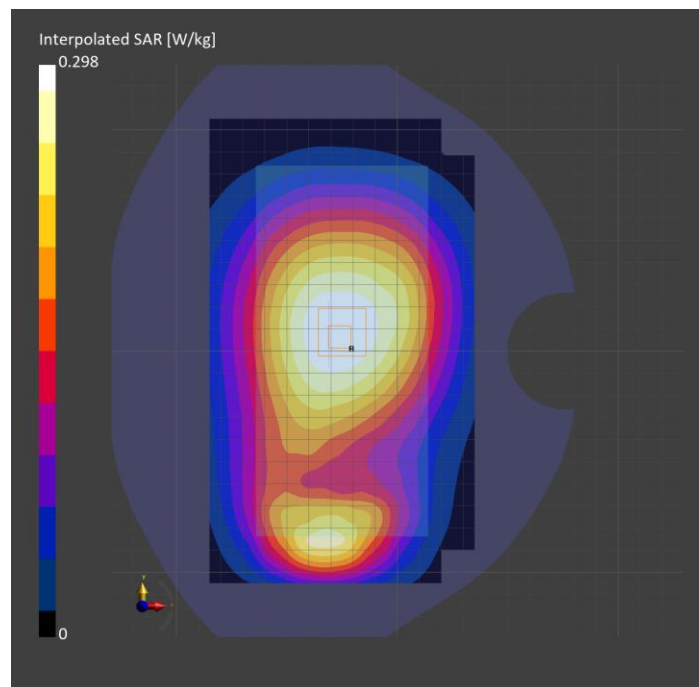
Probe Calibration Date	EX3DV4 - SN7463 2022-05-27	Phantom	Twin-SAM V8.0 (30deg probe tilt)
DAE Calibration Date	DAE4 Sn1257 2022-09-20	TSL Type	HBBL-600-10000

Scan Setup

	Area Scan	Zoom Scan
Grid Extents [mm]	120.0 x 210.0	30.0 x 30.0 x 30.0
Grid Steps [mm]	15.0 x 15.0	6.0 x 6.0 x 1.5
Sensor Surface [mm]	3.0	1.4
Graded Grid	n/a	Yes
M2/M1 [%]		91.4
Dist 3dB Peak [mm]		> 15.0

Measurement Results

	Area Scan	Zoom Scan
psSAR1g [W/Kg]	0.217	0.228
psSAR10g [W/Kg]	0.155	0.176
Power Drift [dB]	n/a	-0.05



Measurement Report for Band 13: LTE-FDD (SC-FDMA, 1 RB, 10 MHz, QPSK) RBPosition:Mid AntennaCfg:SISO, BACK

Exposure Conditions

Band	Band 13	TSL Permittivity	42.4
Frequency [MHz] Channel Number	782.0 23230	TSL Conductivity [S/m]	0.886
Group UID	LTE-FDD 10175-CAH	Phantom Section TSL	Flat HSL
Conversion Factor	9.76	Test Distance [mm]	10.00

Hardware Setup

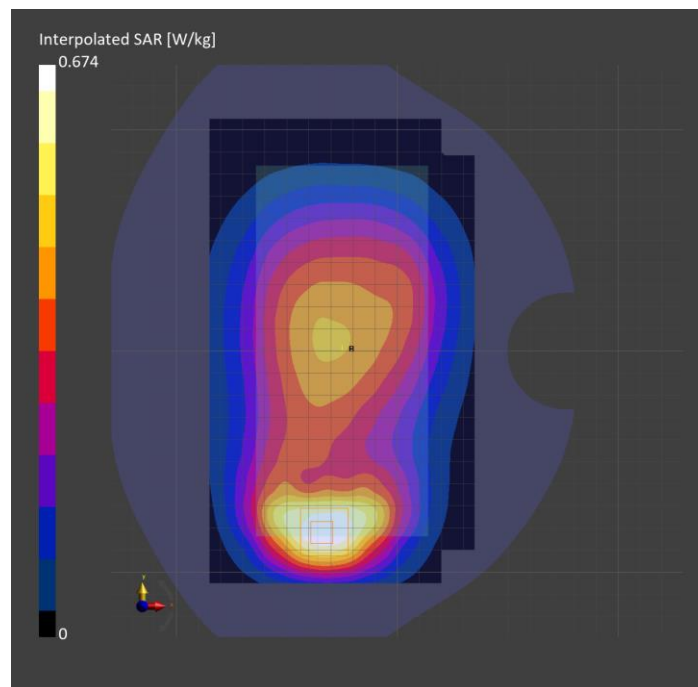
Probe Calibration Date	EX3DV4 - SN7463 2022-05-27	Phantom	Twin-SAM V8.0 (30deg probe tilt)
DAE Calibration Date	DAE4 Sn1257 2022-09-20	TSL Type	HBBL-600-10000

Scan Setup

	Area Scan	Zoom Scan
Grid Extents [mm]	120.0 x 210.0	30.0 x 30.0 x 30.0
Grid Steps [mm]	15.0 x 15.0	6.0 x 6.0 x 1.5
Sensor Surface [mm]	3.0	1.4
Graded Grid	n/a	Yes
M2/M1 [%]		83.5
Dist 3dB Peak [mm]		13.0

Measurement Results

	Area Scan	Zoom Scan
psSAR1g [W/Kg]	0.343	0.377
psSAR10g [W/Kg]	0.232	0.220
Power Drift [dB]	n/a	-0.00



Measurement Report for Band 26: LTE-FDD (SC-FDMA, 1 RB, 15 MHz, QPSK) RBPosition:Mid AntennaCfg:SISO, CHEEK

Exposure Conditions

Band	Band 26	TSL Permittivity	42.0
Frequency [MHz] Channel Number	831.5 26865	TSL Conductivity [S/m]	0.904
Group UID	LTE-FDD 10181-CAF	Phantom Section TSL	RightHead HSL
Conversion Factor	9.32	Test Distance [mm]	0.00

Hardware Setup

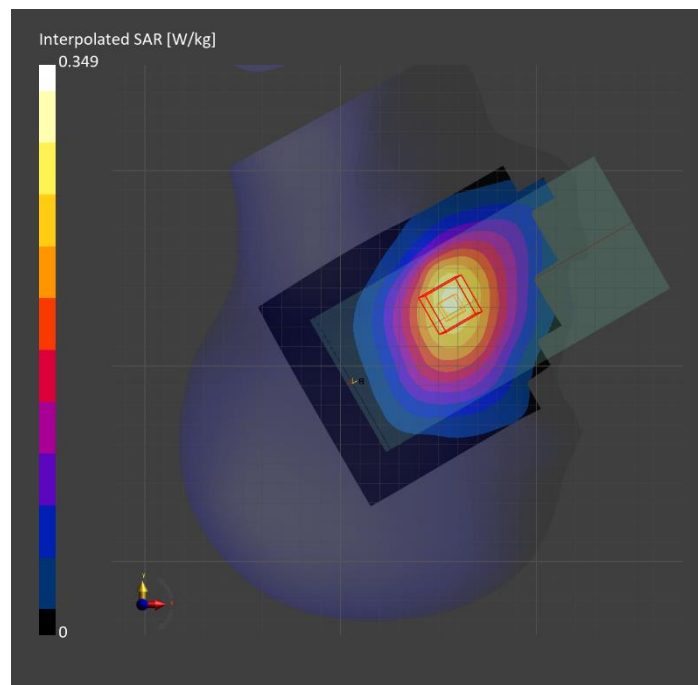
Probe Calibration Date	EX3DV4 - SN7463 2022-05-27	Phantom	Twin-SAM V8.0 (30deg probe tilt)
DAE Calibration Date	DAE4 Sn1257 2022-09-20	TSL Type	HBBL-600-10000

Scan Setup

	Area Scan	Zoom Scan
Grid Extents [mm]	120.0 x 210.0	30.0 x 30.0 x 30.0
Grid Steps [mm]	15.0 x 15.0	6.0 x 6.0 x 1.5
Sensor Surface [mm]	3.0	1.4
Graded Grid	n/a	Yes
M2/M1 [%]		92.7
Dist 3dB Peak [mm]		> 15.0

Measurement Results

	Area Scan	Zoom Scan
psSAR1g [W/Kg]	0.263	0.274
psSAR10g [W/Kg]	0.179	0.208
Power Drift [dB]	n/a	0.06



Measurement Report for Band 26: LTE-FDD (SC-FDMA, 1 RB, 15 MHz, QPSK) RBPosition:Mid AntennaCfg:SISO, FRONT

Exposure Conditions

Band	Band 26	TSL Permittivity	42.0
Frequency [MHz] Channel Number	831.5 26865	TSL Conductivity [S/m]	0.904
Group UID	LTE-FDD 10181-CAF	Phantom Section TSL	Flat HSL
Conversion Factor	9.32	Test Distance [mm]	15.00

Hardware Setup

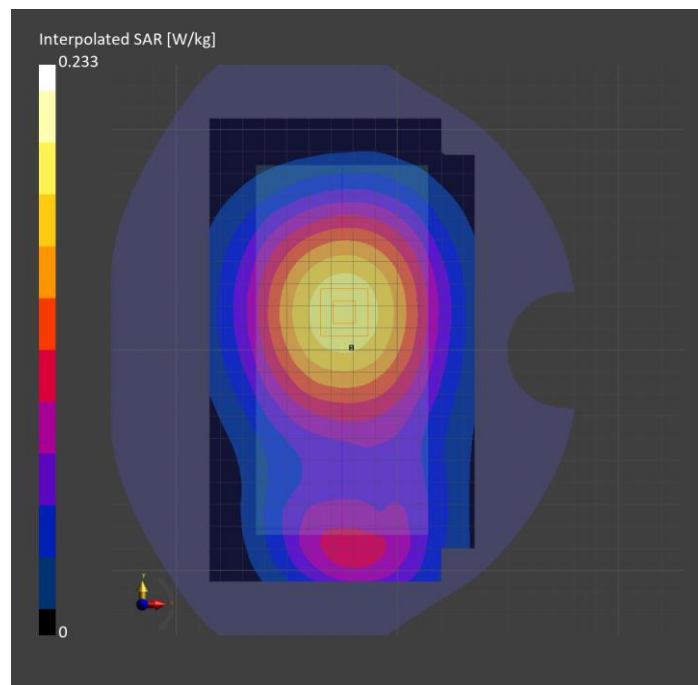
Probe Calibration Date	EX3DV4 - SN7463 2022-05-27	Phantom	Twin-SAM V8.0 (30deg probe tilt)
DAE Calibration Date	DAE4 Sn1257 2022-09-20	TSL Type	HBBL-600-10000

Scan Setup

	Area Scan	Zoom Scan
Grid Extents [mm]	120.0 x 210.0	30.0 x 30.0 x 30.0
Grid Steps [mm]	15.0 x 15.0	6.0 x 6.0 x 1.5
Sensor Surface [mm]	3.0	1.4
Graded Grid	n/a	Yes
M2/M1 [%]		91.9
Dist 3dB Peak [mm]		> 15.0

Measurement Results

	Area Scan	Zoom Scan
psSAR1g [W/Kg]	0.170	0.179
psSAR10g [W/Kg]	0.120	0.137
Power Drift [dB]	n/a	-0.04



Measurement Report for Band 26: LTE-FDD (SC-FDMA, 1 RB, 15 MHz, QPSK) RBPosition:Mid AntennaCfg:SISO, EDGE RIGHT

Exposure Conditions

Band	Band 26	TSL Permittivity	42.0
Frequency [MHz] Channel Number	831.5 26865	TSL Conductivity [S/m]	0.904
Group UID	LTE-FDD 10181-CAF	Phantom Section TSL	Flat HSL
Conversion Factor	9.32	Test Distance [mm]	10.00

Hardware Setup

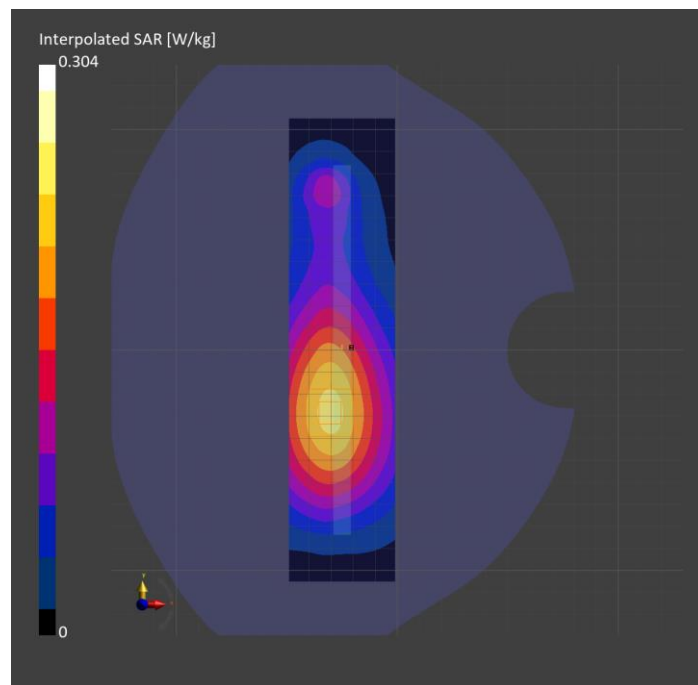
Probe Calibration Date	EX3DV4 - SN7463 2022-05-27	Phantom	Twin-SAM V8.0 (30deg probe tilt)
DAE Calibration Date	DAE4 Sn1257 2022-09-20	TSL Type	HBBL-600-10000

Scan Setup

	Area Scan	Zoom Scan
Grid Extents [mm]	48.0 x 210.0	30.0 x 30.0 x 30.0
Grid Steps [mm]	8.0 x 15.0	6.0 x 6.0 x 1.5
Sensor Surface [mm]	3.0	1.4
Graded Grid	n/a	Yes
M2/M1 [%]		89.8
Dist 3dB Peak [mm]		> 15.0

Measurement Results

	Area Scan	Zoom Scan
psSAR1g [W/Kg]	0.209	0.215
psSAR10g [W/Kg]	0.143	0.151
Power Drift [dB]	n/a	-0.03



Measurement Report for Band 41: LTE-TDD (SC-FDMA, 1 RB, 20 MHz, QPSK, UL Subframe=2,3,4,7,8,9) RBPosition:Low AntennaCfg:SISO, CHEEK

Exposure Conditions

Band	Band 41	TSL Permittivity	40.3
Frequency [MHz] Channel Number	2593.0 40620	TSL Conductivity [S/m]	1.94
Group UID	LTE-TDD 10435-AAG	Phantom Section TSL	LeftHead HSL
Conversion Factor	7.55	Test Distance [mm]	0.00

Hardware Setup

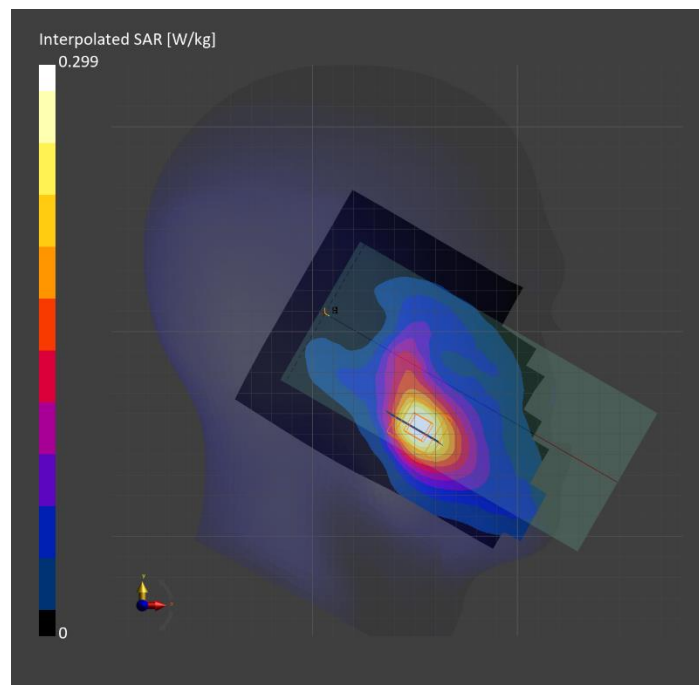
Probe Calibration Date	EX3DV4 - SN3991 2022-09-22	Phantom	Twin-SAM V5.0 (30deg probe tilt)
DAE Calibration Date	DAE4 Sn1377 2022-09-15	TSL Type	HBBL-600-10000

Scan Setup

	Area Scan	Zoom Scan
Grid Extents [mm]	120.0 x 200.0	30.0 x 30.0 x 30.0
Grid Steps [mm]	10.0 x 10.0	5.0 x 5.0 x 1.5
Sensor Surface [mm]	3.0	1.4
Graded Grid	n/a	Yes
M2/M1 [%]		85.9
Dist 3dB Peak [mm]		13.3

Measurement Results

	Area Scan	Zoom Scan
psSAR1g [W/Kg]	0.171	0.178
psSAR10g [W/Kg]	0.089	0.097
Power Drift [dB]	n/a	0.02



Measurement Report for Band 41: LTE-TDD (SC-FDMA, 1 RB, 20 MHz, QPSK, UL Subframe=2,3,4,7,8,9) RBPosition:Low AntennaCfg:SISO, BACK

Exposure Conditions

Band	Band 41	TSL Permittivity	40.3
Frequency [MHz] Channel Number	2593.0 40620	TSL Conductivity [S/m]	1.94
Group UID	LTE-TDD 10435-AAG	Phantom Section TSL	Flat HSL
Conversion Factor	7.55	Test Distance [mm]	15.00

Hardware Setup

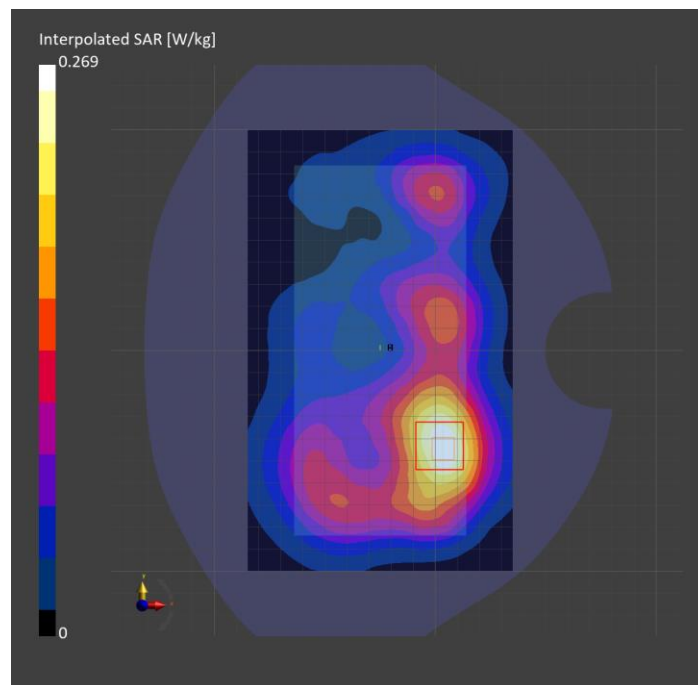
Probe Calibration Date	EX3DV4 - SN3991 2022-09-22	Phantom	Twin-SAM V5.0 (30deg probe tilt)
DAE Calibration Date	DAE4 Sn1377 2022-09-15	TSL Type	HBBL-600-10000

Scan Setup

	Area Scan	Zoom Scan
Grid Extents [mm]	120.0 x 200.0	30.0 x 30.0 x 30.0
Grid Steps [mm]	10.0 x 10.0	5.0 x 5.0 x 1.5
Sensor Surface [mm]	3.0	1.4
Graded Grid	n/a	Yes
M2/M1 [%]		81.5
Dist 3dB Peak [mm]		22.0

Measurement Results

	Area Scan	Zoom Scan
psSAR1g [W/Kg]	0.146	0.148
psSAR10g [W/Kg]	0.080	0.082
Power Drift [dB]	n/a	-0.05



Measurement Report for Band 41: LTE-TDD (SC-FDMA, 1 RB, 20 MHz, QPSK, UL Subframe=2,3,4,7,8,9) RBPosition:Low AntennaCfg:SISO, BACK

Exposure Conditions

Band	Band 41	TSL Permittivity	40.3
Frequency [MHz] Channel Number	2593.0 40620	TSL Conductivity [S/m]	1.94
Group UID	LTE-TDD 10435-AAG	Phantom Section TSL	Flat HSL
Conversion Factor	7.55	Test Distance [mm]	10.00

Hardware Setup

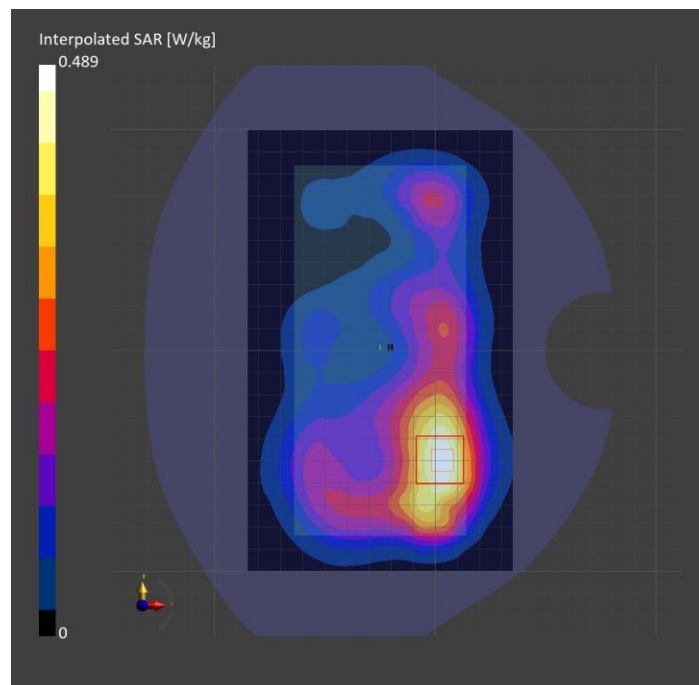
Probe Calibration Date	EX3DV4 - SN3991 2022-09-22	Phantom	Twin-SAM V5.0 (30deg probe tilt)
DAE Calibration Date	DAE4 Sn1377 2022-09-15	TSL Type	HBBL-600-10000

Scan Setup

	Area Scan	Zoom Scan
Grid Extents [mm]	120.0 x 200.0	30.0 x 30.0 x 30.0
Grid Steps [mm]	10.0 x 10.0	5.0 x 5.0 x 1.5
Sensor Surface [mm]	3.0	1.4
Graded Grid	n/a	Yes
M2/M1 [%]		81.2
Dist 3dB Peak [mm]		15.0

Measurement Results

	Area Scan	Zoom Scan
psSAR1g [W/Kg]	0.257	0.261
psSAR10g [W/Kg]	0.140	0.142
Power Drift [dB]	n/a	-0.02



Measurement Report for Band 66: LTE-FDD (SC-FDMA, 1 RB, 20 MHz, QPSK) RBPosition:High AntennaCfg:SISO, CHEEK

Exposure Conditions

Band	Band 66	TSL Permittivity	40.7
Frequency [MHz] Channel Number	1745.0 132322	TSL Conductivity [S/m]	1.31
Group UID	LTE-FDD 10169-CAF	Phantom Section TSL	LeftHead HSL
Conversion Factor	8.51	Test Distance [mm]	0.00

Hardware Setup

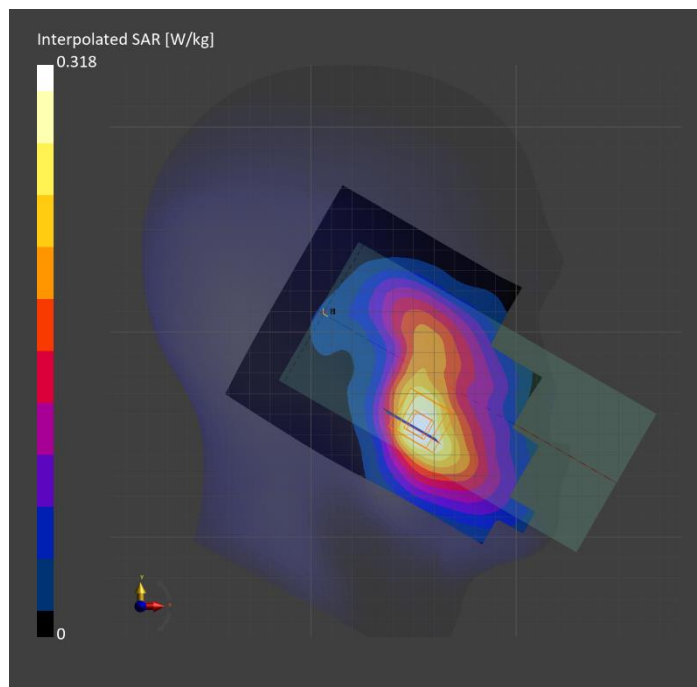
Probe Calibration Date	EX3DV4 - SN7463 2022-05-27	Phantom	Twin-SAM V8.0 (30deg probe tilt)
DAE Calibration Date	DAE4 Sn1257 2022-09-20	TSL Type	HBBL-600-10000

Scan Setup

	Area Scan	Zoom Scan
Grid Extents [mm]	120.0 x 210.0	30.0 x 30.0 x 30.0
Grid Steps [mm]	15.0 x 15.0	6.0 x 6.0 x 1.5
Sensor Surface [mm]	3.0	1.4
Graded Grid	n/a	Yes
M2/M1 [%]		89.1
Dist 3dB Peak [mm]		13.9

Measurement Results

	Area Scan	Zoom Scan
psSAR1g [W/Kg]	0.205	0.217
psSAR10g [W/Kg]	0.123	0.142
Power Drift [dB]	n/a	-0.03



Measurement Report for Band 66: LTE-FDD (SC-FDMA, 1 RB, 20 MHz, QPSK) RBPosition:High AntennaCfg:SISO, FRONT

Exposure Conditions

Band	Band 66	TSL Permittivity	40.7
Frequency [MHz] Channel Number	1745.0 132322	TSL Conductivity [S/m]	1.31
Group UID	LTE-FDD 10169-CAF	Phantom Section TSL	Flat HSL
Conversion Factor	8.51	Test Distance [mm]	15.00

Hardware Setup

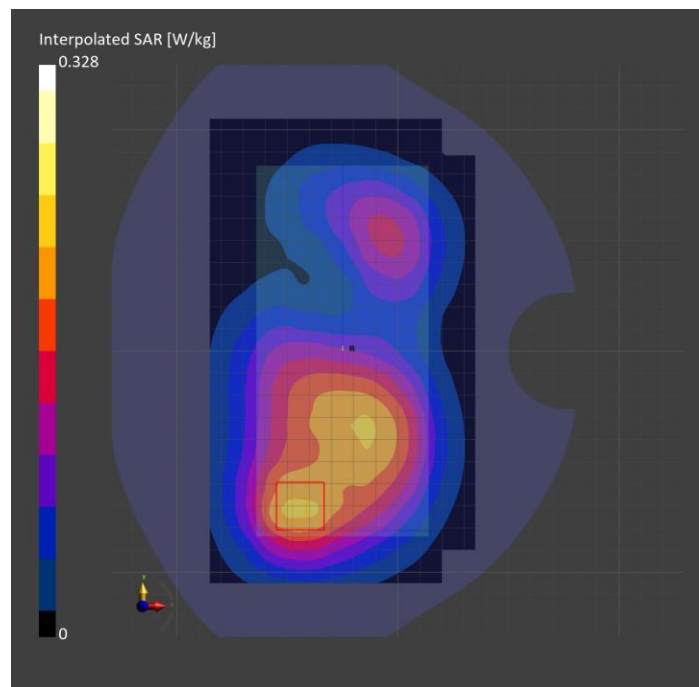
Probe Calibration Date	EX3DV4 - SN7463 2022-05-27	Phantom	Twin-SAM V8.0 (30deg probe tilt)
DAE Calibration Date	DAE4 Sn1257 2022-09-20	TSL Type	HBBL-600-10000

Scan Setup

	Area Scan	Zoom Scan
Grid Extents [mm]	120.0 x 210.0	30.0 x 30.0 x 30.0
Grid Steps [mm]	15.0 x 15.0	6.0 x 6.0 x 1.5
Sensor Surface [mm]	3.0	1.4
Graded Grid	n/a	Yes
M2/M1 [%]		82.8
Dist 3dB Peak [mm]		19.6

Measurement Results

	Area Scan	Zoom Scan
psSAR1g [W/Kg]	0.192	0.197
psSAR10g [W/Kg]	0.122	0.124
Power Drift [dB]	n/a	-0.01



Measurement Report for Band 66: LTE-FDD (SC-FDMA, 50% RB, 20 MHz, QPSK) RBPosition:High AntennaCfg:SISO, BACK

Exposure Conditions

Band	Band 66	TSL Permittivity	40.7
Frequency [MHz] Channel Number	1745.0 132322	TSL Conductivity [S/m]	1.31
Group UID	LTE-FDD 10297-AAE	Phantom Section TSL	Flat HSL
Conversion Factor	8.51	Test Distance [mm]	10.00

Hardware Setup

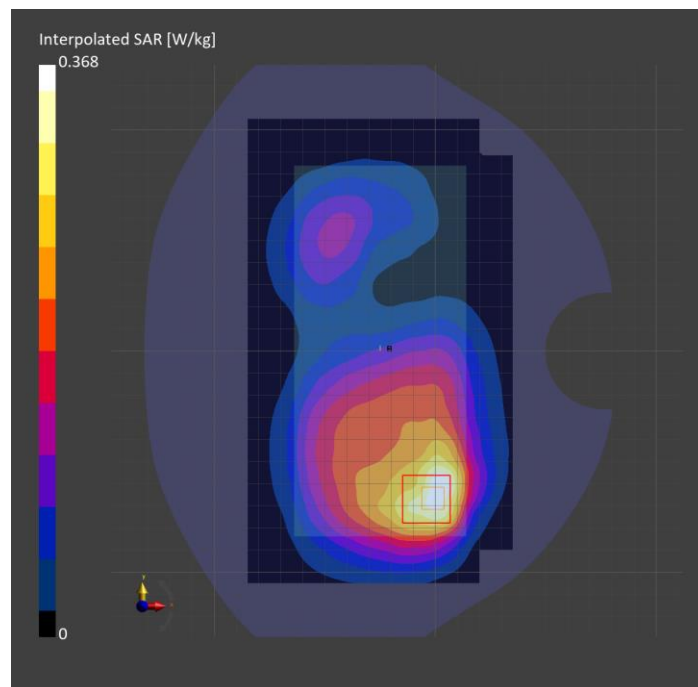
Probe Calibration Date	EX3DV4 - SN7463 2022-05-27	Phantom	Twin-SAM V8.0 (30deg probe tilt)
DAE Calibration Date	DAE4 Sn1257 2022-09-20	TSL Type	HBBL-600-10000

Scan Setup

	Area Scan	Zoom Scan
Grid Extents [mm]	120.0 x 210.0	30.0 x 30.0 x 30.0
Grid Steps [mm]	15.0 x 15.0	6.0 x 6.0 x 1.5
Sensor Surface [mm]	3.0	1.4
Graded Grid	n/a	Yes
M2/M1 [%]		80.9
Dist 3dB Peak [mm]		13.5

Measurement Results

	Area Scan	Zoom Scan
psSAR1g [W/Kg]	0.198	0.193
psSAR10g [W/Kg]	0.118	0.113
Power Drift [dB]	n/a	0.01



Measurement Report for WLAN 2.4GHz: IEEE 802.11b WiFi 2.4 GHz (DSSS, 1 Mbps, 99pc duty cycle), CHEEK

Exposure Conditions

Band	WLAN 2.4GHz	TSL Permittivity	40.6
Frequency [MHz] Channel Number	2437.0 6	TSL Conductivity [S/m]	1.81
Group UID	WLAN 10415-AAA	Phantom Section TSL	RightHead HSL
Conversion Factor	7.74	Test Distance [mm]	0.00

Hardware Setup

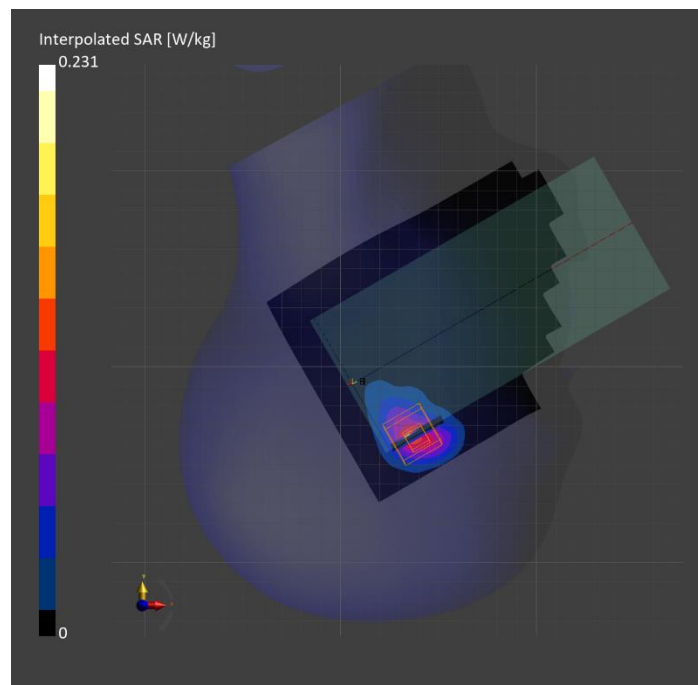
Probe Calibration Date	EX3DV4 - SN3991 2022-09-22	Phantom	Twin-SAM V5.0 (30deg probe tilt)
DAE Calibration Date	DAE4 Sn1377 2022-09-15	TSL Type	HBBL-600-10000

Scan Setup

	Area Scan	Zoom Scan
Grid Extents [mm]	120.0 x 200.0	30.0 x 30.0 x 30.0
Grid Steps [mm]	10.0 x 10.0	5.0 x 5.0 x 1.5
Sensor Surface [mm]	3.0	1.4
Graded Grid	n/a	Yes
M2/M1 [%]		76.8
Dist 3dB Peak [mm]		8.7

Measurement Results

	Area Scan	Zoom Scan
psSAR1g [W/Kg]	0.041	0.045
psSAR10g [W/Kg]	0.020	0.020
Power Drift [dB]	n/a	0.03



Measurement Report for WLAN 2.4GHz: IEEE 802.11b WiFi 2.4 GHz (DSSS, 1 Mbps, 99pc duty cycle), BACK

Exposure Conditions

Band	WLAN 2.4GHz	TSL Permittivity	40.7
Frequency [MHz] Channel Number	2412.0 1	TSL Conductivity [S/m]	1.78
Group UID	WLAN 10415-AAA	Phantom Section TSL	Flat HSL
Conversion Factor	7.74	Test Distance [mm]	15.00

Hardware Setup

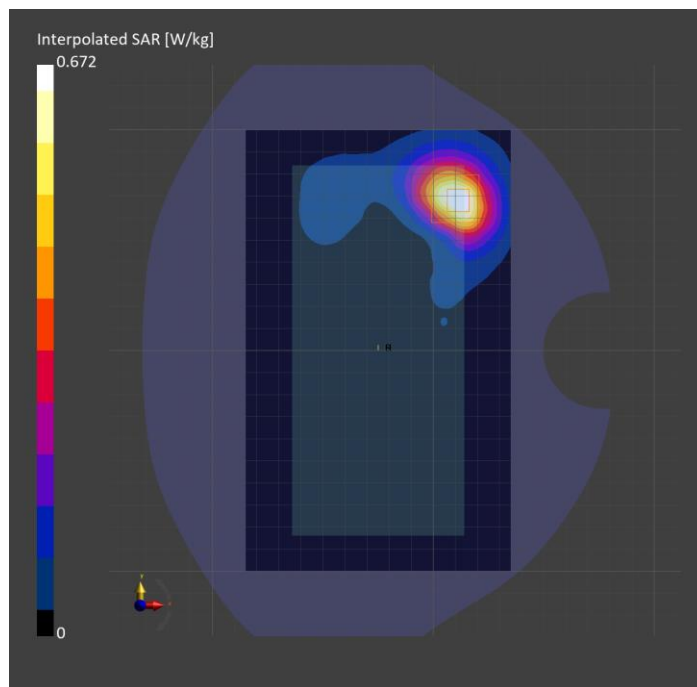
Probe Calibration Date	EX3DV4 - SN3991 2022-09-22	Phantom	Twin-SAM V5.0 (30deg probe tilt)
DAE Calibration Date	DAE4 Sn1377 2022-09-15	TSL Type	HBBL-600-10000

Scan Setup

	Area Scan	Zoom Scan
Grid Extents [mm]	120.0 x 200.0	30.0 x 30.0 x 30.0
Grid Steps [mm]	10.0 x 10.0	5.0 x 5.0 x 1.5
Sensor Surface [mm]	3.0	1.4
Graded Grid	n/a	Yes
M2/M1 [%]		81.7
Dist 3dB Peak [mm]		10.9

Measurement Results

	Area Scan	Zoom Scan
psSAR1g [W/Kg]	0.337	0.349
psSAR10g [W/Kg]	0.170	0.174
Power Drift [dB]	n/a	-0.05



Measurement Report for WLAN 2.4GHz: IEEE 802.11b WiFi 2.4 GHz (DSSS, 1 Mbps, 99pc duty cycle), BACK

Exposure Conditions

Band	WLAN 2.4GHz	TSL Permittivity	40.7
Frequency [MHz] Channel Number	2412.0 1	TSL Conductivity [S/m]	1.78
Group UID	WLAN 10415-AAA	Phantom Section TSL	Flat HSL
Conversion Factor	7.74	Test Distance [mm]	10.00

Hardware Setup

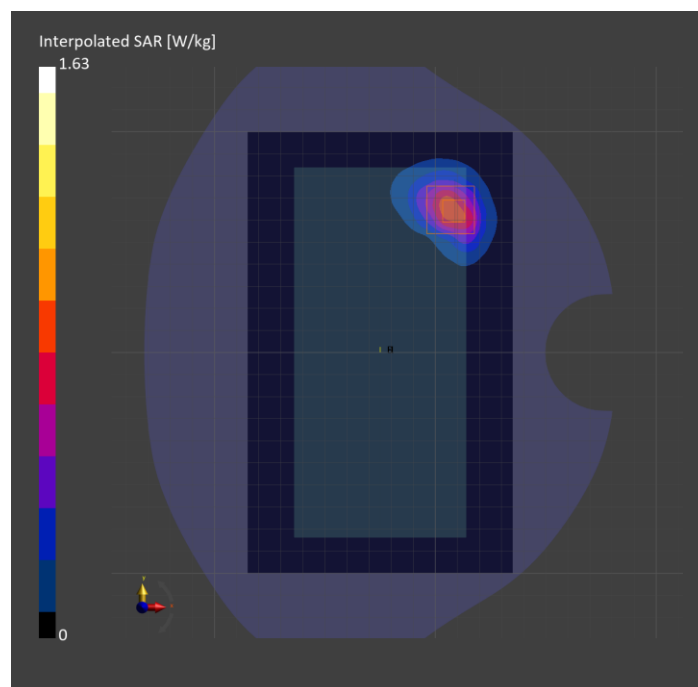
Probe Calibration Date	EX3DV4 - SN3991 2022-09-22	Phantom	Twin-SAM V5.0 (30deg probe tilt)
DAE Calibration Date	DAE4 Sn1377 2022-09-15	TSL Type	HBBL-600-10000

Scan Setup

	Area Scan	Zoom Scan
Grid Extents [mm]	120.0 x 200.0	30.0 x 30.0 x 30.0
Grid Steps [mm]	10.0 x 10.0	5.0 x 5.0 x 1.5
Sensor Surface [mm]	3.0	1.4
Graded Grid	n/a	Yes
M2/M1 [%]		79.8
Dist 3dB Peak [mm]		8.5

Measurement Results

	Area Scan	Zoom Scan
psSAR1g [W/Kg]	0.724	0.773
psSAR10g [W/Kg]	0.348	0.353
Power Drift [dB]	n/a	-0.07



BPSK), TILT

Exposure Conditions

Band	U-NII-1, U-NII-2A	TSL Permittivity	36.7
Frequency [MHz] Channel Number	5270.0 54	TSL Conductivity [S/m]	4.65
Group UID	WLAN 10114-CAD	Phantom Section TSL	RightHead HSL
Conversion Factor	5.35	Test Distance [mm]	0.00

Hardware Setup

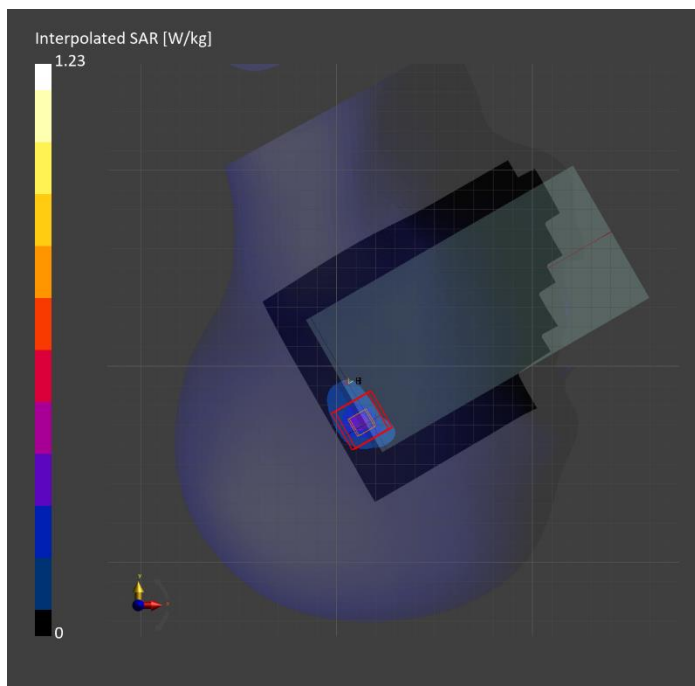
Probe Calibration Date	EX3DV4 - SN3991 2022-09-22	Phantom	Twin-SAM V5.0 (30deg probe tilt)
DAE Calibration Date	DAE4 Sn1377 2022-09-15	TSL Type	HBBL-600-10000

Scan Setup

	Area Scan	Zoom Scan
Grid Extents [mm]	120.0 x 200.0	22.0 x 22.0 x 22.0
Grid Steps [mm]	10.0 x 10.0	4.0 x 4.0 x 1.4
Sensor Surface [mm]	3.0	1.4
Graded Grid	n/a	Yes
M2/M1 [%]		64.0
Dist 3dB Peak [mm]		5.7

Measurement Results

	Area Scan	Zoom Scan
psSAR1g [W/Kg]	0.246	0.310
psSAR10g [W/Kg]	0.085	0.086
Power Drift [dB]	n/a	0.09



Measurement Report for WLAN 5GHz: IEEE 802.11a/h WiFi 5 GHz (OFDM, 6 Mbps, 99pc duty cycle), BACK

Exposure Conditions

Band	WLAN 5GHz	TSL Permittivity	35.9
Frequency [MHz] Channel Number	5260.0 52	TSL Conductivity [S/m]	4.70
Group UID	WLAN 10417-AAC	Phantom Section TSL	Flat HSL
Conversion Factor	5.35	Test Distance [mm]	15.00

Hardware Setup

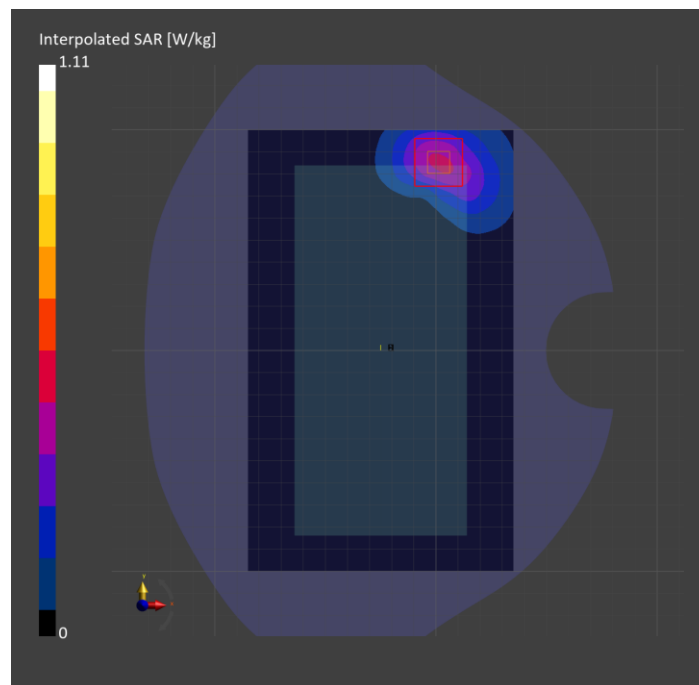
Probe Calibration Date	EX3DV4 - SN3991 2022-09-22	Phantom	Twin-SAM V5.0 (30deg probe tilt)
DAE Calibration Date	DAE4 Sn1377 2022-09-15	TSL Type	HBBL-600-10000

Scan Setup

	Area Scan	Zoom Scan
Grid Extents [mm]	120.0 x 200.0	22.0 x 22.0 x 22.0
Grid Steps [mm]	10.0 x 10.0	4.0 x 4.0 x 1.4
Sensor Surface [mm]	3.0	1.4
Graded Grid	n/a	Yes
M2/M1 [%]		66.5
Dist 3dB Peak [mm]		10.8

Measurement Results

	Area Scan	Zoom Scan
psSAR1g [W/Kg]	0.365	0.356
psSAR10g [W/Kg]	0.153	0.143
Power Drift [dB]	n/a	0.07



Measurement Report for WLAN 5GHz: IEEE 802.11a/h WiFi 5 GHz (OFDM, 6 Mbps, 99pc duty cycle), BACK

Exposure Conditions

Band	WLAN 5GHz	TSL Permittivity	35.9
Frequency [MHz] Channel Number	5260.0 52	TSL Conductivity [S/m]	4.70
Group UID	WLAN 10417-AAC	Phantom Section TSL	Flat HSL
Conversion Factor	5.35	Test Distance [mm]	0.00

Hardware Setup

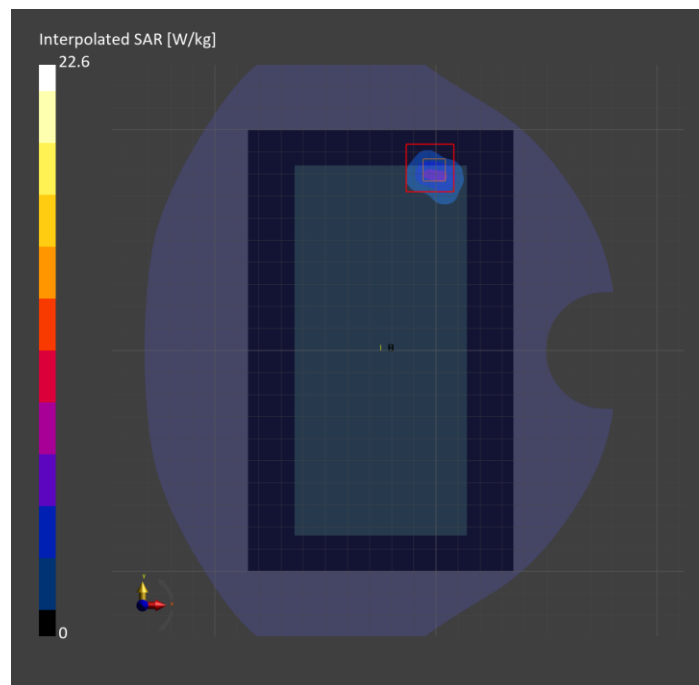
Probe Calibration Date	EX3DV4 - SN3991 2022-09-22	Phantom	Twin-SAM V5.0 (30deg probe tilt)
DAE Calibration Date	DAE4 Sn1377 2022-09-15	TSL Type	HBBL-600-10000

Scan Setup

	Area Scan	Zoom Scan
Grid Extents [mm]	120.0 x 200.0	22.0 x 22.0 x 22.0
Grid Steps [mm]	10.0 x 10.0	3.8 x 3.8 x 1.4
Sensor Surface [mm]	3.0	1.4
Graded Grid	n/a	Yes
M2/M1 [%]		63.7
Dist 3dB Peak [mm]		4.6

Measurement Results

	Area Scan	Zoom Scan
psSAR1g [W/Kg]	4.31	5.18
psSAR10g [W/Kg]	1.36	1.42
Power Drift [dB]	n/a	0.04



Measurement Report for WLAN 5GHz: IEEE 802.11ac WiFi (80MHz, MCS0, 99pc duty cycle), TILT

Exposure Conditions

Band	WLAN 5GHz	TSL Permittivity	36.1
Frequency [MHz] Channel Number	5610.0 122	TSL Conductivity [S/m]	5.03
Group UID	WLAN 10544-AAC	Phantom Section TSL	LeftHead HSL
Conversion Factor	4.65	Test Distance [mm]	0.00

Hardware Setup

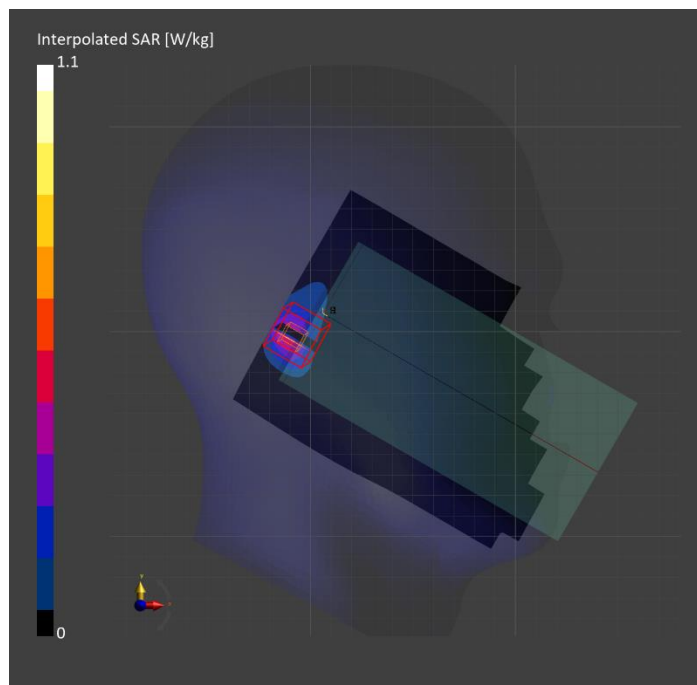
Probe Calibration Date	EX3DV4 - SN3991 2022-09-22	Phantom	Twin-SAM V5.0 (30deg probe tilt)
DAE Calibration Date	DAE4 Sn1377 2022-09-15	TSL Type	HBBL-600-10000

Scan Setup

	Area Scan	Zoom Scan
Grid Extents [mm]	120.0 x 200.0	22.0 x 22.0 x 22.0
Grid Steps [mm]	10.0 x 10.0	4.0 x 4.0 x 1.4
Sensor Surface [mm]	3.0	1.4
Graded Grid	n/a	Yes
M2/M1 [%]		68.2
Dist 3dB Peak [mm]		8.5

Measurement Results

	Area Scan	Zoom Scan
psSAR1g [W/Kg]	0.347	0.330
psSAR10g [W/Kg]	0.120	0.112
Power Drift [dB]	n/a	-0.01



Measurement Report for WLAN 5GHz: IEEE 802.11a/h WiFi 5 GHz (OFDM, 6 Mbps, 99pc duty cycle), BACK

Exposure Conditions

Band	WLAN 5GHz	TSL Permittivity	36.5
Frequency [MHz] Channel Number	5580.0 116	TSL Conductivity [S/m]	4.90
Group UID	WLAN 10417-AAC	Phantom Section TSL	Flat HSL
Conversion Factor	4.65	Test Distance [mm]	15.00

Hardware Setup

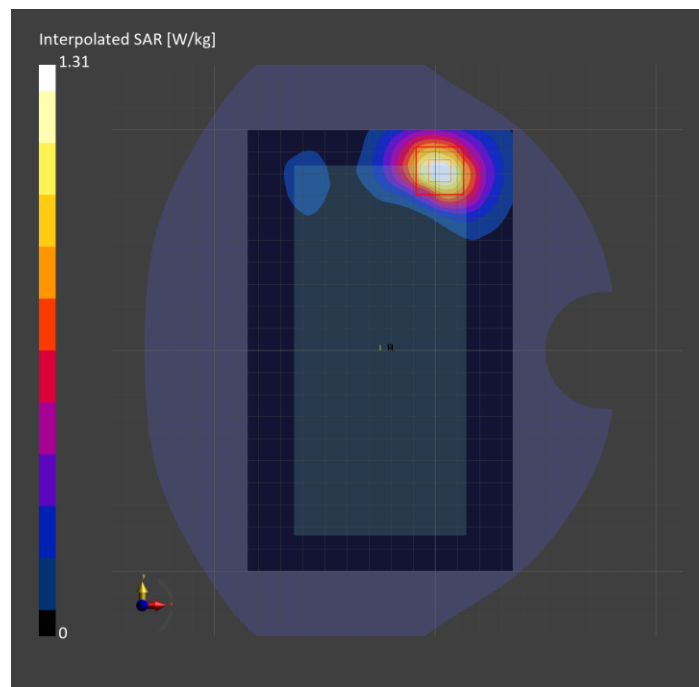
Probe Calibration Date	EX3DV4 - SN3991 2022-09-22	Phantom	Twin-SAM V5.0 (30deg probe tilt)
DAE Calibration Date	DAE4 Sn1377 2022-09-15	TSL Type	HBBL-600-10000

Scan Setup

	Area Scan	Zoom Scan
Grid Extents [mm]	120.0 x 200.0	22.0 x 22.0 x 22.0
Grid Steps [mm]	10.0 x 10.0	4.0 x 4.0 x 1.4
Sensor Surface [mm]	3.0	1.4
Graded Grid	n/a	Yes
M2/M1 [%]		63.0
Dist 3dB Peak [mm]		10.8

Measurement Results

	Area Scan	Zoom Scan
psSAR1g [W/Kg]	0.384	0.380
psSAR10g [W/Kg]	0.151	0.143
Power Drift [dB]	n/a	0.01



Measurement Report for WLAN 5GHz: IEEE 802.11a/h WiFi 5 GHz (OFDM, 6 Mbps, 99pc duty cycle), EDGE TOP

Exposure Conditions

Band	WLAN 5GHz	TSL Permittivity	36.5
Frequency [MHz] Channel Number	5580.0 116	TSL Conductivity [S/m]	4.90
Group UID	WLAN 10417-AAC	Phantom Section TSL	Flat HSL
Conversion Factor	4.65	Test Distance [mm]	0.00

Hardware Setup

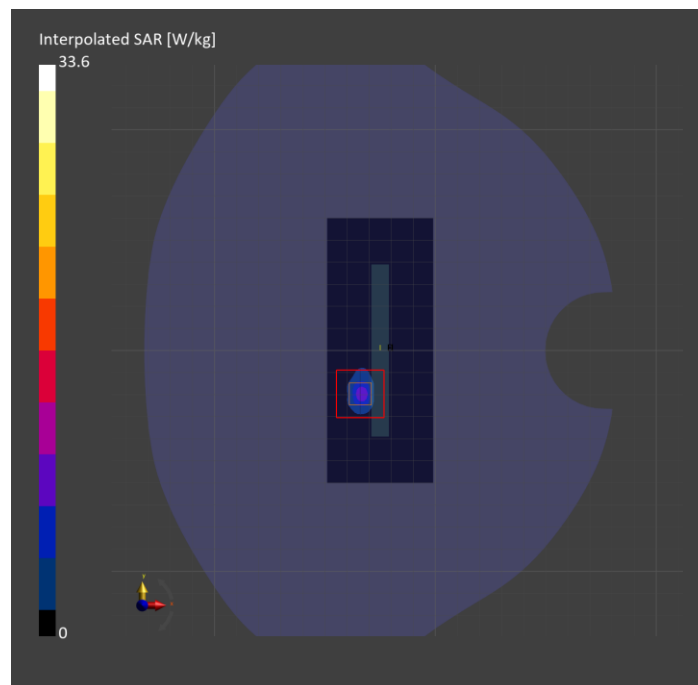
Probe Calibration Date	EX3DV4 - SN3991 2022-09-22	Phantom	Twin-SAM V5.0 (30deg probe tilt)
DAE Calibration Date	DAE4 Sn1377 2022-09-15	TSL Type	HBBL-600-10000

Scan Setup

	Area Scan	Zoom Scan
Grid Extents [mm]	48.0 x 120.0	22.0 x 22.0 x 22.0
Grid Steps [mm]	8.0 x 10.0	2.6 x 2.6 x 1.2
Sensor Surface [mm]	3.0	1.4
Graded Grid	n/a	Yes
M2/M1 [%]		61.7
Dist 3dB Peak [mm]		4.0

Measurement Results

	Area Scan	Zoom Scan
psSAR1g [W/Kg]	5.34	5.89
psSAR10g [W/Kg]	1.18	1.24
Power Drift [dB]	n/a	-0.12



Measurement Report for WLAN 5GHz: IEEE 802.11ac WiFi (80MHz, MCS0, 99pc duty cycle), TILT

Exposure Conditions

Band	WLAN 5GHz	TSL Permittivity	36.2
Frequency [MHz] Channel Number	5775.0 155	TSL Conductivity [S/m]	5.12
Group UID	WLAN 10544-AAC	Phantom Section TSL	LeftHead HSL
Conversion Factor	4.8	Test Distance [mm]	0.00

Hardware Setup

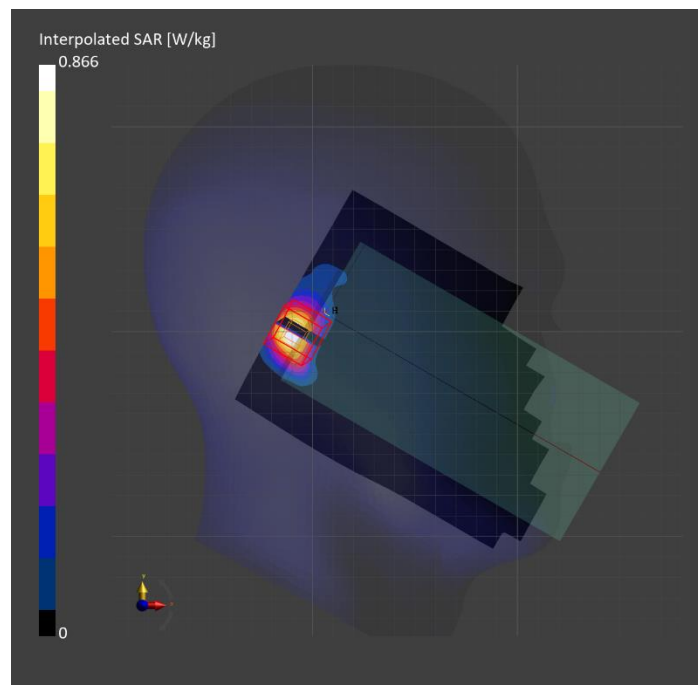
Probe Calibration Date	EX3DV4 - SN3991 2022-09-22	Phantom	Twin-SAM V5.0 (30deg probe tilt)
DAE Calibration Date	DAE4 Sn1377 2022-09-15	TSL Type	HBBL-600-10000

Scan Setup

	Area Scan	Zoom Scan
Grid Extents [mm]	120.0 x 200.0	22.0 x 22.0 x 22.0
Grid Steps [mm]	10.0 x 10.0	4.0 x 4.0 x 1.4
Sensor Surface [mm]	3.0	1.4
Graded Grid	n/a	Yes
M2/M1 [%]		63.6
Dist 3dB Peak [mm]		8.9

Measurement Results

	Area Scan	Zoom Scan
psSAR1g [W/Kg]	0.282	0.252
psSAR10g [W/Kg]	0.100	0.087
Power Drift [dB]	n/a	0.14



Measurement Report for WLAN 5GHz: IEEE 802.11a/h WiFi 5 GHz (OFDM, 6 Mbps, 99pc duty cycle), BACK

Exposure Conditions

Band	WLAN 5GHz	TSL Permittivity	35.7
Frequency [MHz] Channel Number	5825.0 165	TSL Conductivity [S/m]	5.29
Group UID	WLAN 10417-AAC	Phantom Section TSL	Flat HSL
Conversion Factor	4.8	Test Distance [mm]	15.00

Hardware Setup

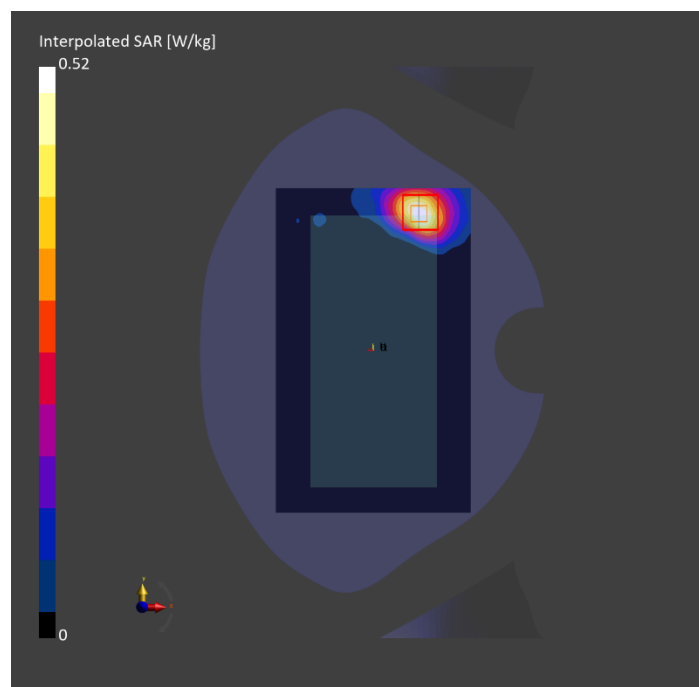
Probe Calibration Date	EX3DV4 - SN3991 2022-09-22	Phantom	Twin-SAM V5.0 (30deg probe tilt)
DAE Calibration Date	DAE4 Sn1377 2022-09-15	TSL Type	HBBL-600-10000

Scan Setup

	Area Scan	Zoom Scan
Grid Extents [mm]	120.0 x 200.0	22.0 x 22.0 x 22.0
Grid Steps [mm]	10.0 x 10.0	4.0 x 4.0 x 1.4
Sensor Surface [mm]	3.0	1.4
Graded Grid	n/a	Yes
M2/M1 [%]		55.4
Dist 3dB Peak [mm]		11.6

Measurement Results

	Area Scan	Zoom Scan
psSAR1g [W/Kg]	0.140	0.128
psSAR10g [W/Kg]	0.056	0.044
Power Drift [dB]	n/a	0.07



Measurement Report for WLAN 5GHz: IEEE 802.11a/h WiFi 5 GHz (OFDM, 6 Mbps, 99pc duty cycle), BACK

Exposure Conditions

Band	WLAN 5GHz	TSL Permittivity	35.8
Frequency [MHz] Channel Number	5745.0 149	TSL Conductivity [S/m]	5.20
Group UID	WLAN 10417-AAC	Phantom Section TSL	Flat HSL
Conversion Factor	4.8	Test Distance [mm]	10.00

Hardware Setup

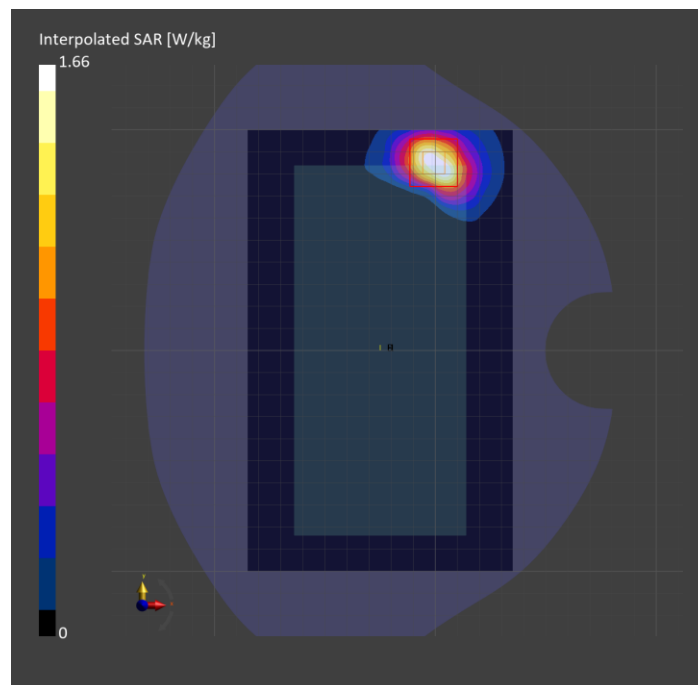
Probe Calibration Date	EX3DV4 - SN3991 2022-09-22	Phantom	Twin-SAM V5.0 (30deg probe tilt)
DAE Calibration Date	DAE4 Sn1377 2022-09-15	TSL Type	HBBL-600-10000

Scan Setup

	Area Scan	Zoom Scan
Grid Extents [mm]	120.0 x 200.0	22.0 x 22.0 x 22.0
Grid Steps [mm]	10.0 x 10.0	4.0 x 4.0 x 1.4
Sensor Surface [mm]	3.0	1.4
Graded Grid	n/a	Yes
M2/M1 [%]		59.2
Dist 3dB Peak [mm]		8.3

Measurement Results

	Area Scan	Zoom Scan
psSAR1g [W/Kg]	0.405	0.426
psSAR10g [W/Kg]	0.153	0.145
Power Drift [dB]	n/a	-0.10



Measurement Report for WLAN 5GHz: IEEE 802.11a/h WiFi 5 GHz (OFDM, 6 Mbps, 99pc duty cycle), EDGE TOP

Exposure Conditions

Band	WLAN 5GHz	TSL Permittivity	35.7
Frequency [MHz] Channel Number	5825.0 165	TSL Conductivity [S/m]	5.29
Group UID	WLAN 10417-AAC	Phantom Section TSL	Flat HSL
Conversion Factor	4.8	Test Distance [mm]	0.00

Hardware Setup

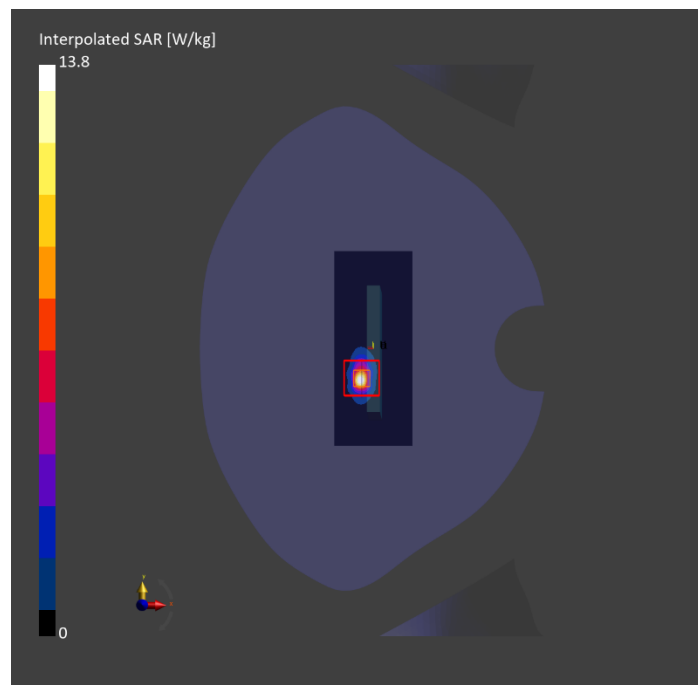
Probe Calibration Date	EX3DV4 - SN3991 2022-09-22	Phantom	Twin-SAM V5.0 (30deg probe tilt)
DAE Calibration Date	DAE4 Sn1377 2022-09-15	TSL Type	HBBL-600-10000

Scan Setup

	Area Scan	Zoom Scan
Grid Extents [mm]	48.0 x 120.0	22.0 x 22.0 x 22.0
Grid Steps [mm]	8.0 x 10.0	2.6 x 2.6 x 1.2
Sensor Surface [mm]	3.0	1.4
Graded Grid	n/a	Yes
M2/M1 [%]		60.8
Dist 3dB Peak [mm]		3.8

Measurement Results

	Area Scan	Zoom Scan
psSAR1g [W/Kg]	2.04	2.29
psSAR10g [W/Kg]	0.442	0.464
Power Drift [dB]	n/a	-0.05



Measurement Report for ISM 2.4 GHz Band: IEEE 802.15.1 Bluetooth (GFSK, DH5), CHEEK

Exposure Conditions

Band	ISM 2.4 GHz Band	TSL Permittivity	40.6
Frequency [MHz] Channel Number	2441.0 39	TSL Conductivity [S/m]	1.81
Group UID	Bluetooth 10032-CAA	Phantom Section TSL	RightHead HSL
Conversion Factor	7.74	Test Distance [mm]	0.00

Hardware Setup

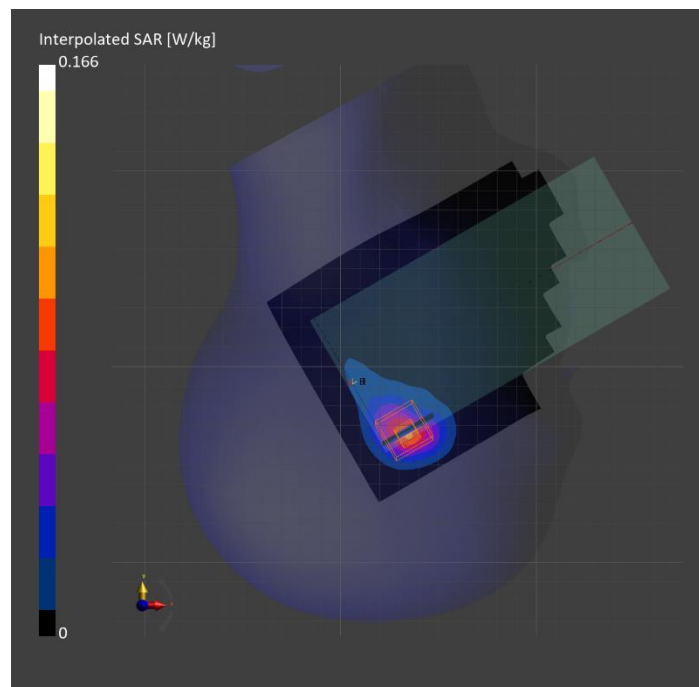
Probe Calibration Date	EX3DV4 - SN3991 2022-09-22	Phantom	Twin-SAM V5.0 (30deg probe tilt)
DAE Calibration Date	DAE4 Sn1377 2022-09-15	TSL Type	HBBL-600-10000

Scan Setup

	Area Scan	Zoom Scan
Grid Extents [mm]	120.0 x 200.0	30.0 x 30.0 x 30.0
Grid Steps [mm]	10.0 x 10.0	5.0 x 5.0 x 1.5
Sensor Surface [mm]	3.0	1.4
Graded Grid	n/a	Yes
M2/M1 [%]		76.5
Dist 3dB Peak [mm]		9.0

Measurement Results

	Area Scan	Zoom Scan
psSAR1g [W/Kg]	0.074	0.076
psSAR10g [W/Kg]	0.035	0.035
Power Drift [dB]	n/a	-0.11



Measurement Report for ISM 2.4 GHz Band: IEEE 802.15.1 Bluetooth (GFSK, DH5), BACK

Exposure Conditions

Band	ISM 2.4 GHz Band	TSL Permittivity	40.6
Frequency [MHz] Channel Number	2441.0 39	TSL Conductivity [S/m]	1.81
Group UID	Bluetooth 10032-CAA	Phantom Section TSL	Flat HSL
Conversion Factor	7.74	Test Distance [mm]	15.00

Hardware Setup

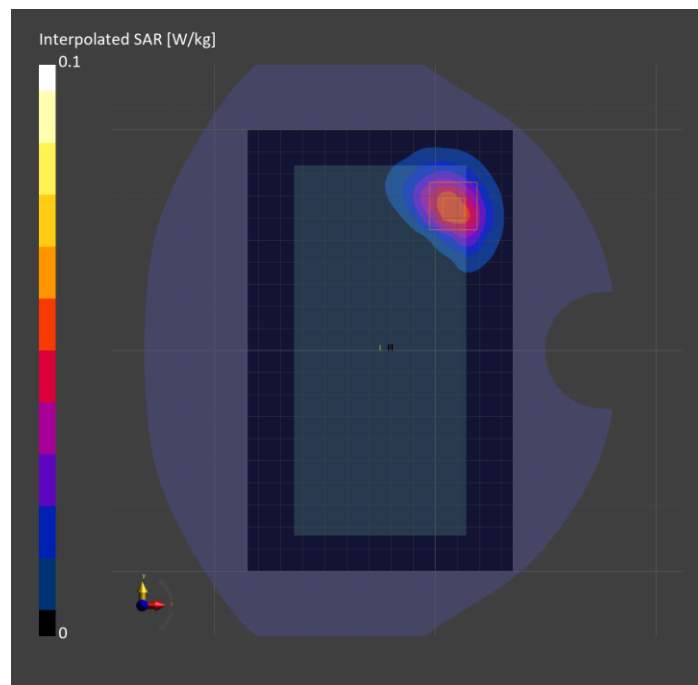
Probe Calibration Date	EX3DV4 - SN3991 2022-09-22	Phantom	Twin-SAM V5.0 (30deg probe tilt)
DAE Calibration Date	DAE4 Sn1377 2022-09-15	TSL Type	HBBL-600-10000

Scan Setup

	Area Scan	Zoom Scan
Grid Extents [mm]	120.0 x 200.0	30.0 x 30.0 x 30.0
Grid Steps [mm]	10.0 x 10.0	5.0 x 5.0 x 1.5
Sensor Surface [mm]	3.0	1.4
Graded Grid	n/a	Yes
M2/M1 [%]		79.1
Dist 3dB Peak [mm]		9.9

Measurement Results

	Area Scan	Zoom Scan
psSAR1g [W/Kg]	0.047	0.047
psSAR10g [W/Kg]	0.023	0.022
Power Drift [dB]	n/a	0.02



Measurement Report for ISM 2.4 GHz Band: IEEE 802.15.1 Bluetooth (GFSK, DH5), BACK

Exposure Conditions

Band	ISM 2.4 GHz Band	TSL Permittivity	40.6
Frequency [MHz] Channel Number	2441.0 39	TSL Conductivity [S/m]	1.81
Group UID	Bluetooth 10032-CAA	Phantom Section TSL	Flat HSL
Conversion Factor	7.74	Test Distance [mm]	10.00

Hardware Setup

Probe Calibration Date	EX3DV4 - SN3991 2022-09-22	Phantom	Twin-SAM V5.0 (30deg probe tilt)
DAE Calibration Date	DAE4 Sn1377 2022-09-15	TSL Type	HBBL-600-10000

Scan Setup

	Area Scan	Zoom Scan
Grid Extents [mm]	120.0 x 200.0	30.0 x 30.0 x 30.0
Grid Steps [mm]	10.0 x 10.0	5.0 x 5.0 x 1.5
Sensor Surface [mm]	3.0	1.4
Graded Grid	n/a	Yes
M2/M1 [%]		78.4
Dist 3dB Peak [mm]		8.5

Measurement Results

	Area Scan	Zoom Scan
psSAR1g [W/Kg]	0.095	0.101
psSAR10g [W/Kg]	0.045	0.045
Power Drift [dB]	n/a	-0.06

