

System Performance Check Report for D750V3 - SN1019

Exposure Conditions

Frequency [MHz] Channel Number	750.0 0	TSL Permittivity	42.5
Group UID	CW 0--	TSL Conductivity [S/m]	0.875
Conversion Factor	9.76	Phantom Section TSL	Flat HSL

Hardware Setup

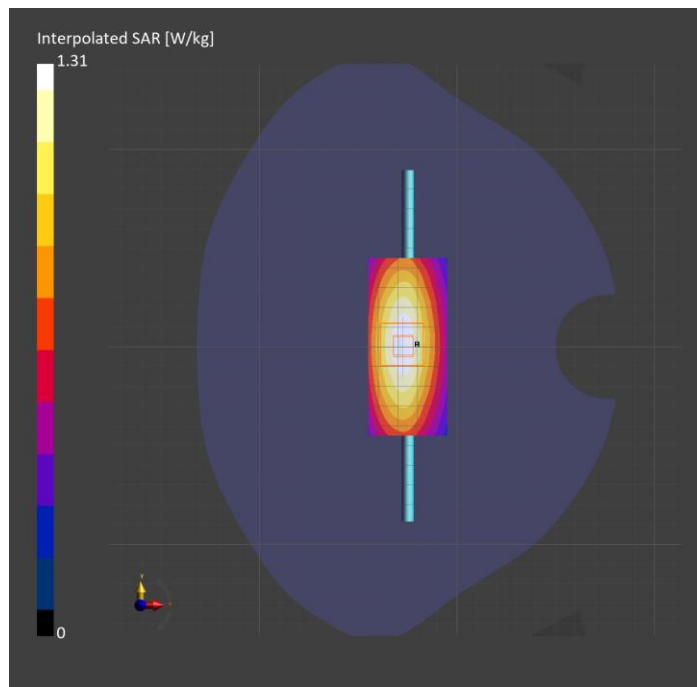
Probe Calibration Date	EX3DV4 - SN7463 2022-05-27	Phantom	Twin-SAM V8.0 (30deg probe tilt)
DAE Calibration Date	DAE4 Sn1257 2022-09-20	TSL Type	HBBL-600-10000

Scans Setup

	Area Scan	Zoom Scan
Grid Extents [mm]	40.0 x 90.0	30.0 x 30.0 x 30.0
Grid Steps [mm]	10.0 x 15.0	6.0 x 6.0 x 1.5
Sensor Surface [mm]	3.0	1.4
Graded Grid	n/a	Yes
M2/M1 [%]		88.0
Dist 3dB Peak [mm]		> 15.0

Measurement Results

	Area Scan	Zoom Scan
psSAR1g [W/Kg]	0.879	0.873
psSAR10g [W/Kg]	0.589	0.580
Power Drift [dB]	n/a	-0.01



System Performance Check Report for D900V2 - SN1d143

Exposure Conditions

Frequency [MHz] Channel Number	900.0 0	TSL Permittivity	41.9
Group UID	CW 0--	TSL Conductivity [S/m]	0.928
Conversion Factor	9.32	Phantom Section TSL	Flat HSL

Hardware Setup

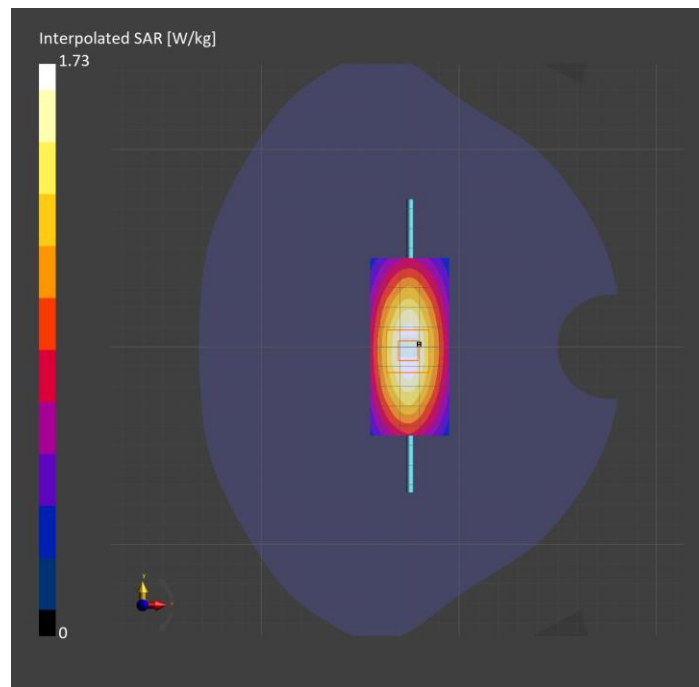
Probe Calibration Date	EX3DV4 - SN7463 2022-05-27	Phantom	Twin-SAM V8.0 (30deg probe tilt)
DAE Calibration Date	DAE4 Sn1257 2022-09-20	TSL Type	HBBL-600-10000

Scans Setup

	Area Scan	Zoom Scan
Grid Extents [mm]	40.0 x 90.0	30.0 x 30.0 x 30.0
Grid Steps [mm]	10.0 x 15.0	6.0 x 6.0 x 1.5
Sensor Surface [mm]	3.0	1.4
Graded Grid	n/a	Yes
M2/M1 [%]		87.3
Dist 3dB Peak [mm]		21.3

Measurement Results

	Area Scan	Zoom Scan
psSAR1g [W/Kg]	1.12	1.13
psSAR10g [W/Kg]	0.730	0.746
Power Drift [dB]	n/a	0.02



System Performance Check Report for D1750V2 - SN1050

Exposure Conditions

Frequency [MHz] Channel Number	1750.0 0	TSL Permittivity	40.1
Group UID	CW 0--	TSL Conductivity [S/m]	1.33
Conversion Factor	8.51	Phantom Section TSL	Flat HSL

Hardware Setup

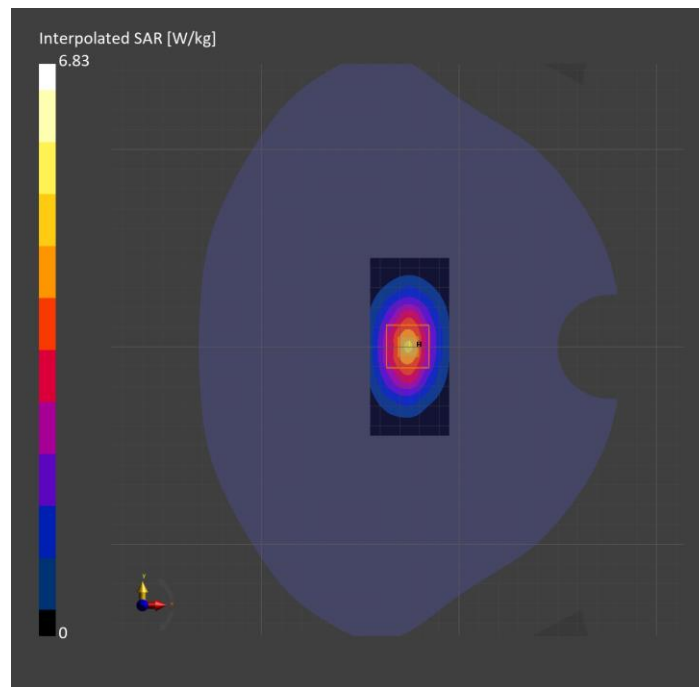
Probe Calibration Date	EX3DV4 - SN7463 2022-05-27	Phantom	Twin-SAM V8.0 (30deg probe tilt)
DAE Calibration Date	DAE4 Sn1257 2022-09-20	TSL Type	HBBL-600-10000

Scans Setup

	Area Scan	Zoom Scan
Grid Extents [mm]	40.0 x 90.0	30.0 x 30.0 x 30.0
Grid Steps [mm]	10.0 x 15.0	6.0 x 6.0 x 1.5
Sensor Surface [mm]	3.0	1.4
Graded Grid	n/a	Yes
M2/M1 [%]		82.4
Dist 3dB Peak [mm]		10.8

Measurement Results

	Area Scan	Zoom Scan
psSAR1g [W/Kg]	3.75	3.74
psSAR10g [W/Kg]	2.03	2.03
Power Drift [dB]	n/a	0.01



System Performance Check Report for D1900V2 - SN5d163

Exposure Conditions

Frequency [MHz] Channel Number	1900.0 0	TSL Permittivity	39.9
Group UID	CW 0--	TSL Conductivity [S/m]	1.42
Conversion Factor	8.12	Phantom Section TSL	Flat HSL

Hardware Setup

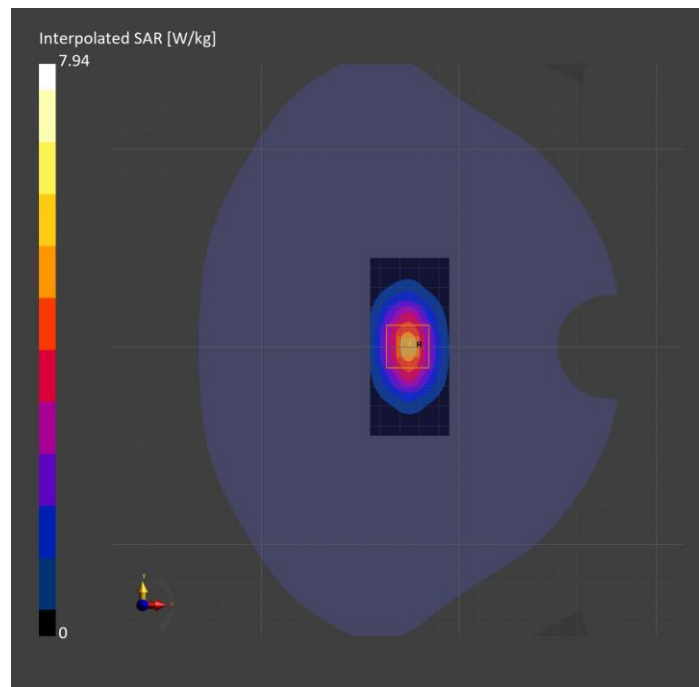
Probe Calibration Date	EX3DV4 - SN7463 2022-05-27	Phantom	Twin-SAM V8.0 (30deg probe tilt)
DAE Calibration Date	DAE4 Sn1257 2022-09-20	TSL Type	HBBL-600-10000

Scans Setup

	Area Scan	Zoom Scan
Grid Extents [mm]	40.0 x 90.0	30.0 x 30.0 x 30.0
Grid Steps [mm]	10.0 x 15.0	6.0 x 6.0 x 1.5
Sensor Surface [mm]	3.0	1.4
Graded Grid	n/a	Yes
M2/M1 [%]		81.2
Dist 3dB Peak [mm]		10.3

Measurement Results

	Area Scan	Zoom Scan
psSAR1g [W/Kg]	4.18	4.21
psSAR10g [W/Kg]	2.19	2.23
Power Drift [dB]	n/a	0.01



System Performance Check Report for D2450V2 - SN899

Exposure Conditions

Frequency [MHz] Channel Number	2450.0 0	TSL Permittivity	40.6
Group UID	CW 0--	TSL Conductivity [S/m]	1.82
Conversion Factor	7.74	Phantom Section TSL	Flat HSL

Hardware Setup

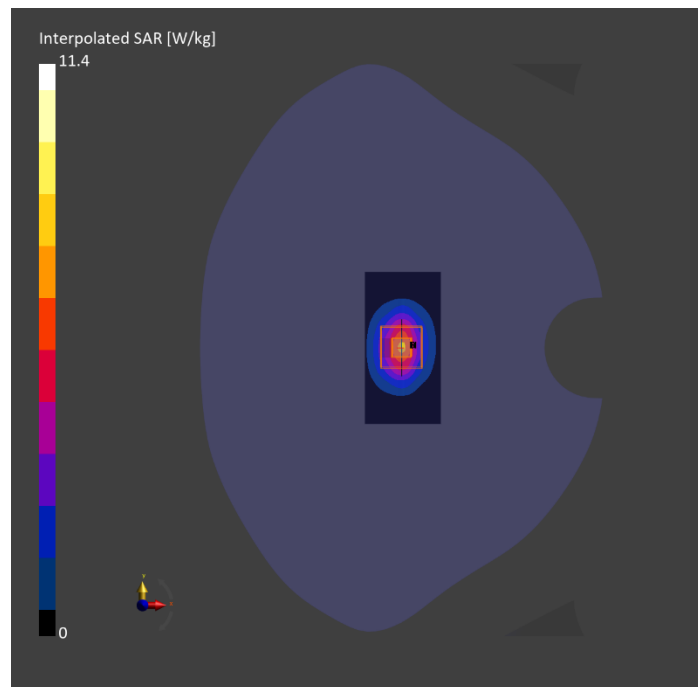
Probe Calibration Date	EX3DV4 - SN3991 2022-09-22	Phantom	Twin-SAM V5.0 (30deg probe tilt)
DAE Calibration Date	DAE4 Sn1377 2022-09-15	TSL Type	HBBL-600-10000

Scans Setup

	Area Scan	Zoom Scan
Grid Extents [mm]	40.0 x 80.0	30.0 x 30.0 x 30.0
Grid Steps [mm]	10.0 x 10.0	5.0 x 5.0 x 1.5
Sensor Surface [mm]	3.0	1.4
Graded Grid	n/a	Yes
M2/M1 [%]		77.9
Dist 3dB Peak [mm]		9.0

Measurement Results

	Area Scan	Zoom Scan
psSAR1g [W/Kg]	5.24	5.31
psSAR10g [W/Kg]	2.44	2.48
Power Drift [dB]	n/a	0.01



System Performance Check Report for D2600V2 - SN1036

Exposure Conditions

Frequency [MHz] Channel Number	2600.0 0	TSL Permittivity	40.3
Group UID	CW 0--	TSL Conductivity [S/m]	1.94
Conversion Factor	7.55	Phantom Section TSL	Flat HSL

Hardware Setup

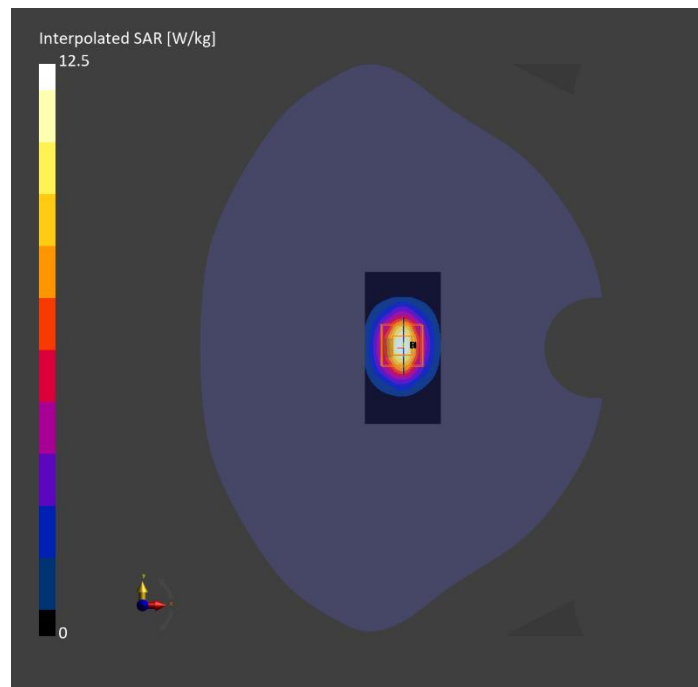
Probe Calibration Date	EX3DV4 - SN3991 2022-09-22	Phantom	Twin-SAM V5.0 (30deg probe tilt)
DAE Calibration Date	DAE4 Sn1377 2022-09-15	TSL Type	HBBL-600-10000

Scans Setup

	Area Scan	Zoom Scan
Grid Extents [mm]	40.0 x 80.0	30.0 x 30.0 x 30.0
Grid Steps [mm]	10.0 x 10.0	5.0 x 5.0 x 1.5
Sensor Surface [mm]	3.0	1.4
Graded Grid	n/a	Yes
M2/M1 [%]		78.5
Dist 3dB Peak [mm]		9.0

Measurement Results

	Area Scan	Zoom Scan
psSAR1g [W/Kg]	5.78	5.83
psSAR10g [W/Kg]	2.58	2.63
Power Drift [dB]	n/a	0.00



System Performance Check Report for D5GHzV2 - SN1003

Exposure Conditions

Frequency [MHz] Channel Number	5600.0 0	TSL Permittivity	36.5
Group UID	CW 0--	TSL Conductivity [S/m]	4.91
Conversion Factor	4.65	Phantom Section TSL	Flat HSL

Hardware Setup

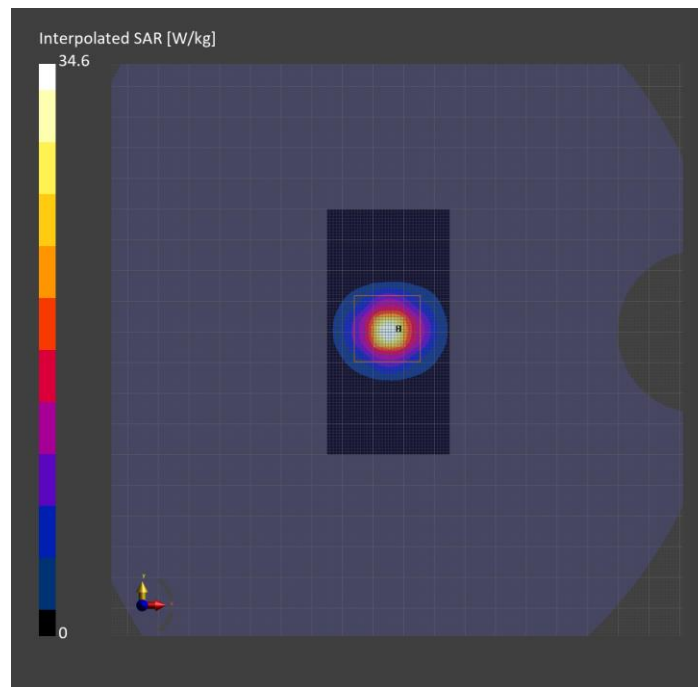
Probe Calibration Date	EX3DV4 - SN3991 2022-09-22	Phantom	Twin-SAM V5.0 (30deg probe tilt)
DAE Calibration Date	DAE4 Sn1377 2022-09-15	TSL Type	HBBL-600-10000

Scans Setup

	Area Scan	Zoom Scan
Grid Extents [mm]	40.0 x 80.0	22.0 x 22.0 x 22.0
Grid Steps [mm]	10.0 x 10.0	4.0 x 4.0 x 1.4
Sensor Surface [mm]	3.0	1.4
Graded Grid	n/a	Yes
M2/M1 [%]		64.0
Dist 3dB Peak [mm]		7.9

Measurement Results

	Area Scan	Zoom Scan
psSAR1g [W/Kg]	8.36	8.80
psSAR10g [W/Kg]	2.37	2.53
Power Drift [dB]	n/a	-0.03



System Performance Check Report for D5GHzV2 - SN1003

Exposure Conditions

Frequency [MHz] Channel Number	5250.0 0	TSL Permittivity	36.7
Group UID	CW 0--	TSL Conductivity [S/m]	4.63
Conversion Factor	5.35	Phantom Section TSL	Flat HSL

Hardware Setup

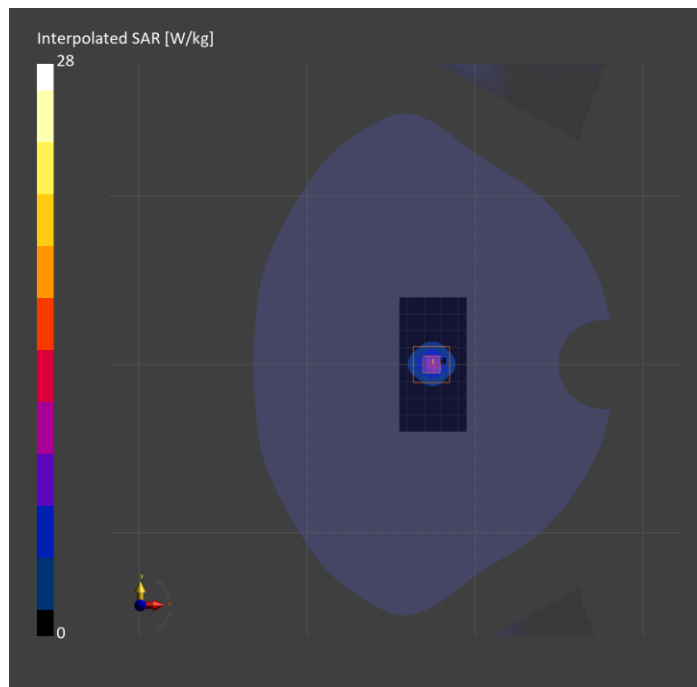
Probe Calibration Date	EX3DV4 - SN3991 2022-09-22	Phantom	Twin-SAM V5.0 (30deg probe tilt)
DAE Calibration Date	DAE4 Sn1377 2022-09-15	TSL Type	HBBL-600-10000

Scans Setup

	Area Scan	Zoom Scan
Grid Extents [mm]	40.0 x 80.0	22.0 x 22.0 x 22.0
Grid Steps [mm]	10.0 x 10.0	4.0 x 4.0 x 1.4
Sensor Surface [mm]	3.0	1.4
Graded Grid	n/a	Yes
M2/M1 [%]		65.8
Dist 3dB Peak [mm]		7.2

Measurement Results

	Area Scan	Zoom Scan
psSAR1g [W/Kg]	7.06	7.59
psSAR10g [W/Kg]	2.02	2.22
Power Drift [dB]	n/a	-0.06



System Performance Check Report for D5GHzV2 - SN1003

Exposure Conditions

Frequency [MHz] Channel Number	5750.0 0	TSL Permittivity	35.8
Group UID	CW 0--	TSL Conductivity [S/m]	5.21
Conversion Factor	4.8	Phantom Section TSL	Flat HSL

Hardware Setup

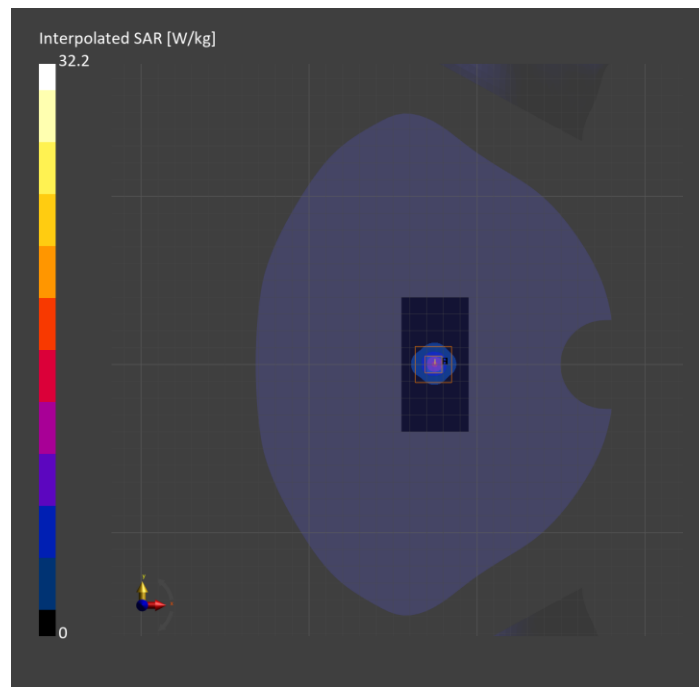
Probe Calibration Date	EX3DV4 - SN3991 2022-09-22	Phantom	Twin-SAM V5.0 (30deg probe tilt)
DAE Calibration Date	DAE4 Sn1377 2022-09-15	TSL Type	HBBL-600-10000

Scans Setup

	Area Scan	Zoom Scan
Grid Extents [mm]	40.0 x 80.0	22.0 x 22.0 x 22.0
Grid Steps [mm]	10.0 x 10.0	4.0 x 4.0 x 1.4
Sensor Surface [mm]	3.0	1.4
Graded Grid	n/a	Yes
M2/M1 [%]		60.8
Dist 3dB Peak [mm]		7.2

Measurement Results

	Area Scan	Zoom Scan
psSAR1g [W/Kg]	7.03	7.72
psSAR10g [W/Kg]	2.00	2.23
Power Drift [dB]	n/a	-0.05



System Performance Check Report for D5GHzV2 - SN1168

Exposure Conditions

Frequency [MHz] Channel Number	5250.0 0	TSL Permittivity	35.9
Group UID	CW 0--	TSL Conductivity [S/m]	4.70
Conversion Factor	5.35	Phantom Section TSL	Flat HSL

Hardware Setup

Probe Calibration Date	EX3DV4 - SN3991 2022-09-22	Phantom	Twin-SAM V5.0 (30deg probe tilt)
DAE Calibration Date	DAE4 Sn1377 2022-09-15	TSL Type	HBBL-600-10000

Scans Setup

	Area Scan	Zoom Scan
Grid Extents [mm]	40.0 x 80.0	22.0 x 22.0 x 22.0
Grid Steps [mm]	10.0 x 10.0	4.0 x 4.0 x 1.4
Sensor Surface [mm]	3.0	1.4
Graded Grid	n/a	Yes
M2/M1 [%]		65.3
Dist 3dB Peak [mm]		7.4

Measurement Results

	Area Scan	Zoom Scan
psSAR1g [W/Kg]	7.49	8.15
psSAR10g [W/Kg]	2.18	2.41
Power Drift [dB]	n/a	0.02

