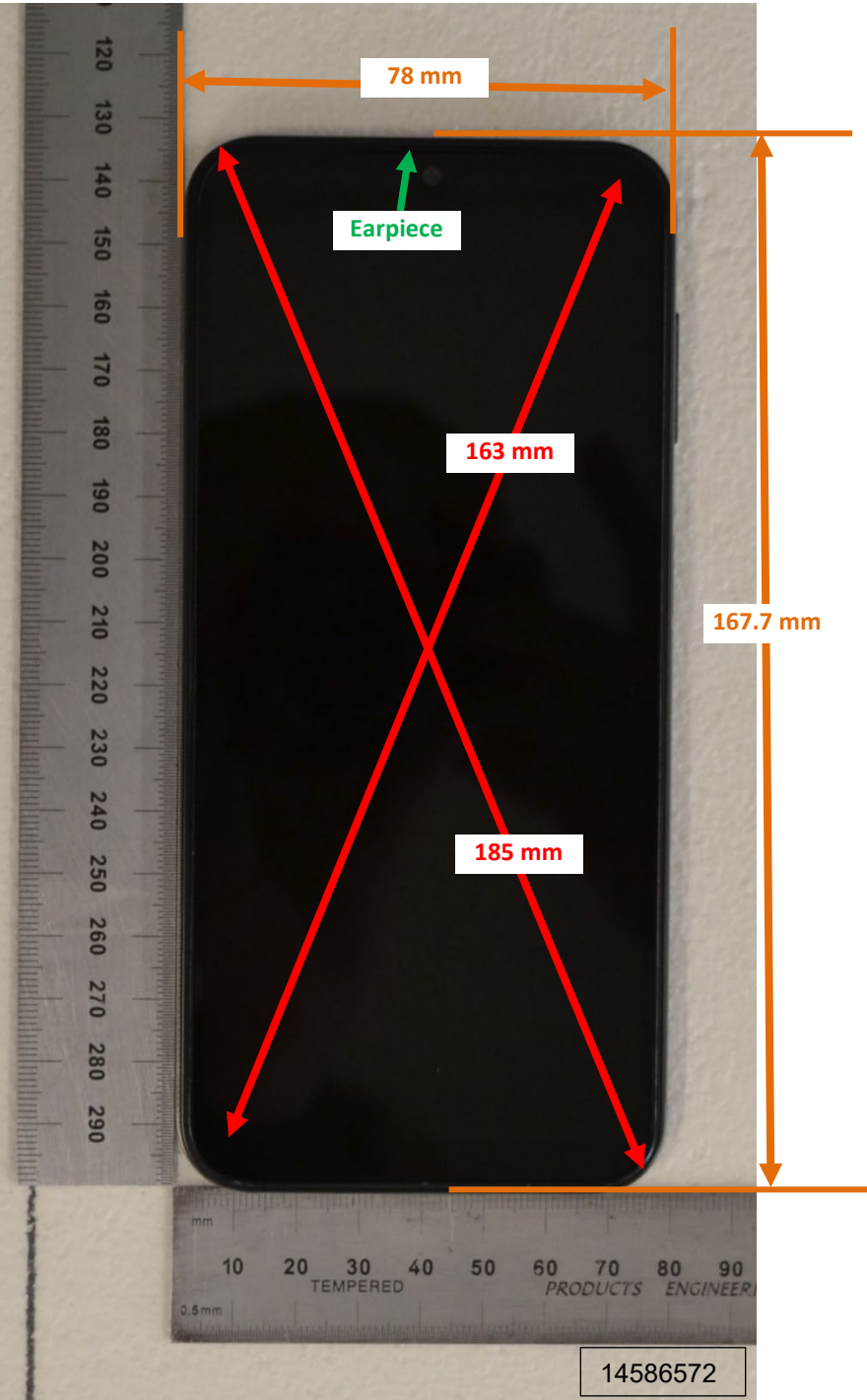


# DUT and SAR Set-up Photos

Photograph 1: Overall Dimensions



Photograph 2: Front View of the DUT



14586572

Photograph 3: Back View of the DUT



14586572

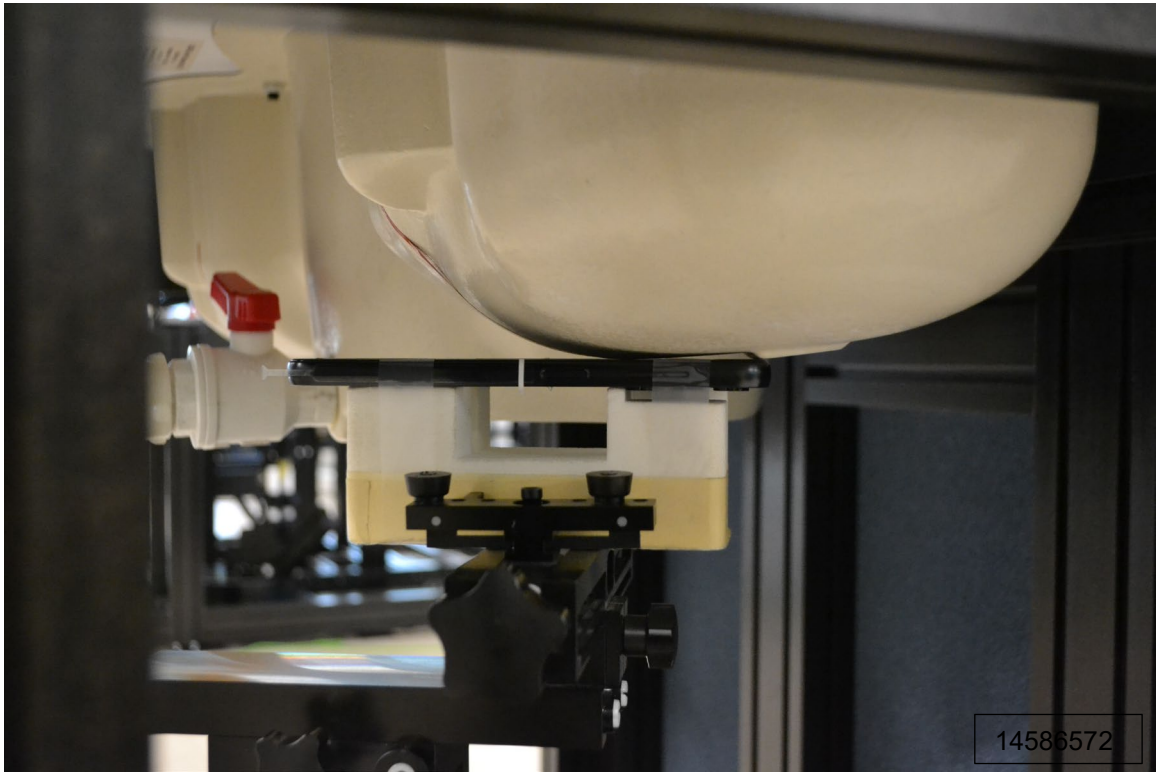
## Setup Photos

Photograph 4: Handset Vertical and Horizontal Reference Lines

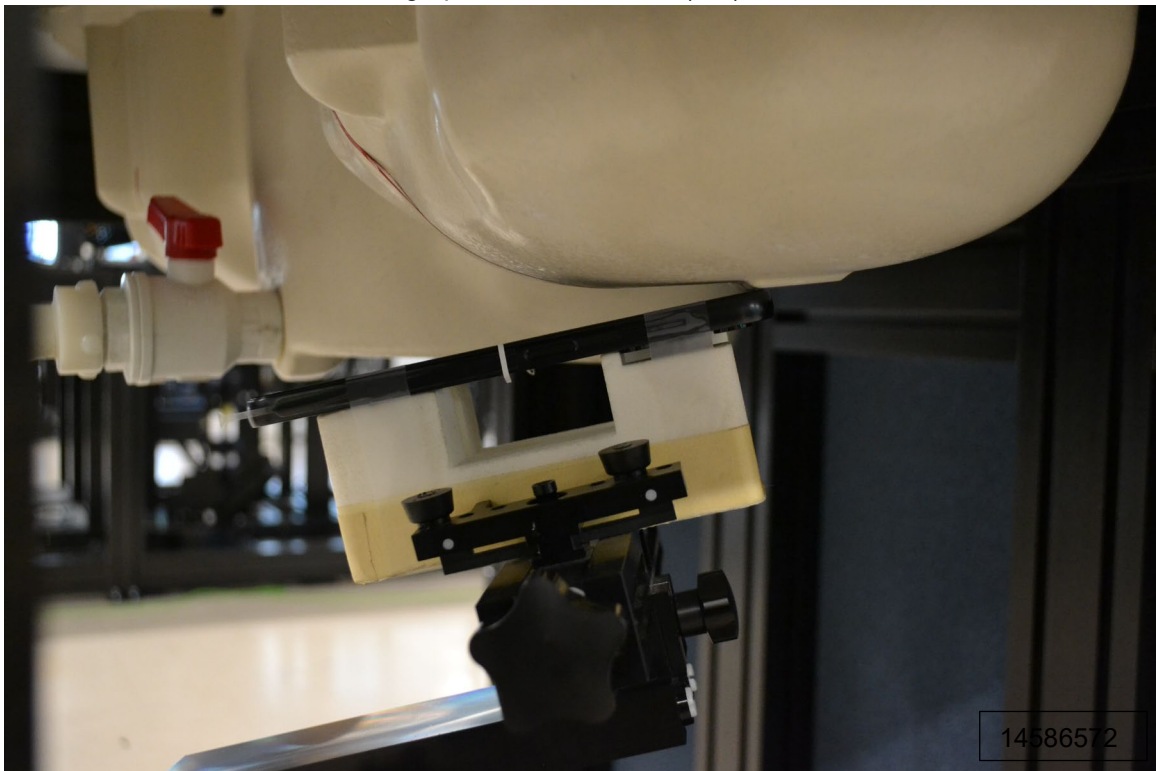


## Head Exposure Conditions

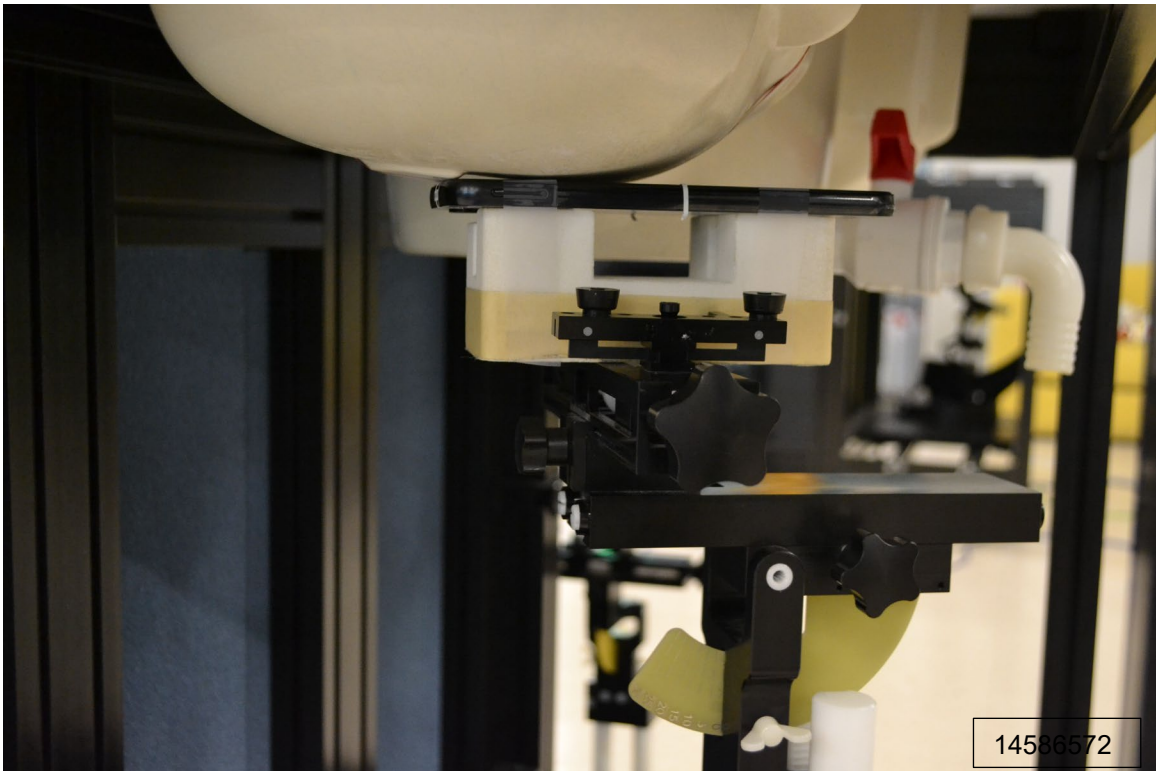
Photograph 5: Head, Left Cheek, 0 mm



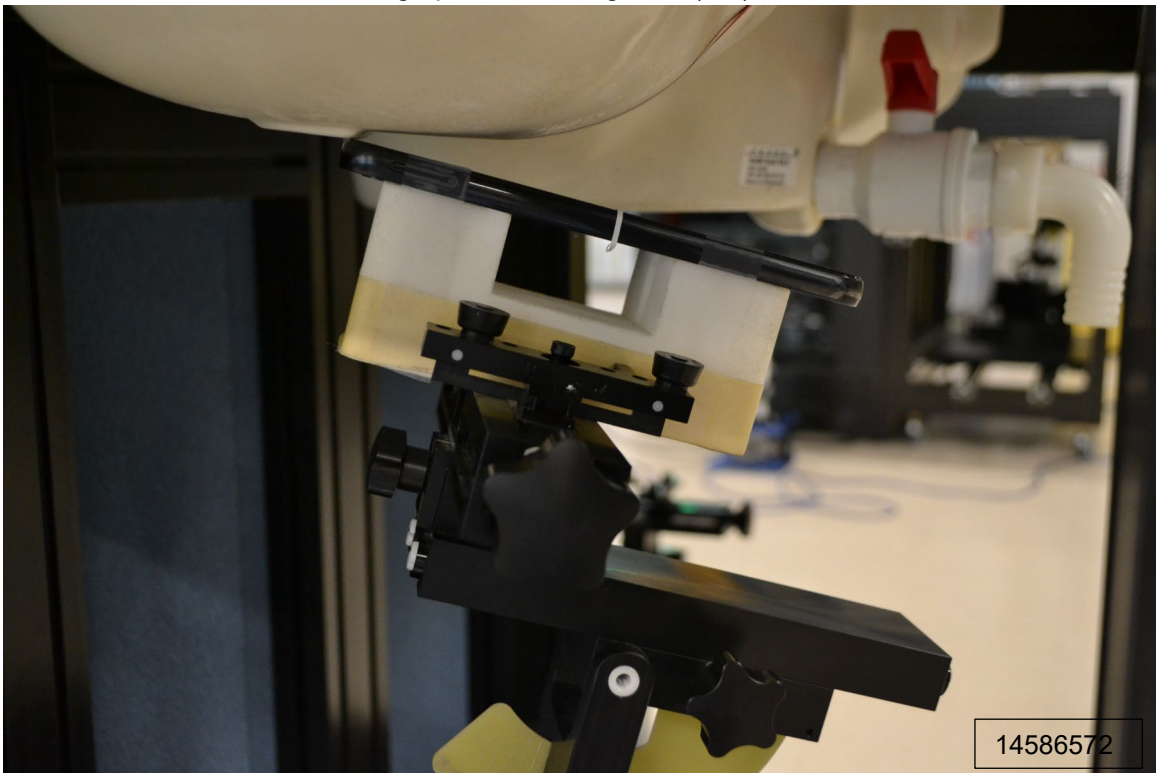
Photograph 6: Head, Left Tilt (15°), 0 mm



Photograph 7: Head, Right Cheek, 0 mm

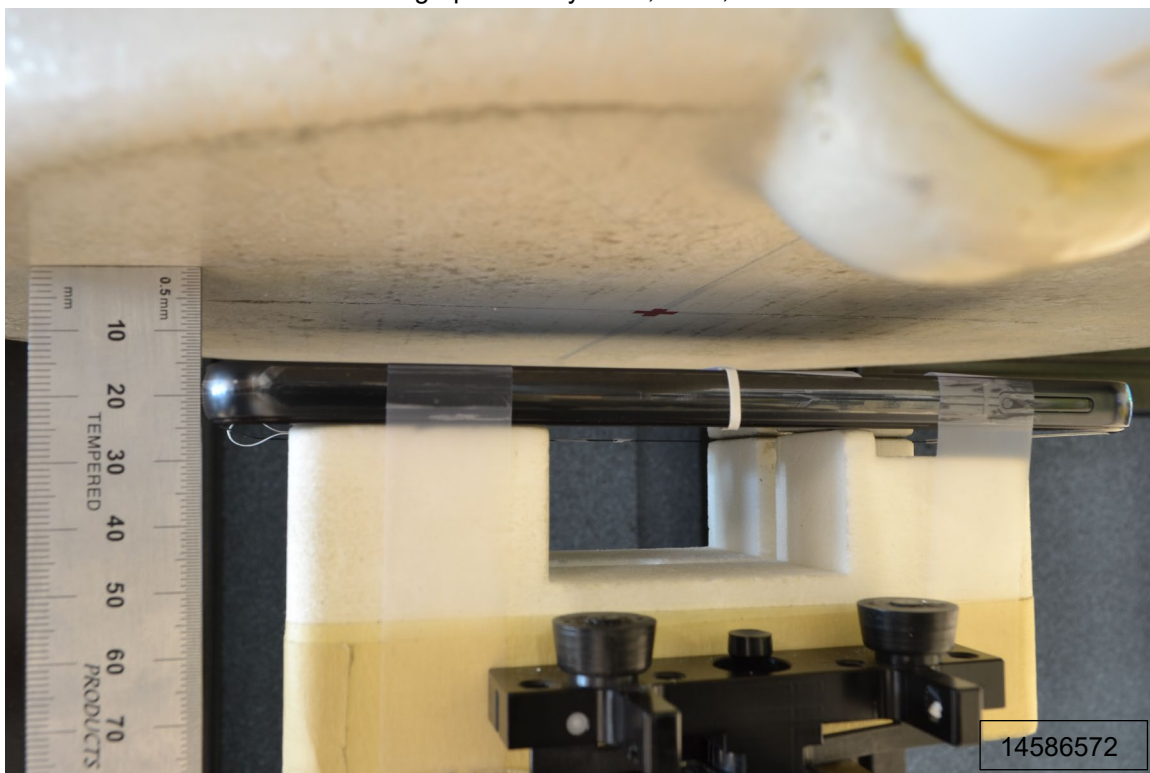


Photograph 8: Head, Right Tilt (15°), 0 mm

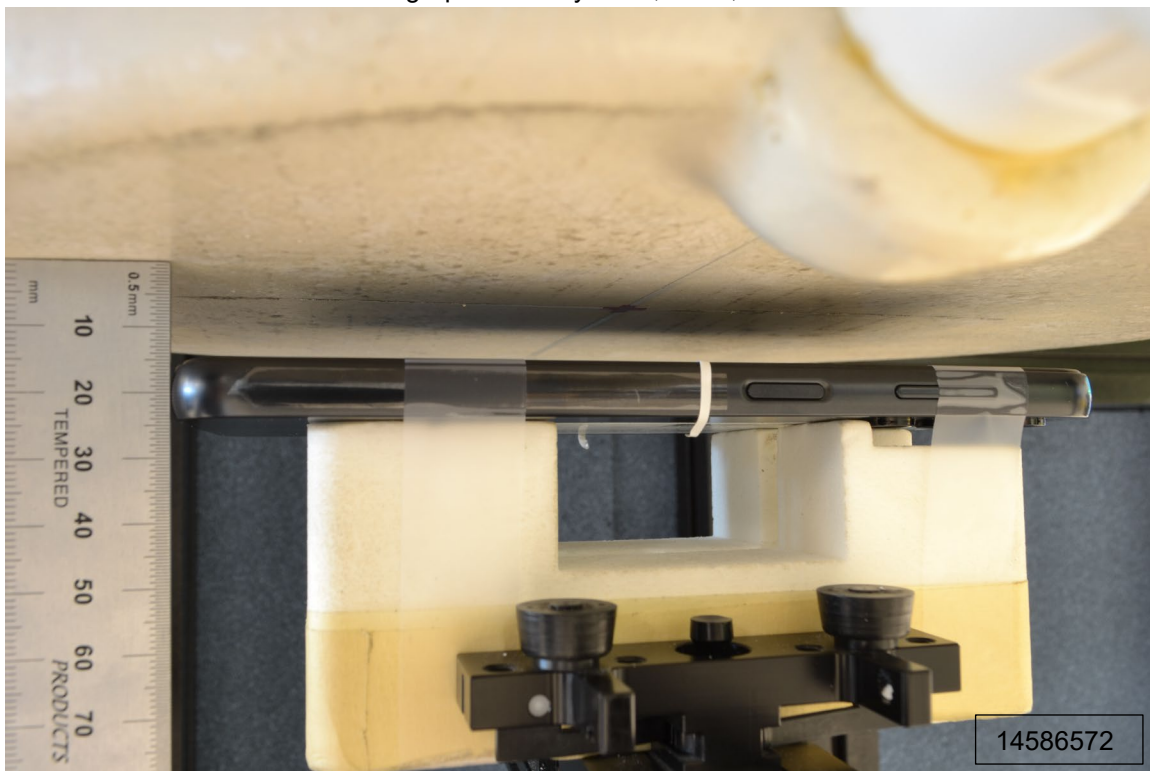


## Body-worn Accessory Exposure Conditions

Photograph 9: Body-worn, Back, 15 mm

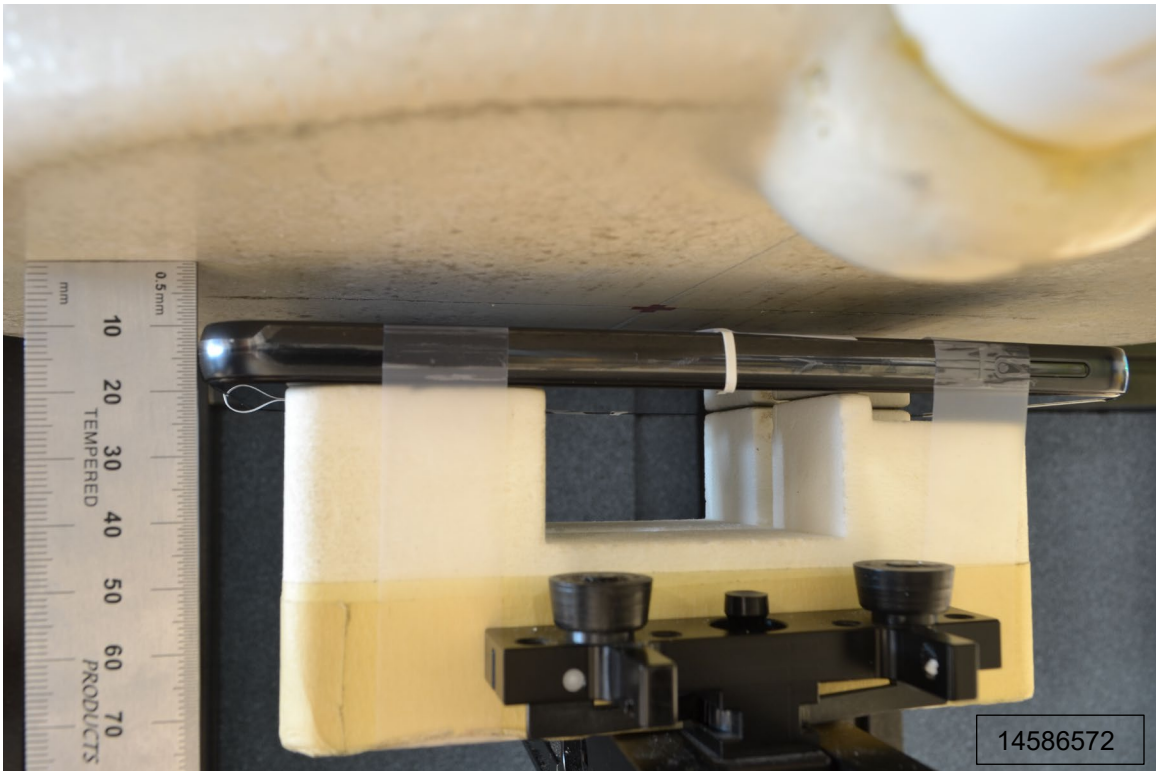


Photograph 10: Body-worn, Front, 15 mm

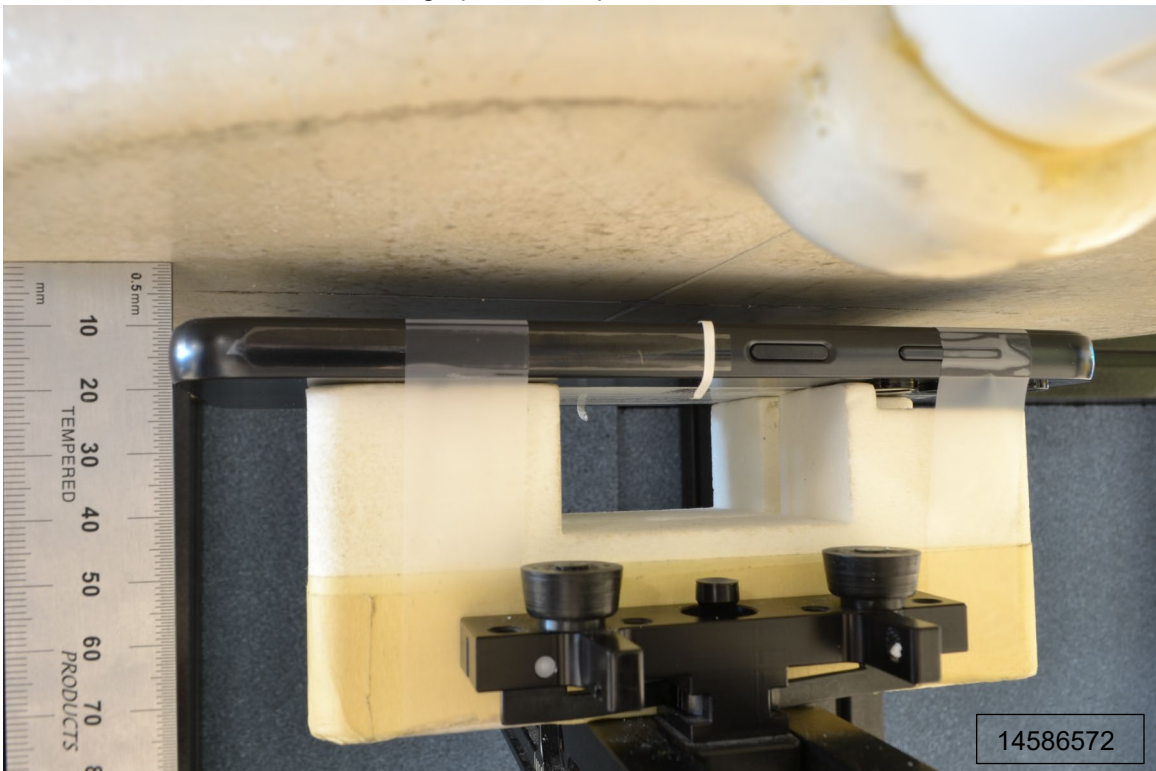


# Hotspot Exposure Conditions

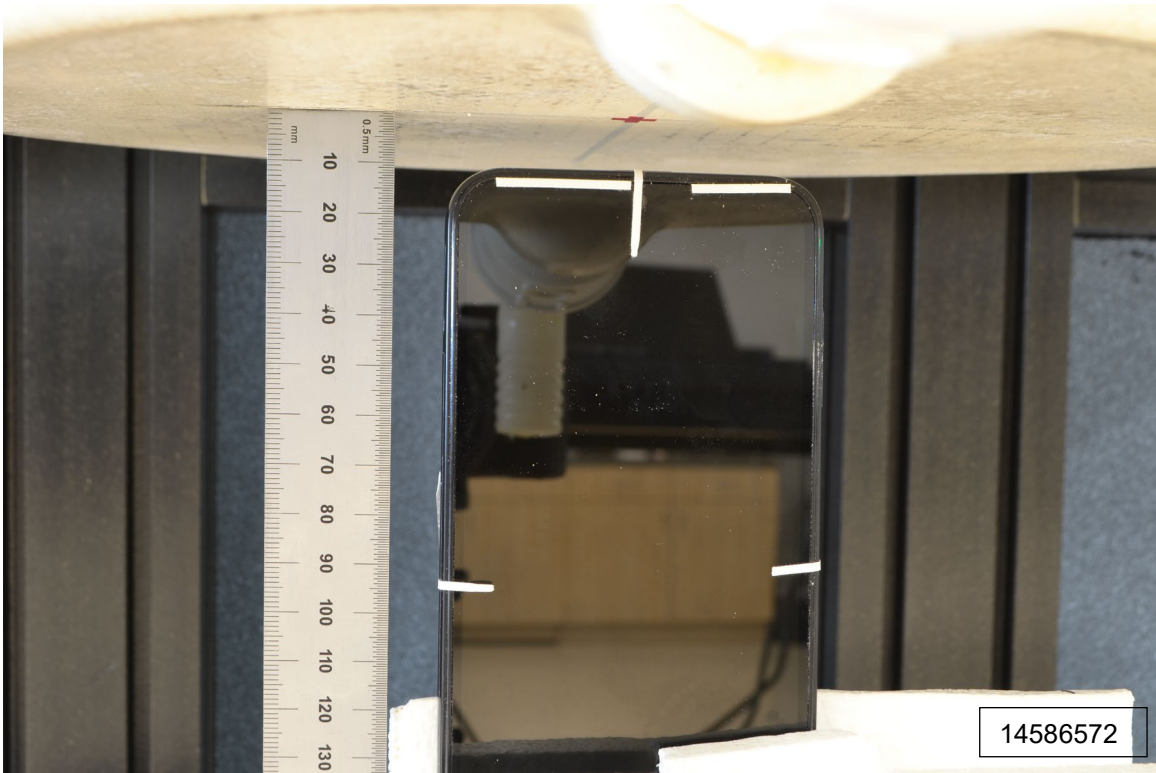
Photograph 11: Hotspot, Back, 10 mm



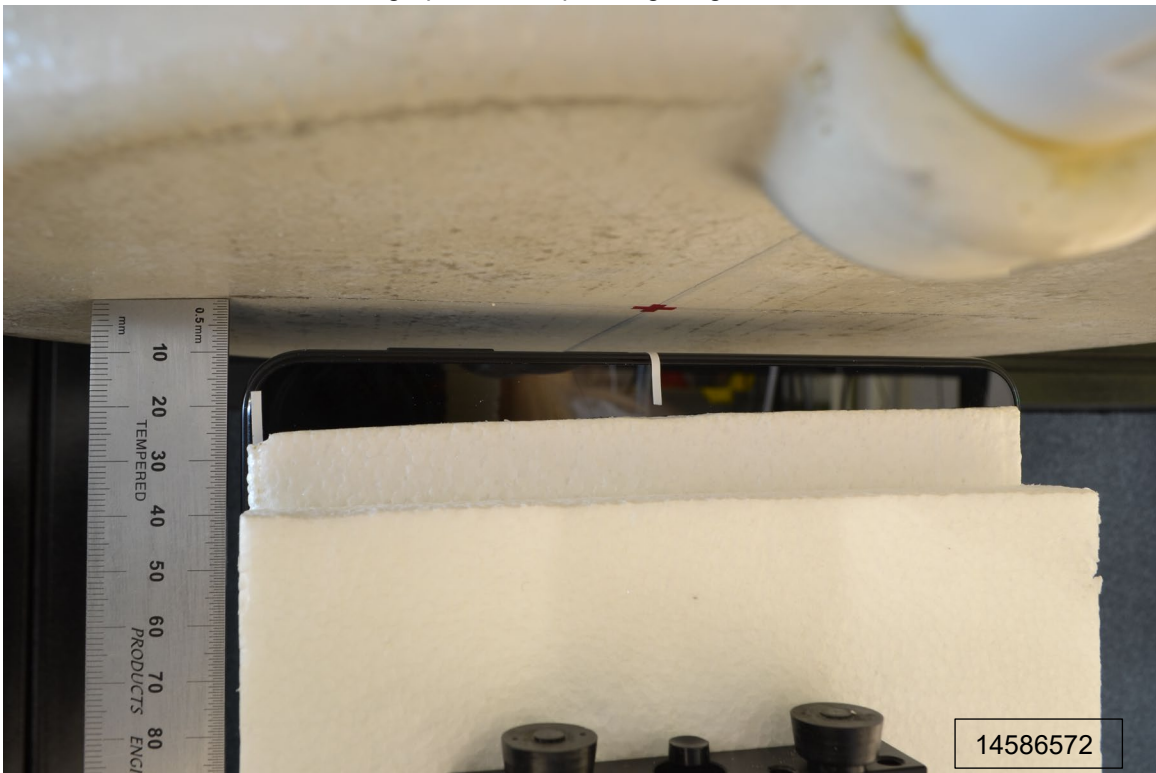
Photograph 12: Hotspot, Front, 10 mm



Photograph 13: Hotspot, Edge Top, 10 mm

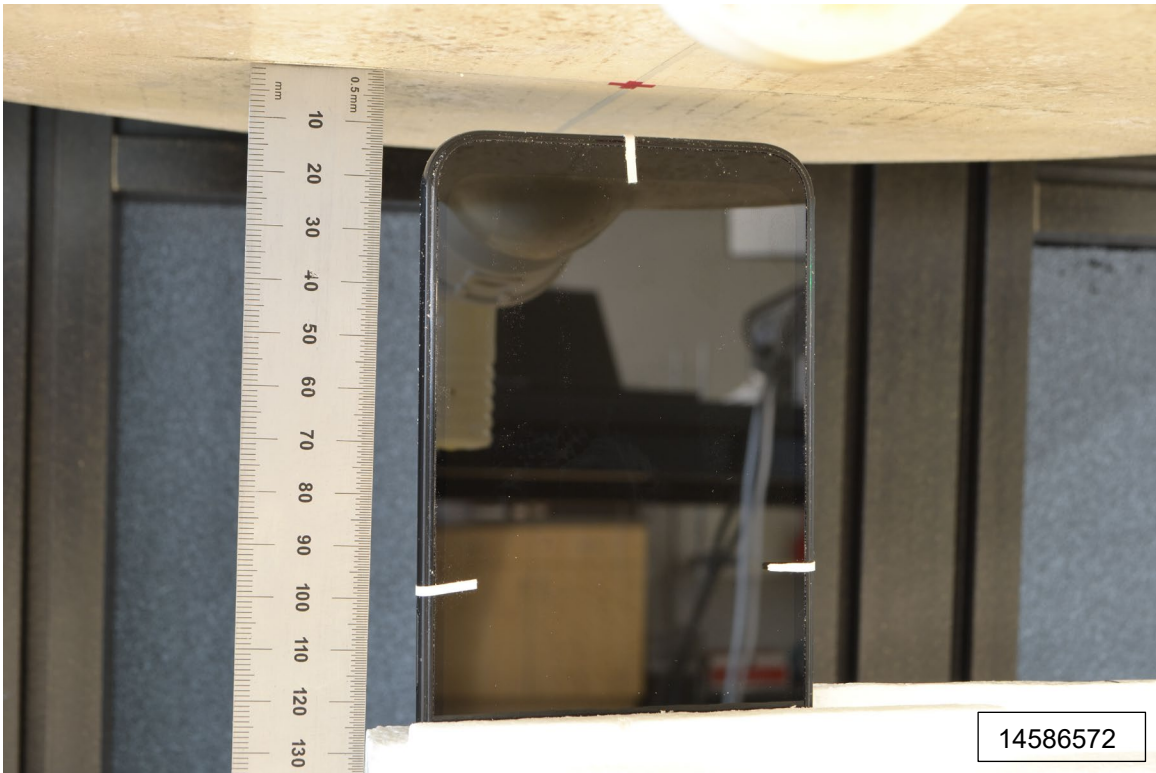


Photograph 14: Hotspot, Edge Right, 10 mm

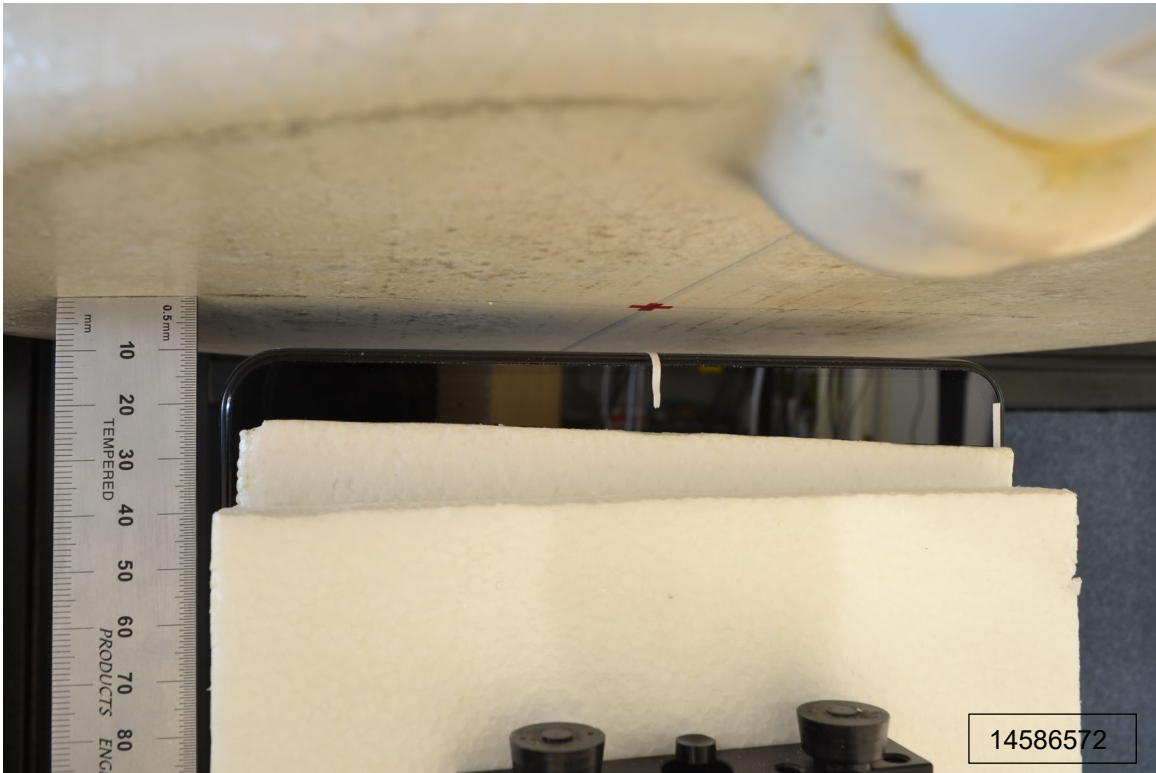




Photograph 15: Hotspot, Edge Bottom, 10 mm

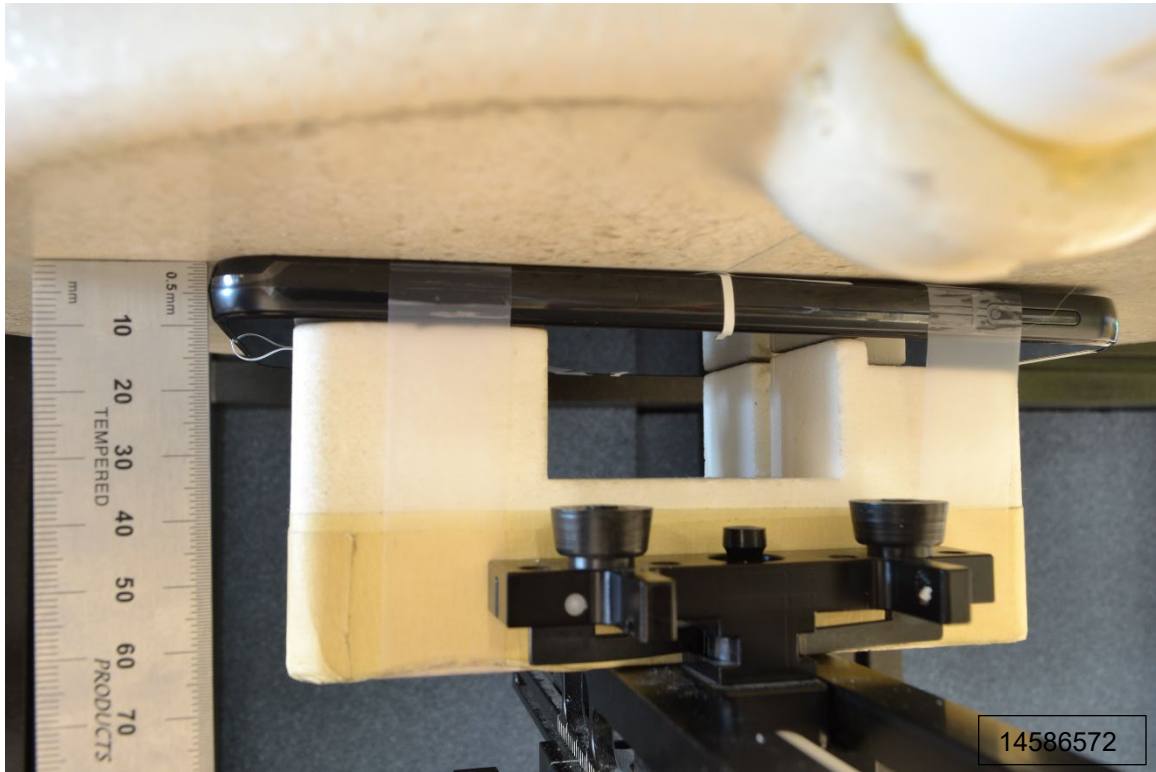


Photograph 16: Hotspot, Edge Left, 10 mm

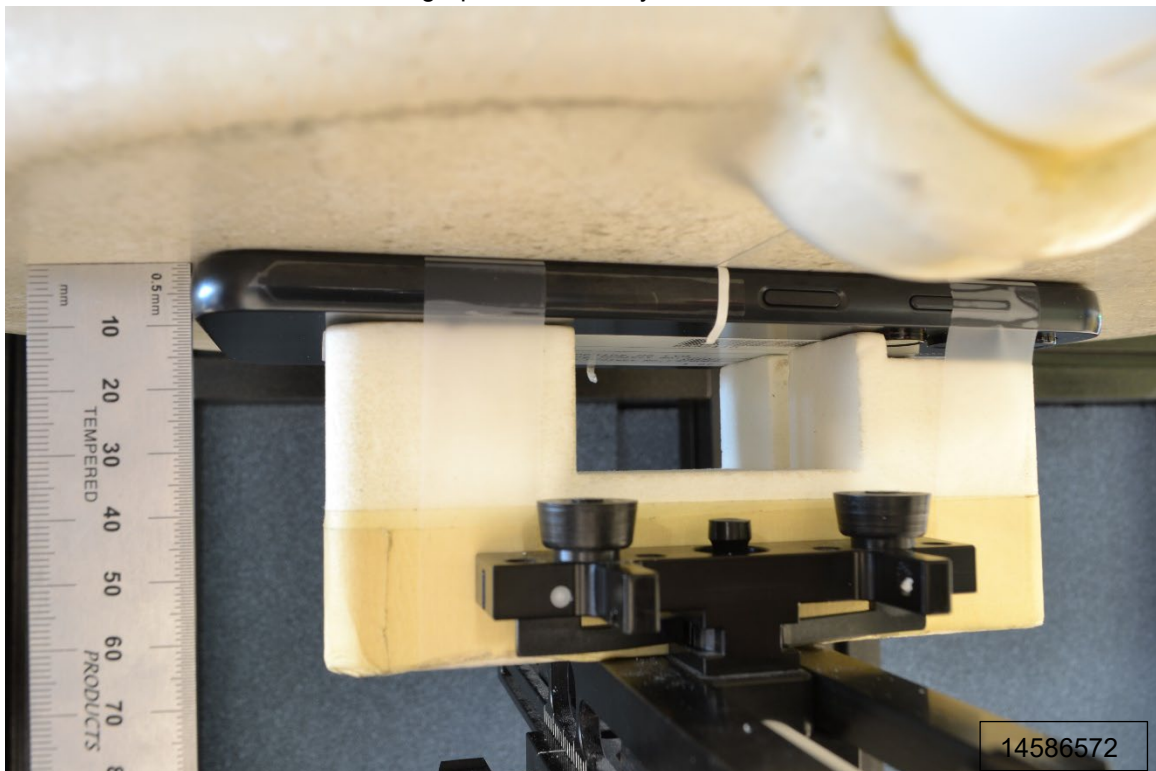


## Extremity Exposure Conditions

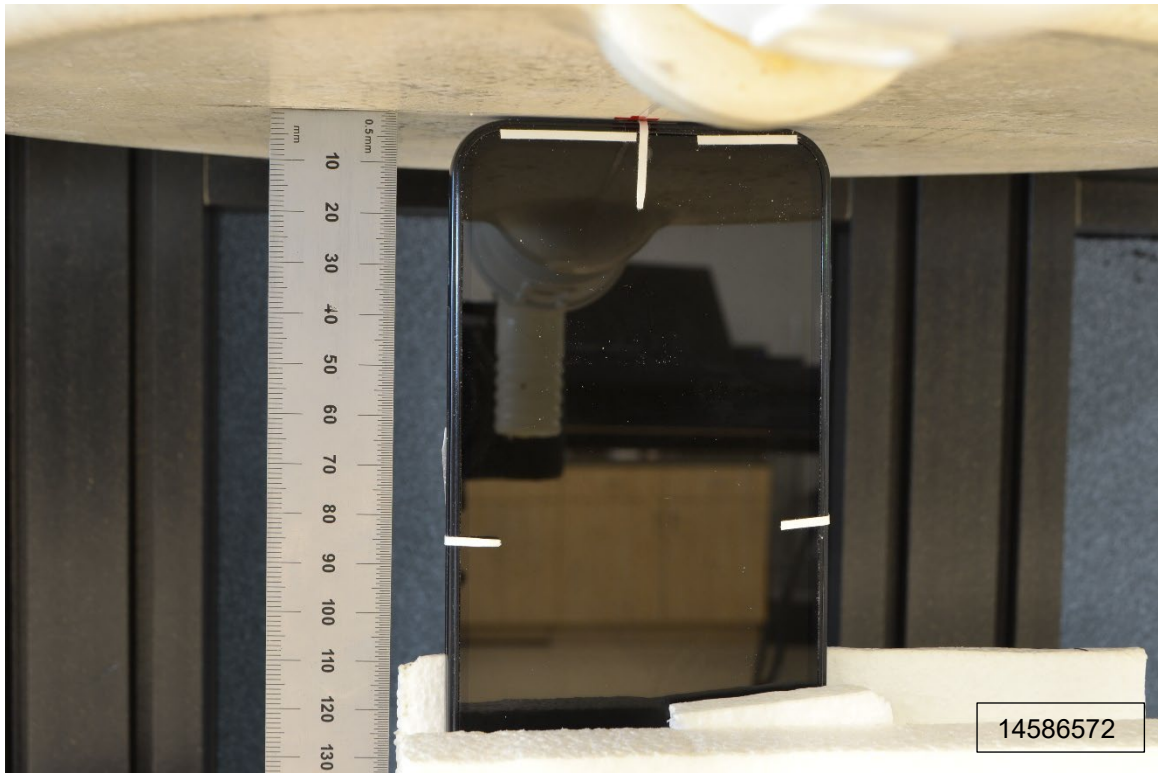
Photograph 17: Extremity, Back, 0 mm



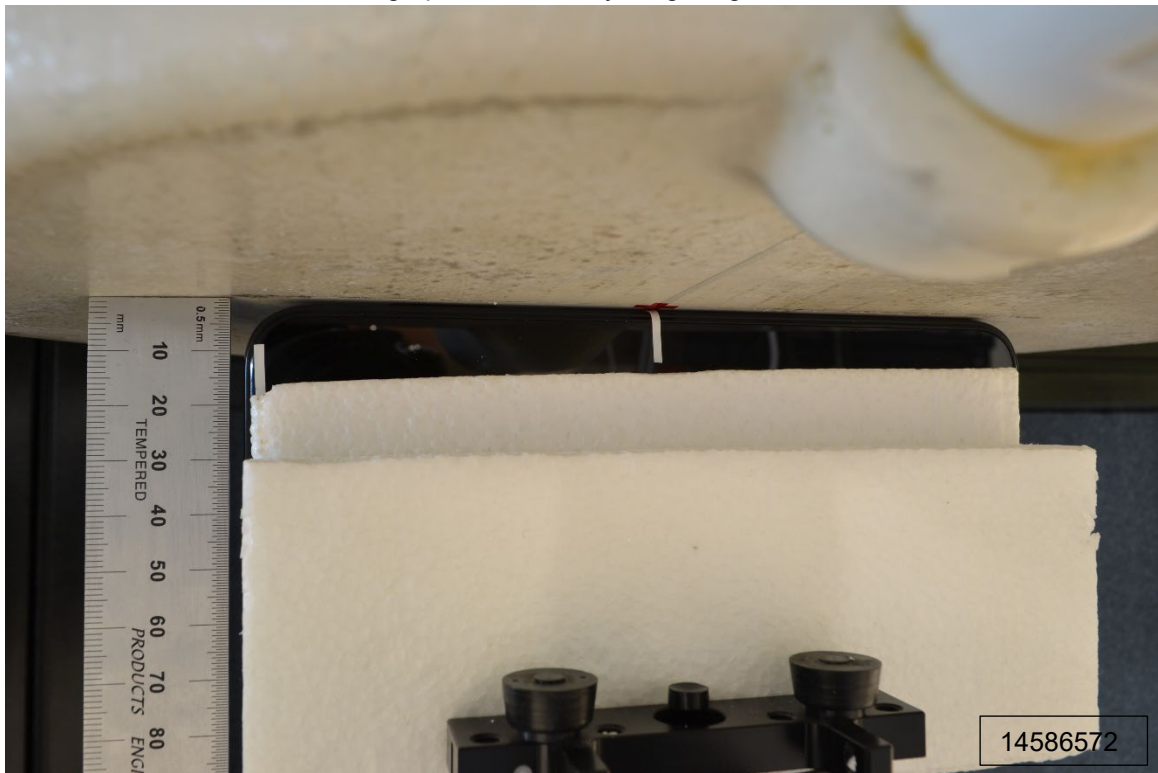
Photograph 18: Extremity, Front, 0 mm



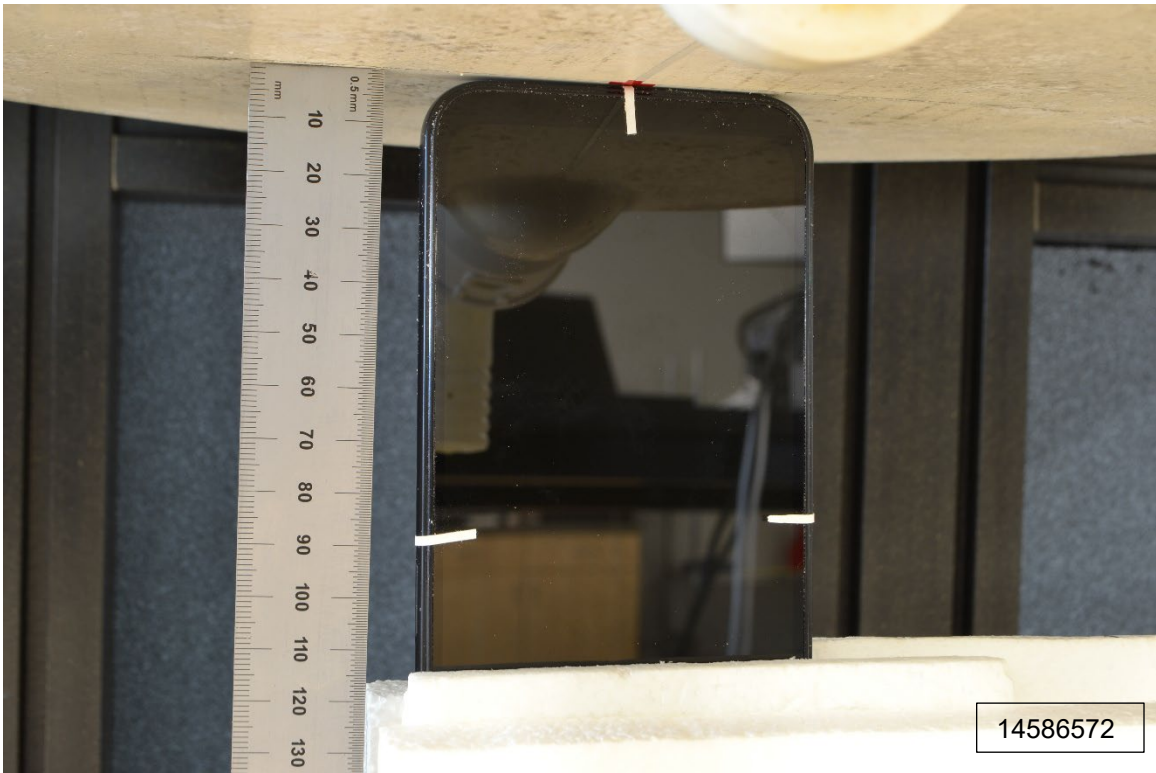
Photograph 19: Extremity, Edge Top, 0 mm



Photograph 20: Extremity, Edge Right, 0 mm



Photograph 21: Extremity, Edge Bottom, 0 mm



Photograph 22: Extremity, Edge Left, 0 mm



# Antenna Dimensions & Separation Distances

- ① WWAN Main Ant 1 (LB)
  - GSM 850
  - W-CDMA BV
  - LTE B5/B12/B13/B17/B26
- ② WWAN Main Ant 2 (MB/HB)
  - GSM 1900
  - W-CDMA BII/BIV
  - LTE B2/4/B41/B66
- ③ WLAN WiFi 2.4G/BT
- ④ WLAN WiFi 5G

