

20230210_SystemPerformancecheck D2450V2 SN960

Frequency: 2450 MHz; Duty Cycle: 1:1; Room Ambient Temperature: 23.0°C; Liquid Temperature: 22.0°C
 Medium parameters used (interpolated): $f = 2450$ MHz; $\sigma = 1.778$ S/m; $\epsilon_r = 38.883$; $\rho = 1000$ kg/m³

DASY5 Configuration:

- Area Scan Setting: Find Secondary Maximum Within: 2.0 dB and with a peak SAR value greater than 0.012W/kg
- Electronics: DAE4 Sn1447; Calibrated: 2022-03-25
- Probe: EX3DV4 - SN7314; ConvF(7.54, 7.54, 7.54) @ 2450 MHz; Calibrated: 2022-05-31
- Sensor-Surface: 1.4mm (Mechanical Surface Detection)
- Phantom: Left_Twin-SAM V8.0 (30deg probe tilt)221014; Type: QD 000 P41 Ax; Serial: xxxx

Head/2450MHz/Pin=100mW/Area Scan (6x8x1): Measurement grid: dx=12mm, dy=12mm
 Maximum value of SAR (measured) = 7.88 W/kg

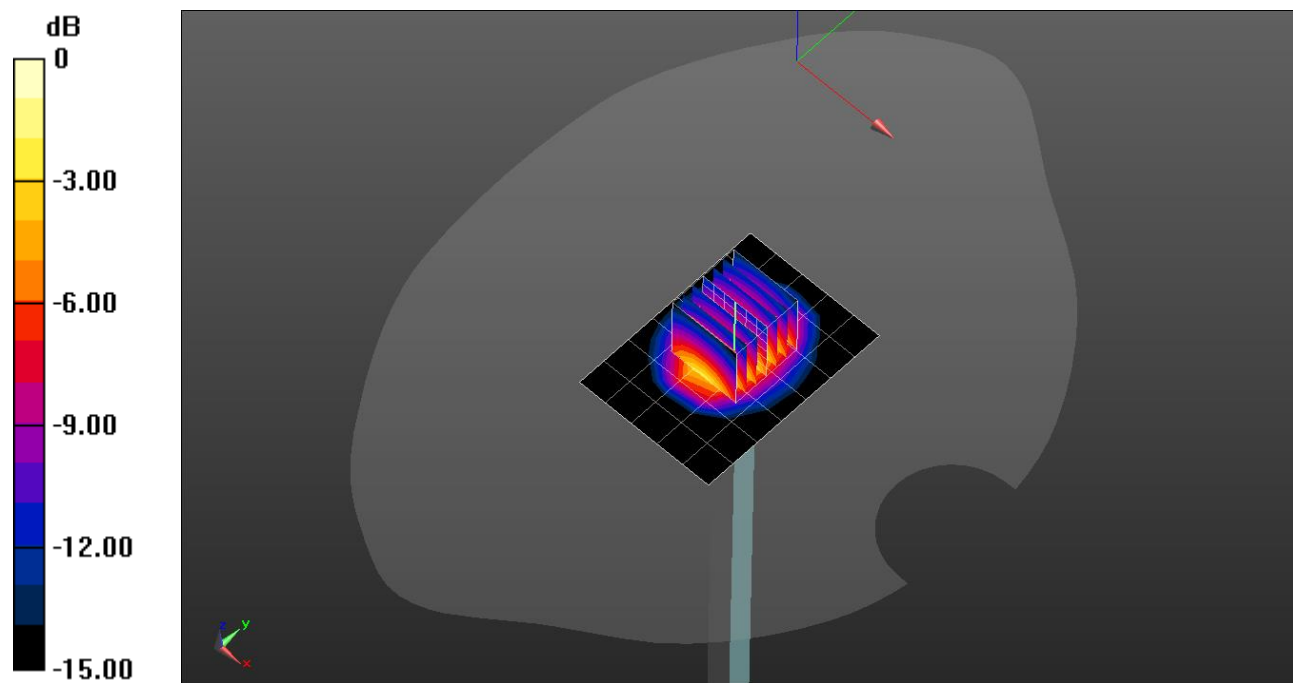
Head/2450MHz/Pin=100mW/Zoom Scan (7x7x7)/Cube 0: Measurement grid: dx=5mm, dy=5mm, dz=5mm

Reference Value = 64.60 V/m; Power Drift = -0.00 dB

Peak SAR (extrapolated) = 11.4 W/kg

SAR(1 g) = 5.43 W/kg; SAR(10 g) = 2.54 W/kg

Maximum value of SAR (measured) = 9.05 W/kg



0 dB = 7.88 W/kg = 8.97 dBW/kg

20230126_SystemPerformanceCheck D5GHzV2 SN 1184

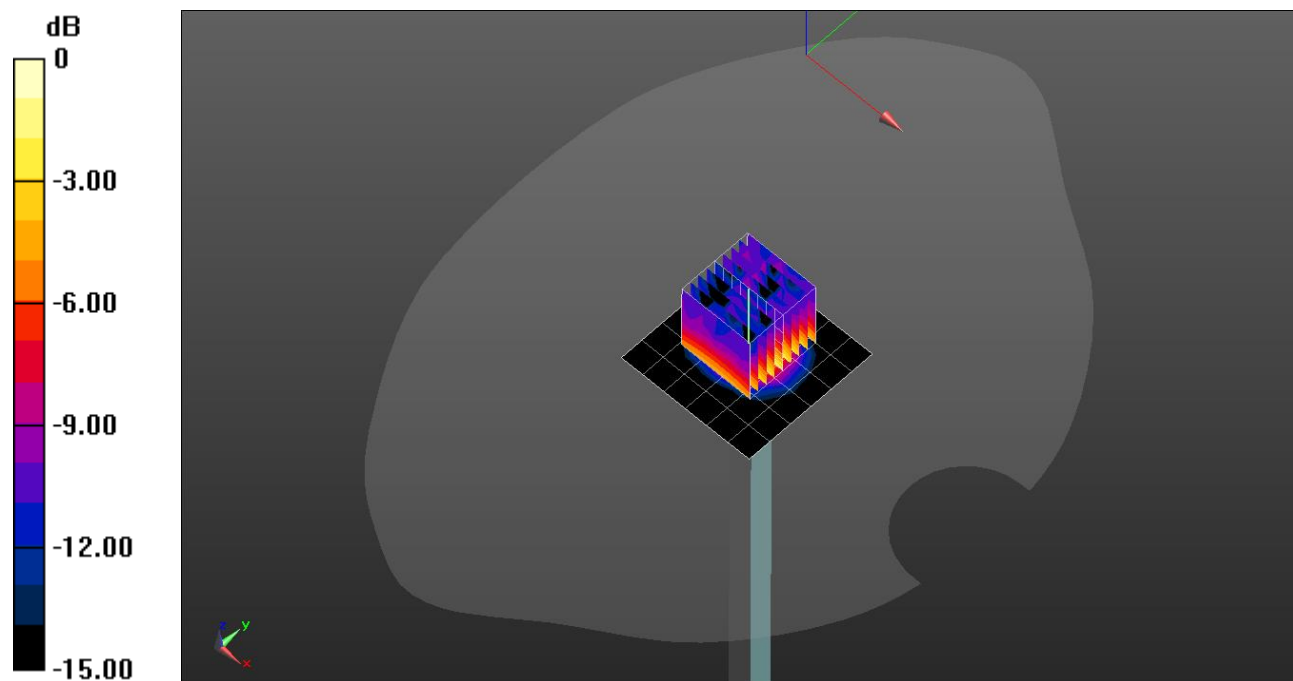
Frequency: 5250 MHz; Duty Cycle: 1:1; Room Ambient Temperature: 23.0°C; Liquid Temperature: 22.0°C
 Medium parameters used (interpolated): $f = 5250$ MHz; $\sigma = 4.83$ S/m; $\epsilon_r = 35.151$; $\rho = 1000$ kg/m³

DASY5 Configuration:

- Area Scan Setting: Find Secondary Maximum Within: 2.0 dB and with a peak SAR value greater than 0.012W/kg
- Electronics: DAE4 Sn1468; Calibrated: 2022-08-18
- Probe: EX3DV4 - SN7645; ConvF(4.92, 4.92, 4.92) @ 5250 MHz; Calibrated: 2022-11-15
- Sensor-Surface: 1.4mm (Mechanical Surface Detection)
- Phantom: Twin-SAM V5.0 (20deg probe tilt); Type: QD 000 P40 CD; Serial: 1751

Head/5.25 GHz, Pin=100mW/Area Scan (7x7x1): Measurement grid: dx=10mm, dy=10mm
 Maximum value of SAR (measured) = 17.5 W/kg

Head/5.25 GHz, Pin=100mW/Zoom Scan (9x9x8)/Cube 0: Measurement grid: dx=4mm, dy=4mm, dz=1.4mm
 Reference Value = 58.51 V/m; Power Drift = 0.13 dB
 Peak SAR (extrapolated) = 34.5 W/kg
SAR(1 g) = 8.45 W/kg; SAR(10 g) = 2.4 W/kg
 Maximum value of SAR (measured) = 20.8 W/kg



0 dB = 17.5 W/kg = 12.43 dBW/kg

Measurement Report for Device, , , UID 0 -, Channel 0 (835.0MHz)

Device under Test Properties

| Model, Manufacturer | Dimensions [mm] | IMEI | DUT Type |
|---------------------|-------------------|------|----------|
| Device, | 50.0 x 10.0 x 8.0 | | Phone |

Exposure Conditions

| Phantom Section, TSL | Position, Test Distance [mm] | Band | Group, UID | Frequency [MHz], Channel Number | Conversion Factor | TSL Conductivity [S/m] | TSL Permittivity |
|----------------------|------------------------------|------|------------|---------------------------------|-------------------|------------------------|------------------|
| Flat, HSL | , | | , 0-- | 835.0, 0 | 10.3 | 0.932 | 41.9 |

Hardware Setup

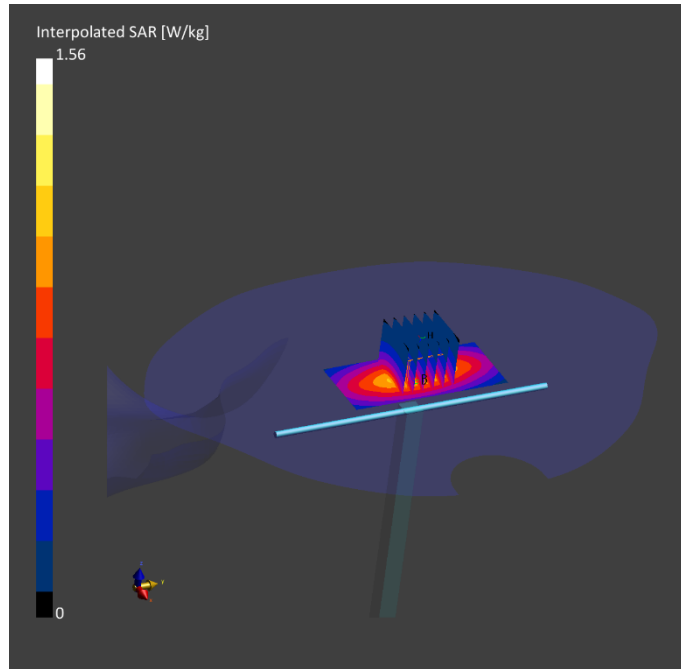
| Phantom | TSL, Measured Date | Probe, Calibration Date | DAE, Calibration Date |
|---|---|-----------------------------|-------------------------|
| Twin-SAM V8.0 (30deg probe tilt) - 2043 | HBBL-600-10000 Charge:xxxx, 2022-Dec-20 | EX3DV4 - SN7646, 2022-03-29 | DAE4 Sn1494, 2022-07-18 |

Scan Setup

| | Area Scan | Zoom Scan |
|---------------------|-------------|--------------------|
| Grid Extents [mm] | 40.0 x 90.0 | 30.0 x 30.0 x 30.0 |
| Grid Steps [mm] | 10.0 x 15.0 | 6.0 x 6.0 x 1.5 |
| Sensor Surface [mm] | 3.0 | 1.4 |

Measurement Results

| | Area Scan | Zoom Scan |
|------------------|------------|------------|
| Date | 2022-12-20 | 2022-12-20 |
| psSAR1g [W/kg] | 0.987 | 0.993 |
| psSAR10g [W/kg] | 0.649 | 0.652 |
| Power Drift [dB] | | -0.03 |



Measurement Report for Device, , , UID 0 -, Channel 0 (1900.0MHz)

Device under Test Properties

| Model, Manufacturer | Dimensions [mm] | IMEI | DUT Type |
|---------------------|-------------------|------|----------|
| Device, | 50.0 x 10.0 x 8.0 | | Phone |

Exposure Conditions

| Phantom Section, TSL | Position, Test Distance [mm] | Band | Group, UID | Frequency [MHz], Channel Number | Conversion Factor | TSL Conductivity [S/m] | TSL Permittivity |
|----------------------|------------------------------|------|------------|---------------------------------|-------------------|------------------------|------------------|
| Flat, HSL | , | | , 0-- | 1900.0, 0 | 8.57 | 1.43 | 40.9 |

Hardware Setup

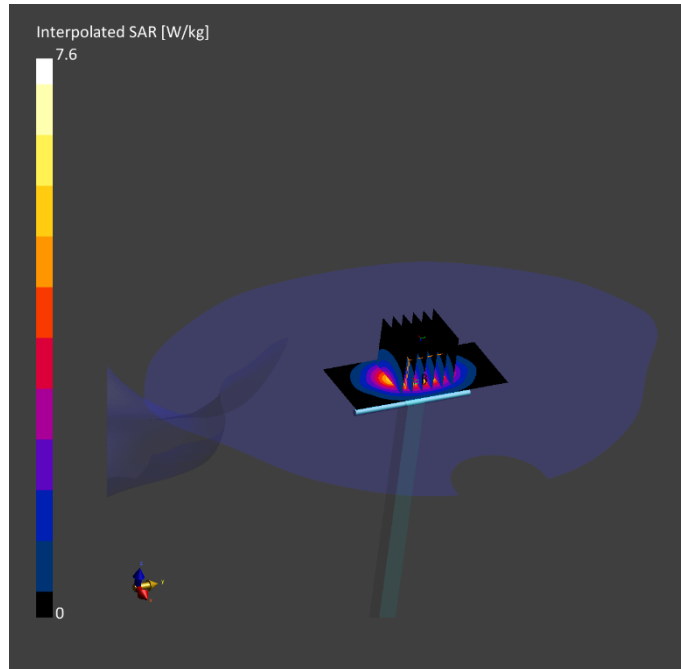
| Phantom | TSL, Measured Date | Probe, Calibration Date | DAE, Calibration Date |
|---|---|-----------------------------|-------------------------|
| Twin-SAM V8.0 (30deg probe tilt) - 2043 | HBBL-600-10000 Charge:xxxx, 2022-Dec-20 | EX3DV4 - SN7646, 2022-03-29 | DAE4 Sn1494, 2022-07-18 |

Scan Setup

| | Area Scan | Zoom Scan |
|---------------------|-------------|--------------------|
| Grid Extents [mm] | 40.0 x 90.0 | 30.0 x 30.0 x 30.0 |
| Grid Steps [mm] | 10.0 x 15.0 | 6.0 x 6.0 x 1.5 |
| Sensor Surface [mm] | 3.0 | 1.4 |

Measurement Results

| | Area Scan | Zoom Scan |
|------------------|------------|------------|
| Date | 2022-12-20 | 2022-12-20 |
| psSAR1g [W/kg] | 4.06 | 3.93 |
| psSAR10g [W/kg] | 2.10 | 2.03 |
| Power Drift [dB] | | -0.04 |



Measurement Report for Device, , , UID 0 -, Channel 0 (2600.0MHz)

Device under Test Properties

| Model, Manufacturer | Dimensions [mm] | IMEI | DUT Type |
|---------------------|-------------------|------|----------|
| Device, | 50.0 x 10.0 x 8.0 | | Phone |

Exposure Conditions

| Phantom Section, TSL | Position, Test Distance [mm] | Band | Group, UID | Frequency [MHz], Channel Number | Conversion Factor | TSL Conductivity [S/m] | TSL Permittivity |
|----------------------|------------------------------|------|------------|---------------------------------|-------------------|------------------------|------------------|
| Flat, HSL | , | | , 0-- | 2600.0, 0 | 8.16 | 1.89 | 40.6 |

Hardware Setup

| Phantom | TSL, Measured Date | Probe, Calibration Date | DAE, Calibration Date |
|---|---|-----------------------------|-------------------------|
| Twin-SAM V8.0 (30deg probe tilt) - 2043 | HBBL-600-10000 Charge:xxxx, 2022-Dec-26 | EX3DV4 - SN7646, 2022-03-29 | DAE4 Sn1494, 2022-07-18 |

Scan Setup

| | Area Scan | Zoom Scan |
|---------------------|-------------|--------------------|
| Grid Extents [mm] | 40.0 x 80.0 | 30.0 x 30.0 x 30.0 |
| Grid Steps [mm] | 10.0 x 10.0 | 5.0 x 5.0 x 1.5 |
| Sensor Surface [mm] | 3.0 | 1.4 |

Measurement Results

| | Area Scan | Zoom Scan |
|------------------|------------|------------|
| Date | 2022-12-26 | 2022-12-26 |
| psSAR1g [W/kg] | 5.99 | 5.87 |
| psSAR10g [W/kg] | 2.69 | 2.65 |
| Power Drift [dB] | | -0.00 |

