

SAMSUNG

SM-A135F/DSN

QUICK START GUIDE

► To view the user manual, scan the QR code.



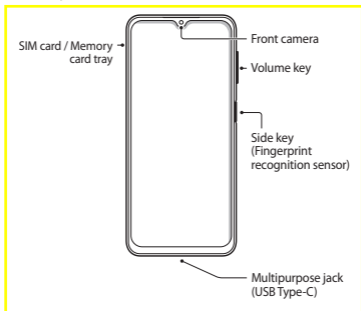
Package contents

- Device
- USB cable
- Ejection pin
- Quick start guide

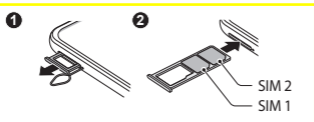


The items supplied with the device and their images may vary by region.

Device layout



Installing a nano-SIM card (sold separately)



Accessing more information

Visit www.samsung.com to view device information and more. To view the user manual, scan the QR code on the front cover. You may incur additional charges for accessing the Internet.

Safety information

Read all safety information before using the device to ensure safe and proper use. You can view more safety information in the safety information menu of the Settings app.

Follow the warnings below to prevent incidents, such as fires or explosions, injuries, or damage to the device

- Your device contains magnets. Keep a safe distance between your device and objects that may be affected by magnets such as credit cards and implantable medical devices. If you have an implantable medical device, consult your physician before use.
- Do not expose the device to physical impact or damage.
- Use only Samsung-approved batteries, chargers, and cables specifically designed for your device.
- Prevent the multipurpose jack and battery terminals from coming into contact with foreign materials such as metal, liquids, or dust.
- If any part of the device, such as the glass or acrylic body, is broken, smokes, or emits a burning odor, stop using the device immediately. Use the device again only after it has been repaired at a Samsung Service Centre.
- Do not turn on or use the device when the battery compartment is exposed.
- Do not disassemble or reuse the battery.
- The device can be used in locations with an ambient temperature of 0 °C to 35 °C. You can store the device at an ambient temperature of -20 °C to 50 °C. Using or storing the device outside of the recommended temperature ranges may damage the device or reduce the battery's lifespan.



To prevent possible hearing damage when using a headset, do not listen to sound at high volume for long periods.



This marking on the product, accessories or literature and without the bar on batteries indicates that the product, battery and its electronic accessories (e.g. charger, headset, USB cable) should not be disposed of with other household waste.

- For information on Samsung's environmental commitments and product regulatory obligations, e.g. REACH, visit our sustainability page available via www.samsung.com.

Specific Absorption Rate (SAR) certification information

Your mobile is designed not to exceed the limits for exposure to radio waves recommended by international guidelines.

SAR values for European countries: The SAR values below are only for devices developed for use in European countries.

Maximum SAR for this model and conditions under which it was recorded

Head SAR	X.XXX W/kg
----------	------------

Body-worn SAR	X.XXX W/kg
---------------	------------

Limb SAR	X.XXX W/kg
----------	------------

Body-worn SAR testing has been carried out at a separation distance of 0.5 cm. To meet RF exposure guidelines during body-worn operation, the device should be positioned at least this distance away from the body.

For SAR values for all other countries: For SAR values specific to your model, visit www.samsung.com/sar and search for your region and device with the model number.

Band and mode	Output power
EGSM900	33 dBm
DCS1800	30 dBm
WCDMA 900/2100	24 dBm
LTE 1/3/7/8/20/28/38/40	23 dBm
Wi-Fi 2.4 GHz	20 dBm
Wi-Fi 5.1–5.7 GHz	23 dBm
Wi-Fi 5.8 GHz	25 mW
Bluetooth 2.4 GHz	20 dBm
NFC 13.56 MHz	42 dB μ A/m at 10 m

The use of the WLAN band is restricted to indoor use only. This restriction is applicable in: AT, BE, BG, CH, CY, CZ, DE, DK, EE, ES, EL, FI, FR, HR, HU, IE, IS, IT, LI, LT, LU, LV, MT, NL, NO, PL, PT, RO, SE, SI, SK, TR, UK(NI), GB.

Declaration of Conformity

Samsung declares that this device is in compliance with Directive 2014/53/EU and with the relevant UK statutory requirements. Go to www.samsung.com/mobile_doc to view the Declaration of Conformity.

Removing the battery

- To remove the battery, contact an authorised service centre. To obtain battery removal instructions, please visit www.samsung.com/global/ecodesign_energy.
- For your safety, you must not attempt to remove the battery. If the battery is not properly removed, it may lead to damage to the battery and device, cause personal injury, and/or result in the device being unsafe.
- Samsung does not accept liability for any damage or loss (whether in contract or tort, including negligence) which may arise from failure to precisely follow these warnings and instructions, other than death or personal injury caused by Samsung's negligence.

If your device is frozen and unresponsive, press and hold the Side key and the Volume Down key simultaneously for more than 7 seconds to restart it.

It is recommended not to use fixed graphics on part or all of the touchscreen for extended periods. Doing so may result in afterimages (screen burn-in) or ghosting.

Short Form Warranty Statement

1. This warranty applies to Samsung products first purchased by an end user in one of the countries listed in point 6 below. Customers who purchased this product from Samsung or its authorized distributors in the United Kingdom, Republic of Ireland, France, Belgium, Netherlands, Luxembourg, Greece, Cyprus, Hungary, Latvia, Norway, Spain or Sweden should also refer to the separate warranty card enclosed in the box. In the event of a conflict between the Quick Start Guide and the warranty card the terms in the warranty card will apply.
2. Samsung Electronics Co. Ltd. (Samsung) warrants this product as free of defects in material, design and workmanship for a period of 24 months from the first retail purchase or delivery. This period is reduced to 12 months for batteries (where legally permissible). Repairs of the product under this warranty (with or without replacement of parts) does not lead to an extension or restart of the warranty period. This statement is subject to the full terms of the warranty, shown at samsung.com/support/warranty.
3. This warranty does not affect (and is provided in addition to) any consumer statutory rights or contractual rights that apply against the seller of the product. This warranty does not cover defects caused by normal wear and tear, misuse of the product, or damage to the product. Proof of purchase and the serial number of the product are required.
4. Products may be repaired, replaced or refunded under this warranty at Samsung's discretion. We recommend that you back-up your device as data may be deleted in the course of repair.
5. To obtain warranty service, please contact Samsung or a Samsung Authorised Service Centre. [Contact information available at samsung.com/support/contact]
6. Samsung operates a pan-European warranty, which means that you can obtain service under this warranty from Samsung or a Samsung Authorised Service Centre in any of the following countries: UK, Republic of Ireland, Germany, France, Italy, Malta, Spain, Portugal, The Netherlands, Belgium, Luxembourg, Denmark, Sweden, Finland, Poland, Hungary, Czech republic, Slovakia, Austria, Slovenia, Estonia, Latvia, Lithuania, Greece, Cyprus, Romania, Bulgaria, Switzerland, Norway, Liechtenstein and Croatia. The full local Samsung warranty terms and period applying in the country in question will apply to your claim.