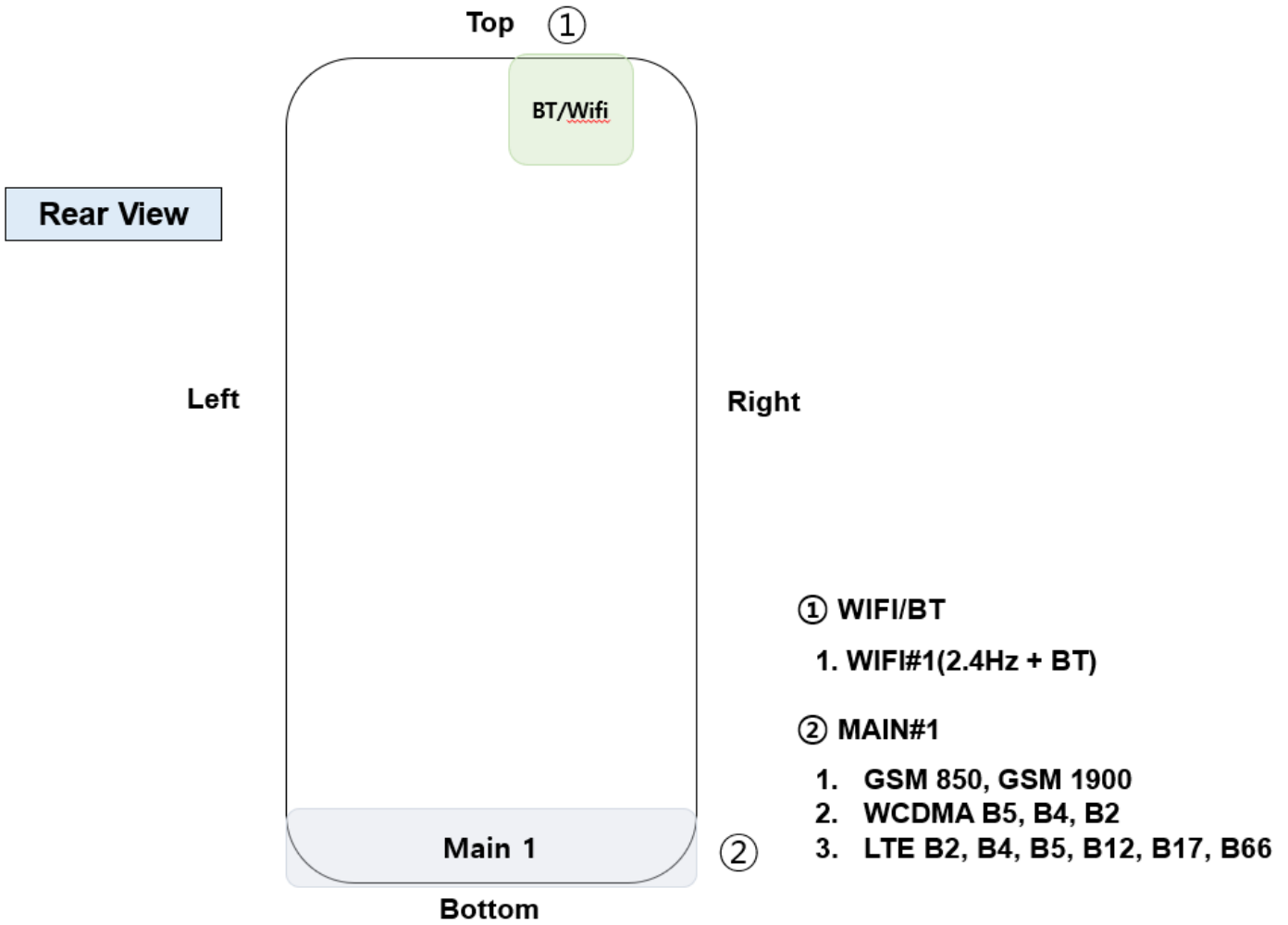
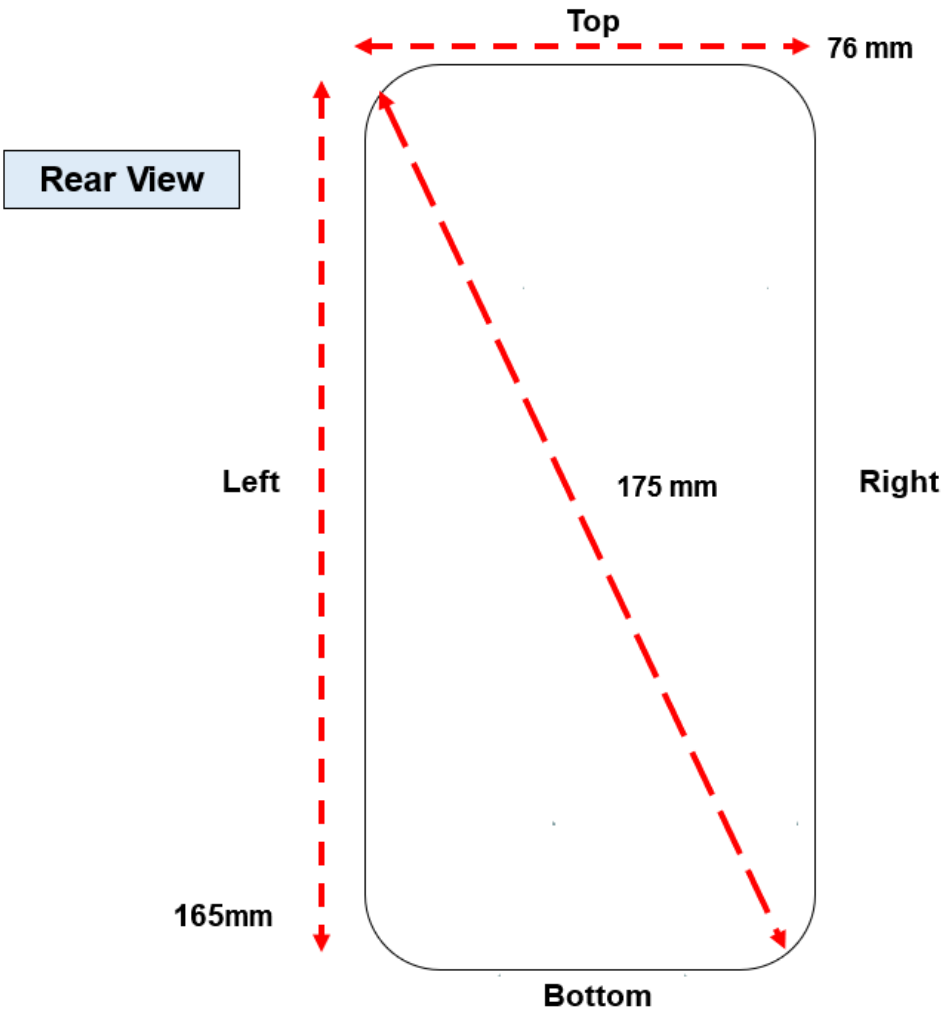


Appendix A

- DUT Antenna Information and SAR Test SETUP PHOTOGRAPHS

- DUT Antenna Information

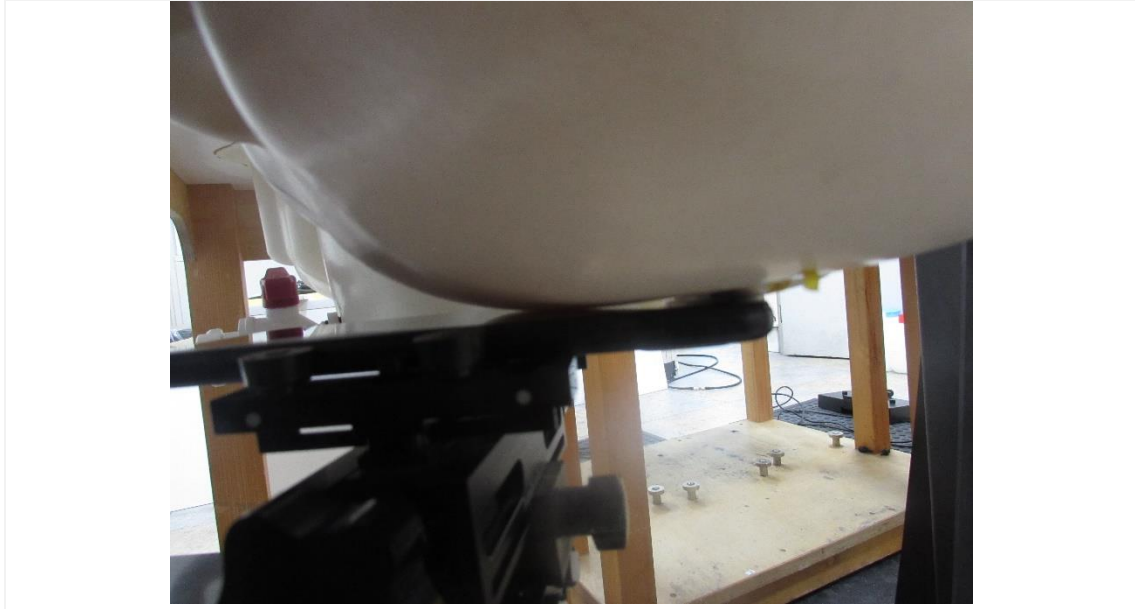




1. Head
1.1 Left All



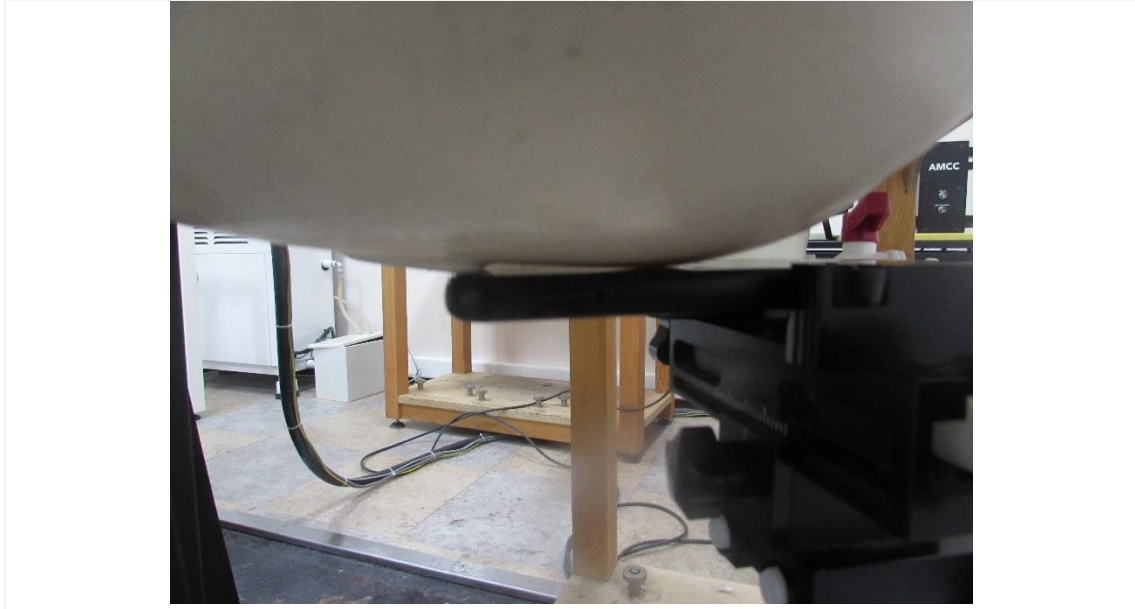
1.2 Left Touch / Left Tilt



1.3 Right All



1.4 Right Touch / Right Tilt

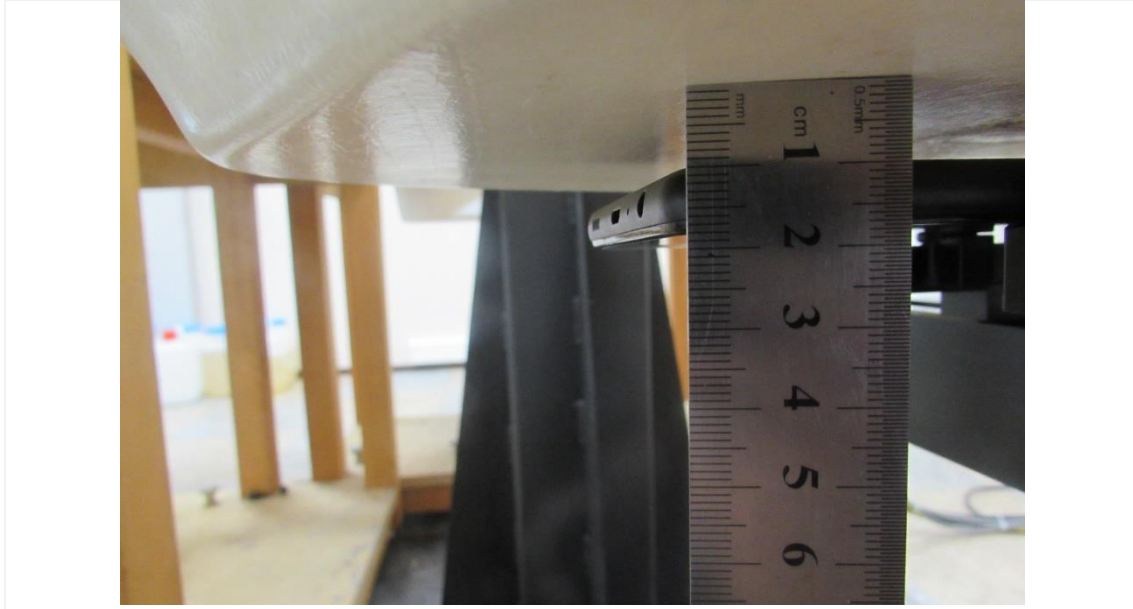


2. Body

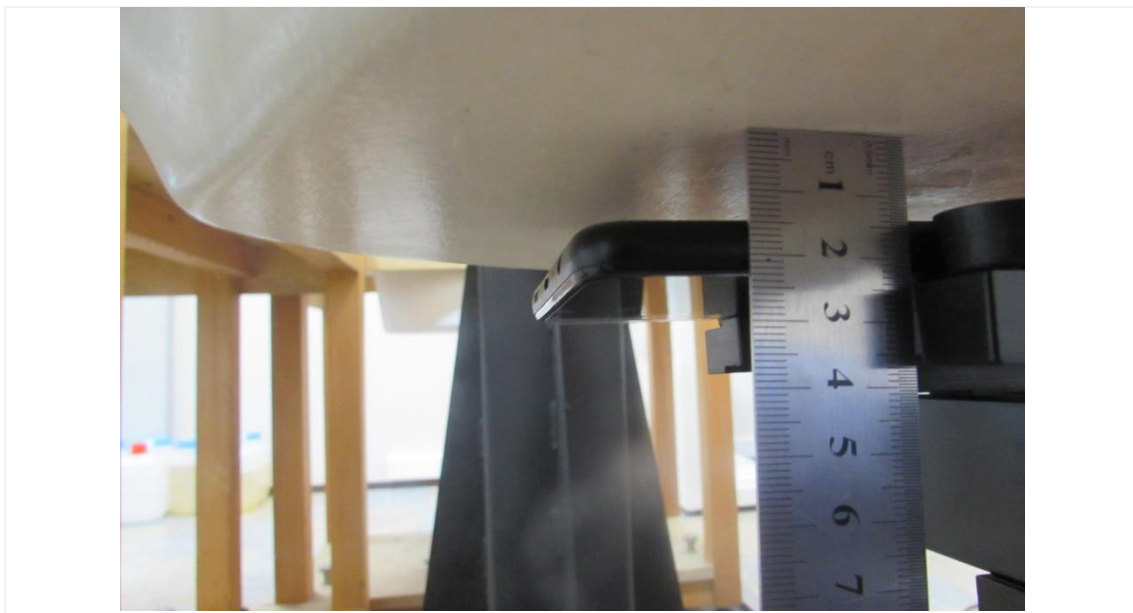
2.1 Body All



2.2 Body Rear

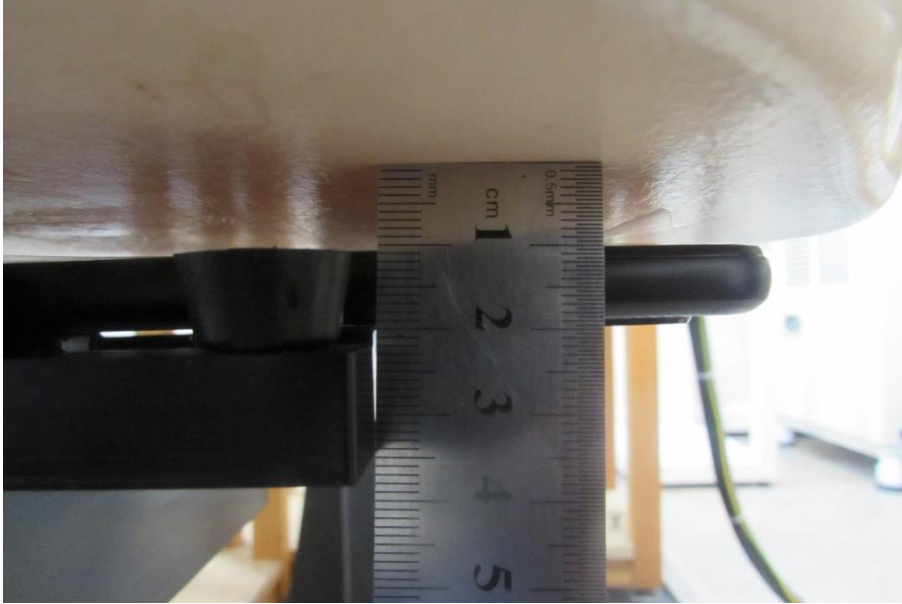


Distance of 10 mm from the EUT

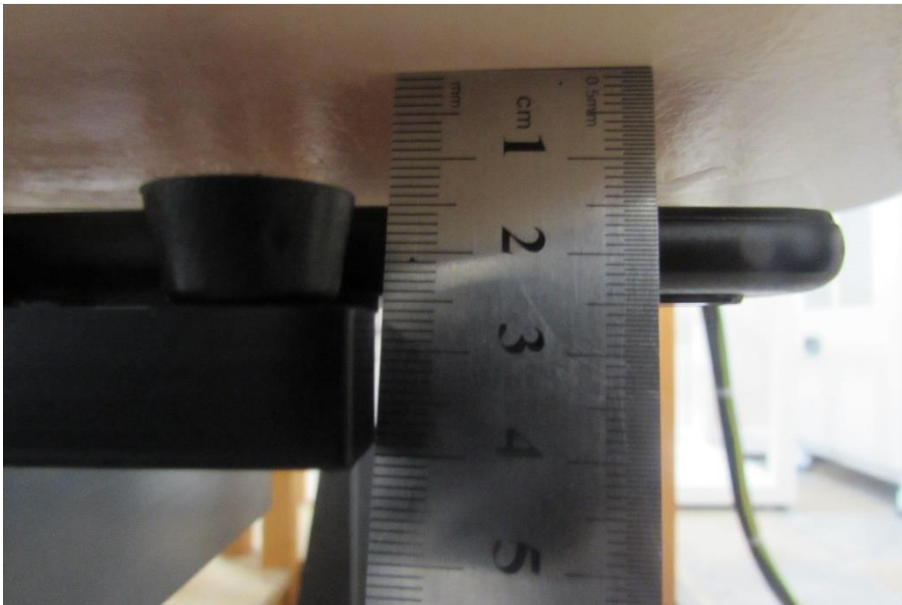


Distance of 15 mm from the EUT

2.3 Body Front

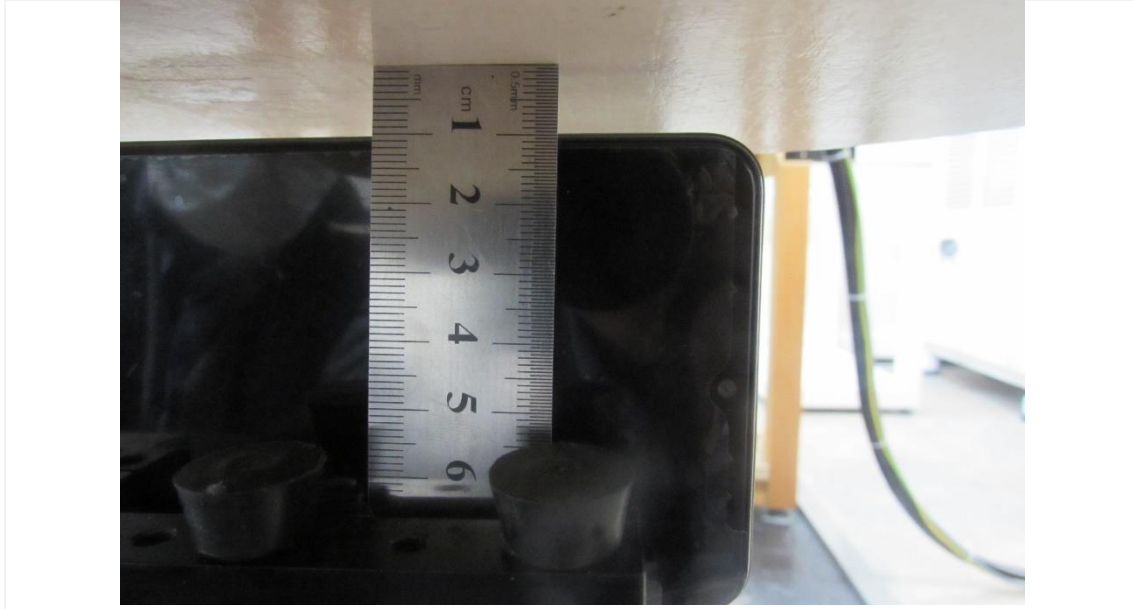


Distance of 10 mm from the EUT



Distance of 15 mm from the EUT

2.4 Body Left



Distance of 10 mm from the EUT

2.5 Body Right



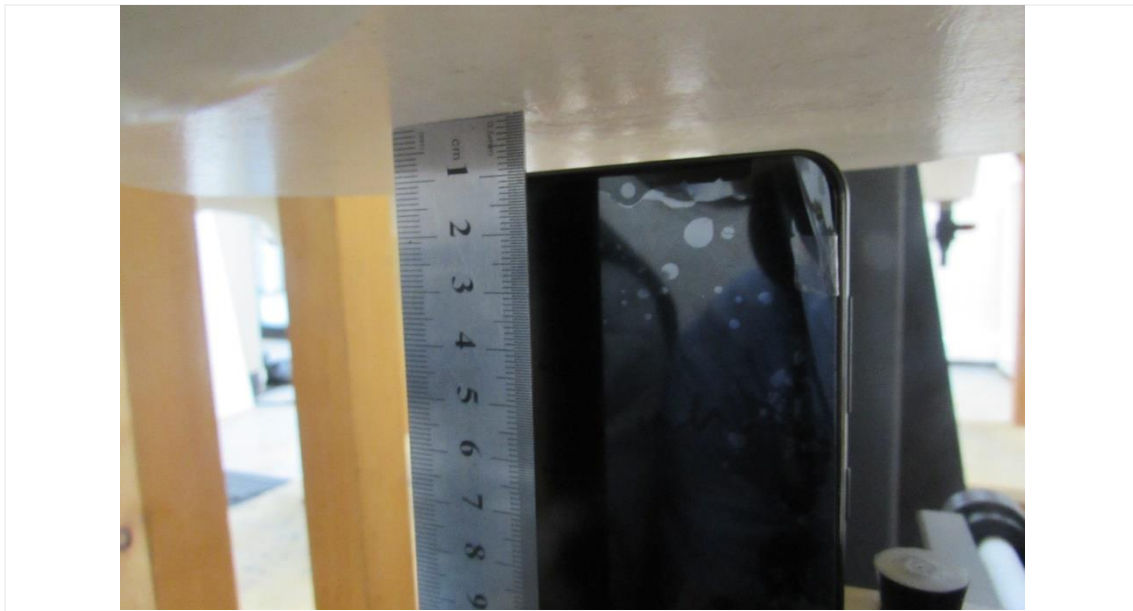
Distance of 10 mm from the EUT

2.6 Body Bottom



Distance of 10 mm from the EUT

2.7 Body Top



Distance of 10 mm from the EUT