

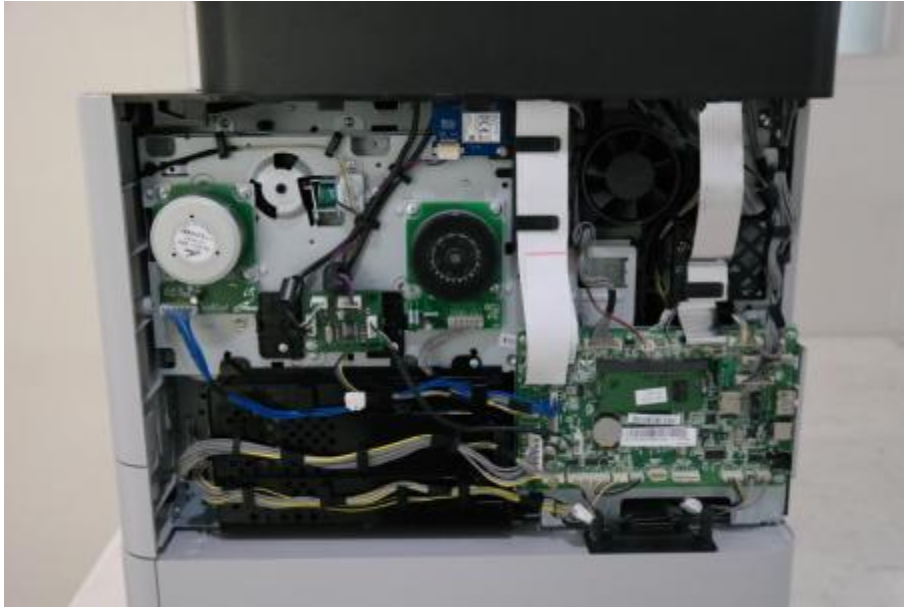
## Appendix – EUT photography



Front View



Rear View & Label Location



Right View (Inside View)



**USOC Jack Type:RJ11C**

Samsung Electronics Co., Ltd.  
Suwon, Korea, 443-742  
Place:

**M/C :**



**S/N : Z778BJZF400001Z**

**Model:ProXpress C2670FW**

**Volts:AC 110-127 V**

**Hertz:50/60 Hz**

**Amps: 8 A**

**Ringer Equivalence: 0.0B**

**Manufactured:**



**3UU7**

**US E337632**

**I.T.E.**

**FCC ID : A3LSLC2670FW**

**Contains FCC ID : A3LSPWB4319U**

This device complies with part 15 of the FCC Rules.

Operation is subject to the following two conditions:

- i) This device may not cause harmful interference, and
- ii) This device must accept any interference received, including interference that may cause undesired operation.

Complies with Part 68, FCC Rules.

**US: A3LFA00BCLX6260FW**

**CAN ICES-3 (B)/NMB-3(B)**

This product complies with 21 CFR Chapter 1, subchapter J.

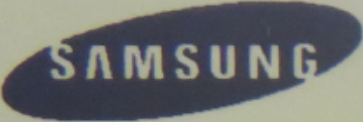
**Contains IC : 649E-SPWB4319U**

**IC: 649E-CLX6260FW**

**Made in China**

**Fabriqué en Chine REV. 00**

Label



**SAMSUNG**

**USOC Jack Type:RJ11C**

Samsung Electronics Co., Ltd.  
Suwon, Korea, 443-742  
Place: M264

**Model: ProXpress C2670FW**

**Volts: AC 110-127V**

**Hertz: 50/60 Hz**

**Amps: 8A**

**Ringer Equivalence: 0.0B**

**Manufactured:**



**3UU7**

**E337632**

**I.T.E.**

FCC ID : A3LSLC2670FW

Contains FCC ID : A3LSPWB4319U

This device complies with part 15 of the FCC Rules.

Operation is subject to the following two conditions:

i) This device may not cause harmful interference, and

ii) This device must accept any interference received,  
including interference that may cause undesired operation.

Complies with Part 68, FCC Rules.

US: A3LFA00BCLX6260FW

CAN ICES-3 (B)/NMB-3(B)

This product complies with 21 CFR Chapter 1, subchapter J.

Contains IC : 649E-SPWB4319U

IC: 649E-CLX6260FW

**Serial No.:**

---

**Made in China**

**Fabriqu  en Chine REV.00**