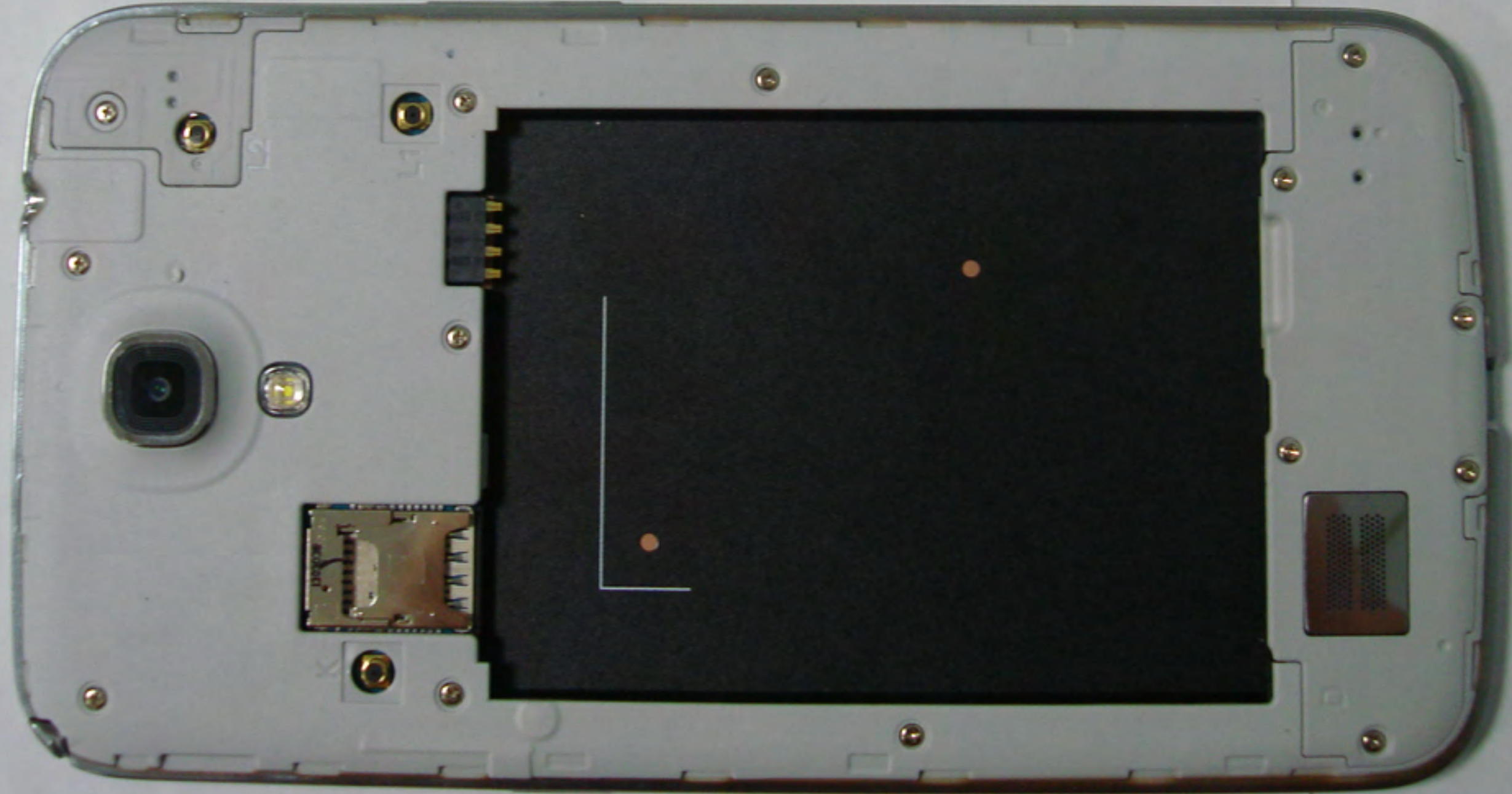


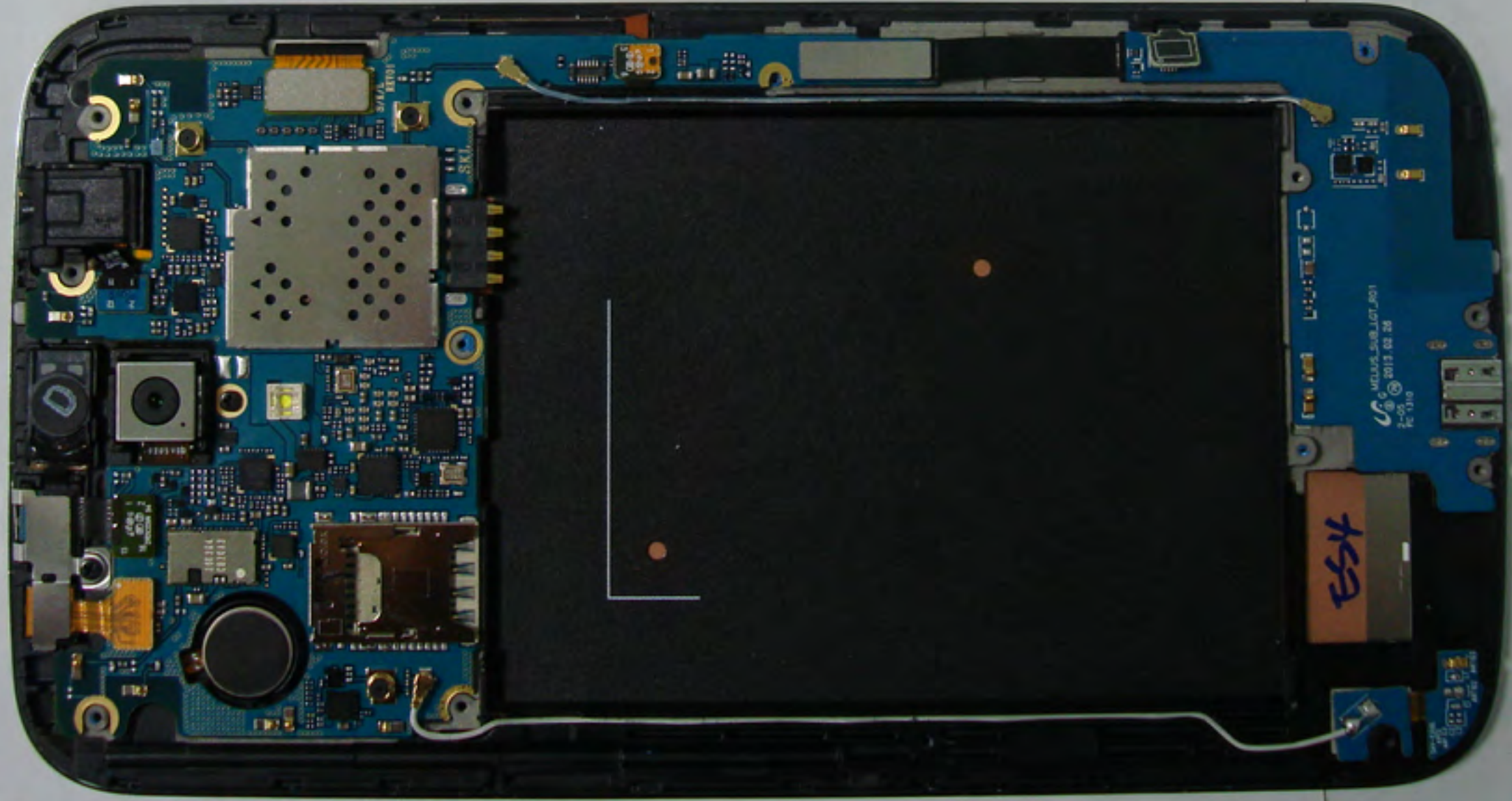
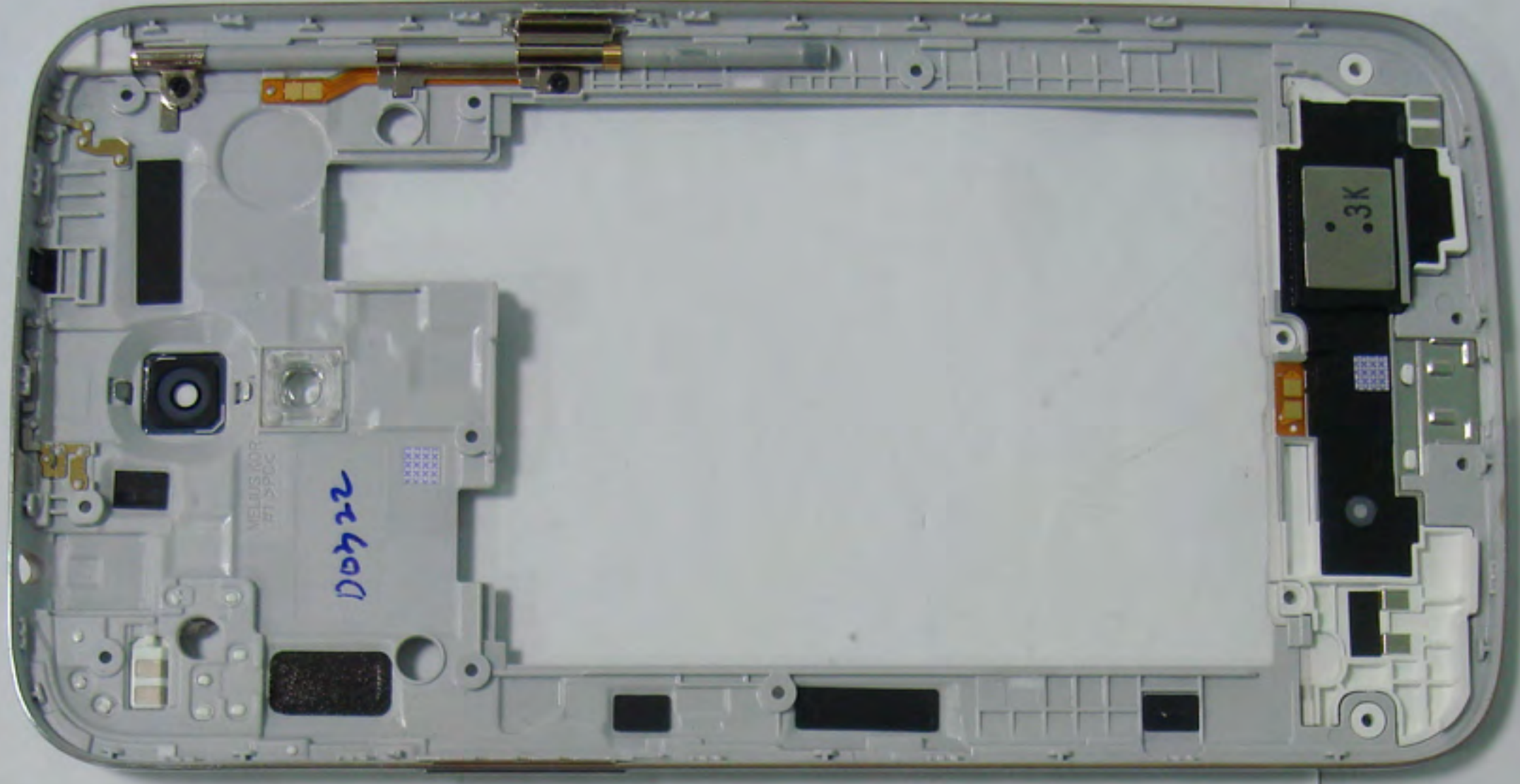


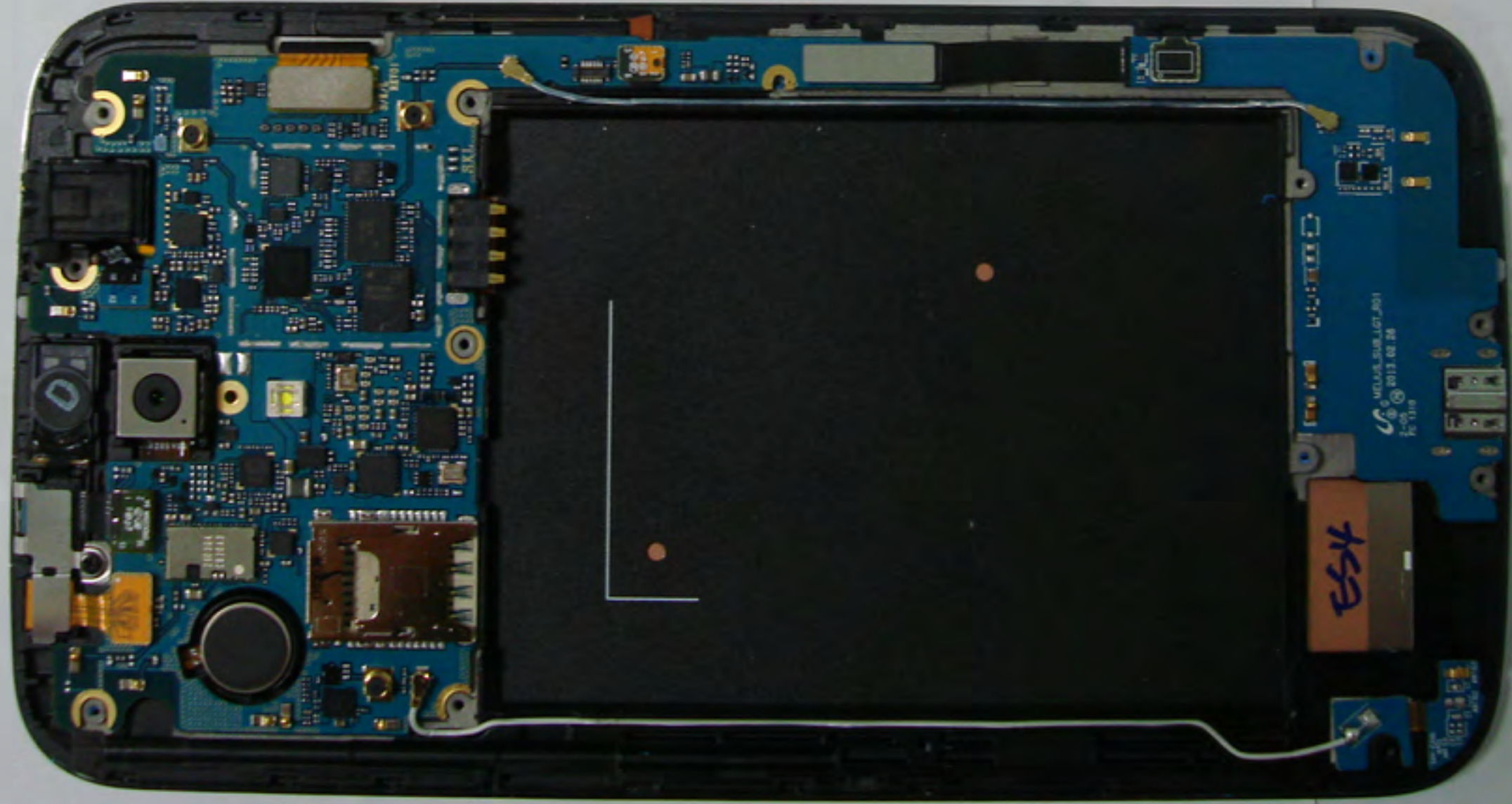
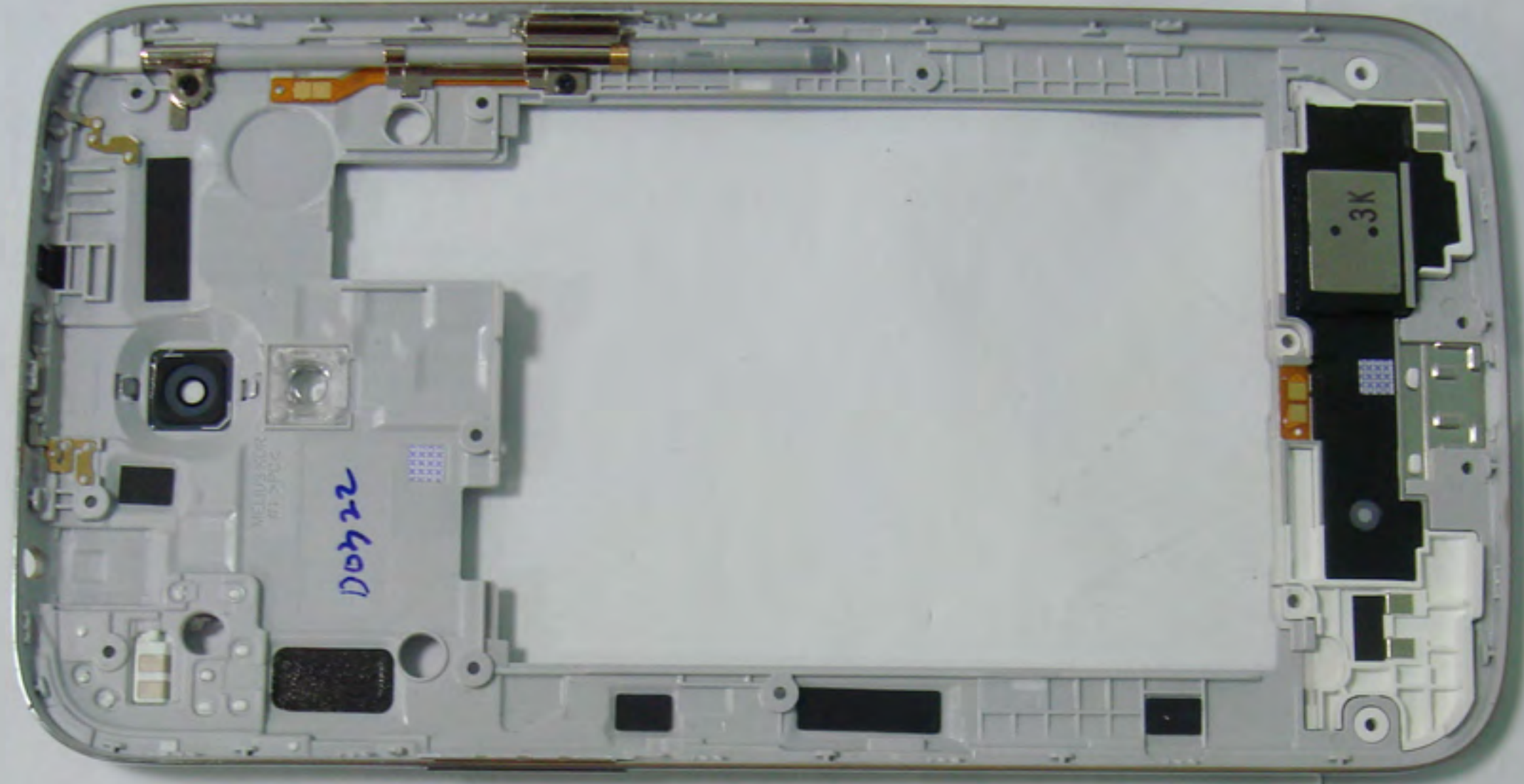
The FCC ID label is located in the battery compartment.

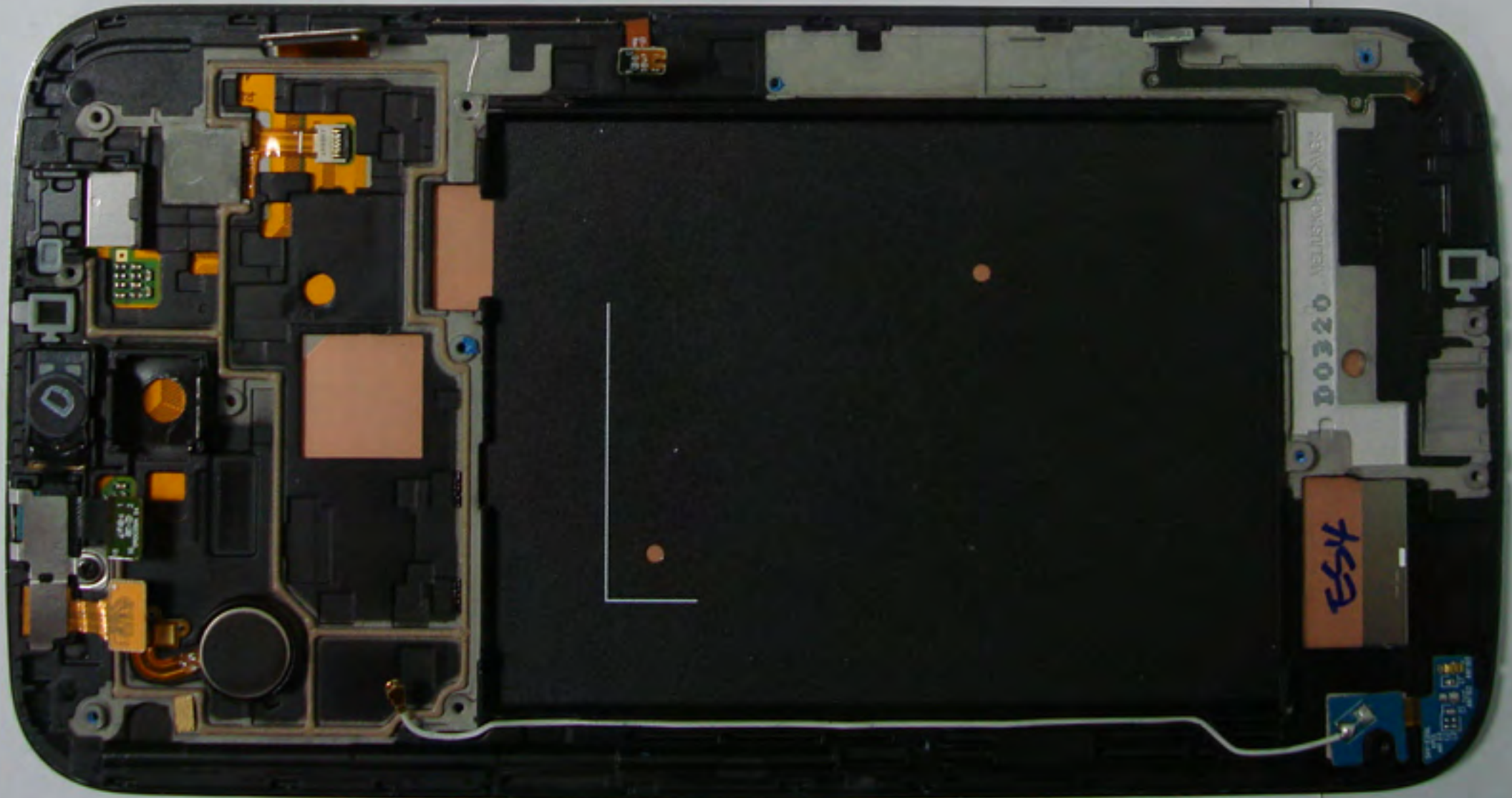
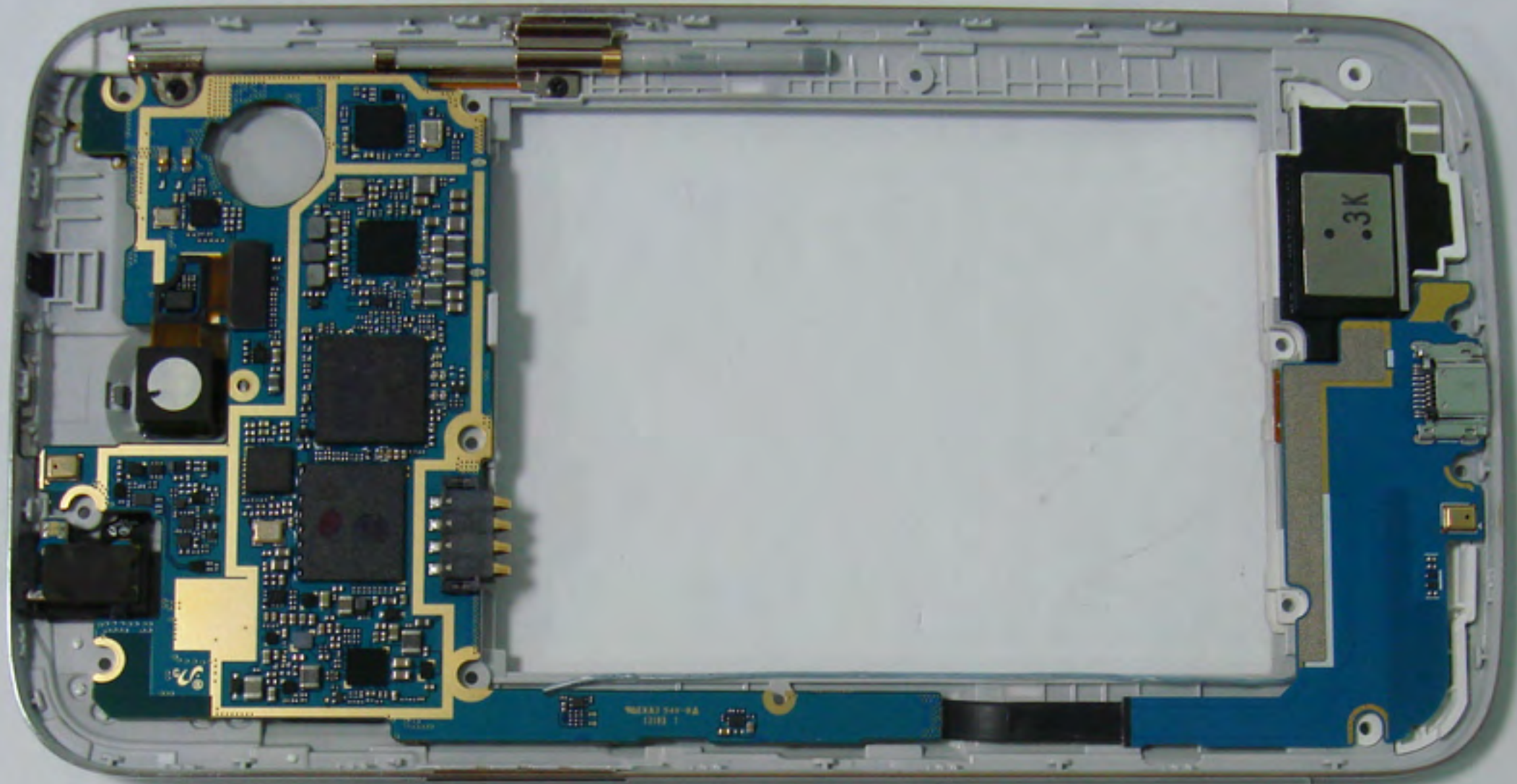
While the battery cover is installed when the unit is shipped from the factory, the battery is never installed prior to sale, so the user must remove the cover in order to install the battery and operate the device.

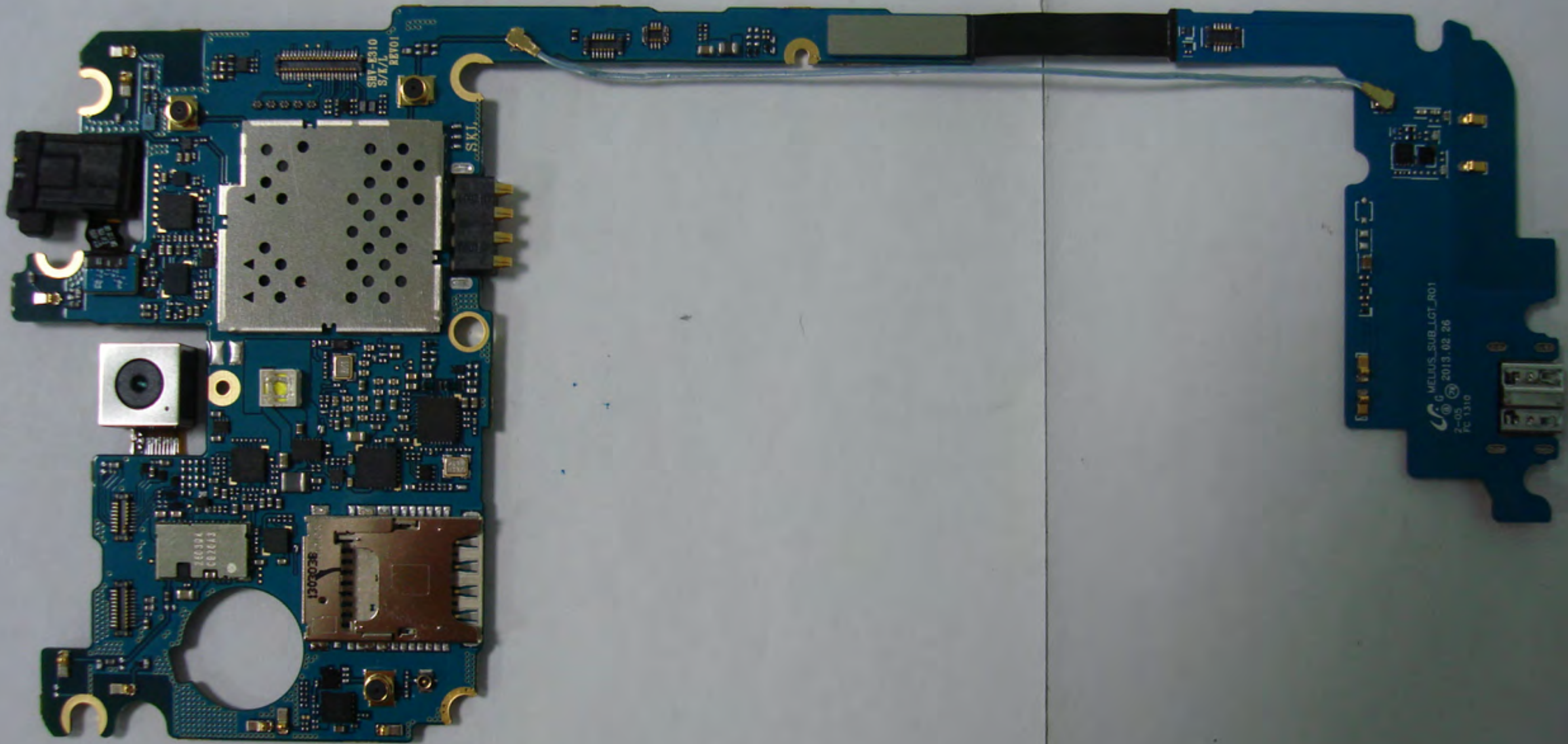
At this time the FCC ID is readily visible to the user. The label is permanently attached by acrylic glue and not easily removed from the device.”











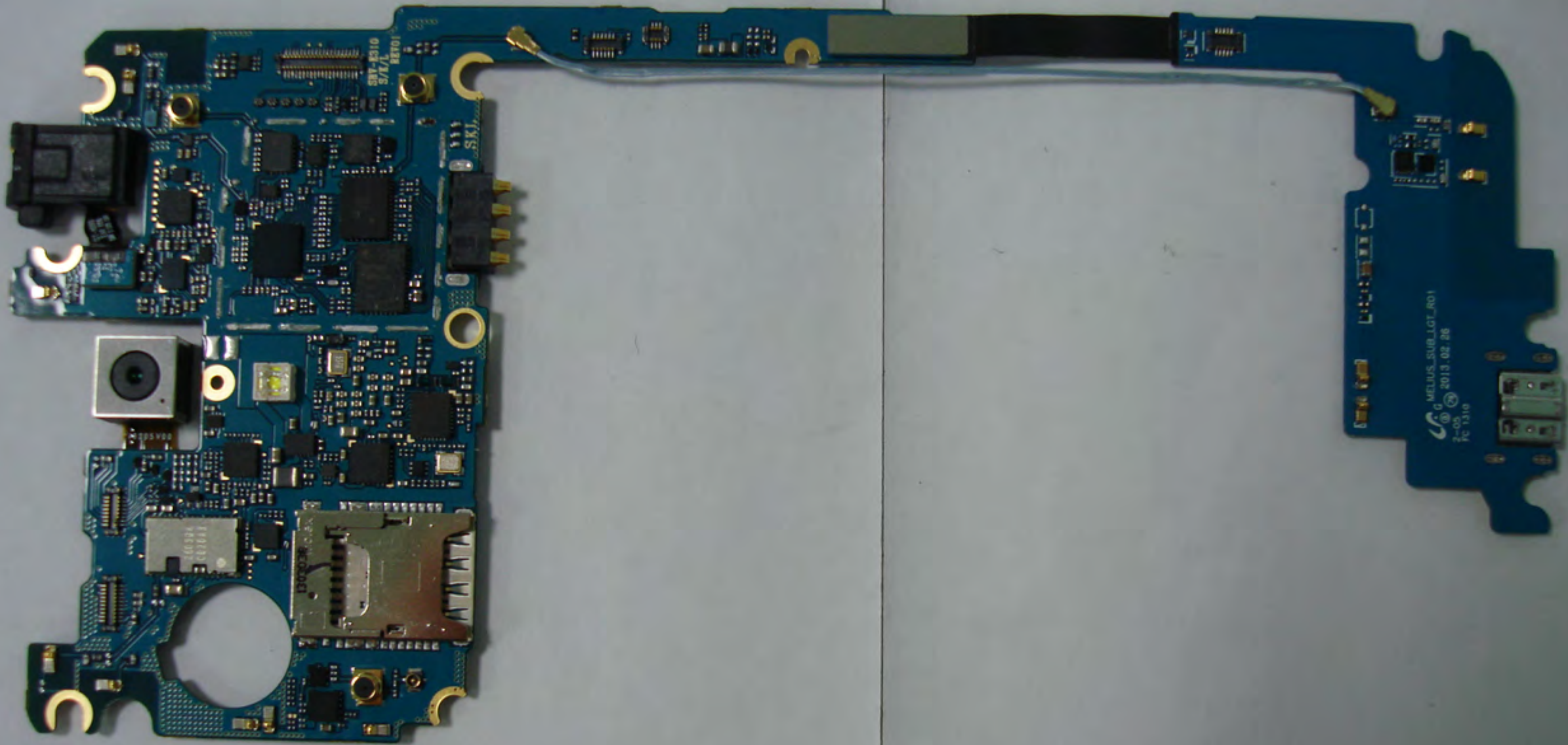
SUY-E310
S/K/L
REV01

SKJ

1103034
1403032

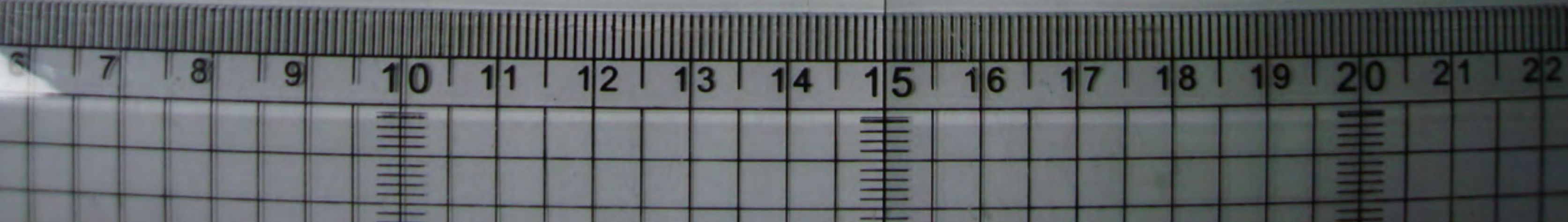
380038

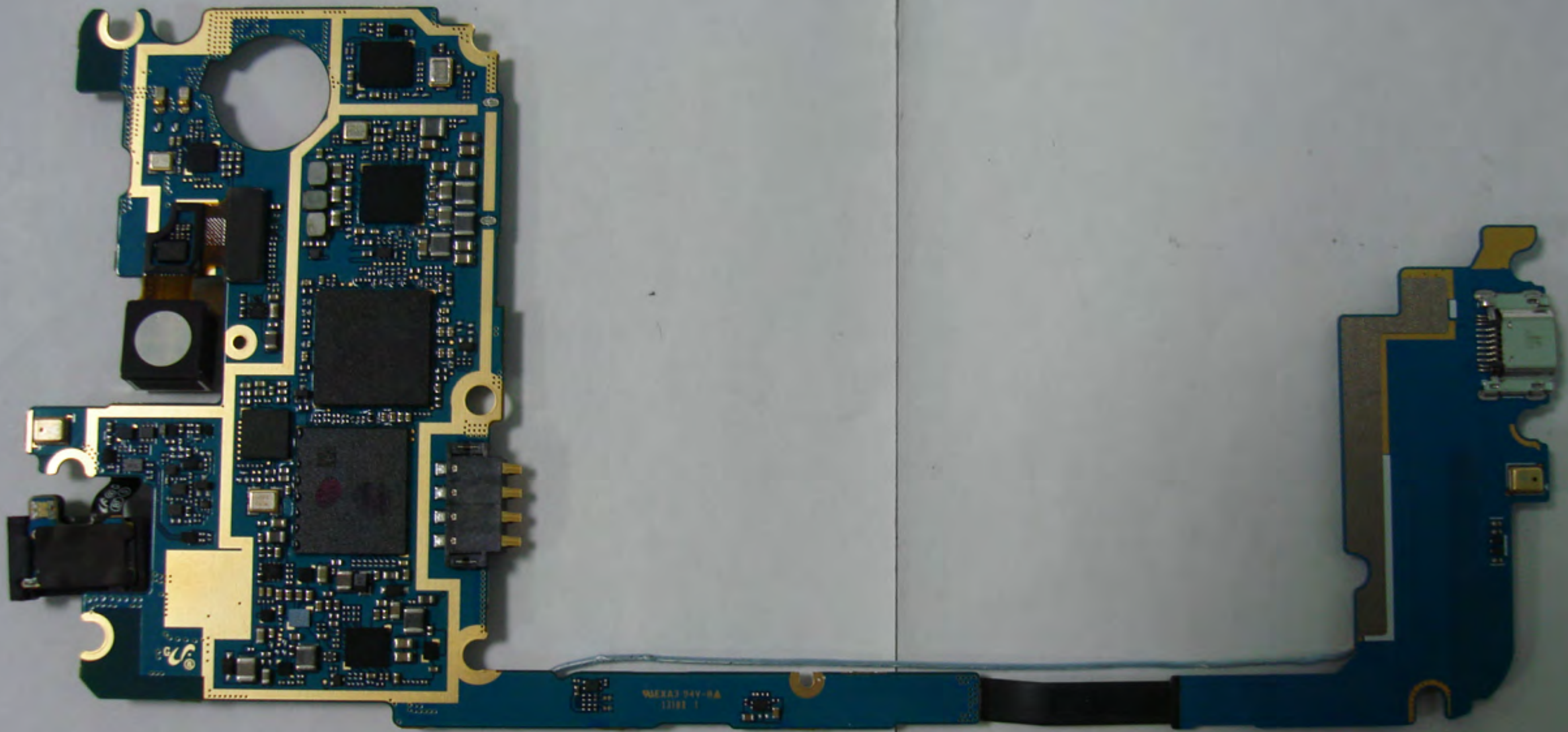
G MELIUS_SUB.LGT_R01
2-05 2013.02.26
FC 1310



SMT-8310
S/A

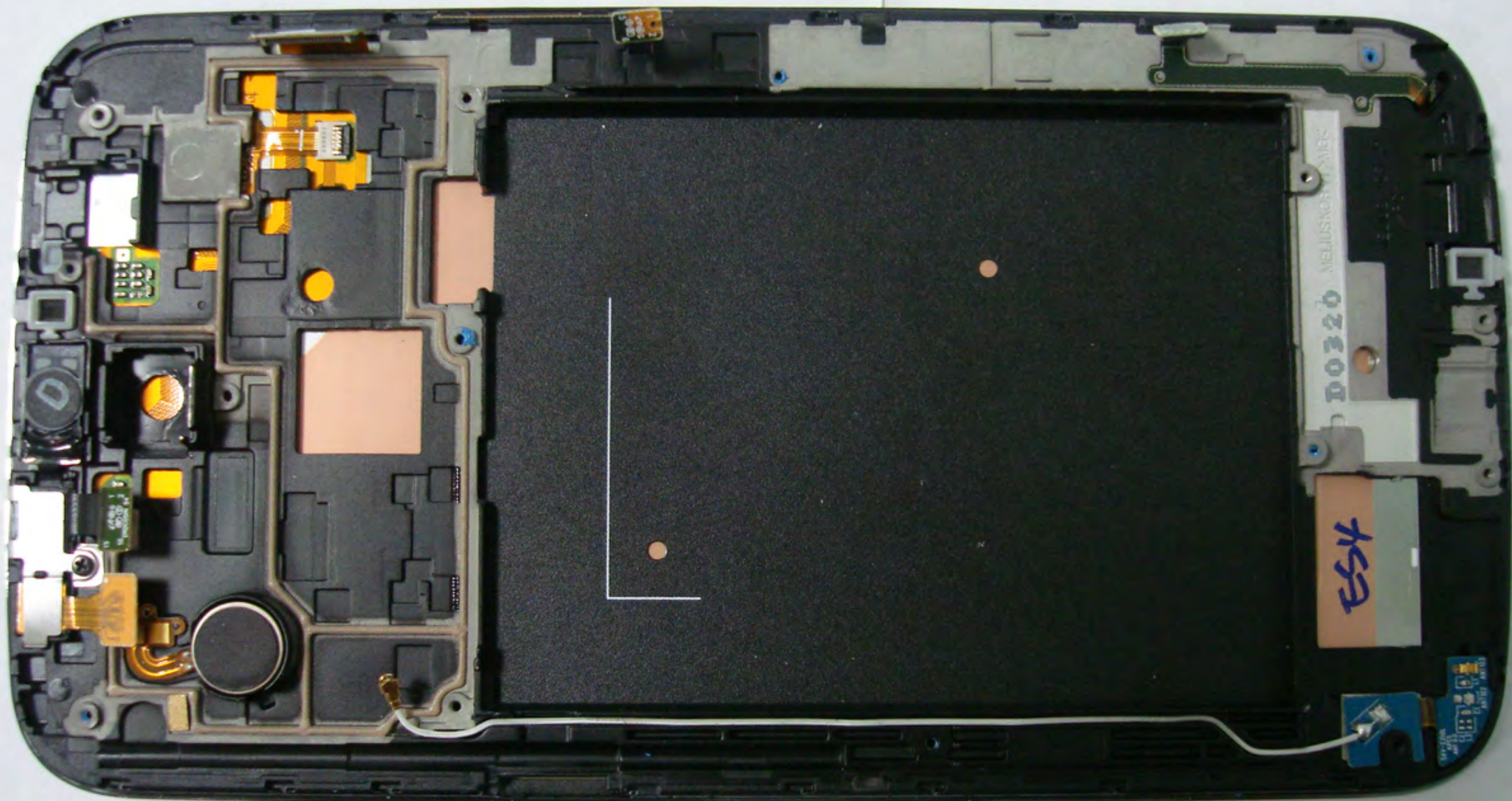
MELIUS SUB LGT_R01
2-05
2013 02 26
PC 1310

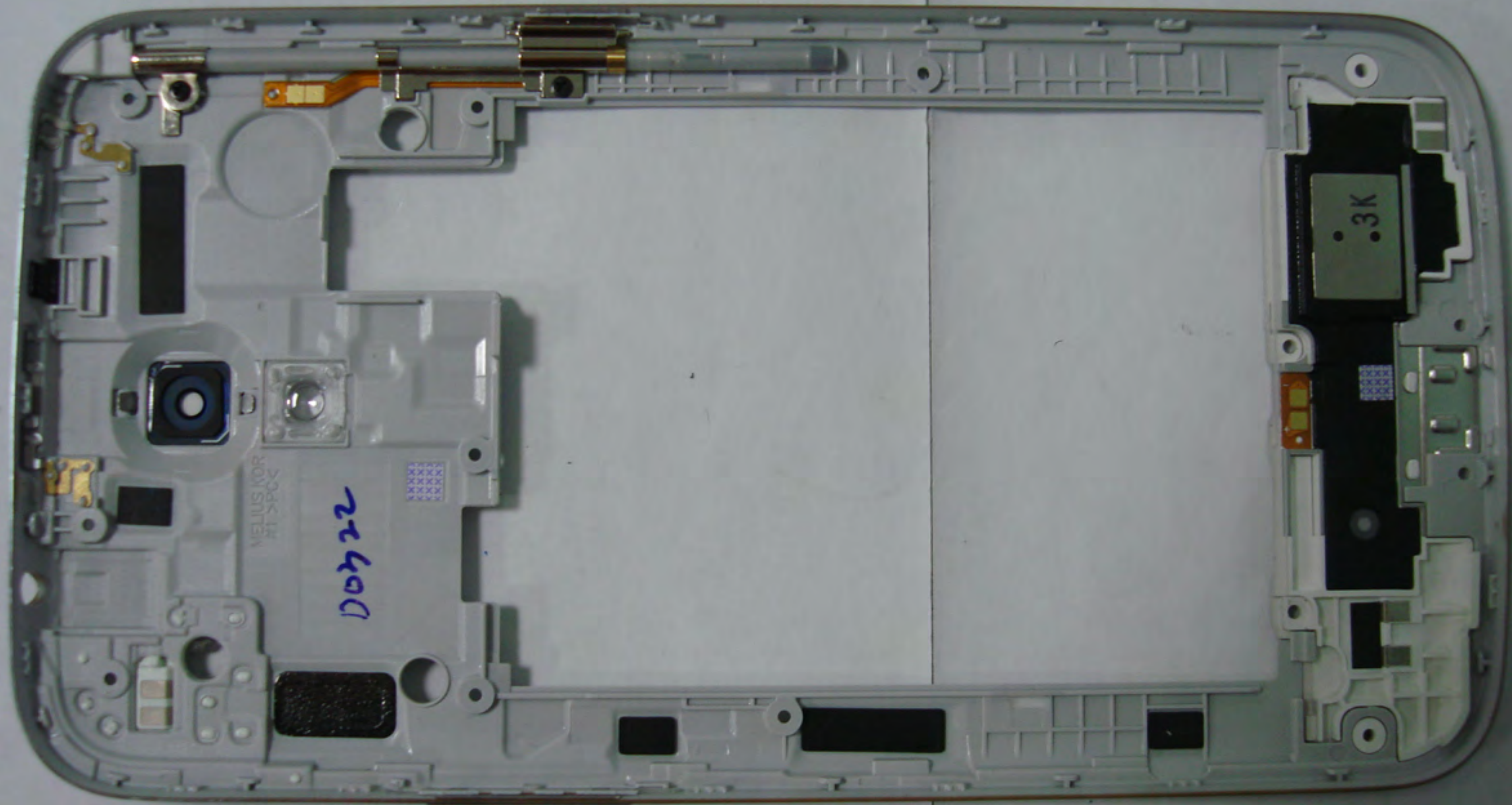




WEXA3 94V-0A
13188 1

6 7 8 9 10 11 12 13 14 15 16 17 18 19 20 21 22





VELLUS KOR
HT X6CV

D0422

3K





