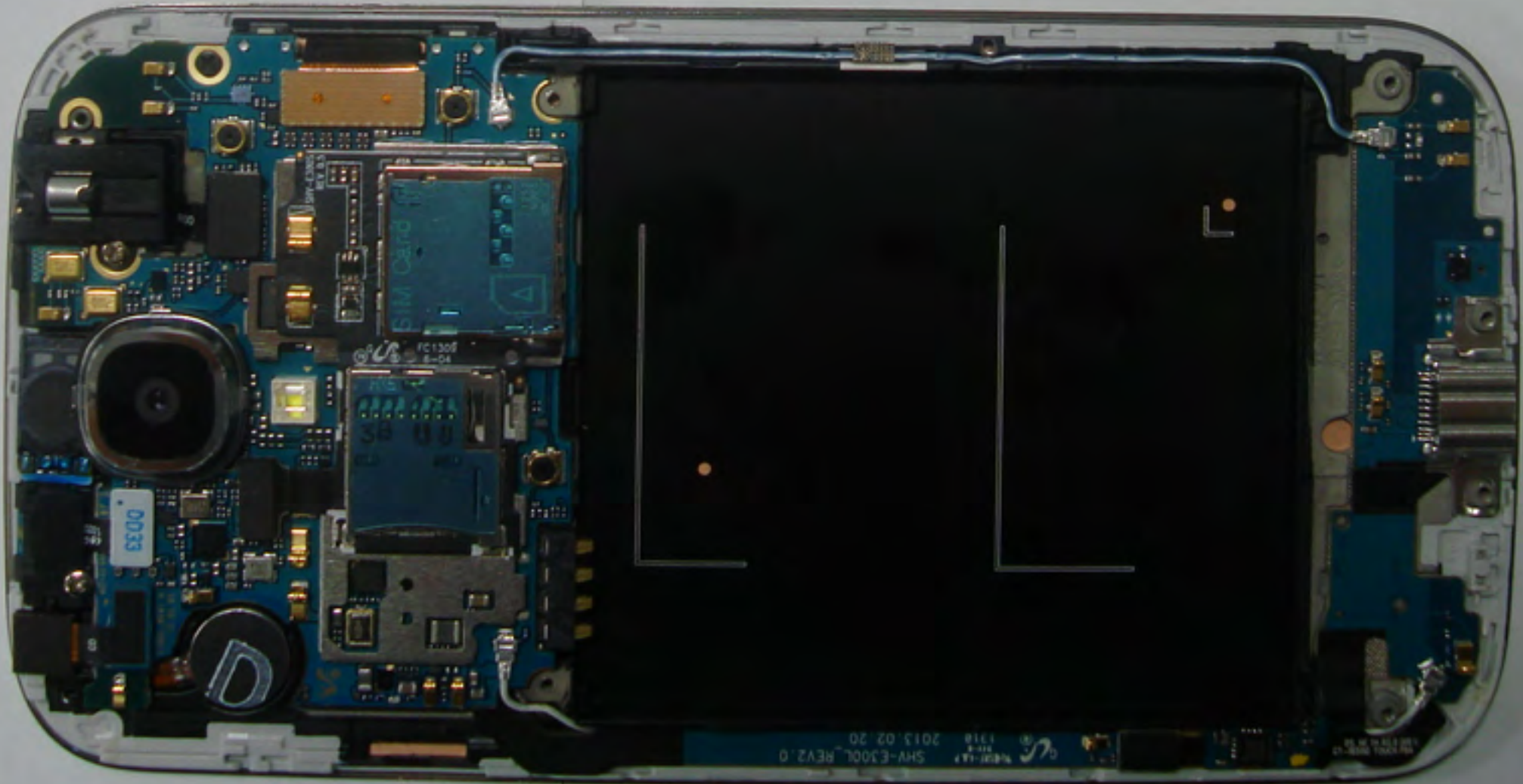
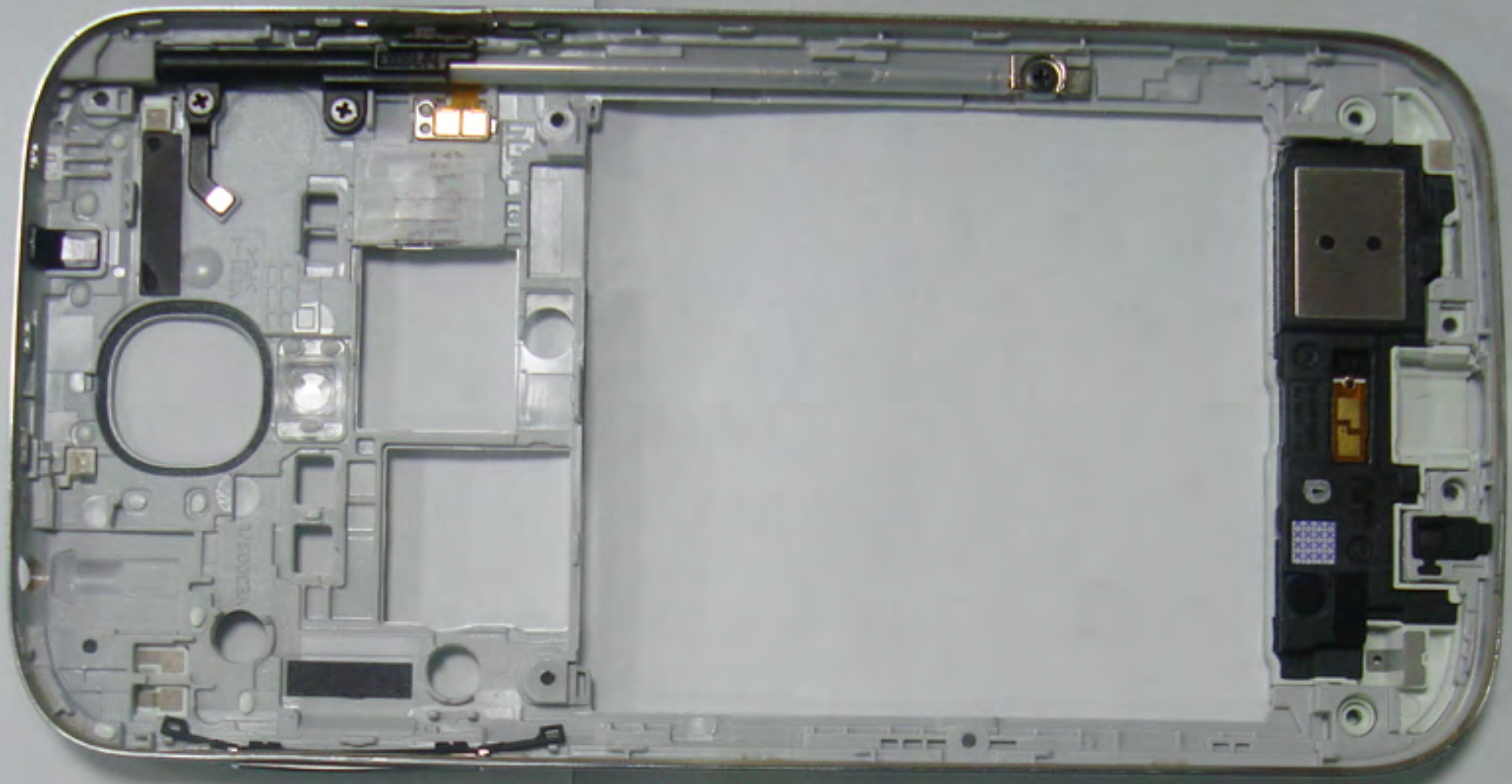


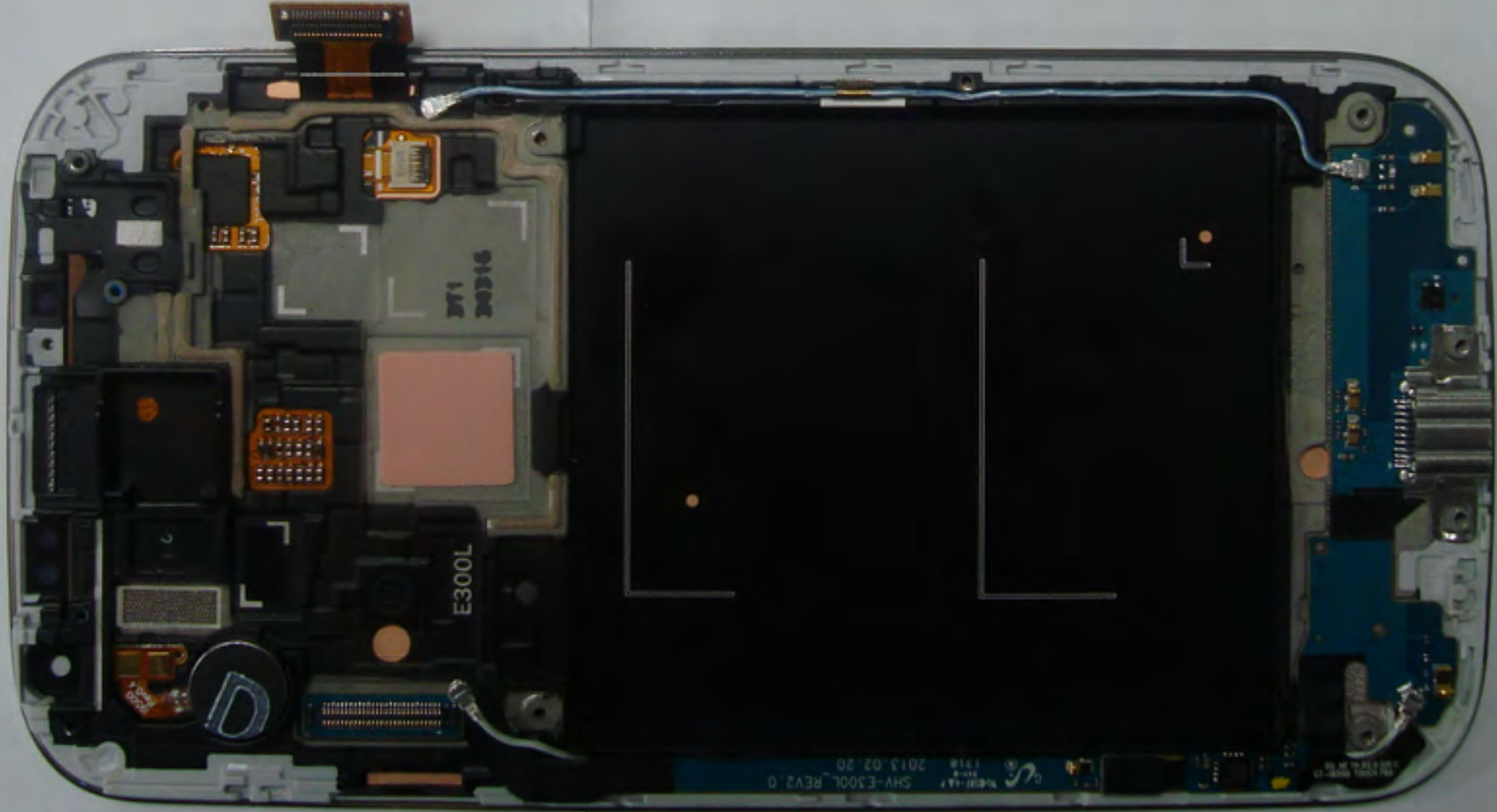
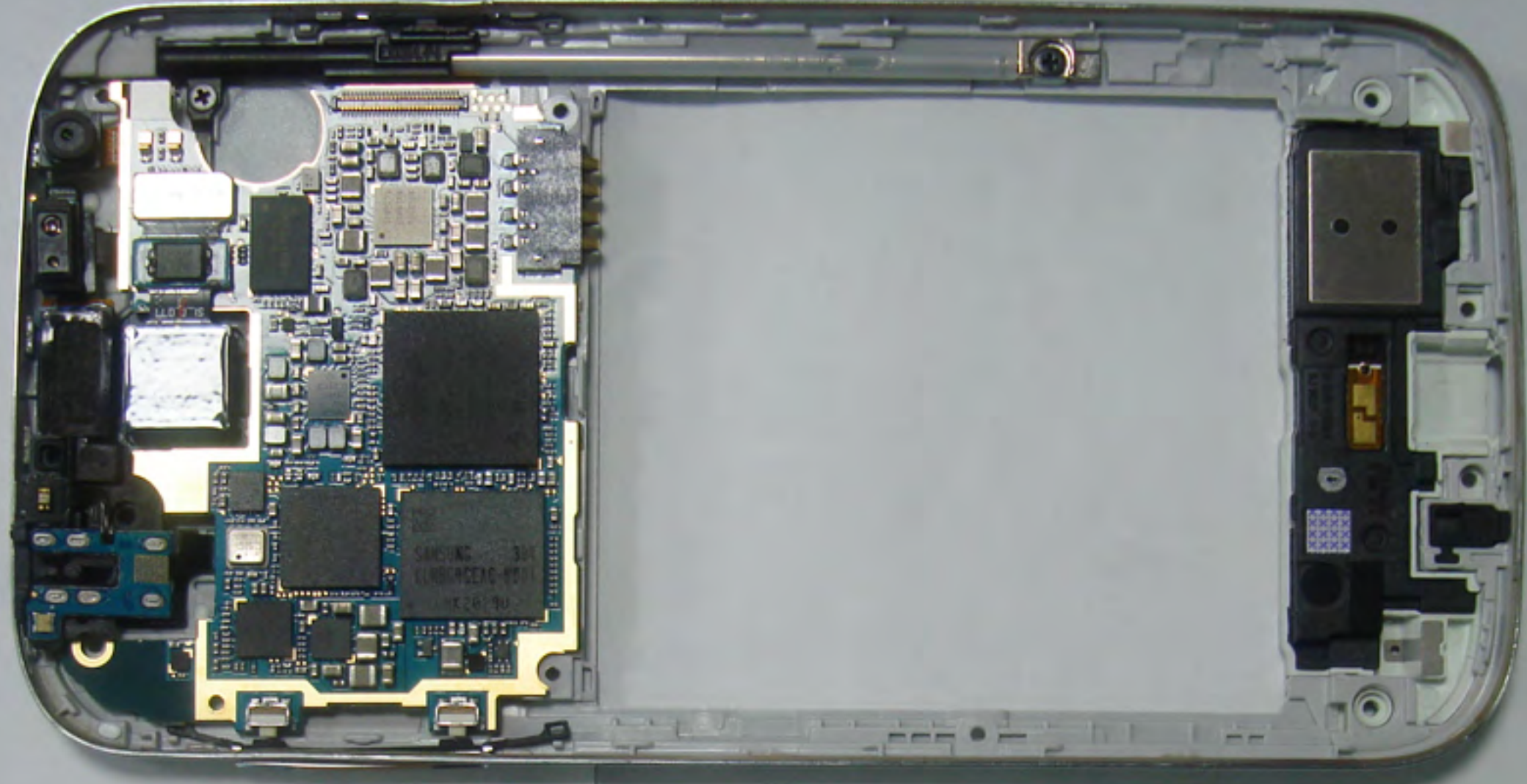


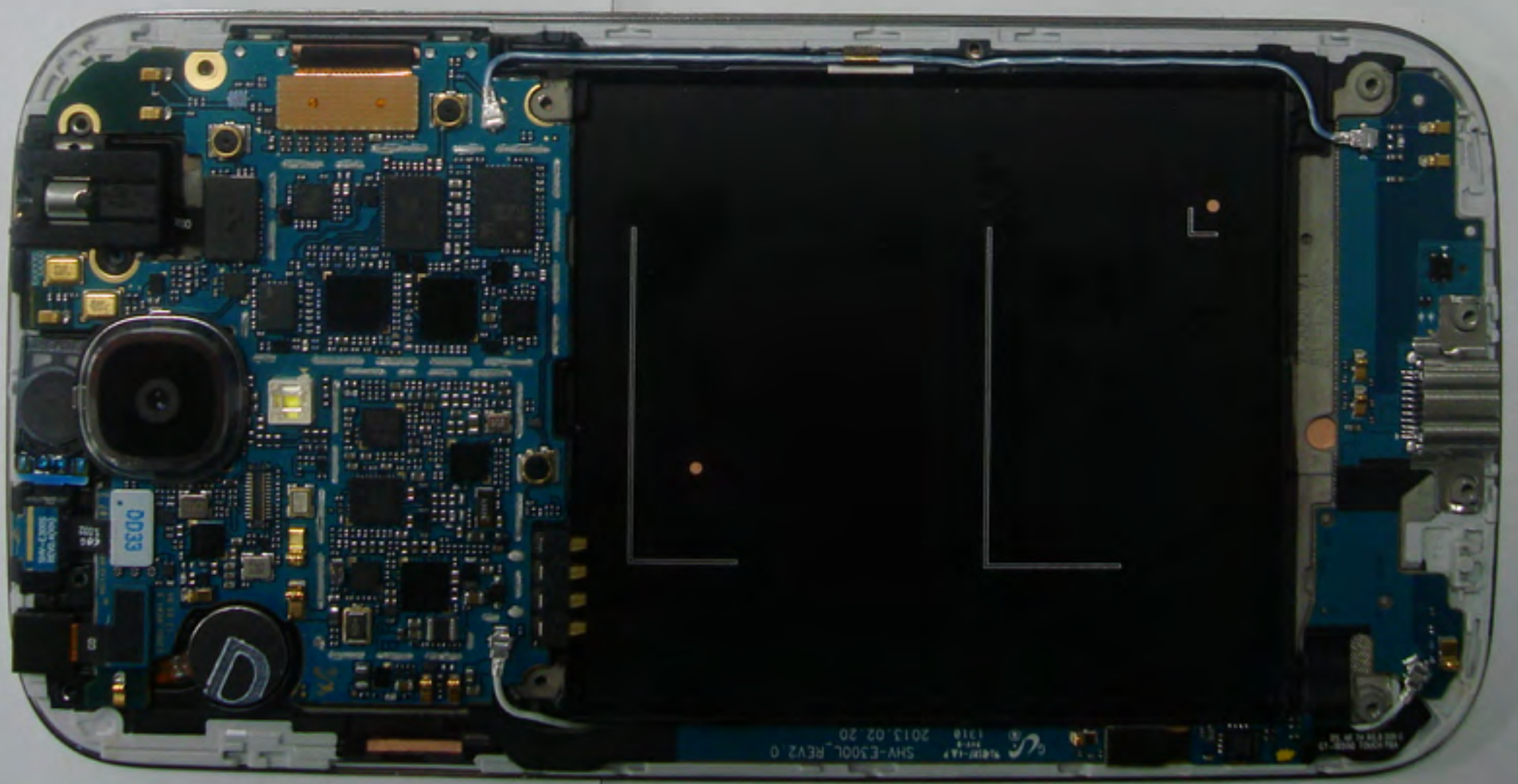
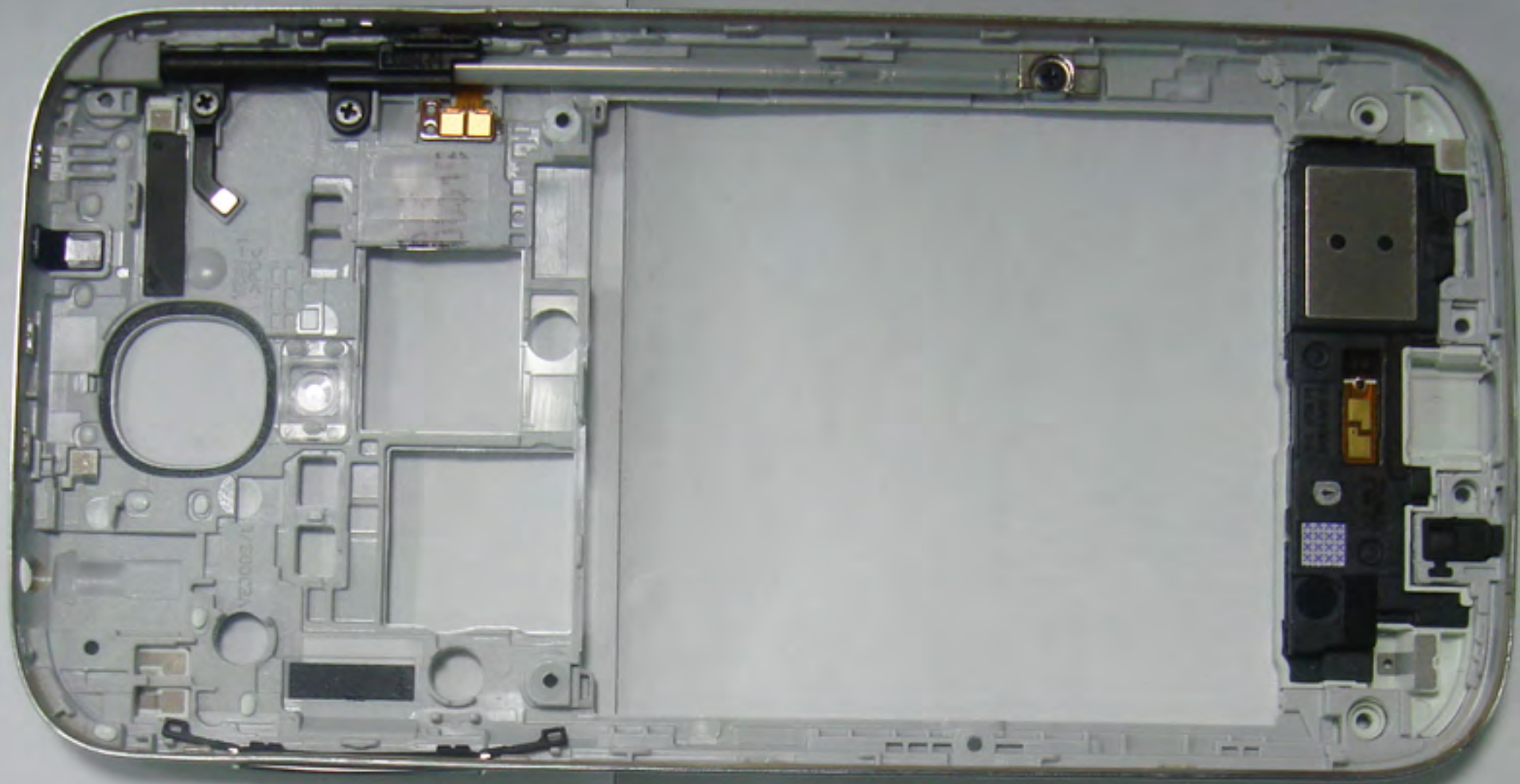
The FCC ID label is located in the battery compartment.

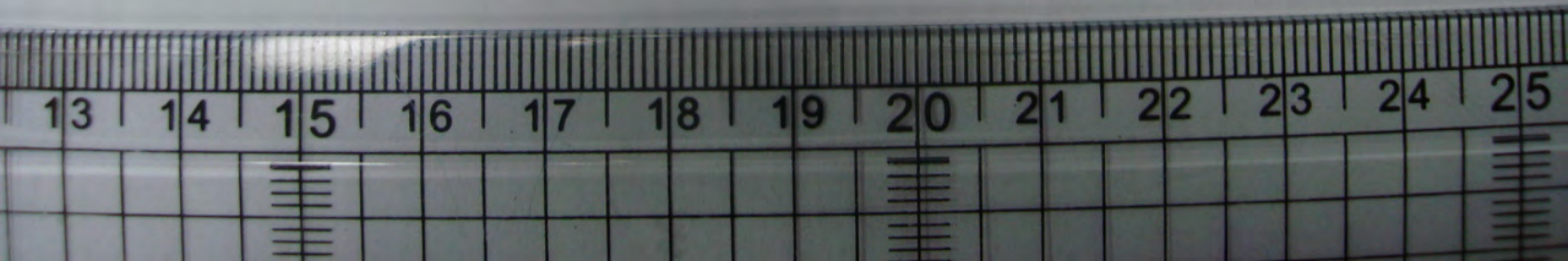
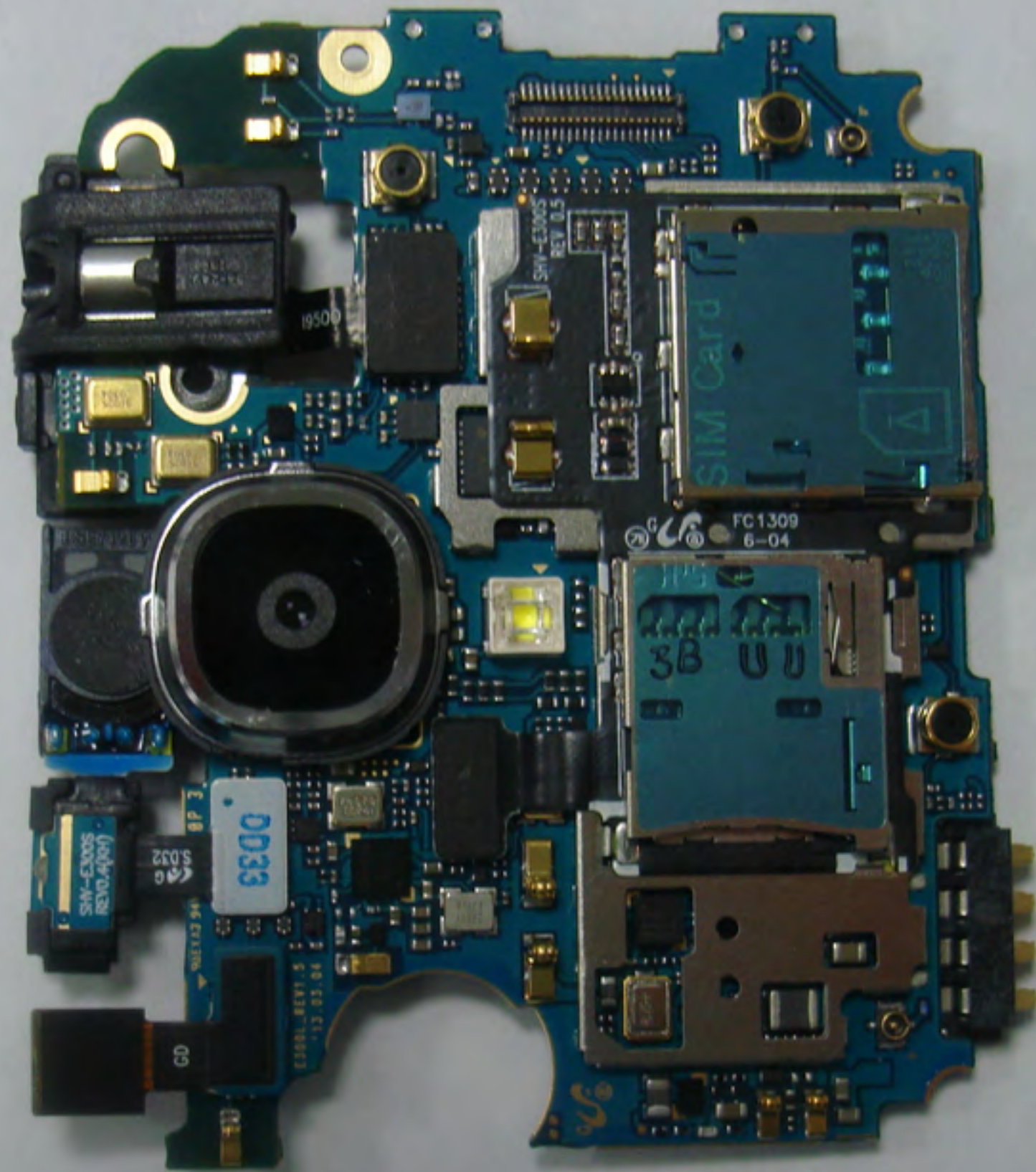
While the battery cover is installed when the unit is shipped from the factory, the battery is never installed prior to sale, so the user must remove the cover in order to install the battery and operate the device.

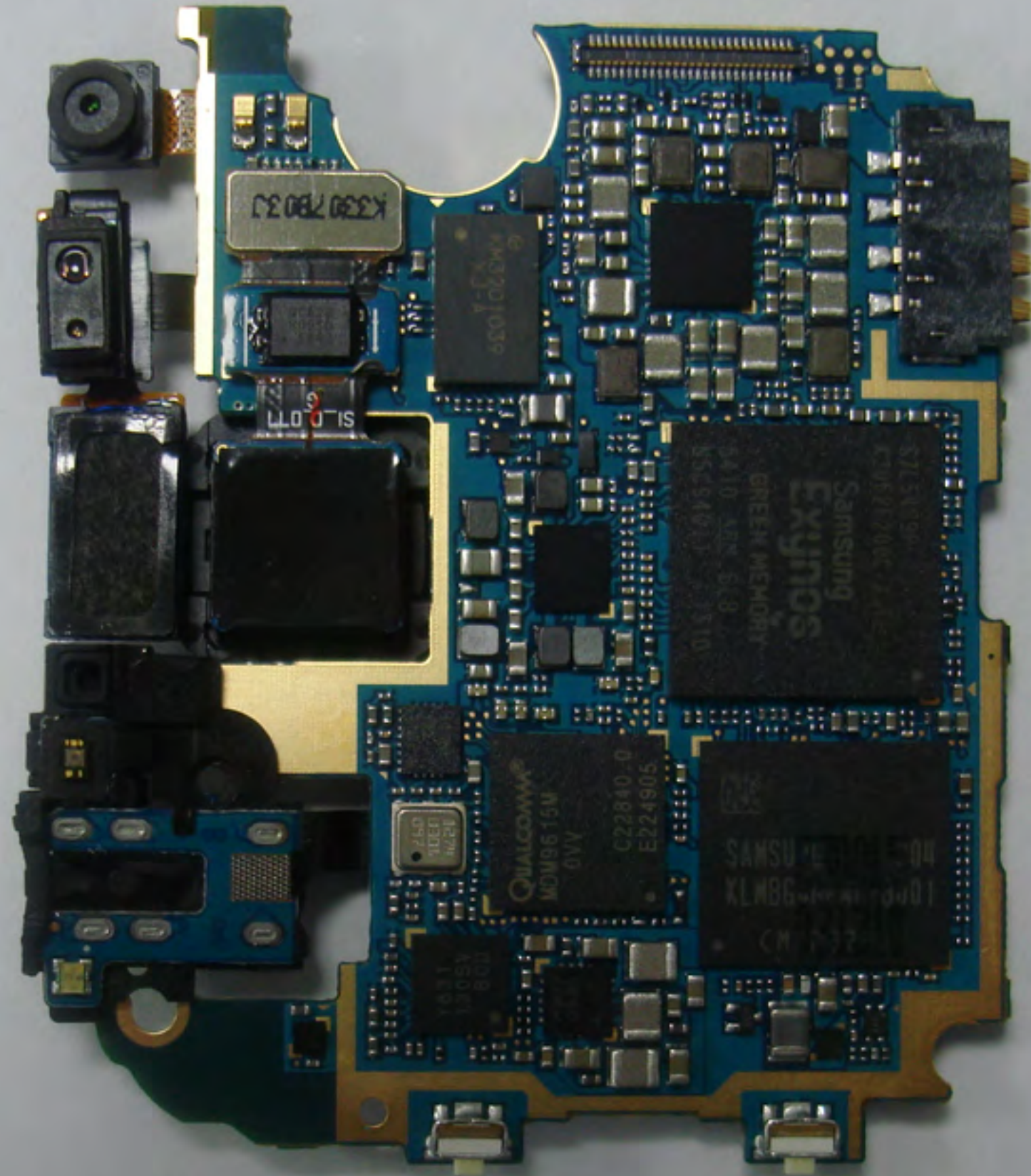
At this time the FCC ID is readily visible to the user. The label is permanently attached by acrylic glue and not easily removed from the device.”

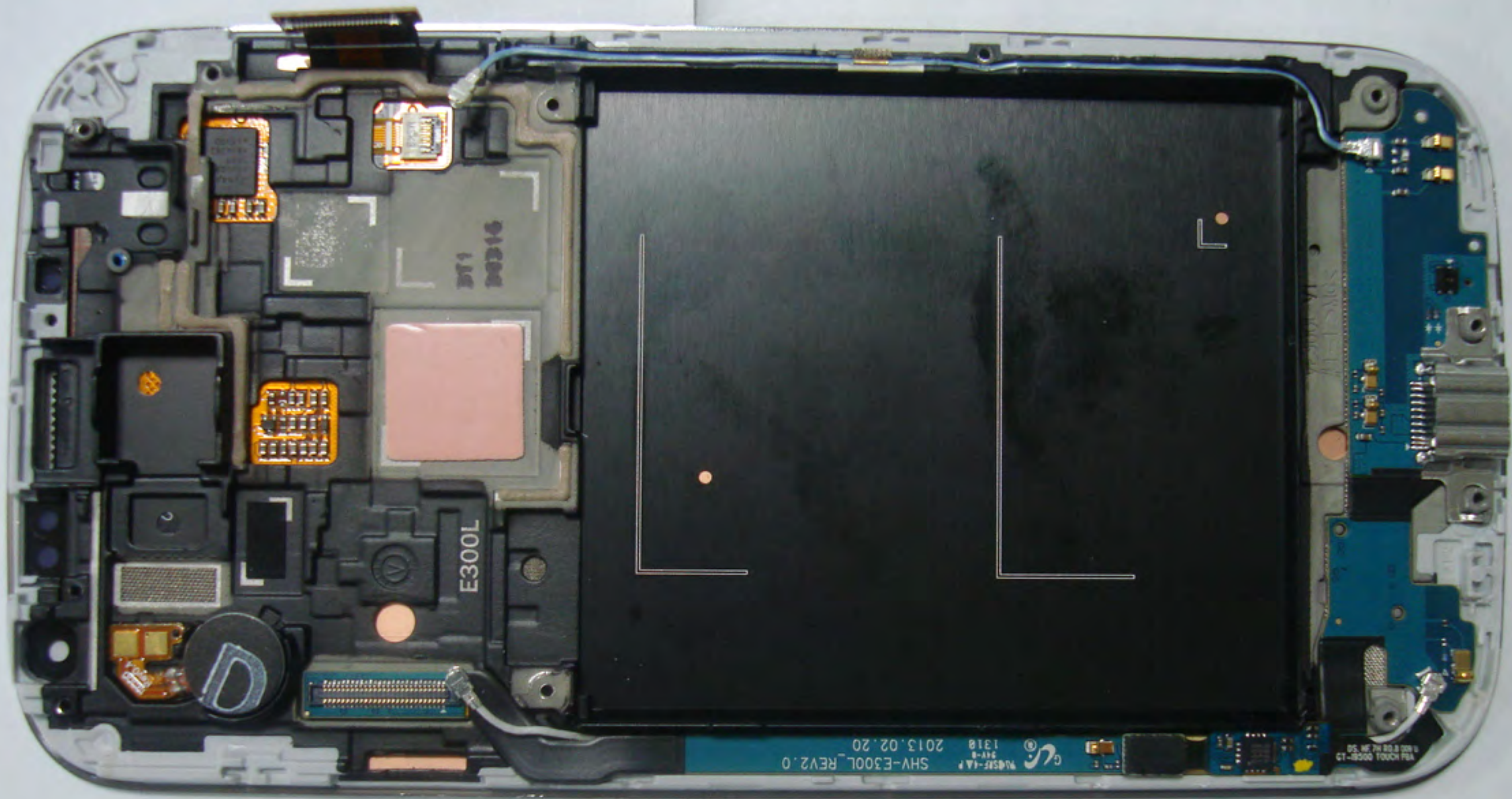










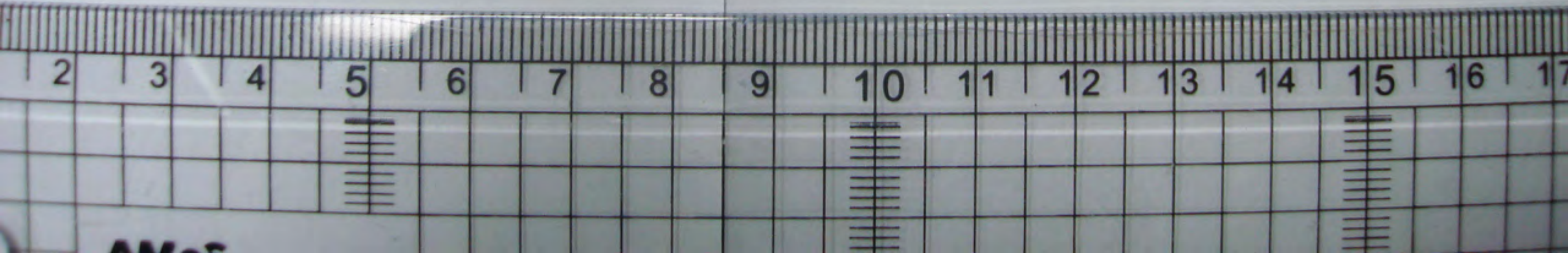


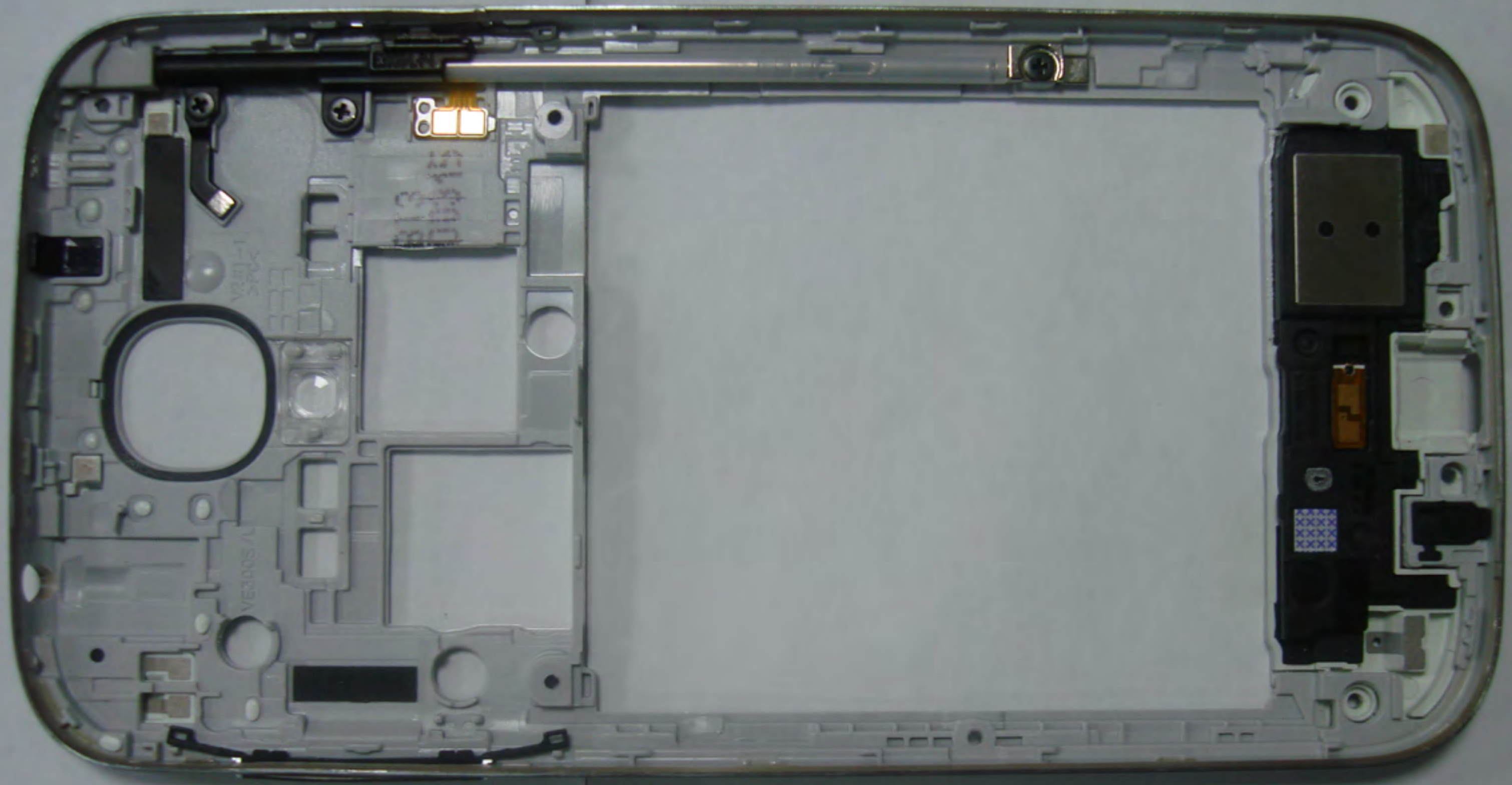
BT1
D0316

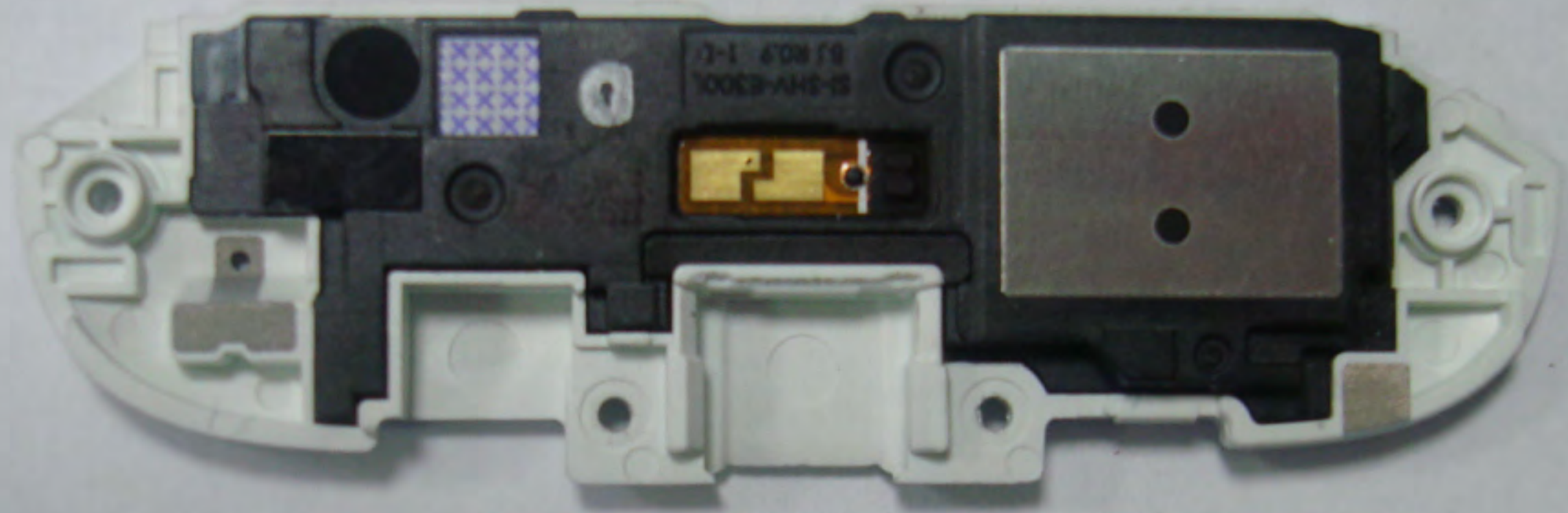
E300L

SHV-E300L_REV2.0
2013.02.20

100% TOUCH PBA
CT-0500



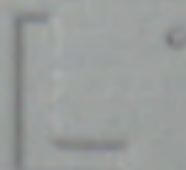




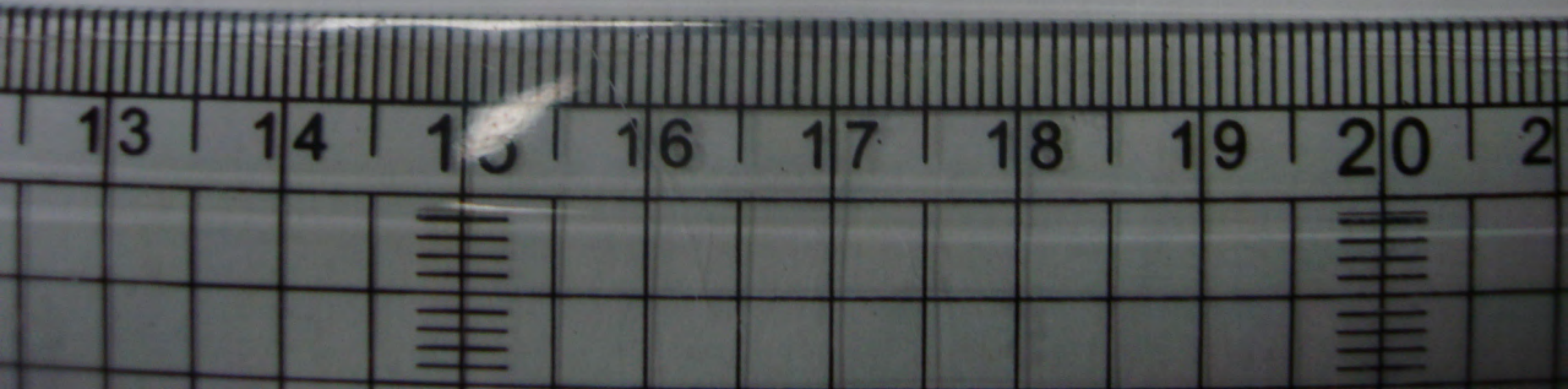
12 | 13 | 14 | 15 | 16 | 17 | 18 | 19 | 20 | 21



VE8001-41-1



PA11



13

14

15

16

17

18

19

20

2