

SAMSUNG FCC ID : A3LSGHZ720 1900MHz GSM1900 Head SAR

DUT: SGH-Z720(Up); Serial: FD-176-C

Program Name: SGH-Z720 GSM1900 Right Slide Up (Job No. : FD-176)

Procedure Name: Cheek/Touch, Ch.810, Ant.Intenna, Bat.Standard

Procedure Notes: Meas.Tissue Temp(celsius)-22.0, Ambient Temp-22.3;Test Date-07/Sep/2006[OET Bulletin 65-Supplement C, July 2001]

Communication System: GSM 1900; Frequency: 1909.8 MHz;Duty Cycle: 1:8.3

Medium parameters used: $f = 1909.8$ MHz; $\sigma = 1.37$ mho/m; $\epsilon_r = 39.6$; $\rho = 1000$ kg/m³

Phantom section: Right Section

DASY4 Configuration:

- Probe: ES3DV3 - SN3080; ConvF(5, 5, 5); Calibrated: 2006-05-30
- Sensor-Surface: 4mm (Mechanical Surface Detection)
- Electronics: DAE4 Sn686; Calibrated: 2006-05-05
- Phantom: SAM PHANTOM #2; Type: SAM; Serial: TP-1248
- Measurement SW: DASY4, V4.7 Build 44; Postprocessing SW: SEMCAD, V1.8 Build 171

Cheek/Touch, Ch.810, Ant.Intenna, Bat.Standard/Area Scan (51x71x1): Measurement grid: dx=20mm, dy=20mm

Maximum value of SAR (interpolated) = 0.055 mW/g

Cheek/Touch, Ch.810, Ant.Intenna, Bat.Standard/Zoom Scan (5x5x7)/Cube 0:

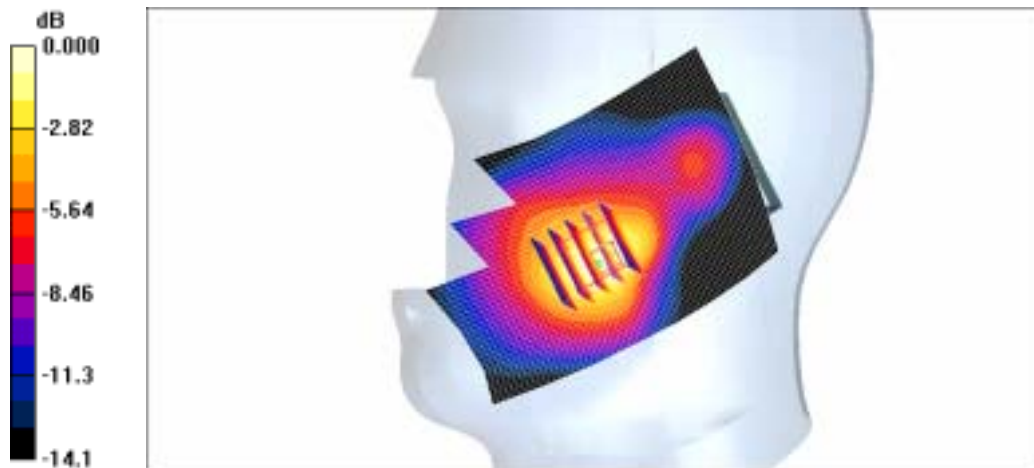
Measurement grid: dx=8mm, dy=8mm, dz=5mm

Reference Value = 4.97 V/m; Power Drift = -0.155 dB

Peak SAR (extrapolated) = 0.068 W/kg

SAR(1 g) = 0.050 mW/g

Maximum value of SAR (measured) = 0.053 mW/g



0 dB = 0.053mW/g

SAMSUNG FCC ID : A3LSGHZ720 1900MHz GSM1900 Head SAR

DUT: SGH-Z720(Up); Serial: FD-176-C

Program Name: SGH-Z720 GSM1900 Right Slide Up (Job No. : FD-176)

Procedure Name: Ear/Tilt, Ch.661, Ant.Intenna, Bat.Standard

Procedure Notes: Meas.Tissue Temp(celsius)-22.0, Ambient Temp-22.3;Test Date-07/Sep/2006[OET Bulletin 65-Supplement C, July 2001]

Communication System: GSM 1900; Frequency: 1880 MHz;Duty Cycle: 1:8.3

Medium parameters used: $f = 1880$ MHz; $\sigma = 1.37$ mho/m; $\epsilon_r = 39.6$; $\rho = 1000$ kg/m³

Phantom section: Right Section

DASY4 Configuration:

- Probe: ES3DV3 - SN3080; ConvF(5, 5, 5); Calibrated: 2006-05-30
- Sensor-Surface: 4mm (Mechanical Surface Detection)
- Electronics: DAE4 Sn686; Calibrated: 2006-05-05
- Phantom: SAM PHANTOM #2; Type: SAM; Serial: TP-1248
- Measurement SW: DASY4, V4.7 Build 44; Postprocessing SW: SEMCAD, V1.8 Build 171

Ear/Tilt, Ch.661, Ant.Intenna, Bat.Standard/Area Scan (51x71x1): Measurement grid:

$dx=20$ mm, $dy=20$ mm

Maximum value of SAR (interpolated) = 0.024 mW/g

Ear/Tilt, Ch.661, Ant.Intenna, Bat.Standard/Zoom Scan (5x5x7)/Cube 0: Measurement

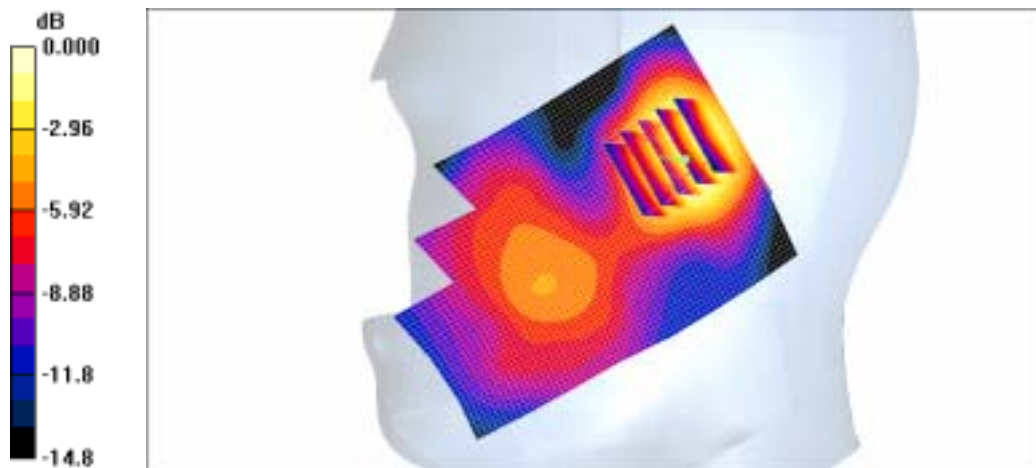
grid: $dx=8$ mm, $dy=8$ mm, $dz=5$ mm

Reference Value = 3.94 V/m; Power Drift = -0.129 dB

Peak SAR (extrapolated) = 0.026 W/kg

SAR(1 g) = 0.020 mW/g

Maximum value of SAR (measured) = 0.021 mW/g



0 dB = 0.021mW/g

SAMSUNG FCC ID : A3LSGHZ720 1900MHz GSM1900 Head SAR

DUT: SGH-Z720(Up); Serial: FD-176-C

Program Name: SGH-Z720 GSM1900 Left Slide Up(Job No. : FD-176)

Procedure Name: Cheek/Touch, Ch.661, Ant.Intenna, Bat.Standard

Procedure Notes: Meas.Tissue Temp(celsius)-22.0, Ambient Temp-22.3;Test Date-07/Sep/2006[OET Bulletin 65-Supplement C, July 2001]

Communication System: GSM 1900; Frequency: 1880 MHz;Duty Cycle: 1:8.3

Medium parameters used: $f = 1880$ MHz; $\sigma = 1.37$ mho/m; $\epsilon_r = 39.6$; $\rho = 1000$ kg/m³

Phantom section: Left Section

DASY4 Configuration:

- Probe: ES3DV3 - SN3080; ConvF(5, 5, 5); Calibrated: 2006-05-30
- Sensor-Surface: 4mm (Mechanical Surface Detection)
- Electronics: DAE4 Sn686; Calibrated: 2006-05-05
- Phantom: SAM PHANTOM #2; Type: SAM; Serial: TP-1248
- Measurement SW: DASY4, V4.7 Build 44; Postprocessing SW: SEMCAD, V1.8 Build 171

Cheek/Touch, Ch.661, Ant.Intenna, Bat.Standard/Area Scan (51x71x1): Measurement grid: dx=20mm, dy=20mm

Maximum value of SAR (interpolated) = 0.034 mW/g

Cheek/Touch, Ch.661, Ant.Intenna, Bat.Standard/Zoom Scan (5x5x7)/Cube 0:

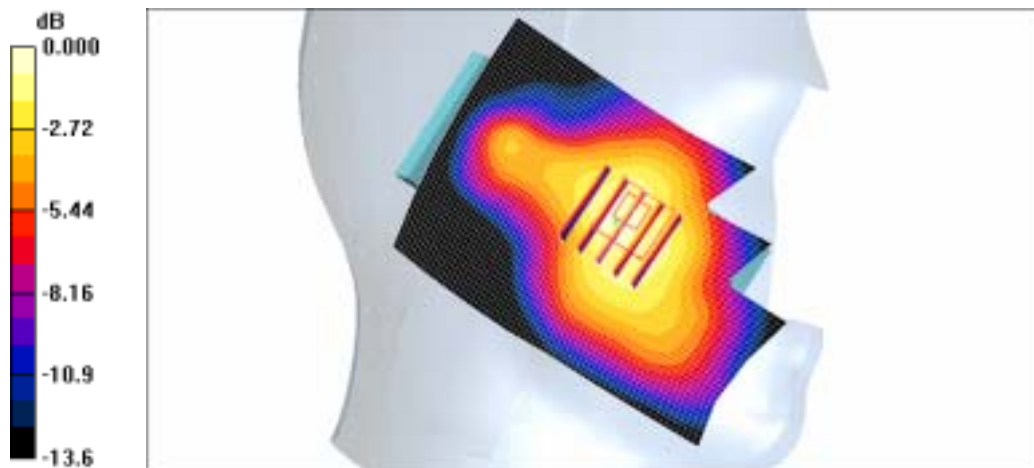
Measurement grid: dx=8mm, dy=8mm, dz=5mm

Reference Value = 4.85 V/m; Power Drift = 0.040 dB

Peak SAR (extrapolated) = 0.041 W/kg

SAR(1 g) = 0.032 mW/g

Maximum value of SAR (measured) = 0.035 mW/g



0 dB = 0.035mW/g

SAMSUNG FCC ID : A3LSGHZ720 1900MHz GSM1900 Head SAR

DUT: SGH-Z720(Up); Serial: FD-176-C

Program Name: SGH-Z720 GSM1900 Left Slide Up(Job No. : FD-176)

Procedure Name: Ear/Tilt, Ch.661, Ant.Intenna, Bat.Standard

Procedure Notes: Meas.Tissue Temp(celsius)-22.0, Ambient Temp-22.3;Test Date-07/Sep/2006[OET Bulletin 65-Supplement C, July 2001]

Communication System: GSM 1900; Frequency: 1880 MHz;Duty Cycle: 1:8.3

Medium parameters used: $f = 1880$ MHz; $\sigma = 1.37$ mho/m; $\epsilon_r = 39.6$; $\rho = 1000$ kg/m³

Phantom section: Left Section

DASY4 Configuration:

- Probe: ES3DV3 - SN3080; ConvF(5, 5, 5); Calibrated: 2006-05-30
- Sensor-Surface: 4mm (Mechanical Surface Detection)
- Electronics: DAE4 Sn686; Calibrated: 2006-05-05
- Phantom: SAM PHANTOM #2; Type: SAM; Serial: TP-1248
- Measurement SW: DASY4, V4.7 Build 44; Postprocessing SW: SEMCAD, V1.8 Build 171

Ear/Tilt, Ch.661, Ant.Intenna, Bat.Standard/Zoom Scan (5x5x7)/Cube 0: Measurement grid: dx=8mm, dy=8mm, dz=5mm

Reference Value = 1.74 V/m; Power Drift = -0.099 dB

Peak SAR (extrapolated) = 0.034 W/kg

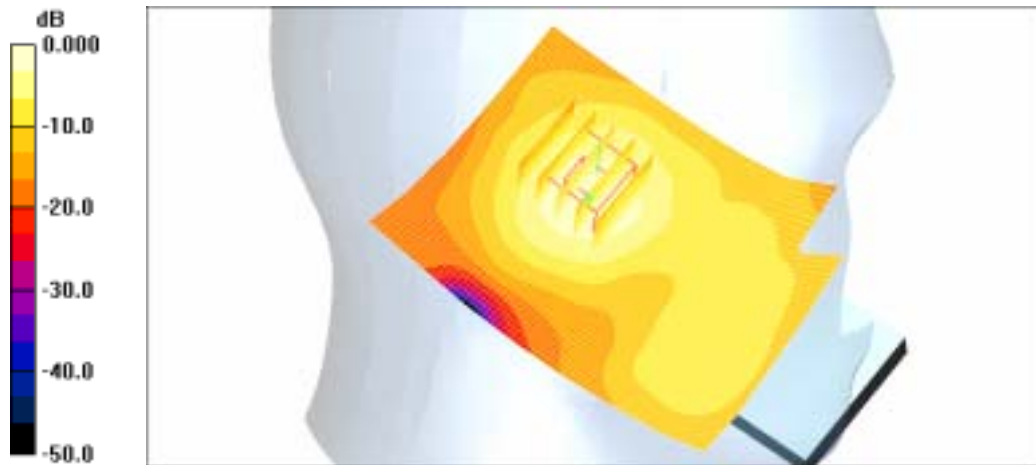
SAR(1 g) = 0.025 mW/g

Maximum value of SAR (measured) = 0.026 mW/g

Ear/Tilt, Ch.661, Ant.Intenna, Bat.Standard/Area Scan (51x71x1): Measurement grid:

dx=20mm, dy=20mm

Maximum value of SAR (interpolated) = 0.032 mW/g



0 dB = 0.032mW/g

SAMSUNG FCC ID : A3LSGHZ720 1900MHz GSM1900 Head SAR

DUT: SGH-Z720(Down); Serial: FD-176-C

Program Name: SGH-Z720 GSM1900 Right Slide Down(Job No. : FD-176)

Procedure Name: Cheek/Touch, Ch.810, Ant.Intenna, Bat.Standard

Procedure Notes: Meas.Tissue Temp(celsius)-22.0, Ambient Temp-22.3;Test Date-07/Sep/2006[OET Bulletin 65-Supplement C, July 2001]

Communication System: GSM 1900; Frequency: 1909.8 MHz;Duty Cycle: 1:8.3

Medium parameters used: $f = 1909.8$ MHz; $\sigma = 1.37$ mho/m; $\epsilon_r = 39.6$; $\rho = 1000$ kg/m³

Phantom section: Right Section

DASY4 Configuration:

- Probe: ES3DV3 - SN3080; ConvF(5, 5, 5); Calibrated: 2006-05-30
- Sensor-Surface: 4mm (Mechanical Surface Detection)
- Electronics: DAE4 Sn686; Calibrated: 2006-05-05
- Phantom: SAM PHANTOM #2; Type: SAM; Serial: TP-1248
- Measurement SW: DASY4, V4.7 Build 44; Postprocessing SW: SEMCAD, V1.8 Build 171

Cheek/Touch, Ch.810, Ant.Intenna, Bat.Standard/Area Scan (51x71x1): Measurement grid: dx=20mm, dy=20mm

Maximum value of SAR (interpolated) = 0.095 mW/g

Cheek/Touch, Ch.810, Ant.Intenna, Bat.Standard/Zoom Scan (5x5x7)/Cube 0:

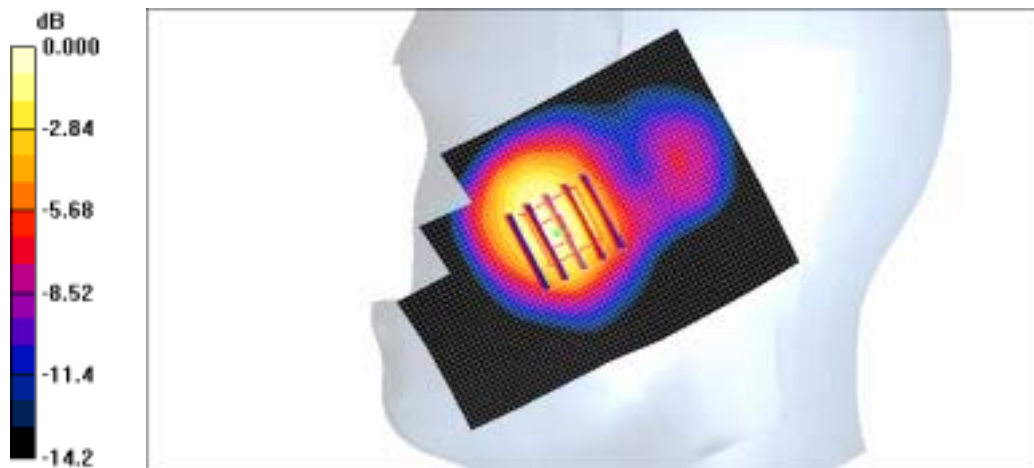
Measurement grid: dx=8mm, dy=8mm, dz=5mm

Reference Value = 8.49 V/m; Power Drift = 0.167 dB

Peak SAR (extrapolated) = 0.133 W/kg

SAR(1 g) = 0.102 mW/g

Maximum value of SAR (measured) = 0.109 mW/g



0 dB = 0.109mW/g

SAMSUNG FCC ID : A3LSGHZ720 1900MHz GSM1900 Head SAR

DUT: SGH-Z720(Down); Serial: FD-176-C

Program Name: SGH-Z720 GSM1900 Right Slide Down(Job No. : FD-176)

Procedure Name: Ear/Tilt, Ch.661, Ant.Intenna, Bat.Standard

Procedure Notes: Meas.Tissue Temp(celsius)-22.0, Ambient Temp-22.3;Test Date-07/Sep/2006[OET Bulletin 65-Supplement C, July 2001]

Communication System: GSM 1900; Frequency: 1880 MHz;Duty Cycle: 1:8.3

Medium parameters used: $f = 1880$ MHz; $\sigma = 1.37$ mho/m; $\epsilon_r = 39.6$; $\rho = 1000$ kg/m³

Phantom section: Right Section

DASY4 Configuration:

- Probe: ES3DV3 - SN3080; ConvF(5, 5, 5); Calibrated: 2006-05-30
- Sensor-Surface: 4mm (Mechanical Surface Detection)
- Electronics: DAE4 Sn686; Calibrated: 2006-05-05
- Phantom: SAM PHANTOM #2; Type: SAM; Serial: TP-1248
- Measurement SW: DASY4, V4.7 Build 44; Postprocessing SW: SEMCAD, V1.8 Build 171

Ear/Tilt, Ch.661, Ant.Intenna, Bat.Standard/Area Scan (51x71x1): Measurement grid: dx=20mm, dy=20mm

Maximum value of SAR (interpolated) = 0.022 mW/g

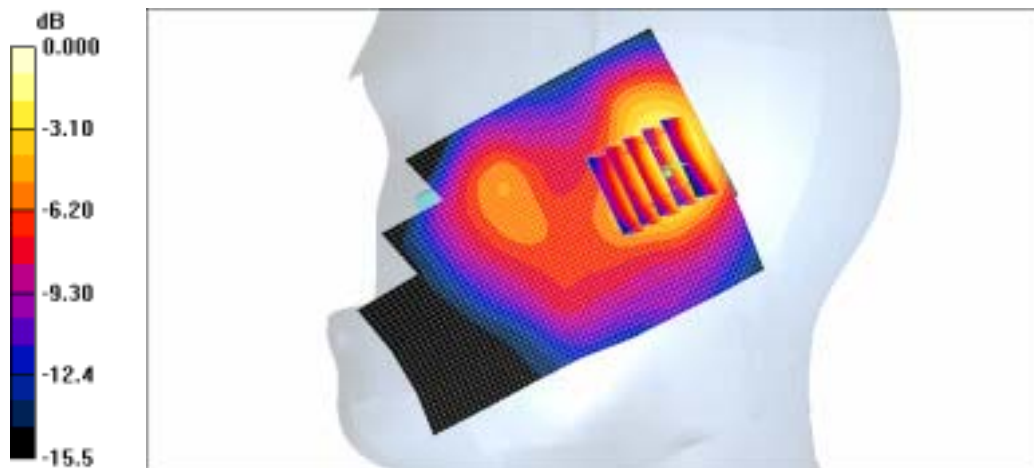
Ear/Tilt, Ch.661, Ant.Intenna, Bat.Standard/Zoom Scan (5x5x7)/Cube 0: Measurement grid: dx=8mm, dy=8mm, dz=5mm

Reference Value = 4.05 V/m; Power Drift = -0.154 dB

Peak SAR (extrapolated) = 0.032 W/kg

SAR(1 g) = 0.025 mW/g

Maximum value of SAR (measured) = 0.025 mW/g



0 dB = 0.025mW/g

SAMSUNG FCC ID : A3LSGHZ720 1900MHz GSM1900 Head SAR

DUT: SGH-Z720(Down); Serial: FD-176-C

Program Name: SGH-Z720 GSM1900 Left Slide Down(Job No. : FD-176)

Procedure Name: Cheek/Touch, Ch.661, Ant.Intenna, Bat.Standard

Procedure Notes: Meas.Tissue Temp(celsius)-22.0, Ambient Temp-22.3;Test Date-07/Sep/2006[OET Bulletin 65-Supplement C, July 2001]

Communication System: GSM 1900; Frequency: 1880 MHz;Duty Cycle: 1:8.3

Medium parameters used: $f = 1880$ MHz; $\sigma = 1.37$ mho/m; $\epsilon_r = 39.6$; $\rho = 1000$ kg/m³

Phantom section: Left Section

DASY4 Configuration:

- Probe: ES3DV3 - SN3080; ConvF(5, 5, 5); Calibrated: 2006-05-30
- Sensor-Surface: 4mm (Mechanical Surface Detection)
- Electronics: DAE4 Sn686; Calibrated: 2006-05-05
- Phantom: SAM PHANTOM #2; Type: SAM; Serial: TP-1248
- Measurement SW: DASY4, V4.7 Build 44; Postprocessing SW: SEMCAD, V1.8 Build 171

Cheek/Touch, Ch.661, Ant.Intenna, Bat.Standard/Area Scan (51x71x1): Measurement grid: dx=20mm, dy=20mm

Maximum value of SAR (interpolated) = 0.076 mW/g

Cheek/Touch, Ch.661, Ant.Intenna, Bat.Standard/Zoom Scan (5x5x7)/Cube 0:

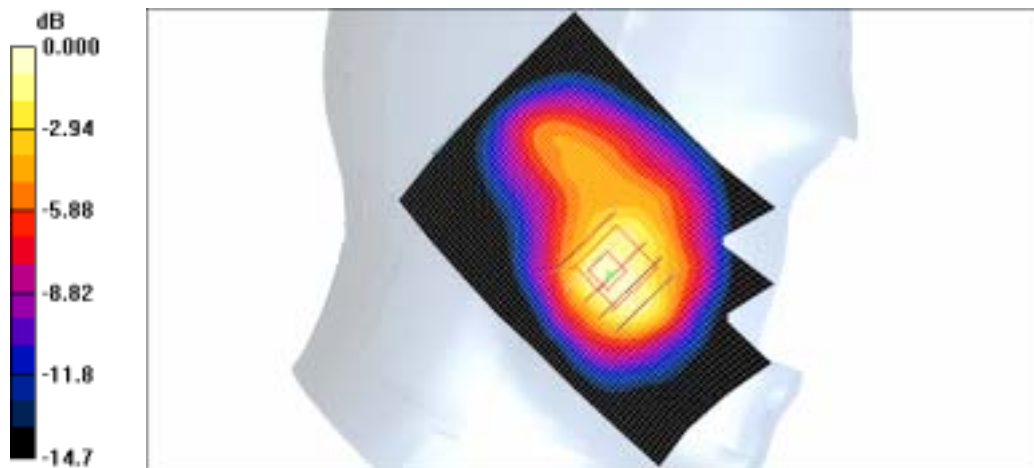
Measurement grid: dx=8mm, dy=8mm, dz=5mm

Reference Value = 6.64 V/m; Power Drift = -0.055 dB

Peak SAR (extrapolated) = 0.098 W/kg

SAR(1 g) = 0.071 mW/g

Maximum value of SAR (measured) = 0.079 mW/g



0 dB = 0.079mW/g

SAMSUNG FCC ID : A3LSGHZ720 1900MHz GSM1900 Head SAR

DUT: SGH-Z720(Down); Serial: FD-176-C

Program Name: SGH-Z720 GSM1900 Left Slide Down(Job No. : FD-176)

Procedure Name: Ear/Tilt, Ch.661, Ant.Intenna, Bat.Standard

Procedure Notes: Meas.Tissue Temp(celsius)-22.0, Ambient Temp-22.3;Test Date-07/Sep/2006[OET Bulletin 65-Supplement C, July 2001]

Communication System: GSM 1900; Frequency: 1880 MHz;Duty Cycle: 1:8.3

Medium parameters used: $f = 1880$ MHz; $\sigma = 1.37$ mho/m; $\epsilon_r = 39.6$; $\rho = 1000$ kg/m³

Phantom section: Left Section

DASY4 Configuration:

- Probe: ES3DV3 - SN3080; ConvF(5, 5, 5); Calibrated: 2006-05-30
- Sensor-Surface: 4mm (Mechanical Surface Detection)
- Electronics: DAE4 Sn686; Calibrated: 2006-05-05
- Phantom: SAM PHANTOM #2; Type: SAM; Serial: TP-1248
- Measurement SW: DASY4, V4.7 Build 44; Postprocessing SW: SEMCAD, V1.8 Build 171

Ear/Tilt, Ch.661, Ant.Intenna, Bat.Standard/Zoom Scan (5x5x7)/Cube 0: Measurement grid: dx=8mm, dy=8mm, dz=5mm

Reference Value = 2.46 V/m; Power Drift = 0.119 dB

Peak SAR (extrapolated) = 0.036 W/kg

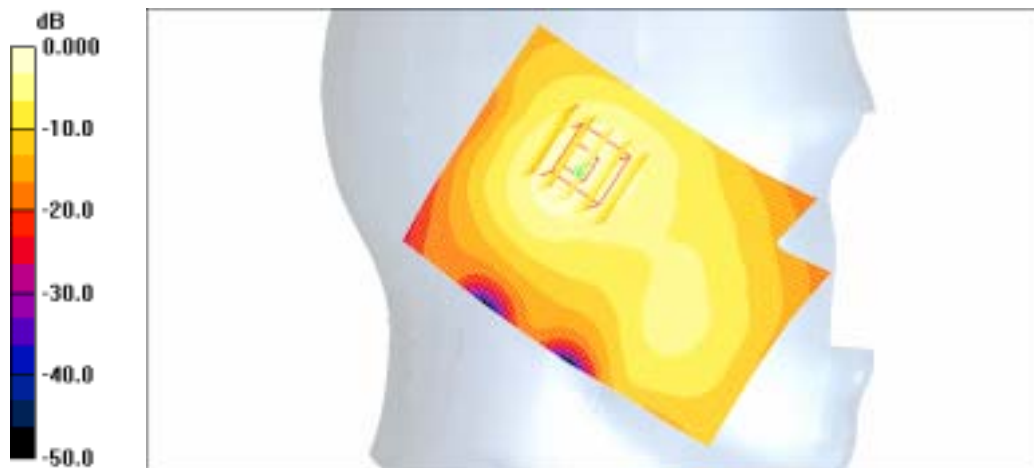
SAR(1 g) = 0.026 mW/g

Maximum value of SAR (measured) = 0.028 mW/g

Ear/Tilt, Ch.661, Ant.Intenna, Bat.Standard/Area Scan (51x71x1): Measurement grid:

dx=20mm, dy=20mm

Maximum value of SAR (interpolated) = 0.029 mW/g



0 dB = 0.029mW/g

SAMSUNG FCC ID : A3LSGHZ720 1900MHz GSM1900 Body SAR

DUT: SGH-Z720(Body); Serial: FD-176-C

Program Name: SGH-Z720 GPRS1900 Body (Job No. : FD-176)

Procedure Name: Body, Ch.810, Ant.Intenna, Bat.Standard With BT On

Procedure Notes: Meas.Tissue Temp(celsius)-21.5, Ambient Temp-21.8;Test Date-07/Sep/2006[OET Bulletin 65-Supplement C, July 2001]

Communication System: GSM1900 GPRS; Frequency: 1909.8 MHz;Duty Cycle: 1:4.15
Medium parameters used: $f = 1909.8$ MHz; $\sigma = 1.53$ mho/m; $\epsilon_r = 52.5$; $\rho = 1000$ kg/m³

Phantom section: Flat Section

DASY4 Configuration:

- Probe: ES3DV3 - SN3080; ConvF(4.5, 4.5, 4.5); Calibrated: 2006-05-30
- Sensor-Surface: 4mm (Mechanical Surface Detection)
- Electronics: DAE4 Sn686; Calibrated: 2006-05-05
- Phantom: SAM PHANTOM #1; Type: SAM; Serial: TP-1247
- Measurement SW: DASY4, V4.7 Build 44; Postprocessing SW: SEMCAD, V1.8 Build 171

Body, Ch.810, Ant.Intenna, Bat.Standard With BT On/Area Scan (51x71x1):

Measurement grid: dx=20mm, dy=20mm

Maximum value of SAR (interpolated) = 0.111 mW/g

Body, Ch.810, Ant.Intenna, Bat.Standard With BT On/Zoom Scan (5x5x7)/Cube 0:

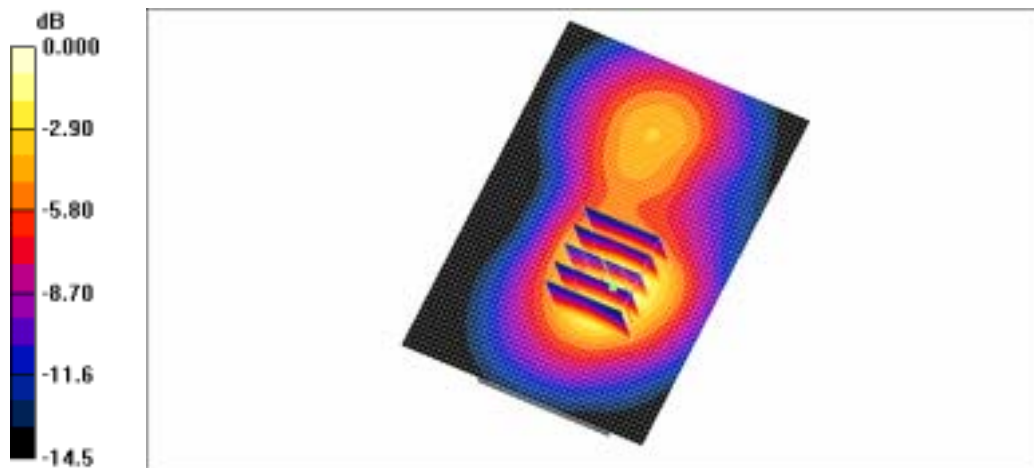
Measurement grid: dx=8mm, dy=8mm, dz=5mm

Reference Value = 5.45 V/m; Power Drift = 0.033 dB

Peak SAR (extrapolated) = 0.152 W/kg

SAR(1 g) = 0.100 mW/g

Maximum value of SAR (measured) = 0.110 mW/g



0 dB = 0.110mW/g

SAMSUNG FCC ID : A3LSGHZ720 1900MHz GSM1900 Head SAR

DUT: SGH-Z720(Down); Serial: FD-176-C

Program Name: SGH-Z720 GSM1900 Right Slide Down(Job No. : FD-176)

Procedure Name: Cheek/Touch, Ch.810, Ant.Intenna, Bat.Standard

Procedure Notes: Meas.Tissue Temp(celsius)-22.0, Ambient Temp-22.3;Test Date-07/Sep/2006[OET Bulletin 65-Supplement C, July 2001]

Communication System: GSM 1900; Frequency: 1909.8 MHz;Duty Cycle: 1:8.3

Medium parameters used: $f = 1909.8$ MHz; $\sigma = 1.37$ mho/m; $\epsilon_r = 39.6$; $\rho = 1000$ kg/m³

Phantom section: Right Section

DASY4 Configuration:

- Probe: ES3DV3 - SN3080; ConvF(5, 5, 5); Calibrated: 2006-05-30
- Sensor-Surface: 4mm (Mechanical Surface Detection)
- Electronics: DAE4 Sn686; Calibrated: 2006-05-05
- Phantom: SAM PHANTOM #2; Type: SAM; Serial: TP-1248
- Measurement SW: DASY4, V4.7 Build 44; Postprocessing SW: SEMCAD, V1.8 Build 171

Cheek/Touch, Ch.810, Ant.Intenna, Bat.Standard/Area Scan (51x71x1): Measurement grid: dx=20mm, dy=20mm

Maximum value of SAR (interpolated) = 0.095 mW/g

Cheek/Touch, Ch.810, Ant.Intenna, Bat.Standard/Zoom Scan (5x5x7)/Cube 0:

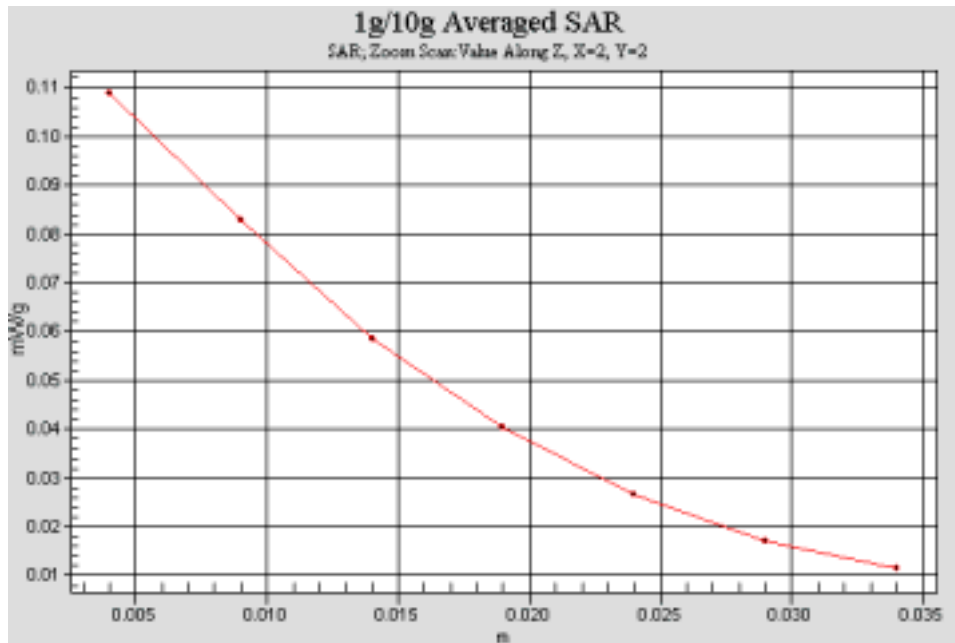
Measurement grid: dx=8mm, dy=8mm, dz=5mm

Reference Value = 8.49 V/m; Power Drift = 0.167 dB

Peak SAR (extrapolated) = 0.133 W/kg

SAR(1 g) = 0.102 mW/g

Maximum value of SAR (measured) = 0.109 mW/g



SAMSUNG FCC ID : A3LSGHZ720 1900MHz GSM1900 Body SAR

DUT: SGH-Z720(Body); Serial: FD-176-C

Program Name: SGH-Z720 GPRS1900 Body (Job No. : FD-176)

Procedure Name: Body, Ch.810, Ant.Intenna, Bat.Standard With BT On

Procedure Notes: Meas.Tissue Temp(celsius)-21.5, Ambient Temp-21.8;Test Date-07/Sep/2006[OET Bulletin 65-Supplement C, July 2001]

Communication System: GSM1900 GPRS; Frequency: 1909.8 MHz;Duty Cycle: 1:4.15
Medium parameters used: $f = 1909.8$ MHz; $\sigma = 1.53$ mho/m; $\epsilon_r = 52.5$; $\rho = 1000$ kg/m³

Phantom section: Flat Section

DASY4 Configuration:

- Probe: ES3DV3 - SN3080; ConvF(4.5, 4.5, 4.5); Calibrated: 2006-05-30
- Sensor-Surface: 4mm (Mechanical Surface Detection)
- Electronics: DAE4 Sn686; Calibrated: 2006-05-05
- Phantom: SAM PHANTOM #1; Type: SAM; Serial: TP-1247
- Measurement SW: DASY4, V4.7 Build 44; Postprocessing SW: SEMCAD, V1.8 Build 171

Body, Ch.810, Ant.Intenna, Bat.Standard With BT On/Area Scan (51x71x1):

Measurement grid: dx=20mm, dy=20mm

Maximum value of SAR (interpolated) = 0.111 mW/g

Body, Ch.810, Ant.Intenna, Bat.Standard With BT On/Zoom Scan (5x5x7)/Cube 0:

Measurement grid: dx=8mm, dy=8mm, dz=5mm

Reference Value = 5.45 V/m; Power Drift = 0.033 dB

Peak SAR (extrapolated) = 0.152 W/kg

SAR(1 g) = 0.100 mW/g

Maximum value of SAR (measured) = 0.110 mW/g

