

SAMSUNG FCC ID : A3LSGHZ630 1900MHz GSM1900 Head SAR

DUT: SGH-Z630(down); Serial: FD-074-A

Program Name: SGH-Z630 GSM1900 Right Slide.Down (Job No. : FD-074)

Procedure Name: Cheek/Touch, Ch.512, Ant.Intenna, Bat.Standard

Procedure Notes: Meas.Tissue Temp(celsius)-22.1, Ambient Temp-22.3;Test Date-09/May/2006[OET Bulletin 65-Supplement C, July 2001]

Communication System: GSM 1900; Frequency: 1850.2 MHz;Duty Cycle: 1:8.3

Medium parameters used: $f = 1850.2$ MHz; $\sigma = 1.41$ mho/m; $\epsilon_r = 39.7$; $\rho = 1000$ kg/m³

Phantom section: Right Section

DASY4 Configuration:

- Probe: EX3DV4 - SN3537; ConvF(8.04, 8.04, 8.04); Calibrated: 2005-11-22
- Sensor-Surface: 4mm (Mechanical Surface Detection)
- Electronics: DAE3 Sn468; Calibrated: 2006-01-27
- Phantom: SAM PHANTOM #2; Type: SAM; Serial: TP-1248
- Measurement SW: DASY4, V4.6 Build 23; Postprocessing SW: SEMCAD, V1.8 Build 160

Cheek/Touch, Ch.512, Ant.Intenna, Bat.Standard/Area Scan (51x71x1): Measurement grid: dx=20mm, dy=20mm

Maximum value of SAR (interpolated) = 0.864 mW/g

Cheek/Touch, Ch.512, Ant.Intenna, Bat.Standard/Zoom Scan (5x5x7)/Cube 0:

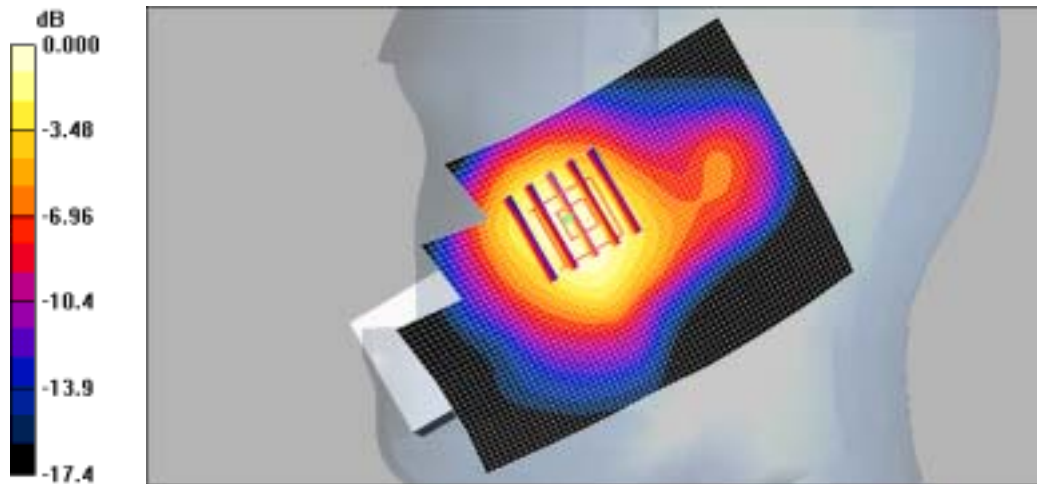
Measurement grid: dx=8mm, dy=8mm, dz=5mm

Reference Value = 9.27 V/m; Power Drift = 0.127 dB

Peak SAR (extrapolated) = 1.22 W/kg

SAR(1 g) = 0.819 mW/g

Maximum value of SAR (measured) = 0.867 mW/g



0 dB = 0.867mW/g

SAMSUNG FCC ID : A3LSGHZ630 1900MHz GSM1900 Head SAR

DUT: SGH-Z630(down); Serial: FD-074-A

Program Name: SGH-Z630 GSM1900 Right Slide.Down (Job No. : FD-074)

Procedure Name: Ear/Tilt, Ch.661, Ant.Intenna, Bat.Standard

Procedure Notes: Meas.Tissue Temp(celsius)-22.1, Ambient Temp-22.3;Test Date-09/May/2006[OET Bulletin 65-Supplement C, July 2001]

Communication System: GSM 1900; Frequency: 1880 MHz;Duty Cycle: 1:8.3

Medium parameters used: $f = 1880$ MHz; $\sigma = 1.41$ mho/m; $\epsilon_r = 39.7$; $\rho = 1000$ kg/m³

Phantom section: Right Section

DASY4 Configuration:

- Probe: EX3DV4 - SN3537; ConvF(8.04, 8.04, 8.04); Calibrated: 2005-11-22
- Sensor-Surface: 4mm (Mechanical Surface Detection)
- Electronics: DAE3 Sn468; Calibrated: 2006-01-27
- Phantom: SAM PHANTOM #2; Type: SAM; Serial: TP-1248
- Measurement SW: DASY4, V4.6 Build 23; Postprocessing SW: SEMCAD, V1.8 Build 160

Ear/Tilt, Ch.661, Ant.Intenna, Bat.Standard/Zoom Scan (5x5x7)/Cube 0: Measurement grid: dx=8mm, dy=8mm, dz=5mm

Reference Value = 11.0 V/m; Power Drift = 0.047 dB

Peak SAR (extrapolated) = 0.287 W/kg

SAR(1 g) = 0.190 mW/g

Maximum value of SAR (measured) = 0.205 mW/g

Ear/Tilt, Ch.661, Ant.Intenna, Bat.Standard/Area Scan (51x71x1): Measurement grid:

dx=20mm, dy=20mm

Maximum value of SAR (interpolated) = 0.235 mW/g



0 dB = 0.235mW/g

SAMSUNG FCC ID : A3LSGHZ630 1900MHz GSM1900 Head SAR

DUT: SGH-Z630(Up); Serial: FD-074-A

Program Name: SGH-Z630 GSM1900 Right Slide_Up(Job No. : FD-074)

Procedure Name: Cheek/Touch, Ch.512, Ant.Intenna, Bat.Standard

Procedure Notes: Meas.Tissue Temp(celsius)-22.1, Ambient Temp-22.3;Test Date-09/May/2006[OET Bulletin 65-Supplement C, July 2001]

Communication System: GSM 1900; Frequency: 1850.2 MHz;Duty Cycle: 1:8.3

Medium parameters used: $f = 1850.2$ MHz; $\sigma = 1.41$ mho/m; $\epsilon_r = 39.7$; $\rho = 1000$ kg/m³

Phantom section: Right Section

DASY4 Configuration:

- Probe: EX3DV4 - SN3537; ConvF(8.04, 8.04, 8.04); Calibrated: 2005-11-22
- Sensor-Surface: 4mm (Mechanical Surface Detection)
- Electronics: DAE3 Sn468; Calibrated: 2006-01-27
- Phantom: SAM PHANTOM #2; Type: SAM; Serial: TP-1248
- Measurement SW: DASY4, V4.6 Build 23; Postprocessing SW: SEMCAD, V1.8 Build 160

Cheek/Touch, Ch.512, Ant.Intenna, Bat.Standard/Area Scan (51x71x1): Measurement grid: dx=20mm, dy=20mm

Maximum value of SAR (interpolated) = 0.477 mW/g

Cheek/Touch, Ch.512, Ant.Intenna, Bat.Standard/Zoom Scan (5x5x7)/Cube 0:

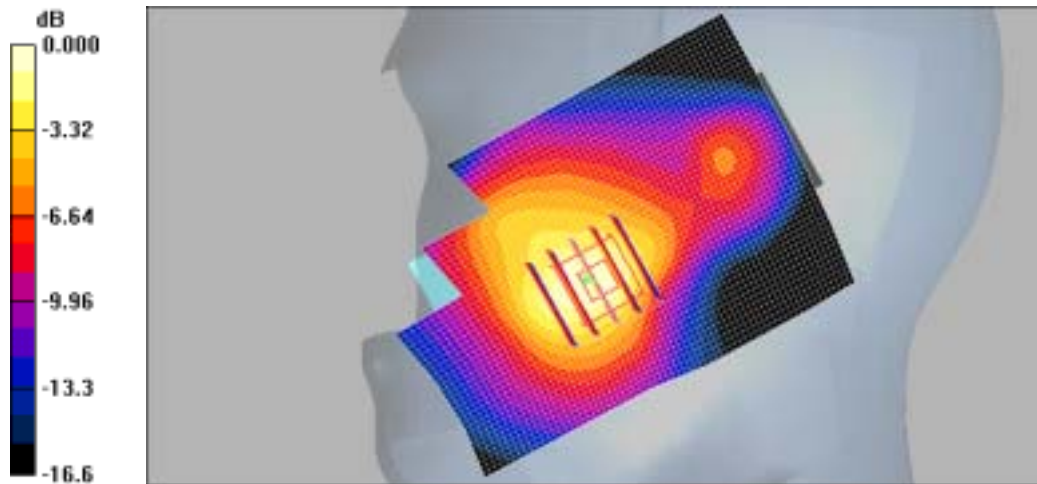
Measurement grid: dx=8mm, dy=8mm, dz=5mm

Reference Value = 6.87 V/m; Power Drift = -0.002 dB

Peak SAR (extrapolated) = 0.628 W/kg

SAR(1 g) = 0.411 mW/g

Maximum value of SAR (measured) = 0.440 mW/g



0 dB = 0.440mW/g

SAMSUNG FCC ID : A3LSGHZ630 1900MHz GSM1900 Head SAR

DUT: SGH-Z630(Up); Serial: FD-074-A

Program Name: SGH-Z630 GSM1900 Right Slide_Up(Job No. : FD-074)

Procedure Name: Ear/Tilt, Ch.661, Ant.Intenna, Bat.Standard

Procedure Notes: Meas.Tissue Temp(celsius)-22.1, Ambient Temp-22.3;Test Date-09/May/2006[OET Bulletin 65-Supplement C, July 2001]

Communication System: GSM 1900; Frequency: 1880 MHz;Duty Cycle: 1:8.3

Medium parameters used: $f = 1880$ MHz; $\sigma = 1.41$ mho/m; $\epsilon_r = 39.7$; $\rho = 1000$ kg/m³

Phantom section: Right Section

DASY4 Configuration:

- Probe: EX3DV4 - SN3537; ConvF(8.04, 8.04, 8.04); Calibrated: 2005-11-22
- Sensor-Surface: 4mm (Mechanical Surface Detection)
- Electronics: DAE3 Sn468; Calibrated: 2006-01-27
- Phantom: SAM PHANTOM #2; Type: SAM; Serial: TP-1248
- Measurement SW: DASY4, V4.6 Build 23; Postprocessing SW: SEMCAD, V1.8 Build 160

Ear/Tilt, Ch.661, Ant.Intenna, Bat.Standard/Zoom Scan (5x5x7)/Cube 0: Measurement grid: dx=8mm, dy=8mm, dz=5mm

Reference Value = 11.1 V/m; Power Drift = -0.019 dB

Peak SAR (extrapolated) = 0.257 W/kg

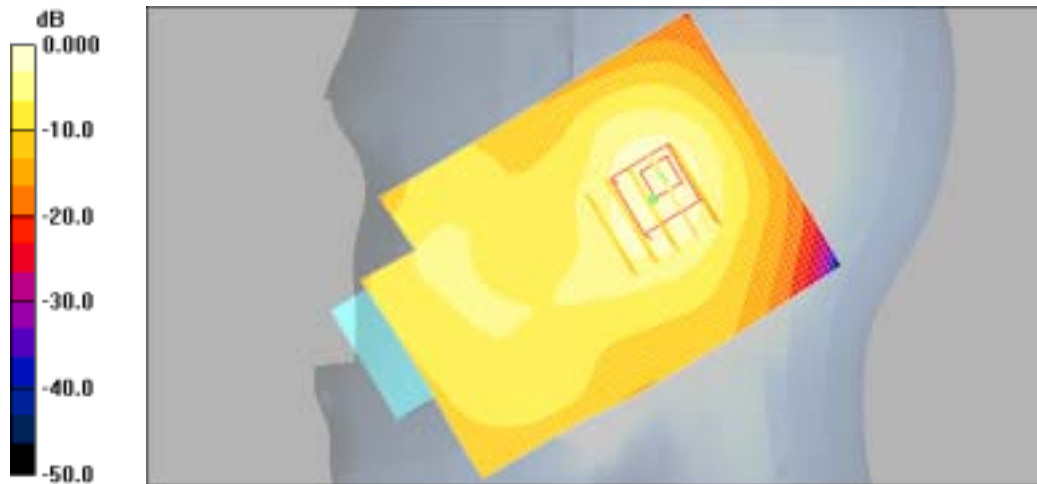
SAR(1 g) = 0.172 mW/g

Maximum value of SAR (measured) = 0.185 mW/g

Ear/Tilt, Ch.661, Ant.Intenna, Bat.Standard/Area Scan (51x71x1): Measurement grid:

dx=20mm, dy=20mm

Maximum value of SAR (interpolated) = 0.207 mW/g



0 dB = 0.207mW/g

SAMSUNG FCC ID : A3LSGHZ630 1900MHz GSM1900 Head SAR

DUT: SGH-Z630; Serial: FD-074-A

Program Name: SGH-Z630 GSM1900 Left Slide_down (Job No. : FD-074)

Procedure Name: Cheek/Touch, Ch.512, Ant.Intenna, Bat.Standard

Procedure Notes: Meas.Tissue Temp(celsius)-22.1, Ambient Temp-22.3;Test Date-09/May/2006[OET Bulletin 65-Supplement C, July 2001]

Communication System: GSM 1900; Frequency: 1850.2 MHz;Duty Cycle: 1:8.3

Medium parameters used: $f = 1850.2$ MHz; $\sigma = 1.41$ mho/m; $\epsilon_r = 39.7$; $\rho = 1000$ kg/m³

Phantom section: Left Section

DASY4 Configuration:

- Probe: EX3DV4 - SN3537; ConvF(8.04, 8.04, 8.04); Calibrated: 2005-11-22
- Sensor-Surface: 4mm (Mechanical Surface Detection)
- Electronics: DAE3 Sn468; Calibrated: 2006-01-27
- Phantom: SAM PHANTOM #2; Type: SAM; Serial: TP-1248
- Measurement SW: DASY4, V4.6 Build 23; Postprocessing SW: SEMCAD, V1.8 Build 160

Cheek/Touch, Ch.512, Ant.Intenna, Bat.Standard/Zoom Scan (5x5x7)/Cube 0:

Measurement grid: dx=8mm, dy=8mm, dz=5mm

Reference Value = 8.11 V/m; Power Drift = -0.097 dB

Peak SAR (extrapolated) = 1.81 W/kg

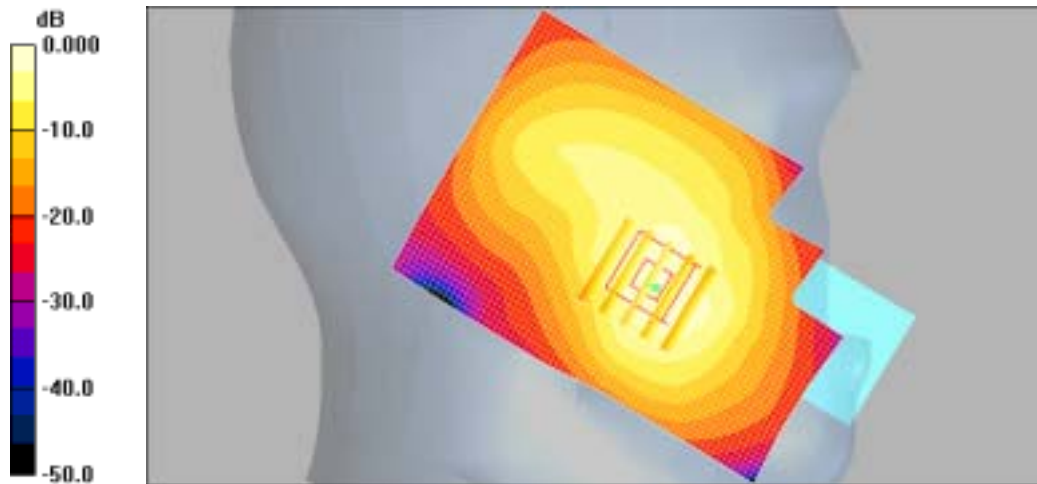
SAR(1 g) = 1.15 mW/g

Maximum value of SAR (measured) = 1.25 mW/g

Cheek/Touch, Ch.512, Ant.Intenna, Bat.Standard/Area Scan (51x71x1): Measurement

grid: dx=20mm, dy=20mm

Maximum value of SAR (interpolated) = 1.25 mW/g



0 dB = 1.25mW/g

SAMSUNG FCC ID : A3LSGHZ630 1900MHz GSM1900 Head SAR

DUT: SGH-Z630; Serial: FD-074-A

Program Name: SGH-Z630 GSM1900 Left Slide_down (Job No. : FD-074)

Procedure Name: Ear/Tilt, Ch.661, Ant.Intenna, Bat.Standard

Procedure Notes: Meas.Tissue Temp(celsius)-22.1, Ambient Temp-22.3;Test Date-09/May/2006[OET Bulletin 65-Supplement C, July 2001]

Communication System: GSM 1900; Frequency: 1880 MHz;Duty Cycle: 1:8.3

Medium parameters used: $f = 1880$ MHz; $\sigma = 1.41$ mho/m; $\epsilon_r = 39.7$; $\rho = 1000$ kg/m³

Phantom section: Left Section

DASY4 Configuration:

- Probe: EX3DV4 - SN3537; ConvF(8.04, 8.04, 8.04); Calibrated: 2005-11-22
- Sensor-Surface: 4mm (Mechanical Surface Detection)
- Electronics: DAE3 Sn468; Calibrated: 2006-01-27
- Phantom: SAM PHANTOM #2; Type: SAM; Serial: TP-1248
- Measurement SW: DASY4, V4.6 Build 23; Postprocessing SW: SEMCAD, V1.8 Build 160

Ear/Tilt, Ch.661, Ant.Intenna, Bat.Standard/Area Scan (51x71x1): Measurement grid:

$dx=20$ mm, $dy=20$ mm

Maximum value of SAR (interpolated) = 0.323 mW/g

Ear/Tilt, Ch.661, Ant.Intenna, Bat.Standard/Zoom Scan (5x5x7)/Cube 0: Measurement

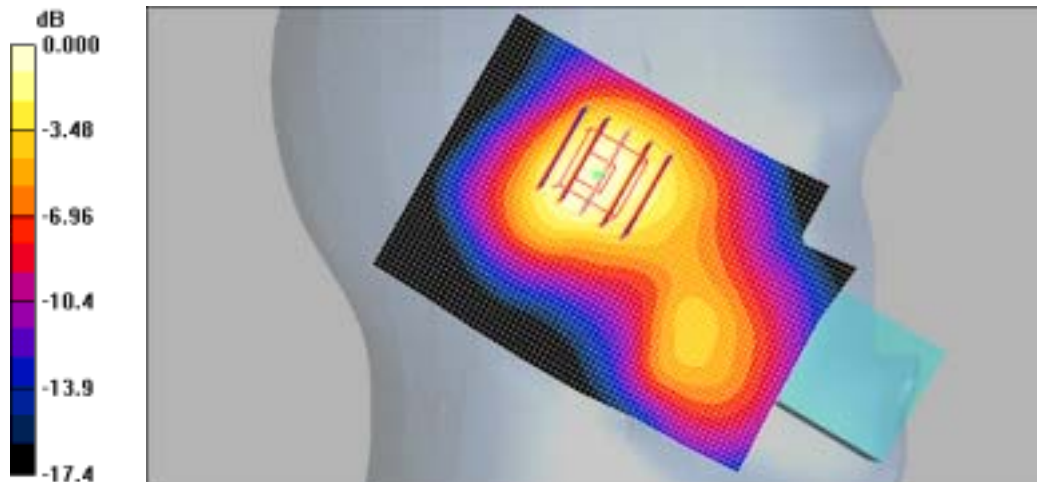
grid: $dx=8$ mm, $dy=8$ mm, $dz=5$ mm

Reference Value = 11.5 V/m; Power Drift = -0.044 dB

Peak SAR (extrapolated) = 0.388 W/kg

SAR(1 g) = 0.265 mW/g

Maximum value of SAR (measured) = 0.286 mW/g



0 dB = 0.286mW/g

SAMSUNG FCC ID : A3LSGHZ630 1900MHz GSM1900 Head SAR

DUT: SGH-Z630; Serial: FD-074-A

Program Name: SGH-Z630 GSM1900 Left Slide_down (Job No. : FD-074)

Procedure Name: Cheek/Touch, Ch.512, Ant.Intenna, Bat.Standard With BT ON

Procedure Notes: Meas.Tissue Temp(celsius)-22.1, Ambient Temp-22.3;Test Date-09/May/2006[OET Bulletin 65-Supplement C, July 2001]

Communication System: GSM 1900; Frequency: 1850.2 MHz;Duty Cycle: 1:8.3

Medium parameters used: $f = 1850.2$ MHz; $\sigma = 1.41$ mho/m; $\epsilon_r = 39.7$; $\rho = 1000$ kg/m³

Phantom section: Left Section

DASY4 Configuration:

- Probe: EX3DV4 - SN3537; ConvF(8.04, 8.04, 8.04); Calibrated: 2005-11-22
- Sensor-Surface: 4mm (Mechanical Surface Detection)
- Electronics: DAE3 Sn468; Calibrated: 2006-01-27
- Phantom: SAM PHANTOM #2; Type: SAM; Serial: TP-1248
- Measurement SW: DASY4, V4.6 Build 23; Postprocessing SW: SEMCAD, V1.8 Build 160

Cheek/Touch, Ch.512, Ant.Intenna, Bat.Standard With BT ON/Zoom Scan (5x5x7)/Cube

0: Measurement grid: dx=8mm, dy=8mm, dz=5mm

Reference Value = 7.64 V/m; Power Drift = -0.077 dB

Peak SAR (extrapolated) = 1.60 W/kg

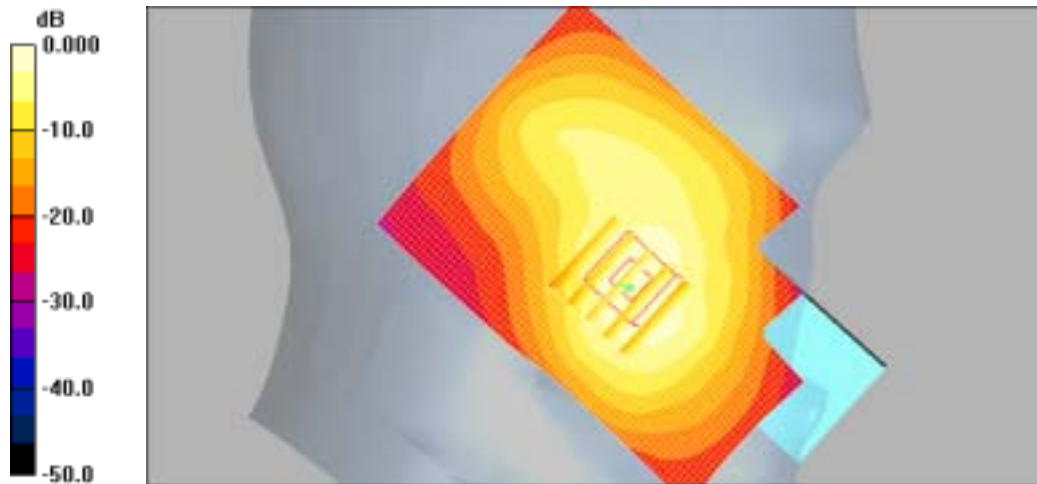
SAR(1 g) = 1.04 mW/g

Maximum value of SAR (measured) = 1.12 mW/g

Cheek/Touch, Ch.512, Ant.Intenna, Bat.Standard With BT ON/Area Scan (51x71x1):

Measurement grid: dx=20mm, dy=20mm

Maximum value of SAR (interpolated) = 1.11 mW/g



0 dB = 1.11mW/g

SAMSUNG FCC ID : A3LSGHZ630 1900MHz GSM1900 Head SAR

DUT: SGH-Z630; Serial: FD-074-A

Program Name: SGH-Z630 GSM1900 Left Slide_Up(Job No. : FD-074)

Procedure Name: Cheek/Touch, Ch.512, Ant.Intenna, Bat.Standard

Procedure Notes: Meas.Tissue Temp(celsius)-22.1, Ambient Temp-22.3;Test Date-09/May/2006[OET Bulletin 65-Supplement C, July 2001]

Communication System: GSM 1900; Frequency: 1850.2 MHz;Duty Cycle: 1:8.3

Medium parameters used: $f = 1850.2$ MHz; $\sigma = 1.41$ mho/m; $\epsilon_r = 39.7$; $\rho = 1000$ kg/m³

Phantom section: Left Section

DASY4 Configuration:

- Probe: EX3DV4 - SN3537; ConvF(8.04, 8.04, 8.04); Calibrated: 2005-11-22
- Sensor-Surface: 4mm (Mechanical Surface Detection)
- Electronics: DAE3 Sn468; Calibrated: 2006-01-27
- Phantom: SAM PHANTOM #2; Type: SAM; Serial: TP-1248
- Measurement SW: DASY4, V4.6 Build 23; Postprocessing SW: SEMCAD, V1.8 Build 160

Cheek/Touch, Ch.512, Ant.Intenna, Bat.Standard/Zoom Scan (5x5x7)/Cube 0:

Measurement grid: dx=8mm, dy=8mm, dz=5mm

Reference Value = 5.98 V/m; Power Drift = 0.042 dB

Peak SAR (extrapolated) = 0.413 W/kg

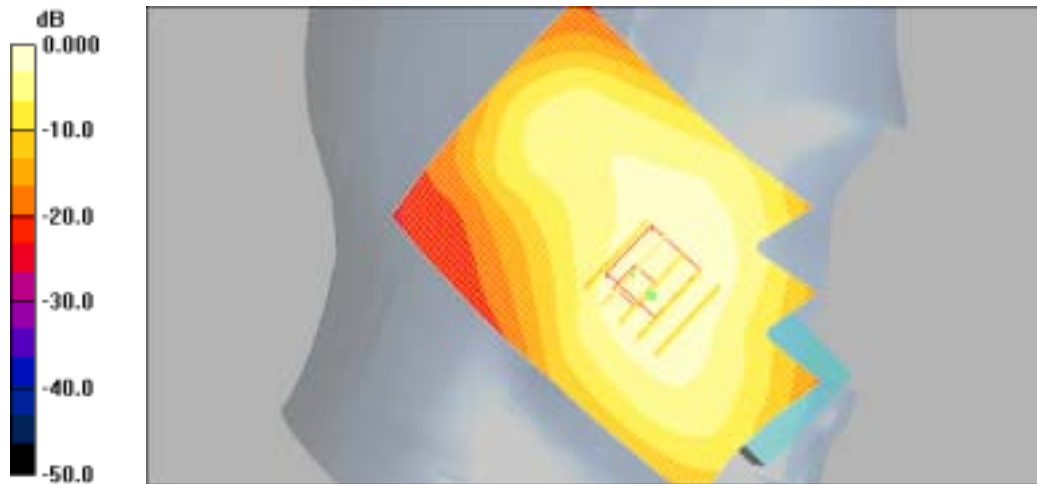
SAR(1 g) = 0.273 mW/g

Maximum value of SAR (measured) = 0.291 mW/g

Cheek/Touch, Ch.512, Ant.Intenna, Bat.Standard/Area Scan (51x71x1): Measurement

grid: dx=20mm, dy=20mm

Maximum value of SAR (interpolated) = 0.329 mW/g



0 dB = 0.329mW/g

SAMSUNG FCC ID : A3LSGHZ630 1900MHz GSM1900 Head SAR

DUT: SGH-Z630; Serial: FD-074-A

Program Name: SGH-Z630 GSM1900 Left Slide_Up(Job No. : FD-074)

Procedure Name: Ear/Tilt, Ch.661, Ant.Intenna, Bat.Standard

Procedure Notes: Meas.Tissue Temp(celsius)-22.1, Ambient Temp-22.3;Test Date-09/May/2006[OET Bulletin 65-Supplement C, July 2001]

Communication System: GSM 1900; Frequency: 1880 MHz;Duty Cycle: 1:8.3

Medium parameters used: $f = 1880$ MHz; $\sigma = 1.41$ mho/m; $\epsilon_r = 39.7$; $\rho = 1000$ kg/m³

Phantom section: Left Section

DASY4 Configuration:

- Probe: EX3DV4 - SN3537; ConvF(8.04, 8.04, 8.04); Calibrated: 2005-11-22
- Sensor-Surface: 4mm (Mechanical Surface Detection)
- Electronics: DAE3 Sn468; Calibrated: 2006-01-27
- Phantom: SAM PHANTOM #2; Type: SAM; Serial: TP-1248
- Measurement SW: DASY4, V4.6 Build 23; Postprocessing SW: SEMCAD, V1.8 Build 160

Ear/Tilt, Ch.661, Ant.Intenna, Bat.Standard/Area Scan (51x71x1): Measurement grid:

dx=20mm, dy=20mm

Maximum value of SAR (interpolated) = 0.221 mW/g

Ear/Tilt, Ch.661, Ant.Intenna, Bat.Standard/Zoom Scan (5x5x7)/Cube 0: Measurement

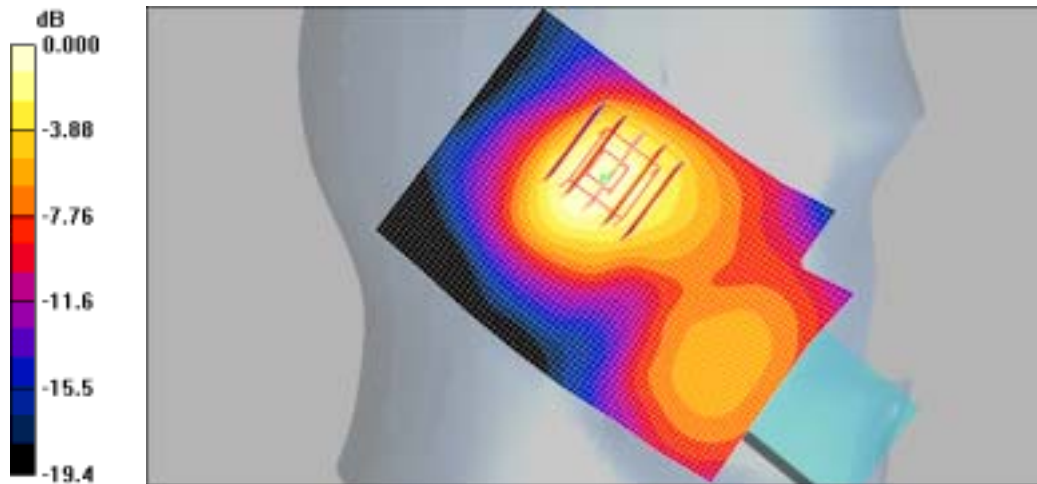
grid: dx=8mm, dy=8mm, dz=5mm

Reference Value = 9.30 V/m; Power Drift = -0.196 dB

Peak SAR (extrapolated) = 0.279 W/kg

SAR(1 g) = 0.187 mW/g

Maximum value of SAR (measured) = 0.199 mW/g



0 dB = 0.199mW/g

SAMSUNG FCC ID : A3LSGHZ630 1900MHz GPRS Body SAR

DUT: SGH-Z630(Body); Serial: FD-074-A

Program Name: SGH-Z630 GPRS1900 Body (Job No. : FD-074)

Procedure Name: Body, Ch.512, Ant.Intenna, Bat.Standard

Procedure Notes: Meas.Tissue Temp(celsius)-22.3, Ambient Temp-21.8;Test Date-09/May/2006[OET Bulletin 65-Supplement C, July 2001]

Communication System: Body GPRS ; Frequency: 1850.2 MHz;Duty Cycle: 1:4.15

Medium parameters used: $f = 1850.2$ MHz; $\sigma = 1.52$ mho/m; $\epsilon_r = 52.1$; $\rho = 1000$ kg/m³

Phantom section: Flat Section

DASY4 Configuration:

- Probe: EX3DV4 - SN3537; ConvF(7.48, 7.48, 7.48); Calibrated: 2005-11-22
- Sensor-Surface: 4mm (Mechanical Surface Detection)
- Electronics: DAE3 Sn468; Calibrated: 2006-01-27
- Phantom: SAM PHANTOM #1; Type: SAM; Serial: TP-1247
- Measurement SW: DASY4, V4.6 Build 23; Postprocessing SW: SEMCAD, V1.8 Build 160

Body, Ch.512, Ant.Intenna, Bat.Standard/Area Scan (51x71x1): Measurement grid:

dx=20mm, dy=20mm

Maximum value of SAR (interpolated) = 0.812 mW/g

Body, Ch.512, Ant.Intenna, Bat.Standard/Zoom Scan (5x5x7)/Cube 0: Measurement grid:

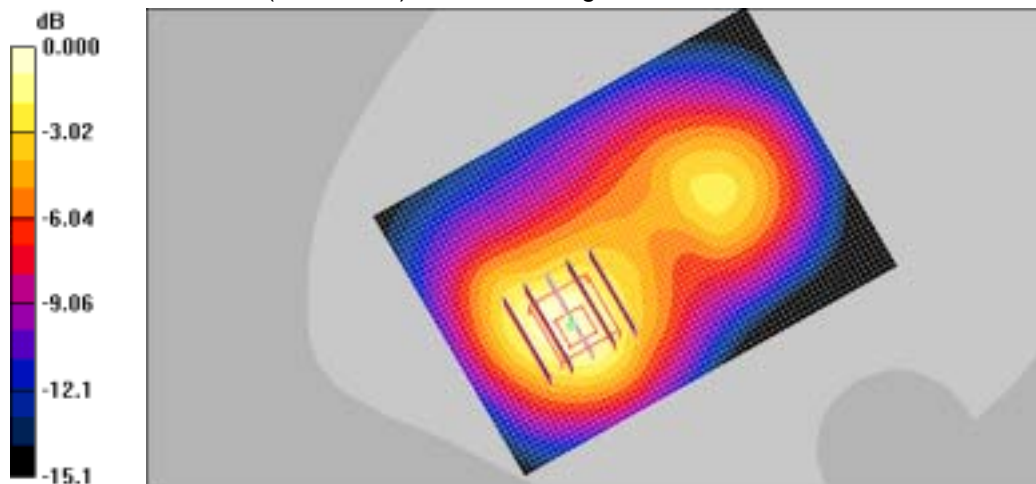
dx=8mm, dy=8mm, dz=5mm

Reference Value = 16.1 V/m; Power Drift = 0.131 dB

Peak SAR (extrapolated) = 1.20 W/kg

SAR(1 g) = 0.787 mW/g

Maximum value of SAR (measured) = 0.857 mW/g



0 dB = 0.857mW/g

SAMSUNG FCC ID : A3LSGHZ630 1900MHz GPRS Body SAR

DUT: SGH-Z630(Body); Serial: FD-074-A

Program Name: SGH-Z630 GPRS1900 Body (Job No. : FD-074)

Procedure Name: Body, Ch.512, Ant.Intenna, Bat.Standard With BT ON

Procedure Notes: Meas.Tissue Temp(celsius)-22.3, Ambient Temp-21.8;Test Date-09/May/2006[OET Bulletin 65-Supplement C, July 2001]

Communication System: Body GPRS ; Frequency: 1850.2 MHz;Duty Cycle: 1:4.15

Medium parameters used: $f = 1850.2$ MHz; $\sigma = 1.52$ mho/m; $\epsilon_r = 52.1$; $\rho = 1000$ kg/m³

Phantom section: Flat Section

DASY4 Configuration:

- Probe: EX3DV4 - SN3537; ConvF(7.48, 7.48, 7.48); Calibrated: 2005-11-22
- Sensor-Surface: 4mm (Mechanical Surface Detection)
- Electronics: DAE3 Sn468; Calibrated: 2006-01-27
- Phantom: SAM PHANTOM #1; Type: SAM; Serial: TP-1247
- Measurement SW: DASY4, V4.6 Build 23; Postprocessing SW: SEMCAD, V1.8 Build 160

Body, Ch.512, Ant.Intenna, Bat.Standard With BT ON/Zoom Scan (5x5x7)/Cube 0:

Measurement grid: dx=8mm, dy=8mm, dz=5mm

Reference Value = 15.5 V/m; Power Drift = -0.118 dB

Peak SAR (extrapolated) = 1.41 W/kg

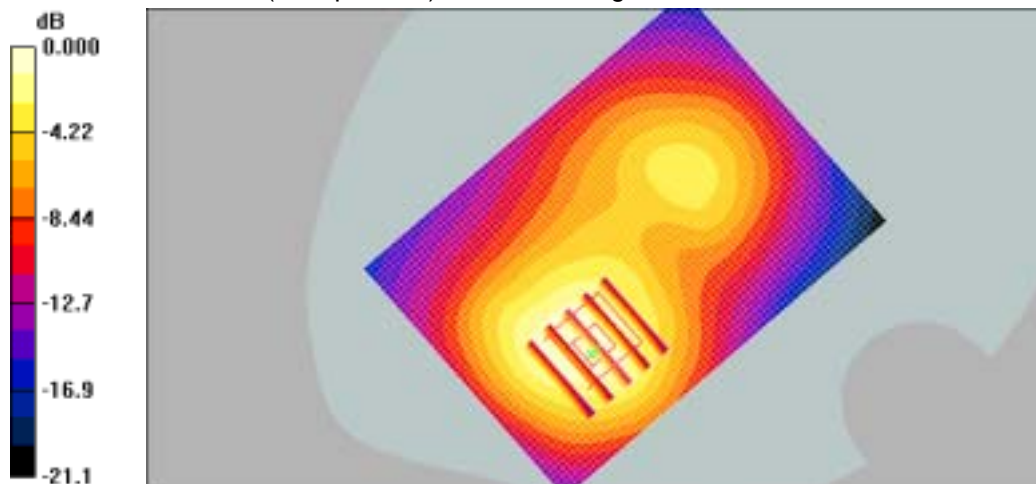
SAR(1 g) = 0.909 mW/g

Maximum value of SAR (measured) = 0.988 mW/g

Body, Ch.512, Ant.Intenna, Bat.Standard With BT ON/Area Scan (51x71x1):

Measurement grid: dx=20mm, dy=20mm

Maximum value of SAR (interpolated) = 0.949 mW/g



0 dB = 0.949mW/g

SAMSUNG FCC ID : A3LSGHZ630 1900MHz GSM1900 Head SAR

DUT: SGH-Z630; Serial: FD-074-A

Program Name: SGH-Z630 GSM1900 Left Slide_down (Job No. : FD-074)

Procedure Name: Cheek/Touch, Ch.512, Ant.Intenna, Bat.Standard

Procedure Notes: Meas.Tissue Temp(celsius)-22.1, Ambient Temp-22.3;Test Date-09/May/2006[OET Bulletin 65-Supplement C, July 2001]

Communication System: GSM 1900; Frequency: 1850.2 MHz;Duty Cycle: 1:8.3

Medium parameters used: $f = 1850.2$ MHz; $\sigma = 1.41$ mho/m; $\epsilon_r = 39.7$; $\rho = 1000$ kg/m³

Phantom section: Left Section

DASY4 Configuration:

- Probe: EX3DV4 - SN3537; ConvF(8.04, 8.04, 8.04); Calibrated: 2005-11-22
- Sensor-Surface: 4mm (Mechanical Surface Detection)
- Electronics: DAE3 Sn468; Calibrated: 2006-01-27
- Phantom: SAM PHANTOM #2; Type: SAM; Serial: TP-1248
- Measurement SW: DASY4, V4.6 Build 23; Postprocessing SW: SEMCAD, V1.8 Build 160

Cheek/Touch, Ch.512, Ant.Intenna, Bat.Standard/Zoom Scan (5x5x7)/Cube 0:

Measurement grid: dx=8mm, dy=8mm, dz=5mm

Reference Value = 8.11 V/m; Power Drift = -0.097 dB

Peak SAR (extrapolated) = 1.81 W/kg

SAR(1 g) = 1.15 mW/g

Maximum value of SAR (measured) = 1.25 mW/g

Cheek/Touch, Ch.512, Ant.Intenna, Bat.Standard/Area Scan (51x71x1): Measurement

grid: dx=20mm, dy=20mm

Maximum value of SAR (interpolated) = 1.25 mW/g



SAMSUNG FCC ID : A3LSGHZ630 1900MHz GSM1900 Body SAR

DUT: SGH-Z630(Body); Serial: FD-074-A

Program Name: SGH-Z630 GPRS1900 Body (Job No. : FD-074)

Procedure Name: Body, Ch.512, Ant.Intenna, Bat.Standard With BT ON

Procedure Notes: Meas.Tissue Temp(celsius)-22.3, Ambient Temp-21.8;Test Date-09/May/2006[OET Bulletin 65-Supplement C, July 2001]

Communication System: Body GPRS ; Frequency: 1850.2 MHz;Duty Cycle: 1:4.15

Medium parameters used: $f = 1850.2$ MHz; $\sigma = 1.52$ mho/m; $\epsilon_r = 52.1$; $\rho = 1000$ kg/m³

Phantom section: Flat Section

DASY4 Configuration:

- Probe: EX3DV4 - SN3537; ConvF(7.48, 7.48, 7.48); Calibrated: 2005-11-22
- Sensor-Surface: 4mm (Mechanical Surface Detection)
- Electronics: DAE3 Sn468; Calibrated: 2006-01-27
- Phantom: SAM PHANTOM #1; Type: SAM; Serial: TP-1247
- Measurement SW: DASY4, V4.6 Build 23; Postprocessing SW: SEMCAD, V1.8 Build 160

Body, Ch.512, Ant.Intenna, Bat.Standard With BT ON/Zoom Scan (5x5x7)/Cube 0:

Measurement grid: dx=8mm, dy=8mm, dz=5mm

Reference Value = 15.5 V/m; Power Drift = -0.118 dB

Peak SAR (extrapolated) = 1.41 W/kg

SAR(1 g) = 0.909 mW/g

Maximum value of SAR (measured) = 0.988 mW/g

Body, Ch.512, Ant.Intenna, Bat.Standard With BT ON/Area Scan (51x71x1):

Measurement grid: dx=20mm, dy=20mm

Maximum value of SAR (interpolated) = 0.949 mW/g

