

SAMSUNG FCC ID : A3LSGHZ620 1900MHz - -GSM1900 Head SAR

DUT: SGH-Z620; Serial: FD-132-E

Program Name: SGH-Z620 GSM1900 Right (Job No. : FD-132)

Procedure Name: Cheek/Touch, Ch.512, Ant.Intenna, Bat.Standard

Procedure Notes: Meas. Ambient Temp-22.8,Tissue Temp(celsius)-21.4;Test Date-26/Jul/2006[OET Bulletin 65-Supplement C, July 2001]

Communication System: GSM 1900; Frequency: 1850.2 MHz;Duty Cycle: 1:8.3

Medium parameters used:  $f = 1850.2$  MHz;  $\sigma = 1.36$  mho/m;  $\epsilon_r = 38.6$ ;  $\rho = 1000$  kg/m<sup>3</sup>

Phantom section: Right Section

DASY4 Configuration:

- Probe: ES3DV3 - SN3080; ConvF(5, 5, 5); Calibrated: 2006-05-30
- Sensor-Surface: 4mm (Mechanical Surface Detection)
- Electronics: DAE4 Sn686; Calibrated: 2006-05-05
- Phantom: SAM PHANTOM #1; Type: SAM; Serial: TP-1247
- Measurement SW: DASY4, V4.7 Build 44; Postprocessing SW: SEMCAD, V1.8 Build 171

**Cheek/Touch, Ch.512, Ant.Intenna, Bat.Standard/Area Scan (51x71x1):** Measurement grid: dx=20mm, dy=20mm

Maximum value of SAR (interpolated) = 0.344 mW/g

**Cheek/Touch, Ch.512, Ant.Intenna, Bat.Standard/Zoom Scan (5x5x7)/Cube 0:**

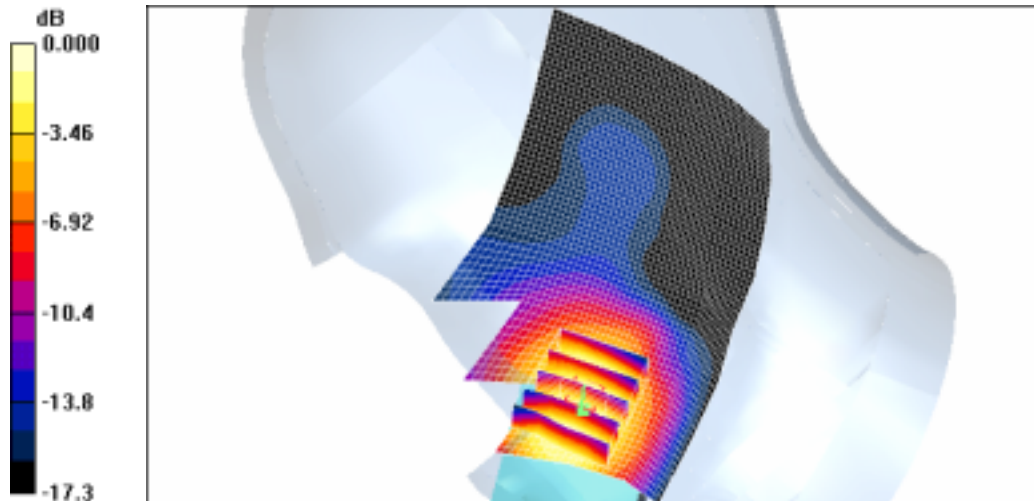
Measurement grid: dx=8mm, dy=8mm, dz=5mm

Reference Value = 3.01 V/m; Power Drift = -0.024 dB

Peak SAR (extrapolated) = 0.420 W/kg

**SAR(1 g) = 0.304 mW/g**

Maximum value of SAR (measured) = 0.330 mW/g



0 dB = 0.330mW/g

SAMSUNG FCC ID : A3LSGHZ620 1900MHz - -GSM1900 Head SAR

DUT: SGH-Z620; Serial: FD-132-E

Program Name: SGH-Z620 GSM1900 Right (Job No. : FD-132)

Procedure Name: Ear/Tilt, Ch.661, Ant.Intenna, Bat.Standard

Procedure Notes: Meas. Ambient Temp-22.8,Tissue Temp(celsius)-21.4;Test Date-26/Jul/2006[OET Bulletin 65-Supplement C, July 2001]

Communication System: GSM 1900; Frequency: 1880 MHz;Duty Cycle: 1:8.3

Medium parameters used:  $f = 1880$  MHz;  $\sigma = 1.36$  mho/m;  $\epsilon_r = 38.6$ ;  $\rho = 1000$  kg/m<sup>3</sup>

Phantom section: Right Section

DASY4 Configuration:

- Probe: ES3DV3 - SN3080; ConvF(5, 5, 5); Calibrated: 2006-05-30
- Sensor-Surface: 4mm (Mechanical Surface Detection)
- Electronics: DAE4 Sn686; Calibrated: 2006-05-05
- Phantom: SAM PHANTOM #1; Type: SAM; Serial: TP-1247
- Measurement SW: DASY4, V4.7 Build 44; Postprocessing SW: SEMCAD, V1.8 Build 171

Ear/Tilt, Ch.661, Ant.Intenna, Bat.Standard/Area Scan (51x71x1): Measurement grid:

$dx=20$ mm,  $dy=20$ mm

Maximum value of SAR (interpolated) = 0.041 mW/g

Ear/Tilt, Ch.661, Ant.Intenna, Bat.Standard/Zoom Scan (5x5x7)/Cube 0: Measurement

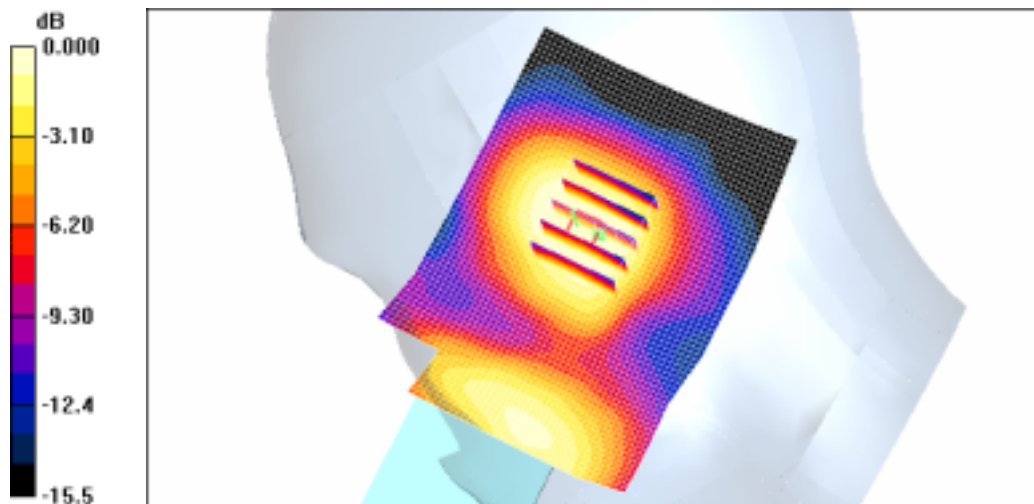
grid:  $dx=8$ mm,  $dy=8$ mm,  $dz=5$ mm

Reference Value = 2.83 V/m; Power Drift = 0.053 dB

Peak SAR (extrapolated) = 0.044 W/kg

**SAR(1 g) = 0.033 mW/g**

Maximum value of SAR (measured) = 0.035 mW/g



0 dB = 0.035mW/g

SAMSUNG FCC ID : A3LSGHZ620 1900MHz - -GSM1900 Head SAR

DUT: SGH-Z620; Serial: FD-132-E

Program Name: SGH-Z620 GSM1900 Left (Job No. : FD-132)

Procedure Name: Cheek/Touch, Ch.512, Ant.Intenna, Bat.Standard

Procedure Notes: Meas. Ambient Temp-22.8,Tissue Temp(celsius)-21.4;Test Date-26/Jul/2006[OET Bulletin 65-Supplement C, July 2001]

Communication System: GSM 1900; Frequency: 1850.2 MHz;Duty Cycle: 1:8.3

Medium parameters used:  $f = 1850.2$  MHz;  $\sigma = 1.36$  mho/m;  $\epsilon_r = 38.6$ ;  $\rho = 1000$  kg/m<sup>3</sup>

Phantom section: Left Section

DASY4 Configuration:

- Probe: ES3DV3 - SN3080; ConvF(5, 5, 5); Calibrated: 2006-05-30
- Sensor-Surface: 4mm (Mechanical Surface Detection)
- Electronics: DAE4 Sn686; Calibrated: 2006-05-05
- Phantom: SAM PHANTOM #1; Type: SAM; Serial: TP-1247
- Measurement SW: DASY4, V4.7 Build 44; Postprocessing SW: SEMCAD, V1.8 Build 171

**Cheek/Touch, Ch.512, Ant.Intenna, Bat.Standard/Area Scan (51x71x1):** Measurement grid: dx=20mm, dy=20mm

Maximum value of SAR (interpolated) = 0.194 mW/g

**Cheek/Touch, Ch.512, Ant.Intenna, Bat.Standard/Zoom Scan (5x5x7)/Cube 0:**

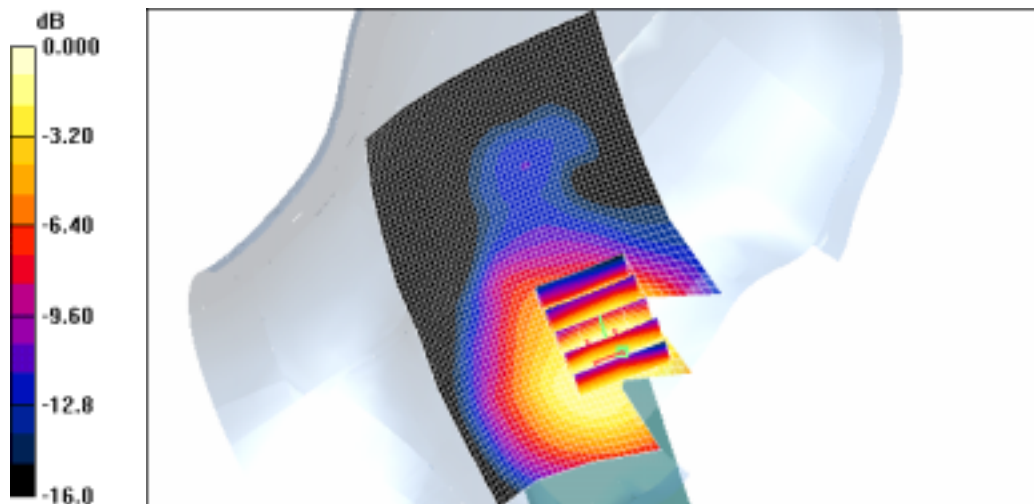
Measurement grid: dx=8mm, dy=8mm, dz=5mm

Reference Value = 4.55 V/m; Power Drift = 0.140 dB

Peak SAR (extrapolated) = 0.277 W/kg

**SAR(1 g) = 0.217 mW/g**

Maximum value of SAR (measured) = 0.230 mW/g



0 dB = 0.230mW/g

SAMSUNG FCC ID : A3LSGHZ620 1900MHz - -GSM1900 Head SAR

DUT: SGH-Z620; Serial: FD-132-E

Program Name: SGH-Z620 GSM1900 Left (Job No. : FD-132)

Procedure Name: Ear/Tilt, Ch.661, Ant.Intenna, Bat.Standard

Procedure Notes: Meas. Ambient Temp-22.8,Tissue Temp(celsius)-21.4;Test Date-26/Jul/2006[OET Bulletin 65-Supplement C, July 2001]

Communication System: GSM 1900; Frequency: 1880 MHz;Duty Cycle: 1:8.3

Medium parameters used:  $f = 1880$  MHz;  $\sigma = 1.36$  mho/m;  $\epsilon_r = 38.6$ ;  $\rho = 1000$  kg/m<sup>3</sup>

Phantom section: Left Section

DASY4 Configuration:

- Probe: ES3DV3 - SN3080; ConvF(5, 5, 5); Calibrated: 2006-05-30
- Sensor-Surface: 4mm (Mechanical Surface Detection)
- Electronics: DAE4 Sn686; Calibrated: 2006-05-05
- Phantom: SAM PHANTOM #1; Type: SAM; Serial: TP-1247
- Measurement SW: DASY4, V4.7 Build 44; Postprocessing SW: SEMCAD, V1.8 Build 171

Ear/Tilt, Ch.661, Ant.Intenna, Bat.Standard/Area Scan (51x71x1): Measurement grid:

$dx=20$ mm,  $dy=20$ mm

Maximum value of SAR (interpolated) = 0.047 mW/g

Ear/Tilt, Ch.661, Ant.Intenna, Bat.Standard/Zoom Scan (5x5x7)/Cube 0: Measurement

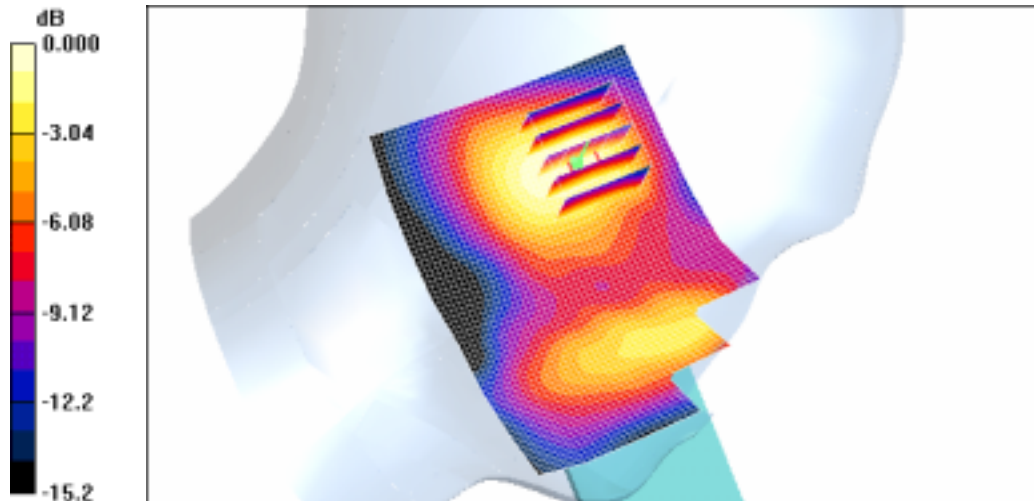
grid:  $dx=8$ mm,  $dy=8$ mm,  $dz=5$ mm

Reference Value = 3.70 V/m; Power Drift = -0.053 dB

Peak SAR (extrapolated) = 0.060 W/kg

**SAR(1 g) = 0.044 mW/g**

Maximum value of SAR (measured) = 0.047 mW/g



0 dB = 0.047mW/g

SAMSUNG FCC ID : A3LSGHZ620 1900MHz - -GSM1900 Head SAR

DUT: SGH-Z620; Serial: FD-132-E

Program Name: SGH-Z620 GSM1900 Right (Job No. : FD-132)

Procedure Name: Cheek/Touch, Ch.512, Ant.Intenna, Bat.Standard with BT ON

Procedure Notes: Meas. Ambient Temp-22.8,Tissue Temp(celsius)-21.4;Test Date-26/Jul/2006[OET Bulletin 65-Supplement C, July 2001]

Communication System: GSM 1900; Frequency: 1850.2 MHz;Duty Cycle: 1:8.3

Medium parameters used:  $f = 1850.2$  MHz;  $\sigma = 1.36$  mho/m;  $\epsilon_r = 38.6$ ;  $\rho = 1000$  kg/m<sup>3</sup>

Phantom section: Right Section

DASY4 Configuration:

- Probe: ES3DV3 - SN3080; ConvF(5, 5, 5); Calibrated: 2006-05-30
- Sensor-Surface: 4mm (Mechanical Surface Detection)
- Electronics: DAE4 Sn686; Calibrated: 2006-05-05
- Phantom: SAM PHANTOM #1; Type: SAM; Serial: TP-1247
- Measurement SW: DASY4, V4.7 Build 44; Postprocessing SW: SEMCAD, V1.8 Build 171

**Cheek/Touch, Ch.512, Ant.Intenna, Bat.Standard with BT ON/Area Scan (51x71x1):**

Measurement grid: dx=20mm, dy=20mm

Maximum value of SAR (interpolated) = 0.301 mW/g

**Cheek/Touch, Ch.512, Ant.Intenna, Bat.Standard with BT ON/Zoom Scan (5x5x7)/Cube**

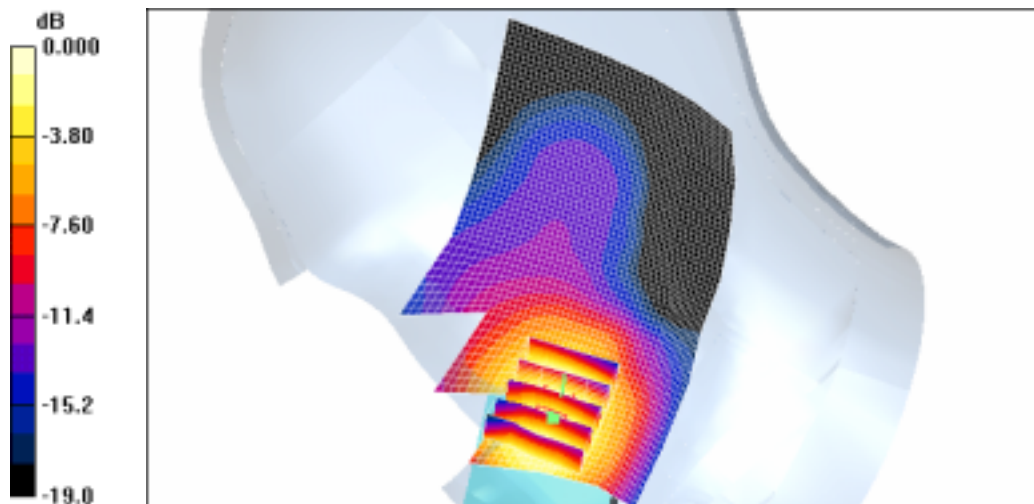
0: Measurement grid: dx=8mm, dy=8mm, dz=5mm

Reference Value = 3.60 V/m; Power Drift = -0.182 dB

Peak SAR (extrapolated) = 0.379 W/kg

**SAR(1 g) = 0.273 mW/g**

Maximum value of SAR (measured) = 0.295 mW/g



0 dB = 0.295mW/g

SAMSUNG FCC ID : A3LSGHZ620 1900MHz -- GPRS1900 Body SAR

DUT: SGH-Z620(body); Serial: FD-132-E

Program Name: SGH-Z620 GPRS1900 Body (Job No. : FD-132)

Procedure Name: Body, Ch.512, Ant.Intenna, Bat.Standard

Procedure Notes: Meas.Ambient Temp-22.8,Tissue Temp(celsius)-22.0;Test Date-26/Jul/2006[OET Bulletin 65-Supplement C, July 2001]

Communication System: GSM1900 GPRS; Frequency: 1850.2 MHz;Duty Cycle: 1:4.15  
Medium parameters used:  $f = 1850.2$  MHz;  $\sigma = 1.51$  mho/m;  $\epsilon_r = 52.2$ ;  $\rho = 1000$  kg/m<sup>3</sup>

Phantom section: Flat Section

DASY4 Configuration:

- Probe: ES3DV3 - SN3080; ConvF(4.5, 4.5, 4.5); Calibrated: 2006-05-30
- Sensor-Surface: 4mm (Mechanical Surface Detection)
- Electronics: DAE4 Sn686; Calibrated: 2006-05-05
- Phantom: SAM PHANTOM #2; Type: SAM; Serial: TP-1248
- Measurement SW: DASY4, V4.7 Build 44; Postprocessing SW: SEMCAD, V1.8 Build 171

**Body, Ch.512, Ant.Intenna, Bat.Standard/Area Scan (51x71x1):** Measurement grid:

$dx=20$ mm,  $dy=20$ mm

Maximum value of SAR (interpolated) = 0.442 mW/g

**Body, Ch.512, Ant.Intenna, Bat.Standard/Zoom Scan (5x5x7)/Cube 0:** Measurement grid:

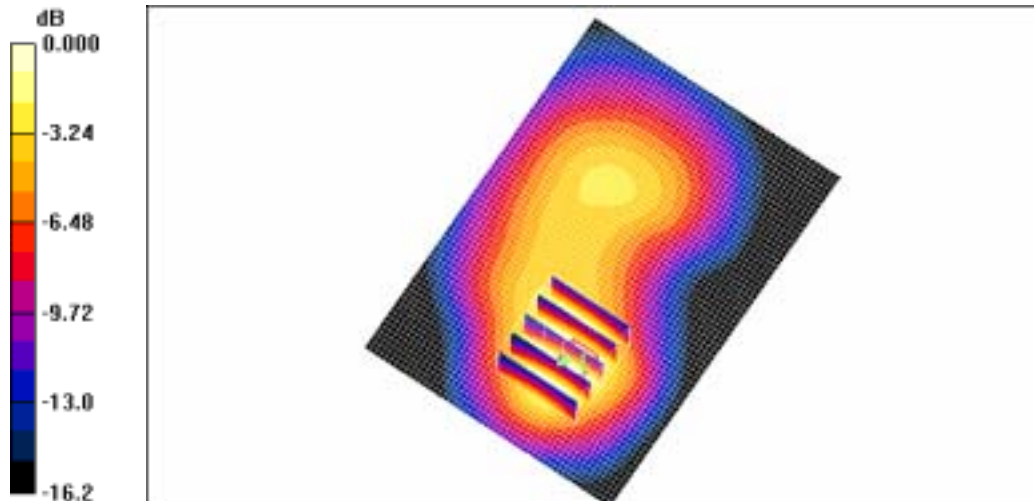
$dx=8$ mm,  $dy=8$ mm,  $dz=5$ mm

Reference Value = 9.59 V/m; Power Drift = -0.133 dB

Peak SAR (extrapolated) = 0.579 W/kg

**SAR(1 g) = 0.376 mW/g**

Maximum value of SAR (measured) = 0.398 mW/g



0 dB = 0.398mW/g

SAMSUNG FCC ID : A3LSGHZ620 1900MHz -- GPRS1900 Body SAR

DUT: SGH-Z620(body); Serial: FD-132-E

Program Name: SGH-Z620 GPRS1900 Body (Job No. : FD-132)

Procedure Name: Body, Ch.512, Ant.Intenna, Bat.Standard With BT ON

Procedure Notes: Meas.Ambient Temp-22.8,Tissue Temp(celsius)-22.0;Test Date-26/Jul/2006[OET Bulletin 65-Supplement C, July 2001]

Communication System: GSM1900 GPRS; Frequency: 1850.2 MHz;Duty Cycle: 1:4.15  
Medium parameters used:  $f = 1850.2$  MHz;  $\sigma = 1.51$  mho/m;  $\epsilon_r = 52.2$ ;  $\rho = 1000$  kg/m<sup>3</sup>

Phantom section: Flat Section

DASY4 Configuration:

- Probe: ES3DV3 - SN3080; ConvF(4.5, 4.5, 4.5); Calibrated: 2006-05-30
- Sensor-Surface: 4mm (Mechanical Surface Detection)
- Electronics: DAE4 Sn686; Calibrated: 2006-05-05
- Phantom: SAM PHANTOM #2; Type: SAM; Serial: TP-1248
- Measurement SW: DASY4, V4.7 Build 44; Postprocessing SW: SEMCAD, V1.8 Build 171

**Body, Ch.512, Ant.Intenna, Bat.Standard With BT ON/Area Scan (51x71x1):**

Measurement grid: dx=20mm, dy=20mm

Maximum value of SAR (interpolated) = 0.374 mW/g

**Body, Ch.512, Ant.Intenna, Bat.Standard With BT ON/Zoom Scan (5x5x7)/Cube 0:**

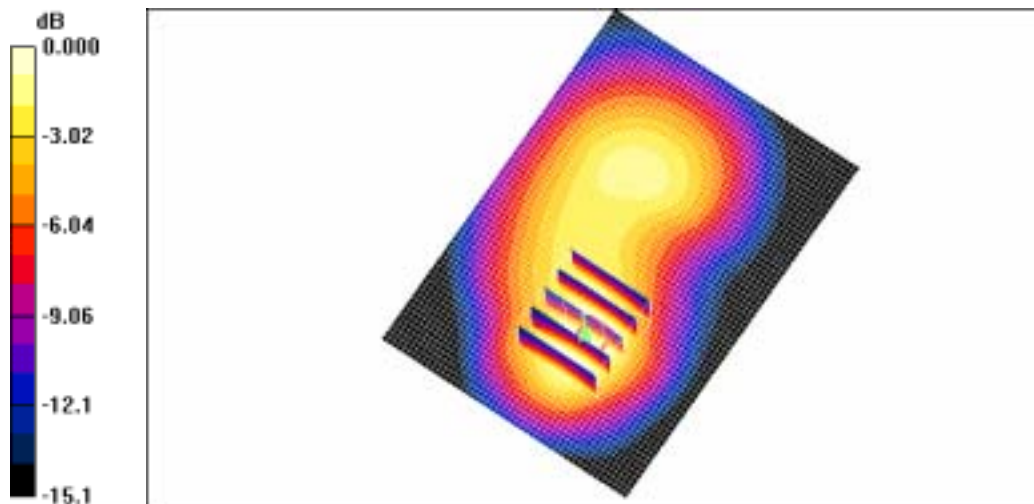
Measurement grid: dx=8mm, dy=8mm, dz=5mm

Reference Value = 10.5 V/m; Power Drift = 0.072 dB

Peak SAR (extrapolated) = 0.471 W/kg

**SAR(1 g) = 0.311 mW/g**

Maximum value of SAR (measured) = 0.327 mW/g



0 dB = 0.327mW/g

SAMSUNG FCC ID : A3LSGHZ620 1900MHz - - GSM1900 Head SAR

DUT: SGH-Z620; Serial: FD-132-E

Program Name: SGH-Z620 GSM1900 Right (Job No. : FD-132)

Procedure Name: Cheek/Touch, Ch.512, Ant.Intenna, Bat.Standard

Procedure Notes: Meas. Ambient Temp-22.8,Tissue Temp(celsius)-21.4;Test Date-26/Jul/2006[OET Bulletin 65-Supplement C, July 2001]

Communication System: GSM 1900; Frequency: 1850.2 MHz;Duty Cycle: 1:8.3

Medium parameters used:  $f = 1850.2$  MHz;  $\sigma = 1.36$  mho/m;  $\epsilon_r = 38.6$ ;  $\rho = 1000$  kg/m<sup>3</sup>

Phantom section: Right Section

DASY4 Configuration:

- Probe: ES3DV3 - SN3080; ConvF(5, 5, 5); Calibrated: 2006-05-30
- Sensor-Surface: 4mm (Mechanical Surface Detection)
- Electronics: DAE4 Sn686; Calibrated: 2006-05-05
- Phantom: SAM PHANTOM #1; Type: SAM; Serial: TP-1247
- Measurement SW: DASY4, V4.7 Build 44; Postprocessing SW: SEMCAD, V1.8 Build 171

**Cheek/Touch, Ch.512, Ant.Intenna, Bat.Standard/Area Scan (51x71x1):** Measurement grid: dx=20mm, dy=20mm

Maximum value of SAR (interpolated) = 0.344 mW/g

**Cheek/Touch, Ch.512, Ant.Intenna, Bat.Standard/Zoom Scan (5x5x7)/Cube 0:**

Measurement grid: dx=8mm, dy=8mm, dz=5mm

Reference Value = 3.01 V/m; Power Drift = -0.024 dB

Peak SAR (extrapolated) = 0.420 W/kg

**SAR(1 g) = 0.304 mW/g**

Maximum value of SAR (measured) = 0.330 mW/g



SAMSUNG FCC ID : A3LSGHZ620 1900MHz - - GPRS1900 Body SAR

DUT: SGH-Z620(body); Serial: FD-132-E

Program Name: SGH-Z620 GPRS1900 Body (Job No. : FD-132)

Procedure Name: Body, Ch.512, Ant.Intenna, Bat.Standard

Procedure Notes: Meas.Ambient Temp-22.8,Tissue Temp(celsius)-22.0;Test Date-26/Jul/2006[OET Bulletin 65-Supplement C, July 2001]

Communication System: GSM1900 GPRS; Frequency: 1850.2 MHz;Duty Cycle: 1:4.15  
Medium parameters used:  $f = 1850.2$  MHz;  $\sigma = 1.51$  mho/m;  $\epsilon_r = 52.2$ ;  $\rho = 1000$  kg/m<sup>3</sup>

Phantom section: Flat Section

DASY4 Configuration:

- Probe: ES3DV3 - SN3080; ConvF(4.5, 4.5, 4.5); Calibrated: 2006-05-30
- Sensor-Surface: 4mm (Mechanical Surface Detection)
- Electronics: DAE4 Sn686; Calibrated: 2006-05-05
- Phantom: SAM PHANTOM #2; Type: SAM; Serial: TP-1248
- Measurement SW: DASY4, V4.7 Build 44; Postprocessing SW: SEMCAD, V1.8 Build 171

**Body, Ch.512, Ant.Intenna, Bat.Standard/Area Scan (51x71x1):** Measurement grid:

dx=20mm, dy=20mm

Maximum value of SAR (interpolated) = 0.442 mW/g

**Body, Ch.512, Ant.Intenna, Bat.Standard/Zoom Scan (5x5x7)/Cube 0:** Measurement grid:

dx=8mm, dy=8mm, dz=5mm

Reference Value = 9.59 V/m; Power Drift = -0.133 dB

Peak SAR (extrapolated) = 0.579 W/kg

**SAR(1 g) = 0.376 mW/g**

Maximum value of SAR (measured) = 0.398 mW/g

