

# SAMSUNG FCC ID : A3LSGHZ500 -- 1900MHz GSM1900 Head SAR

**DUT: SGH-Z500; Serial: FC-010-E**

**Program Name: SGH-Z500 GSM1900 Right (Job No.: FC-010)**

**Procedure Name: Cheek/Touch, Ch.810, Ant.Intenna, Bat.Standard**

**Procedure Notes: Meas.Tissue Temp(celsius)-21.7;Test Date-19/Jan/2005[OET Bulletin 65-Supplement C, July 2001]**

Communication System: GSM 1900; Frequency: 1909.8 MHz;Duty Cycle: 1:8.3

Medium parameters used:  $\sigma = 1.4$ ; mho/m,  $\epsilon_r = 38.9$ ;  $\rho = 1000$  kg/m<sup>3</sup>

Phantom section: Right Section

DASY4 Configuration:

- Probe: ES3DV2 - SN3017; ConvF(5.11, 5.11, 5.11); Calibrated: 2004-09-24
- Sensor-Surface: 4mm (Mechanical Surface Detection)
- Electronics: DAE3 Sn533; Calibrated: 2004-12-03
- Phantom: SAM 1800/1900 MHz; Type: SAM; Serial: TP-1143
- Measurement SW: DASY4, V4.4 Build 3; Postprocessing SW: SEMCAD, V1.8 Build 130

**Cheek/Touch, Ch.810, Ant.Intenna, Bat.Standard/Area Scan (101x141x1):** Measurement grid: dx=10mm, dy=10mm

Maximum value of SAR (interpolated) = 0.493 mW/g

**Cheek/Touch, Ch.810, Ant.Intenna, Bat.Standard/Zoom Scan (5x5x7)/Cube 0:** Measurement grid: dx=8mm, dy=8mm, dz=5mm

Reference Value = 8.44 V/m; Power Drift = -0.0 dB

Peak SAR (extrapolated) = 0.696 W/kg

**SAR(1 g) = 0.447 mW/g**

Maximum value of SAR (measured) = 0.509 mW/g

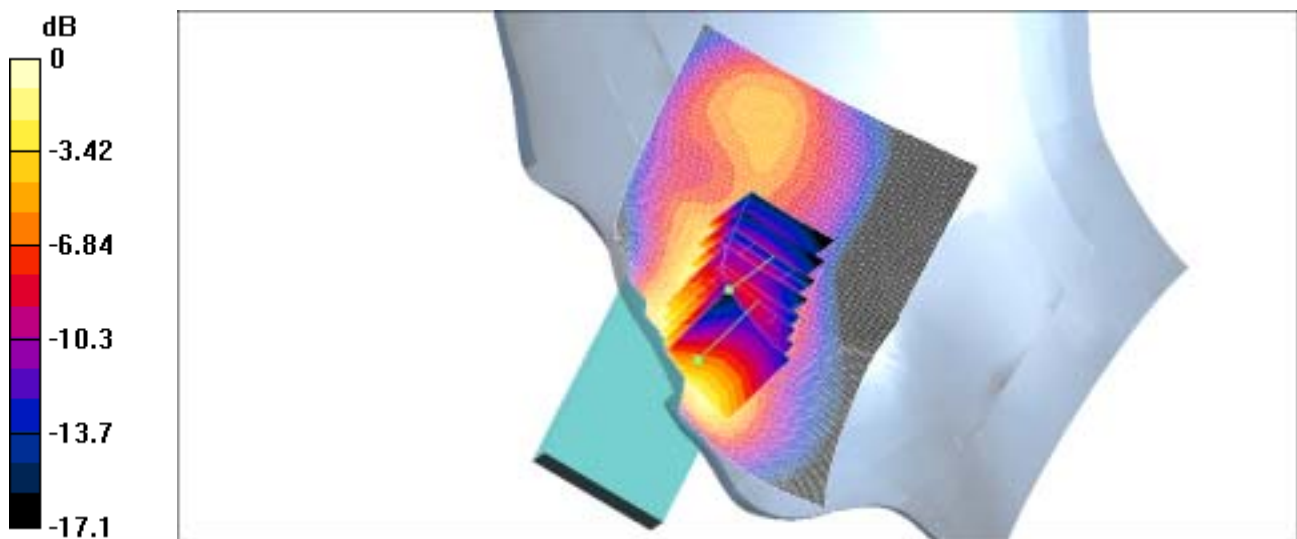
**Cheek/Touch, Ch.810, Ant.Intenna, Bat.Standard/Zoom Scan (5x5x7)/Cube 1:** Measurement grid: dx=8mm, dy=8mm, dz=5mm

Reference Value = 8.44 V/m; Power Drift = -0.0 dB

Peak SAR (extrapolated) = 0.642 W/kg

**SAR(1 g) = 0.458 mW/g**

Maximum value of SAR (measured) = 0.492 mW/g



0 dB = 0.492mW/g

# SAMSUNG FCC ID : A3LSGHZ500 -- 1900MHz GSM1900 Head SAR

**DUT: SGH-Z500; Serial: FC-010-E**

**Program Name: SGH-Z500 GSM1900 Right (Job No.: FC-010)**

**Procedure Name: Ear/Tilt, Ch.661, Ant.Intenna, Bat.Standard**

**Procedure Notes: Meas.Tissue Temp(celsius)-21.7;Test Date-19/Jan/2005[OET Bulletin 65-Supplement C, July 2001]**

Communication System: GSM 1900; Frequency: 1880 MHz;Duty Cycle: 1:8.3

Medium parameters used:  $\sigma = 1.4$ ; mho/m,  $\epsilon_r = 38.9$ ;  $\rho = 1000$  kg/m<sup>3</sup>

Phantom section: Right Section

DASY4 Configuration:

- Probe: ES3DV2 - SN3017; ConvF(5.11, 5.11, 5.11); Calibrated: 2004-09-24
- Sensor-Surface: 4mm (Mechanical Surface Detection)
- Electronics: DAE3 Sn533; Calibrated: 2004-12-03
- Phantom: SAM 1800/1900 MHz; Type: SAM; Serial: TP-1143
- Measurement SW: DASY4, V4.4 Build 3; Postprocessing SW: SEMCAD, V1.8 Build 130

**Ear/Tilt, Ch.661, Ant.Intenna, Bat.Standard/Area Scan (51x81x1):** Measurement grid: dx=20mm, dy=20mm

Maximum value of SAR (interpolated) = 0.163 mW/g

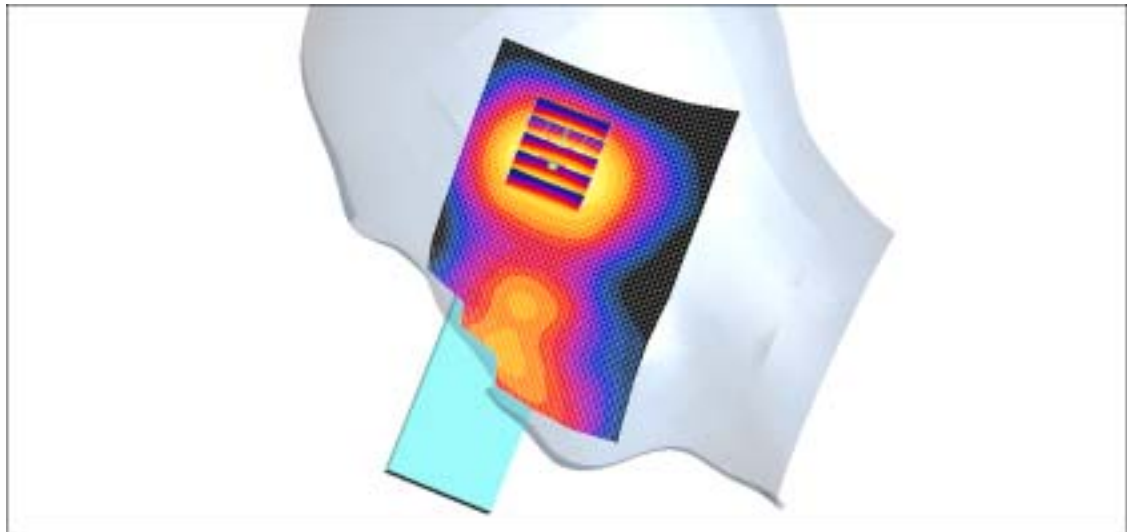
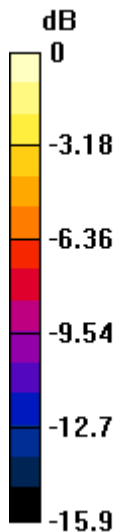
**Ear/Tilt, Ch.661, Ant.Intenna, Bat.Standard/Zoom Scan (5x5x7)/Cube 0:** Measurement grid: dx=8mm, dy=8mm, dz=5mm

Reference Value = 9.92 V/m; Power Drift = 0.1 dB

Peak SAR (extrapolated) = 0.249 W/kg

**SAR(1 g) = 0.154 mW/g**

Maximum value of SAR (measured) = 0.165 mW/g



0 dB = 0.165mW/g

# SAMSUNG FCC ID : A3LSGHZ500 -- 1900MHz GSM1900 Head SAR

**DUT: SGH-Z500; Serial: FC-010-E**

**Program Name: SGH-Z500 GSM1900 Left (Job No.: FC-010)**

**Procedure Name: Cheek/Touch, Ch.810, Ant.Intenna, Bat.Standard**

**Procedure Notes: Meas.Tissue Temp(celsius)-21.7;Test Date-19/Jan/2005[OET Bulletin 65-Supplement C, July 2001]**

Communication System: GSM 1900; Frequency: 1909.8 MHz;Duty Cycle: 1:8.3

Medium parameters used:  $\sigma = 1.4$ ; mho/m,  $\epsilon_r = 38.9$ ;  $\rho = 1000$  kg/m<sup>3</sup>

Phantom section: Left Section

DASY4 Configuration:

- Probe: ES3DV2 - SN3017; ConvF(5.11, 5.11, 5.11); Calibrated: 2004-09-24
- Sensor-Surface: 4mm (Mechanical Surface Detection)
- Electronics: DAE3 Sn533; Calibrated: 2004-12-03
- Phantom: SAM 1800/1900 MHz; Type: SAM; Serial: TP-1143
- Measurement SW: DASY4, V4.4 Build 3; Postprocessing SW: SEMCAD, V1.8 Build 130

**Cheek/Touch, Ch.810, Ant.Intenna, Bat.Standard/Area Scan (51x71x1):** Measurement grid: dx=20mm, dy=20mm

Maximum value of SAR (interpolated) = 0.715 mW/g

**Cheek/Touch, Ch.810, Ant.Intenna, Bat.Standard/Zoom Scan (5x5x7)/Cube 0:** Measurement grid: dx=8mm, dy=8mm, dz=5mm

Reference Value = 7.6 V/m; Power Drift = -0.1 dB

Peak SAR (extrapolated) = 0.928 W/kg

**SAR(1 g) = 0.648 mW/g**

Maximum value of SAR (measured) = 0.679 mW/g

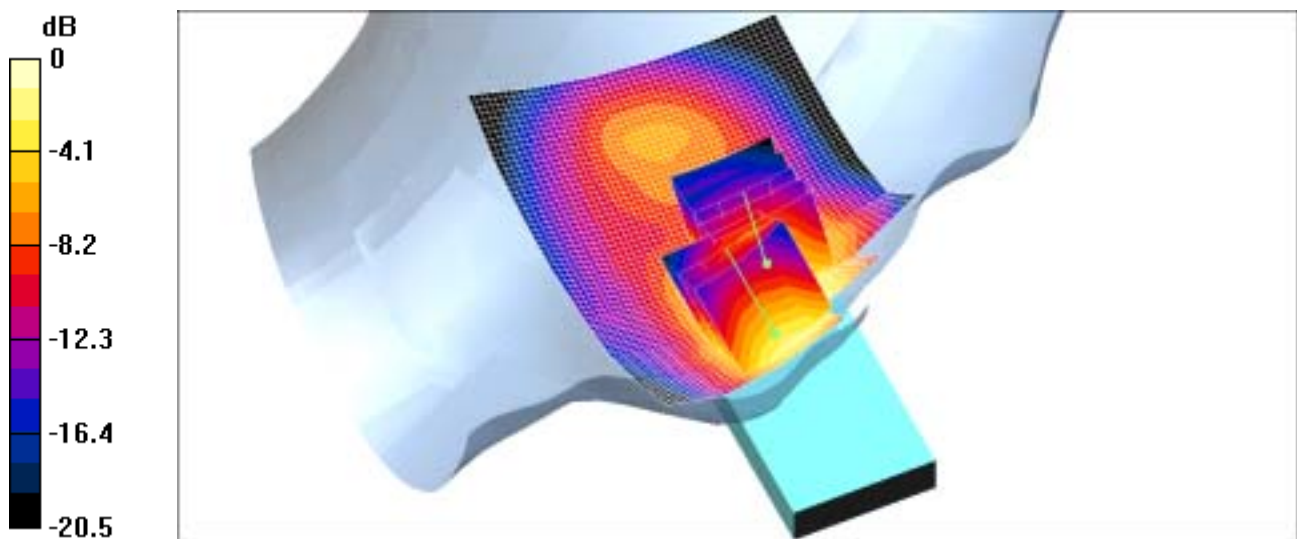
**Cheek/Touch, Ch.810, Ant.Intenna, Bat.Standard/Zoom Scan (5x5x7)/Cube 1:** Measurement grid: dx=8mm, dy=8mm, dz=5mm

Reference Value = 7.6 V/m; Power Drift = -0.1 dB

Peak SAR (extrapolated) = 0.779 W/kg

**SAR(1 g) = 0.502 mW/g**

Maximum value of SAR (measured) = 0.541 mW/g



0 dB = 0.541mW/g

# SAMSUNG FCC ID : A3LSGHZ500 -- 1900MHz GSM1900 Head SAR

**DUT: SGH-Z500; Serial: FC-010-E**

**Program Name: SGH-Z500 GSM1900 Left (Job No.: FC-010)**

**Procedure Name: Ear/Tilt, Ch.661, Ant.Intenna, Bat.Standard**

**Procedure Notes: Meas.Tissue Temp(celsius)-21.7;Test Date-19/Jan/2005[OET Bulletin 65-Supplement C, July 2001]**

Communication System: GSM 1900; Frequency: 1880 MHz;Duty Cycle: 1:8.3

Medium parameters used:  $\sigma = 1.4$ ; mho/m,  $\epsilon_r = 38.9$ ;  $\rho = 1000$  kg/m<sup>3</sup>

Phantom section: Left Section

DASY4 Configuration:

- Probe: ES3DV2 - SN3017; ConvF(5.11, 5.11, 5.11); Calibrated: 2004-09-24
- Sensor-Surface: 4mm (Mechanical Surface Detection)
- Electronics: DAE3 Sn533; Calibrated: 2004-12-03
- Phantom: SAM 1800/1900 MHz; Type: SAM; Serial: TP-1143
- Measurement SW: DASY4, V4.4 Build 3; Postprocessing SW: SEMCAD, V1.8 Build 130

**Ear/Tilt, Ch.661, Ant.Intenna, Bat.Standard/Area Scan (51x81x1):** Measurement grid: dx=20mm, dy=20mm

Maximum value of SAR (interpolated) = 0.179 mW/g

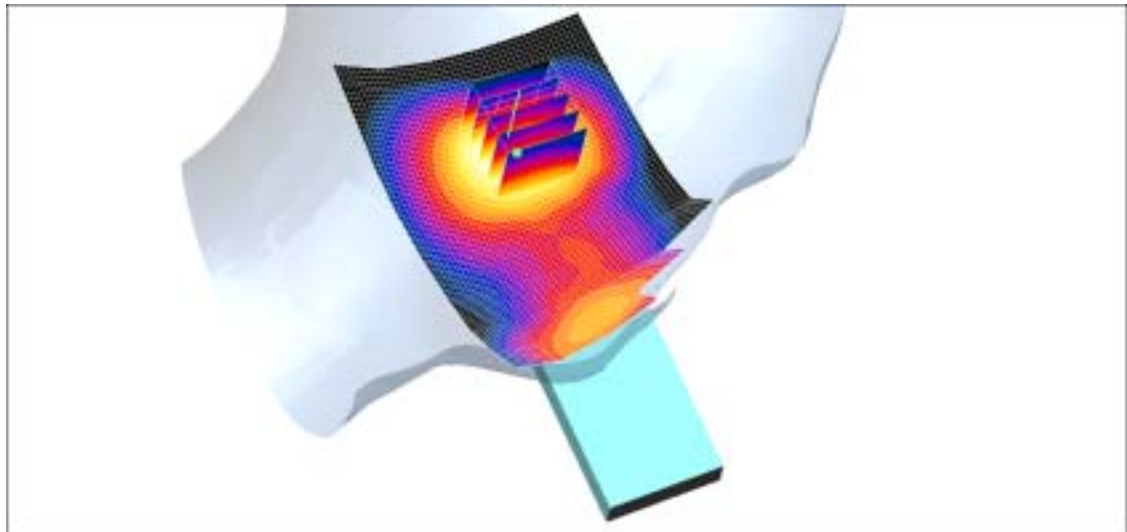
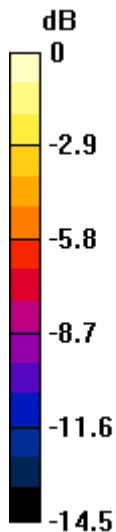
**Ear/Tilt, Ch.661, Ant.Intenna, Bat.Standard/Zoom Scan (5x5x7)/Cube 0:** Measurement grid: dx=8mm, dy=8mm, dz=5mm

Reference Value = 8.94 V/m; Power Drift = -0.0 dB

Peak SAR (extrapolated) = 0.202 W/kg

**SAR(1 g) = 0.142 mW/g**

Maximum value of SAR (measured) = 0.149 mW/g



0 dB = 0.149mW/g

# SAMSUNG FCC ID : A3LSGHZ500 -- 1900MHz PCS CDMA Head SAR

**DUT: SGH-Z500; Serial: FC-010-E**

**Program Name: SGH-Z500 GSM1900 Left (Job No.: FC-010)**

**Procedure Name: Cheek/Touch, Ch.810, Ant.Intenna, Bluetooth On, Bat.Standard**

**Procedure Notes: Meas.Tissue Temp(celsius)-21.7; Test Date-19/Jan/2005[OET Bulletin 65-Supplement C, July 2001]**

Communication System: GSM 1900; Frequency: 1909.8 MHz; Duty Cycle: 1:8.3

Medium parameters used:  $\sigma = 1.4$ ; mho/m,  $\epsilon_r = 38.9$ ;  $\rho = 1000$  kg/m<sup>3</sup>

Phantom section: Left Section

DASY4 Configuration:

- Probe: ES3DV2 - SN3017; ConvF(5.11, 5.11, 5.11); Calibrated: 2004-09-24
- Sensor-Surface: 4mm (Mechanical Surface Detection)
- Electronics: DAE3 Sn533; Calibrated: 2004-12-03
- Phantom: SAM 1800/1900 MHz; Type: SAM; Serial: TP-1143
- Measurement SW: DASY4, V4.4 Build 3; Postprocessing SW: SEMCAD, V1.8 Build 130

**Cheek/Touch, Ch.810, Ant.Intenna, Bluetooth On, Bat.Standard/Area Scan (51x71x1):** Measurement

grid: dx=20mm, dy=20mm

Maximum value of SAR (interpolated) = 0.716 mW/g

**Cheek/Touch, Ch.810, Ant.Intenna, Bluetooth On, Bat.Standard/Zoom Scan (5x5x7)/Cube 0:**

Measurement grid: dx=8mm, dy=8mm, dz=5mm

Reference Value = 8.02 V/m; Power Drift = -0.1 dB

Peak SAR (extrapolated) = 0.936 W/kg

**SAR(1 g) = 0.641 mW/g**

Maximum value of SAR (measured) = 0.682 mW/g

**Cheek/Touch, Ch.810, Ant.Intenna, Bluetooth On, Bat.Standard/Zoom Scan (5x5x7)/Cube 1:**

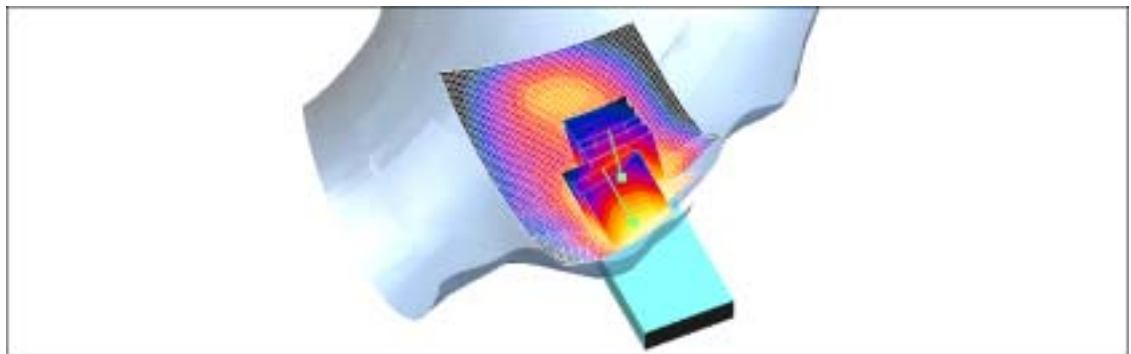
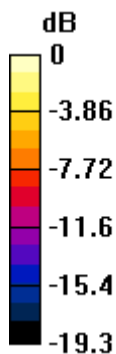
Measurement grid: dx=8mm, dy=8mm, dz=5mm

Reference Value = 8.02 V/m; Power Drift = -0.1 dB

Peak SAR (extrapolated) = 0.742 W/kg

**SAR(1 g) = 0.477 mW/g**

Maximum value of SAR (measured) = 0.504 mW/g



0 dB = 0.504mW/g

# SAMSUNG FCC ID : A3LSGHZ500 -- 1900MHz GSM1900 Body SAR

**DUT: SGH-Z500 (Body); Serial: FC-010-E**

**Program Name: SGH-Z500 GPRS1900 Body (Job No.: FC-010)**

**Procedure Name: Body, Ch.512, Ant.Intenna, Bat.Standard**

**Procedure Notes: Meas.Tissue Temp(celsius)-21.7;Test Date-19/Jan/2005[OET Bulletin 65-Supplement C, July 2001]**

Communication System: GSM1900 GPRS; Frequency: 1850.2 MHz;Duty Cycle: 1:4.15

Medium parameters used:  $\sigma = 1.55$ ; mho/m,  $\epsilon_r = 51.2$ ;  $\rho = 1000$  kg/m<sup>3</sup>

Phantom section: Flat Section

DASY4 Configuration:

- Probe: ES3DV2 - SN3017; ConvF(4.46, 4.46, 4.46); Calibrated: 2004-09-24
- Sensor-Surface: 4mm (Mechanical Surface Detection)
- Electronics: DAE3 Sn533; Calibrated: 2004-12-03
- Phantom: SAM 835/900 MHz; Type: SAM; Serial: TP-1141
- Measurement SW: DASY4, V4.4 Build 3; Postprocessing SW: SEMCAD, V1.8 Build 130

**Body, Ch.512, Ant.Intenna, Bat.Standard/Area Scan (51x71x1):** Measurement grid: dx=20mm, dy=20mm

Maximum value of SAR (interpolated) = 0.573 mW/g

**Body, Ch.512, Ant.Intenna, Bat.Standard/Zoom Scan (5x5x7)/Cube 0:** Measurement grid: dx=8mm, dy=8mm, dz=5mm

Reference Value = 11.9 V/m; Power Drift = -0.0 dB

Peak SAR (extrapolated) = 0.714 W/kg

**SAR(1 g) = 0.509 mW/g**

Maximum value of SAR (measured) = 0.551 mW/g

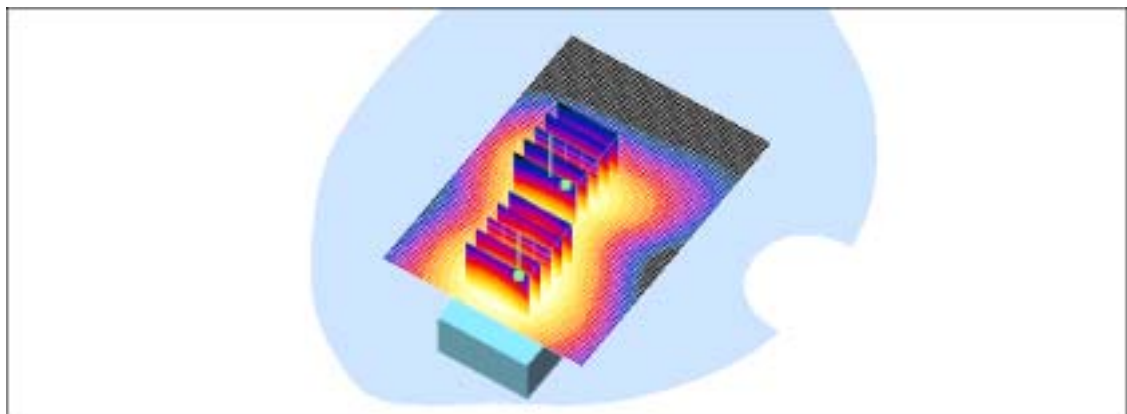
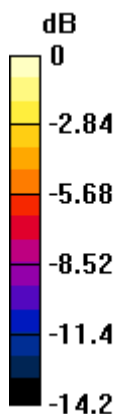
**Body, Ch.512, Ant.Intenna, Bat.Standard/Zoom Scan (5x5x7)/Cube 1:** Measurement grid: dx=8mm, dy=8mm, dz=5mm

Reference Value = 11.9 V/m; Power Drift = -0.0 dB

Peak SAR (extrapolated) = 0.587 W/kg

**SAR(1 g) = 0.389 mW/g**

Maximum value of SAR (measured) = 0.423 mW/g



0 dB = 0.423mW/g

# SAMSUNG FCC ID : A3LSGHZ500 -- 1900MHz PCS CDMA Body SAR

**DUT: SGH-Z500 (Body); Serial: FC-010-E**

**Program Name: SGH-Z500 GPRS1900 Body (Job No.: FC-010)**

**Procedure Name: Body, Ch.512, Ant.Intenna, Bluetooth On, Bat.Standard**

**Procedure Notes: Meas.Tissue Temp(celsius)-21.7; Test Date-19/Jan/2005[OET Bulletin 65-Supplement C, July 2001]**

Communication System: GSM1900 GPRS; Frequency: 1850.2 MHz; Duty Cycle: 1:4.15

Medium parameters used:  $\sigma = 1.55$ ; mho/m,  $\epsilon_r = 51.2$ ;  $\rho = 1000$  kg/m<sup>3</sup>

Phantom section: Flat Section

DASY4 Configuration:

- Probe: ES3DV2 - SN3017; ConvF(4.46, 4.46, 4.46); Calibrated: 2004-09-24
- Sensor-Surface: 4mm (Mechanical Surface Detection)
- Electronics: DAE3 Sn533; Calibrated: 2004-12-03
- Phantom: SAM 835/900 MHz; Type: SAM; Serial: TP-1141
- Measurement SW: DASY4, V4.4 Build 3; Postprocessing SW: SEMCAD, V1.8 Build 130

**Body, Ch.512, Ant.Intenna, Bluetooth On, Bat.Standard/Area Scan (51x71x1):** Measurement grid:

dx=20mm, dy=20mm

Maximum value of SAR (interpolated) = 0.505 mW/g

**Body, Ch.512, Ant.Intenna, Bluetooth On, Bat.Standard/Zoom Scan (5x5x7)/Cube 0:** Measurement grid:

dx=8mm, dy=8mm, dz=5mm

Reference Value = 12.4 V/m; Power Drift = -0.1 dB

Peak SAR (extrapolated) = 0.620 W/kg

**SAR(1 g) = 0.440 mW/g**

Maximum value of SAR (measured) = 0.475 mW/g

**Body, Ch.512, Ant.Intenna, Bluetooth On, Bat.Standard/Zoom Scan (5x5x7)/Cube 1:** Measurement grid:

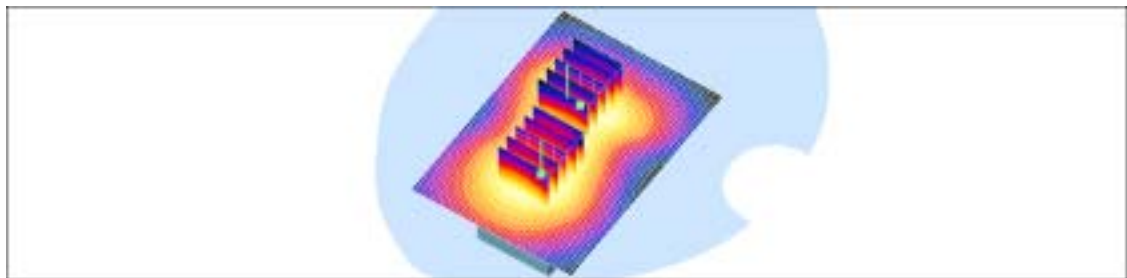
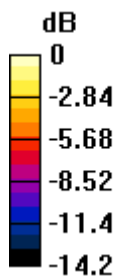
dx=8mm, dy=8mm, dz=5mm

Reference Value = 12.4 V/m; Power Drift = -0.1 dB

Peak SAR (extrapolated) = 0.579 W/kg

**SAR(1 g) = 0.374 mW/g**

Maximum value of SAR (measured) = 0.402 mW/g



0 dB = 0.402mW/g

# SAMSUNG FCC ID : A3LSGHZ500 -- 1900MHz GSM1900 Head SAR

**DUT: SGH-Z500; Serial: FC-010-E**

**Program Name: SGH-Z500 GSM1900 Left (Job No.: FC-010)**

**Procedure Name: Cheek/Touch, Ch.810, Ant.Intenna, Bat.Standard**

**Procedure Notes: Meas.Tissue Temp(celsius)-21.7; Test Date-19/Jan/2005[OET Bulletin 65-Supplement C, July 2001]**

Communication System: GSM 1900; Frequency: 1909.8 MHz; Duty Cycle: 1:8.3

Medium parameters used:  $\sigma = 1.4$ ; mho/m,  $\epsilon_r = 38.8943$ ;  $\rho = 1000$  kg/m<sup>3</sup>

Phantom section: Left Section

DASY4 Configuration:

- Probe: ES3DV2 - SN3017; ConvF(5.11, 5.11, 5.11); Calibrated: 2004-09-24
- Sensor-Surface: 4mm (Mechanical Surface Detection)
- Electronics: DAE3 Sn533; Calibrated: 2004-12-03
- Phantom: SAM 1800/1900 MHz; Type: SAM; Serial: TP-1143
- Measurement SW: DASY4, V4.4 Build 3; Postprocessing SW: SEMCAD, V1.8 Build 130

**Cheek/Touch, Ch.810, Ant.Intenna, Bat.Standard/Area Scan (51x71x1):** Measurement grid: dx=20mm, dy=20mm

Maximum value of SAR (interpolated) = 0.715 mW/g

**Cheek/Touch, Ch.810, Ant.Intenna, Bat.Standard/Zoom Scan (5x5x7)/Cube 0:** Measurement grid: dx=8mm, dy=8mm, dz=5mm

Reference Value = 7.6 V/m; Power Drift = -0.1 dB

Peak SAR (extrapolated) = 0.928 W/kg

**SAR(1 g) = 0.648 mW/g**

Maximum value of SAR (measured) = 0.679 mW/g

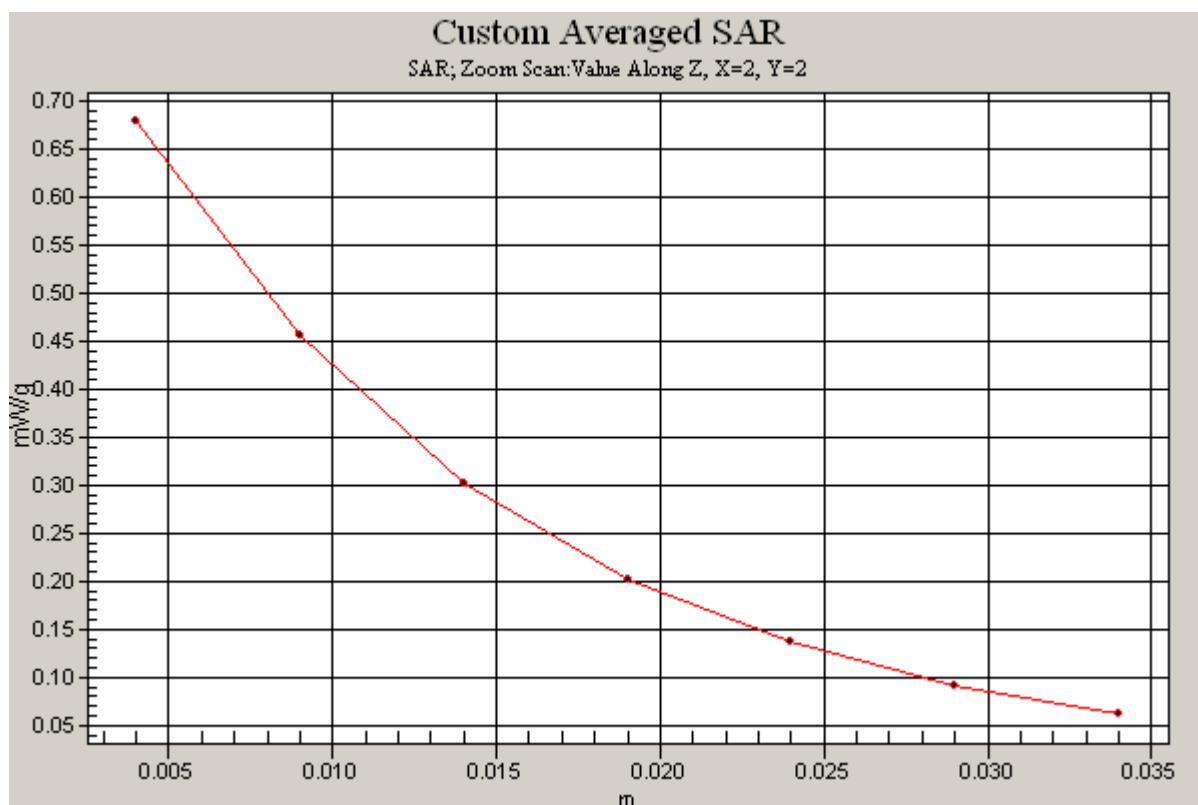
**Cheek/Touch, Ch.810, Ant.Intenna, Bat.Standard/Zoom Scan (5x5x7)/Cube 1:** Measurement grid: dx=8mm, dy=8mm, dz=5mm

Reference Value = 7.6 V/m; Power Drift = -0.1 dB

Peak SAR (extrapolated) = 0.779 W/kg

**SAR(1 g) = 0.502 mW/g**

Maximum value of SAR (measured) = 0.541 mW/g



# SAMSUNG FCC ID : A3LSGHZ500 -- 1900MHz GSM1900 Body SAR

**DUT: SGH-Z500 (Body); Serial: FC-010-E**

**Program Name: SGH-Z500 GPRS1900 Body (Job No.: FC-010)**

**Procedure Name: Body, Ch.512, Ant.Intenna, Bat.Standard**

**Procedure Notes: Meas.Tissue Temp(celsius)-21.6; Test Date-19/Jan/2005[OET Bulletin 65-Supplement C, July 2001]**

Communication System: GSM1900 GPRS; Frequency: 1850.2 MHz; Duty Cycle: 1:4.15

Medium parameters used:  $\sigma = 1.55$ ; mho/m,  $\epsilon_r = 51.2355$ ;  $\rho = 1000$  kg/m<sup>3</sup>

Phantom section: Flat Section

DASY4 Configuration:

- Probe: ES3DV2 - SN3017; ConvF(4.46, 4.46, 4.46); Calibrated: 2004-09-24
- Sensor-Surface: 4mm (Mechanical Surface Detection)
- Electronics: DAE3 Sn533; Calibrated: 2004-12-03
- Phantom: SAM 835/900 MHz; Type: SAM; Serial: TP-1141
- Measurement SW: DASY4, V4.4 Build 3; Postprocessing SW: SEMCAD, V1.8 Build 130

**Body, Ch.512, Ant.Intenna, Bat.Standard/Area Scan (51x71x1):** Measurement grid: dx=20mm, dy=20mm  
Maximum value of SAR (interpolated) = 0.573 mW/g

**Body, Ch.512, Ant.Intenna, Bat.Standard/Zoom Scan (5x5x7)/Cube 0:** Measurement grid: dx=8mm, dy=8mm, dz=5mm

Reference Value = 11.9 V/m; Power Drift = -0.0 dB

Peak SAR (extrapolated) = 0.714 W/kg

**SAR(1 g) = 0.509 mW/g**

Maximum value of SAR (measured) = 0.551 mW/g

**Body, Ch.512, Ant.Intenna, Bat.Standard/Zoom Scan (5x5x7)/Cube 1:** Measurement grid: dx=8mm, dy=8mm, dz=5mm

Reference Value = 11.9 V/m; Power Drift = -0.0 dB

Peak SAR (extrapolated) = 0.587 W/kg

**SAR(1 g) = 0.389 mW/g**

Maximum value of SAR (measured) = 0.423 mW/g

