

SAMSUNG FCC ID : A3LSGHZ320I 1900MHz GSM1900 Head SAR

DUT: SGH-Z320i(Down); Serial: FC-166-A

Program Name: SGH-Z320i GSM1900 Right (Slide.Down, Job No. : FC-166)

Procedure Name: Cheek/Touch, Ch.661, Ant.Intenna, Bat.Standard

Procedure Notes: Meas.Tissue Temp(celsius)-21.5; Ambient Temp-22.6 Test Date-07/Dec/2005 [OET Bulletin 65-Supplement C, July 2001]

Communication System: GSM 1900; Frequency: 1880 MHz;Duty Cycle: 1:8.3

Medium parameters used: $f = 1880$ MHz; $\sigma = 1.38$ mho/m; $\epsilon_r = 39.8$; $\rho = 1000$ kg/m³

Phantom section: Right Section

DASY4 Configuration:

- Probe: ES3DV3 - SN3080; ConvF(4.92, 4.92, 4.92); Calibrated: 2005-05-26
- Sensor-Surface: 4mm (Mechanical Surface Detection)
- Electronics: DAE3 Sn486; Calibrated: 2005-08-30
- Phantom: SAM 1800/1900 MHz; Type: SAM; Serial: TP-1248
- Measurement SW: DASY4, V4.6 Build 23; Postprocessing SW: SEMCAD, V1.8 Build 160

Cheek/Touch, Ch.661, Ant.Intenna, Bat.Standard/Area Scan (51x71x1): Measurement grid: dx=20mm, dy=20mm

Maximum value of SAR (interpolated) = 0.514 mW/g

Cheek/Touch, Ch.661, Ant.Intenna, Bat.Standard/Zoom Scan (5x5x7)/Cube 0:

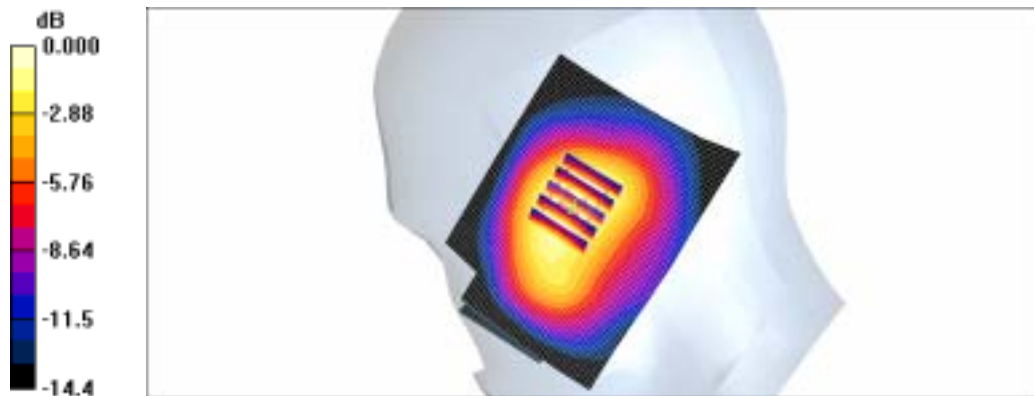
Measurement grid: dx=8mm, dy=8mm, dz=5mm

Reference Value = 15.2 V/m; Power Drift = -0.024 dB

Peak SAR (extrapolated) = 0.640 W/kg

SAR(1 g) = 0.450 mW/g

Maximum value of SAR (measured) = 0.476 mW/g



0 dB = 0.476mW/g

SAMSUNG FCC ID : A3LSGHZ320I 1900MHz GSM1900 Head SAR

DUT: SGH-Z320i(Down); Serial: FC-166-A

Program Name: SGH-Z320i GSM1900 Right (Slide.Down, Job No. : FC-166)

Procedure Name: Ear/Tilt, Ch.661, Ant.Intenna, Bat.Standard

Procedure Notes: Meas.Tissue Temp(celsius)-21.5; Ambient Temp-22.6 Test Date-07/Dec/2005 [OET Bulletin 65-Supplement C, July 2001]

Communication System: GSM 1900; Frequency: 1880 MHz;Duty Cycle: 1:8.3

Medium parameters used: $f = 1880$ MHz; $\sigma = 1.38$ mho/m; $\epsilon_r = 39.8$; $\rho = 1000$ kg/m³

Phantom section: Right Section

DASY4 Configuration:

- Probe: ES3DV3 - SN3080; ConvF(4.92, 4.92, 4.92); Calibrated: 2005-05-26
- Sensor-Surface: 4mm (Mechanical Surface Detection)
- Electronics: DAE3 Sn486; Calibrated: 2005-08-30
- Phantom: SAM 1800/1900 MHz; Type: SAM; Serial: TP-1248
- Measurement SW: DASY4, V4.6 Build 23; Postprocessing SW: SEMCAD, V1.8 Build 160

Ear/Tilt, Ch.661, Ant.Intenna, Bat.Standard/Area Scan (51x71x1): Measurement grid: dx=20mm, dy=20mm

Maximum value of SAR (interpolated) = 0.446 mW/g

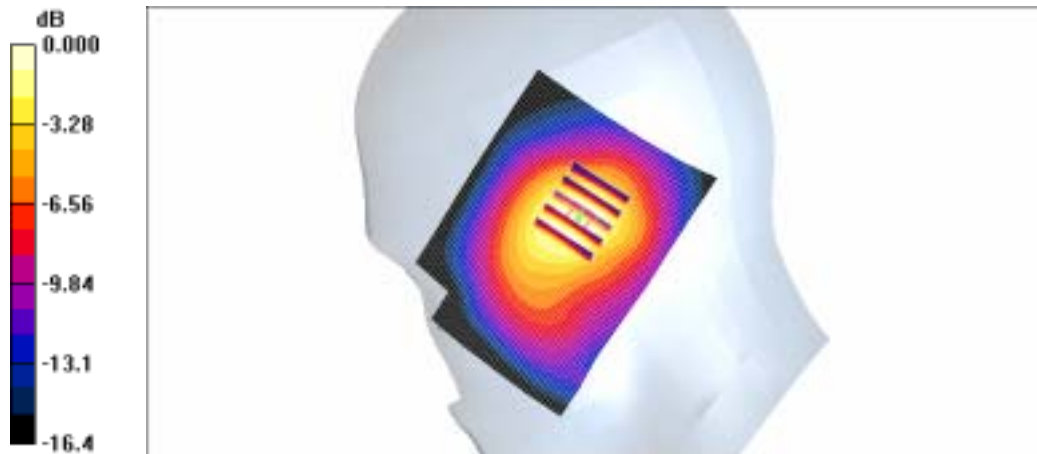
Ear/Tilt, Ch.661, Ant.Intenna, Bat.Standard/Zoom Scan (5x5x7)/Cube 0: Measurement grid: dx=8mm, dy=8mm, dz=5mm

Reference Value = 16.2 V/m; Power Drift = 0.026 dB

Peak SAR (extrapolated) = 0.579 W/kg

SAR(1 g) = 0.388 mW/g

Maximum value of SAR (measured) = 0.423 mW/g



0 dB = 0.423mW/g

SAMSUNG FCC ID : A3LSGHZ320I 1900MHz GSM1900 Head SAR

DUT: SGH-Z320i(Down); Serial: FC-166-A

Program Name: SGH-Z320i GSM1900 Left (Slide.Down, Job No. : FC-166)

Procedure Name: Cheek/Touch, Ch.661, Ant.Intenna, Bat.Standard

Procedure Notes: Meas.Tissue Temp(celsius)-21.5; Ambient Temp-22.6 Test Date-07/Dec/2005 [OET Bulletin 65-Supplement C, July 2001]

Communication System: GSM 1900; Frequency: 1880 MHz;Duty Cycle: 1:8.3

Medium parameters used: $f = 1880$ MHz; $\sigma = 1.38$ mho/m; $\epsilon_r = 39.8$; $\rho = 1000$ kg/m³

Phantom section: Left Section

DASY4 Configuration:

- Probe: ES3DV3 - SN3080; ConvF(4.92, 4.92, 4.92); Calibrated: 2005-05-26
- Sensor-Surface: 4mm (Mechanical Surface Detection)
- Electronics: DAE3 Sn486; Calibrated: 2005-08-30
- Phantom: SAM 1800/1900 MHz; Type: SAM; Serial: TP-1248
- Measurement SW: DASY4, V4.6 Build 23; Postprocessing SW: SEMCAD, V1.8 Build 160

Cheek/Touch, Ch.661, Ant.Intenna, Bat.Standard/Zoom Scan (5x5x7)/Cube 0:

Measurement grid: dx=8mm, dy=8mm, dz=5mm

Reference Value = 13.3 V/m; Power Drift = -0.164 dB

Peak SAR (extrapolated) = 0.512 W/kg

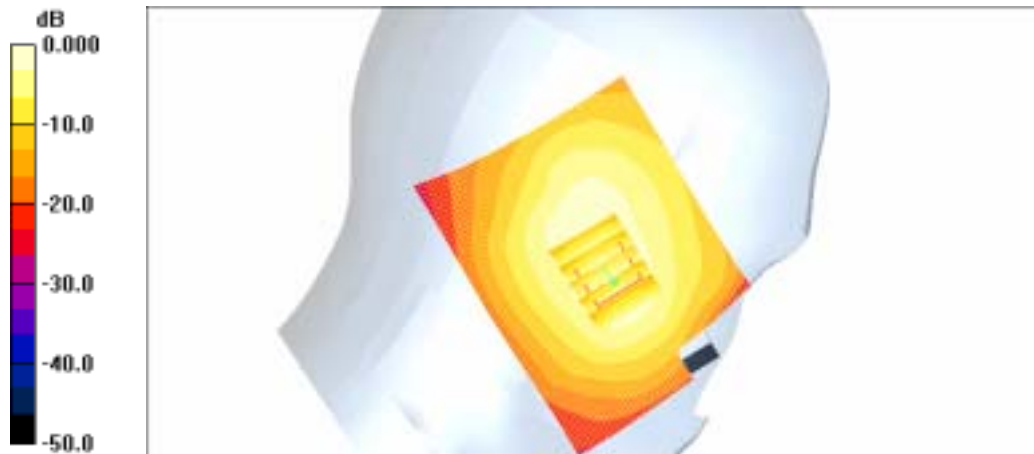
SAR(1 g) = 0.375 mW/g

Maximum value of SAR (measured) = 0.397 mW/g

Cheek/Touch, Ch.661, Ant.Intenna, Bat.Standard/Area Scan (51x71x1): Measurement

grid: dx=20mm, dy=20mm

Maximum value of SAR (interpolated) = 0.451 mW/g



0 dB = 0.451mW/g

SAMSUNG FCC ID : A3LSGHZ320I 1900MHz GSM1900 Head SAR

DUT: SGH-Z320i(Down); Serial: FC-166-A

Program Name: SGH-Z320i GSM1900 Left (Slide.Down, Job No. : FC-166)

Procedure Name: Ear/Tilt, Ch.661, Ant.Intenna, Bat.Standard

Procedure Notes: Meas.Tissue Temp(celsius)-21.5; Ambient Temp-22.6 Test Date-07/Dec/2005 [OET Bulletin 65-Supplement C, July 2001]

Communication System: GSM 1900; Frequency: 1880 MHz;Duty Cycle: 1:8.3

Medium parameters used: $f = 1880$ MHz; $\sigma = 1.38$ mho/m; $\epsilon_r = 39.8$; $\rho = 1000$ kg/m³

Phantom section: Left Section

DASY4 Configuration:

- Probe: ES3DV3 - SN3080; ConvF(4.92, 4.92, 4.92); Calibrated: 2005-05-26
- Sensor-Surface: 4mm (Mechanical Surface Detection)
- Electronics: DAE3 Sn486; Calibrated: 2005-08-30
- Phantom: SAM 1800/1900 MHz; Type: SAM; Serial: TP-1248
- Measurement SW: DASY4, V4.6 Build 23; Postprocessing SW: SEMCAD, V1.8 Build 160

Ear/Tilt, Ch.661, Ant.Intenna, Bat.Standard/Area Scan (51x71x1): Measurement grid: dx=20mm, dy=20mm

Maximum value of SAR (interpolated) = 0.386 mW/g

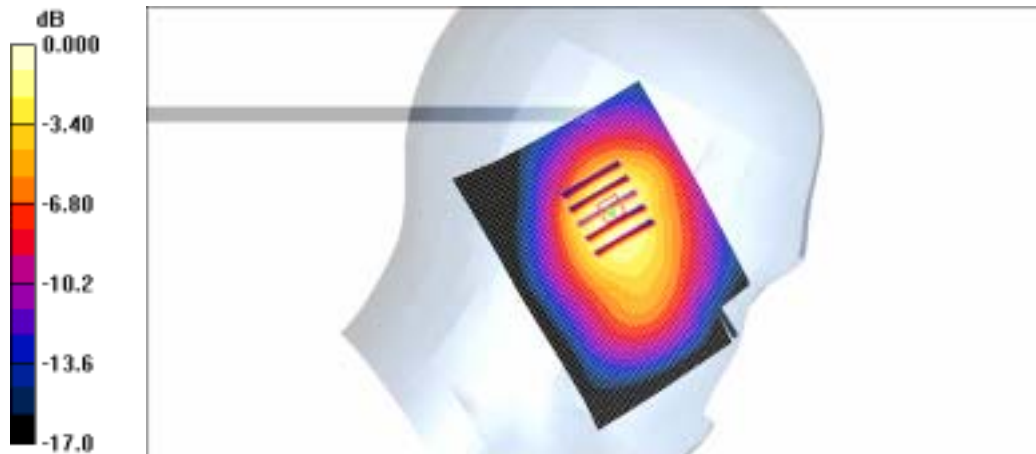
Ear/Tilt, Ch.661, Ant.Intenna, Bat.Standard/Zoom Scan (5x5x7)/Cube 0: Measurement grid: dx=8mm, dy=8mm, dz=5mm

Reference Value = 14.7 V/m; Power Drift = -0.151 dB

Peak SAR (extrapolated) = 0.508 W/kg

SAR(1 g) = 0.333 mW/g

Maximum value of SAR (measured) = 0.364 mW/g



0 dB = 0.364mW/g

SAMSUNG FCC ID : A3LSGHZ320I 1900MHz GSM1900 Head SAR

DUT: SGH-Z320i(Down); Serial: FC-166-A

Program Name: SGH-Z320i GSM1900 Right (Slide.Down, Job No. : FC-166)

Procedure Name: Cheek/Touch, Ch.661, Ant.Intenna, Bat.Standard With BT ON

Procedure Notes: Meas.Tissue Temp(celsius)-21.5; Ambient Temp-22.6 Test Date-07/Dec/2005 [OET Bulletin 65-Supplement C, July 2001]

Communication System: GSM 1900; Frequency: 1880 MHz;Duty Cycle: 1:8.3

Medium parameters used: $f = 1880$ MHz; $\sigma = 1.38$ mho/m; $\epsilon_r = 39.8$; $\rho = 1000$ kg/m³

Phantom section: Right Section

DASY4 Configuration:

- Probe: ES3DV3 - SN3080; ConvF(4.92, 4.92, 4.92); Calibrated: 2005-05-26
- Sensor-Surface: 4mm (Mechanical Surface Detection)
- Electronics: DAE3 Sn486; Calibrated: 2005-08-30
- Phantom: SAM 1800/1900 MHz; Type: SAM; Serial: TP-1248
- Measurement SW: DASY4, V4.6 Build 23; Postprocessing SW: SEMCAD, V1.8 Build 160

Cheek/Touch, Ch.661, Ant.Intenna, Bat.Standard With BT ON/Area Scan (51x71x1):

Measurement grid: dx=20mm, dy=20mm

Maximum value of SAR (interpolated) = 0.530 mW/g

Cheek/Touch, Ch.661, Ant.Intenna, Bat.Standard With BT ON/Zoom Scan (5x5x7)/Cube

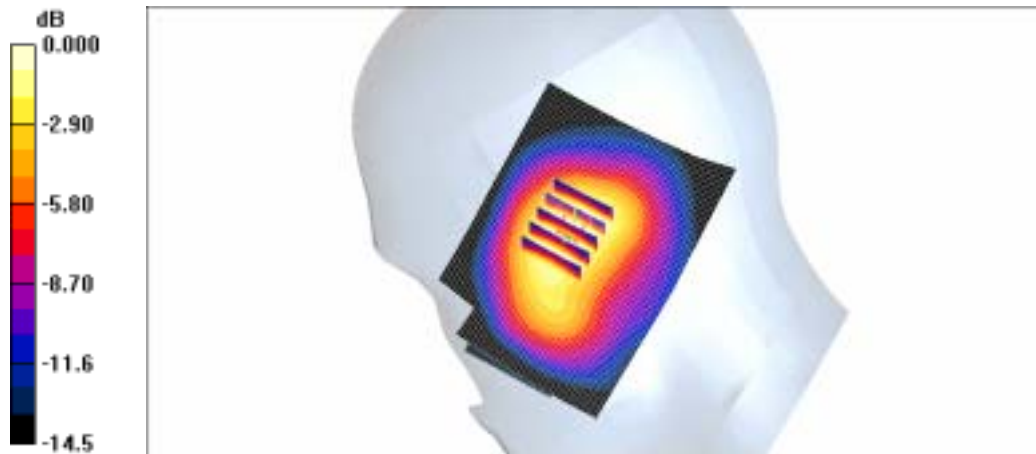
0: Measurement grid: dx=8mm, dy=8mm, dz=5mm

Reference Value = 15.6 V/m; Power Drift = -0.038 dB

Peak SAR (extrapolated) = 0.653 W/kg

SAR(1 g) = 0.456 mW/g

Maximum value of SAR (measured) = 0.489 mW/g



0 dB = 0.489mW/g

SAMSUNG FCC ID : A3LSGHZ320I 1900MHz GPRS1900 Body SAR

DUT: SGH-Z320i(Body); Serial: FC-166-A

Program Name: SGH-Z320i GSM1900 Body (Job No. : FC-166)

Procedure Name: Body, Ch.661, Ant.Intenna, Bat.Standard

Procedure Notes: Meas.Tissue Temp(celsius)-21.4; Ambient Temp-22.1 Test Date-07/Dec/2005 [OET Bulletin 65-Supplement C, July 2001]

Communication System: Body GPRS ; Frequency: 1880 MHz;Duty Cycle: 1:4.15

Medium parameters used: $f = 1880$ MHz; $\sigma = 1.54$ mho/m; $\epsilon_r = 52.4$; $\rho = 1000$ kg/m³

Phantom section: Flat Section

DASY4 Configuration:

- Probe: ES3DV3 - SN3080; ConvF(4.42, 4.42, 4.42); Calibrated: 2005-05-26
- Sensor-Surface: 4mm (Mechanical Surface Detection)
- Electronics: DAE3 Sn486; Calibrated: 2005-08-30
- Phantom: SAM 835/900 MHz; Type: SAM; Serial: TP-1247
- Measurement SW: DASY4, V4.6 Build 23; Postprocessing SW: SEMCAD, V1.8 Build 160

Body, Ch.661, Ant.Intenna, Bat.Standard/Area Scan (51x71x1): Measurement grid:

dx=20mm, dy=20mm

Maximum value of SAR (interpolated) = 0.652 mW/g

Body, Ch.661, Ant.Intenna, Bat.Standard/Zoom Scan (5x5x7)/Cube 0: Measurement grid:

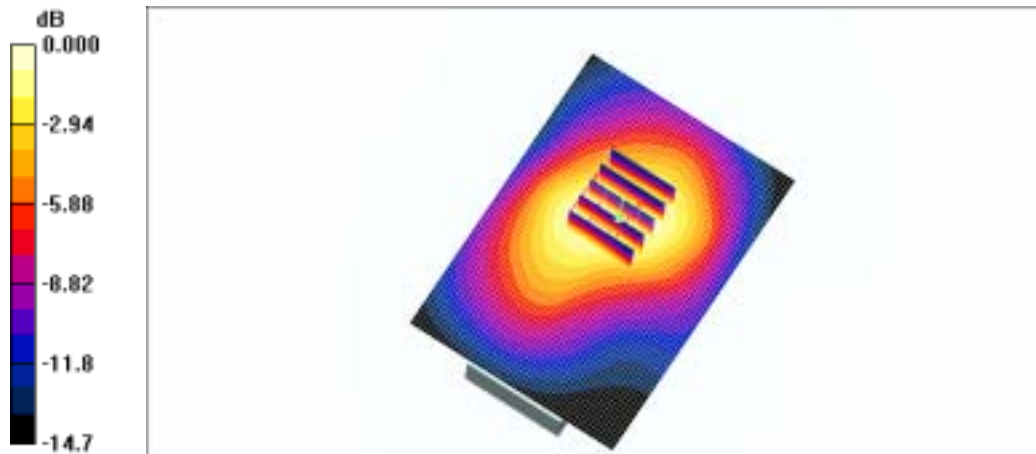
dx=8mm, dy=8mm, dz=5mm

Reference Value = 20.0 V/m; Power Drift = 0.009 dB

Peak SAR (extrapolated) = 0.853 W/kg

SAR(1 g) = 0.569 mW/g

Maximum value of SAR (measured) = 0.608 mW/g



0 dB = 0.608mW/g

SAMSUNG FCC ID : A3LSGHZ320I 1900MHz GPRS1900 Body SAR

DUT: SGH-Z320i(Body); Serial: FC-166-A

Program Name: SGH-Z320i GSM1900 Body (Job No. : FC-166)

Procedure Name: Body, Ch.661, Ant.Intenna, Bat.Standard with BT ON

Procedure Notes: Meas.Tissue Temp(celsius)-21.4; Ambient Temp-22.1 Test Date-07/Dec/2005 [OET Bulletin 65-Supplement C, July 2001]

Communication System: Body GPRS ; Frequency: 1880 MHz;Duty Cycle: 1:4.15

Medium parameters used: $f = 1880$ MHz; $\sigma = 1.54$ mho/m; $\epsilon_r = 52.4$; $\rho = 1000$ kg/m³

Phantom section: Flat Section

DASY4 Configuration:

- Probe: ES3DV3 - SN3080; ConvF(4.42, 4.42, 4.42); Calibrated: 2005-05-26
- Sensor-Surface: 4mm (Mechanical Surface Detection)
- Electronics: DAE3 Sn486; Calibrated: 2005-08-30
- Phantom: SAM 835/900 MHz; Type: SAM; Serial: TP-1247
- Measurement SW: DASY4, V4.6 Build 23; Postprocessing SW: SEMCAD, V1.8 Build 160

Body, Ch.661, Ant.Intenna, Bat.Standard with BT ON/Area Scan (51x71x1):

Measurement grid: dx=20mm, dy=20mm

Maximum value of SAR (interpolated) = 0.565 mW/g

Body, Ch.661, Ant.Intenna, Bat.Standard with BT ON/Zoom Scan (5x5x7)/Cube 0:

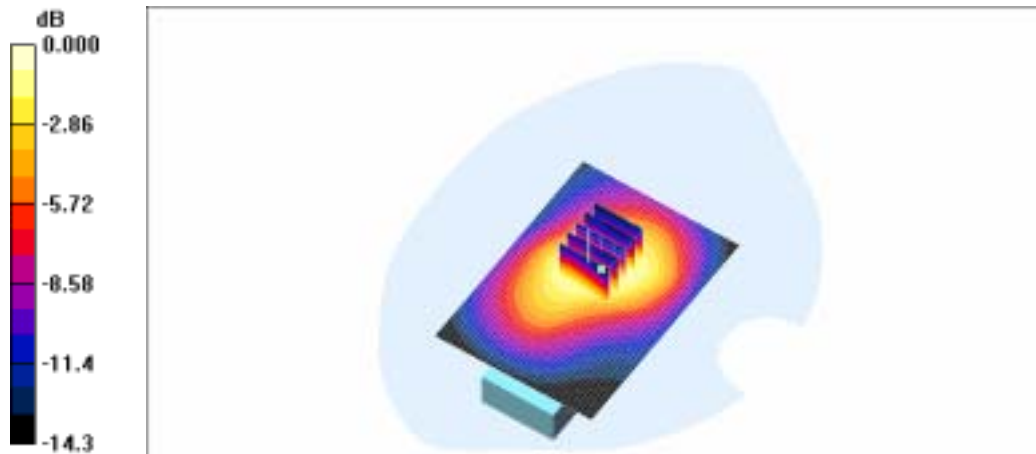
Measurement grid: dx=8mm, dy=8mm, dz=5mm

Reference Value = 18.6 V/m; Power Drift = -0.022 dB

Peak SAR (extrapolated) = 0.722 W/kg

SAR(1 g) = 0.490 mW/g

Maximum value of SAR (measured) = 0.531 mW/g



0 dB = 0.531mW/g

SAMSUNG FCC ID : A3LSGHZ320I 1900MHz GSM1900 Head SAR

DUT: SGH-Z320i(Down); Serial: FC-166-A

Program Name: SGH-Z320i GSM1900 Right (Slide.Down, Job No. : FC-166)

Procedure Name: Cheek/Touch, Ch.661, Ant.Intenna, Bat.Standard

Procedure Notes: Meas.Tissue Temp(celsius)-21.5; Ambient Temp-22.6 Test Date-07/Dec/2005 [OET Bulletin 65-Supplement C, July 2001]

Communication System: GSM 1900; Frequency: 1880 MHz;Duty Cycle: 1:8.3

Medium parameters used: $f = 1880$ MHz; $\sigma = 1.38$ mho/m; $\epsilon_r = 39.8$; $\rho = 1000$ kg/m³

Phantom section: Right Section

DASY4 Configuration:

- Probe: ES3DV3 - SN3080; ConvF(4.92, 4.92, 4.92); Calibrated: 2005-05-26
- Sensor-Surface: 4mm (Mechanical Surface Detection)
- Electronics: DAE3 Sn486; Calibrated: 2005-08-30
- Phantom: SAM 1800/1900 MHz; Type: SAM; Serial: TP-1248
- Measurement SW: DASY4, V4.6 Build 23; Postprocessing SW: SEMCAD, V1.8 Build 160

Cheek/Touch, Ch.661, Ant.Intenna, Bat.Standard/Area Scan (51x71x1): Measurement grid: dx=20mm, dy=20mm

Maximum value of SAR (interpolated) = 0.514 mW/g

Cheek/Touch, Ch.661, Ant.Intenna, Bat.Standard/Zoom Scan (5x5x7)/Cube 0:

Measurement grid: dx=8mm, dy=8mm, dz=5mm

Reference Value = 15.2 V/m; Power Drift = -0.024 dB

Peak SAR (extrapolated) = 0.640 W/kg

SAR(1 g) = 0.450 mW/g

Maximum value of SAR (measured) = 0.476 mW/g



SAMSUNG FCC ID : A3LSGHZ320I 1900MHz GSM1900 Head SAR

DUT: SGH-Z320i(Down); Serial: FC-166-A

Program Name: SGH-Z320i GSM1900 Right (Slide.Down, Job No. : FC-166)

Procedure Name: Cheek/Touch, Ch.661, Ant.Intenna, Bat.Standard With BT ON

Procedure Notes: Meas.Tissue Temp(celsius)-21.5; Ambient Temp-22.6 Test Date-07/Dec/2005 [OET Bulletin 65-Supplement C, July 2001]

Communication System: GSM 1900; Frequency: 1880 MHz;Duty Cycle: 1:8.3

Medium parameters used: $f = 1880$ MHz; $\sigma = 1.38$ mho/m; $\epsilon_r = 39.8$; $\rho = 1000$ kg/m³

Phantom section: Right Section

DASY4 Configuration:

- Probe: ES3DV3 - SN3080; ConvF(4.92, 4.92, 4.92); Calibrated: 2005-05-26
- Sensor-Surface: 4mm (Mechanical Surface Detection)
- Electronics: DAE3 Sn486; Calibrated: 2005-08-30
- Phantom: SAM 1800/1900 MHz; Type: SAM; Serial: TP-1248
- Measurement SW: DASY4, V4.6 Build 23; Postprocessing SW: SEMCAD, V1.8 Build 160

Cheek/Touch, Ch.661, Ant.Intenna, Bat.Standard With BT ON/Area Scan (51x71x1):

Measurement grid: dx=20mm, dy=20mm

Maximum value of SAR (interpolated) = 0.530 mW/g

Cheek/Touch, Ch.661, Ant.Intenna, Bat.Standard With BT ON/Zoom Scan (5x5x7)/Cube

0: Measurement grid: dx=8mm, dy=8mm, dz=5mm

Reference Value = 15.6 V/m; Power Drift = -0.038 dB

Peak SAR (extrapolated) = 0.653 W/kg

SAR(1 g) = 0.456 mW/g

Maximum value of SAR (measured) = 0.489 mW/g



SAMSUNG FCC ID : A3LSGHZ320I 1900MHz GPRS1900 Body SAR

DUT: SGH-Z320i(Body); Serial: FC-166-A

Program Name: SGH-Z320i GSM1900 Body (Job No. : FC-166)

Procedure Name: Body, Ch.661, Ant.Intenna, Bat.Standard

Procedure Notes: Meas.Tissue Temp(celsius)-21.4; Ambient Temp-22.1 Test Date-07/Dec/2005 [OET Bulletin 65-Supplement C, July 2001]

Communication System: Body GPRS ; Frequency: 1880 MHz;Duty Cycle: 1:4.15

Medium parameters used: $f = 1880$ MHz; $\sigma = 1.54$ mho/m; $\epsilon_r = 52.4$; $\rho = 1000$ kg/m³

Phantom section: Flat Section

DASY4 Configuration:

- Probe: ES3DV3 - SN3080; ConvF(4.42, 4.42, 4.42); Calibrated: 2005-05-26
- Sensor-Surface: 4mm (Mechanical Surface Detection)
- Electronics: DAE3 Sn486; Calibrated: 2005-08-30
- Phantom: SAM 835/900 MHz; Type: SAM; Serial: TP-1247
- Measurement SW: DASY4, V4.6 Build 23; Postprocessing SW: SEMCAD, V1.8 Build 160

Body, Ch.661, Ant.Intenna, Bat.Standard/Area Scan (51x71x1): Measurement grid:

dx=20mm, dy=20mm

Maximum value of SAR (interpolated) = 0.652 mW/g

Body, Ch.661, Ant.Intenna, Bat.Standard/Zoom Scan (5x5x7)/Cube 0: Measurement grid:

dx=8mm, dy=8mm, dz=5mm

Reference Value = 20.0 V/m; Power Drift = 0.009 dB

Peak SAR (extrapolated) = 0.853 W/kg

SAR(1 g) = 0.569 mW/g

Maximum value of SAR (measured) = 0.608 mW/g



SAMSUNG FCC ID : A3LSGHZ320I 1900MHz GPRS1900 Body SAR

DUT: SGH-Z320i(Body); Serial: FC-166-A

Program Name: SGH-Z320i GSM1900 Body (Job No. : FC-166)

Procedure Name: Body, Ch.661, Ant.Intenna, Bat.Standard with BT ON

Procedure Notes: Meas.Tissue Temp(celsius)-21.4; Ambient Temp-22.1 Test Date-07/Dec/2005 [OET Bulletin 65-Supplement C, July 2001]

Communication System: Body GPRS ; Frequency: 1880 MHz;Duty Cycle: 1:4.15

Medium parameters used: $f = 1880$ MHz; $\sigma = 1.54$ mho/m; $\epsilon_r = 52.4$; $\rho = 1000$ kg/m³

Phantom section: Flat Section

DASY4 Configuration:

- Probe: ES3DV3 - SN3080; ConvF(4.42, 4.42, 4.42); Calibrated: 2005-05-26
- Sensor-Surface: 4mm (Mechanical Surface Detection)
- Electronics: DAE3 Sn486; Calibrated: 2005-08-30
- Phantom: SAM 835/900 MHz; Type: SAM; Serial: TP-1247
- Measurement SW: DASY4, V4.6 Build 23; Postprocessing SW: SEMCAD, V1.8 Build 160

Body, Ch.661, Ant.Intenna, Bat.Standard with BT ON/Area Scan (51x71x1):

Measurement grid: dx=20mm, dy=20mm

Maximum value of SAR (interpolated) = 0.565 mW/g

Body, Ch.661, Ant.Intenna, Bat.Standard with BT ON/Zoom Scan (5x5x7)/Cube 0:

Measurement grid: dx=8mm, dy=8mm, dz=5mm

Reference Value = 18.6 V/m; Power Drift = -0.022 dB

Peak SAR (extrapolated) = 0.722 W/kg

SAR(1 g) = 0.490 mW/g

Maximum value of SAR (measured) = 0.531 mW/g

