

SAMSUNG FCC ID : A3LSGHZ150 1900MHz GSM1900 Head SAR

DUT: SGH-Z150; Serial: FC-174-E

Program Name: SGH-Z150 GSM1900 Right (Job No. : FC-174)

Procedure Name: Cheek/Touch, Ch.512, Ant.Intenna, Bat.Standard

Procedure Notes: Meas. Ambient Temp-22.1, Tissue Temp(celsius)-21.2; Test Date-09/Jan/2006 [OET Bulletin 65-Supplement C, July 2001]

Communication System: GSM 1900; Frequency: 1850.2 MHz; Duty Cycle: 1:8.3

Medium parameters used:  $f = 1850.2$  MHz;  $\sigma = 1.43$  mho/m;  $\epsilon_r = 40.1$ ;  $\rho = 1000$  kg/m<sup>3</sup>

Phantom section: Right Section

DASY4 Configuration:

- Probe: ES3DV3 - SN3080; ConvF(4.92, 4.92, 4.92); Calibrated: 2005-05-26
- Sensor-Surface: 4mm (Mechanical Surface Detection)
- Electronics: DAE4 Sn533; Calibrated: 2005-11-21
- Phantom: PHANTOM #2; Type: SAM; Serial: TP-1141
- Measurement SW: DASY4, V4.6 Build 23; Postprocessing SW: SEMCAD, V1.8 Build 160

**Cheek/Touch, Ch.512, Ant.Intenna, Bat.Standard/Area Scan (51x71x1):** Measurement grid: dx=20mm, dy=20mm

Maximum value of SAR (interpolated) = 0.674 mW/g

**Cheek/Touch, Ch.512, Ant.Intenna, Bat.Standard/Zoom Scan (5x5x7)/Cube 0:**

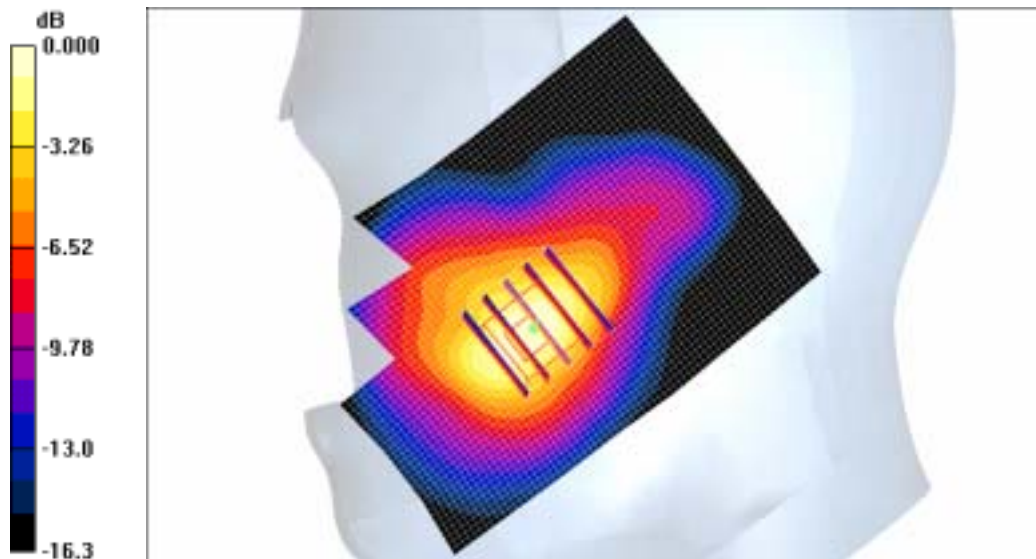
Measurement grid: dx=8mm, dy=8mm, dz=5mm

Reference Value = 5.14 V/m; Power Drift = 0.005 dB

Peak SAR (extrapolated) = 0.890 W/kg

**SAR(1 g) = 0.620 mW/g**

Maximum value of SAR (measured) = 0.667 mW/g



0 dB = 0.667mW/g

SAMSUNG FCC ID : A3LSGHZ150 1900MHz GSM1900 Head SAR

DUT: SGH-Z150; Serial: FC-174-E

Program Name: SGH-Z150 GSM1900 Right (Job No. : FC-174)

Procedure Name: Ear/Tilt, Ch.661, Ant.Intenna, Bat.Standard

Procedure Notes: Meas. Ambient Temp-22.1, Tissue Temp(celsius)-21.2; Test Date-09/Jan/2006 [OET Bulletin 65-Supplement C, July 2001]

Communication System: GSM 1900; Frequency: 1880 MHz; Duty Cycle: 1:8.3

Medium parameters used:  $f = 1880$  MHz;  $\sigma = 1.43$  mho/m;  $\epsilon_r = 40.1$ ;  $\rho = 1000$  kg/m<sup>3</sup>

Phantom section: Right Section

DASY4 Configuration:

- Probe: ES3DV3 - SN3080; ConvF(4.92, 4.92, 4.92); Calibrated: 2005-05-26
- Sensor-Surface: 4mm (Mechanical Surface Detection)
- Electronics: DAE4 Sn533; Calibrated: 2005-11-21
- Phantom: PHANTOM #2; Type: SAM; Serial: TP-1141
- Measurement SW: DASY4, V4.6 Build 23; Postprocessing SW: SEMCAD, V1.8 Build 160

Ear/Tilt, Ch.661, Ant.Intenna, Bat.Standard/Area Scan (51x71x1): Measurement grid:

$dx=20$ mm,  $dy=20$ mm

Maximum value of SAR (interpolated) = 0.147 mW/g

Ear/Tilt, Ch.661, Ant.Intenna, Bat.Standard/Zoom Scan (5x5x7)/Cube 0: Measurement

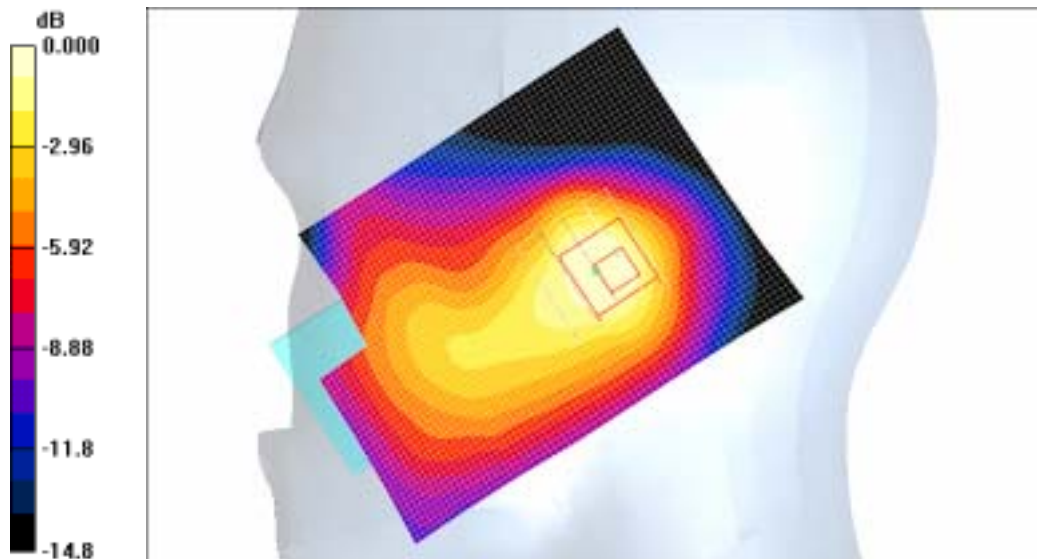
grid:  $dx=8$ mm,  $dy=8$ mm,  $dz=5$ mm

Reference Value = 7.15 V/m; Power Drift = -0.031 dB

Peak SAR (extrapolated) = 0.173 W/kg

**SAR(1 g) = 0.119 mW/g**

Maximum value of SAR (measured) = 0.125 mW/g



0 dB = 0.125mW/g

SAMSUNG FCC ID : A3LSGHZ150 1900MHz GSM1900 Head SAR

DUT: SGH-Z150; Serial: FC-174-E

Program Name: SGH-Z150 GSM1900 Left (Job No. : FC-174)

Procedure Name: Cheek/Touch, Ch.512, Ant.Intenna, Bat.Standard

Procedure Notes: Meas. Ambient Temp-22.1, Tissue Temp(celsius)-21.2; Test Date-09/Jan/2006 [OET Bulletin 65-Supplement C, July 2001]

Communication System: GSM 1900; Frequency: 1850.2 MHz; Duty Cycle: 1:8.3

Medium parameters used:  $f = 1850.2$  MHz;  $\sigma = 1.43$  mho/m;  $\epsilon_r = 40.1$ ;  $\rho = 1000$  kg/m<sup>3</sup>

Phantom section: Left Section

DASY4 Configuration:

- Probe: ES3DV3 - SN3080; ConvF(4.92, 4.92, 4.92); Calibrated: 2005-05-26
- Sensor-Surface: 4mm (Mechanical Surface Detection)
- Electronics: DAE4 Sn533; Calibrated: 2005-11-21
- Phantom: PHANTOM #2; Type: SAM; Serial: TP-1141
- Measurement SW: DASY4, V4.6 Build 23; Postprocessing SW: SEMCAD, V1.8 Build 160

**Cheek/Touch, Ch.512, Ant.Intenna, Bat.Standard/Zoom Scan (5x5x7)/Cube 0:**

Measurement grid: dx=8mm, dy=8mm, dz=5mm

Reference Value = 7.65 V/m; Power Drift = -0.184 dB

Peak SAR (extrapolated) = 0.677 W/kg

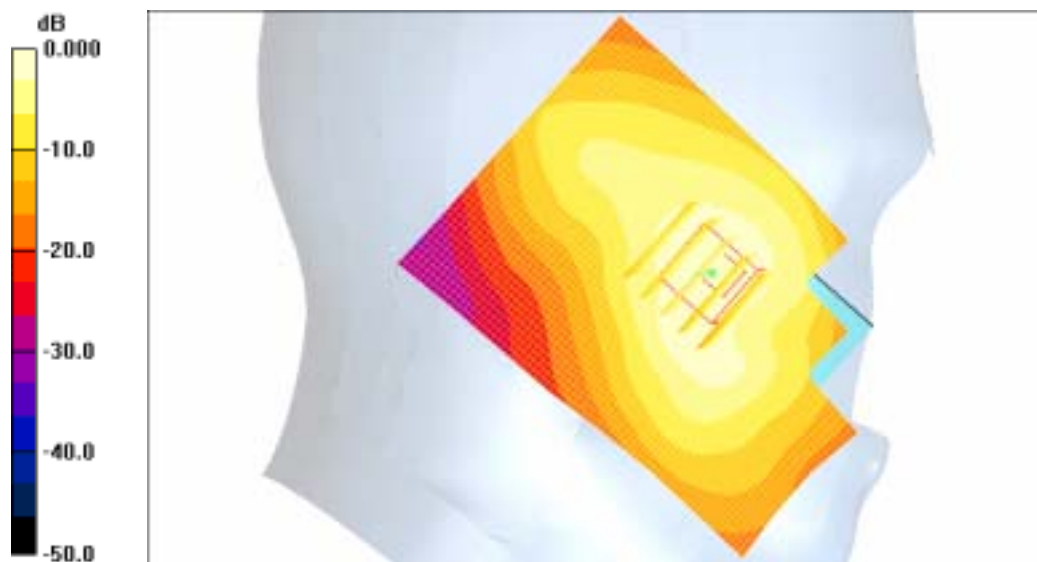
**SAR(1 g) = 0.470 mW/g**

Maximum value of SAR (measured) = 0.490 mW/g

**Cheek/Touch, Ch.512, Ant.Intenna, Bat.Standard/Area Scan (51x71x1):** Measurement

grid: dx=20mm, dy=20mm

Maximum value of SAR (interpolated) = 0.526 mW/g



0 dB = 0.526mW/g

SAMSUNG FCC ID : A3LSGHZ150 1900MHz GSM1900 Head SAR

DUT: SGH-Z150; Serial: FC-174-E

Program Name: SGH-Z150 GSM1900 Left (Job No. : FC-174)

Procedure Name: Ear/Tilt, Ch.661, Ant.Intenna, Bat.Standard

Procedure Notes: Meas. Ambient Temp-22.1, Tissue Temp(celsius)-21.2; Test Date-09/Jan/2006 [OET Bulletin 65-Supplement C, July 2001]

Communication System: GSM 1900; Frequency: 1880 MHz; Duty Cycle: 1:8.3

Medium parameters used:  $f = 1880$  MHz;  $\sigma = 1.43$  mho/m;  $\epsilon_r = 40.1$ ;  $\rho = 1000$  kg/m<sup>3</sup>

Phantom section: Left Section

DASY4 Configuration:

- Probe: ES3DV3 - SN3080; ConvF(4.92, 4.92, 4.92); Calibrated: 2005-05-26
- Sensor-Surface: 4mm (Mechanical Surface Detection)
- Electronics: DAE4 Sn533; Calibrated: 2005-11-21
- Phantom: PHANTOM #2; Type: SAM; Serial: TP-1141
- Measurement SW: DASY4, V4.6 Build 23; Postprocessing SW: SEMCAD, V1.8 Build 160

Ear/Tilt, Ch.661, Ant.Intenna, Bat.Standard/Area Scan (51x71x1): Measurement grid: dx=20mm, dy=20mm

Maximum value of SAR (interpolated) = 0.185 mW/g

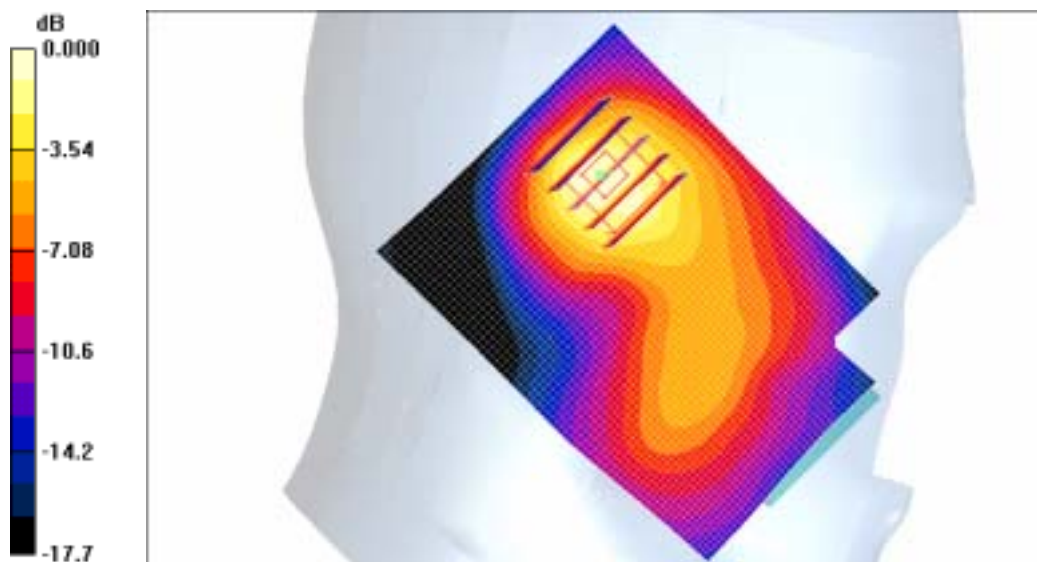
Ear/Tilt, Ch.661, Ant.Intenna, Bat.Standard/Zoom Scan (5x5x7)/Cube 0: Measurement grid: dx=8mm, dy=8mm, dz=5mm

Reference Value = 10.1 V/m; Power Drift = 0.114 dB

Peak SAR (extrapolated) = 0.265 W/kg

**SAR(1 g) = 0.171 mW/g**

Maximum value of SAR (measured) = 0.187 mW/g



0 dB = 0.187mW/g

SAMSUNG FCC ID : A3LSGHZ150 1900MHz GSM1900 Head SAR

DUT: SGH-Z150; Serial: FC-174-E

Program Name: SGH-Z150 GSM1900 Right (Job No. : FC-174)

Procedure Name: Cheek/Touch, Ch.512, Ant.Intenna, Bat.Standard With BT ON

Procedure Notes: Meas. Ambient Temp-22.1, Tissue Temp(celsius)-21.2; Test Date-09/Jan/2006 [OET Bulletin 65-Supplement C, July 2001]

Communication System: GSM 1900; Frequency: 1850.2 MHz; Duty Cycle: 1:8.3

Medium parameters used:  $f = 1850.2$  MHz;  $\sigma = 1.43$  mho/m;  $\epsilon_r = 40.1$ ;  $\rho = 1000$  kg/m<sup>3</sup>

Phantom section: Right Section

DASY4 Configuration:

- Probe: ES3DV3 - SN3080; ConvF(4.92, 4.92, 4.92); Calibrated: 2005-05-26
- Sensor-Surface: 4mm (Mechanical Surface Detection)
- Electronics: DAE4 Sn533; Calibrated: 2005-11-21
- Phantom: PHANTOM #2; Type: SAM; Serial: TP-1141
- Measurement SW: DASY4, V4.6 Build 23; Postprocessing SW: SEMCAD, V1.8 Build 160

**Cheek/Touch, Ch.512, Ant.Intenna, Bat.Standard With BT ON/Area Scan (51x71x1):**

Measurement grid: dx=20mm, dy=20mm

Maximum value of SAR (interpolated) = 0.665 mW/g

**Cheek/Touch, Ch.512, Ant.Intenna, Bat.Standard With BT ON/Zoom Scan (5x5x7)/Cube**

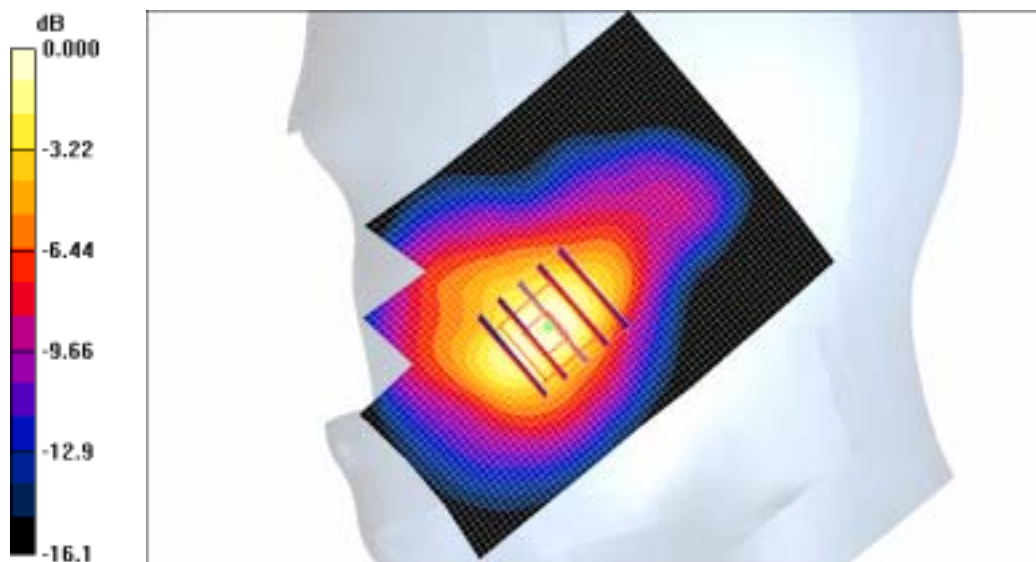
0: Measurement grid: dx=8mm, dy=8mm, dz=5mm

Reference Value = 5.02 V/m; Power Drift = -0.046 dB

Peak SAR (extrapolated) = 0.860 W/kg

**SAR(1 g) = 0.607 mW/g**

Maximum value of SAR (measured) = 0.653 mW/g



0 dB = 0.653mW/g

SAMSUNG FCC ID : A3LSGHZ150 1900MHz GSM1900 Body SAR

DUT: SGH-Z150; Serial: FC-174-E

Program Name: SGH-Z150 GSM1900 Body (Job No. : FC-174)

Procedure Name: Body, Ch.661, Ant.Intenna, Bat.Standard 2

Procedure Notes: Meas.Tissue Temp(celsius)-22.2, Ambient Temp-20.5;Test Date-09/Jan/2006[OET Bulletin 65-Supplement C, July 2001]

Communication System: Body GPRS ; Frequency: 1880 MHz;Duty Cycle: 1:4.15

Medium parameters used:  $f = 1880$  MHz;  $\sigma = 1.55$  mho/m;  $\epsilon_r = 52$ ;  $\rho = 1000$  kg/m<sup>3</sup>

Phantom section: Flat Section

DASY4 Configuration:

- Probe: ES3DV3 - SN3080; ConvF(4.42, 4.42, 4.42); Calibrated: 2005-05-26
- Sensor-Surface: 4mm (Mechanical Surface Detection)
- Electronics: DAE4 Sn533; Calibrated: 2005-11-21
- Phantom: PHANTOM #1; Type: SAM; Serial: TP-1143
- Measurement SW: DASY4, V4.6 Build 23; Postprocessing SW: SEMCAD, V1.8 Build 160

**Body, Ch.661, Ant.Intenna, Bat.Standard 2/Area Scan (51x71x1):** Measurement grid:

$dx=20$ mm,  $dy=20$ mm

Maximum value of SAR (interpolated) = 0.684 mW/g

**Body, Ch.661, Ant.Intenna, Bat.Standard 2/Zoom Scan (5x5x7)/Cube 0:** Measurement

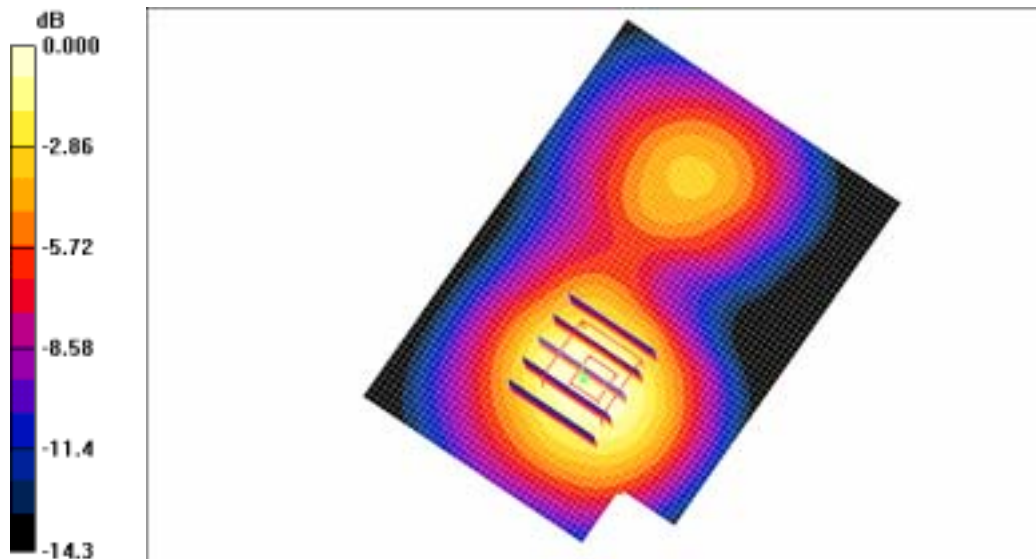
grid:  $dx=8$ mm,  $dy=8$ mm,  $dz=5$ mm

Reference Value = 12.8 V/m; Power Drift = -0.113 dB

Peak SAR (extrapolated) = 0.873 W/kg

**SAR(1 g) = 0.586 mW/g**

Maximum value of SAR (measured) = 0.641 mW/g



0 dB = 0.641mW/g

SAMSUNG FCC ID : A3LSGHZ150 1900MHz GSM1900 Body SAR

DUT: SGH-Z150; Serial: FC-174-E

Program Name: SGH-Z150 GSM1900 Body (Job No. : FC-174)

Procedure Name: Body, Ch.661, Ant.Intenna, Bat.Standard With BT On

Procedure Notes: Meas.Tissue Temp(celsius)-22.2, Ambient Temp-20.5;Test Date-09/Jan/2006[OET Bulletin 65-Supplement C, July 2001]

Communication System: Body GPRS ; Frequency: 1880 MHz;Duty Cycle: 1:4.15

Medium parameters used:  $f = 1880$  MHz;  $\sigma = 1.55$  mho/m;  $\epsilon_r = 52$ ;  $\rho = 1000$  kg/m<sup>3</sup>

Phantom section: Flat Section

DASY4 Configuration:

- Probe: ES3DV3 - SN3080; ConvF(4.42, 4.42, 4.42); Calibrated: 2005-05-26
- Sensor-Surface: 4mm (Mechanical Surface Detection)
- Electronics: DAE4 Sn533; Calibrated: 2005-11-21
- Phantom: PHANTOM #1; Type: SAM; Serial: TP-1143
- Measurement SW: DASY4, V4.6 Build 23; Postprocessing SW: SEMCAD, V1.8 Build 160

**Body, Ch.661, Ant.Intenna, Bat.Standard With BT On/Zoom Scan (5x5x7)/Cube 0:**

Measurement grid: dx=8mm, dy=8mm, dz=5mm

Reference Value = 12.5 V/m; Power Drift = 0.014 dB

Peak SAR (extrapolated) = 0.854 W/kg

**SAR(1 g) = 0.570 mW/g**

Maximum value of SAR (measured) = 0.620 mW/g

**Body, Ch.661, Ant.Intenna, Bat.Standard With BT On/Area Scan (51x71x1):**

Measurement grid: dx=20mm, dy=20mm

Maximum value of SAR (interpolated) = 0.669 mW/g



0 dB = 0.669mW/g

SAMSUNG FCC ID : A3LSGHZ150 1900MHz GSM1900 Head SAR

DUT: SGH-Z150; Serial: FC-174-E

Program Name: SGH-Z150 GSM1900 Right (Job No. : FC-174)

Procedure Name: Cheek/Touch, Ch.512, Ant.Intenna, Bat.Standard

Procedure Notes: Meas. Ambient Temp-22.1, Tissue Temp(celsius)-21.2; Test Date-09/Jan/2006 [OET Bulletin 65-Supplement C, July 2001]

Communication System: GSM 1900; Frequency: 1850.2 MHz; Duty Cycle: 1:8.3

Medium parameters used:  $f = 1850.2$  MHz;  $\sigma = 1.43$  mho/m;  $\epsilon_r = 40.1$ ;  $\rho = 1000$  kg/m<sup>3</sup>

Phantom section: Right Section

DASY4 Configuration:

- Probe: ES3DV3 - SN3080; ConvF(4.92, 4.92, 4.92); Calibrated: 2005-05-26
- Sensor-Surface: 4mm (Mechanical Surface Detection)
- Electronics: DAE4 Sn533; Calibrated: 2005-11-21
- Phantom: PHANTOM #2; Type: SAM; Serial: TP-1141
- Measurement SW: DASY4, V4.6 Build 23; Postprocessing SW: SEMCAD, V1.8 Build 160

**Cheek/Touch, Ch.512, Ant.Intenna, Bat.Standard/Area Scan (51x71x1):** Measurement grid: dx=20mm, dy=20mm

Maximum value of SAR (interpolated) = 0.674 mW/g

**Cheek/Touch, Ch.512, Ant.Intenna, Bat.Standard/Zoom Scan (5x5x7)/Cube 0:**

Measurement grid: dx=8mm, dy=8mm, dz=5mm

Reference Value = 5.14 V/m; Power Drift = 0.005 dB

Peak SAR (extrapolated) = 0.890 W/kg

**SAR(1 g) = 0.620 mW/g**

Maximum value of SAR (measured) = 0.667 mW/g



SAMSUNG FCC ID : A3LSGHZ150 1900MHz GSM1900 Head SAR

DUT: SGH-Z150; Serial: FC-174-E

Program Name: SGH-Z150 GSM1900 Right (Job No. : FC-174)

Procedure Name: Cheek/Touch, Ch.512, Ant.Intenna, Bat.Standard With BT ON

Procedure Notes: Meas. Ambient Temp-22.1, Tissue Temp(celsius)-21.2; Test Date-09/Jan/2006 [OET Bulletin 65-Supplement C, July 2001]

Communication System: GSM 1900; Frequency: 1850.2 MHz; Duty Cycle: 1:8.3

Medium parameters used:  $f = 1850.2$  MHz;  $\sigma = 1.43$  mho/m;  $\epsilon_r = 40.1$ ;  $\rho = 1000$  kg/m<sup>3</sup>

Phantom section: Right Section

DASY4 Configuration:

- Probe: ES3DV3 - SN3080; ConvF(4.92, 4.92, 4.92); Calibrated: 2005-05-26
- Sensor-Surface: 4mm (Mechanical Surface Detection)
- Electronics: DAE4 Sn533; Calibrated: 2005-11-21
- Phantom: PHANTOM #2; Type: SAM; Serial: TP-1141
- Measurement SW: DASY4, V4.6 Build 23; Postprocessing SW: SEMCAD, V1.8 Build 160

**Cheek/Touch, Ch.512, Ant.Intenna, Bat.Standard With BT ON/Area Scan (51x71x1):**

Measurement grid: dx=20mm, dy=20mm

Maximum value of SAR (interpolated) = 0.665 mW/g

**Cheek/Touch, Ch.512, Ant.Intenna, Bat.Standard With BT ON/Zoom Scan (5x5x7)/Cube**

**0:** Measurement grid: dx=8mm, dy=8mm, dz=5mm

Reference Value = 5.02 V/m; Power Drift = -0.046 dB

Peak SAR (extrapolated) = 0.860 W/kg

**SAR(1 g) = 0.607 mW/g**

Maximum value of SAR (measured) = 0.653 mW/g



SAMSUNG FCC ID : A3LSGHZ150 1900MHz GSM1900 Body SAR

DUT: SGH-Z150; Serial: FC-174-E

Program Name: SGH-Z150 GSM1900 Body (Job No. : FC-174)

Procedure Name: Body, Ch.661, Ant.Intenna, Bat.Standard

Procedure Notes: Meas.Tissue Temp(celsius)-22.2, Ambient Temp-20.5; Test Date-09/Jan/2006 [OET Bulletin 65-Supplement C, July 2001]

Communication System: Body GPRS ; Frequency: 1880 MHz; Duty Cycle: 1:4.15

Medium parameters used:  $f = 1880$  MHz;  $\sigma = 1.55$  mho/m;  $\epsilon_r = 52$ ;  $\rho = 1000$  kg/m<sup>3</sup>

Phantom section: Flat Section

DASY4 Configuration:

- Probe: ES3DV3 - SN3080; ConvF(4.42, 4.42, 4.42); Calibrated: 2005-05-26
- Sensor-Surface: 4mm (Mechanical Surface Detection)
- Electronics: DAE4 Sn533; Calibrated: 2005-11-21
- Phantom: PHANTOM #1; Type: SAM; Serial: TP-1143
- Measurement SW: DASY4, V4.6 Build 23; Postprocessing SW: SEMCAD, V1.8 Build 160

**Body, Ch.661, Ant.Intenna, Bat.Standard/Area Scan (51x71x1):** Measurement grid:

dx=20mm, dy=20mm

Maximum value of SAR (interpolated) = 0.684 mW/g

**Body, Ch.661, Ant.Intenna, Bat.Standard/Zoom Scan (5x5x7)/Cube 0:** Measurement grid:

dx=8mm, dy=8mm, dz=5mm

Reference Value = 12.8 V/m; Power Drift = -0.113 dB

Peak SAR (extrapolated) = 0.873 W/kg

**SAR(1 g) = 0.586 mW/g**

Maximum value of SAR (measured) = 0.641 mW/g



SAMSUNG FCC ID : A3LSGHZ150 1900MHz GSM1900 Body SAR

DUT: SGH-Z150; Serial: FC-174-E

Program Name: SGH-Z150 GSM1900 Body (Job No. : FC-174)

Procedure Name: Body, Ch.661, Ant.Intenna, Bat.Standard With BT On

Procedure Notes: Meas.Tissue Temp(celsius)-22.2, Ambient Temp-20.5;Test Date-09/Jan/2006[OET Bulletin 65-Supplement C, July 2001]

Communication System: Body GPRS ; Frequency: 1880 MHz;Duty Cycle: 1:4.15

Medium parameters used:  $f = 1880$  MHz;  $\sigma = 1.55$  mho/m;  $\epsilon_r = 52$ ;  $\rho = 1000$  kg/m<sup>3</sup>

Phantom section: Flat Section

DASY4 Configuration:

- Probe: ES3DV3 - SN3080; ConvF(4.42, 4.42, 4.42); Calibrated: 2005-05-26
- Sensor-Surface: 4mm (Mechanical Surface Detection)
- Electronics: DAE4 Sn533; Calibrated: 2005-11-21
- Phantom: PHANTOM #1; Type: SAM; Serial: TP-1143
- Measurement SW: DASY4, V4.6 Build 23; Postprocessing SW: SEMCAD, V1.8 Build 160

**Body, Ch.661, Ant.Intenna, Bat.Standard With BT On/Zoom Scan (5x5x7)/Cube 0:**

Measurement grid: dx=8mm, dy=8mm, dz=5mm

Reference Value = 12.5 V/m; Power Drift = 0.014 dB

Peak SAR (extrapolated) = 0.854 W/kg

**SAR(1 g) = 0.570 mW/g**

Maximum value of SAR (measured) = 0.620 mW/g

**Body, Ch.661, Ant.Intenna, Bat.Standard With BT On/Area Scan (51x71x1):**

Measurement grid: dx=20mm, dy=20mm

Maximum value of SAR (interpolated) = 0.669 mW/g

