

**SAMSUNG FCC ID : A3LSCHZ140V -- 1900MHz GSM1900 Head SAR**

**DUT: SGH-Z140V; Serial: FC-034-B**

**Program Name: SGH-Z140V GSM1900 Right (Job No. : FC-034)**

**Procedure Name: Cheek/Touch, Ch.512, Ant.Fixed, Bat.Standard**

**Procedure Notes: Meas.Tissue Temp(celsius)-21.6;Test Date-01/Apr/2005[OET Bulletin 65-Supplement C, July 2001]**

Communication System: GSM 1900; Frequency: 1850.2 MHz;Duty Cycle: 1:8.3  
Medium parameters used:  $f = 1850.2$  MHz;  $\sigma = 1.43$  mho/m;  $\epsilon_r = 38.8$ ;  $\rho = 1000$  kg/m<sup>3</sup>  
Phantom section: Right Section

DASY4 Configuration:

- Probe: ES3DV2 - SN3017; ConvF(5.11, 5.11, 5.11); Calibrated: 2004-09-24
- Sensor-Surface: 4mm (Mechanical Surface Detection)
- Electronics: DAE3 Sn533; Calibrated: 2004-12-03
- Phantom: SAM 1800/1900 MHz; Type: SAM; Serial: TP-1143
- Measurement SW: DASY4, V4.5 Build 19; Postprocessing SW: SEMCAD, V1.8 Build 146

**Cheek/Touch, Ch.512, Ant.Fixed, Bat.Standard/Area Scan (51x71x1):** Measurement grid:

dx=20mm, dy=20mm

Maximum value of SAR (interpolated) = 0.537 mW/g

**Cheek/Touch, Ch.512, Ant.Fixed, Bat.Standard/Zoom Scan (5x5x7)/Cube 0:** Measurement grid:

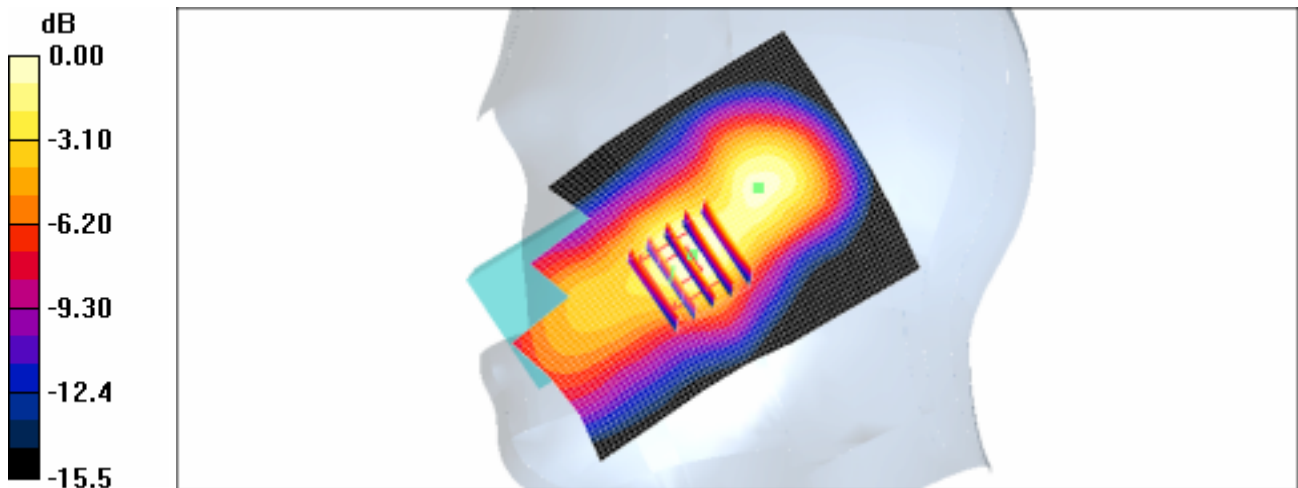
dx=8mm, dy=8mm, dz=5mm

Reference Value = 7.86 V/m; Power Drift = -0.095 dB

Peak SAR (extrapolated) = 0.753 W/kg

**SAR(1 g) = 0.475 mW/g;**

Maximum value of SAR (measured) = 0.499 mW/g



0 dB = 0.499mW/g

**SAMSUNG FCC ID : A3LSCHZ140V -- 1900MHz GSM1900 Head SAR**

**DUT: SGH-Z140V; Serial: FC-034-B**

**Program Name: SGH-Z140V GSM1900 Right (Job No. : FC-034)**

**Procedure Name: Ear/Tilt, Ch.661, Ant.Fixed, Bat.Standard**

**Procedure Notes: Meas.Tissue Temp(celsius)-21.6;Test Date-01/Apr/2005[OET Bulletin 65-Supplement C, July 2001]**

Communication System: GSM 1900; Frequency: 1880 MHz;Duty Cycle: 1:8.3  
Medium parameters used:  $f = 1880$  MHz;  $\sigma = 1.43$  mho/m;  $\epsilon_r = 38.8$ ;  $\rho = 1000$  kg/m<sup>3</sup>  
Phantom section: Right Section

DASY4 Configuration:

- Probe: ES3DV2 - SN3017; ConvF(5.11, 5.11, 5.11); Calibrated: 2004-09-24
- Sensor-Surface: 4mm (Mechanical Surface Detection)
- Electronics: DAE3 Sn533; Calibrated: 2004-12-03
- Phantom: SAM 1800/1900 MHz; Type: SAM; Serial: TP-1143
- Measurement SW: DASY4, V4.5 Build 19; Postprocessing SW: SEMCAD, V1.8 Build 146

**Ear/Tilt, Ch.661, Ant.Fixed, Bat.Standard/Area Scan (51x71x1):** Measurement grid: dx=20mm, dy=20mm

Maximum value of SAR (interpolated) = 0.222 mW/g

**Ear/Tilt, Ch.661, Ant.Fixed, Bat.Standard/Zoom Scan (5x5x7)/Cube 0:** Measurement grid:

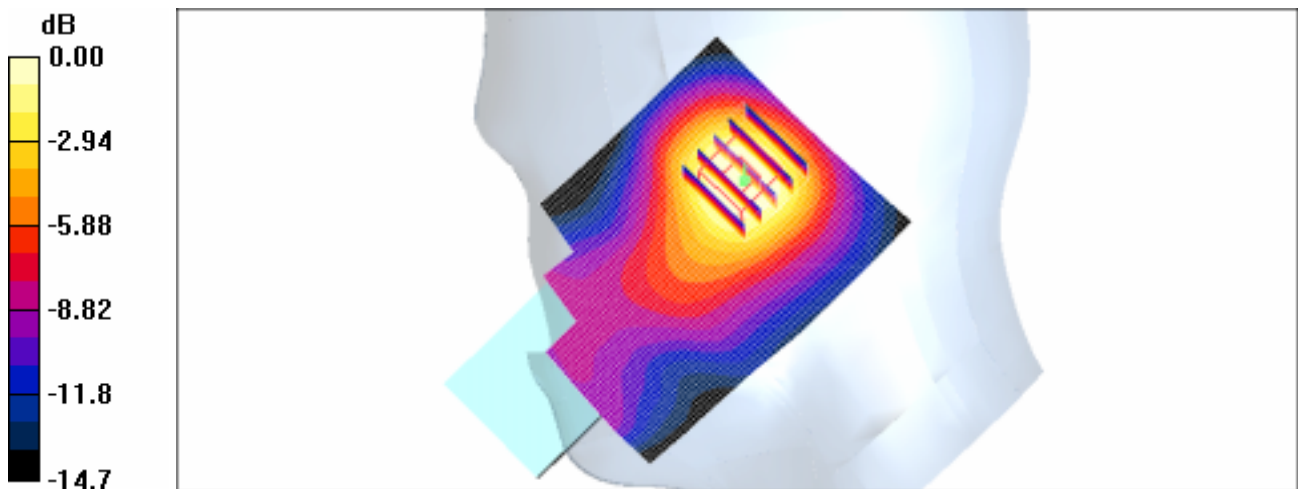
dx=8mm, dy=8mm, dz=5mm

Reference Value = 8.23 V/m; Power Drift = 0.01 dB

Peak SAR (extrapolated) = 0.239 W/kg

**SAR(1 g) = 0.167 mW/g;**

Maximum value of SAR (measured) = 0.177 mW/g



0 dB = 0.177mW/g

**SAMSUNG FCC ID : A3LSCHZ140V -- 1900MHz GSM1900 Head SAR**

**DUT: SGH-Z140V; Serial: FC-034-B**

**Program Name: SGH-Z140V GSM1900 Left (Job No. : FC-034)**

**Procedure Name: Cheek/Touch, Ch.512, Ant.Fixed, Bat.Standard**

**Procedure Notes: Meas.Tissue Temp(celsius)-21.6;Test Date-01/Apr/2005[OET Bulletin 65-Supplement C, July 2001]**

Communication System: GSM 1900; Frequency: 1850.2 MHz;Duty Cycle: 1:8.3  
Medium parameters used:  $f = 1850.2$  MHz;  $\sigma = 1.43$  mho/m;  $\epsilon_r = 38.8$ ;  $\rho = 1000$  kg/m<sup>3</sup>  
Phantom section: Left Section

DASY4 Configuration:

- Probe: ES3DV2 - SN3017; ConvF(5.11, 5.11, 5.11); Calibrated: 2004-09-24
- Sensor-Surface: 4mm (Mechanical Surface Detection)
- Electronics: DAE3 Sn533; Calibrated: 2004-12-03
- Phantom: SAM 1800/1900 MHz; Type: SAM; Serial: TP-1143
- Measurement SW: DASY4, V4.5 Build 19; Postprocessing SW: SEMCAD, V1.8 Build 146

**Cheek/Touch, Ch.512, Ant.Fixed, Bat.Standard/Area Scan (51x71x1):** Measurement grid:

dx=20mm, dy=20mm

Maximum value of SAR (interpolated) = 0.524 mW/g

**Cheek/Touch, Ch.512, Ant.Fixed, Bat.Standard/Zoom Scan (5x5x7)/Cube 0:** Measurement grid:

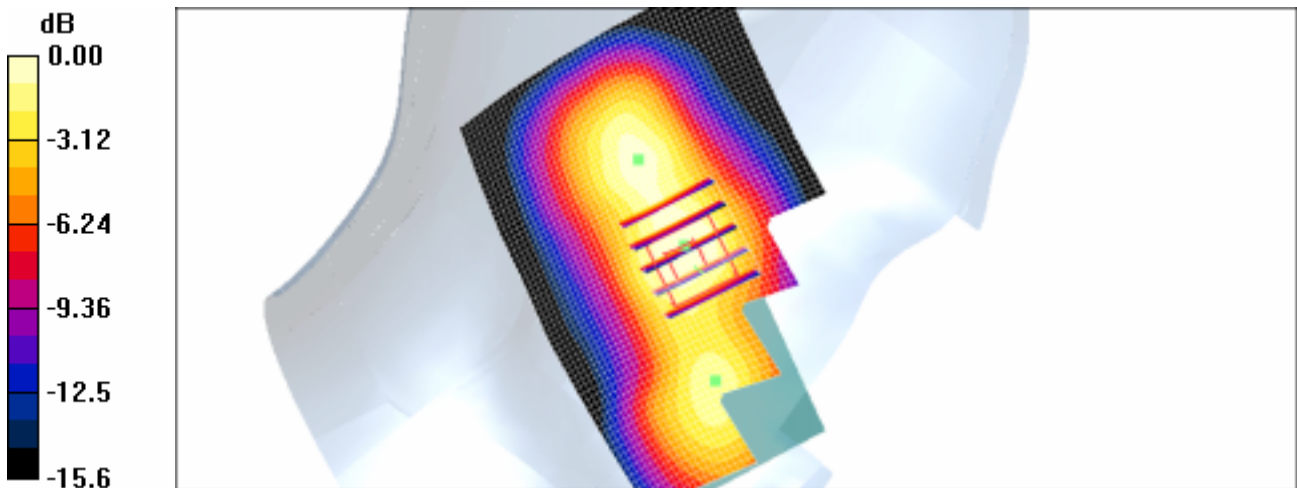
dx=8mm, dy=8mm, dz=5mm

Reference Value = 6.99 V/m; Power Drift = 0.01 dB

Peak SAR (extrapolated) = 0.739 W/kg

**SAR(1 g) = 0.473 mW/g;**

Maximum value of SAR (measured) = 0.487 mW/g



0 dB = 0.487mW/g

**SAMSUNG FCC ID : A3LSCHZ140V -- 1900MHz GSM1900 Head SAR**

**DUT: SGH-Z140V; Serial: FC-034-B**

**Program Name: SGH-Z140V GSM1900 Left (Job No. : FC-034)**

**Procedure Name: Ear/Tilt, Ch.661, Ant.Fixed, Bat.Standard**

**Procedure Notes: Meas.Tissue Temp(celsius)-21.6;Test Date-01/Apr/2005[OET Bulletin 65-Supplement C, July 2001]**

Communication System: GSM 1900; Frequency: 1880 MHz;Duty Cycle: 1:8.3  
Medium parameters used:  $f = 1880$  MHz;  $\sigma = 1.43$  mho/m;  $\epsilon_r = 38.8$ ;  $\rho = 1000$  kg/m<sup>3</sup>  
Phantom section: Left Section

DASY4 Configuration:

- Probe: ES3DV2 - SN3017; ConvF(5.11, 5.11, 5.11); Calibrated: 2004-09-24
- Sensor-Surface: 4mm (Mechanical Surface Detection)
- Electronics: DAE3 Sn533; Calibrated: 2004-12-03
- Phantom: SAM 1800/1900 MHz; Type: SAM; Serial: TP-1143
- Measurement SW: DASY4, V4.5 Build 19; Postprocessing SW: SEMCAD, V1.8 Build 146

**Ear/Tilt, Ch.661, Ant.Fixed, Bat.Standard/Area Scan (51x71x1):** Measurement grid: dx=20mm, dy=20mm

Maximum value of SAR (interpolated) = 0.252 mW/g

**Ear/Tilt, Ch.661, Ant.Fixed, Bat.Standard/Zoom Scan (5x5x7)/Cube 0:** Measurement grid:

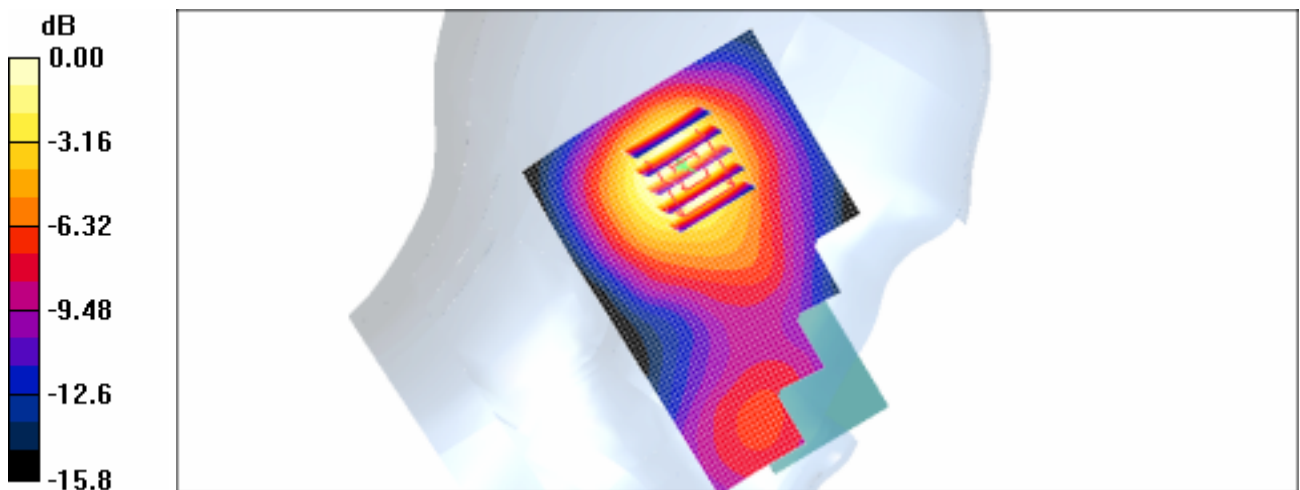
dx=8mm, dy=8mm, dz=5mm

Reference Value = 7.53 V/m; Power Drift = 0.129 dB

Peak SAR (extrapolated) = 0.281 W/kg

**SAR(1 g) = 0.198 mW/g;**

Maximum value of SAR (measured) = 0.209 mW/g



0 dB = 0.209mW/g

**SAMSUNG FCC ID : A3LSCHZ140V -- 1900MHz GSM1900 Head SAR**

**DUT: SGH-Z140V; Serial: FC-034-B**

**Program Name: SGH-Z140V GSM1900 Right (Job No. : FC-034)**

**Procedure Name: Cheek/Touch, Ch.512, Ant.Fixed, Bat.Standard With BT ON**

**Procedure Notes: Meas.Tissue Temp(celsius)-21.6;Test Date-01/Apr/2005[OET Bulletin 65-Supplement C, July 2001]**

Communication System: GSM 1900; Frequency: 1850.2 MHz;Duty Cycle: 1:8.3  
Medium parameters used:  $f = 1850.2$  MHz;  $\sigma = 1.43$  mho/m;  $\epsilon_r = 38.8$ ;  $\rho = 1000$  kg/m<sup>3</sup>  
Phantom section: Right Section

DASY4 Configuration:

- Probe: ES3DV2 - SN3017; ConvF(5.11, 5.11, 5.11); Calibrated: 2004-09-24
- Sensor-Surface: 4mm (Mechanical Surface Detection)
- Electronics: DAE3 Sn533; Calibrated: 2004-12-03
- Phantom: SAM 1800/1900 MHz; Type: SAM; Serial: TP-1143
- Measurement SW: DASY4, V4.5 Build 19; Postprocessing SW: SEMCAD, V1.8 Build 146

**Cheek/Touch, Ch.512, Ant.Fixed, Bat.Standard With BT ON/Area Scan (51x71x1):**

Measurement grid: dx=20mm, dy=20mm

Maximum value of SAR (interpolated) = 0.566 mW/g

**Cheek/Touch, Ch.512, Ant.Fixed, Bat.Standard With BT ON/Zoom Scan (5x5x7)/Cube 0:**

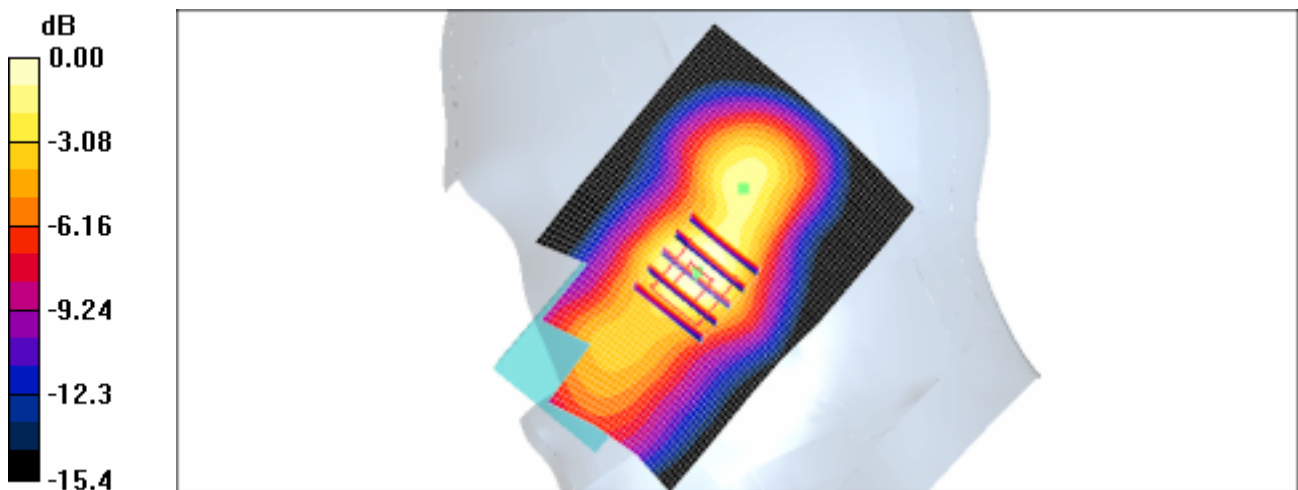
Measurement grid: dx=8mm, dy=8mm, dz=5mm

Reference Value = 7.59 V/m; Power Drift = -0.134 dB

Peak SAR (extrapolated) = 0.795 W/kg

**SAR(1 g) = 0.493 mW/g;**

Maximum value of SAR (measured) = 0.520 mW/g



0 dB = 0.520mW/g

**SAMSUNG FCC ID : A3LSCHZ140V -- 1900MHz GPRS1900 Body SAR**

**DUT: SGH-Z140V; Serial: FC-034-B**

**Program Name: SGH-Z140V GPRS1900 Body (Job No. : FC-034)**

**Procedure Name: Body, Ch. 661, Ant. Fixed, Bat. Standard**

**Procedure Notes: Meas.Tissue Temp(celsius)-21.5;Test Date-01/Apr/2005[OET Bulletin 65-Supplement C, July 2001]**

Communication System: GSM1900 GPRS; Frequency: 1880 MHz;Duty Cycle: 1:4.15  
Medium parameters used:  $f = 1880$  MHz;  $\sigma = 1.52$  mho/m;  $\epsilon_r = 51.6$ ;  $\rho = 1000$  kg/m<sup>3</sup>  
Phantom section: Flat Section

DASY4 Configuration:

- Probe: ES3DV2 - SN3017; ConvF(4.46, 4.46, 4.46); Calibrated: 2004-09-24
- Sensor-Surface: 4mm (Mechanical Surface Detection)
- Electronics: DAE3 Sn533; Calibrated: 2004-12-03
- Phantom: SAM 1800/1900 MHz; Type: SAM; Serial: TP-1143
- Measurement SW: DASY4, V4.5 Build 19; Postprocessing SW: SEMCAD, V1.8 Build 146

**Body, Ch. 661, Ant. Fixed, Bat. Standard/Area Scan (51x71x1):** Measurement grid: dx=20mm, dy=20mm

Maximum value of SAR (interpolated) = 0.497 mW/g

**Body, Ch. 661, Ant. Fixed, Bat. Standard/Zoom Scan (5x5x7)/Cube 0:** Measurement grid:

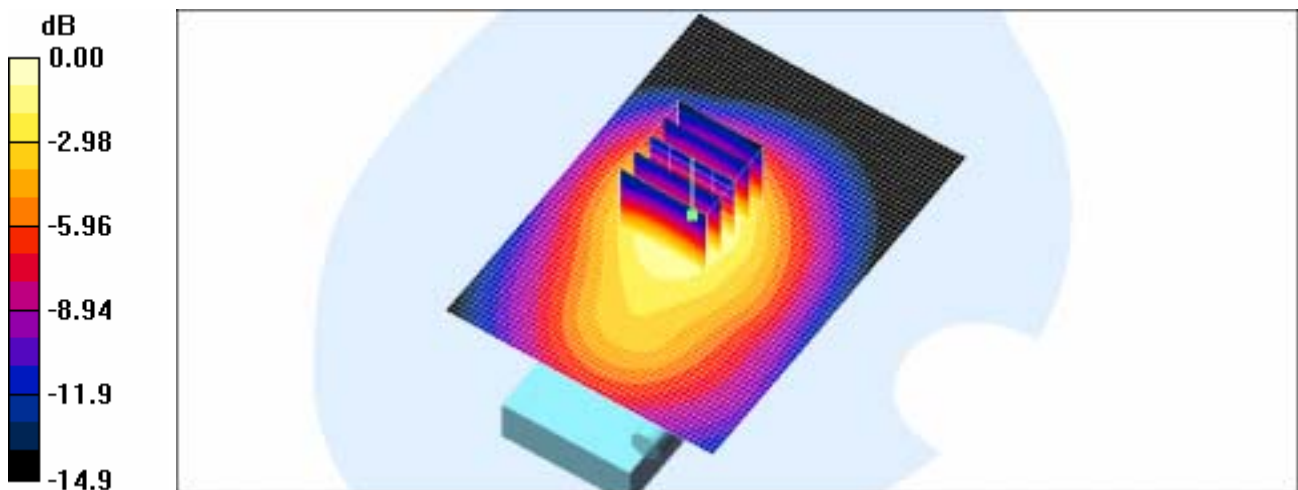
dx=8mm, dy=8mm, dz=5mm

Reference Value = 16.5 V/m; Power Drift = -0.060 dB

Peak SAR (extrapolated) = 0.649 W/kg

**SAR(1 g) = 0.431 mW/g;**

Maximum value of SAR (measured) = 0.461 mW/g



0 dB = 0.461mW/g

## SAMSUNG FCC ID : A3LSCHZ140V -- 1900MHz GPRS1900 Body SAR

DUT: SGH-Z140V; Serial: FC-034-B

Program Name: SGH-Z140V GPRS1900 Body (Job No. : FC-034)

Procedure Name: Body, Ch. 661, Ant. Fixed, Bat. Standard With BT ON

Procedure Notes: Meas.Tissue Temp(celsius)-21.5;Test Date-01/Apr/2005[OET Bulletin 65-Supplement C, July 2001]

Communication System: GSM1900 GPRS; Frequency: 1880 MHz;Duty Cycle: 1:4.15  
Medium parameters used:  $f = 1880$  MHz;  $\sigma = 1.52$  mho/m;  $\epsilon_r = 51.6$ ;  $\rho = 1000$  kg/m<sup>3</sup>  
Phantom section: Flat Section

DASY4 Configuration:

- Probe: ES3DV2 - SN3017; ConvF(4.46, 4.46, 4.46); Calibrated: 2004-09-24
- Sensor-Surface: 4mm (Mechanical Surface Detection)
- Electronics: DAE3 Sn533; Calibrated: 2004-12-03
- Phantom: SAM 1800/1900 MHz; Type: SAM; Serial: TP-1143
- Measurement SW: DASY4, V4.5 Build 19; Postprocessing SW: SEMCAD, V1.8 Build 146

**Body, Ch. 661, Ant. Fixed, Bat. Standard With BT ON/Area Scan (51x71x1):** Measurement grid: dx=20mm, dy=20mm

Maximum value of SAR (interpolated) = 0.499 mW/g

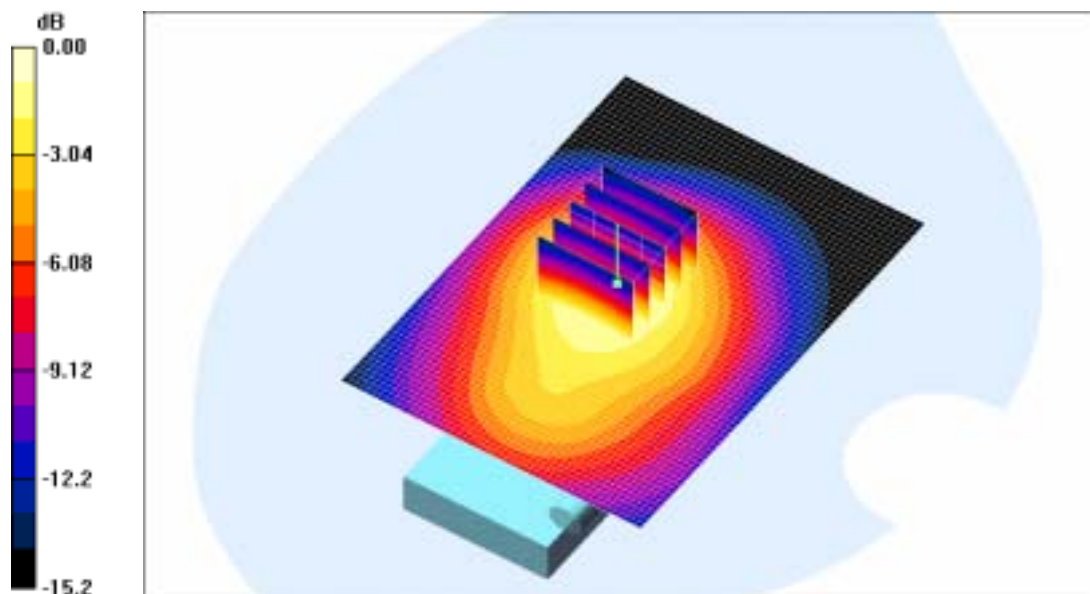
**Body, Ch. 661, Ant. Fixed, Bat. Standard With BT ON/Zoom Scan (5x5x7)/Cube 0:** Measurement grid: dx=8mm, dy=8mm, dz=5mm

Reference Value = 16.5 V/m; Power Drift = -0.028 dB

Peak SAR (extrapolated) = 0.627 W/kg

**SAR(1 g) = 0.424 mW/g**

Maximum value of SAR (measured) = 0.456 mW/g



0 dB = 0.456mW/g

**SAMSUNG FCC ID : A3LSCHZ140V -- 1900MHz GSM1900 Head SAR**

**DUT: SGH-Z140V; Serial: FC-034-B**

**Program Name: SGH-Z140V GSM1900 Right (Job No. : FC-034)**

**Procedure Name: Cheek/Touch, Ch.512, Ant.Fixed, Bat.Standard**

**Procedure Notes: Meas.Tissue Temp(celsius)-21.6;Test Date-01/Apr/2005[OET Bulletin 65-Supplement C, July 2001]**

Communication System: GSM 1900; Frequency: 1850.2 MHz;Duty Cycle: 1:8.3  
Medium parameters used:  $f = 1850.2$  MHz;  $\sigma = 1.43$  mho/m;  $\epsilon_r = 38.8$ ;  $\rho = 1000$  kg/m<sup>3</sup>  
Phantom section: Right Section

DASY4 Configuration:

- Probe: ES3DV2 - SN3017; ConvF(5.11, 5.11, 5.11); Calibrated: 2004-09-24
- Sensor-Surface: 4mm (Mechanical Surface Detection)
- Electronics: DAE3 Sn533; Calibrated: 2004-12-03
- Phantom: SAM 1800/1900 MHz; Type: SAM; Serial: TP-1143
- Measurement SW: DASY4, V4.5 Build 19; Postprocessing SW: SEMCAD, V1.8 Build 146

**Cheek/Touch, Ch.512, Ant.Fixed, Bat.Standard/Area Scan (51x71x1):** Measurement grid:

dx=20mm, dy=20mm

Maximum value of SAR (interpolated) = 0.537 mW/g

**Cheek/Touch, Ch.512, Ant.Fixed, Bat.Standard/Zoom Scan (5x5x7)/Cube 0:** Measurement grid:

dx=8mm, dy=8mm, dz=5mm

Reference Value = 7.86 V/m; Power Drift = -0.095 dB

Peak SAR (extrapolated) = 0.753 W/kg

**SAR(1 g) = 0.475 mW/g**

Maximum value of SAR (measured) = 0.499 mW/g



**SAMSUNG FCC ID : A3LSCHZ140V -- 1900MHz GSM1900 Head SAR**

**DUT: SGH-Z140V; Serial: FC-034-B**

**Program Name: SGH-Z140V GSM1900 Right (Job No. : FC-034)**

**Procedure Name: Cheek/Touch, Ch.512, Ant.Fixed, Bat.Standard With BT ON**

**Procedure Notes: Meas.Tissue Temp(celsius)-21.6;Test Date-01/Apr/2005[OET Bulletin 65-Supplement C, July 2001]**

Communication System: GSM 1900; Frequency: 1850.2 MHz;Duty Cycle: 1:8.3  
Medium parameters used:  $f = 1850.2$  MHz;  $\sigma = 1.43$  mho/m;  $\epsilon_r = 38.8$ ;  $\rho = 1000$  kg/m<sup>3</sup>  
Phantom section: Right Section

DASY4 Configuration:

- Probe: ES3DV2 - SN3017; ConvF(5.11, 5.11, 5.11); Calibrated: 2004-09-24
- Sensor-Surface: 4mm (Mechanical Surface Detection)
- Electronics: DAE3 Sn533; Calibrated: 2004-12-03
- Phantom: SAM 1800/1900 MHz; Type: SAM; Serial: TP-1143
- Measurement SW: DASY4, V4.5 Build 19; Postprocessing SW: SEMCAD, V1.8 Build 146

**Cheek/Touch, Ch.512, Ant.Fixed, Bat.Standard With BT ON/Area Scan (51x71x1):**

Measurement grid: dx=20mm, dy=20mm

Maximum value of SAR (interpolated) = 0.566 mW/g

**Cheek/Touch, Ch.512, Ant.Fixed, Bat.Standard With BT ON/Zoom Scan (5x5x7)/Cube 0:**

Measurement grid: dx=8mm, dy=8mm, dz=5mm

Reference Value = 7.59 V/m; Power Drift = -0.134 dB

Peak SAR (extrapolated) = 0.795 W/kg

**SAR(1 g) = 0.493 mW/g**

Maximum value of SAR (measured) = 0.520 mW/g



**SAMSUNG FCC ID : A3LSCHZ140V -- 1900MHz GPRS1900 Body SAR**

**DUT: SGH-Z140V; Serial: FC-034-B**

**Program Name: SGH-Z140V GPRS1900 Body (Job No. : FC-034)**

**Procedure Name: Body, Ch. 661, Ant. Fixed, Bat. Standard**

**Procedure Notes: Meas.Tissue Temp(celsius)-21.5;Test Date-01/Apr/2005[OET Bulletin 65-Supplement C, July 2001]**

Communication System: GSM1900 GPRS; Frequency: 1880 MHz;Duty Cycle: 1:4.15  
Medium parameters used:  $f = 1880$  MHz;  $\sigma = 1.52$  mho/m;  $\epsilon_r = 51.6$ ;  $\rho = 1000$  kg/m<sup>3</sup>  
Phantom section: Flat Section

DASY4 Configuration:

- Probe: ES3DV2 - SN3017; ConvF(4.46, 4.46, 4.46); Calibrated: 2004-09-24
- Sensor-Surface: 4mm (Mechanical Surface Detection)
- Electronics: DAE3 Sn533; Calibrated: 2004-12-03
- Phantom: SAM 1800/1900 MHz; Type: SAM; Serial: TP-1143
- Measurement SW: DASY4, V4.5 Build 19; Postprocessing SW: SEMCAD, V1.8 Build 146

**Body, Ch. 661, Ant. Fixed, Bat. Standard/Area Scan (51x71x1):** Measurement grid: dx=20mm, dy=20mm

Maximum value of SAR (interpolated) = 0.497 mW/g

**Body, Ch. 661, Ant. Fixed, Bat. Standard/Zoom Scan (5x5x7)/Cube 0:** Measurement grid:

dx=8mm, dy=8mm, dz=5mm

Reference Value = 16.5 V/m; Power Drift = -0.060 dB

Peak SAR (extrapolated) = 0.649 W/kg

**SAR(1 g) = 0.431 mW/g**

Maximum value of SAR (measured) = 0.461 mW/g



## SAMSUNG FCC ID : A3LSCHZ140V -- 1900MHz GPRS1900 Body SAR

DUT: SGH-Z140V; Serial: FC-034-B

Program Name: SGH-Z140V GPRS1900 Body (Job No. : FC-034)

Procedure Name: Body, Ch. 661, Ant. Fixed, Bat. Standard With BT ON

Procedure Notes: Meas.Tissue Temp(celsius)-21.5;Test Date-01/Apr/2005[OET Bulletin 65-Supplement C, July 2001]

Communication System: GSM1900 GPRS; Frequency: 1880 MHz;Duty Cycle: 1:4.15  
Medium parameters used:  $f = 1880$  MHz;  $\sigma = 1.52$  mho/m;  $\epsilon_r = 51.6$ ;  $\rho = 1000$  kg/m<sup>3</sup>  
Phantom section: Flat Section

DASY4 Configuration:

- Probe: ES3DV2 - SN3017; ConvF(4.46, 4.46, 4.46); Calibrated: 2004-09-24
- Sensor-Surface: 4mm (Mechanical Surface Detection)
- Electronics: DAE3 Sn533; Calibrated: 2004-12-03
- Phantom: SAM 1800/1900 MHz; Type: SAM; Serial: TP-1143
- Measurement SW: DASY4, V4.5 Build 19; Postprocessing SW: SEMCAD, V1.8 Build 146

**Body, Ch. 661, Ant. Fixed, Bat. Standard With BT ON/Area Scan (51x71x1):** Measurement grid: dx=20mm, dy=20mm  
Maximum value of SAR (interpolated) = 0.499 mW/g

**Body, Ch. 661, Ant. Fixed, Bat. Standard With BT ON/Zoom Scan (5x5x7)/Cube 0:** Measurement grid: dx=8mm, dy=8mm, dz=5mm  
Reference Value = 16.5 V/m; Power Drift = -0.028 dB  
Peak SAR (extrapolated) = 0.627 W/kg  
**SAR(1 g) = 0.424 mW/g**  
Maximum value of SAR (measured) = 0.456 mW/g

