

SAMSUNG FCC ID : A3LSGHX700 1900MHz GSM1900 Head SAR

DUT: SGH-X700; Serial: FC-107-A

Program Name: SGH-X700 GSM1900 Right (Job No. : FC-107)

Procedure Name: Cheek/Touch, Ch.810, Ant.Intenna, Bat.Standard

Procedure Notes: Meas.Tissue Temp(celsius)-21.6; Test Date-12/Aug/2005 [OET Bulletin 65-Supplement C, July 2001]

Communication System: GSM 1900; Frequency: 1909.8 MHz;Duty Cycle: 1:8.3

Medium parameters used: $f = 1909.8$ MHz; $\sigma = 1.38$ mho/m; $\epsilon_r = 39$; $\rho = 1000$ kg/m³

Phantom section: Right Section

DASY4 Configuration:

- Probe: EX3DV4 - SN3537; ConvF(8.29, 8.29, 8.29); Calibrated: 2004-12-15

- Sensor-Surface: 4mm (Mechanical Surface Detection)

- Electronics: DAE3 Sn533; Calibrated: 2004-12-03

- Phantom: SAM 1800/1900 MHz; Type: SAM; Serial: TP-1248

- Measurement SW: DASY4, V4.5 Build 19; Postprocessing SW: SEMCAD, V1.8 Build 146

Cheek/Touch, Ch.810, Ant.Intenna, Bat.Standard/Area Scan (51x71x1): Measurement grid: dx=20mm, dy=20mm

Maximum value of SAR (interpolated) = 0.441 mW/g

Cheek/Touch, Ch.810, Ant.Intenna, Bat.Standard/Zoom Scan (5x5x7)/Cube 0:

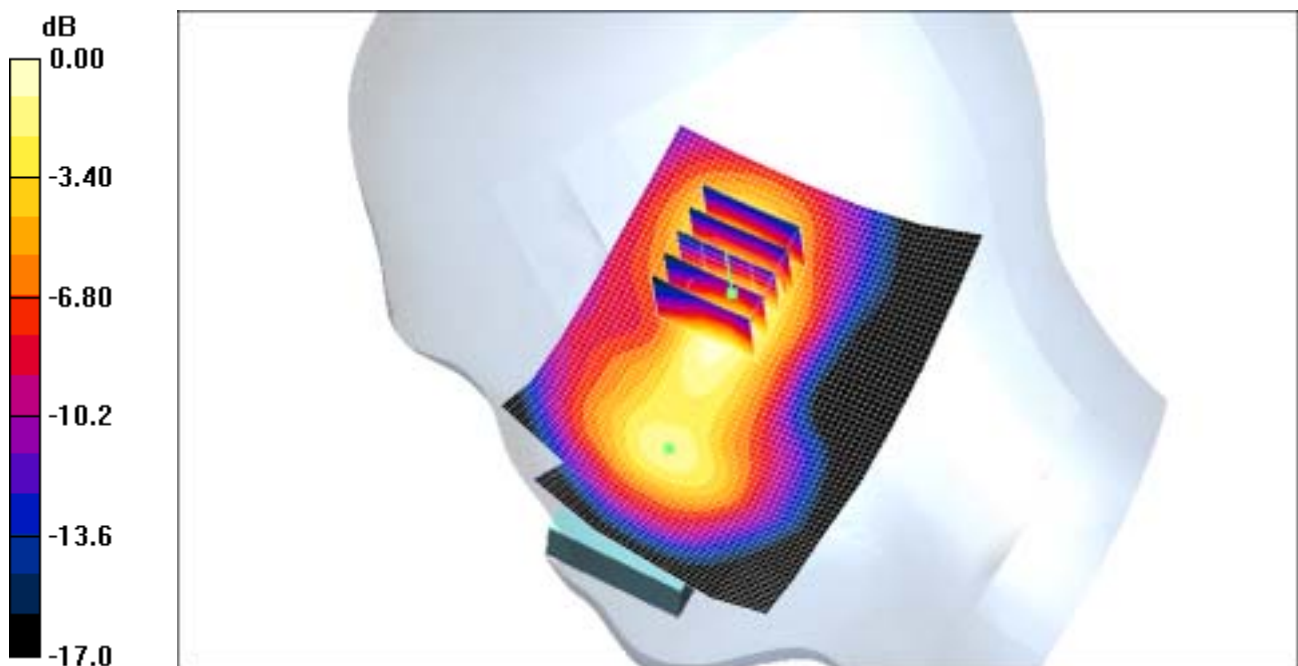
Measurement grid: dx=8mm, dy=8mm, dz=5mm

Reference Value = 14.7 V/m; Power Drift = 0.160 dB

Peak SAR (extrapolated) = 0.763 W/kg

SAR(1 g) = 0.419 mW/g

Maximum value of SAR (measured) = 0.448 mW/g



SAMSUNG FCC ID : A3LSGHX700 1900MHz GSM1900 Head SAR

DUT: SGH-X700; Serial: FC-107-A

Program Name: SGH-X700 GSM1900 Right (Job No. : FC-107)

Procedure Name: Ear/Tilt, Ch.810, Ant.Intenna, Bat.Standard

Procedure Notes: Meas.Tissue Temp(celsius)-21.6; Test Date-12/Aug/2005 [OET Bulletin 65-Supplement C, July 2001]

Communication System: GSM 1900; Frequency: 1909.8 MHz;Duty Cycle: 1:8.3

Medium parameters used: $f = 1909.8$ MHz; $\sigma = 1.38$ mho/m; $\epsilon_r = 39$; $\rho = 1000$ kg/m³

Phantom section: Right Section

DASY4 Configuration:

- Probe: EX3DV4 - SN3537; ConvF(8.29, 8.29, 8.29); Calibrated: 2004-12-15

- Sensor-Surface: 4mm (Mechanical Surface Detection)

- Electronics: DAE3 Sn533; Calibrated: 2004-12-03

- Phantom: SAM 1800/1900 MHz; Type: SAM; Serial: TP-1248

- Measurement SW: DASY4, V4.5 Build 19; Postprocessing SW: SEMCAD, V1.8 Build 146

Ear/Tilt, Ch.810, Ant.Intenna, Bat.Standard/Area Scan (51x71x1): Measurement grid:

$dx=20$ mm, $dy=20$ mm

Maximum value of SAR (interpolated) = 0.520 mW/g

Ear/Tilt, Ch.810, Ant.Intenna, Bat.Standard/Zoom Scan (5x5x7)/Cube 0:

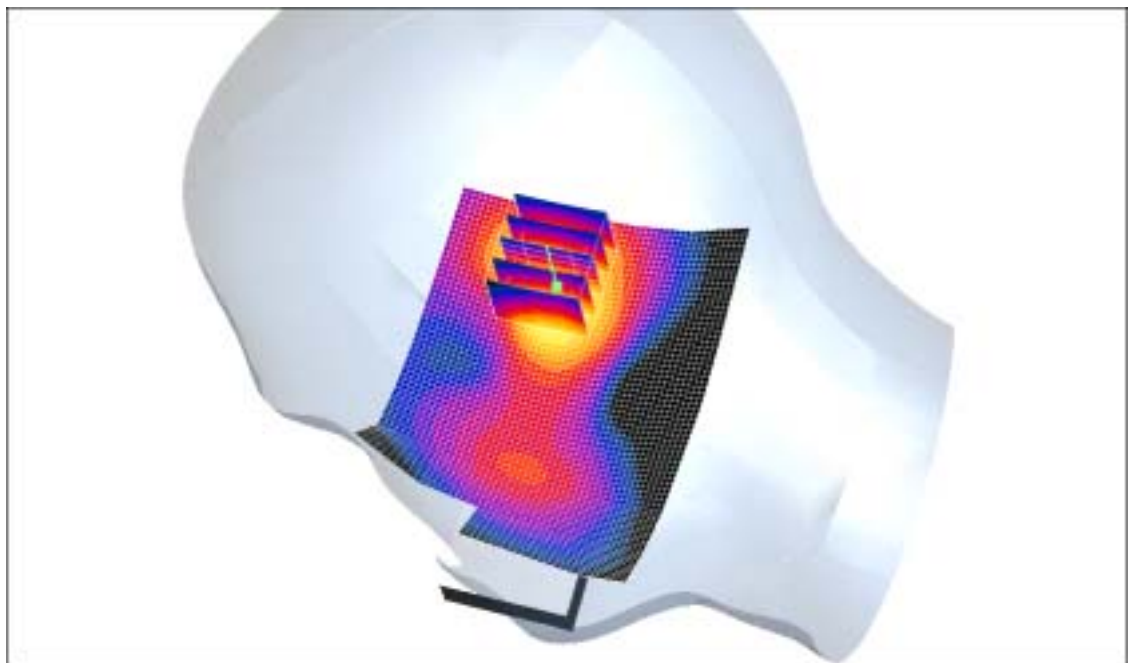
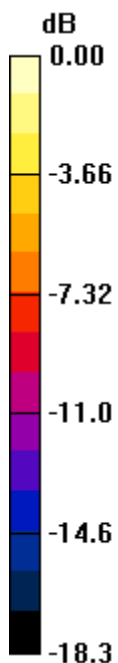
Measurement grid: $dx=8$ mm, $dy=8$ mm, $dz=5$ mm

Reference Value = 15.5 V/m; Power Drift = -0.014 dB

Peak SAR (extrapolated) = 0.932 W/kg

SAR(1 g) = 0.499 mW/g

Maximum value of SAR (measured) = 0.556 mW/g



0 dB = 0.556mW/g

SAMSUNG FCC ID : A3LSGHX700 1900MHz GSM1900 Head SAR

DUT: SGH-X700; Serial: FC-107-A

Program Name: SGH-X700 GSM1900 Left (Job No. : FC-107)

Procedure Name: Cheek/Touch, Ch.810, Ant.Intenna, Bat.Standard

Procedure Notes: Meas.Tissue Temp(celsius)-21.6; Test Date-12/Aug/2005 [OET Bulletin 65-Supplement C, July 2001]

Communication System: GSM 1900; Frequency: 1909.8 MHz;Duty Cycle: 1:8.3

Medium parameters used: $f = 1909.8$ MHz; $\sigma = 1.38$ mho/m; $\epsilon_r = 39$; $\rho = 1000$ kg/m³

Phantom section: Left Section

DASY4 Configuration:

- Probe: EX3DV4 - SN3537; ConvF(8.29, 8.29, 8.29); Calibrated: 2004-12-15

- Sensor-Surface: 4mm (Mechanical Surface Detection)

- Electronics: DAE3 Sn533; Calibrated: 2004-12-03

- Phantom: SAM 1800/1900 MHz; Type: SAM; Serial: TP-1248

- Measurement SW: DASY4, V4.5 Build 19; Postprocessing SW: SEMCAD, V1.8 Build 146

Cheek/Touch, Ch.810, Ant.Intenna, Bat.Standard/Area Scan (51x71x1): Measurement grid: dx=20mm, dy=20mm

Maximum value of SAR (interpolated) = 0.336 mW/g

Cheek/Touch, Ch.810, Ant.Intenna, Bat.Standard/Zoom Scan (5x5x7)/Cube 0:

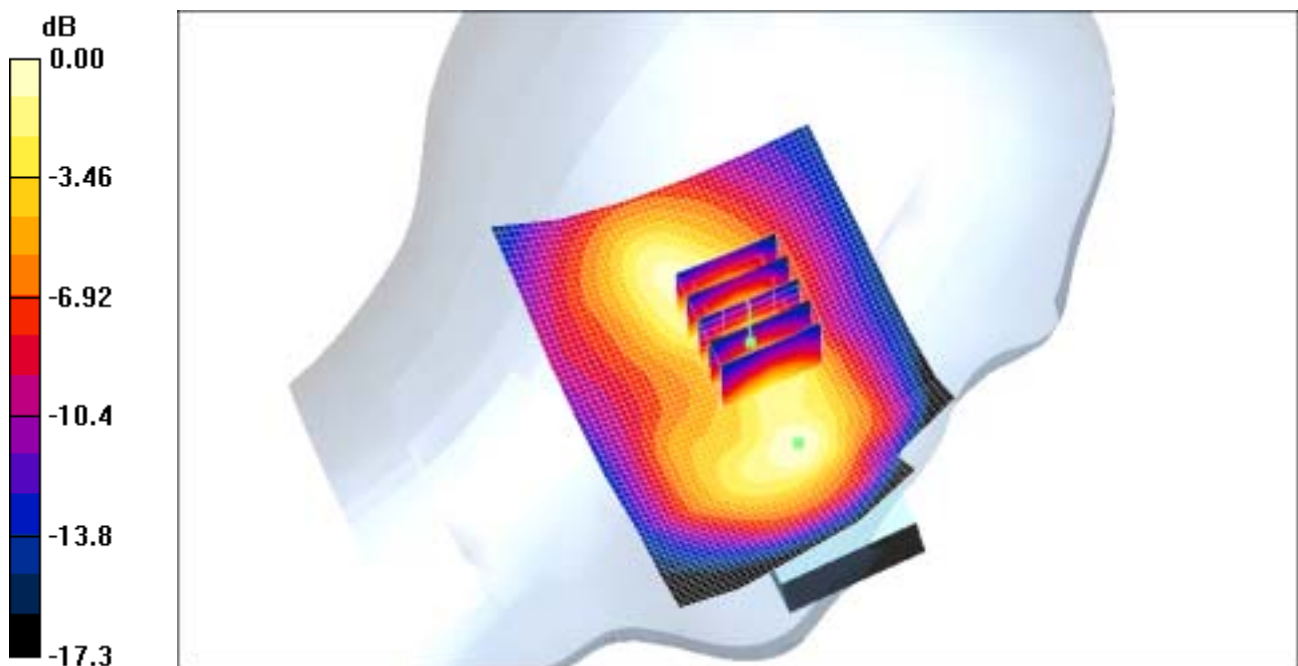
Measurement grid: dx=8mm, dy=8mm, dz=5mm

Reference Value = 12.4 V/m; Power Drift = 0.00 dB

Peak SAR (extrapolated) = 0.483 W/kg

SAR(1 g) = 0.312 mW/g

Maximum value of SAR (measured) = 0.331 mW/g



0 dB = 0.331mW/g

SAMSUNG FCC ID : A3LSGHX700 1900MHz GSM1900 Head SAR

DUT: SGH-X700; Serial: FC-107-A

Program Name: SGH-X700 GSM1900 Left (Job No. : FC-107)

Procedure Name: Ear/Tilt, Ch.661, Ant.Intenna, Bat.Standard

Procedure Notes: Meas.Tissue Temp(celsius)-21.6; Test Date-12/Aug/2005 [OET Bulletin 65-Supplement C, July 2001]

Communication System: GSM 1900; Frequency: 1880 MHz;Duty Cycle: 1:8.3

Medium parameters used: $f = 1880$ MHz; $\sigma = 1.38$ mho/m; $\epsilon_r = 39$; $\rho = 1000$ kg/m³

Phantom section: Left Section

DASY4 Configuration:

- Probe: EX3DV4 - SN3537; ConvF(8.29, 8.29, 8.29); Calibrated: 2004-12-15

- Sensor-Surface: 4mm (Mechanical Surface Detection)

- Electronics: DAE3 Sn533; Calibrated: 2004-12-03

- Phantom: SAM 1800/1900 MHz; Type: SAM; Serial: TP-1248

- Measurement SW: DASY4, V4.5 Build 19; Postprocessing SW: SEMCAD, V1.8 Build 146

Ear/Tilt, Ch.661, Ant.Intenna, Bat.Standard/Area Scan (51x71x1): Measurement grid:

$dx=20$ mm, $dy=20$ mm

Maximum value of SAR (interpolated) = 0.386 mW/g

Ear/Tilt, Ch.661, Ant.Intenna, Bat.Standard/Zoom Scan (5x5x7)/Cube 0:

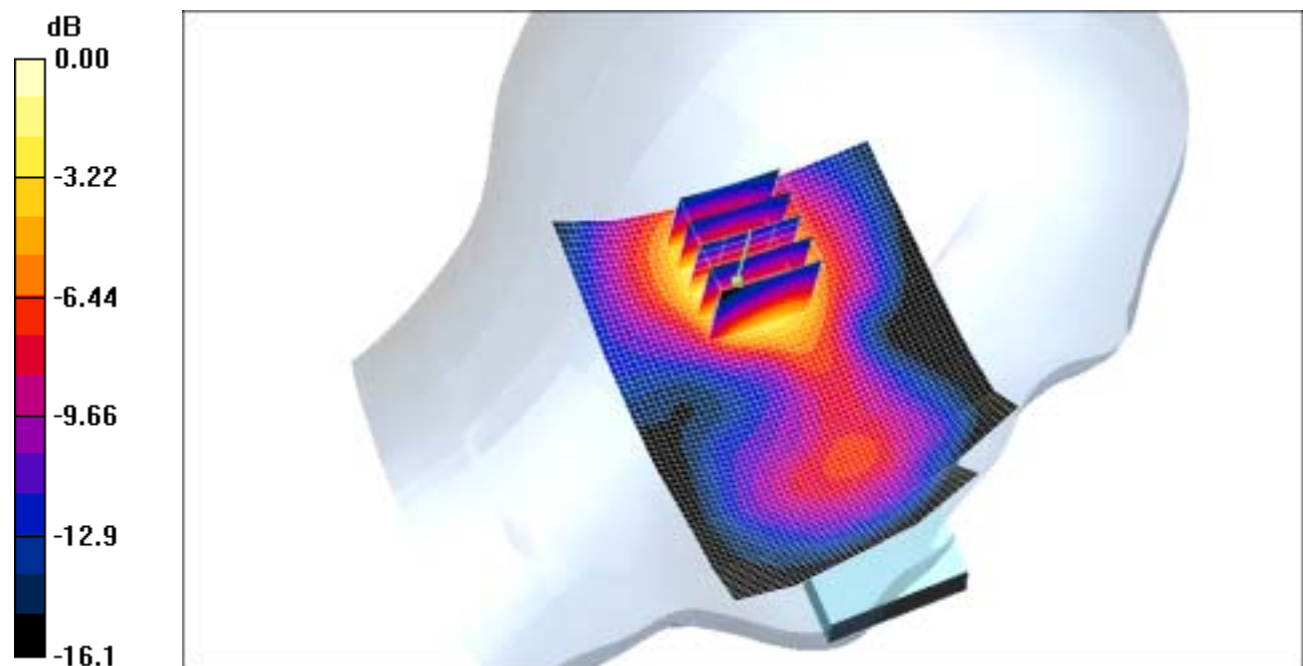
Measurement grid: $dx=8$ mm, $dy=8$ mm, $dz=5$ mm

Reference Value = 13.7 V/m; Power Drift = 0.016 dB

Peak SAR (extrapolated) = 0.602 W/kg

SAR(1 g) = 0.343 mW/g

Maximum value of SAR (measured) = 0.376 mW/g



0 dB = 0.376mW/g

SAMSUNG FCC ID : A3LSGHX700 1900MHz GSM1900 Head SAR

DUT: SGH-X700; Serial: FC-107-A

Program Name: SGH-X700 GSM1900 Right (Job No. : FC-107)

Procedure Name: Ear/Tilt, Ch.810, Ant.Intenna, Bat.Standard With BT on

Procedure Notes: Meas.Tissue Temp(celsius)-21.6; Test Date-12/Aug/2005 [OET Bulletin 65-Supplement C, July 2001]

Communication System: GSM 1900; Frequency: 1909.8 MHz;Duty Cycle: 1:8.3

Medium parameters used: $f = 1909.8$ MHz; $\sigma = 1.38$ mho/m; $\epsilon_r = 39$; $\rho = 1000$ kg/m³

Phantom section: Right Section

DASY4 Configuration:

- Probe: EX3DV4 - SN3537; ConvF(8.29, 8.29, 8.29); Calibrated: 2004-12-15

- Sensor-Surface: 4mm (Mechanical Surface Detection)

- Electronics: DAE3 Sn533; Calibrated: 2004-12-03

- Phantom: SAM 1800/1900 MHz; Type: SAM; Serial: TP-1248

- Measurement SW: DASY4, V4.5 Build 19; Postprocessing SW: SEMCAD, V1.8 Build 146

Ear/Tilt, Ch.810, Ant.Intenna, Bat.Standard With BT on/Area Scan (51x71x1):

Measurement grid: dx=20mm, dy=20mm

Maximum value of SAR (interpolated) = 0.508 mW/g

Ear/Tilt, Ch.810, Ant.Intenna, Bat.Standard With BT on/Zoom Scan (5x5x7)/Cube

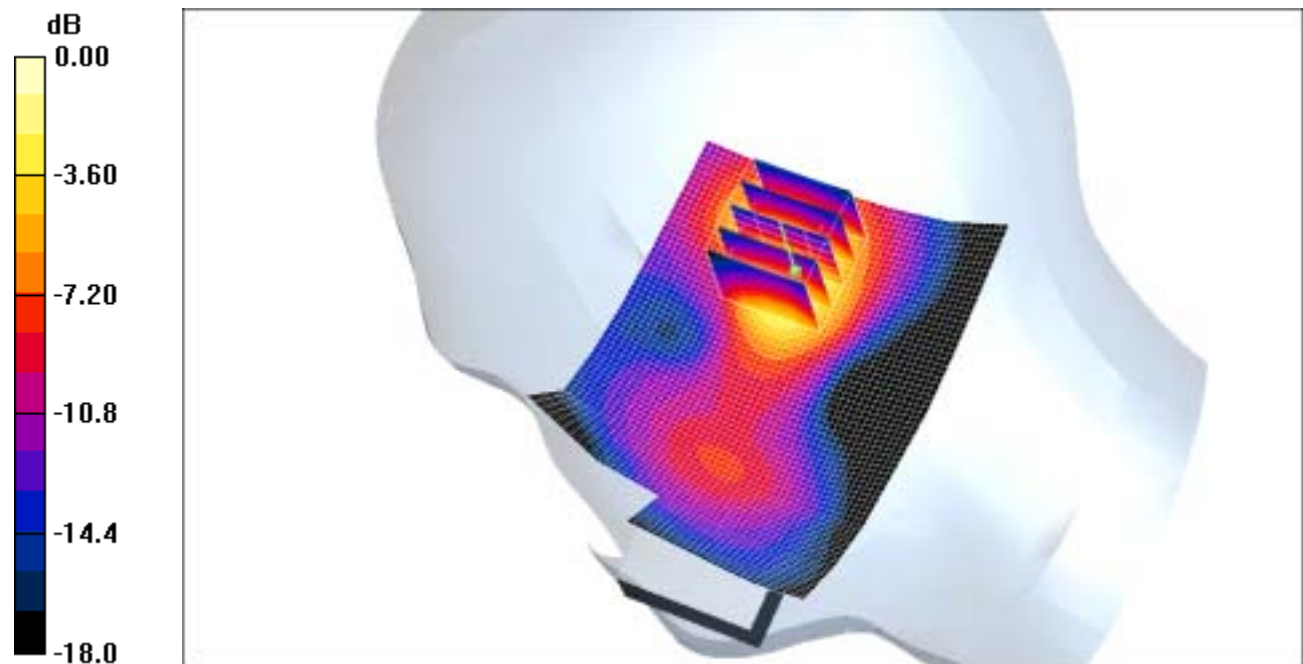
0: Measurement grid: dx=8mm, dy=8mm, dz=5mm

Reference Value = 15.3 V/m; Power Drift = 0.034 dB

Peak SAR (extrapolated) = 0.925 W/kg

SAR(1 g) = 0.496 mW/g

Maximum value of SAR (measured) = 0.520 mW/g



0 dB = 0.520mW/g

SAMSUNG FCC ID : A3LSGHX700 1900MHz GSM1900 Body SAR

DUT: SGH-X700; Serial: FC-107-A

Program Name: SGH-X700 GSM1900 Body (Job No. : FC-107)

Procedure Name: Body, Ch.810, Ant.Intenna, Bat.Standard

Procedure Notes: Meas.Tissue Temp(celsius)-21.6;Test Date-12/Aug/2005[OET Bulletin 65-Supplement C, July 2001]

Communication System: Body GPRS ; Frequency: 1909.8 MHz;Duty Cycle: 1:4.15

Medium parameters used: $f = 1909.8$ MHz; $\sigma = 1.54$ mho/m; $\epsilon_r = 51.6$; $\rho = 1000$ kg/m³

Phantom section: Flat Section

DASY4 Configuration:

- Probe: EX3DV4 - SN3537; ConvF(7.76, 7.76, 7.76); Calibrated: 2004-12-15

- Sensor-Surface: 4mm (Mechanical Surface Detection)

- Electronics: DAE3 Sn533; Calibrated: 2004-12-03

- Phantom: SAM 1800/1900 MHz; Type: SAM; Serial: TP-1248

- Measurement SW: DASY4, V4.5 Build 19; Postprocessing SW: SEMCAD, V1.8 Build 146

Body, Ch.810, Ant.Intenna, Bat.Standard/Area Scan (51x71x1): Measurement grid:

$dx=20$ mm, $dy=20$ mm

Maximum value of SAR (interpolated) = 0.672 mW/g

Body, Ch.810, Ant.Intenna, Bat.Standard/Zoom Scan (5x5x7)/Cube 0: Measurement

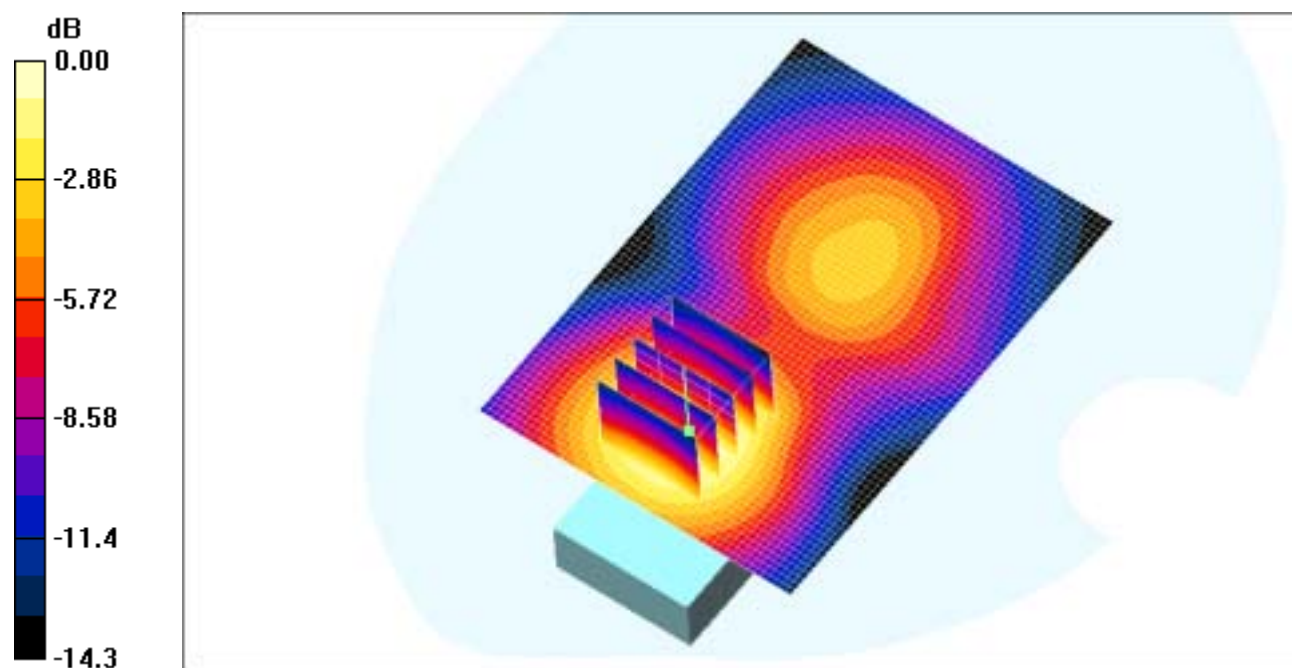
grid: $dx=8$ mm, $dy=8$ mm, $dz=5$ mm

Reference Value = 13.3 V/m; Power Drift = 0.00 dB

Peak SAR (extrapolated) = 0.815 W/kg

SAR(1 g) = 0.566 mW/g

Maximum value of SAR (measured) = 0.609 mW/g



0 dB = 0.609mW/g

SAMSUNG FCC ID : A3LSGHX700 1900MHz GSM1900 Body SAR

DUT: SGH-X700; Serial: FC-107-A

Program Name: SGH-X700 GSM1900 Body (Job No. : FC-107)

Procedure Name: Body, Ch.810, Ant.Intenna, Bat.Standard With BT ON

Procedure Notes: Meas.Tissue Temp(celsius)-21.6;Test Date-12/Aug/2005[OET Bulletin 65-Supplement C, July 2001]

Communication System: Body GPRS ; Frequency: 1909.8 MHz;Duty Cycle: 1:4.15

Medium parameters used: $f = 1909.8$ MHz; $\sigma = 1.54$ mho/m; $\epsilon_r = 51.6$; $\rho = 1000$ kg/m³

Phantom section: Flat Section

DASY4 Configuration:

- Probe: EX3DV4 - SN3537; ConvF(7.76, 7.76, 7.76); Calibrated: 2004-12-15

- Sensor-Surface: 4mm (Mechanical Surface Detection)

- Electronics: DAE3 Sn533; Calibrated: 2004-12-03

- Phantom: SAM 1800/1900 MHz; Type: SAM; Serial: TP-1248

- Measurement SW: DASY4, V4.5 Build 19; Postprocessing SW: SEMCAD, V1.8 Build 146

Body, Ch.810, Ant.Intenna, Bat.Standard With BT ON/Area Scan (51x71x1):

Measurement grid: dx=20mm, dy=20mm

Maximum value of SAR (interpolated) = 0.594 mW/g

Body, Ch.810, Ant.Intenna, Bat.Standard With BT ON/Zoom Scan (5x5x7)/Cube 0:

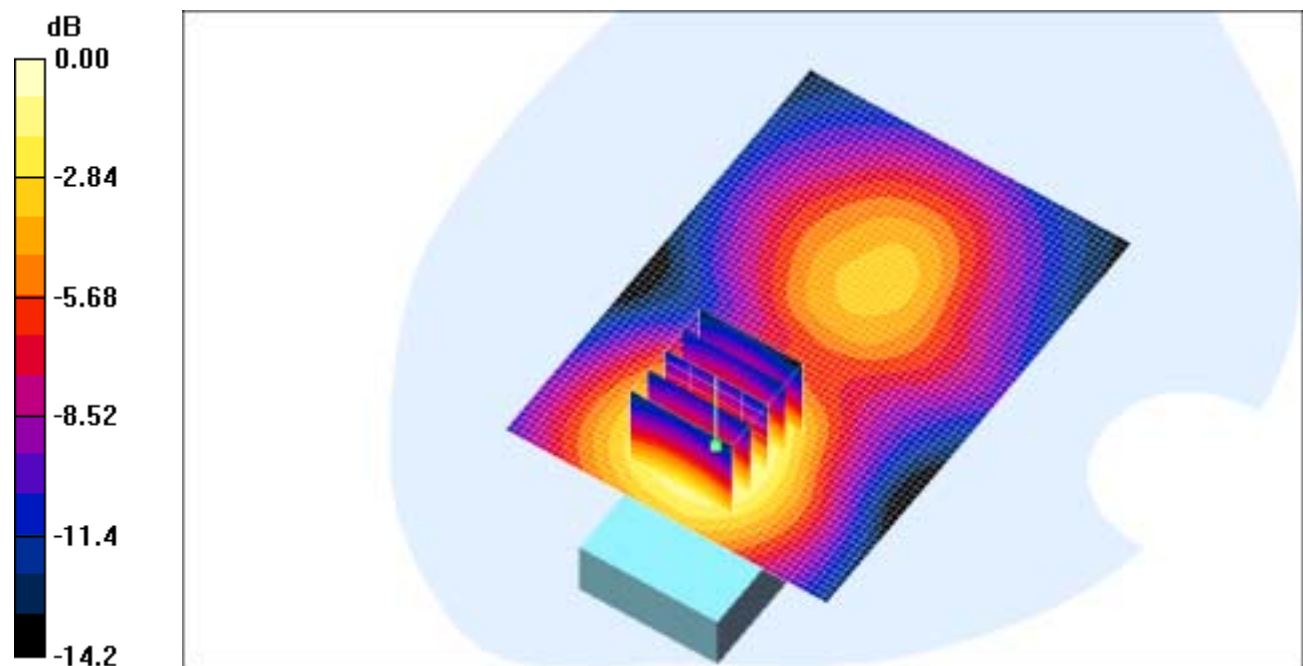
Measurement grid: dx=8mm, dy=8mm, dz=5mm

Reference Value = 12.7 V/m; Power Drift = 0.01 dB

Peak SAR (extrapolated) = 0.737 W/kg

SAR(1 g) = 0.507 mW/g

Maximum value of SAR (measured) = 0.549 mW/g



0 dB = 0.549mW/g

SAMSUNG FCC ID : A3LSGHX700 1900MHz GSM1900 Head SAR

DUT: SGH-X700; Serial: FC-107-A

Program Name: SGH-X700 GSM1900 Right (Job No. : FC-107)

Procedure Name: Ear/Tilt, Ch.810, Ant.Intenna, Bat.Standard

Procedure Notes: Meas.Tissue Temp(celsius)-21.6; Test Date-12/Aug/2005 [OET Bulletin 65-Supplement C, July 2001]

Communication System: GSM 1900; Frequency: 1909.8 MHz;Duty Cycle: 1:8.3

Medium parameters used: $f = 1909.8$ MHz; $\sigma = 1.38$ mho/m; $\epsilon_r = 39$; $\rho = 1000$ kg/m³

Phantom section: Right Section

DASY4 Configuration:

- Probe: EX3DV4 - SN3537; ConvF(8.29, 8.29, 8.29); Calibrated: 2004-12-15

- Sensor-Surface: 4mm (Mechanical Surface Detection)

- Electronics: DAE3 Sn533; Calibrated: 2004-12-03

- Phantom: SAM 1800/1900 MHz; Type: SAM; Serial: TP-1248

- Measurement SW: DASY4, V4.5 Build 19; Postprocessing SW: SEMCAD, V1.8 Build 146

Ear/Tilt, Ch.810, Ant.Intenna, Bat.Standard/Area Scan (51x71x1): Measurement grid:
dx=20mm, dy=20mm

Maximum value of SAR (interpolated) = 0.520 mW/g

Ear/Tilt, Ch.810, Ant.Intenna, Bat.Standard/Zoom Scan (5x5x7)/Cube 0:

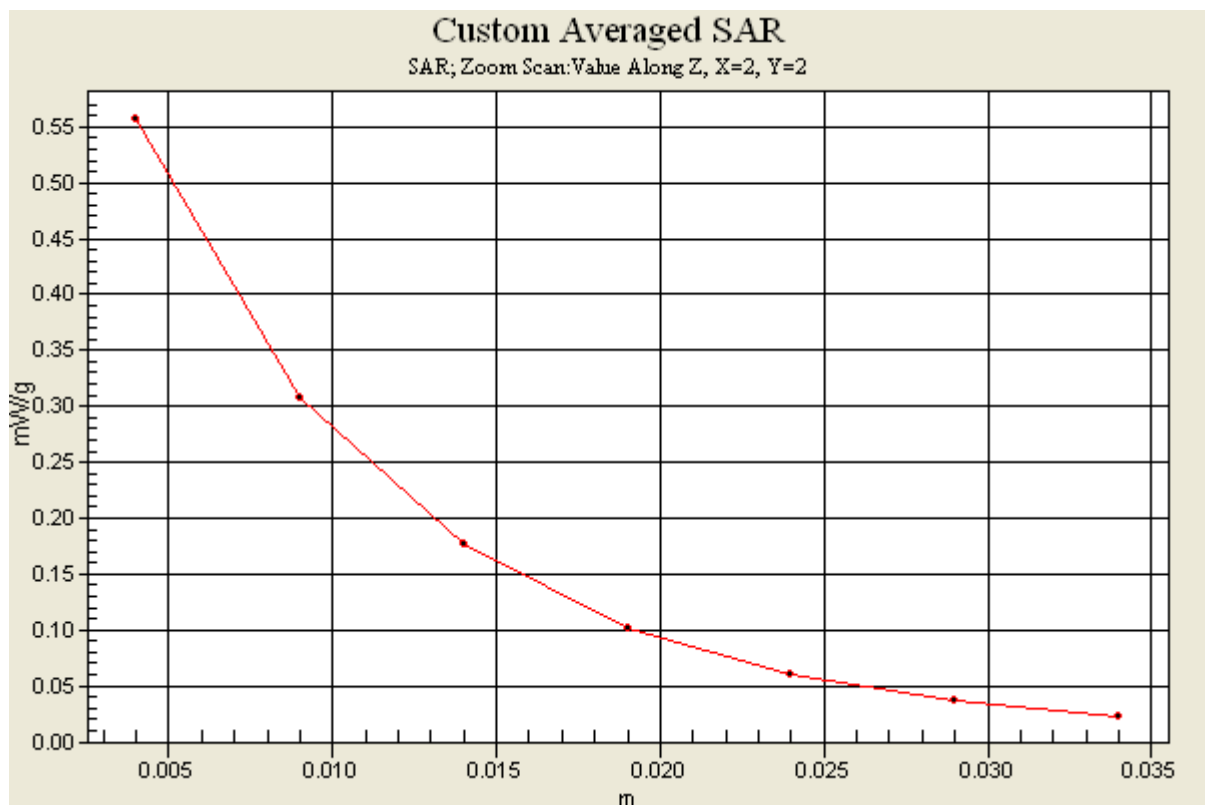
Measurement grid: dx=8mm, dy=8mm, dz=5mm

Reference Value = 15.5 V/m; Power Drift = -0.014 dB

Peak SAR (extrapolated) = 0.932 W/kg

SAR(1 g) = 0.499 mW/g

Maximum value of SAR (measured) = 0.556 mW/g



SAMSUNG FCC ID : A3LSGHX700 1900MHz GSM1900 Head SAR

DUT: SGH-X700; Serial: FC-107-A

Program Name: SGH-X700 GSM1900 Right (Job No. : FC-107)

Procedure Name: Ear/Tilt, Ch.810, Ant.Intenna, Bat.Standard With BT on

Procedure Notes: Meas.Tissue Temp(celsius)-21.6; Test Date-12/Aug/2005 [OET Bulletin 65-Supplement C, July 2001]

Communication System: GSM 1900; Frequency: 1909.8 MHz; Duty Cycle: 1:8.3

Medium parameters used: $f = 1909.8$ MHz; $\sigma = 1.38$ mho/m; $\epsilon_r = 39$; $\rho = 1000$ kg/m³

Phantom section: Right Section

DASY4 Configuration:

- Probe: EX3DV4 - SN3537; ConvF(8.29, 8.29, 8.29); Calibrated: 2004-12-15

- Sensor-Surface: 4mm (Mechanical Surface Detection)

- Electronics: DAE3 Sn533; Calibrated: 2004-12-03

- Phantom: SAM 1800/1900 MHz; Type: SAM; Serial: TP-1248

- Measurement SW: DASY4, V4.5 Build 19; Postprocessing SW: SEMCAD, V1.8 Build 146

Ear/Tilt, Ch.810, Ant.Intenna, Bat.Standard With BT on/Area Scan (51x71x1):

Measurement grid: dx=20mm, dy=20mm

Maximum value of SAR (interpolated) = 0.508 mW/g

Ear/Tilt, Ch.810, Ant.Intenna, Bat.Standard With BT on/Zoom Scan (5x5x7)/Cube

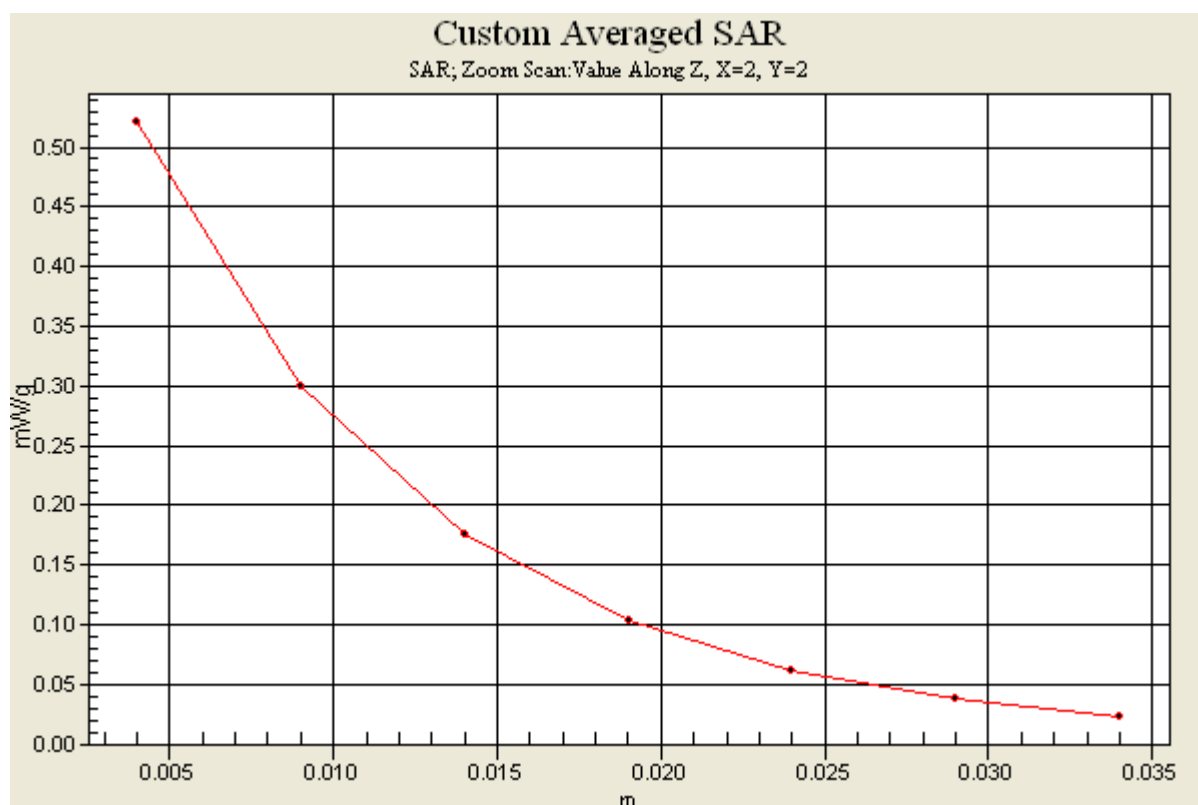
0: Measurement grid: dx=8mm, dy=8mm, dz=5mm

Reference Value = 15.3 V/m; Power Drift = 0.034 dB

Peak SAR (extrapolated) = 0.925 W/kg

SAR(1 g) = 0.496 mW/g

Maximum value of SAR (measured) = 0.520 mW/g



SAMSUNG FCC ID : A3LSGHX700 1900MHz GSM1900 Body SAR

DUT: SGH-X700; Serial: FC-107-A

Program Name: SGH-X700 GSM1900 Body (Job No. : FC-107)

Procedure Name: Body, Ch.810, Ant.Intenna, Bat.Standard

Procedure Notes: Meas.Tissue Temp(celsius)-21.6; Test Date-12/Aug/2005 [OET Bulletin 65-Supplement C, July 2001]

Communication System: Body GPRS ; Frequency: 1909.8 MHz; Duty Cycle: 1:4.15

Medium parameters used: $f = 1909.8$ MHz; $\sigma = 1.54$ mho/m; $\epsilon_r = 51.6$; $\rho = 1000$ kg/m³

Phantom section: Flat Section

DASY4 Configuration:

- Probe: EX3DV4 - SN3537; ConvF(7.76, 7.76, 7.76); Calibrated: 2004-12-15

- Sensor-Surface: 4mm (Mechanical Surface Detection)

- Electronics: DAE3 Sn533; Calibrated: 2004-12-03

- Phantom: SAM 1800/1900 MHz; Type: SAM; Serial: TP-1248

- Measurement SW: DASY4, V4.5 Build 19; Postprocessing SW: SEMCAD, V1.8 Build 146

Body, Ch.810, Ant.Intenna, Bat.Standard/Area Scan (51x71x1): Measurement grid:
dx=20mm, dy=20mm

Maximum value of SAR (interpolated) = 0.672 mW/g

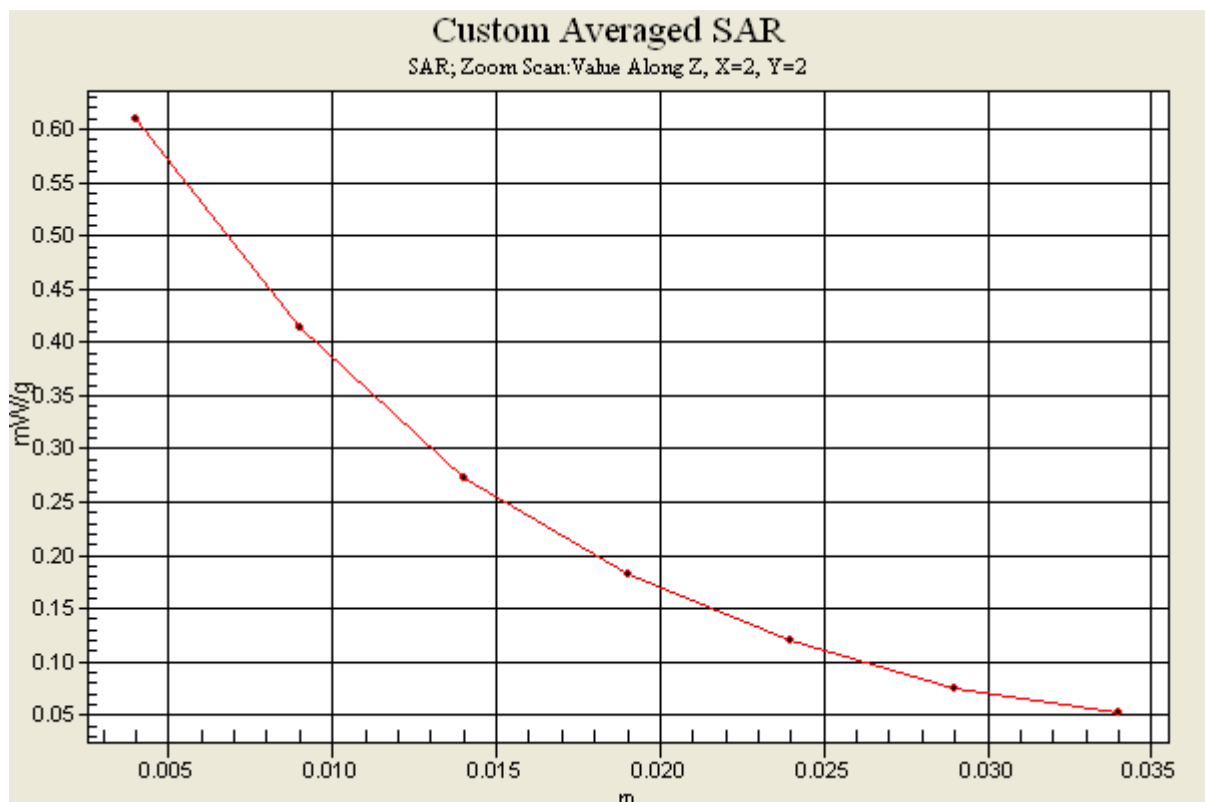
Body, Ch.810, Ant.Intenna, Bat.Standard/Zoom Scan (5x5x7)/Cube 0: Measurement grid: dx=8mm, dy=8mm, dz=5mm

Reference Value = 13.3 V/m; Power Drift = 0.00 dB

Peak SAR (extrapolated) = 0.815 W/kg

SAR(1 g) = 0.566 mW/g

Maximum value of SAR (measured) = 0.609 mW/g



SAMSUNG FCC ID : A3LSGHX700 1900MHz GSM1900 Body SAR

DUT: SGH-X700; Serial: FC-107-A

Program Name: SGH-X700 GSM1900 Body (Job No. : FC-107)

Procedure Name: Body, Ch.810, Ant.Intenna, Bat.Standard With BT ON

Procedure Notes: Meas.Tissue Temp(celsius)-21.6; Test Date-12/Aug/2005 [OET Bulletin 65-Supplement C, July 2001]

Communication System: Body GPRS ; Frequency: 1909.8 MHz; Duty Cycle: 1:4.15

Medium parameters used: $f = 1909.8$ MHz; $\sigma = 1.54$ mho/m; $\epsilon_r = 51.6$; $\rho = 1000$ kg/m³

Phantom section: Flat Section

DASY4 Configuration:

- Probe: EX3DV4 - SN3537; ConvF(7.76, 7.76, 7.76); Calibrated: 2004-12-15

- Sensor-Surface: 4mm (Mechanical Surface Detection)

- Electronics: DAE3 Sn533; Calibrated: 2004-12-03

- Phantom: SAM 1800/1900 MHz; Type: SAM; Serial: TP-1248

- Measurement SW: DASY4, V4.5 Build 19; Postprocessing SW: SEMCAD, V1.8 Build 146

Body, Ch.810, Ant.Intenna, Bat.Standard With BT ON/Area Scan (51x71x1):

Measurement grid: dx=20mm, dy=20mm

Maximum value of SAR (interpolated) = 0.594 mW/g

Body, Ch.810, Ant.Intenna, Bat.Standard With BT ON/Zoom Scan (5x5x7)/Cube 0:

Measurement grid: dx=8mm, dy=8mm, dz=5mm

Reference Value = 12.7 V/m; Power Drift = 0.01 dB

Peak SAR (extrapolated) = 0.737 W/kg

SAR(1 g) = 0.507 mW/g

Maximum value of SAR (measured) = 0.549 mW/g

