

DUT: Dipole 1900 MHz;

Program Name: 1900MHz Dipole Validation 2006.10.16

Procedure Name: 1900MHz @ 250mW

Meas. Ambient Temp(celsius)-22.2, Tissue Temp(celsius)-21.6; Test Date-16/Oct/2006

Communication System: CW; Frequency: 1900 MHz;Duty Cycle: 1:1

Medium parameters used: $f = 1900$ MHz; $\sigma = 1.41$ mho/m; $\epsilon_r = 38.5$; $\rho = 1000$ kg/m³

Phantom section: Flat Section

DASY4 Configuration:

- Probe: ES3DV3 - SN3085; ConvF(4.81, 4.81, 4.81); Calibrated: 2005-11-22
- Sensor-Surface: 4mm (Mechanical Surface Detection)
- Electronics: DAE3 Sn486; Calibrated: 2006-07-17
- Phantom: PHANTOM #2; Type: SAM; Serial: TP-1141
- Measurement SW: DASY4, V4.7 Build 44; Postprocessing SW: SEMCAD, V1.8 Build 171

1900MHz @ 250mW/Area Scan (51x51x1): Measurement grid: dx=20mm, dy=20mm
Maximum value of SAR (interpolated) = 15.6 mW/g

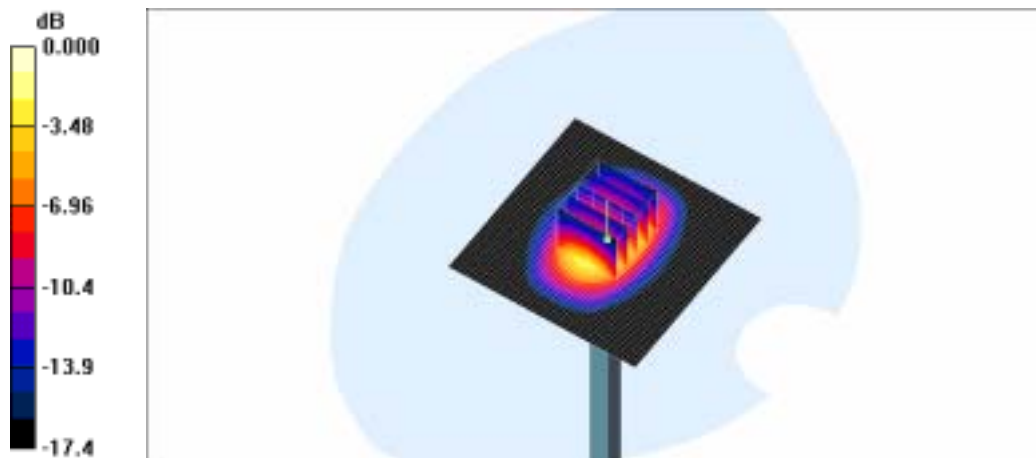
1900MHz @ 250mW/Zoom Scan (5x5x7)/Cube 0: Measurement grid: dx=8mm, dy=8mm, dz=5mm

Reference Value = 92.0 V/m; Power Drift = 0.017 dB

Peak SAR (extrapolated) = 18.5 W/kg

SAR(1 g) = 10.3 mW/g

Maximum value of SAR (measured) = 11.6 mW/g



0 dB = 11.6mW/g