

## **APPENDIX E**

### **The Validation Measurements**

### 1900MHz Dipole Validation

DUT: Dipole 1900 MHz; Serial: 5d023

Program Name: 1900MHz Dipole Validation 2006.05.16

Procedure Name: 1900MHz

#### Procedure Notes:

Communication System: CW; Frequency: 1900 MHz; Duty Cycle: 1:1

Medium parameters used:  $f = 1900$  MHz;  $\sigma = 1.41$  mho/m;  $\epsilon_r = 39$ ;  $\rho = 1000$  kg/m<sup>3</sup>

Phantom section: Flat Section

DASY4 Configuration:

- Probe: ES3DV3 - SN3085; ConvF(4.81, 4.81, 4.81); Calibrated: 2005-11-22
- Sensor-Surface: 4mm (Mechanical Surface Detection)
- Electronics: DAE3 Sn486; Calibrated: 2005-08-30
- Phantom: SAM PHANTOM #2; Type: SAM; Serial: TP-1248
- Measurement SW: DASY4, V4.6 Build 23; Postprocessing SW: SEMCAD, V1.8 Build 160

**1900MHz/Area Scan (51x51x1):** Measurement grid: dx=20mm, dy=20mm

Maximum value of SAR (interpolated) = 14.4 mW/g

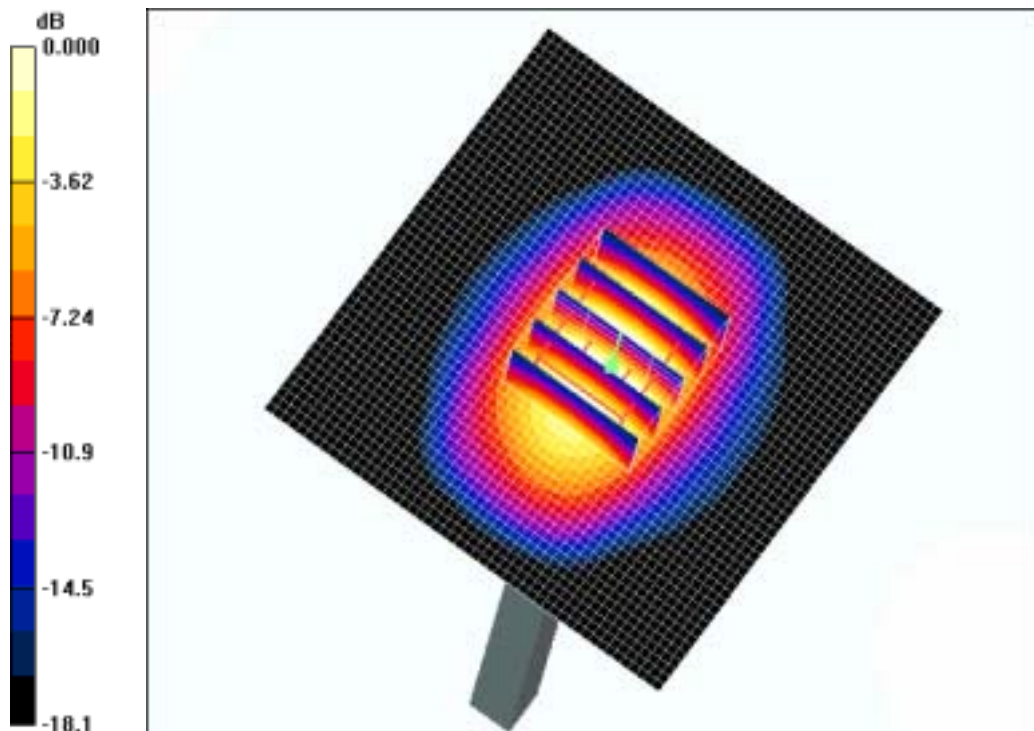
**1900MHz/Zoom Scan (5x5x7)/Cube 0:** Measurement grid: dx=8mm, dy=8mm, dz=5mm

Reference Value = 90.4 V/m; Power Drift = -0.036 dB

Peak SAR (extrapolated) = 17.7 W/kg

**SAR(1 g) = 9.82 mW/g**

Maximum value of SAR (measured) = 11.0 mW/g



0 dB = 11.0mW/g