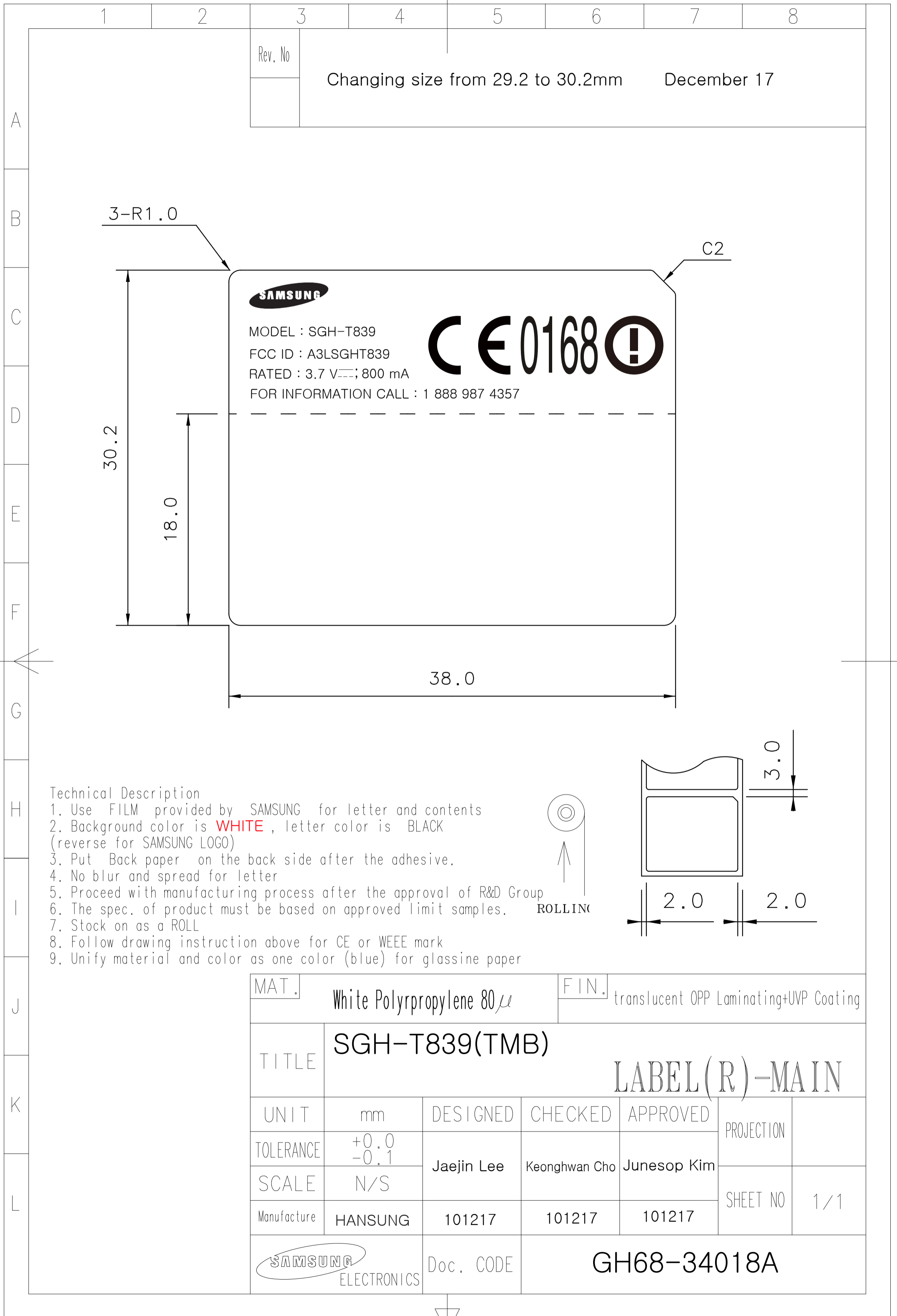
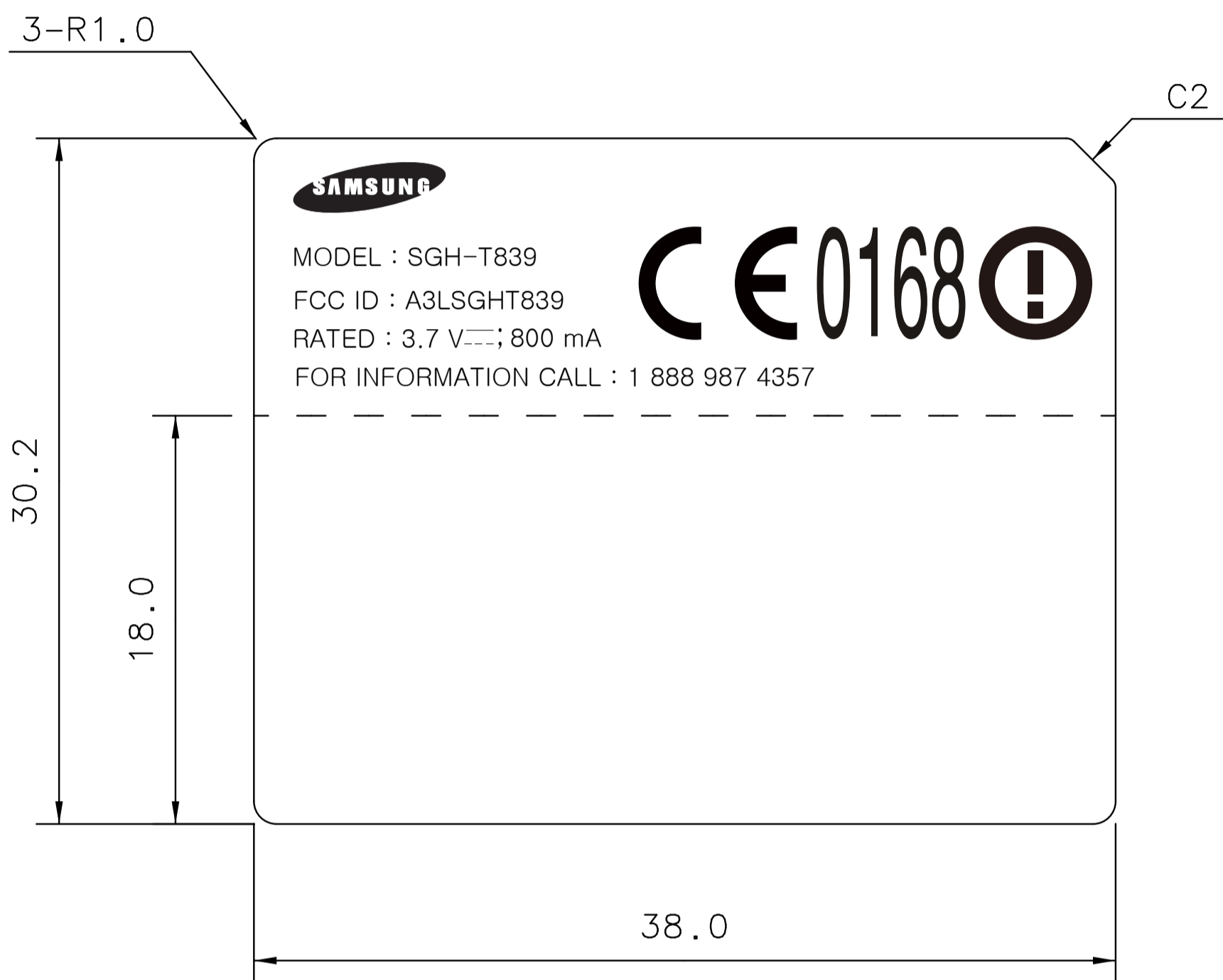


This drawing is property of SEC. Use or copy of this drawing without proper permission from the appropriate technical-document managing department is prohibited.

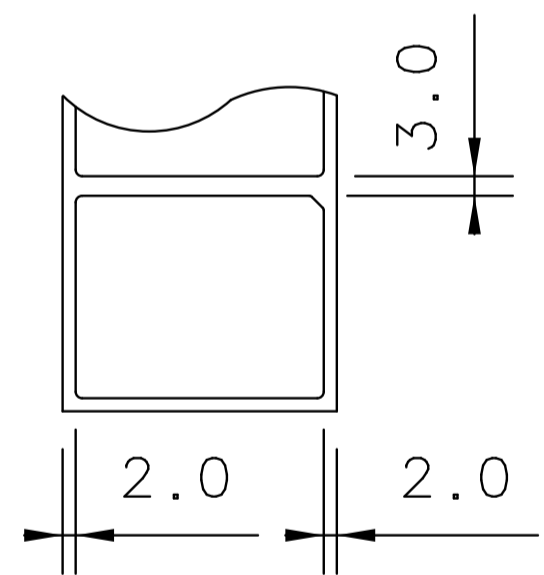
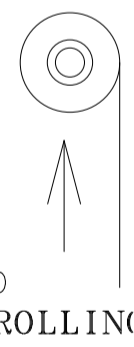


1	2	3	4	5	6	7	8
Rev. No		Changing size from 29.2 to 30.2mm			December 17		



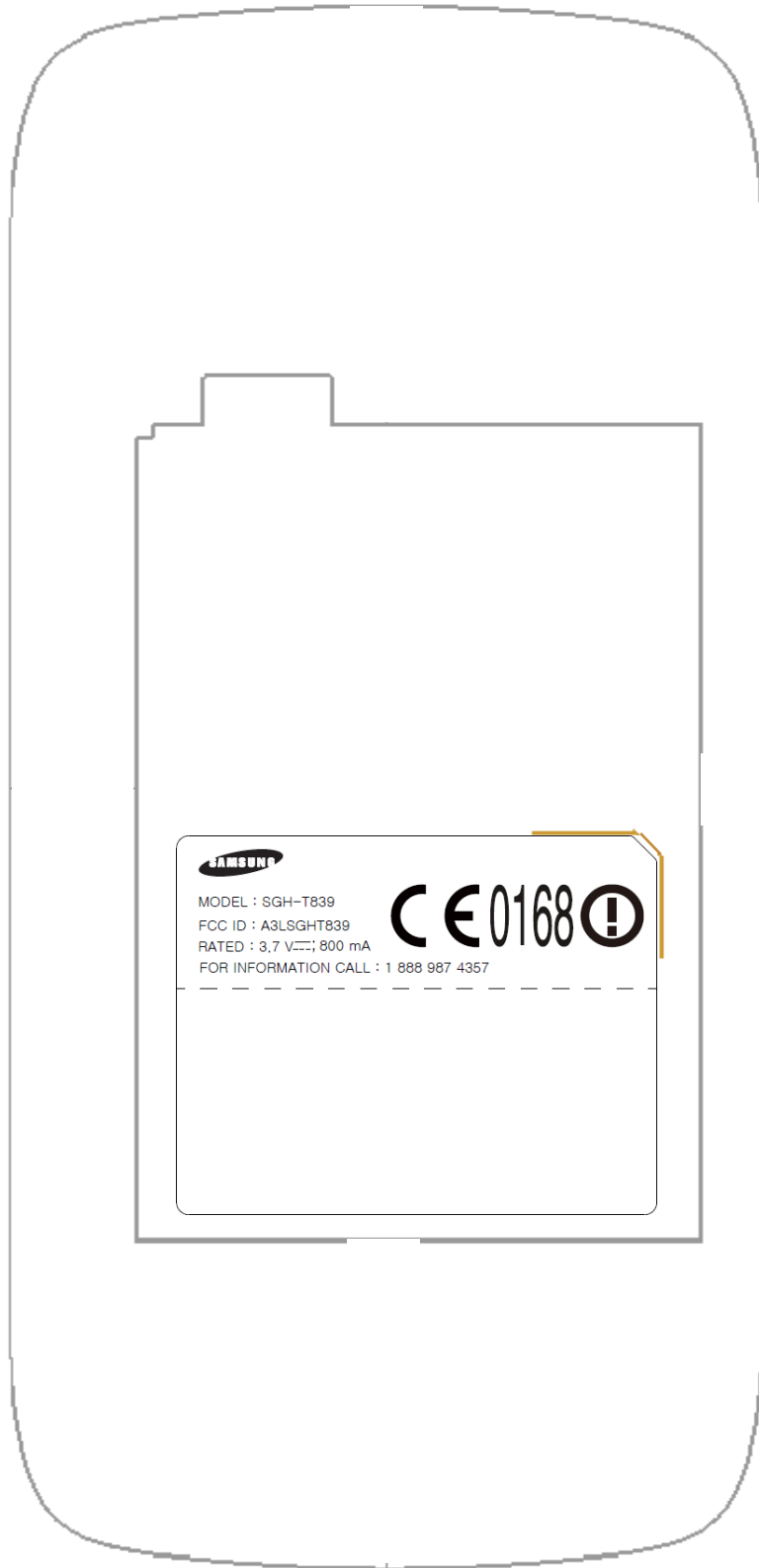
Technical Description

1. Use FILM provided by SAMSUNG for letter and contents
2. Background color is **WHITE**, letter color is **BLACK** (reverse for SAMSUNG LOGO)
3. Put Back paper on the back side after the adhesive.
4. No blur and spread for letter
5. Proceed with manufacturing process after the approval of R&D Group
6. The spec. of product must be based on approved limit samples.
7. Stock on as a ROLL
8. Follow drawing instruction above for CE or WEEE mark
9. Unify material and color as one color (blue) for glassine paper



MAT.	White Polypropylene 80 μ		FIN.	translucent OPP Laminating+UVP Coating		
TITLE	SGH-T839(TMB)		LABEL(R)-MAIN			
UNIT	mm	DESIGNED	CHECKED	APPROVED	PROJECTION	
TOLERANCE	+0.0 -0.1	Jaejin Lee	Keonghwan Cho	Junesop Kim		
SCALE	N/S				SHEET NO	1/1
Manufacture	HANSUNG	101217	101217	101217		
		Doc. CODE	GH68-34018A			





The label placed inside the battery compartment