

SAMSUNG FCC ID : A3LSGHT329 835MHz - -GSM850 Head SAR

DUT: SGH- T329; Serial: FD-236-J

Program Name: SGH- T329 GSM850 Right(Job No. : FD-236)

Procedure Name: Cheek/Touch, Ch.190, Ant.Intenna, Bat.Standard

Meas. Ambient Temp(celsius)-22.1,Tissue Temp(celsius)-21.6 ;Test Date-13/Dec/2006

Communication System: GSM850; Frequency: 836.6 MHz;Duty Cycle: 1:8.3

Medium parameters used: $f = 836.6$ MHz; $\sigma = 0.9$ mho/m; $\epsilon_r = 40.4$; $\rho = 1000$ kg/m³

Phantom section: Right Section

DASY4 Configuration:

- Probe: EX3DV4 - SN3537; ConvF(9.48, 9.48, 9.48); Calibrated: 2006-11-23
- Sensor-Surface: 4mm (Mechanical Surface Detection)
- Electronics: DAE4 Sn686; Calibrated: 2006-11-20
- Phantom: SAM PHANTOM #2; Type: SAM; Serial: TP-1248
- Measurement SW: DASY4, V4.7 Build 44; Postprocessing SW: SEMCAD, V1.8 Build 171

Cheek/Touch, Ch.190, Ant.Intenna, Bat.Standard/Area Scan (51x71x1): Measurement grid: dx=20mm, dy=20mm

Maximum value of SAR (interpolated) = 1.42 mW/g

Cheek/Touch, Ch.190, Ant.Intenna, Bat.Standard/Zoom Scan (5x5x7)/Cube 0:

Measurement grid: dx=8mm, dy=8mm, dz=5mm

Reference Value = 33.8 V/m; Power Drift = -0.107 dB

Peak SAR (extrapolated) = 2.15 W/kg

SAR(1 g) = 1.38 mW/g

Maximum value of SAR (measured) = 1.49 mW/g



0 dB = 1.49mW/g

SAMSUNG FCC ID : A3LSGHT329 835MHz --GSM850 Head SAR

DUT: SGH-T329; Serial: FD-236-J

Program Name: SGH-T329 GSM850 Right(Job No. : FD-236)

Procedure Name: Ear/Tilt, Ch.190, Ant.Intenna Bat.Standard

Meas. Ambient Temp(celsius)-22.1,Tissue Temp(celsius)-21.6 ;Test Date-13/Dec/2006

Communication System: GSM850; Frequency: 836.6 MHz;Duty Cycle: 1:8.3

Medium parameters used: $f = 836.6$ MHz; $\sigma = 0.9$ mho/m; $\epsilon_r = 40.4$; $\rho = 1000$ kg/m³

Phantom section: Right Section

DASY4 Configuration:

- Probe: EX3DV4 - SN3537; ConvF(9.48, 9.48, 9.48); Calibrated: 2006-11-23
- Sensor-Surface: 4mm (Mechanical Surface Detection)
- Electronics: DAE4 Sn686; Calibrated: 2006-11-20
- Phantom: SAM PHANTOM #2; Type: SAM; Serial: TP-1248
- Measurement SW: DASY4, V4.7 Build 44; Postprocessing SW: SEMCAD, V1.8 Build 171

Ear/Tilt, Ch.190, Ant.Intenna Bat.Standard/Area Scan (51x71x1): Measurement grid:
dx=20mm, dy=20mm

Maximum value of SAR (interpolated) = 0.470 mW/g

Ear/Tilt, Ch.190, Ant.Intenna Bat.Standard/Zoom Scan (5x5x7)/Cube 0: Measurement grid:
dx=8mm, dy=8mm, dz=5mm

Reference Value = 20.4 V/m; Power Drift = -0.007 dB

Peak SAR (extrapolated) = 0.587 W/kg

SAR(1 g) = 0.440 mW/g

Maximum value of SAR (measured) = 0.466 mW/g



0 dB = 0.466mW/g

SAMSUNG FCC ID : A3LSGHT329 835MHz --GSM850 Head SAR

DUT: SGH-T329; Serial: FD-236-J

Program Name: SGH-T329 GSM850 Left(Job No. : FD-236)

Procedure Name: Cheek/Touch, Ch.251, Ant.Intenna, Bat.Standard with BT ON

Meas. Ambient Temp(celsius)-22.1,Tissue Temp(celsius)-21.6 ;Test Date-13/Dec/2006

Communication System: GSM850; Frequency: 848.8 MHz;Duty Cycle: 1:8.3

Medium parameters used: $f = 848.8$ MHz; $\sigma = 0.9$ mho/m; $\epsilon_r = 40.4$; $\rho = 1000$ kg/m³

Phantom section: Left Section

DASY4 Configuration:

- Probe: EX3DV4 - SN3537; ConvF(9.48, 9.48, 9.48); Calibrated: 2006-11-23
- Sensor-Surface: 4mm (Mechanical Surface Detection)
- Electronics: DAE4 Sn686; Calibrated: 2006-11-20
- Phantom: SAM PHANTOM #2; Type: SAM; Serial: TP-1248
- Measurement SW: DASY4, V4.7 Build 44; Postprocessing SW: SEMCAD, V1.8 Build 171

Cheek/Touch, Ch.251, Ant.Intenna, Bat.Standard/Area Scan (51x71x1): Measurement grid: dx=20mm, dy=20mm

Maximum value of SAR (interpolated) = 1.35 mW/g

Cheek/Touch, Ch.251, Ant.Intenna, Bat.Standard/Zoom Scan (5x5x7)/Cube 0:

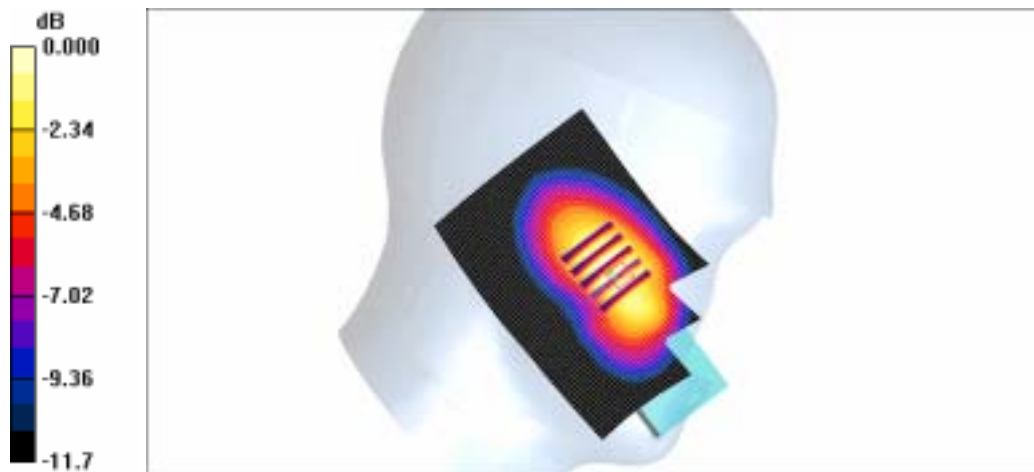
Measurement grid: dx=8mm, dy=8mm, dz=5mm

Reference Value = 34.2 V/m; Power Drift = -0.056 dB

Peak SAR (extrapolated) = 1.99 W/kg

SAR(1 g) = 1.3 mW/g

Maximum value of SAR (measured) = 1.38 mW/g



0 dB = 1.38mW/g

SAMSUNG FCC ID : A3LSGHT329 835MHz --GSM850 Head SAR

DUT: SGH-T329; Serial: FD-236-J

Program Name: SGH-T329 GSM850 Left(Job No. : FD-236)

Procedure Name: Ear/Tilt, Ch.190, Ant.Intenna, Bat.Standard

Meas. Ambient Temp(celsius)-22.1,Tissue Temp(celsius)-21.6 ;Test Date-13/Dec/2006

Communication System: GSM850; Frequency: 836.6 MHz;Duty Cycle: 1:8.3

Medium parameters used: $f = 836.6$ MHz; $\sigma = 0.9$ mho/m; $\epsilon_r = 40.4$; $\rho = 1000$ kg/m³

Phantom section: Left Section

DASY4 Configuration:

- Probe: EX3DV4 - SN3537; ConvF(9.48, 9.48, 9.48); Calibrated: 2006-11-23
- Sensor-Surface: 4mm (Mechanical Surface Detection)
- Electronics: DAE4 Sn686; Calibrated: 2006-11-20
- Phantom: SAM PHANTOM #2; Type: SAM; Serial: TP-1248
- Measurement SW: DASY4, V4.7 Build 44; Postprocessing SW: SEMCAD, V1.8 Build 171

Ear/Tilt, Ch.190, Ant.Intenna, Bat.Standard/Area Scan (51x71x1): Measurement grid:
dx=20mm, dy=20mm

Maximum value of SAR (interpolated) = 0.410 mW/g

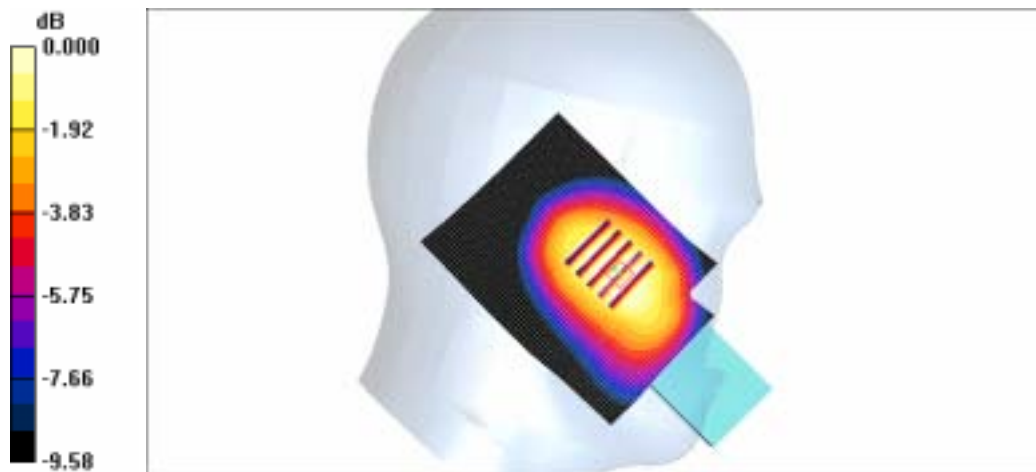
Ear/Tilt, Ch.190, Ant.Intenna, Bat.Standard/Zoom Scan (5x5x7)/Cube 0: Measurement grid: dx=8mm, dy=8mm, dz=5mm

Reference Value = 20.0 V/m; Power Drift = -0.032 dB

Peak SAR (extrapolated) = 0.517 W/kg

SAR(1 g) = 0.390 mW/g

Maximum value of SAR (measured) = 0.411 mW/g



0 dB = 0.411mW/g

SAMSUNG FCC ID : A3LSGHT329 835MHz GPRS850 Body SAR

DUT: SGH-T329(Body); Serial: FD-236-J

Program Name: SGH-T329 GSM850 Body (Job No. : FD-236)

Procedure Name: Body, Ch.251, Ant.Intenna, Bat.Standard

Meas. Ambient Temp(celsius)-22.0,Tissue Temp(celsius)-21.7 ;Test Date-13/Dec/2006

Communication System: GSM 850 (GPRS); Frequency: 848.8 MHz;Duty Cycle: 1:4.15

Medium parameters used: $f = 848.8$ MHz; $\sigma = 0.99$ mho/m; $\epsilon_r = 54.6$; $\rho = 1000$ kg/m³

Phantom section: Flat Section

DASY4 Configuration:

- Probe: EX3DV4 - SN3537; ConvF(9.78, 9.78, 9.78); Calibrated: 2006-11-23
- Sensor-Surface: 4mm (Mechanical Surface Detection)
- Electronics: DAE4 Sn686; Calibrated: 2006-11-20
- Phantom: SAM PHANTOM #1; Type: SAM; Serial: TP-1247
- Measurement SW: DASY4, V4.7 Build 44; Postprocessing SW: SEMCAD, V1.8 Build 171

Body, Ch.251, Ant.Intenna, Bat.Standard/Area Scan (51x71x1): Measurement grid:

$dx=20$ mm, $dy=20$ mm

Maximum value of SAR (interpolated) = 0.267 mW/g

Body, Ch.251, Ant.Intenna, Bat.Standard/Zoom Scan (5x5x7)/Cube 0: Measurement grid:

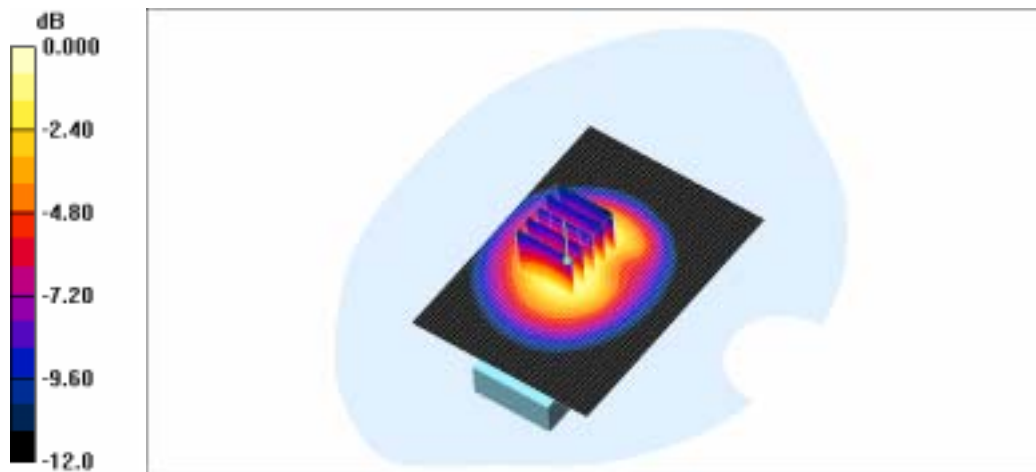
$dx=8$ mm, $dy=8$ mm, $dz=5$ mm

Reference Value = 13.0 V/m; Power Drift = -0.104 dB

Peak SAR (extrapolated) = 0.363 W/kg

SAR(1 g) = 0.243 mW/g

Maximum value of SAR (measured) = 0.263 mW/g



0 dB = 0.263mW/g

SAMSUNG FCC ID : A3LSGHT329 1900MHz - -GSM1900 Head SAR

DUT: SGH-T329; Serial: FD-236-J

Program Name: SGH-T329 GSM1900 Right (Job No. : FD-236)

Procedure Name: Cheek/Touch, Ch.512, Ant.Intenna, Bat.Standard with BT ON

Meas. Ambient Temp(celsius)-21.8,Tissue Temp(celsius)-21.5 ;Test Date-12/Dec/2006

Communication System: GSM 1900; Frequency: 1850.2 MHz;Duty Cycle: 1:8.3

Medium parameters used: $f = 1850.2$ MHz; $\sigma = 1.41$ mho/m; $\epsilon_r = 39.6$; $\rho = 1000$ kg/m³

Phantom section: Right Section

DASY4 Configuration:

- Probe: EX3DV4 - SN3537; ConvF(8.32, 8.32, 8.32); Calibrated: 2006-11-23
- Sensor-Surface: 4mm (Mechanical Surface Detection)
- Electronics: DAE4 Sn686; Calibrated: 2006-11-20
- Phantom: SAM PHANTOM #2; Type: SAM; Serial: TP-1248
- Measurement SW: DASY4, V4.7 Build 44; Postprocessing SW: SEMCAD, V1.8 Build 171

Cheek/Touch, Ch.512, Ant.Intenna, Bat.Standard with BT ON/Area Scan (51x71x1):

Measurement grid: dx=20mm, dy=20mm

Maximum value of SAR (interpolated) = 1.26 mW/g

Cheek/Touch, Ch.512, Ant.Intenna, Bat.Standard with BT ON/Zoom Scan (5x5x7)/Cube

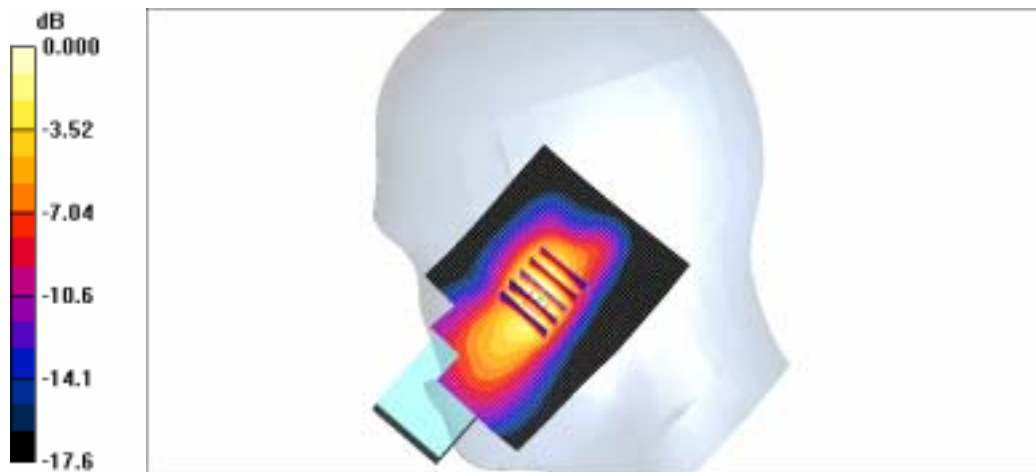
0: Measurement grid: dx=8mm, dy=8mm, dz=5mm

Reference Value = 24.2 V/m; Power Drift = -0.133 dB

Peak SAR (extrapolated) = 1.95 W/kg

SAR(1 g) = 1.21 mW/g

Maximum value of SAR (measured) = 1.34 mW/g



0 dB = 1.34mW/g

SAMSUNG FCC ID : A3LSGHT329 1900MHz --GSM1900 Head SAR

DUT: SGH-T329; Serial: FD-236-J

Program Name: SGH-T329 GSM1900 Right (Job No. : FD-236)

Procedure Name: Ear/Tilt, Ch.661, Ant.Intenna, Bat.Standard

Meas. Ambient Temp(celsius)-21.8,Tissue Temp(celsius)-21.5 ;Test Date-12/Dec/2006

Communication System: GSM 1900; Frequency: 1880 MHz;Duty Cycle: 1:8.3

Medium parameters used: $f = 1880$ MHz; $\sigma = 1.41$ mho/m; $\epsilon_r = 39.6$; $\rho = 1000$ kg/m³

Phantom section: Right Section

DASY4 Configuration:

- Probe: EX3DV4 - SN3537; ConvF(8.32, 8.32, 8.32); Calibrated: 2006-11-23
- Sensor-Surface: 4mm (Mechanical Surface Detection)
- Electronics: DAE4 Sn686; Calibrated: 2006-11-20
- Phantom: SAM PHANTOM #2; Type: SAM; Serial: TP-1248
- Measurement SW: DASY4, V4.7 Build 44; Postprocessing SW: SEMCAD, V1.8 Build 171

Ear/Tilt, Ch.661, Ant.Intenna, Bat.Standard/Area Scan (51x71x1): Measurement grid:
dx=20mm, dy=20mm

Maximum value of SAR (interpolated) = 0.226 mW/g

Ear/Tilt, Ch.661, Ant.Intenna, Bat.Standard/Zoom Scan (5x5x7)/Cube 0: Measurement grid: dx=8mm, dy=8mm, dz=5mm

Reference Value = 7.73 V/m; Power Drift = 0.059 dB

Peak SAR (extrapolated) = 0.297 W/kg

SAR(1 g) = 0.199 mW/g

Maximum value of SAR (measured) = 0.211 mW/g



0 dB = 0.211mW/g

SAMSUNG FCC ID : A3LSGHT329 1900MHz - -GSM1900 Head SAR

DUT: SGH-T329; Serial: FD-236-J

Program Name: SGH-T329 GSM1900 Left (Job No. : FD-236)

Procedure Name: Cheek/Touch, Ch.512, Ant.Intenna, Bat.Standard

Meas. Ambient Temp(celsius)-21.8,Tissue Temp(celsius)-21.5 ;Test Date-12/Dec/2006

Communication System: GSM 1900; Frequency: 1850.2 MHz;Duty Cycle: 1:8.3

Medium parameters used: $f = 1850.2$ MHz; $\sigma = 1.41$ mho/m; $\epsilon_r = 39.6$; $\rho = 1000$ kg/m³

Phantom section: Left Section

DASY4 Configuration:

- Probe: EX3DV4 - SN3537; ConvF(8.32, 8.32, 8.32); Calibrated: 2006-11-23
- Sensor-Surface: 4mm (Mechanical Surface Detection)
- Electronics: DAE4 Sn686; Calibrated: 2006-11-20
- Phantom: SAM PHANTOM #2; Type: SAM; Serial: TP-1248
- Measurement SW: DASY4, V4.7 Build 44; Postprocessing SW: SEMCAD, V1.8 Build 171

Cheek/Touch, Ch.512, Ant.Intenna, Bat.Standard/Area Scan (51x71x1): Measurement grid: dx=20mm, dy=20mm

Maximum value of SAR (interpolated) = 1.30 mW/g

Cheek/Touch, Ch.512, Ant.Intenna, Bat.Standard/Zoom Scan (5x5x7)/Cube 0:

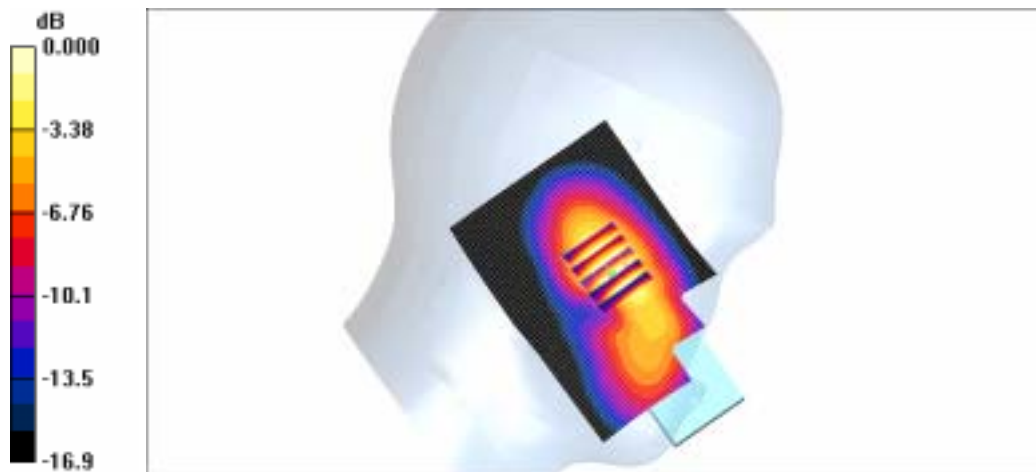
Measurement grid: dx=8mm, dy=8mm, dz=5mm

Reference Value = 25.7 V/m; Power Drift = -0.011 dB

Peak SAR (extrapolated) = 1.84 W/kg

SAR(1 g) = 1.16 mW/g

Maximum value of SAR (measured) = 1.22 mW/g



0 dB = 1.22mW/g

SAMSUNG FCC ID : A3LSGHT329 1900MHz - -GSM1900 Head SAR

DUT: SGH-T329; Serial: FD-236-J

Program Name: SGH-T329 GSM1900 Left (Job No. : FD-236)

Procedure Name: Ear/Tilt, Ch.661, Ant.Intenna, Bat.Standard

Meas. Ambient Temp(celsius)-21.8,Tissue Temp(celsius)-21.5 ;Test Date-12/Dec/2006

Communication System: GSM 1900; Frequency: 1880 MHz;Duty Cycle: 1:8.3

Medium parameters used: $f = 1880$ MHz; $\sigma = 1.41$ mho/m; $\epsilon_r = 39.6$; $\rho = 1000$ kg/m³

Phantom section: Left Section

DASY4 Configuration:

- Probe: EX3DV4 - SN3537; ConvF(8.32, 8.32, 8.32); Calibrated: 2006-11-23
- Sensor-Surface: 4mm (Mechanical Surface Detection)
- Electronics: DAE4 Sn686; Calibrated: 2006-11-20
- Phantom: SAM PHANTOM #2; Type: SAM; Serial: TP-1248
- Measurement SW: DASY4, V4.7 Build 44; Postprocessing SW: SEMCAD, V1.8 Build 171

Ear/Tilt, Ch.661, Ant.Intenna, Bat.Standard/Area Scan (51x71x1): Measurement grid:
dx=20mm, dy=20mm

Maximum value of SAR (interpolated) = 0.240 mW/g

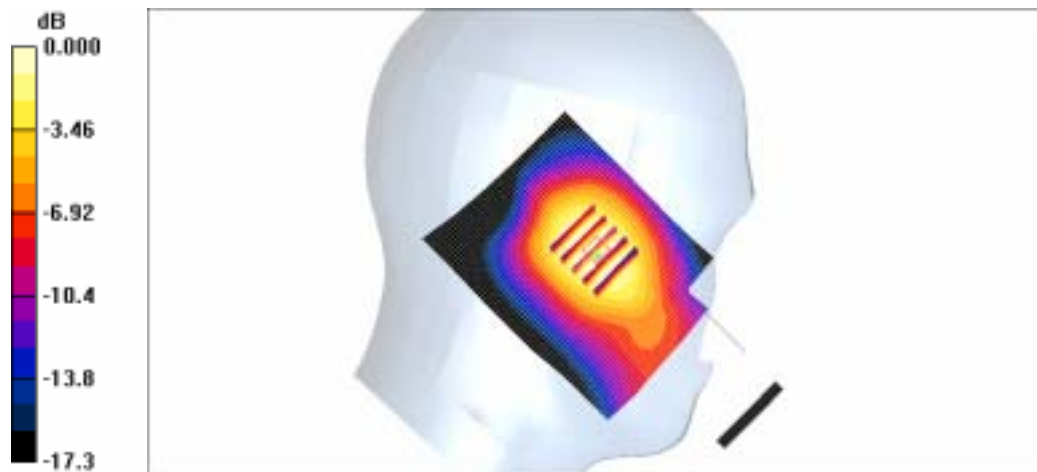
Ear/Tilt, Ch.661, Ant.Intenna, Bat.Standard/Zoom Scan (5x5x7)/Cube 0: Measurement grid: dx=8mm, dy=8mm, dz=5mm

Reference Value = 8.33 V/m; Power Drift = 0.070 dB

Peak SAR (extrapolated) = 0.325 W/kg

SAR(1 g) = 0.220 mW/g

Maximum value of SAR (measured) = 0.237 mW/g



0 dB = 0.237mW/g

SAMSUNG FCC ID : A3LSGHT329 1900MHz GPRS1900 Body SAR

DUT: SGH-T329(Body); Serial: FD-236-J

Program Name: SGH-T329 GPRS1900 Body (Job No. : FD-236)

Procedure Name: Body, Ch.810, Ant.Intenna, Bat.Standard

Meas. Ambient Temp(celsius)-22.1,Tissue Temp(celsius)-21.6 ;Test Date-12/Dec/2006

Communication System: GSM1900 GPRS; Frequency: 1909.8 MHz;Duty Cycle: 1:4.15

Medium parameters used: $f = 1909.8$ MHz; $\sigma = 1.53$ mho/m; $\epsilon_r = 53.1$; $\rho = 1000$ kg/m³

Phantom section: Flat Section

DASY4 Configuration:

- Probe: EX3DV4 - SN3537; ConvF(7.86, 7.86, 7.86); Calibrated: 2006-11-23
- Sensor-Surface: 4mm (Mechanical Surface Detection)
- Electronics: DAE4 Sn686; Calibrated: 2006-11-20
- Phantom: SAM PHANTOM #1; Type: SAM; Serial: TP-1247
- Measurement SW: DASY4, V4.7 Build 44; Postprocessing SW: SEMCAD, V1.8 Build 171

Body, Ch.810, Ant.Intenna, Bat.Standard/Area Scan (51x71x1): Measurement grid:

$dx=20$ mm, $dy=20$ mm

Maximum value of SAR (interpolated) = 0.293 mW/g

Body, Ch.810, Ant.Intenna, Bat.Standard/Zoom Scan (5x5x7)/Cube 0: Measurement grid:

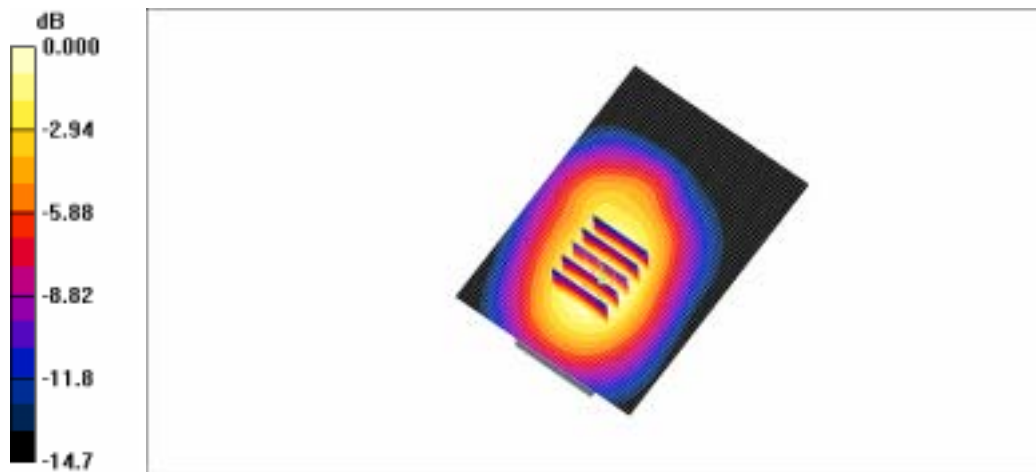
$dx=8$ mm, $dy=8$ mm, $dz=5$ mm

Reference Value = 8.18 V/m; Power Drift = -0.183 dB

Peak SAR (extrapolated) = 0.363 W/kg

SAR(1 g) = 0.241 mW/g

Maximum value of SAR (measured) = 0.256 mW/g



0 dB = 0.256mW/g

SAMSUNG FCC ID : A3LSCHT329 835MHz GSM850 Head SAR

DUT: SGH-T329; Serial: FD-236-J

Program Name: SGH-T329 GSM850 Right(Job No. : FD-236)

Procedure Name: Cheek/Touch, Ch.190, Ant.Intenna, Bat.Standard

Meas. Ambient Temp(celsius)-22.1,Tissue Temp(celsius)-21.6 ;Test Date-13/Dec/2006

Communication System: GSM850; Frequency: 836.6 MHz;Duty Cycle: 1:8.3

Medium parameters used: $f = 836.6$ MHz; $\sigma = 0.9$ mho/m; $\epsilon_r = 40.4$; $\rho = 1000$ kg/m³

Phantom section: Right Section

DASY4 Configuration:

- Probe: EX3DV4 - SN3537; ConvF(9.48, 9.48, 9.48); Calibrated: 2006-11-23
- Sensor-Surface: 4mm (Mechanical Surface Detection)
- Electronics: DAE4 Sn686; Calibrated: 2006-11-20
- Phantom: SAM PHANTOM #2; Type: SAM; Serial: TP-1248
- Measurement SW: DASY4, V4.7 Build 44; Postprocessing SW: SEMCAD, V1.8 Build 171

Cheek/Touch, Ch.190, Ant.Intenna, Bat.Standard/Area Scan (51x71x1): Measurement grid: dx=20mm, dy=20mm

Maximum value of SAR (interpolated) = 1.42 mW/g

Cheek/Touch, Ch.190, Ant.Intenna, Bat.Standard/Zoom Scan (5x5x7)/Cube 0:

Measurement grid: dx=8mm, dy=8mm, dz=5mm

Reference Value = 33.8 V/m; Power Drift = -0.107 dB

Peak SAR (extrapolated) = 2.15 W/kg

SAR(1 g) = 1.38 mW/g

Maximum value of SAR (measured) = 1.49 mW/g



SAMSUNG FCC ID : A3LSGHT329 835MHz – GPRS850 Body SAR

DUT: SGH-T329(Body); Serial: FD-236-J

Program Name: SGH-T329 GSM850 Body (Job No. : FD-236)

Procedure Name: Body, Ch.251, Ant.Intenna, Bat.Standard

Meas. Ambient Temp(celsius)-22.0,Tissue Temp(celsius)-21.7 ;Test Date-13/Dec/2006

Communication System: GSM 850 (GPRS); Frequency: 848.8 MHz;Duty Cycle: 1:4.15

Medium parameters used: $f = 848.8$ MHz; $\sigma = 0.99$ mho/m; $\epsilon_r = 54.6$; $\rho = 1000$ kg/m³

Phantom section: Flat Section

DASY4 Configuration:

- Probe: EX3DV4 - SN3537; ConvF(9.78, 9.78, 9.78); Calibrated: 2006-11-23
- Sensor-Surface: 4mm (Mechanical Surface Detection)
- Electronics: DAE4 Sn686; Calibrated: 2006-11-20
- Phantom: SAM PHANTOM #1; Type: SAM; Serial: TP-1247
- Measurement SW: DASY4, V4.7 Build 44; Postprocessing SW: SEMCAD, V1.8 Build 171

Body, Ch.251, Ant.Intenna, Bat.Standard/Area Scan (51x71x1): Measurement grid:

dx=20mm, dy=20mm

Maximum value of SAR (interpolated) = 0.267 mW/g

Body, Ch.251, Ant.Intenna, Bat.Standard/Zoom Scan (5x5x7)/Cube 0: Measurement grid:

dx=8mm, dy=8mm, dz=5mm

Reference Value = 13.0 V/m; Power Drift = -0.104 dB

Peak SAR (extrapolated) = 0.363 W/kg

SAR(1 g) = 0.243 mW/g

Maximum value of SAR (measured) = 0.263 mW/g



SAMSUNG FCC ID : A3LSCHT329 1900MHz GSM1900 Head SAR

DUT: SGH-T329; Serial: FD-236-J

Program Name: SGH-T329 GSM1900 Right (Job No. : FD-236)

Procedure Name: Cheek/Touch, Ch.512, Ant.Intenna, Bat.Standard with BT ON

Meas. Ambient Temp(celsius)-21.8,Tissue Temp(celsius)-21.5 ;Test Date-12/Dec/2006

Communication System: GSM 1900; Frequency: 1850.2 MHz;Duty Cycle: 1:8.3

Medium parameters used: $f = 1850.2$ MHz; $\sigma = 1.41$ mho/m; $\epsilon_r = 39.6$; $\rho = 1000$ kg/m³

Phantom section: Right Section

DASY4 Configuration:

- Probe: EX3DV4 - SN3537; ConvF(8.32, 8.32, 8.32); Calibrated: 2006-11-23
- Sensor-Surface: 4mm (Mechanical Surface Detection)
- Electronics: DAE4 Sn686; Calibrated: 2006-11-20
- Phantom: SAM PHANTOM #2; Type: SAM; Serial: TP-1248
- Measurement SW: DASY4, V4.7 Build 44; Postprocessing SW: SEMCAD, V1.8 Build 171

Cheek/Touch, Ch.512, Ant.Intenna, Bat.Standard with BT ON/Area Scan (51x71x1):

Measurement grid: dx=20mm, dy=20mm

Maximum value of SAR (interpolated) = 1.26 mW/g

Cheek/Touch, Ch.512, Ant.Intenna, Bat.Standard with BT ON/Zoom Scan (5x5x7)/Cube

0: Measurement grid: dx=8mm, dy=8mm, dz=5mm

Reference Value = 24.2 V/m; Power Drift = -0.133 dB

Peak SAR (extrapolated) = 1.95 W/kg

SAR(1 g) = 1.21 mW/g

Maximum value of SAR (measured) = 1.34 mW/g



SAMSUNG FCC ID : A3LSGHT329 1900MHz - - GPRS1900 Body SAR

DUT: SGH-T329(Body); Serial: FD-236-J

Program Name: SGH-T329 GPRS1900 Body (Job No. : FD-236)

Procedure Name: Body, Ch.810, Ant.Intenna, Bat.Standard

Meas. Ambient Temp(celsius)-22.1,Tissue Temp(celsius)-21.6 ;Test Date-12/Dec/2006

Communication System: GSM1900 GPRS; Frequency: 1909.8 MHz;Duty Cycle: 1:4.15

Medium parameters used: $f = 1909.8$ MHz; $\sigma = 1.53$ mho/m; $\epsilon_r = 53.1$; $\rho = 1000$ kg/m³

Phantom section: Flat Section

DASY4 Configuration:

- Probe: EX3DV4 - SN3537; ConvF(7.86, 7.86, 7.86); Calibrated: 2006-11-23
- Sensor-Surface: 4mm (Mechanical Surface Detection)
- Electronics: DAE4 Sn686; Calibrated: 2006-11-20
- Phantom: SAM PHANTOM #1; Type: SAM; Serial: TP-1247
- Measurement SW: DASY4, V4.7 Build 44; Postprocessing SW: SEMCAD, V1.8 Build 171

Body, Ch.810, Ant.Intenna, Bat.Standard/Area Scan (51x71x1): Measurement grid:

dx=20mm, dy=20mm

Maximum value of SAR (interpolated) = 0.293 mW/g

Body, Ch.810, Ant.Intenna, Bat.Standard/Zoom Scan (5x5x7)/Cube 0: Measurement grid:

dx=8mm, dy=8mm, dz=5mm

Reference Value = 8.18 V/m; Power Drift = -0.183 dB

Peak SAR (extrapolated) = 0.363 W/kg

SAR(1 g) = 0.241 mW/g

Maximum value of SAR (measured) = 0.256 mW/g

