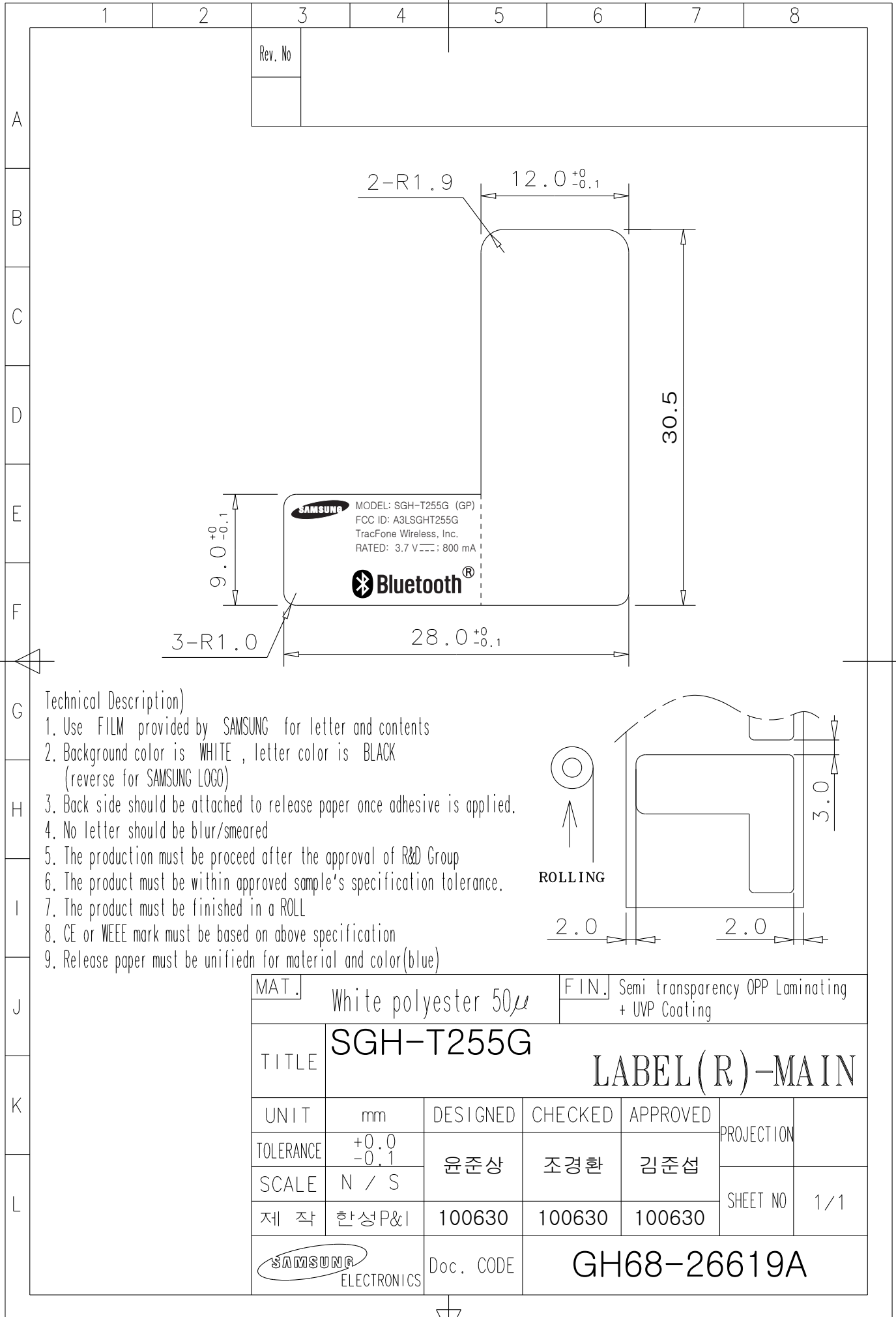


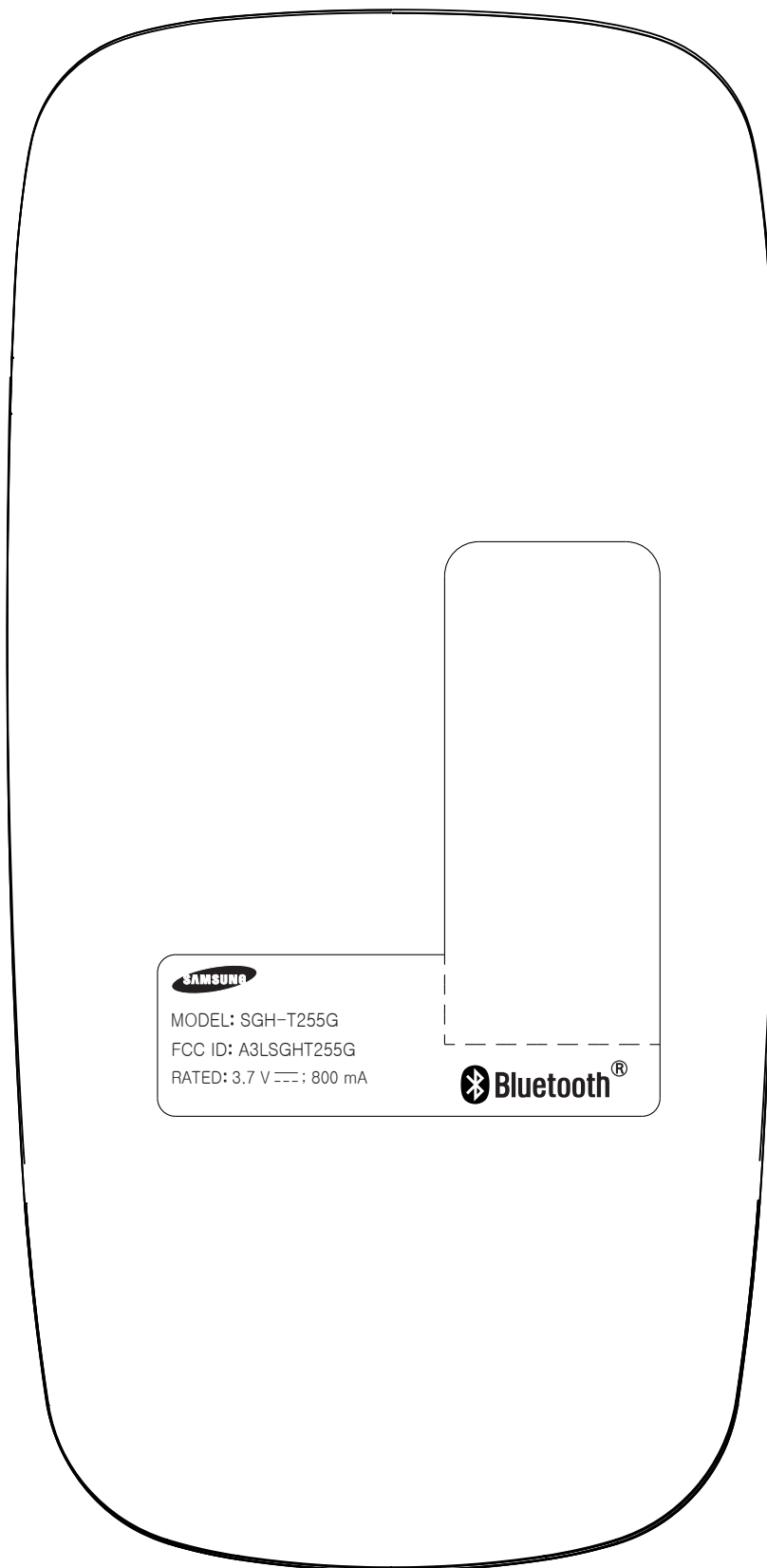
This drawing is property of SEC. Use or copy of this drawing without proper permission from the appropriate technical-document managing department is prohibited.



Technical Description)

1. Use FILM provided by SAMSUNG for letter and contents
2. Background color is WHITE, letter color is BLACK
(reverse for SAMSUNG LOGO)
3. Back side should be attached to release paper once adhesive is applied.
4. No letter should be blur/smeared
5. The production must be proceed after the approval of R&D Group
6. The product must be within approved sample's specification tolerance.
7. The product must be finished in a ROLL
8. CE or WEEE mark must be based on above specification
9. Release paper must be unifiedn for material and color(blue)

MAT.		White polyester 50 μ			FIN.		Semi transparency OPP Laminating + UVP Coating		
TITLE		SGH-T255G			LABEL (R)-MAIN				
UNIT	mm	DESIGNED	CHECKED	APPROVED	PROJECTION				
TOLERANCE	+0.0 -0.1	윤준상	조경환	김준섭					
SCALE	N / S					SHEET NO		1 / 1	
제 작	한성P&I	100630	100630	100630					
SAMSUNG ELECTRONICS		Doc. CODE		GH68-26619A					



The label is placed inside the battery compartment

The FCC ID Label shown will be readily visible at the time of purchase.