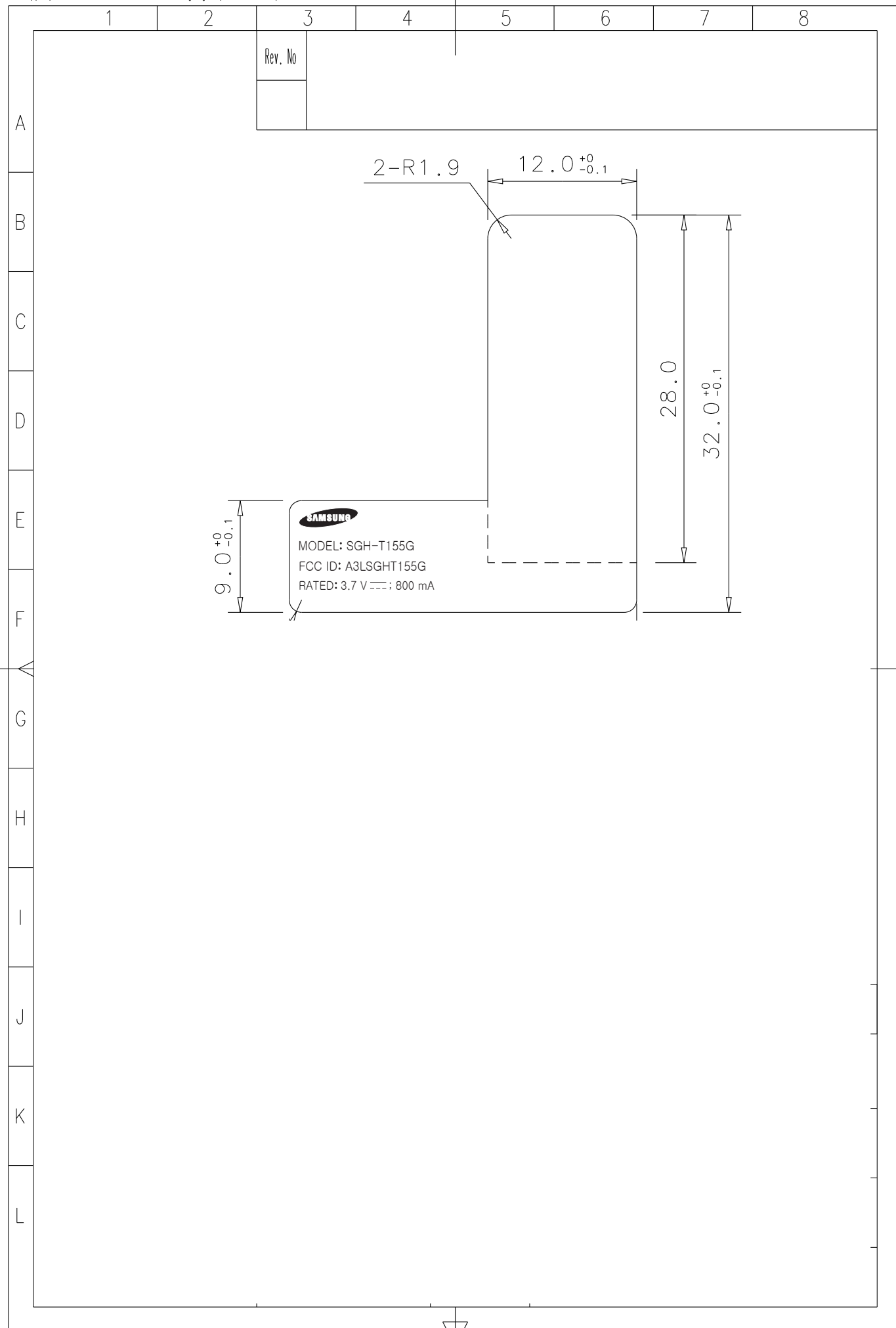
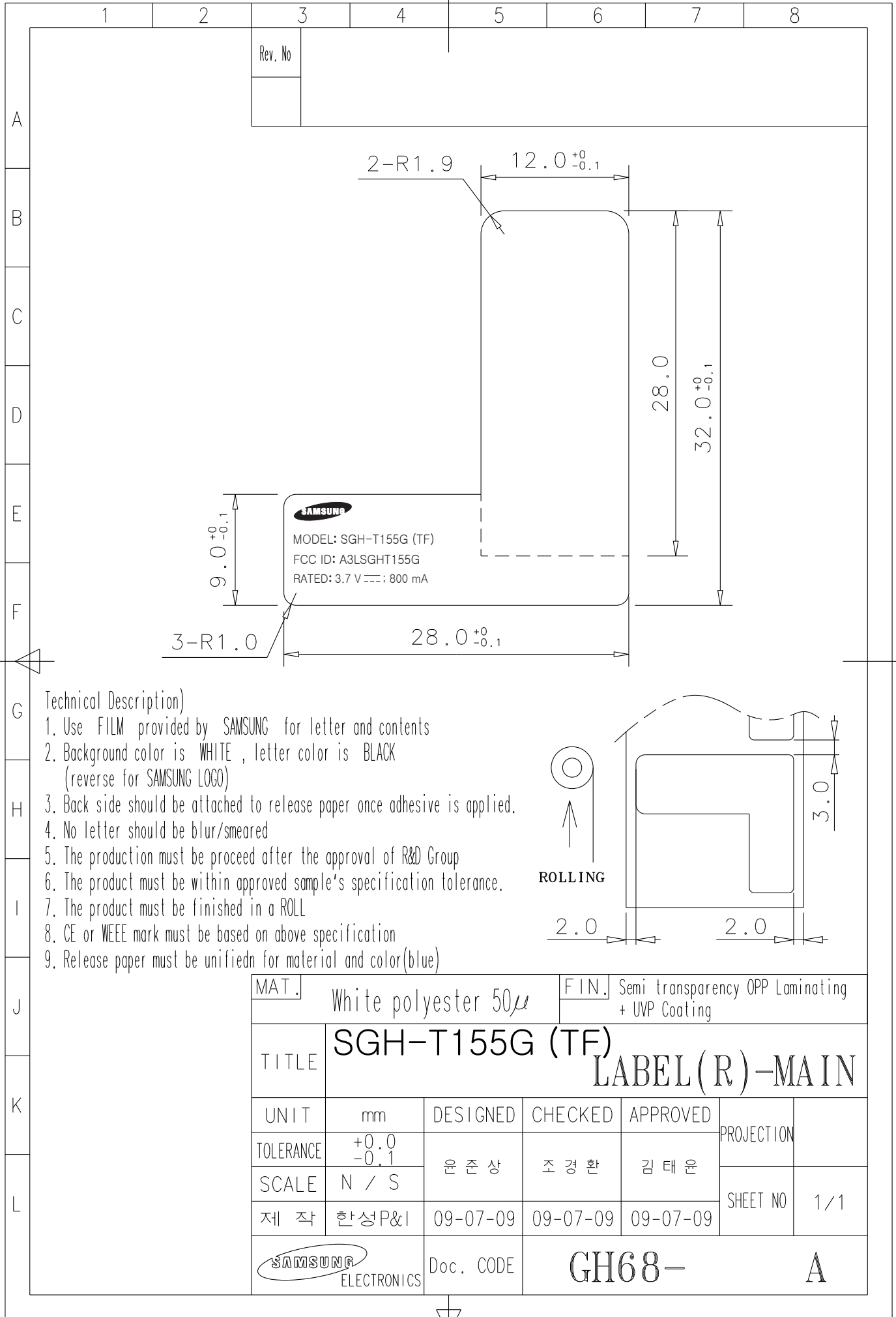


This drawing is property of SEC. Use or copy of this drawing without proper permission from the appropriate technical-document managing department is prohibited.



This drawing is property of SEC. Use or copy of this drawing without proper permission from the appropriate technical-document managing department is prohibited.

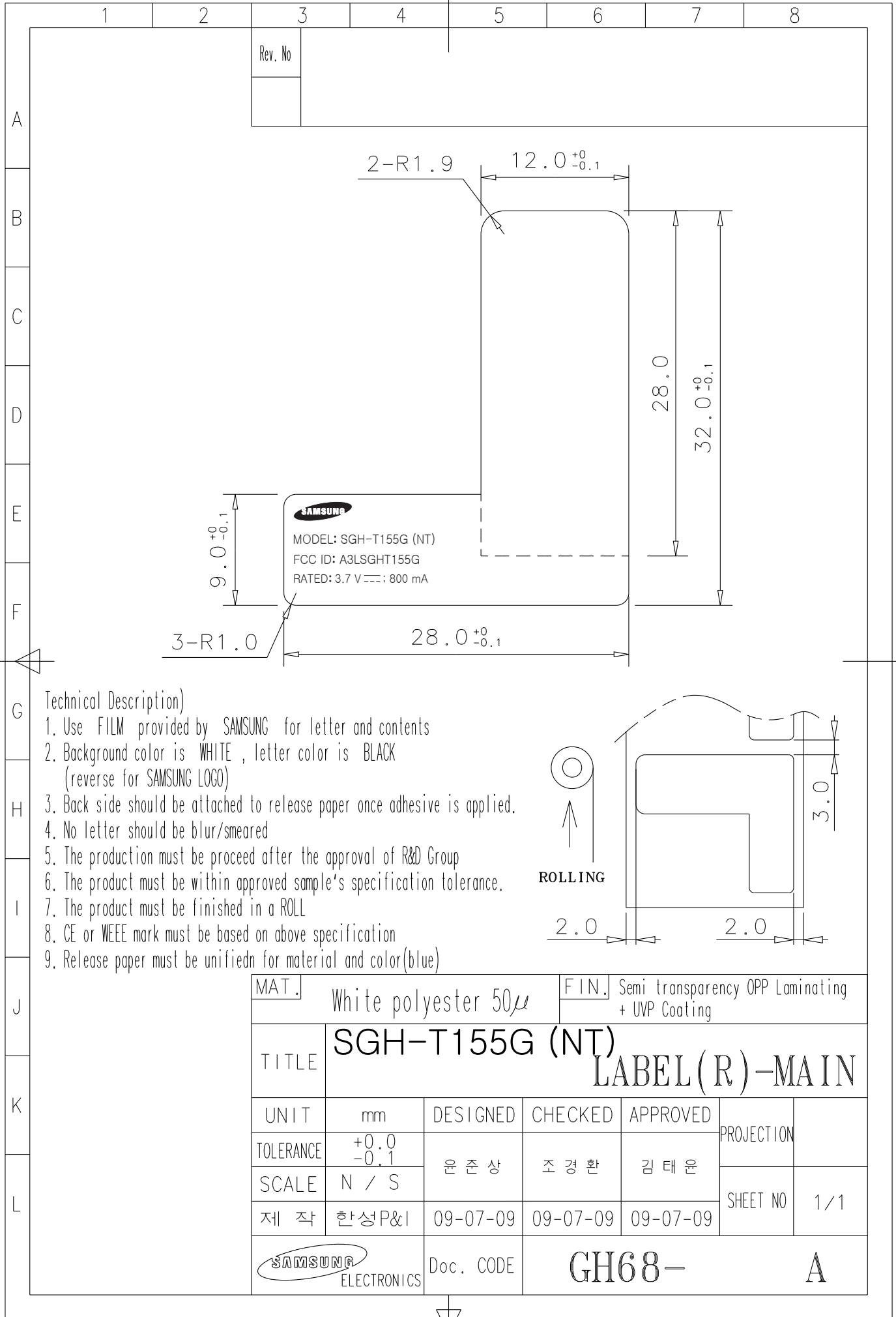


Technical Description)

1. Use FILM provided by SAMSUNG for letter and contents
2. Background color is WHITE, letter color is BLACK (reverse for SAMSUNG LOGO)
3. Back side should be attached to release paper once adhesive is applied.
4. No letter should be blur/smeared
5. The production must be proceed after the approval of R&D Group
6. The product must be within approved sample's specification tolerance.
7. The product must be finished in a ROLL
8. CE or WEEE mark must be based on above specification
9. Release paper must be unifiedn for material and color(blue)

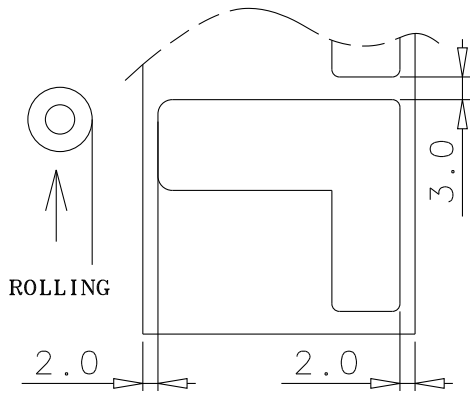
MAT.		White polyester 50μ		FIN.		Semi transparency OPP Laminating + UVP Coating	
TITLE		SGH-T155G (TF) LABEL (R)-MAIN					
UNIT	mm	DESIGNED	CHECKED	APPROVED	PROJECTION		
TOLERANCE	+0.0 -0.1	윤준상	조경환	김태운	SHEET NO		1/1
SCALE	N / S						
제 작	한성P&I	09-07-09	09-07-09	09-07-09			
SAMSUNG ELECTRONICS		Doc. CODE	GH68-				A

This drawing is property of SEC. Use or copy of this drawing without proper permission from the appropriate technical-document managing department is prohibited.



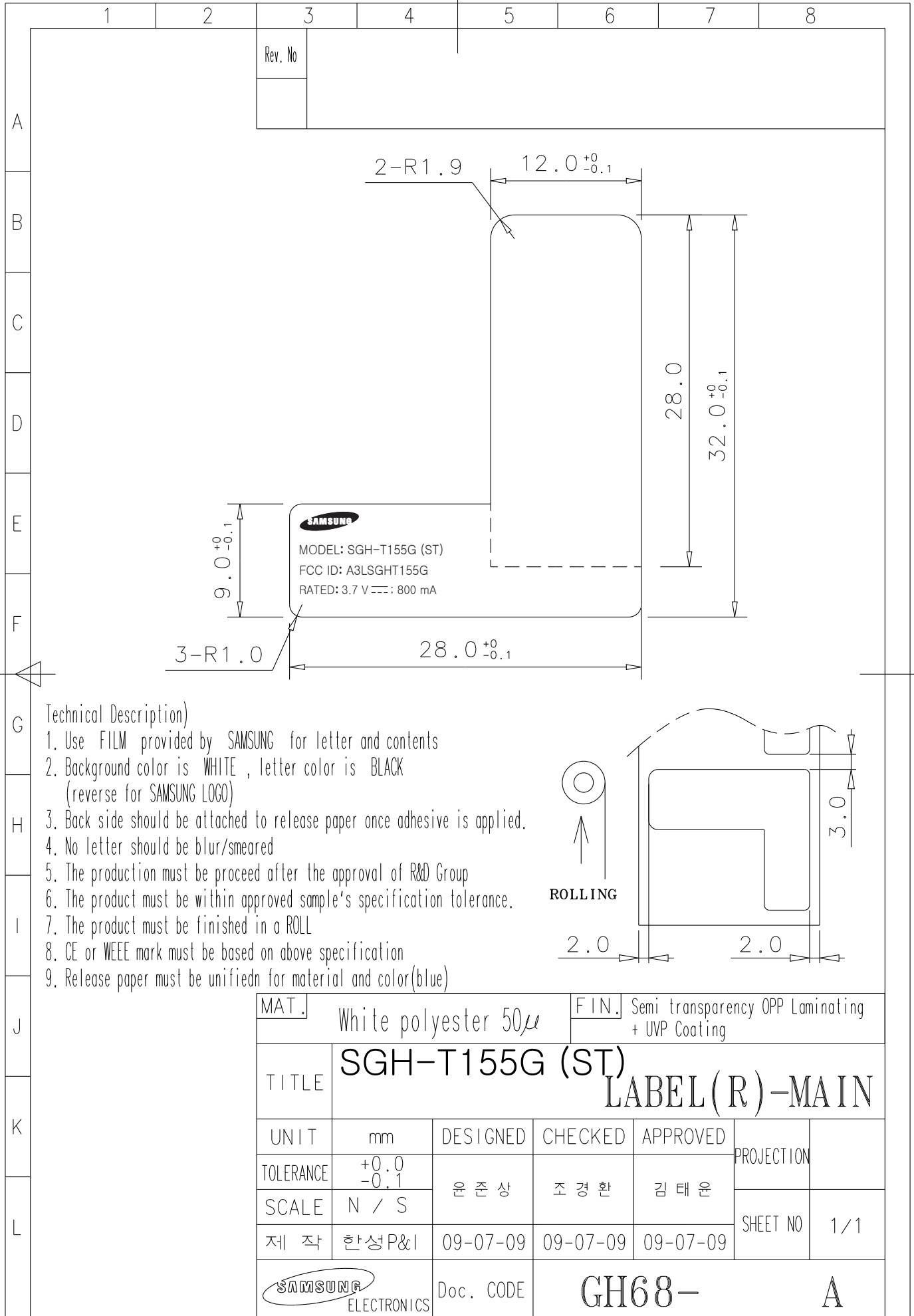
Technical Description)

1. Use FILM provided by SAMSUNG for letter and contents
2. Background color is WHITE, letter color is BLACK
(reverse for SAMSUNG LOGO)
3. Back side should be attached to release paper once adhesive is applied.
4. No letter should be blur/smeared
5. The production must be proceed after the approval of R&D Group
6. The product must be within approved sample's specification tolerance.
7. The product must be finished in a ROLL
8. CE or WEEE mark must be based on above specification
9. Release paper must be unifiedn for material and color(blue)

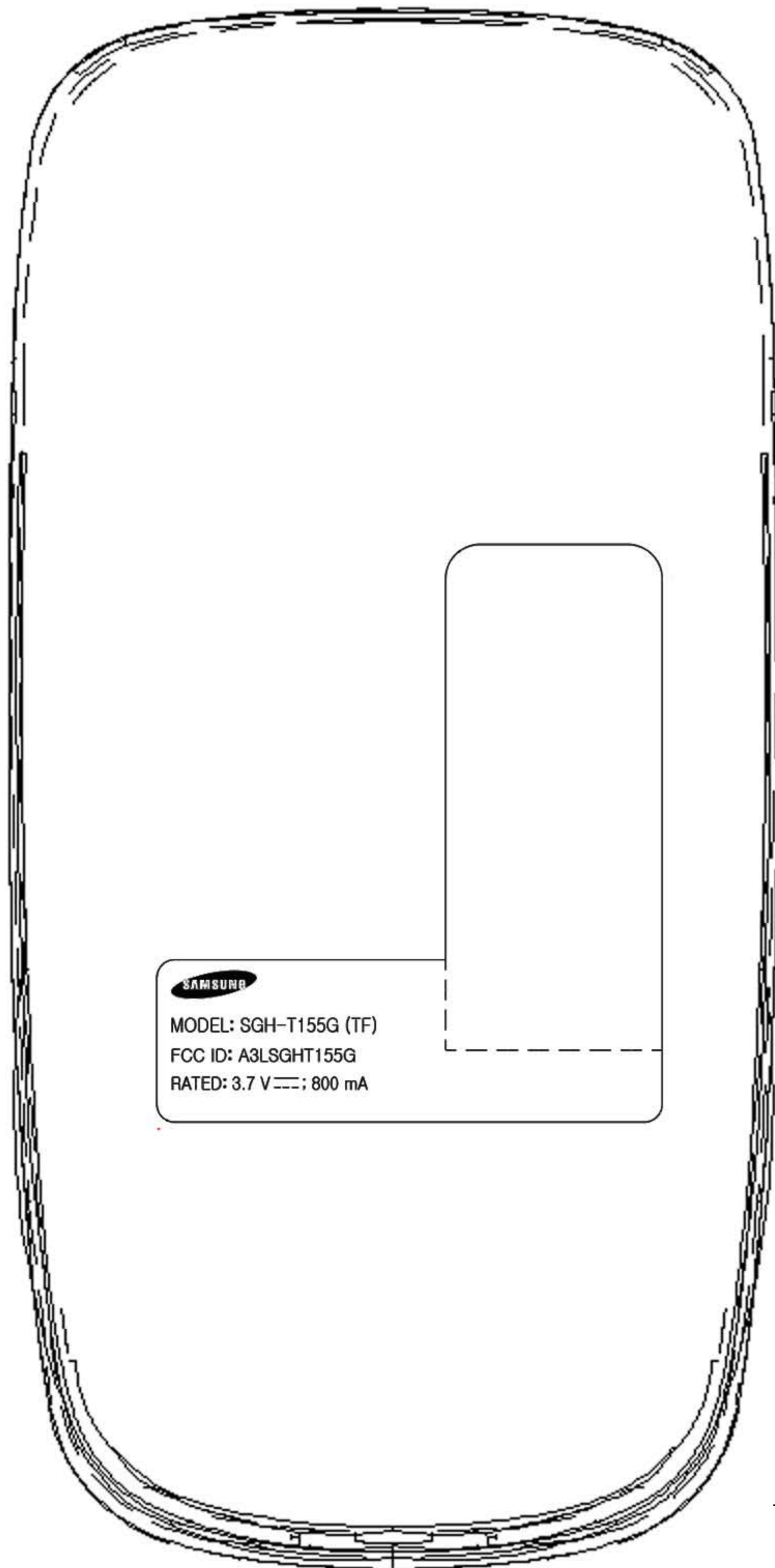



MAT.		White polyester 50μ		FIN.		Semi transparency OPP Laminating + UVP Coating	
TITLE		SGH-T155G (NT) LABEL (R)-MAIN					
UNIT	mm	DESIGNED	CHECKED	APPROVED	PROJECTION		
TOLERANCE	+0.0 -0.1	윤준상	조경환	김태운	SHEET NO		1/1
SCALE	N / S						
제 작	한성P&I	09-07-09	09-07-09	09-07-09			
SAMSUNG ELECTRONICS		Doc. CODE	GH68-		A		

This drawing is property of SEC. Use or copy of this drawing without proper permission from the appropriate technical-document managing department is prohibited.



MAT.		White polyester 50 μ		FIN.		Semi transparency OPP Laminating + UVP Coating	
TITLE		SGH-T155G (ST) LABEL (R)-MAIN					
UNIT	mm	DESIGNED	CHECKED	APPROVED	PROJECTION		
TOLERANCE	+0.0 -0.1	윤준상	조경환	김태운			
SCALE	N / S					SHEET NO	1 / 1
제 작	한성P&I	09-07-09	09-07-09	09-07-09			
		Doc. CODE	GH68-		A		



SAMSUNG
MODEL: SGH-T155G (TF)
FCC ID: A3LSGHT155G
RATED: 3.7 V ; 800 mA

The label is placed
inside the battery compartment

The FCC ID Label shown will be readily visible at the time of purchase.