

SAMSUNG FCC ID : A3LSGHS400I 1900MHz GSM1900 Validation

DUT: Dipole 1900 MHz; Serial: 5d023

Program Name: 1900 Dipole Validation 2005.10.26

Procedure Name: 1900MHz @250mW

Procedure Notes:

Communication System: CW; Frequency: 1900 MHz; Duty Cycle: 1:1

Medium parameters used: $f = 1900$ MHz; $\sigma = 1.39$ mho/m; $\epsilon_r = 39.1$; $\rho = 1000$ kg/m³

Phantom section: Flat Section

DASY4 Configuration:

- Probe: EX3DV4 - SN3537; ConvF(8.29, 8.29, 8.29); Calibrated: 2004-12-15
- Sensor-Surface: 4mm (Mechanical Surface Detection)
- Electronics: DAE3 Sn468; Calibrated: 2004-12-07
- Phantom: SAM 1800/1900 MHz; Type: SAM; Serial: TP-1248
- Measurement SW: DASY4, V4.6 Build 19; Postprocessing SW: SEMCAD, V1.8 Build 159

1900MHz @250mW/Zoom Scan (5x5x7)/Cube 0: Measurement grid: dx=8mm, dy=8mm, dz=5mm

Reference Value = 89.7 V/m; Power Drift = -0.062 dB

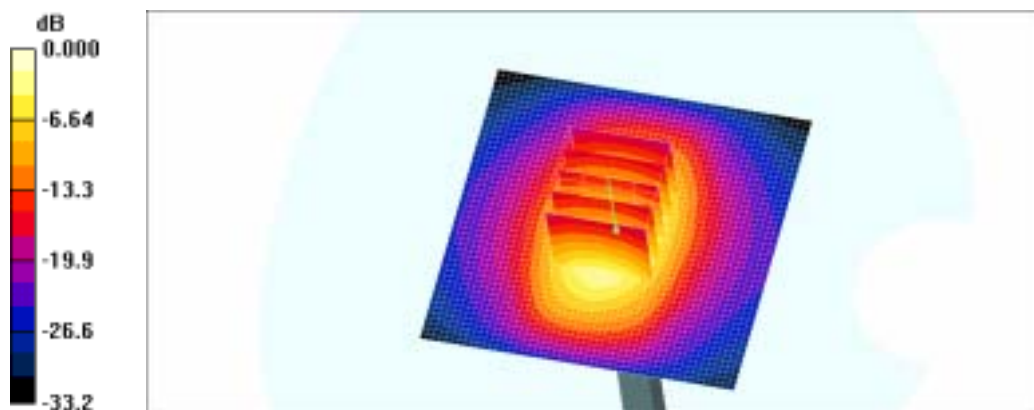
Peak SAR (extrapolated) = 18.5 W/kg

SAR(1 g) = 9.87 mW/g

Maximum value of SAR (measured) = 11.0 mW/g

1900MHz @250mW/Area Scan (51x51x1): Measurement grid: dx=20mm, dy=20mm

Maximum value of SAR (interpolated) = 14.9 mW/g



0 dB = 14.9mW/g