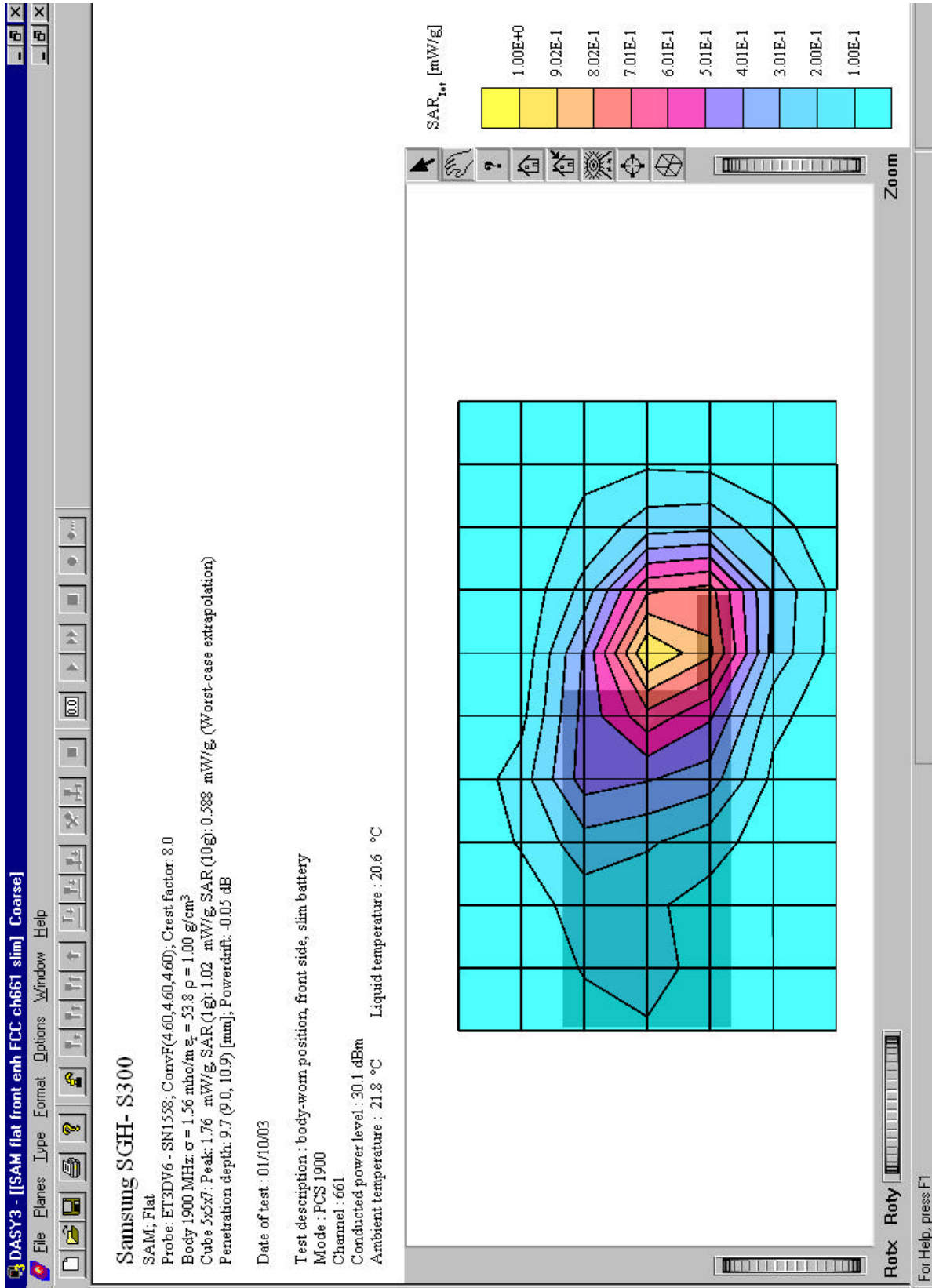
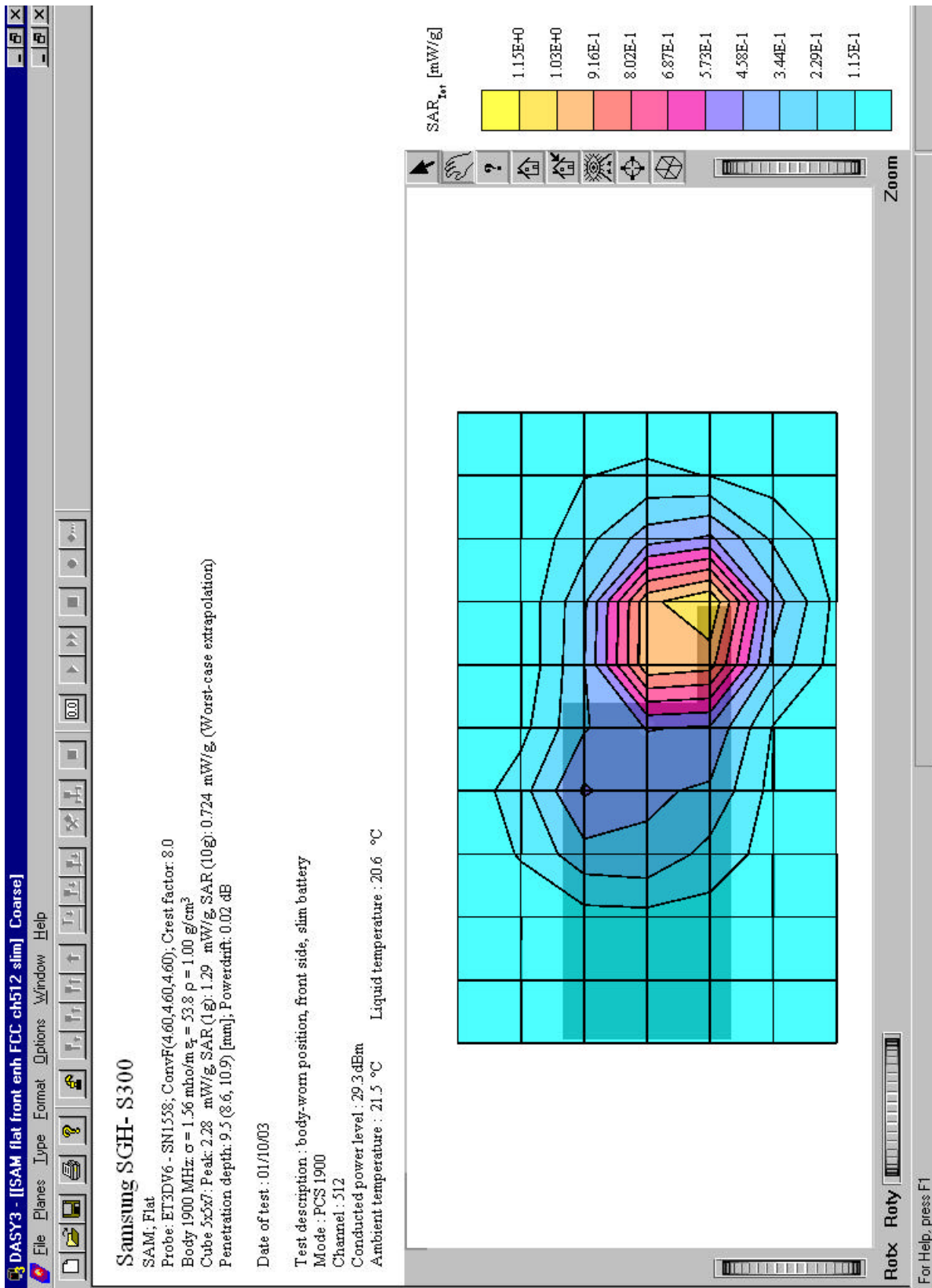
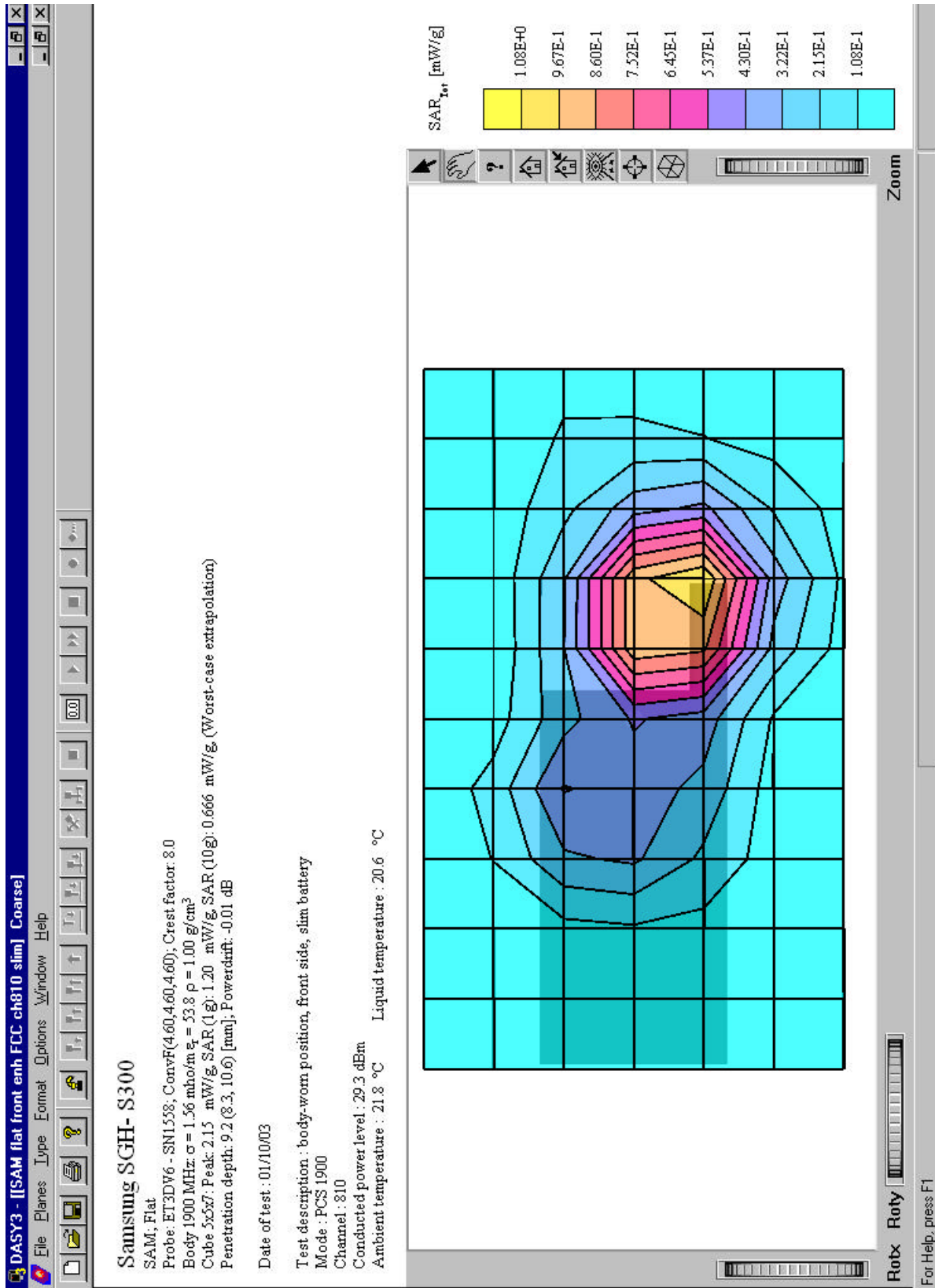
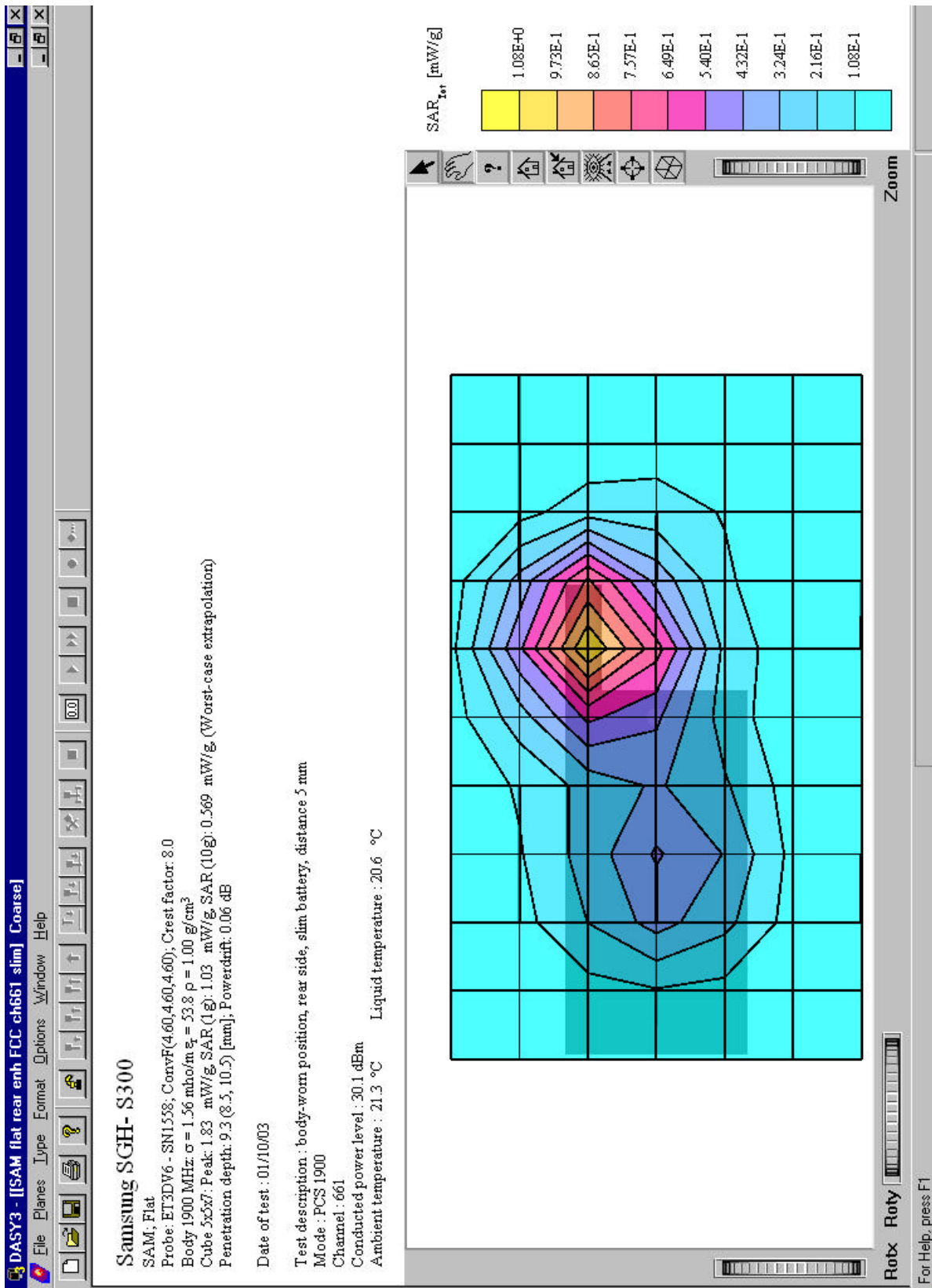


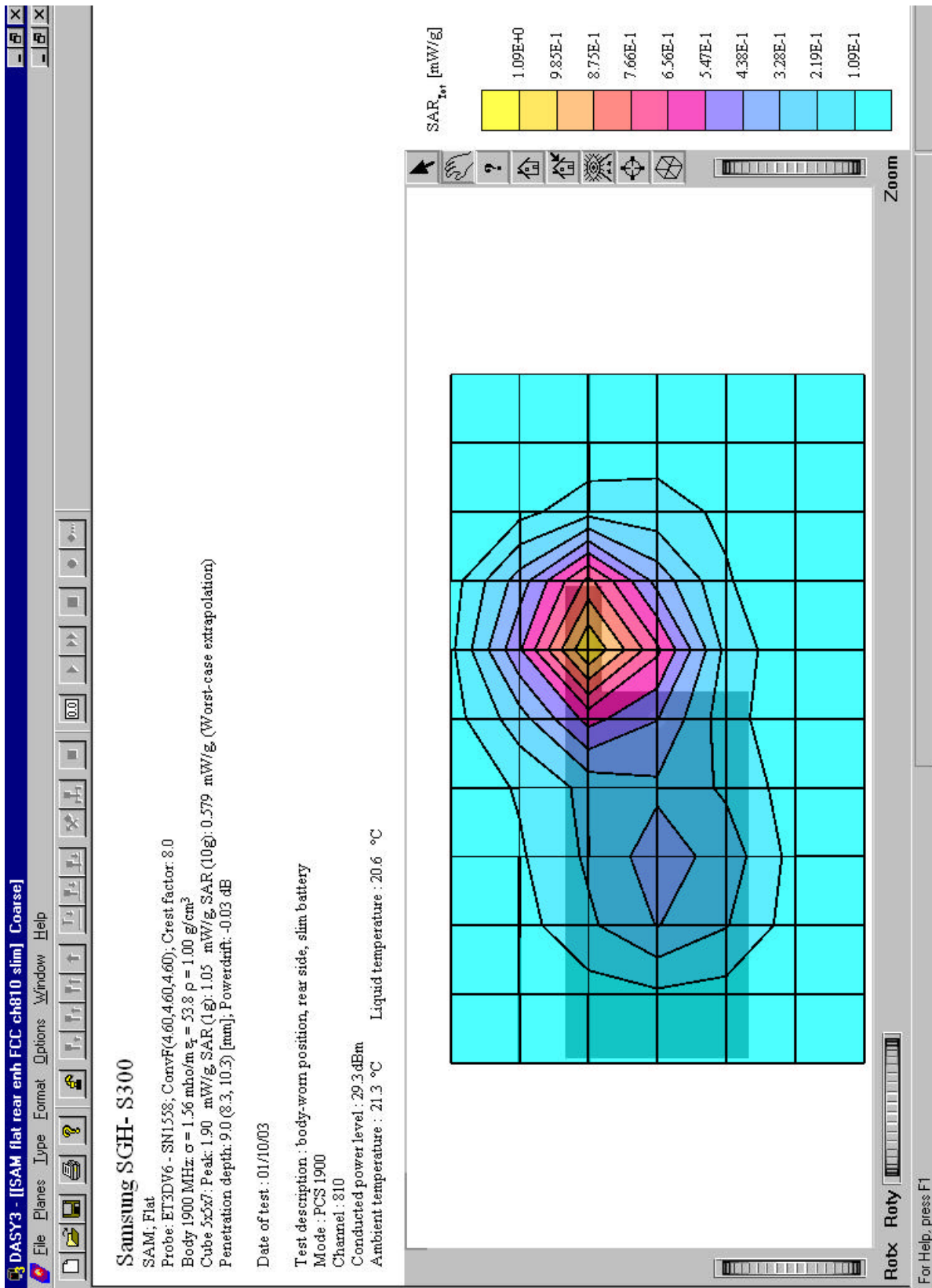
Annex 2.4 Slim battery , body-worn positions

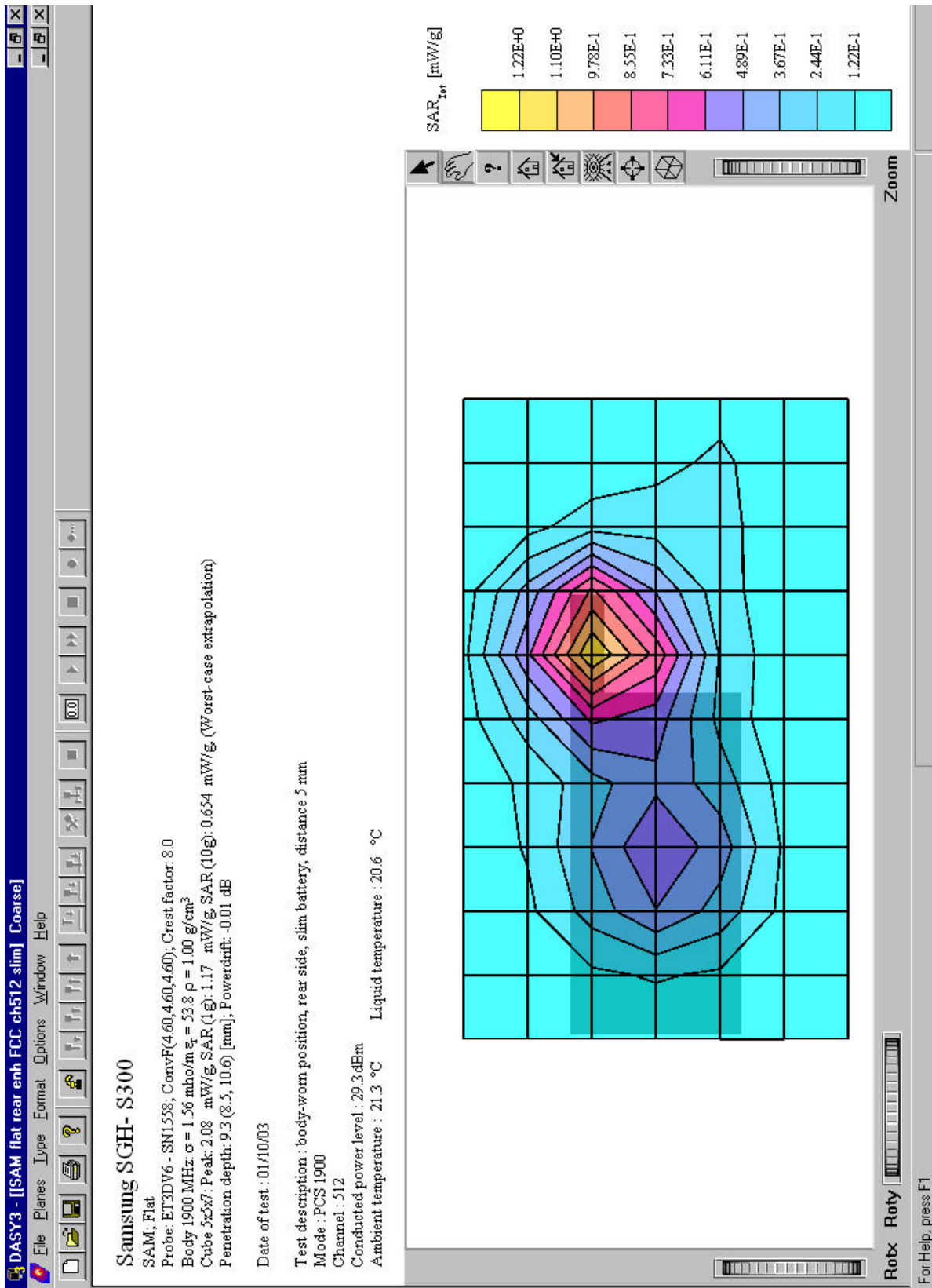


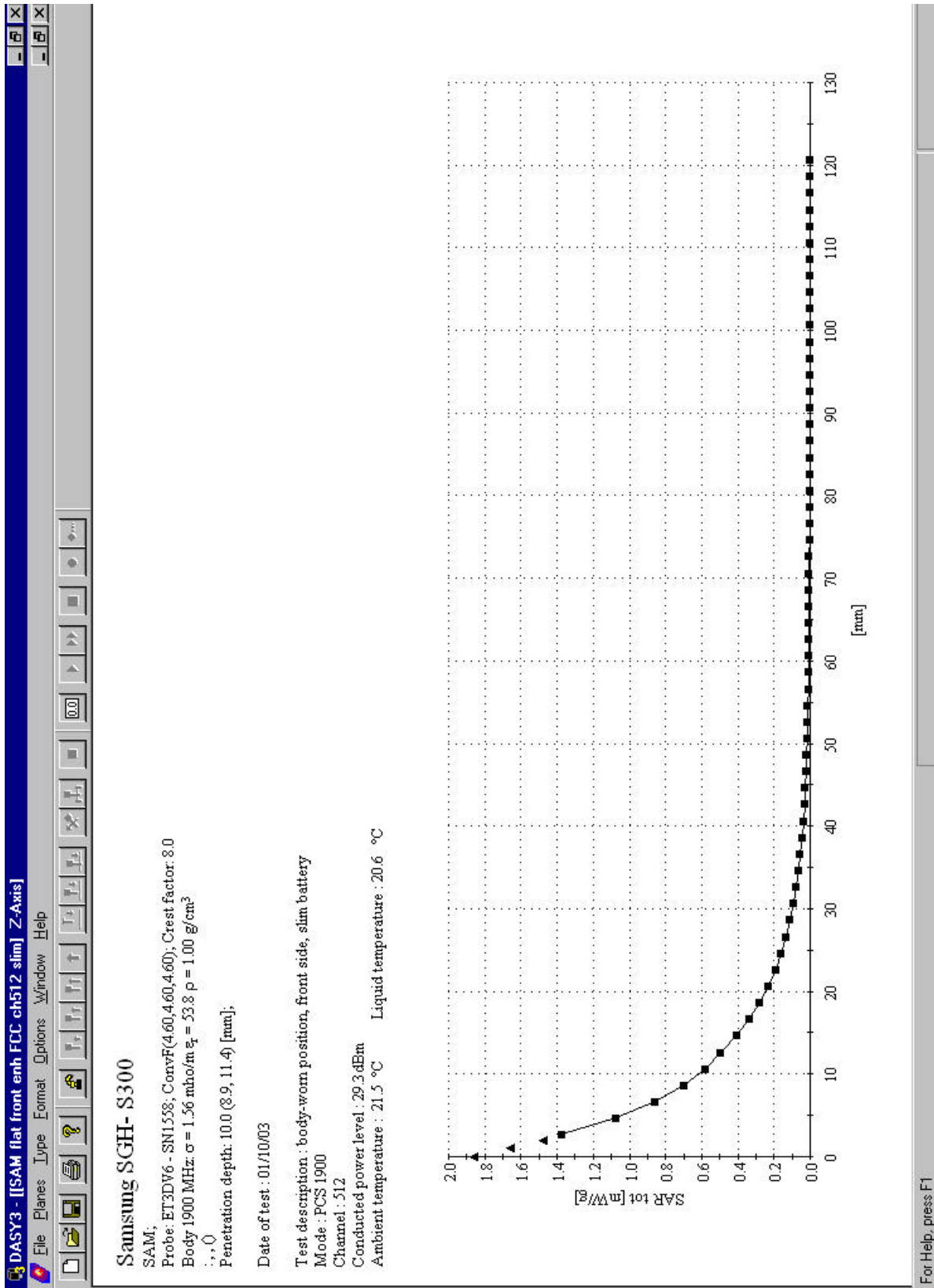












Annex 3 Photo documentation

Picture no. 1

Measurement System DASY 3



Picture no. 2

DUT - front view closed, with headset



Picture no. 3

DUT - front view open



Picture no. 4

DUT - rear view (open) and slim battery



Picture no. 5

DUT - rear view (closed) and standard battery



Picture no. 6

DUT - side view with slim battery



Picture no. 7

DUT - side view with standard battery



Picture no. 8

slim battery (left) and standard battery (right) - outside view



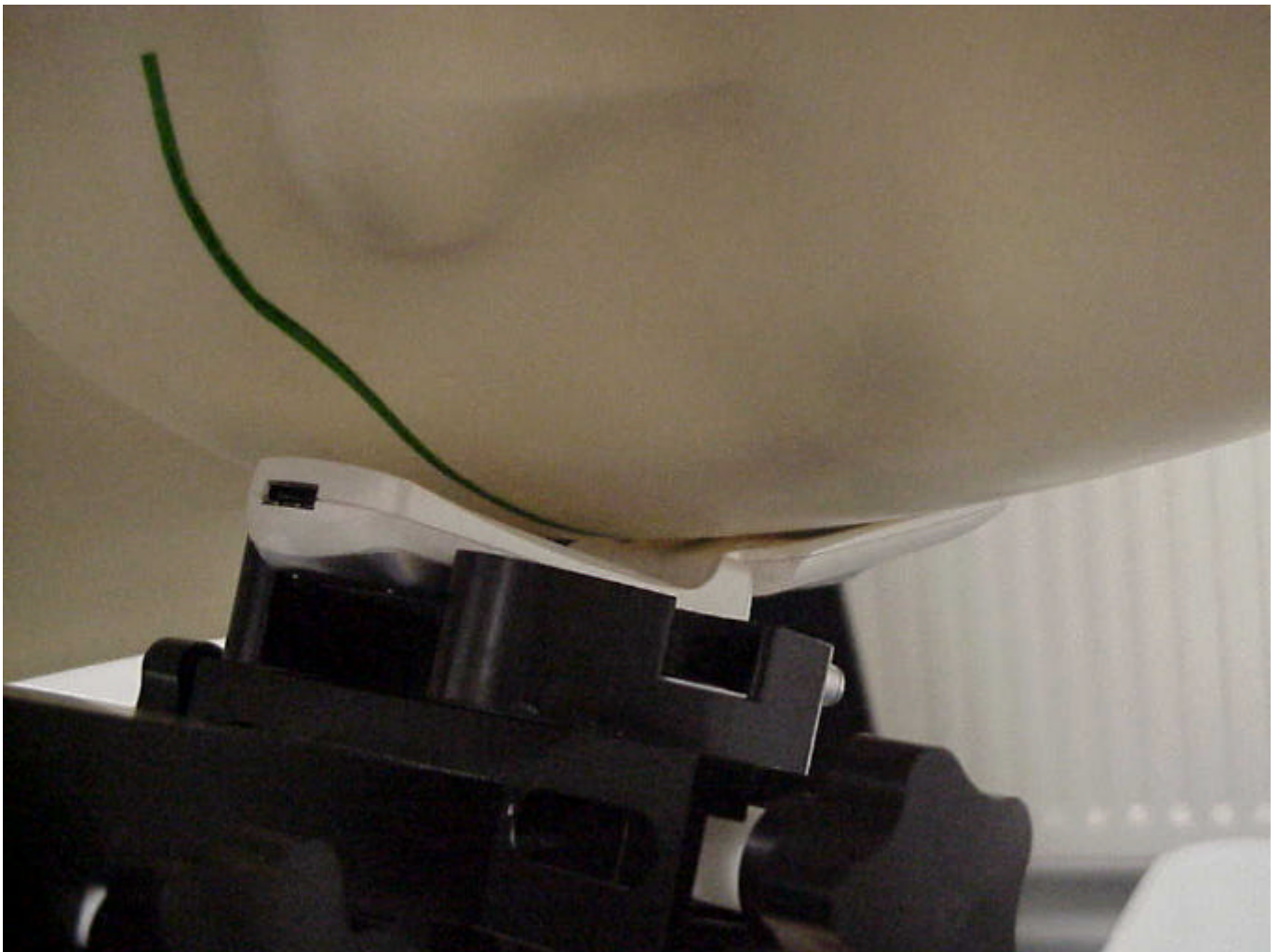
Picture no. 9

slim battery (left) and standard battery (right) - inside view



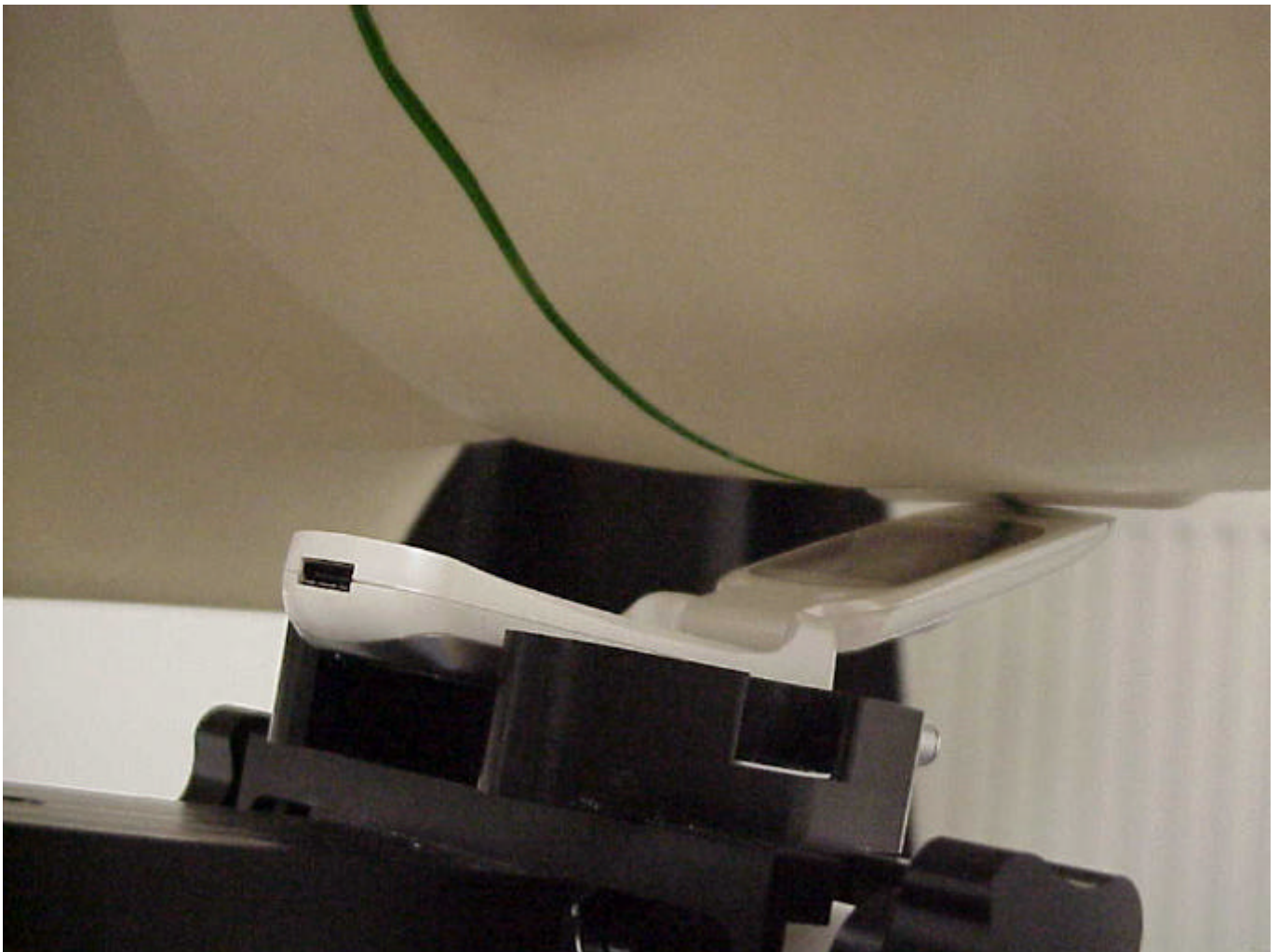
Picture no. 10

test position left hand cheek



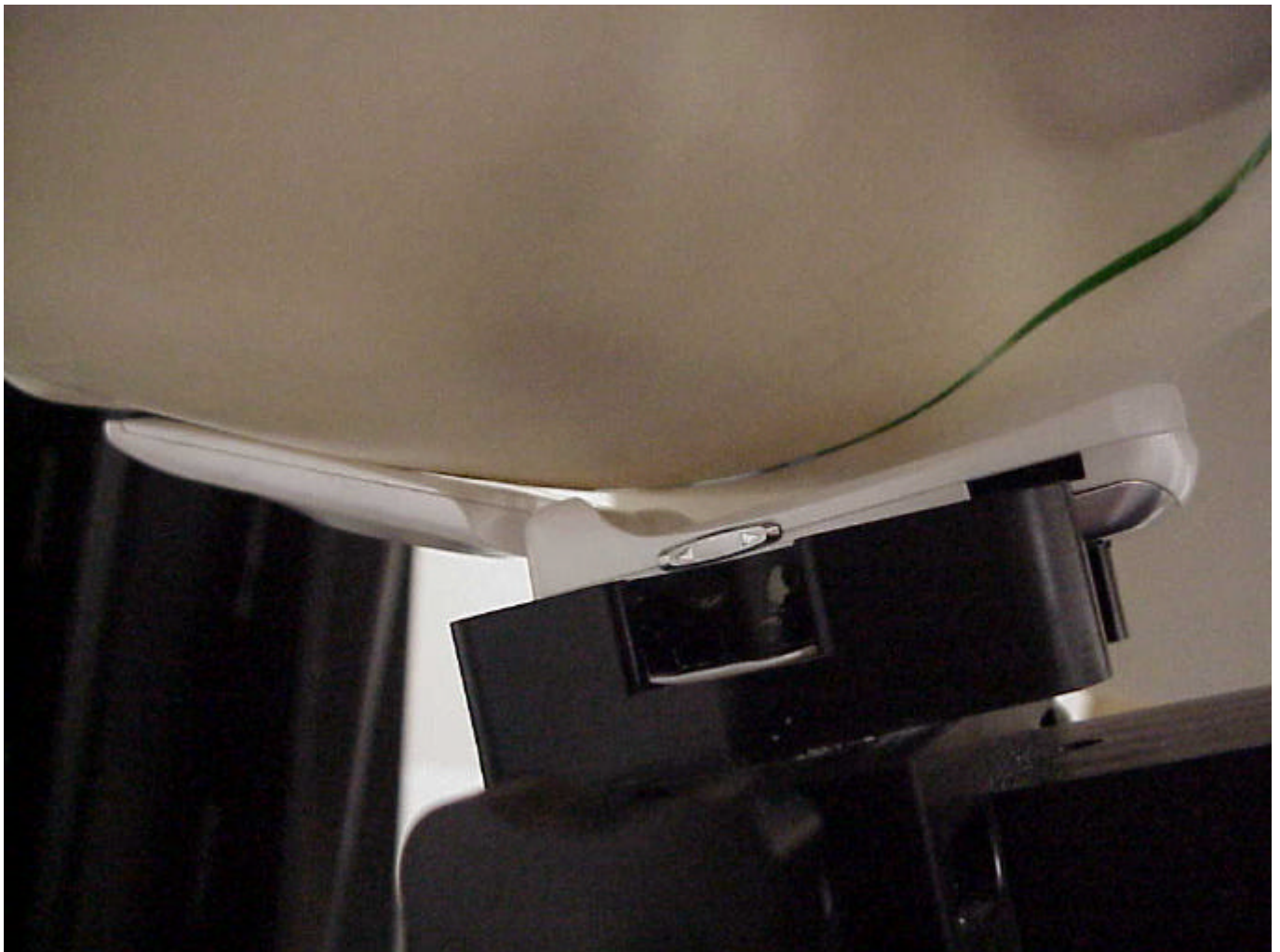
Picture no. 11

test position left hand tilted 15°



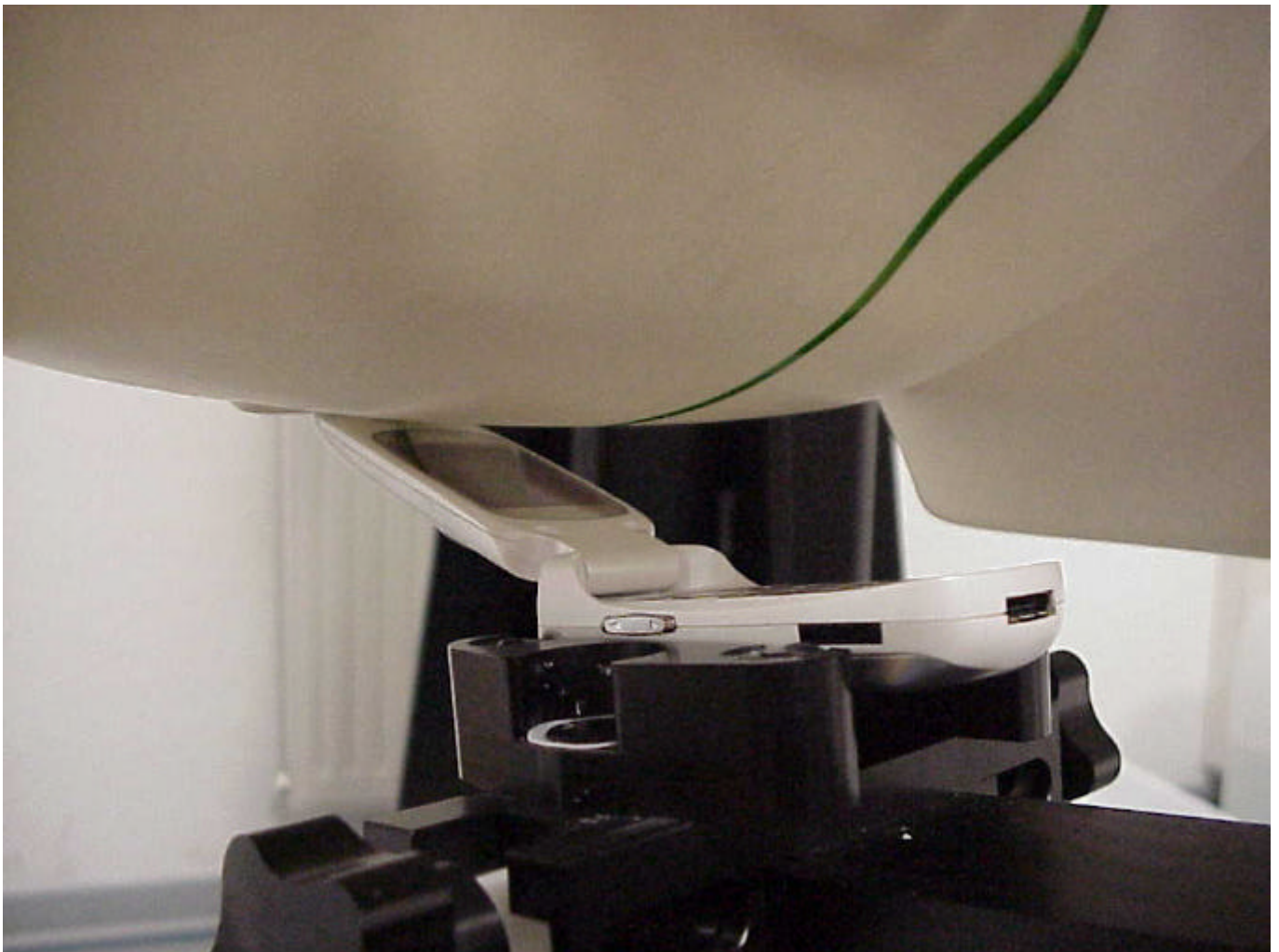
Picture no. 12

test position right hand cheek



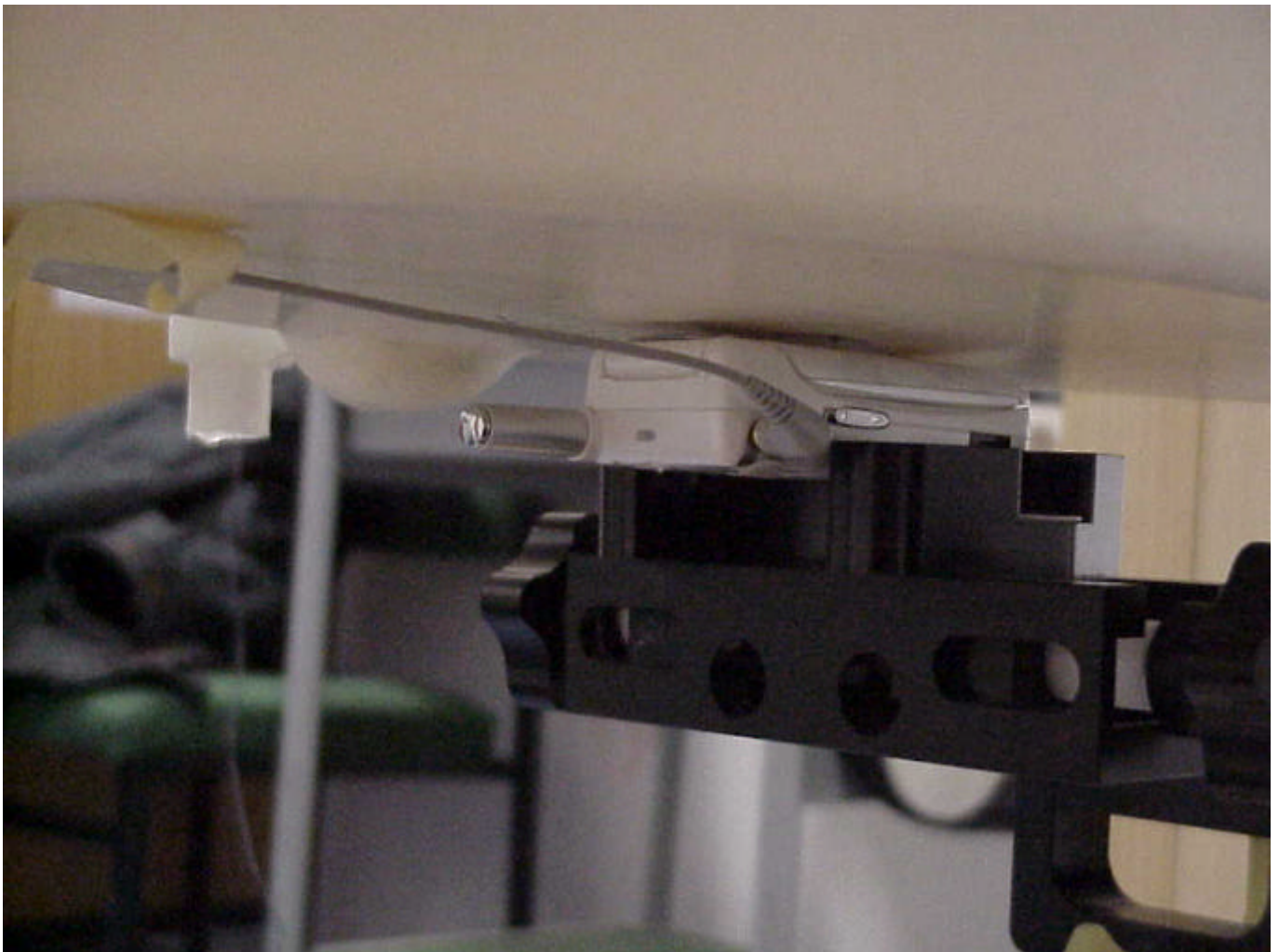
Picture no. 13

test position right hand tilted 15°



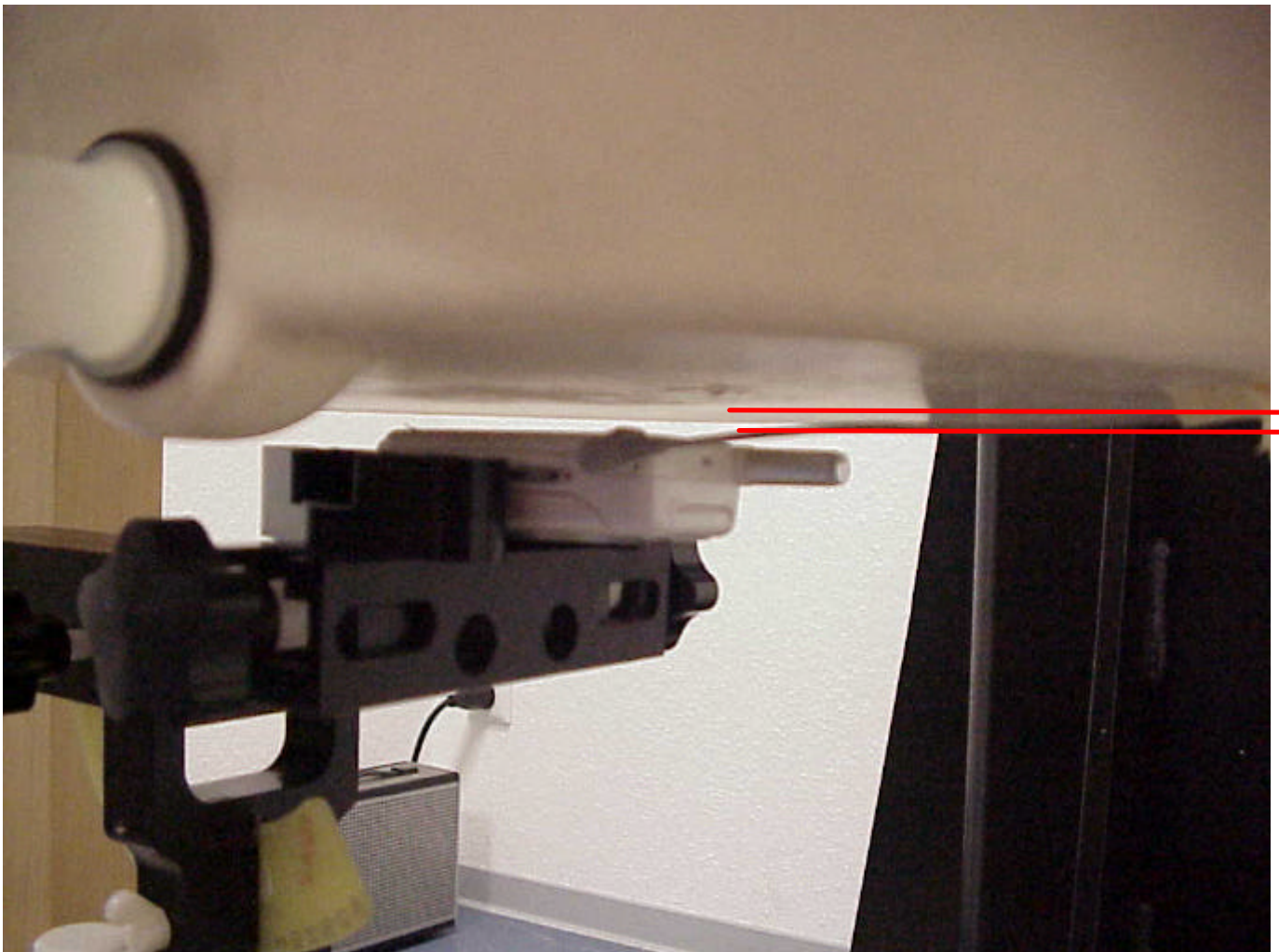
Picture no. 14

test position body , front side touched, with headset



Picture no. 15

test position rear side, with headset (distance 5 mm)



Picture no. 16

liquid depth of head simulating liquid (1900 MHz)



Picture no. 17

liquid depth of body simulating liquid (1900 MHz)



Annex 4 Calibration parameters of E-field probe

Calibration parameters are described in the additional document

**‘ Calibration data and Phantom information for test report no. 4-0674-2-1/02‘,
provided together with this document.**