

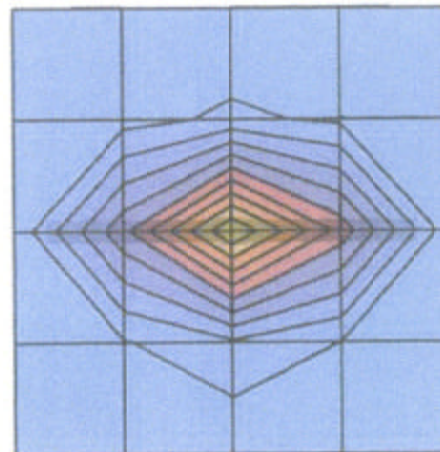
1900MHz Brain Dipole Validation

SAM Phantom; Flat Section; Probe:ET3DV6 - SN1660; ConvF(5.20,5.20,5.20)

Med. Parameters 1900 MHz Brain: $\sigma = 1.45$ mho/m $\epsilon_r = 38.2$ $\rho = 1.00$ g/cm³; Antenna Position -- Out; Crest Factor 1.0
SAR (1g): 10.4 mW/g, SAR (10g): 5.19 mW/g

1900MHz Brain Dipole Validation (D1900V2 S/N: 548)

Frequency: 1900 MHz; Antenna Input Power: 250 [mW]; Ambient Temp. = 22.6°C / Measured Tissue Temp = 20.5°C
Brain Tissue Simulating Liquid [07/08/2002]



SAR_{Tot} [mW/g]

