

SAMSUNG FCC ID : A3LSGHP910 1900MHz GSM1900 Head SAR

DUT: SGH-P910(Vertical); Serial: FD-070-F

Program Name: SGH-P910 GSM1900 Right Vertical(Job No. : FD-070)

Procedure Name: Cheek/Touch, Ch.512, Ant.Intenna, Bat.Standard

Procedure Notes: Meas. Ambient Temp(celsius)-22.2, Tissue Temp(celsius)-21.8; Test Date-02/May/2006 [OET Bulletin 65-Supplement C, July 2001]

Communication System: GSM 1900; Frequency: 1850.2 MHz;Duty Cycle: 1:8.3

Medium parameters used: $f = 1850.2$ MHz; $\sigma = 1.4$ mho/m; $\epsilon_r = 39.7$; $\rho = 1000$ kg/m³

Phantom section: Right Section

DASY4 Configuration:

- Probe: ES3DV2 - SN3017; ConvF(5.02, 5.02, 5.02); Calibrated: 2005-09-20
- Sensor-Surface: 4mm (Mechanical Surface Detection)
- Electronics: DAE4 Sn670; Calibrated: 2006-03-21
- Phantom: PHANTOM #1; Type: SAM; Serial: TP-1143
- Measurement SW: DASY4, V4.6 Build 23; Postprocessing SW: SEMCAD, V1.8 Build 160

Cheek/Touch, Ch.512, Ant.Intenna, Bat.Standard/Zoom Scan (5x5x7)/Cube 0:

Measurement grid: dx=8mm, dy=8mm, dz=5mm

Reference Value = 1.64 V/m; Power Drift = -0.046 dB

Peak SAR (extrapolated) = 0.077 W/kg

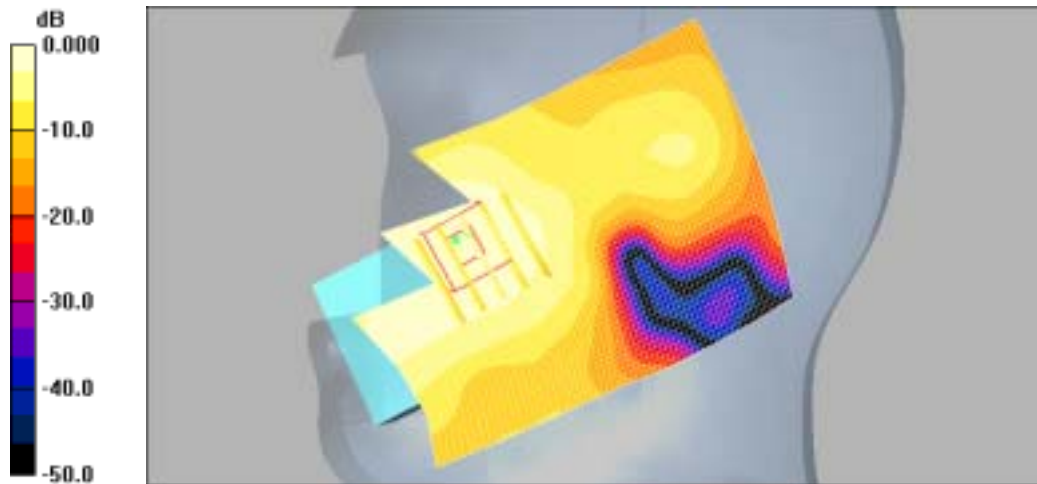
SAR(1 g) = 0.057 mW/g

Maximum value of SAR (measured) = 0.061 mW/g

Cheek/Touch, Ch.512, Ant.Intenna, Bat.Standard/Area Scan (51x71x1): Measurement

grid: dx=20mm, dy=20mm

Maximum value of SAR (interpolated) = 0.057 mW/g



0 dB = 0.057mW/g

SAMSUNG FCC ID : A3LSGHP910 1900MHz GSM1900 Head SAR

DUT: SGH-P910(Vertical); Serial: FD-070-F

Program Name: SGH-P910 GSM1900 Right Vertical(Job No. : FD-070)

Procedure Name: Ear/Tilt, Ch.661, Ant.Intenna, Bat.Standard

Procedure Notes: Meas. Ambient Temp(celsius)-22.2, Tissue Temp(celsius)-21.8; Test Date-02/May/2006 [OET Bulletin 65-Supplement C, July 2001]

Communication System: GSM 1900; Frequency: 1880 MHz;Duty Cycle: 1:8.3

Medium parameters used: $f = 1880$ MHz; $\sigma = 1.4$ mho/m; $\epsilon_r = 39.7$; $\rho = 1000$ kg/m³

Phantom section: Right Section

DASY4 Configuration:

- Probe: ES3DV2 - SN3017; ConvF(5.02, 5.02, 5.02); Calibrated: 2005-09-20
- Sensor-Surface: 4mm (Mechanical Surface Detection)
- Electronics: DAE4 Sn670; Calibrated: 2006-03-21
- Phantom: PHANTOM #1; Type: SAM; Serial: TP-1143
- Measurement SW: DASY4, V4.6 Build 23; Postprocessing SW: SEMCAD, V1.8 Build 160

Ear/Tilt, Ch.661, Ant.Intenna, Bat.Standard/Zoom Scan (5x5x7)/Cube 0: Measurement grid: dx=8mm, dy=8mm, dz=5mm

Reference Value = 2.79 V/m; Power Drift = 0.147 dB

Peak SAR (extrapolated) = 0.042 W/kg

SAR(1 g) = 0.027 mW/g

Ear/Tilt, Ch.661, Ant.Intenna, Bat.Standard/Area Scan (51x71x1): Measurement grid:

dx=20mm, dy=20mm

Maximum value of SAR (interpolated) = 0.030 mW/g



0 dB = 0.030mW/g

SAMSUNG FCC ID : A3LSGHP910 1900MHz GSM1900 Head SAR

DUT: SGH-P910(Vertical); Serial: FD-070-F

Program Name: SGH-P910 GSM1900 Left Vertical (Job No. : FD-070)

Procedure Name: Cheek/Touch, Ch.512, Ant.Intenna, Bat.Standard

Procedure Notes: Meas. Ambient Temp(celsius)-22.2, Tissue Temp(celsius)-21.8; Test Date-02/May/2006 [OET Bulletin 65-Supplement C, July 2001]

Communication System: GSM 1900; Frequency: 1850.2 MHz;Duty Cycle: 1:8.3

Medium parameters used: $f = 1850.2$ MHz; $\sigma = 1.4$ mho/m; $\epsilon_r = 39.7$; $\rho = 1000$ kg/m³

Phantom section: Left Section

DASY4 Configuration:

- Probe: ES3DV2 - SN3017; ConvF(5.02, 5.02, 5.02); Calibrated: 2005-09-20
- Sensor-Surface: 4mm (Mechanical Surface Detection)
- Electronics: DAE4 Sn670; Calibrated: 2006-03-21
- Phantom: PHANTOM #1; Type: SAM; Serial: TP-1143
- Measurement SW: DASY4, V4.6 Build 23; Postprocessing SW: SEMCAD, V1.8 Build 160

Cheek/Touch, Ch.512, Ant.Intenna, Bat.Standard/Zoom Scan 2 (5x5x7)/Cube 0:

Measurement grid: dx=8mm, dy=8mm, dz=5mm

Reference Value = 2.04 V/m; Power Drift = 0.173 dB

Peak SAR (extrapolated) = 0.167 W/kg

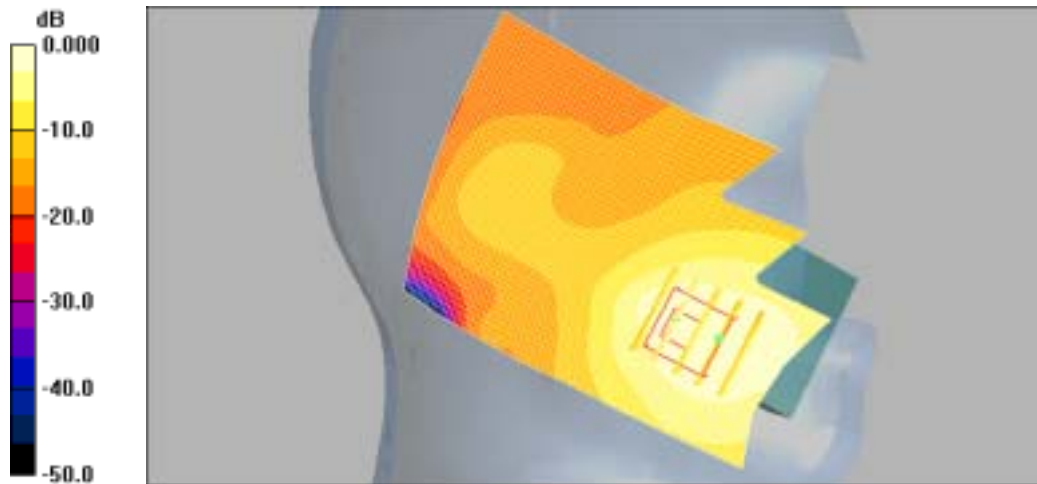
SAR(1 g) = 0.106 mW/g

Maximum value of SAR (measured) = 0.115 mW/g

Cheek/Touch, Ch.512, Ant.Intenna, Bat.Standard/Area Scan (51x71x1): Measurement

grid: dx=20mm, dy=20mm

Maximum value of SAR (interpolated) = 0.104 mW/g



0 dB = 0.104mW/g

SAMSUNG FCC ID : A3LSGHP910 1900MHz GSM1900 Head SAR

DUT: SGH-P910(Vertical); Serial: FD-070-F

Program Name: SGH-P910 GSM1900 Left Vertical (Job No. : FD-070)

Procedure Name: Ear/Tilt, Ch.661, Ant.Intenna, Bat.Standard

Procedure Notes: Meas. Ambient Temp(celsius)-22.2, Tissue Temp(celsius)-21.8; Test Date-02/May/2006 [OET Bulletin 65-Supplement C, July 2001]

Communication System: GSM 1900; Frequency: 1880 MHz;Duty Cycle: 1:8.3

Medium parameters used: $f = 1880$ MHz; $\sigma = 1.4$ mho/m; $\epsilon_r = 39.7$; $\rho = 1000$ kg/m³

Phantom section: Left Section

DASY4 Configuration:

- Probe: ES3DV2 - SN3017; ConvF(5.02, 5.02, 5.02); Calibrated: 2005-09-20
- Sensor-Surface: 4mm (Mechanical Surface Detection)
- Electronics: DAE4 Sn670; Calibrated: 2006-03-21
- Phantom: PHANTOM #1; Type: SAM; Serial: TP-1143
- Measurement SW: DASY4, V4.6 Build 23; Postprocessing SW: SEMCAD, V1.8 Build 160

Ear/Tilt, Ch.661, Ant.Intenna, Bat.Standard/Zoom Scan (5x5x7)/Cube 0: Measurement grid: dx=8mm, dy=8mm, dz=5mm

Reference Value = 2.09 V/m; Power Drift = 0.136 dB

Peak SAR (extrapolated) = 0.022 W/kg

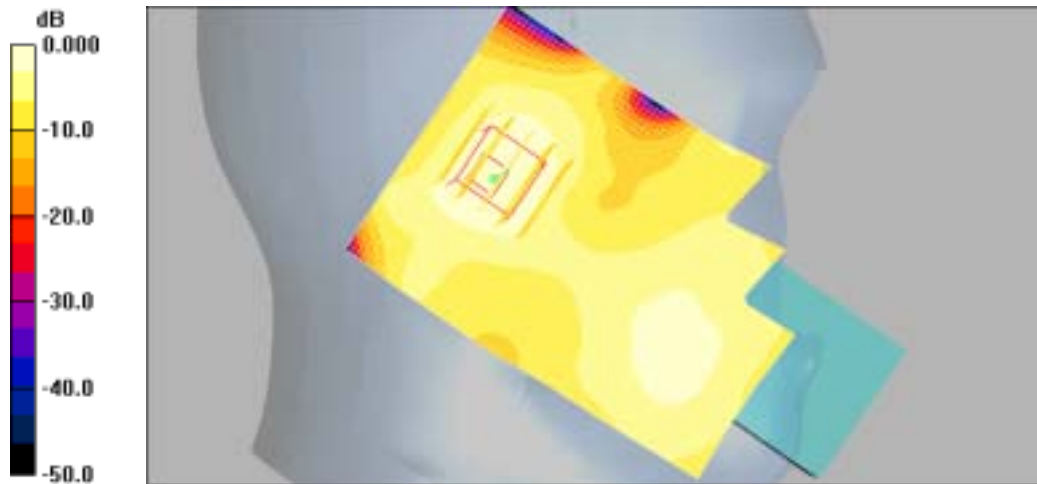
SAR(1 g) = 0.014 mW/g

Maximum value of SAR (measured) = 0.015 mW/g

Ear/Tilt, Ch.661, Ant.Intenna, Bat.Standard/Area Scan (51x71x1): Measurement grid:

dx=20mm, dy=20mm

Maximum value of SAR (interpolated) = 0.016 mW/g



0 dB = 0.016mW/g

SAMSUNG FCC ID : A3LSGHP910 1900MHz GSM1900 Head SAR

DUT: SGH-P910(Horizontal); Serial: FD-070-F

Program Name: SGH-P910 GSM1900 Right Horizontal(Job No. : FD-070)

Procedure Name: Cheek/Touch, Ch.512, Ant.Intenna, Bat.Standard

Procedure Notes: Meas. Ambient Temp(celsius)-22.2, Tissue Temp(celsius)-21.8; Test Date-02/May/2006 [OET Bulletin 65-Supplement C, July 2001]

Communication System: GSM 1900; Frequency: 1850.2 MHz;Duty Cycle: 1:8.3

Medium parameters used: $f = 1850.2$ MHz; $\sigma = 1.4$ mho/m; $\epsilon_r = 39.7$; $\rho = 1000$ kg/m³

Phantom section: Right Section

DASY4 Configuration:

- Probe: ES3DV2 - SN3017; ConvF(5.02, 5.02, 5.02); Calibrated: 2005-09-20
- Sensor-Surface: 4mm (Mechanical Surface Detection)
- Electronics: DAE4 Sn670; Calibrated: 2006-03-21
- Phantom: PHANTOM #1; Type: SAM; Serial: TP-1143
- Measurement SW: DASY4, V4.6 Build 23; Postprocessing SW: SEMCAD, V1.8 Build 160

Cheek/Touch, Ch.512, Ant.Intenna, Bat.Standard/Zoom Scan (5x5x7)/Cube 0:

Measurement grid: dx=8mm, dy=8mm, dz=5mm

Reference Value = 7.86 V/m; Power Drift = -0.175 dB

Peak SAR (extrapolated) = 0.221 W/kg

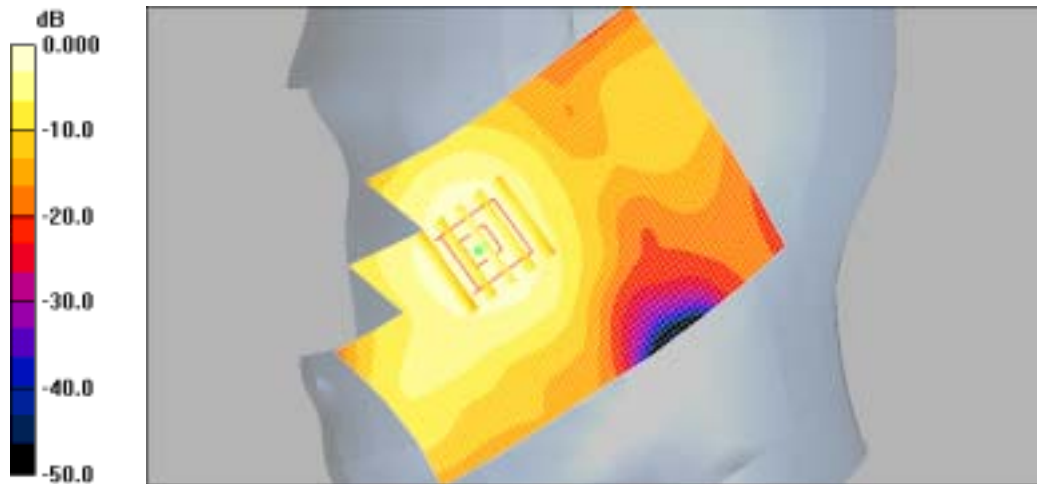
SAR(1 g) = 0.160 mW/g

Maximum value of SAR (measured) = 0.173 mW/g

Cheek/Touch, Ch.512, Ant.Intenna, Bat.Standard/Area Scan (51x71x1): Measurement

grid: dx=20mm, dy=20mm

Maximum value of SAR (interpolated) = 0.163 mW/g



0 dB = 0.163mW/g

SAMSUNG FCC ID : A3LSGHP910 1900MHz GSM1900 Head SAR

DUT: SGH-P910(Horizontal); Serial: FD-070-F

Program Name: SGH-P910 GSM1900 Right Horizontal(Job No. : FD-070)

Procedure Name: Ear/Tilt, Ch.661, Ant.Intenna, Bat.Standard

Procedure Notes: Meas. Ambient Temp(celsius)-22.2, Tissue Temp(celsius)-21.8; Test Date-02/May/2006 [OET Bulletin 65-Supplement C, July 2001]

Communication System: GSM 1900; Frequency: 1880 MHz;Duty Cycle: 1:8.3

Medium parameters used: $f = 1880$ MHz; $\sigma = 1.4$ mho/m; $\epsilon_r = 39.7$; $\rho = 1000$ kg/m³

Phantom section: Right Section

DASY4 Configuration:

- Probe: ES3DV2 - SN3017; ConvF(5.02, 5.02, 5.02); Calibrated: 2005-09-20
- Sensor-Surface: 4mm (Mechanical Surface Detection)
- Electronics: DAE4 Sn670; Calibrated: 2006-03-21
- Phantom: PHANTOM #1; Type: SAM; Serial: TP-1143
- Measurement SW: DASY4, V4.6 Build 23; Postprocessing SW: SEMCAD, V1.8 Build 160

Ear/Tilt, Ch.661, Ant.Intenna, Bat.Standard/Zoom Scan (5x5x7)/Cube 0: Measurement grid: dx=8mm, dy=8mm, dz=5mm

Reference Value = 4.13 V/m; Power Drift = 0.026 dB

Peak SAR (extrapolated) = 0.035 W/kg

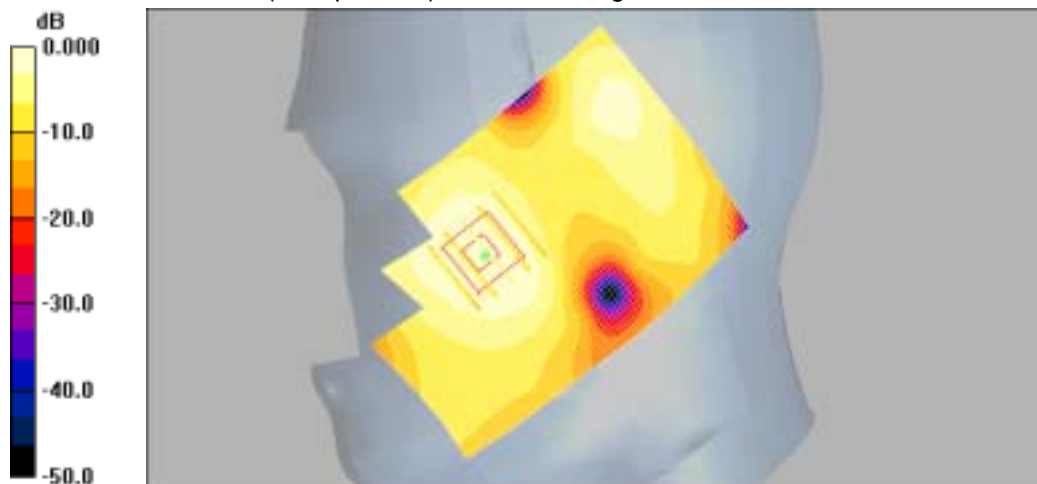
SAR(1 g) = 0.024 mW/g

Maximum value of SAR (measured) = 0.026 mW/g

Ear/Tilt, Ch.661, Ant.Intenna, Bat.Standard/Area Scan (51x71x1): Measurement grid:

dx=20mm, dy=20mm

Maximum value of SAR (interpolated) = 0.027 mW/g



0 dB = 0.027mW/g

SAMSUNG FCC ID : A3LSGHP910 1900MHz GSM1900 Head SAR

DUT: SGH-P910(Horizontal); Serial: FD-070-F

Program Name: SGH-P910 GSM1900 Left Horizontal (Job No. : FD-070)

Procedure Name: Cheek/Touch, Ch.512, Ant.Intenna, Bat.Standard

Procedure Notes: Meas. Ambient Temp(celsius)-22.2, Tissue Temp(celsius)-21.8; Test Date-02/May/2006 [OET Bulletin 65-Supplement C, July 2001]

Communication System: GSM 1900; Frequency: 1850.2 MHz;Duty Cycle: 1:8.3

Medium parameters used: $f = 1850.2$ MHz; $\sigma = 1.4$ mho/m; $\epsilon_r = 39.7$; $\rho = 1000$ kg/m³

Phantom section: Left Section

DASY4 Configuration:

- Probe: ES3DV2 - SN3017; ConvF(5.02, 5.02, 5.02); Calibrated: 2005-09-20
- Sensor-Surface: 4mm (Mechanical Surface Detection)
- Electronics: DAE4 Sn670; Calibrated: 2006-03-21
- Phantom: PHANTOM #1; Type: SAM; Serial: TP-1143
- Measurement SW: DASY4, V4.6 Build 23; Postprocessing SW: SEMCAD, V1.8 Build 160

Cheek/Touch, Ch.512, Ant.Intenna, Bat.Standard/Zoom Scan (5x5x7)/Cube 0:

Measurement grid: dx=8mm, dy=8mm, dz=5mm

Reference Value = 6.13 V/m; Power Drift = -0.005 dB

Peak SAR (extrapolated) = 0.270 W/kg

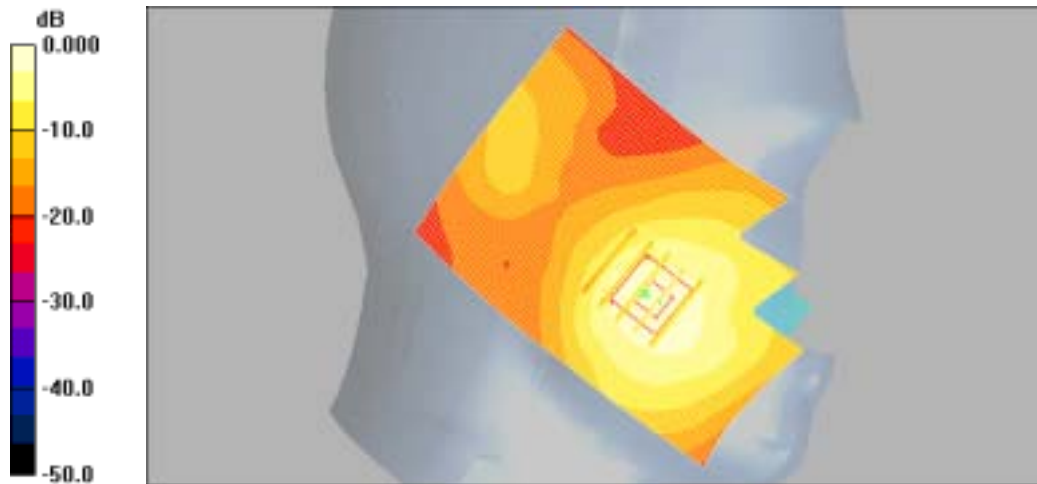
SAR(1 g) = 0.186 mW/g

Maximum value of SAR (measured) = 0.201 mW/g

Cheek/Touch, Ch.512, Ant.Intenna, Bat.Standard/Area Scan (51x71x1): Measurement

grid: dx=20mm, dy=20mm

Maximum value of SAR (interpolated) = 0.217 mW/g



0 dB = 0.217mW/g

SAMSUNG FCC ID : A3LSGHP910 1900MHz GSM1900 Head SAR

DUT: SGH-P910(Horizontal); Serial: FD-070-F

Program Name: SGH-P910 GSM1900 Left Horizontal (Job No. : FD-070)

Procedure Name: Ear/Tilt, Ch.661, Ant.Intenna, Bat.Standard

Procedure Notes: Meas. Ambient Temp(celsius)-22.2, Tissue Temp(celsius)-21.8; Test Date-02/May/2006 [OET Bulletin 65-Supplement C, July 2001]

Communication System: GSM 1900; Frequency: 1880 MHz;Duty Cycle: 1:8.3

Medium parameters used: $f = 1880$ MHz; $\sigma = 1.4$ mho/m; $\epsilon_r = 39.7$; $\rho = 1000$ kg/m³

Phantom section: Left Section

DASY4 Configuration:

- Probe: ES3DV2 - SN3017; ConvF(5.02, 5.02, 5.02); Calibrated: 2005-09-20
- Sensor-Surface: 4mm (Mechanical Surface Detection)
- Electronics: DAE4 Sn670; Calibrated: 2006-03-21
- Phantom: PHANTOM #1; Type: SAM; Serial: TP-1143
- Measurement SW: DASY4, V4.6 Build 23; Postprocessing SW: SEMCAD, V1.8 Build 160

Ear/Tilt, Ch.661, Ant.Intenna, Bat.Standard/Zoom Scan (5x5x7)/Cube 0: Measurement grid: dx=8mm, dy=8mm, dz=5mm

Reference Value = 2.43 V/m; Power Drift = -0.028 dB

Peak SAR (extrapolated) = 0.031 W/kg

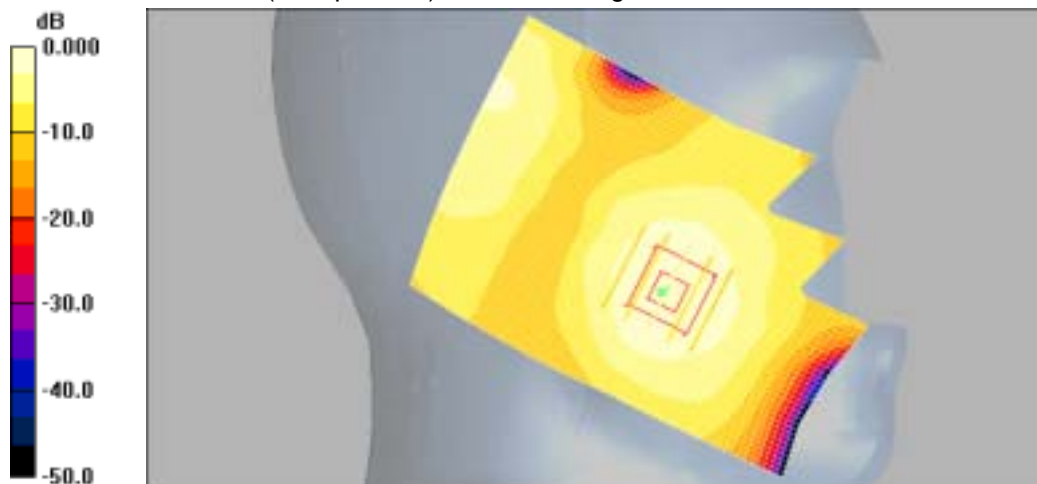
SAR(1 g) = 0.021 mW/g

Maximum value of SAR (measured) = 0.023 mW/g

Ear/Tilt, Ch.661, Ant.Intenna, Bat.Standard/Area Scan (51x71x1): Measurement grid:

dx=20mm, dy=20mm

Maximum value of SAR (interpolated) = 0.023 mW/g



0 dB = 0.023mW/g

SAMSUNG FCC ID : A3LSGHP910 1900MHz GSM1900 Head SAR

DUT: SGH-P910(Horizontal); Serial: FD-070-F

Program Name: SGH-P910 GSM1900 Left Horizontal (Job No. : FD-070)

Procedure Name: Cheek/Touch, Ch.512, Ant.Intenna, Bat.Standard with BT ON

Procedure Notes: Meas. Ambient Temp(celsius)-22.2, Tissue Temp(celsius)-21.8; Test Date-02/May/2006 [OET Bulletin 65-Supplement C, July 2001]

Communication System: GSM 1900; Frequency: 1850.2 MHz;Duty Cycle: 1:8.3

Medium parameters used: $f = 1850.2$ MHz; $\sigma = 1.4$ mho/m; $\epsilon_r = 39.7$; $\rho = 1000$ kg/m³

Phantom section: Left Section

DASY4 Configuration:

- Probe: ES3DV2 - SN3017; ConvF(5.02, 5.02, 5.02); Calibrated: 2005-09-20
- Sensor-Surface: 4mm (Mechanical Surface Detection)
- Electronics: DAE4 Sn670; Calibrated: 2006-03-21
- Phantom: PHANTOM #1; Type: SAM; Serial: TP-1143
- Measurement SW: DASY4, V4.6 Build 23; Postprocessing SW: SEMCAD, V1.8 Build 160

Cheek/Touch, Ch.512, Ant.Intenna, Bat.Standard with BT ON/Zoom Scan (5x5x7)/Cube

0: Measurement grid: dx=8mm, dy=8mm, dz=5mm

Reference Value = 5.79 V/m; Power Drift = -0.115 dB

Peak SAR (extrapolated) = 0.266 W/kg

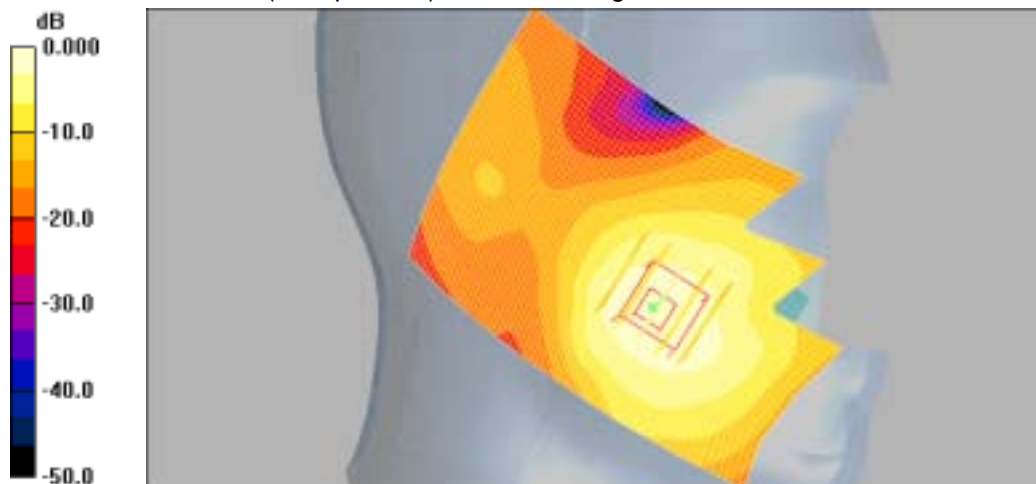
SAR(1 g) = 0.182 mW/g

Maximum value of SAR (measured) = 0.202 mW/g

Cheek/Touch, Ch.512, Ant.Intenna, Bat.Standard with BT ON/Area Scan (51x71x1):

Measurement grid: dx=20mm, dy=20mm

Maximum value of SAR (interpolated) = 0.200 mW/g



0 dB = 0.200mW/g

SAMSUNG FCC ID : A3LSGHP910 1900MHz GSM1900 Head SAR

DUT: SGH-P910(Horizontal); Serial: FD-070-F

Program Name: SGH-P910 GSM1900 Left Horizontal (Job No. : FD-070)

Procedure Name: Cheek/Touch, Ch.512, Ant.Intenna, Bat.Standard with DMB Ant.

Procedure Notes: Meas. Ambient Temp(celsius)-22.2, Tissue Temp(celsius)-21.8; Test Date-02/May/2006 [OET Bulletin 65-Supplement C, July 2001]

Communication System: GSM 1900; Frequency: 1850.2 MHz;Duty Cycle: 1:8.3

Medium parameters used: $f = 1850.2$ MHz; $\sigma = 1.4$ mho/m; $\epsilon_r = 39.7$; $\rho = 1000$ kg/m³

Phantom section: Left Section

DASY4 Configuration:

- Probe: ES3DV2 - SN3017; ConvF(5.02, 5.02, 5.02); Calibrated: 2005-09-20
- Sensor-Surface: 4mm (Mechanical Surface Detection)
- Electronics: DAE4 Sn670; Calibrated: 2006-03-21
- Phantom: PHANTOM #1; Type: SAM; Serial: TP-1143
- Measurement SW: DASY4, V4.6 Build 23; Postprocessing SW: SEMCAD, V1.8 Build 160

Cheek/Touch, Ch.512, Ant.Intenna, Bat.Standard with DMB Ant./Area Scan (51x71x1):

Measurement grid: dx=20mm, dy=20mm

Maximum value of SAR (interpolated) = 0.213 mW/g

Cheek/Touch, Ch.512, Ant.Intenna, Bat.Standard with DMB Ant./Zoom Scan

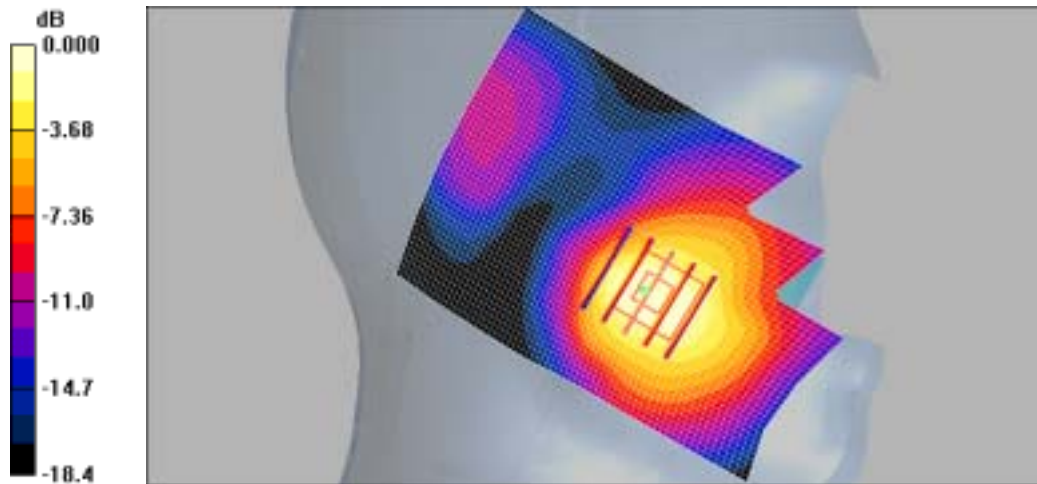
(5x5x7)/Cube 0: Measurement grid: dx=8mm, dy=8mm, dz=5mm

Reference Value = 6.06 V/m; Power Drift = -0.194 dB

Peak SAR (extrapolated) = 0.253 W/kg

SAR(1 g) = 0.177 mW/g

Maximum value of SAR (measured) = 0.194 mW/g



0 dB = 0.194mW/g

SAMSUNG FCC ID : A3LSGHP910 1900MHz GPRS1900 Body SAR

DUT: SGH-P910(Body); Serial: FD-070-F

Program Name: SGH-P910 GSM1900 Body (Job No. : FD-070)

Procedure Name: Body, Ch.512, Ant.Intenna, Bat.Standard

Procedure Notes: Meas. Ambient Temp(celsius)-22.4, Tissue Temp(celsius)-21.7; Test Date-02/May/2006 [OET Bulletin 65-Supplement C, July 2001]

Communication System: Body GPRS ; Frequency: 1850.2 MHz;Duty Cycle: 1:4.15

Medium parameters used: $f = 1850.2$ MHz; $\sigma = 1.53$ mho/m; $\epsilon_r = 52.9$; $\rho = 1000$ kg/m³

Phantom section: Flat Section

DASY4 Configuration:

- Probe: ES3DV2 - SN3017; ConvF(4.47, 4.47, 4.47); Calibrated: 2005-09-20
- Sensor-Surface: 4mm (Mechanical Surface Detection)
- Electronics: DAE4 Sn670; Calibrated: 2006-03-21
- Phantom: PHANTOM #2; Type: SAM; Serial: TP-1141
- Measurement SW: DASY4, V4.6 Build 23; Postprocessing SW: SEMCAD, V1.8 Build 160

Body, Ch.512, Ant.Intenna, Bat.Standard/Zoom Scan (5x5x7)/Cube 0: Measurement grid:

$dx=8$ mm, $dy=8$ mm, $dz=5$ mm

Reference Value = 11.8 V/m; Power Drift = -0.126 dB

Peak SAR (extrapolated) = 0.459 W/kg

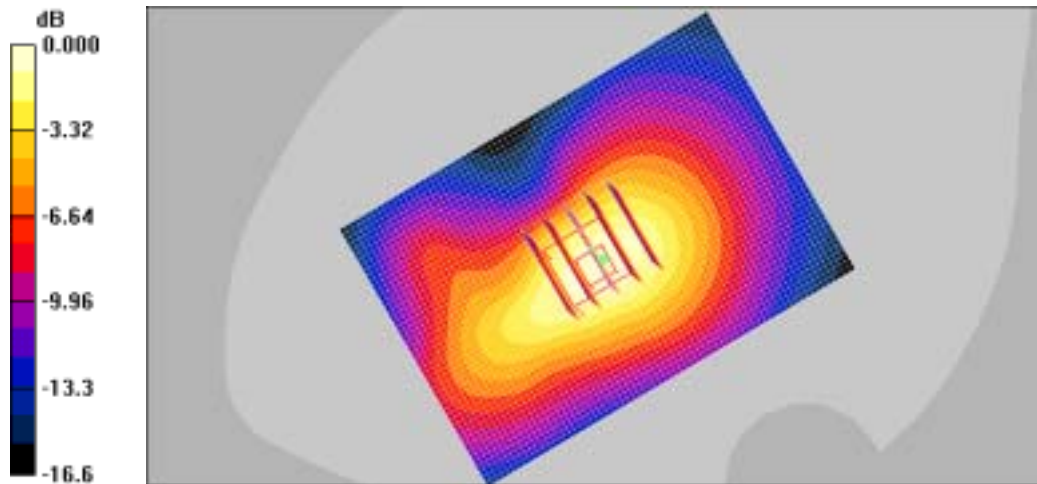
SAR(1 g) = 0.310 mW/g

Maximum value of SAR (measured) = 0.331 mW/g

Body, Ch.512, Ant.Intenna, Bat.Standard/Area Scan (51x71x1): Measurement grid:

$dx=20$ mm, $dy=20$ mm

Maximum value of SAR (interpolated) = 0.363 mW/g



0 dB = 0.363mW/g

SAMSUNG FCC ID : A3LSGHP910 1900MHz GPRS1900 Body SAR

DUT: SGH-P910(Body); Serial: FD-070-F

Program Name: SGH-P910 GSM1900 Body (Job No. : FD-070)

Procedure Name: Body, Ch.512, Ant.Intenna, Bat.Standard With BT ON

Procedure Notes: Meas. Ambient Temp(celsius)-22.4, Tissue Temp(celsius)-21.7; Test Date-02/May/2006 [OET Bulletin 65-Supplement C, July 2001]

Communication System: Body GPRS ; Frequency: 1850.2 MHz;Duty Cycle: 1:4.15

Medium parameters used: $f = 1850.2$ MHz; $\sigma = 1.53$ mho/m; $\epsilon_r = 52.9$; $\rho = 1000$ kg/m³

Phantom section: Flat Section

DASY4 Configuration:

- Probe: ES3DV2 - SN3017; ConvF(4.47, 4.47, 4.47); Calibrated: 2005-09-20
- Sensor-Surface: 4mm (Mechanical Surface Detection)
- Electronics: DAE4 Sn670; Calibrated: 2006-03-21
- Phantom: PHANTOM #2; Type: SAM; Serial: TP-1141
- Measurement SW: DASY4, V4.6 Build 23; Postprocessing SW: SEMCAD, V1.8 Build 160

Body, Ch.512, Ant.Intenna, Bat.Standard With BT ON/Zoom Scan (5x5x7)/Cube 0:

Measurement grid: dx=8mm, dy=8mm, dz=5mm

Reference Value = 10.0 V/m; Power Drift = 0.167 dB

Peak SAR (extrapolated) = 0.314 W/kg

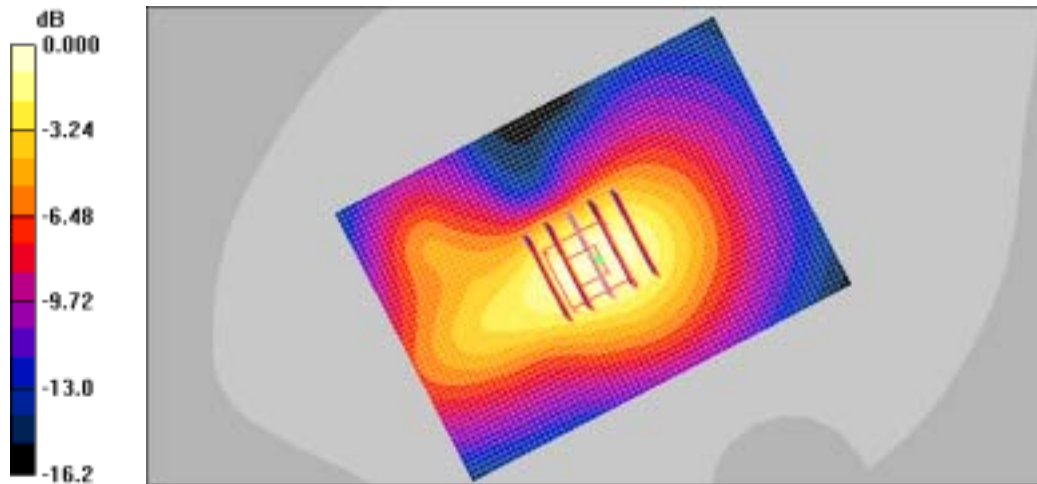
SAR(1 g) = 0.212 mW/g

Maximum value of SAR (measured) = 0.226 mW/g

Body, Ch.512, Ant.Intenna, Bat.Standard With BT ON/Area Scan (51x71x1):

Measurement grid: dx=20mm, dy=20mm

Maximum value of SAR (interpolated) = 0.253 mW/g



0 dB = 0.253mW/g

SAMSUNG FCC ID : A3LSGHP910 1900MHz GSM1900 Head SAR

DUT: SGH-P910(Horizontal); Serial: FD-070-F

Program Name: SGH-P910 GSM1900 Left Horizontal (Job No. : FD-070)

Procedure Name: Cheek/Touch, Ch.512, Ant.Intenna, Bat.Standard

Procedure Notes: Meas. Ambient Temp(celsius)-22.2, Tissue Temp(celsius)-21.8; Test Date-02/May/2006 [OET Bulletin 65-Supplement C, July 2001]

Communication System: GSM 1900; Frequency: 1850.2 MHz;Duty Cycle: 1:8.3

Medium parameters used: $f = 1850.2$ MHz; $\sigma = 1.4$ mho/m; $\epsilon_r = 39.7$; $\rho = 1000$ kg/m³

Phantom section: Left Section

DASY4 Configuration:

- Probe: ES3DV2 - SN3017; ConvF(5.02, 5.02, 5.02); Calibrated: 2005-09-20
- Sensor-Surface: 4mm (Mechanical Surface Detection)
- Electronics: DAE4 Sn670; Calibrated: 2006-03-21
- Phantom: PHANTOM #1; Type: SAM; Serial: TP-1143
- Measurement SW: DASY4, V4.6 Build 23; Postprocessing SW: SEMCAD, V1.8 Build 160

Cheek/Touch, Ch.512, Ant.Intenna, Bat.Standard/Zoom Scan (5x5x7)/Cube 0:

Measurement grid: dx=8mm, dy=8mm, dz=5mm

Reference Value = 6.13 V/m; Power Drift = -0.005 dB

Peak SAR (extrapolated) = 0.270 W/kg

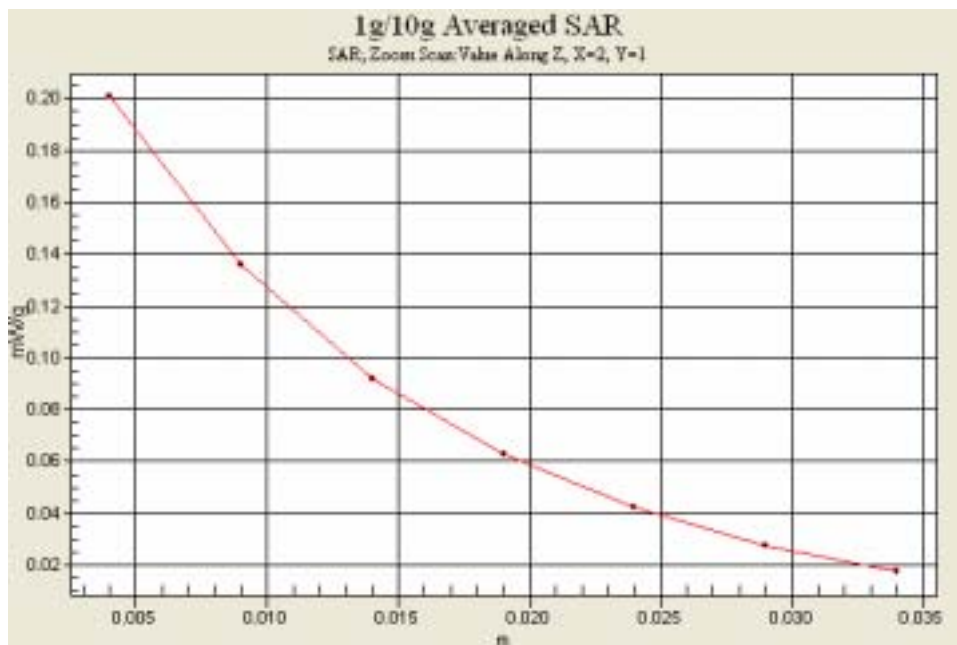
SAR(1 g) = 0.186 mW/g

Maximum value of SAR (measured) = 0.201 mW/g

Cheek/Touch, Ch.512, Ant.Intenna, Bat.Standard/Area Scan (51x71x1): Measurement

grid: dx=20mm, dy=20mm

Maximum value of SAR (interpolated) = 0.217 mW/g



SAMSUNG FCC ID : A3LSGHP910 1900MHz GSM1900 Body SAR

DUT: SGH-P910(Body); Serial: FD-070-F

Program Name: SGH-P910 GSM1900 Body (Job No. : FD-070)

Procedure Name: Body, Ch.512, Ant.Intenna, Bat.Standard

Procedure Notes: Meas. Ambient Temp(celsius)-22.4, Tissue Temp(celsius)-21.7; Test Date-02/May/2006 [OET Bulletin 65-Supplement C, July 2001]

Communication System: Body GPRS ; Frequency: 1850.2 MHz;Duty Cycle: 1:4.15

Medium parameters used: $f = 1850.2$ MHz; $\sigma = 1.53$ mho/m; $\epsilon_r = 52.9$; $\rho = 1000$ kg/m³

Phantom section: Flat Section

DASY4 Configuration:

- Probe: ES3DV2 - SN3017; ConvF(4.47, 4.47, 4.47); Calibrated: 2005-09-20
- Sensor - Surface: 4mm (Mechanical Surface Detection)
- Electronics: DAE4 Sn670; Calibrated: 2006-03-21
- Phantom: PHANTOM #2; Type: SAM; Serial: TP-1141
- Measurement SW: DASY4, V4.6 Build 23; Postprocessing SW: SEMCAD, V1.8 Build 160

Body, Ch.512, Ant.Intenna, Bat.Standard/Zoom Scan (5x5x7)/Cube 0: Measurement grid:

$dx=8$ mm, $dy=8$ mm, $dz=5$ mm

Reference Value = 11.8 V/m; Power Drift = -0.126 dB

Peak SAR (extrapolated) = 0.459 W/kg

SAR(1 g) = 0.310 mW/g

Maximum value of SAR (measured) = 0.331 mW/g

Body, Ch.512, Ant.Intenna, Bat.Standard/Area Scan (51x71x1): Measurement grid:

$dx=20$ mm, $dy=20$ mm

Maximum value of SAR (interpolated) = 0.363 mW/g

