

# SAMSUNG FCC ID : A3LSGHP710 -- 1900MHz GSM1900 Head SAR

**DUT: SGH-P710; Serial: FB-050-D**

**Program Name: SGH-P710 GSM1900 Right (Job No.: FB-050)**

**Procedure Name: Cheek/Touch, Ch.512, Ant.Fixed, Bat.Standard**

**Procedure Notes: Meas.Tissue Temp(celsius)-21.2; Test Date-31/Aug/2004 [OET Bulletin 65-Supplement C, July 2001]**

Communication System: GSM 1900; Frequency: 1850.2 MHz; Duty Cycle: 1:8.3

Medium parameters used:  $f = 1850.2$  MHz;  $\sigma = 1.4$  mho/m;  $\epsilon_r = 38.7$ ;  $\rho = 1000$  kg/m<sup>3</sup>

Phantom section: Right Section

DASY4 Configuration:

- Probe: ET3DV6 - SN1551; ConvF(5, 5, 5); Calibrated: 2004-04-27
- Sensor-Surface: 4mm (Mechanical And Optical Surface Detection)
- Electronics: DAE3 Sn533; Calibrated: 2003-12-16
- Phantom: SAM 1800/1900 MHz; Type: SAM; Serial: TP-1248
- Measurement SW: DASY4, V4.3 Build 16; Postprocessing SW: SEMCAD, V1.8 Build 123

## **Cheek/Touch, Ch.512, Ant.Fixed, Bat.Standard/Area Scan (51x71x1):**

Measurement grid: dx=20mm, dy=20mm

Maximum value of SAR (interpolated) = 1.17 mW/g

## **Cheek/Touch, Ch.512, Ant.Fixed, Bat.Standard/Zoom Scan (5x5x7)/Cube**

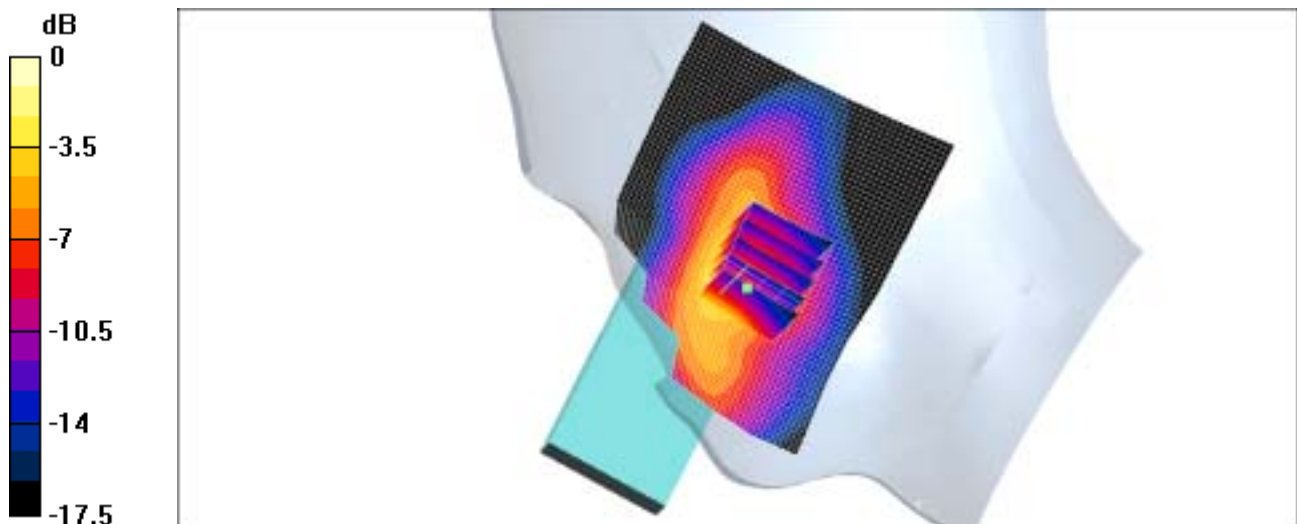
**0:** Measurement grid: dx=8mm, dy=8mm, dz=5mm

Reference Value = 8.03 V/m; Power Drift = -0.0 dB

Peak SAR (extrapolated) = 2.07 W/kg

**SAR(1 g) = 1.2 mW/g**

Maximum value of SAR (measured) = 1.32 mW/g



0 dB = 1.32mW/g

**DUT: SGH-P710; Serial: FB-050-D**

**Program Name: SGH-P710 GSM1900 Right (Job No.: FB-050)**

**Procedure Name: Ear/Tilt, Ch.661, Ant.Fixed, Bat.Standard**

**Procedure Notes: Meas.Tissue Temp(celsius)-21.2; Test Date-31/Aug/2004 [OET Bulletin 65-Supplement C, July 2001]**

Communication System: GSM 1900; Frequency: 1880 MHz;Duty Cycle: 1:8.3

Medium parameters used:  $f = 1880$  MHz;  $\sigma = 1.4$  mho/m;  $\epsilon_r = 38.7$ ;  $\rho = 1000$  kg/m<sup>3</sup>

Phantom section: Right Section

DASY4 Configuration:

- Probe: ET3DV6 - SN1551; ConvF(5, 5, 5); Calibrated: 2004-04-27
- Sensor-Surface: 4mm (Mechanical And Optical Surface Detection)
- Electronics: DAE3 Sn533; Calibrated: 2003-12-16
- Phantom: SAM 1800/1900 MHz; Type: SAM; Serial: TP-1248
- Measurement SW: DASY4, V4.3 Build 16; Postprocessing SW: SEMCAD, V1.8 Build 123

**Ear/Tilt, Ch.661, Ant.Fixed, Bat.Standard/Area Scan (51x71x1):**

Measurement grid: dx=20mm, dy=20mm

Maximum value of SAR (interpolated) = 0.123 mW/g

**Ear/Tilt, Ch.661, Ant.Fixed, Bat.Standard/Zoom Scan 0 (5x5x7)/Cube 0:**

Measurement grid: dx=8mm, dy=8mm, dz=5mm

Reference Value = 8.78 V/m; Power Drift = 0.0 dB

Peak SAR (extrapolated) = 0.149 W/kg

**SAR(1 g) = 0.104 mW/g**

Maximum value of SAR (measured) = 0.111 mW/g

**Ear/Tilt, Ch.661, Ant.Fixed, Bat.Standard/Zoom Scan 1 (5x5x7)/Cube 0:**

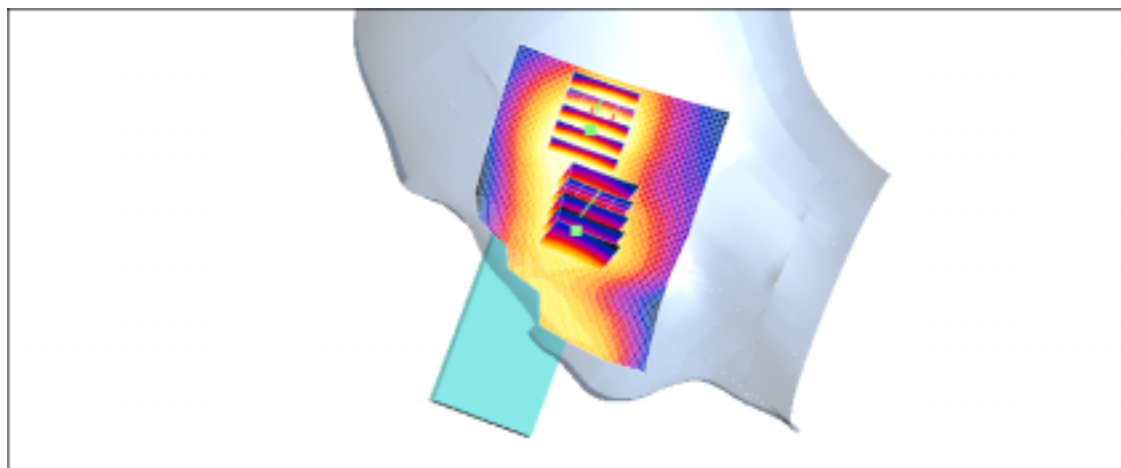
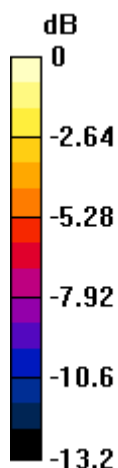
Measurement grid: dx=8mm, dy=8mm, dz=5mm

Reference Value = 8.78 V/m; Power Drift = 0.0 dB

Peak SAR (extrapolated) = 0.105 W/kg

**SAR(1 g) = 0.073 mW/g**

Maximum value of SAR (measured) = 0.079 mW/g



# SAMSUNG FCC ID : A3LSGHP710 -- 1900MHz GSM 1900 Head SAR

**DUT: SGH-P710; Serial: FB-050-D**

**Program Name: SGH-P710 GSM1900 Left (Job No.: FB-050)**

**Procedure Name: Cheek/Touch, Ch.512, Ant.Fixed, Bat.Standard**

**Procedure Notes: Meas.Tissue Temp(celsius)-21.2; Test Date-31/Aug/2004 [OET Bulletin 65-Supplement C, July 2001]**

Communication System: GSM 1900; Frequency: 1850.2 MHz; Duty Cycle: 1:8.3

Medium parameters used:  $f = 1850.2$  MHz;  $\sigma = 1.4$  mho/m;  $\epsilon_r = 38.7$ ;  $\rho = 1000$  kg/m<sup>3</sup>

Phantom section: Left Section

DASY4 Configuration:

- Probe: ET3DV6 - SN1551; ConvF(5, 5, 5); Calibrated: 2004-04-27
- Sensor-Surface: 4mm (Mechanical And Optical Surface Detection)
- Electronics: DAE3 Sn533; Calibrated: 2003-12-16
- Phantom: SAM 1800/1900 MHz; Type: SAM; Serial: TP-1248
- Measurement SW: DASY4, V4.3 Build 16; Postprocessing SW: SEMCAD, V1.8 Build 123

## **Cheek/Touch, Ch.512, Ant.Fixed, Bat.Standard/Area Scan (51x71x1):**

Measurement grid: dx=20mm, dy=20mm

Maximum value of SAR (interpolated) = 0.984 mW/g

## **Cheek/Touch, Ch.512, Ant.Fixed, Bat.Standard/Zoom Scan (5x5x7)/Cube**

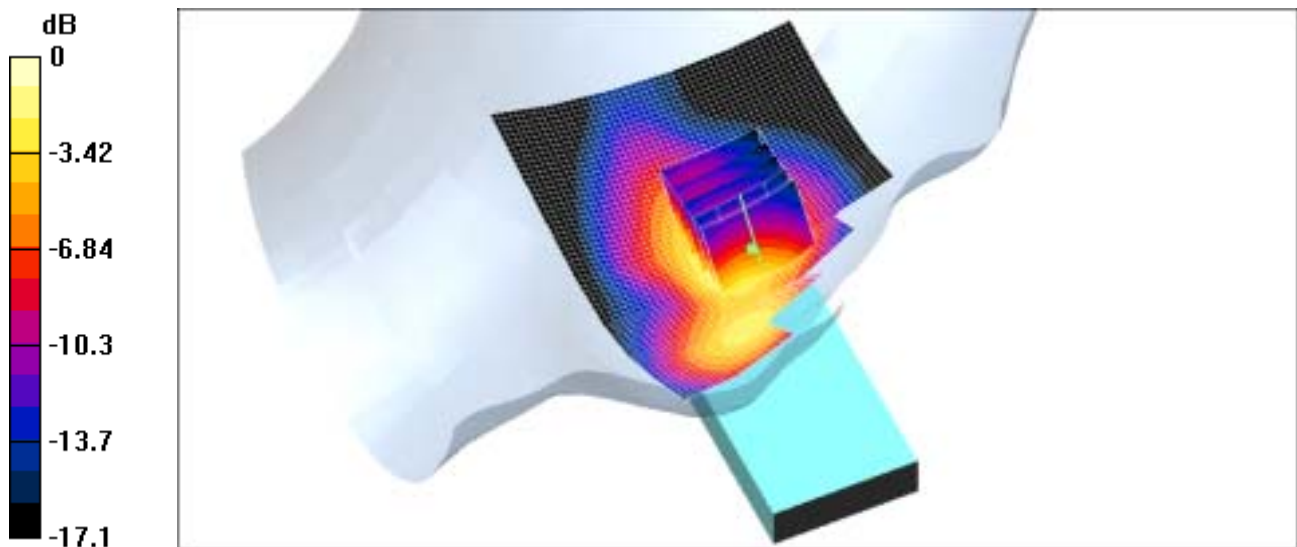
**0:** Measurement grid: dx=8mm, dy=8mm, dz=5mm

Reference Value = 7.34 V/m; Power Drift = 0.1 dB

Peak SAR (extrapolated) = 1.62 W/kg

**SAR(1 g) = 0.972 mW/g**

Maximum value of SAR (measured) = 1.02 mW/g



0 dB = 1.02mW/g

# **SAMSUNG FCC ID : A3LSGHP710 -- 1900MHz GSM 1900 Head SAR**

**DUT: SGH-P710; Serial: FB-050-D**

**Program Name: SGH-P710 GSM1900 Left (Job No.: FB-050)**

**Procedure Name: Ear/Tilt, Ch.661, Ant.Fixed, Bat.Standard**

**Procedure Notes: Meas.Tissue Temp(celsius)-21.2; Test Date-31/Aug/2004 [OET Bulletin 65-Supplement C, July 2001]**

Communication System: GSM 1900; Frequency: 1880 MHz; Duty Cycle: 1:8.3

Medium parameters used:  $f = 1880$  MHz;  $\sigma = 1.4$  mho/m;  $\epsilon_r = 38.7$ ;  $\rho = 1000$  kg/m<sup>3</sup>

Phantom section: Left Section

DASY4 Configuration:

- Probe: ET3DV6 - SN1551; ConvF(5, 5, 5); Calibrated: 2004-04-27
- Sensor-Surface: 4mm (Mechanical And Optical Surface Detection)
- Electronics: DAE3 Sn533; Calibrated: 2003-12-16
- Phantom: SAM 1800/1900 MHz; Type: SAM; Serial: TP-1248
- Measurement SW: DASY4, V4.3 Build 16; Postprocessing SW: SEMCAD, V1.8 Build 123

## **Ear/Tilt, Ch.661, Ant.Fixed, Bat.Standard/Area Scan (61x111x1):**

Measurement grid: dx=15mm, dy=15mm

Maximum value of SAR (interpolated) = 0.108 mW/g

## **Ear/Tilt, Ch.661, Ant.Fixed, Bat.Standard/Zoom Scan (5x5x7)/Cube 0:**

Measurement grid: dx=8mm, dy=8mm, dz=5mm

Reference Value = 7.87 V/m; Power Drift = -0.1 dB

Peak SAR (extrapolated) = 0.127 W/kg

**SAR(1 g) = 0.088 mW/g**

Maximum value of SAR (measured) = 0.098 mW/g

## **Ear/Tilt, Ch.661, Ant.Fixed, Bat.Standard/Zoom Scan 2 (5x5x7)/Cube 0:**

Measurement grid: dx=8mm, dy=8mm, dz=5mm

Reference Value = 7.87 V/m; Power Drift = -0.1 dB

Peak SAR (extrapolated) = 0.116 W/kg

**SAR(1 g) = 0.082 mW/g**

Maximum value of SAR (measured) = 0.088 mW/g

## **Ear/Tilt, Ch.661, Ant.Fixed, Bat.Standard/Zoom Scan 3 (5x5x7)/Cube 0:**

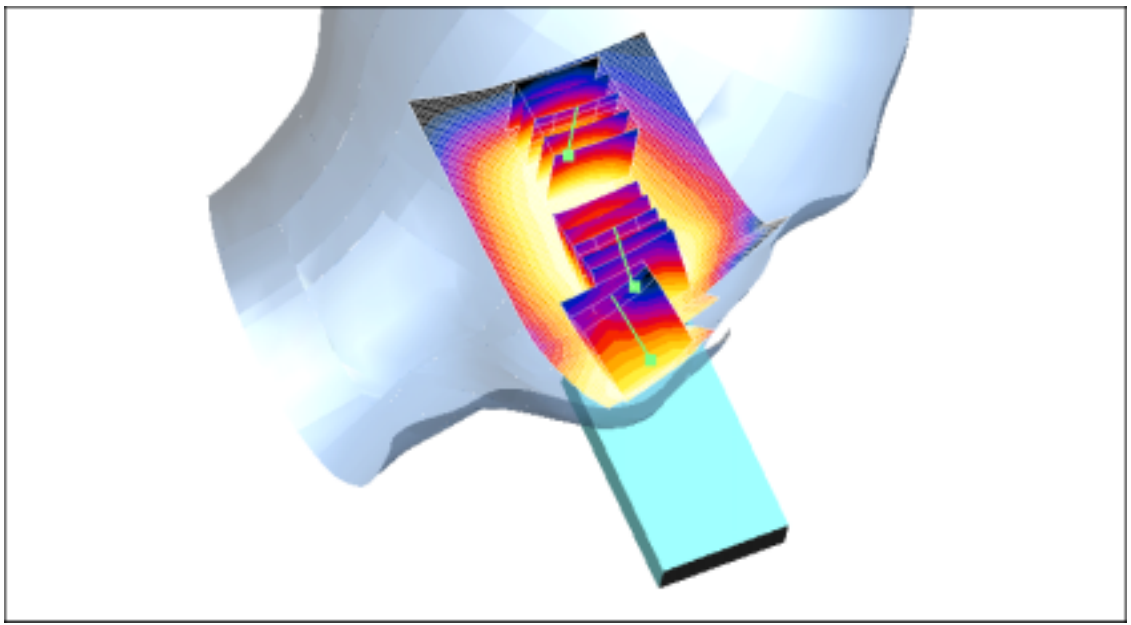
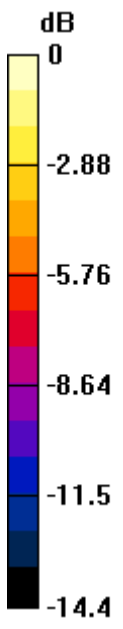
Measurement grid: dx=8mm, dy=8mm, dz=5mm

Reference Value = 7.87 V/m; Power Drift = -0.1 dB

Peak SAR (extrapolated) = 0.086 W/kg

**SAR(1 g) = 0.062 mW/g**

Maximum value of SAR (measured) = 0.066 mW/g



0 dB = 0.066mW/g

# SAMSUNG FCC ID : A3LSGHP710 -- 1900MHz GSM 1900 Body SAR

**DUT: SGH-P710(Body); Serial: FB-050-D**

**Program Name: SGH-P710 GSM1900 Body (Job No.: FB-050)**

**Procedure Name: Body, Ch.0512, Ant.Fixed, Bat.Standard**

**Procedure Notes: Meas.Tissue Temp(celsius)-21.1; Test Date-31/Aug/2004 [OET Bulletin 65-Supplement C, July 2001]**

Communication System: GSM 1900; Frequency: 1850.2 MHz;Duty Cycle: 1:8.3

Medium parameters used:  $f = 1850.2$  MHz;  $\sigma = 1.56$  mho/m;  $\epsilon_r = 51.2$ ;  $\rho = 1000$  kg/m<sup>3</sup>

Phantom section: Flat Section

DASY4 Configuration:

- Probe: ET3DV6 - SN1551; ConvF(4.51, 4.51, 4.51); Calibrated: 2004-04-27
- Sensor-Surface: 4mm (Mechanical And Optical Surface Detection)
- Electronics: DAE3 Sn533; Calibrated: 2003-12-16
- Phantom: SAM 1800/1900 MHz; Type: SAM; Serial: TP-1248
- Measurement SW: DASY4, V4.3 Build 16; Postprocessing SW: SEMCAD, V1.8 Build 123

**Body, Ch.0512, Ant.Fixed, Bat.Standard/Area Scan (51x71x1):** Measurement grid: dx=20mm, dy=20mm

Maximum value of SAR (interpolated) = 0.374 mW/g

**Body, Ch.0512, Ant.Fixed, Bat.Standard/Zoom Scan (5x5x7)/Cube 0:**

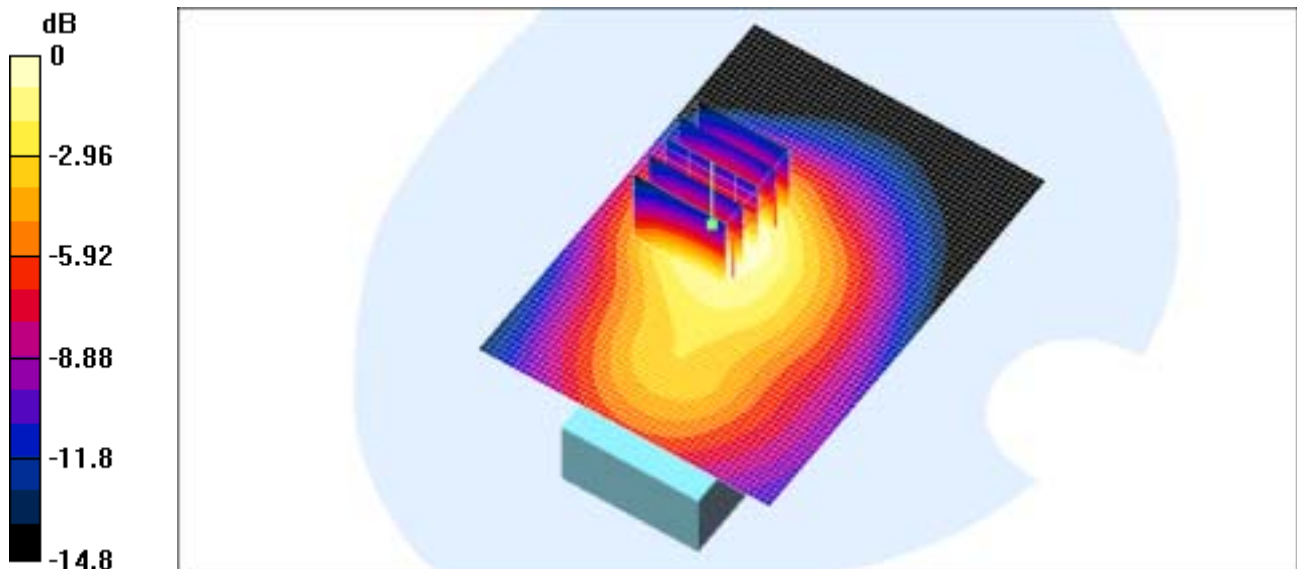
Measurement grid: dx=8mm, dy=8mm, dz=5mm

Reference Value = 13 V/m; Power Drift = 0.003 dB

Peak SAR (extrapolated) = 0.486 W/kg

**SAR(1 g) = 0.329 mW/g**

Maximum value of SAR (measured) = 0.354 mW/g



0 dB = 0.354mW/g

# SAMSUNG FCC ID : A3LSGHP710 -- 1900MHz GPRS 1900 Body SAR

**DUT: SGH-P710(Body); Serial: FB-050-D**

**Program Name: SGH-P710 GPRS1900 Body (Job No.: FB-050)**

**Procedure Name: Body, Ch.0512, Ant.Fixed, Bat.Standard**

**Procedure Notes: Meas.Tissue Temp(celsius)-21.1; Test Date-31/Aug/2004 [OET Bulletin 65-Supplement C, July 2001]**

Communication System: Body GPRS ; Frequency: 1850.2 MHz;Duty Cycle: 1:4.15

Medium parameters used:  $f = 1850.2$  MHz;  $\sigma = 1.56$  mho/m;  $\epsilon_r = 51.2$ ;  $\rho = 1000$  kg/m<sup>3</sup>

Phantom section: Flat Section

DASY4 Configuration:

- Probe: ET3DV6 - SN1551; ConvF(4.51, 4.51, 4.51); Calibrated: 2004-04-27
- Sensor-Surface: 4mm (Mechanical And Optical Surface Detection)
- Electronics: DAE3 Sn533; Calibrated: 2003-12-16
- Phantom: SAM 1800/1900 MHz; Type: SAM; Serial: TP-1248
- Measurement SW: DASY4, V4.3 Build 16; Postprocessing SW: SEMCAD, V1.8 Build 123

**Body, Ch.0512, Ant.Fixed, Bat.Standard/Area Scan (51x71x1):** Measurement grid: dx=20mm, dy=20mm

Maximum value of SAR (interpolated) = 0.767 mW/g

**Body, Ch.0512, Ant.Fixed, Bat.Standard/Zoom Scan (5x5x7)/Cube 0:**

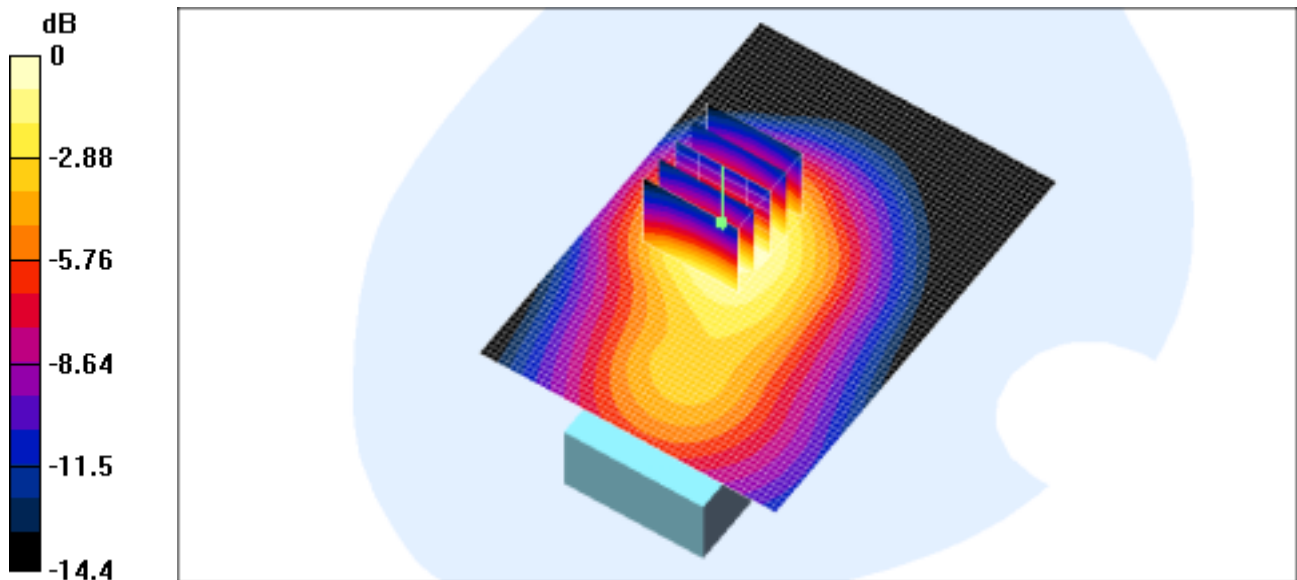
Measurement grid: dx=8mm, dy=8mm, dz=5mm

Reference Value = 18.7 V/m; Power Drift = -0.1 dB

Peak SAR (extrapolated) = 0.999 W/kg

**SAR(1 g) = 0.679 mW/g**

Maximum value of SAR (measured) = 0.741 mW/g



0 dB = 0.741mW/g

# SAMSUNG FCC ID : A3LSGHP710 -- 1900MHz GSM1900 Head SAR

**DUT: SGH-P710; Serial: FB-050-D**

**Program Name: SGH-P710 GSM1900 Right (Job No.: FB-050)**

**Procedure Name: Cheek/Touch, Ch.512, Ant.Fixed, Bat.Standard**

**Procedure Notes: Meas.Tissue Temp(celsius)-21.2; Test Date-31/Aug/2004 [OET Bulletin 65-Supplement C, July 2001]**

Communication System: GSM 1900; Frequency: 1850.2 MHz; Duty Cycle: 1:8.3

Medium parameters used:  $f = 1850.2$  MHz;  $\sigma = 1.4$  mho/m;  $\epsilon_r = 38.7$ ;  $\rho = 1000$  kg/m<sup>3</sup>

Phantom section: Right Section

DASY4 Configuration:

- Probe: ET3DV6 - SN1551; ConvF(5, 5, 5); Calibrated: 2004-04-27
- Sensor-Surface: 4mm (Mechanical And Optical Surface Detection)
- Electronics: DAE3 Sn533; Calibrated: 2003-12-16
- Phantom: SAM 1800/1900 MHz; Type: SAM; Serial: TP-1248
- Measurement SW: DASY4, V4.3 Build 16; Postprocessing SW: SEMCAD, V1.8 Build 123

## **Cheek/Touch, Ch.512, Ant.Fixed, Bat.Standard/Area Scan (51x71x1):**

Measurement grid: dx=20mm, dy=20mm

Maximum value of SAR (interpolated) = 1.17 mW/g

## **Cheek/Touch, Ch.512, Ant.Fixed, Bat.Standard/Zoom Scan (5x5x7)/Cube**

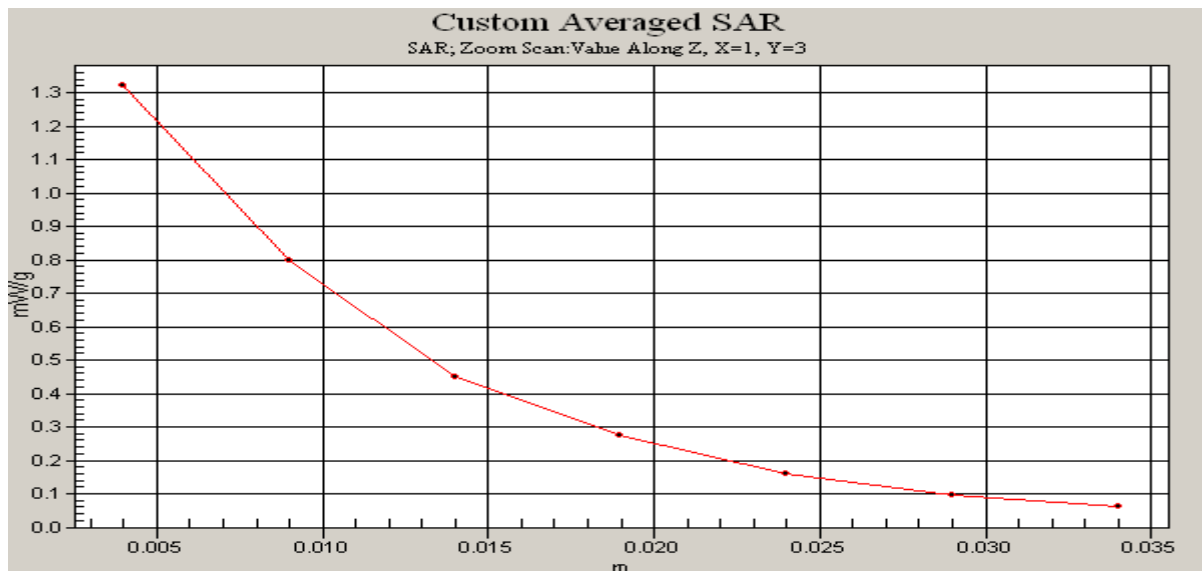
**0:** Measurement grid: dx=8mm, dy=8mm, dz=5mm

Reference Value = 8.03 V/m; Power Drift = -0.0 dB

Peak SAR (extrapolated) = 2.07 W/kg

**SAR(1 g) = 1.2 mW/g**

Maximum value of SAR (measured) = 1.32 mW/g



# SAMSUNG FCC ID : A3LSGHP710 -- 1900MHz GPRS 1900 Body SAR

**DUT: SGH-P710(Body); Serial: FB-050-D**

**Program Name: SGH-P710 GPRS1900 Body (Job No.: FB-050)**

**Procedure Name: Body, Ch.0512, Ant.Fixed, Bat.Standard**

**Procedure Notes: Meas.Tissue Temp(celsius)-21.1; Test Date-31/Aug/2004 [OET Bulletin 65-Supplement C, July 2001]**

Communication System: Body GPRS ; Frequency: 1850.2 MHz;Duty Cycle: 1:4.15

Medium parameters used:  $f = 1850.2$  MHz;  $\sigma = 1.56$  mho/m;  $\epsilon_r = 51.2$ ;  $\rho = 1000$  kg/m<sup>3</sup>

Phantom section: Flat Section

DASY4 Configuration:

- Probe: ET3DV6 - SN1551; ConvF(4.51, 4.51, 4.51); Calibrated: 2004-04-27
- Sensor-Surface: 4mm (Mechanical And Optical Surface Detection)
- Electronics: DAE3 Sn533; Calibrated: 2003-12-16
- Phantom: SAM 1800/1900 MHz; Type: SAM; Serial: TP-1248
- Measurement SW: DASY4, V4.3 Build 16; Postprocessing SW: SEMCAD, V1.8 Build 123

**Body, Ch.0512, Ant.Fixed, Bat.Standard/Area Scan (51x71x1):** Measurement grid: dx=20mm, dy=20mm

Maximum value of SAR (interpolated) = 0.767 mW/g

**Body, Ch.0512, Ant.Fixed, Bat.Standard/Zoom Scan (5x5x7)/Cube 0:**

Measurement grid: dx=8mm, dy=8mm, dz=5mm

Reference Value = 18.7 V/m; Power Drift = -0.1 dB

Peak SAR (extrapolated) = 0.999 W/kg

**SAR(1 g) = 0.679 mW/g**

Maximum value of SAR (measured) = 0.741 mW/g

