

SAMSUNG FCC ID: A3LSGHP500 -- 1900MHz. PCS GSM Head SAR

SAM Phantom; Right Cheek(CRP) Section; Probe:ET3DV6 - SN1735; ConvF(5.50,5.50,5.50)

Head 1900 MHz: $\sigma = 1.35$ mho/m $\epsilon_r = 39.5$ $\rho = 1.00$ g/cm³; Antenna Position -- Fixed; Crest Factor 8.0

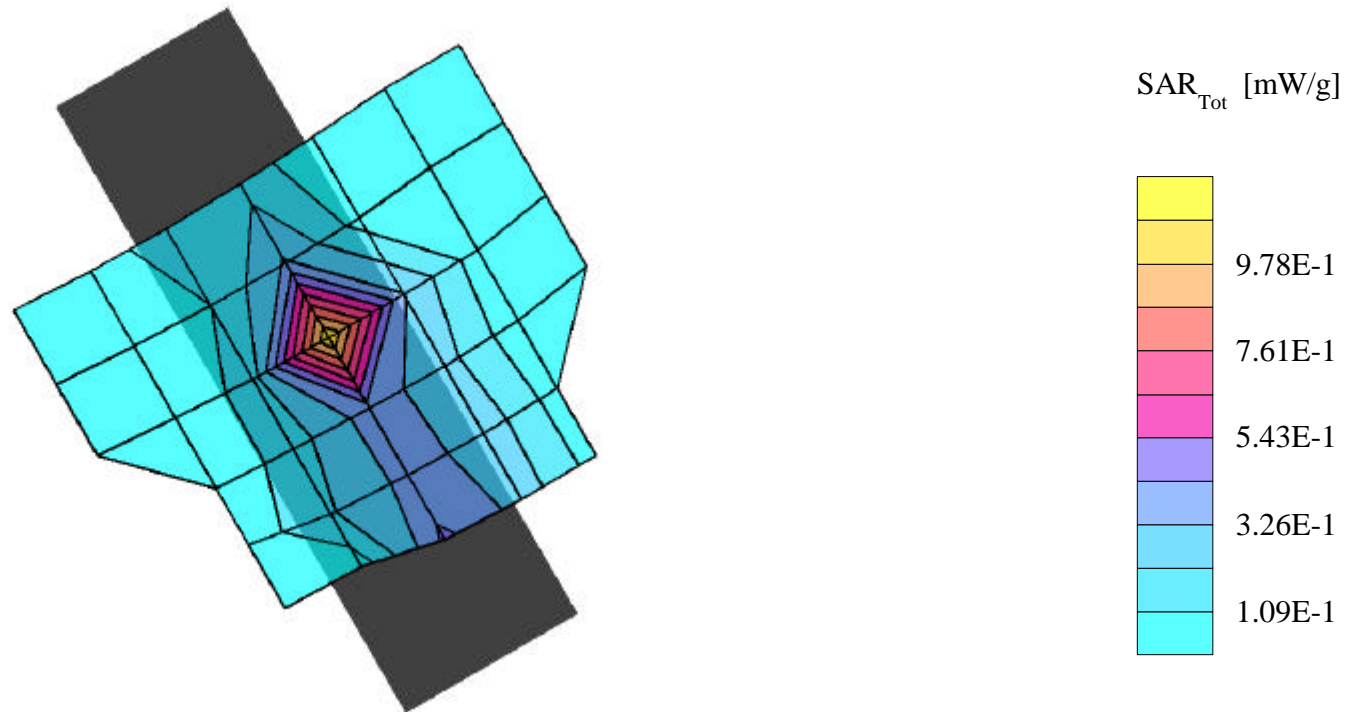
SAR (1g): 1.01 mW/g

SAMSUNG Single-Band PCS Only Phone Model: SGH-P500

GSM 1900 Mode, Ch.661 [1880MHz]; Slim Battery, Ambient Temp. (°C) - 22.5

Conducted Power=30dBm; Right Head Phantom, Cheek/Touch Position; Meas. Tissue Temp. (°C) - 22.2

Test Date--08/25/2003 [FCC/OET Bulletin 65-Supplement C, July 2001]



SAMSUNG FCC ID: A3LSGHP500 -- 1900MHz. PCS GSM Head SAR

SAM Phantom; Right Hand Section; Probe:ET3DV6 - SN1735; ConvF(5.50,5.50,5.50)

Head 1900 MHz: $\sigma = 1.35$ mho/m $\epsilon_r = 39.5$ $\rho = 1.00$ g/cm³; Antenna Position -- Fixed; Crest Factor 8.0

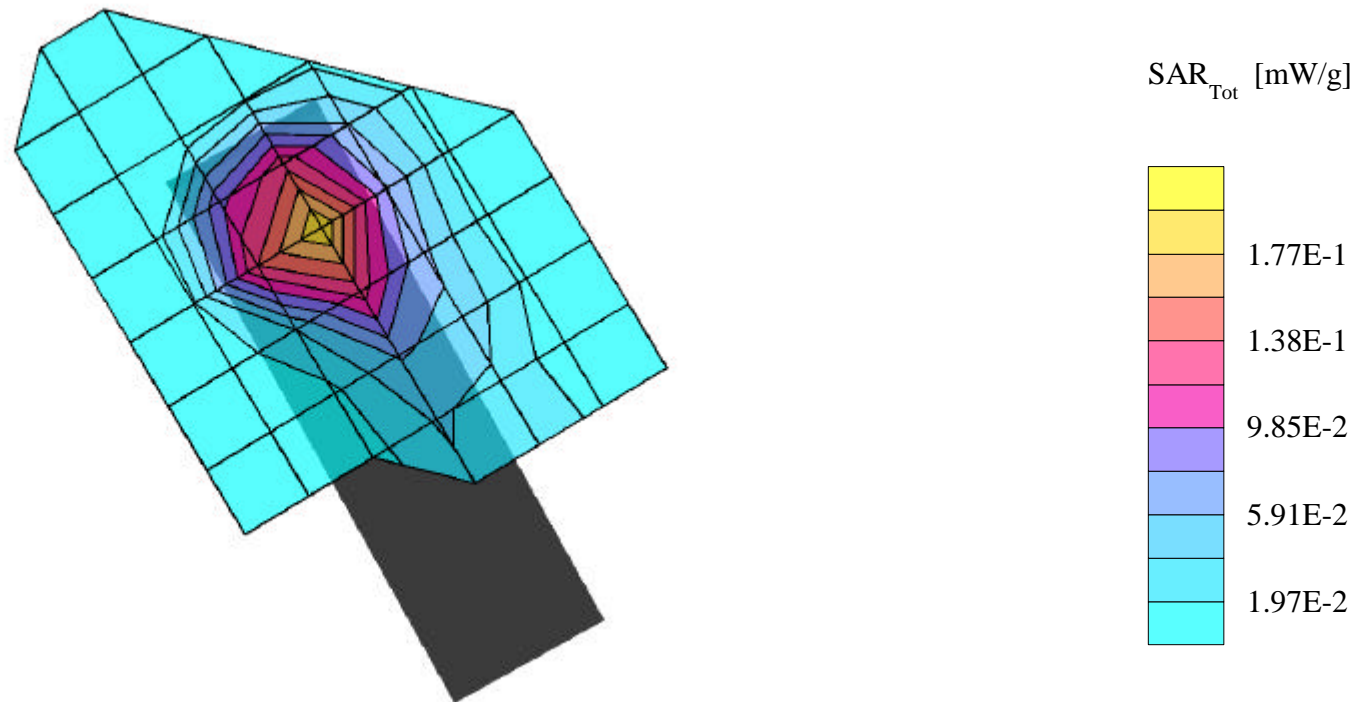
SAR (1g): 0.190 mW/g

SAMSUNG Single-Band PCS Only Phone Model: SGH-P500

GSM 1900 Mode, Ch.661 [1880MHz]; Slim Battery, Ambient Temp. (°C) - 22.5

Conducted Power=30dBm; Right Head Phantom, Ear/Tilt 15 deg Position; Meas. Tissue Temp. (°C) - 22.2

Test Date--08/25/2003 [FCC/OET Bulletin 65-Supplement C, July 2001]



SAMSUNG FCC ID: A3LSGHP500 -- 1900MHz. PCS GSM Head SAR

SAM Phantom; Left Cheek(CRP) Section; Probe:ET3DV6 - SN1735; ConvF(5.50,5.50,5.50)

Head 1900 MHz: $\sigma = 1.35$ mho/m $\epsilon_r = 39.5$ $\rho = 1.00$ g/cm³; Antenna Position -- Fixed; Crest Factor 8.0

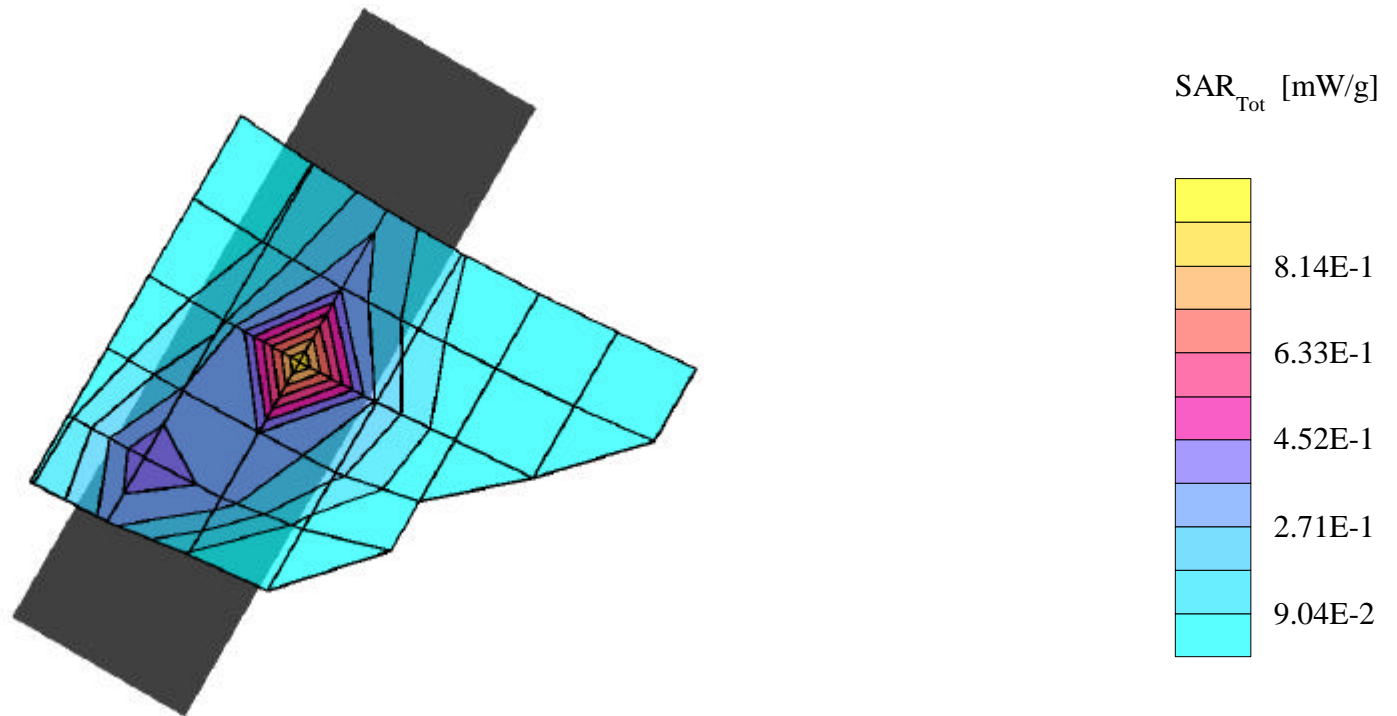
SAR (1g): 0.792 mW/g

SAMSUNG Single-Band PCS Only Phone Model: SGH-P500

GSM 1900 Mode, Ch.661 [1880MHz]; Slim Battery, Ambient Temp. (°C) - 22.5

Conducted Power=30dBm; Left Head Phantom, Cheek/Touch Position; Meas. Tissue Temp. (°C) - 22.2

Test Date--08/25/2003 [FCC/OET Bulletin 65-Supplement C, July 2001]



SAMSUNG FCC ID: A3LSGHP500 -- 1900MHz. PCS GSM Head SAR

SAM Phantom; Left Hand Section; Probe:ET3DV6 - SN1735; ConvF(5.50,5.50,5.50)

Head 1900 MHz: $\sigma = 1.35$ mho/m $\epsilon_r = 39.5$ $\rho = 1.00$ g/cm³ ; Antenna Position --Fixed; Crest Factor 8.0

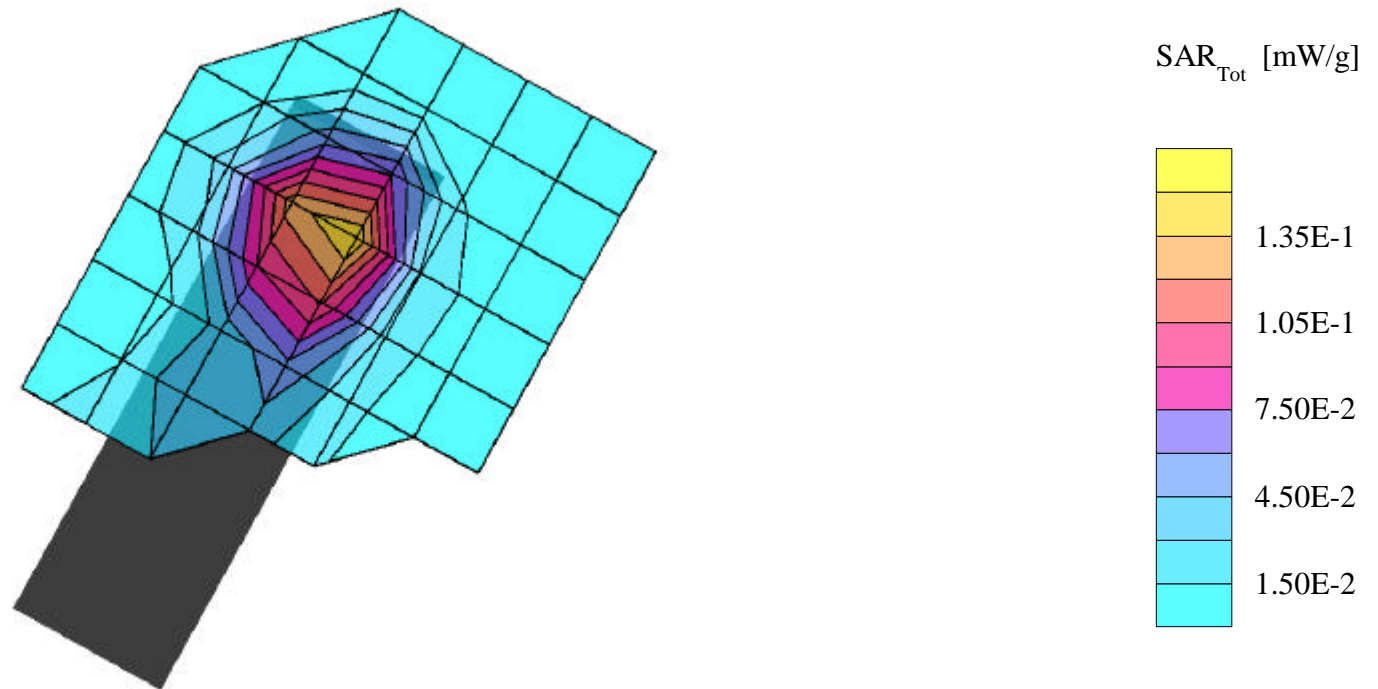
SAR (1g): 0.158 mW/g

SAMSUNG Single-Band PCS Only Phone Model: SGH-P500

GSM 1900 Mode, Ch.661 [1880MHz]; Slim Battery, Ambient Temp. (°C) - 22.5

Conducted Power=30dBm; Left Head Phantom, Ear/Tilt 15 deg Position; Meas. Tissue Temp. (°C) - 22.2

Test Date--08/25/2003 [FCC/OET Bulletin 65-Supplement C, July 2001]



SAMSUNG FCC ID: A3LSGHP500 -- 1900MHz. PCS GSM Body SAR

SAM Phantom; Flat Section; Probe:ET3DV6 - SN1735; ConvF(5.00,5.00,5.00)

Body 1900 MHz: $\sigma = 1.54$ mho/m $\epsilon_r = 51.5$ $\rho = 1.00$ g/cm³; Antenna Position -- Fixed; Crest Factor 8.0

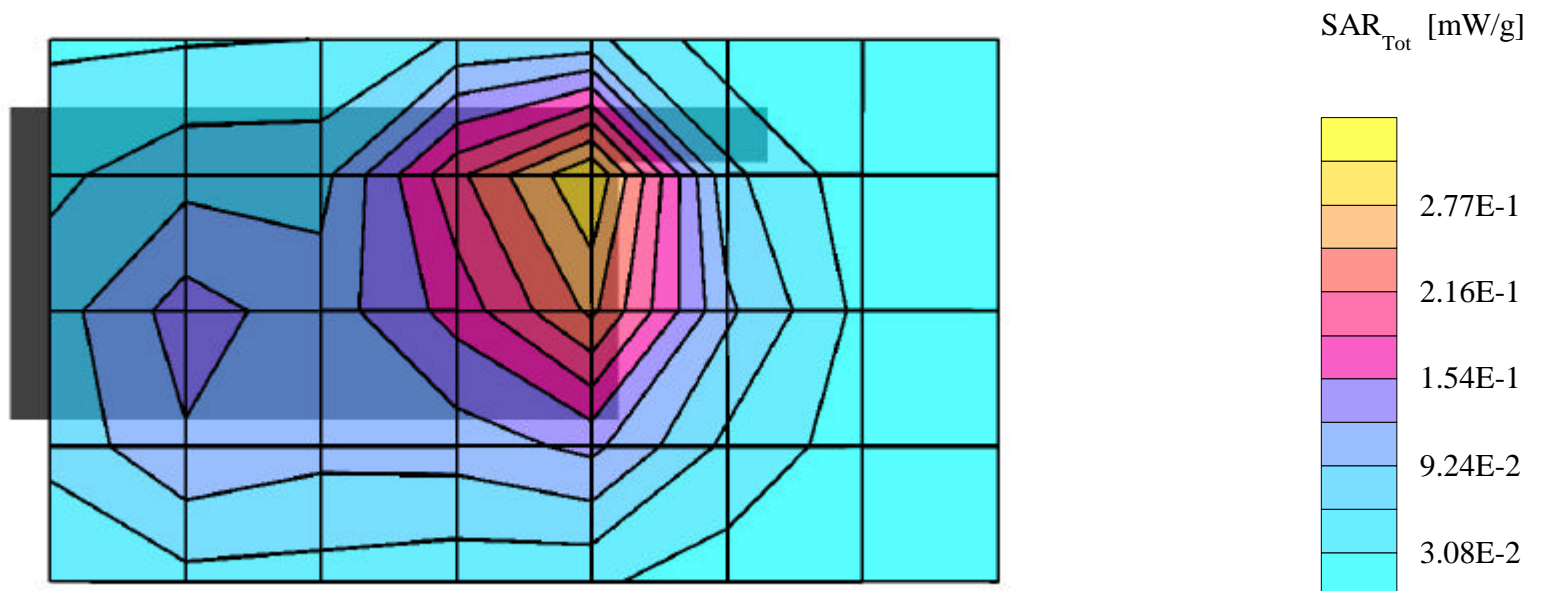
SAR (1g): 0.312 mW/g

SAMSUNG Single-Band PCS Only Phone Model: SGH-P500

GSM 1900 Mode, Ch.661 [1880MHz]; Slim Battery, Ambient Temp. (°C) - 22.9

Conducted Power=30dBm; Spacing=1.5cm from flat phantom to phone, with holster, Tissue Temp. (°C) - 22.1

Test Date--08/26/2003 [FCC/OET Bulletin 65-Supplement C, July 2001]



SAMSUNG FCC ID: A3LSGHP500 -- 1900MHz. PCS GSM Head SAR

SAM Phantom; Right Cheek(CRP) Section; Probe:ET3DV6 - SN1735; ConvF(5.50,5.50,5.50)

Head 1900 MHz: $\sigma = 1.35$ mho/m $\epsilon_r = 39.5$ $\rho = 1.00$ g/cm³; Antenna Position -- Fixed; Crest Factor 8.0

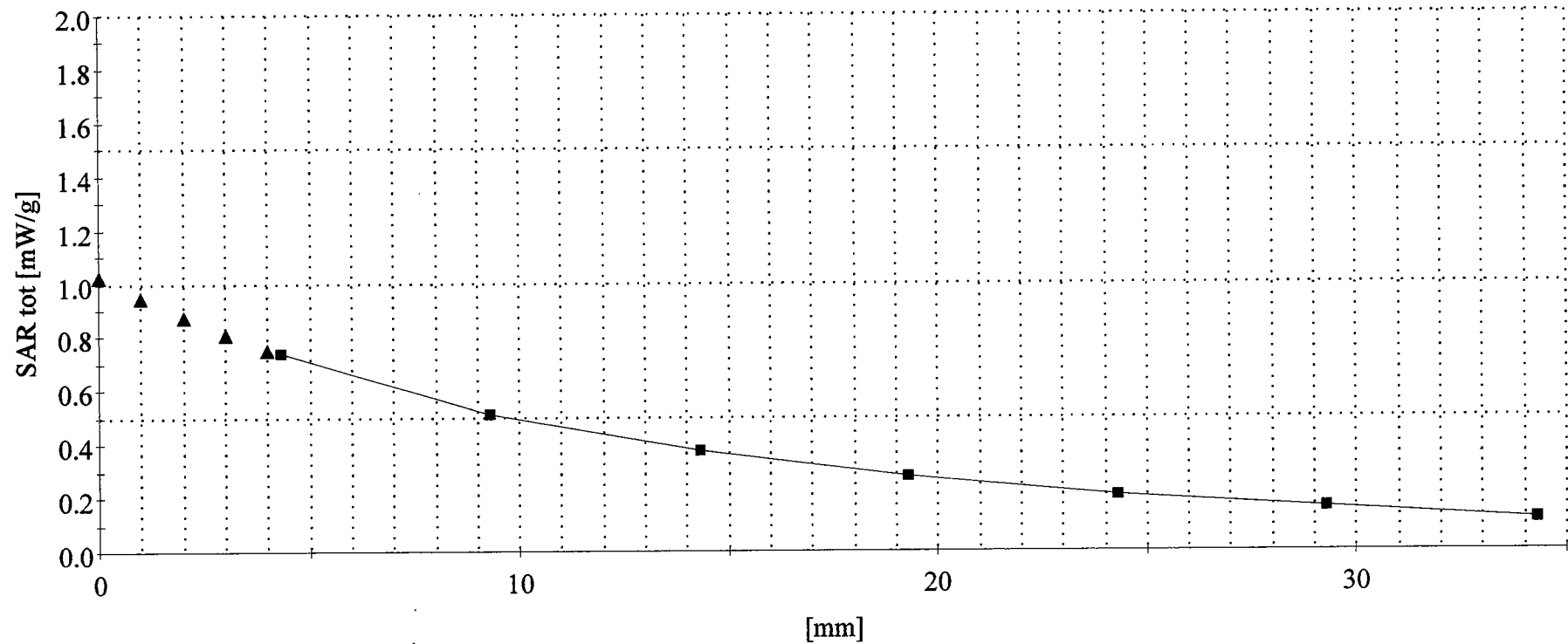
SAR (1g): 1.01 mW/g

SAMSUNG Single-Band PCS Only Phone Model: SGH-P500

GSM 1900 Mode, Ch.661 [1880MHz]; Slim Battery, Ambient Temp. (°C) - 22.5

Conducted Power=30dBm; Right Head Phantom, Cheek/Touch Position; Meas. Tissue Temp. (°C) - 22.2

Test Date--08/25/2003 [FCC/OET Bulletin 65-Supplement C, July 2001]



SAMSUNG FCC ID: A3LSGHP500 -- 1900MHz. PCS GSM Body SAR

SAM Phantom; Flat Section; Probe:ET3DV6 - SN1735; ConvF(5.00,5.00,5.00)

Body 1900 MHz: $\sigma = 1.54$ mho/m $\epsilon_r = 51.5$ $\rho = 1.00$ g/cm³; Antenna Position -- Fixed; Crest Factor 8.0

SAR (1g): 0.312 mW/g

SAMSUNG Single-Band PCS Only Phone Model: SGH-P500

GSM 1900 Mode, Ch.661 [1880MHz]; Slim Battery, Ambient Temp. (°C) - 22.9

Conducted Power=30dBm; Spacing=1.5cm from flat phantom to phone, with holster, Tissue Temp. (°C) - 22.1

Test Date--08/26/2003 [FCC/OET Bulletin 65-Supplement C, July 2001]

