

SAMSUNG FCC ID : A3LSGHP300 1900MHz GSM1900 Head SAR

DUT: SGH-P300; Serial: FC-143-F

Program Name: SGH-P300 GSM1900 Right (Job No. : FC-143)

Procedure Name: Cheek/Touch, Ch.512, Ant.Intenna, Bat.Standard

Procedure Notes: Meas.Ambient Temp(celsius)-22.1; Tissue Temp(celsius)-21.9; Test Date-19/Oct/2005 [OET Bulletin 65-Supplement C, July 2001]

Communication System: GSM 1900; Frequency: 1850.2 MHz;Duty Cycle: 1:8.3

Medium parameters used:  $f = 1850.2$  MHz;  $\sigma = 1.38$  mho/m;  $\epsilon_r = 39.9$ ;  $\rho = 1000$  kg/m<sup>3</sup>

Phantom section: Right Section

DASY4 Configuration:

- Probe: EX3DV4 - SN3537; ConvF(8.29, 8.29, 8.29); Calibrated: 2004-12-15
- Sensor-Surface: 4mm (Mechanical Surface Detection)
- Electronics: DAE3 Sn468; Calibrated: 2004-12-07
- Phantom: SAM 1800/1900 MHz; Type: SAM; Serial: TP-1248
- Measurement SW: DASY4, V4.6 Build 19; Postprocessing SW: SEMCAD, V1.8 Build 159

**Cheek/Touch, Ch.512, Ant.Intenna, Bat.Standard/Area Scan (51x71x1):** Measurement grid: dx=20mm, dy=20mm

Maximum value of SAR (interpolated) = 1.41 mW/g

**Cheek/Touch, Ch.512, Ant.Intenna, Bat.Standard/Zoom Scan (5x5x7)/Cube 0:**

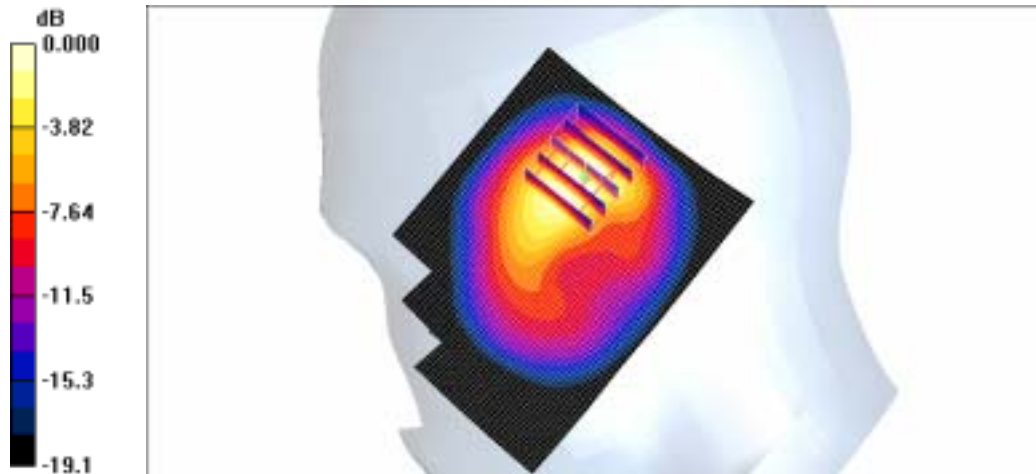
Measurement grid: dx=8mm, dy=8mm, dz=5mm

Reference Value = 16.2 V/m; Power Drift = 0.003 dB

Peak SAR (extrapolated) = 2.39 W/kg

**SAR(1 g) = 1.25 mW/g**

Maximum value of SAR (measured) = 1.35 mW/g



0 dB = 1.35mW/g

SAMSUNG FCC ID : A3LSGHP300 1900MHz GSM1900 Head SAR

DUT: SGH-P300; Serial: FC-143-F

Program Name: SGH-P300 GSM1900 Right (Job No. : FC-143)

Procedure Name: Ear/Tilt, Ch.661, Ant.Intenna, Bat.Standard

Procedure Notes: Meas.Ambient Temp(celsius)-22.1; Tissue Temp(celsius)-21.9; Test Date-19/Oct/2005 [OET Bulletin 65-Supplement C, July 2001]

Communication System: GSM 1900; Frequency: 1880 MHz;Duty Cycle: 1:8.3

Medium parameters used:  $f = 1880$  MHz;  $\sigma = 1.38$  mho/m;  $\epsilon_r = 39.9$ ;  $\rho = 1000$  kg/m<sup>3</sup>

Phantom section: Right Section

DASY4 Configuration:

- Probe: EX3DV4 - SN3537; ConvF(8.29, 8.29, 8.29); Calibrated: 2004-12-15
- Sensor-Surface: 4mm (Mechanical Surface Detection)
- Electronics: DAE3 Sn468; Calibrated: 2004-12-07
- Phantom: SAM 1800/1900 MHz; Type: SAM; Serial: TP-1248
- Measurement SW: DASY4, V4.6 Build 19; Postprocessing SW: SEMCAD, V1.8 Build 159

Ear/Tilt, Ch.661, Ant.Intenna, Bat.Standard/Area Scan (51x71x1): Measurement grid: dx=20mm, dy=20mm

Maximum value of SAR (interpolated) = 1.05 mW/g

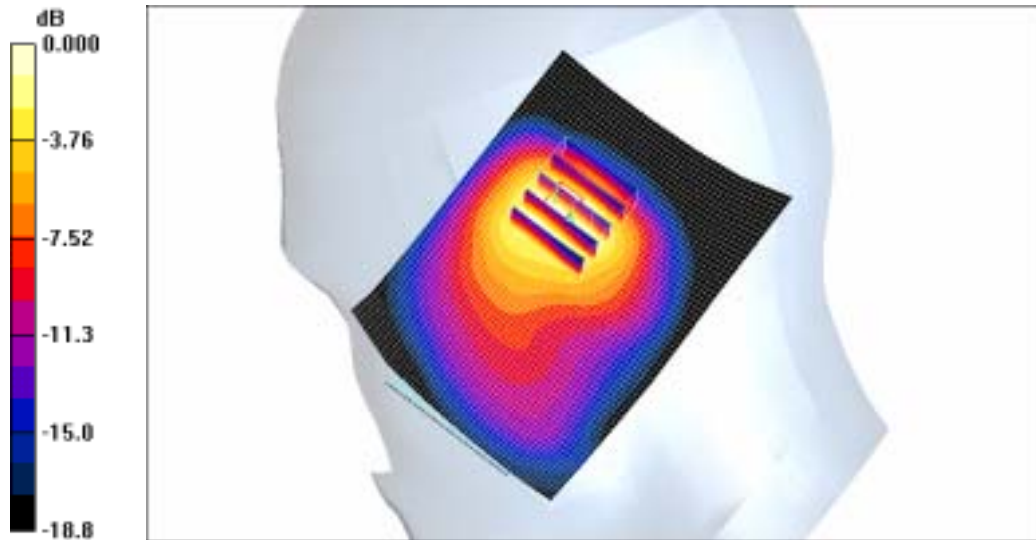
Ear/Tilt, Ch.661, Ant.Intenna, Bat.Standard/Zoom Scan (5x5x7)/Cube 0: Measurement grid: dx=8mm, dy=8mm, dz=5mm

Reference Value = 16.2 V/m; Power Drift = 0.057 dB

Peak SAR (extrapolated) = 1.42 W/kg

**SAR(1 g) = 0.770 mW/g**

Maximum value of SAR (measured) = 0.862 mW/g



0 dB = 0.862mW/g

SAMSUNG FCC ID : A3LSGHP300 1900MHz GSM1900 Head SAR

DUT: SGH-P300; Serial: FC-143-F

Program Name: SGH-P300 GSM1900 Left (Job No. : FC-143)

Procedure Name: Cheek/Touch, Ch.512, Ant.Intenna, Bat.Standard

Procedure Notes: Meas.Ambient Temp(celsius)-22.1; Tissue Temp(celsius)-21.9; Test Date-19/Oct/2005 [OET Bulletin 65-Supplement C, July 2001]

Communication System: GSM 1900; Frequency: 1850.2 MHz;Duty Cycle: 1:8.3

Medium parameters used:  $f = 1850.2$  MHz;  $\sigma = 1.38$  mho/m;  $\epsilon_r = 39.9$ ;  $\rho = 1000$  kg/m<sup>3</sup>

Phantom section: Left Section

DASY4 Configuration:

- Probe: EX3DV4 - SN3537; ConvF(8.29, 8.29, 8.29); Calibrated: 2004-12-15
- Sensor-Surface: 4mm (Mechanical Surface Detection)
- Electronics: DAE3 Sn468; Calibrated: 2004-12-07
- Phantom: SAM 1800/1900 MHz; Type: SAM; Serial: TP-1248
- Measurement SW: DASY4, V4.6 Build 19; Postprocessing SW: SEMCAD, V1.8 Build 159

**Cheek/Touch, Ch.512, Ant.Intenna, Bat.Standard/Zoom Scan (5x5x7)/Cube 0:**

Measurement grid: dx=8mm, dy=8mm, dz=5mm

Reference Value = 17.9 V/m; Power Drift = -0.024 dB

Peak SAR (extrapolated) = 1.10 W/kg

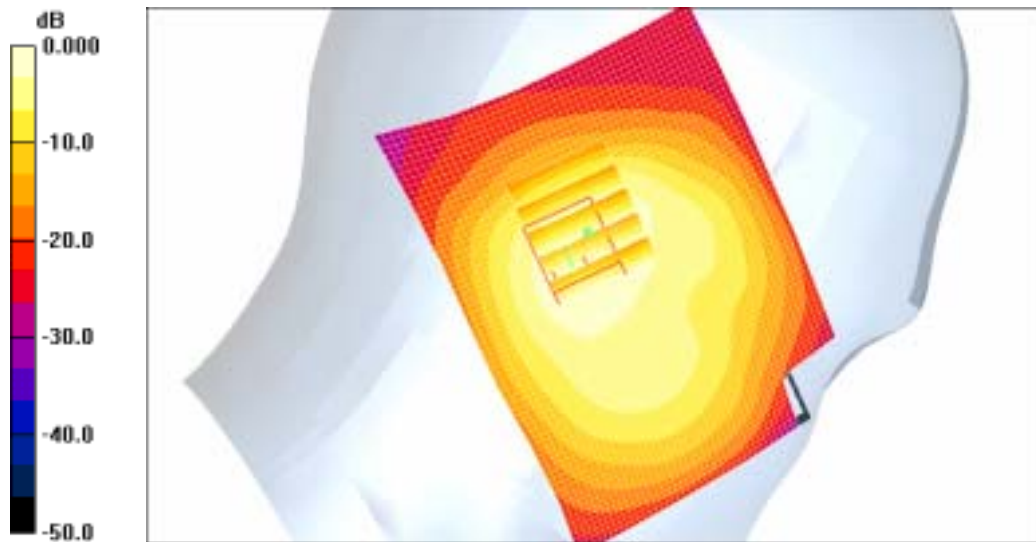
**SAR(1 g) = 0.660 mW/g**

Maximum value of SAR (measured) = 0.719 mW/g

**Cheek/Touch, Ch.512, Ant.Intenna, Bat.Standard/Area Scan (51x71x1):** Measurement

grid: dx=20mm, dy=20mm

Maximum value of SAR (interpolated) = 0.883 mW/g



0 dB = 0.883mW/g

SAMSUNG FCC ID : A3LSGHP300 1900MHz GSM1900 Head SAR

DUT: SGH-P300; Serial: FC-143-F

Program Name: SGH-P300 GSM1900 Left (Job No. : FC-143)

Procedure Name: Ear/Tilt, Ch.661, Ant.Intenna, Bat.Standard

Procedure Notes: Meas.Ambient Temp(celsius)-22.1; Tissue Temp(celsius)-21.9; Test Date-19/Oct/2005 [OET Bulletin 65-Supplement C, July 2001]

Communication System: GSM 1900; Frequency: 1880 MHz;Duty Cycle: 1:8.3

Medium parameters used:  $f = 1880$  MHz;  $\sigma = 1.38$  mho/m;  $\epsilon_r = 39.9$ ;  $\rho = 1000$  kg/m<sup>3</sup>

Phantom section: Left Section

DASY4 Configuration:

- Probe: EX3DV4 - SN3537; ConvF(8.29, 8.29, 8.29); Calibrated: 2004-12-15
- Sensor-Surface: 4mm (Mechanical Surface Detection)
- Electronics: DAE3 Sn468; Calibrated: 2004-12-07
- Phantom: SAM 1800/1900 MHz; Type: SAM; Serial: TP-1248
- Measurement SW: DASY4, V4.6 Build 19; Postprocessing SW: SEMCAD, V1.8 Build 159

Ear/Tilt, Ch.661, Ant.Intenna, Bat.Standard/Area Scan (51x71x1): Measurement grid: dx=20mm, dy=20mm

Maximum value of SAR (interpolated) = 0.736 mW/g

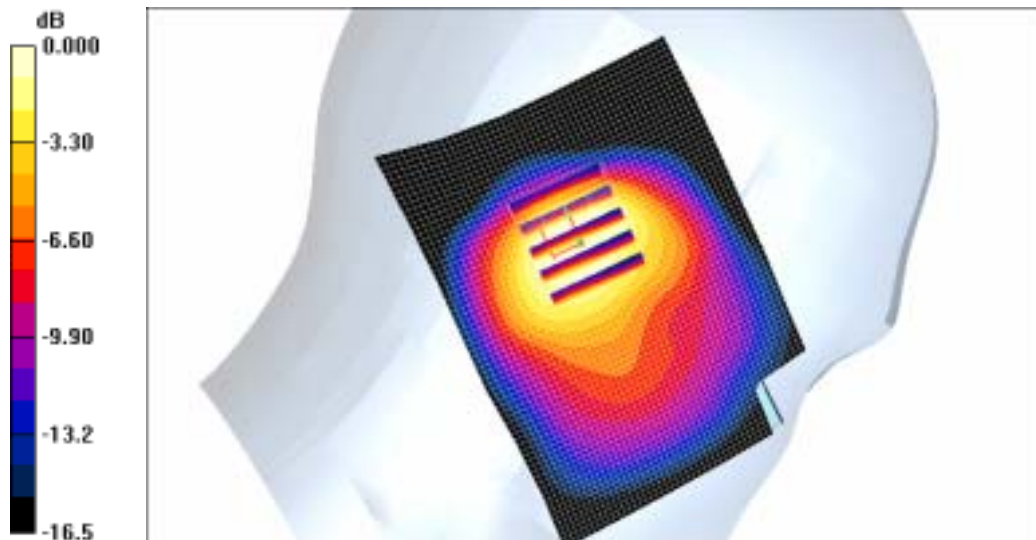
Ear/Tilt, Ch.661, Ant.Intenna, Bat.Standard/Zoom Scan (5x5x7)/Cube 0: Measurement grid: dx=8mm, dy=8mm, dz=5mm

Reference Value = 18.4 V/m; Power Drift = 0.030 dB

Peak SAR (extrapolated) = 0.807 W/kg

**SAR(1 g) = 0.482 mW/g**

Maximum value of SAR (measured) = 0.512 mW/g



0 dB = 0.512mW/g

SAMSUNG FCC ID : A3LSGHP300 1900MHz GPRS1900 Body SAR

DUT: SGH-P300; Serial: FC-143-F

Program Name: SGH-P300 GSM1900 Body (Job No. : FC-143)

Procedure Name: Body, Ch.512, Ant.Intenna, Bat.Standard

Procedure Notes: Meas.Ambient Temp(celsius)-22.1; Tissue Temp(celsius)-21.9; Test Date-19/Oct/2005 [OET Bulletin 65-Supplement C, July 2001]

Communication System: Body GPRS ; Frequency: 1850.2 MHz;Duty Cycle: 1:4.15

Medium parameters used:  $f = 1850.2$  MHz;  $\sigma = 1.51$  mho/m;  $\epsilon_r = 52.4$ ;  $\rho = 1000$  kg/m<sup>3</sup>

Phantom section: Flat Section

DASY4 Configuration:

- Probe: EX3DV4 - SN3537; ConvF(7.76, 7.76, 7.76); Calibrated: 2004-12-15
- Sensor-Surface: 4mm (Mechanical Surface Detection)
- Electronics: DAE3 Sn468; Calibrated: 2004-12-07
- Phantom: SAM 1800/1900 MHz; Type: SAM; Serial: TP-1248
- Measurement SW: DASY4, V4.6 Build 19; Postprocessing SW: SEMCAD, V1.8 Build 159

**Body, Ch.512, Ant.Intenna, Bat.Standard/Zoom Scan (5x5x7)/Cube 0:** Measurement grid:

$dx=8$ mm,  $dy=8$ mm,  $dz=5$ mm

Reference Value = 8.20 V/m; Power Drift = 0.046 dB

Peak SAR (extrapolated) = 0.471 W/kg

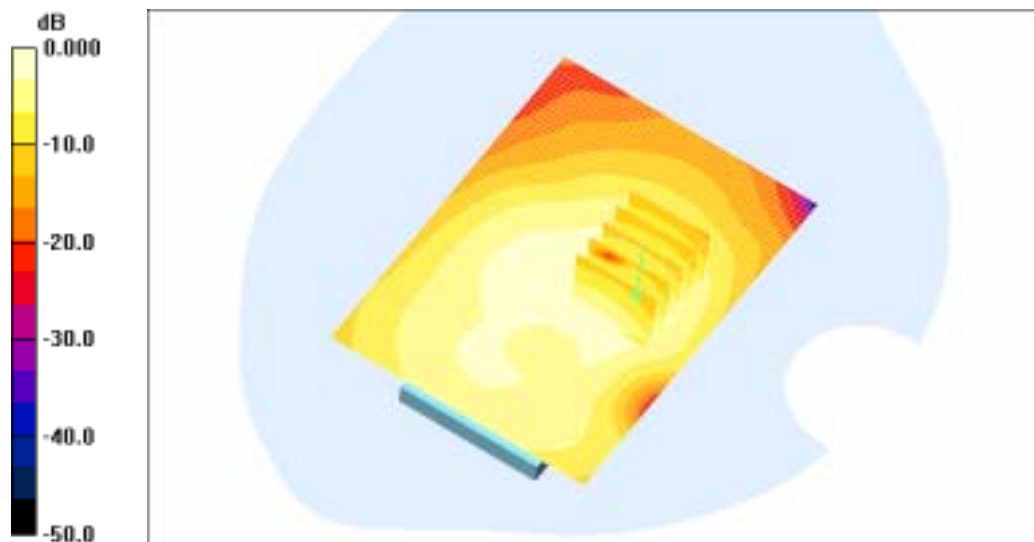
**SAR(1 g) = 0.300 mW/g**

Maximum value of SAR (measured) = 0.320 mW/g

**Body, Ch.512, Ant.Intenna, Bat.Standard/Area Scan (51x71x1):** Measurement grid:

$dx=20$ mm,  $dy=20$ mm

Maximum value of SAR (interpolated) = 0.289 mW/g



0 dB = 0.289mW/g

SAMSUNG FCC ID : A3LSGHP300 1900MHz GSM1900 Head SAR

DUT: SGH-P300; Serial: FC-143-F

Program Name: SGH-P300 GSM1900 Right (Job No. : FC-143)

Procedure Name: Cheek/Touch, Ch.512, Ant.Intenna, Bat.Standard With BT ON

Procedure Notes: Meas.Ambient Temp(celsius)-22.1; Tissue Temp(celsius)-21.9; Test Date-19/Oct/2005 [OET Bulletin 65-Supplement C, July 2001]

Communication System: GSM 1900; Frequency: 1850.2 MHz;Duty Cycle: 1:8.3

Medium parameters used:  $f = 1850.2$  MHz;  $\sigma = 1.38$  mho/m;  $\epsilon_r = 39.9$ ;  $\rho = 1000$  kg/m<sup>3</sup>

Phantom section: Right Section

DASY4 Configuration:

- Probe: EX3DV4 - SN3537; ConvF(8.29, 8.29, 8.29); Calibrated: 2004-12-15
- Sensor-Surface: 4mm (Mechanical Surface Detection)
- Electronics: DAE3 Sn468; Calibrated: 2004-12-07
- Phantom: SAM 1800/1900 MHz; Type: SAM; Serial: TP-1248
- Measurement SW: DASY4, V4.6 Build 19; Postprocessing SW: SEMCAD, V1.8 Build 159

**Cheek/Touch, Ch.512, Ant.Intenna, Bat.Standard With BT ON/Area Scan (51x71x1):**

Measurement grid: dx=20mm, dy=20mm

Maximum value of SAR (interpolated) = 1.33 mW/g

**Cheek/Touch, Ch.512, Ant.Intenna, Bat.Standard With BT ON/Zoom Scan (5x5x7)/Cube**

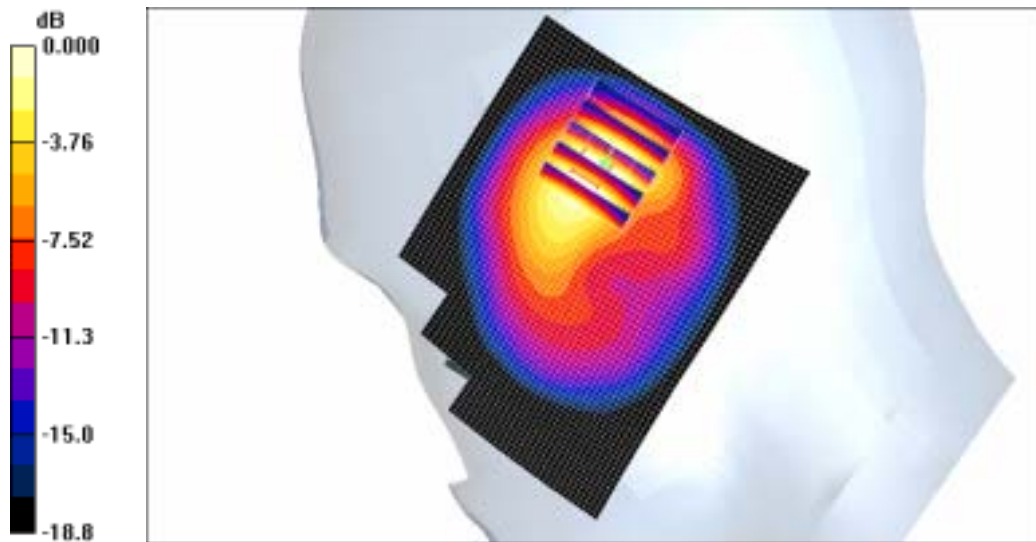
0: Measurement grid: dx=8mm, dy=8mm, dz=5mm

Reference Value = 16.8 V/m; Power Drift = 0.020 dB

Peak SAR (extrapolated) = 2.35 W/kg

**SAR(1 g) = 1.22 mW/g**

Maximum value of SAR (measured) = 1.32 mW/g



0 dB = 1.32mW/g

SAMSUNG FCC ID : A3LSGHP300 1900MHz GPRS1900 Body SAR

DUT: SGH-P300; Serial: FC-143-F

Program Name: SGH-P300 GSM1900 Body (Job No. : FC-143)

Procedure Name: Body, Ch.512, Ant.Intenna, Bat.Standard With BT ON

Procedure Notes: Meas.Ambient Temp(celsius)-22.1; Tissue Temp(celsius)-21.9; Test Date-19/Oct/2005 [OET Bulletin 65-Supplement C, July 2001]

Communication System: Body GPRS ; Frequency: 1850.2 MHz;Duty Cycle: 1:4.15

Medium parameters used:  $f = 1850.2$  MHz;  $\sigma = 1.51$  mho/m;  $\epsilon_r = 52.4$ ;  $\rho = 1000$  kg/m<sup>3</sup>

Phantom section: Flat Section

DASY4 Configuration:

- Probe: EX3DV4 - SN3537; ConvF(7.76, 7.76, 7.76); Calibrated: 2004-12-15
- Sensor-Surface: 4mm (Mechanical Surface Detection)
- Electronics: DAE3 Sn468; Calibrated: 2004-12-07
- Phantom: SAM 1800/1900 MHz; Type: SAM; Serial: TP-1248
- Measurement SW: DASY4, V4.6 Build 19; Postprocessing SW: SEMCAD, V1.8 Build 159

**Body, Ch.512, Ant.Intenna, Bat.Standard With BT ON/Area Scan (51x71x1):**

Measurement grid: dx=20mm, dy=20mm

Maximum value of SAR (interpolated) = 0.299 mW/g

**Body, Ch.512, Ant.Intenna, Bat.Standard With BT ON/Zoom Scan (5x5x7)/Cube 0:**

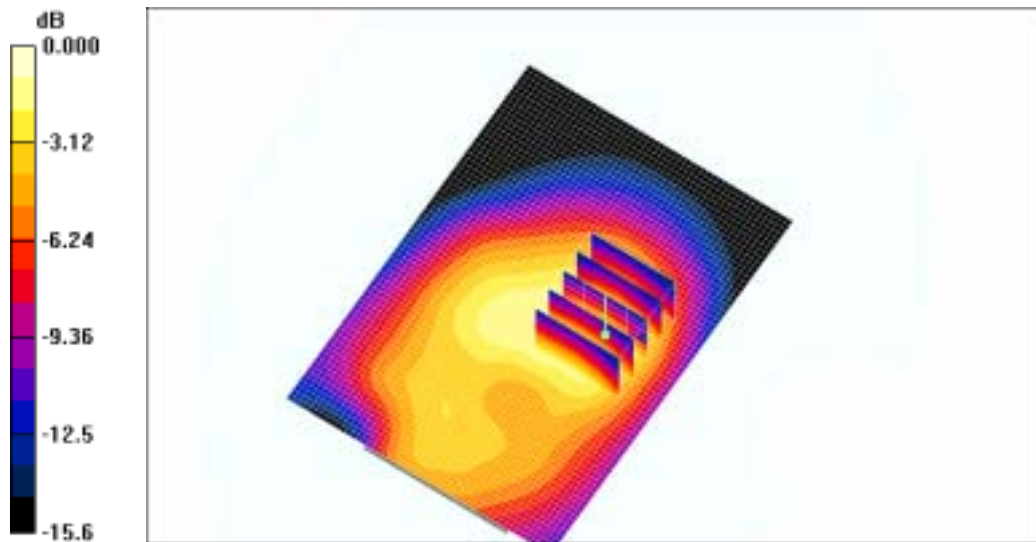
Measurement grid: dx=8mm, dy=8mm, dz=5mm

Reference Value = 8.26 V/m; Power Drift = 0.020 dB

Peak SAR (extrapolated) = 0.605 W/kg

**SAR(1 g) = 0.301 mW/g**

Maximum value of SAR (measured) = 0.321 mW/g



0 dB = 0.321mW/g

SAMSUNG FCC ID : A3LSGHP300 1900MHz GSM1900 Head SAR

DUT: SGH-P300; Serial: FC-143-F

Program Name: SGH-P300 GSM1900 Right (Job No. : FC-143)

Procedure Name: Cheek/Touch, Ch.512, Ant.Intenna, Bat.Standard

Procedure Notes: Meas.Ambient Temp(celsius)-22.1; Tissue Temp(celsius)-21.9; Test Date-19/Oct/2005 [OET Bulletin 65-Supplement C, July 2001]

Communication System: GSM 1900; Frequency: 1850.2 MHz;Duty Cycle: 1:8.3

Medium parameters used:  $f = 1850.2$  MHz;  $\sigma = 1.38$  mho/m;  $\epsilon_r = 39.9$ ;  $\rho = 1000$  kg/m<sup>3</sup>

Phantom section: Right Section

DASY4 Configuration:

- Probe: EX3DV4 - SN3537; ConvF(8.29, 8.29, 8.29); Calibrated: 2004-12-15
- Sensor-Surface: 4mm (Mechanical Surface Detection)
- Electronics: DAE3 Sn468; Calibrated: 2004-12-07
- Phantom: SAM 1800/1900 MHz; Type: SAM; Serial: TP-1248
- Measurement SW: DASY4, V4.6 Build 19; Postprocessing SW: SEMCAD, V1.8 Build 159

**Cheek/Touch, Ch.512, Ant.Intenna, Bat.Standard/Area Scan (51x71x1):** Measurement grid: dx=20mm, dy=20mm

Maximum value of SAR (interpolated) = 1.41 mW/g

**Cheek/Touch, Ch.512, Ant.Intenna, Bat.Standard/Zoom Scan (5x5x7)/Cube 0:**

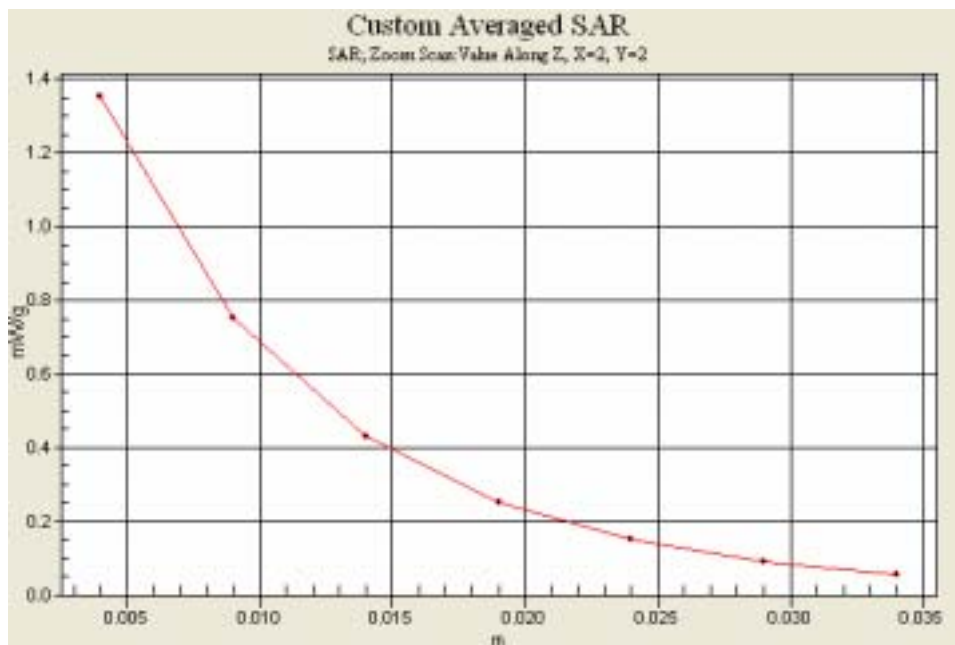
Measurement grid: dx=8mm, dy=8mm, dz=5mm

Reference Value = 16.2 V/m; Power Drift = 0.003 dB

Peak SAR (extrapolated) = 2.39 W/kg

**SAR(1 g) = 1.25 mW/g**

Maximum value of SAR (measured) = 1.35 mW/g



SAMSUNG FCC ID : A3LSGHP300 1900MHz GSM1900 Head SAR

DUT: SGH-P300; Serial: FC-143-F

Program Name: SGH-P300 GSM1900 Right (Job No. : FC-143)

Procedure Name: Cheek/Touch, Ch.512, Ant.Intenna, Bat.Standard With BT ON

Procedure Notes: Meas.Ambient Temp(celsius)-22.1; Tissue Temp(celsius)-21.9; Test Date-19/Oct/2005 [OET Bulletin 65-Supplement C, July 2001]

Communication System: GSM 1900; Frequency: 1850.2 MHz;Duty Cycle: 1:8.3

Medium parameters used:  $f = 1850.2$  MHz;  $\sigma = 1.38$  mho/m;  $\epsilon_r = 39.9$ ;  $\rho = 1000$  kg/m<sup>3</sup>

Phantom section: Right Section

DASY4 Configuration:

- Probe: EX3DV4 - SN3537; ConvF(8.29, 8.29, 8.29); Calibrated: 2004-12-15
- Sensor-Surface: 4mm (Mechanical Surface Detection)
- Electronics: DAE3 Sn468; Calibrated: 2004-12-07
- Phantom: SAM 1800/1900 MHz; Type: SAM; Serial: TP-1248
- Measurement SW: DASY4, V4.6 Build 19; Postprocessing SW: SEMCAD, V1.8 Build 159

**Cheek/Touch, Ch.512, Ant.Intenna, Bat.Standard With BT ON/Area Scan (51x71x1):**

Measurement grid: dx=20mm, dy=20mm

Maximum value of SAR (interpolated) = 1.33 mW/g

**Cheek/Touch, Ch.512, Ant.Intenna, Bat.Standard With BT ON/Zoom Scan (5x5x7)/Cube**

0: Measurement grid: dx=8mm, dy=8mm, dz=5mm

Reference Value = 16.8 V/m; Power Drift = 0.020 dB

Peak SAR (extrapolated) = 2.35 W/kg

**SAR(1 g) = 1.22 mW/g**

Maximum value of SAR (measured) = 1.32 mW/g



SAMSUNG FCC ID : A3LSGHP300 1900MHz GPRS1900 Body SAR

DUT: SGH-P300; Serial: FC-143-F

Program Name: SGH-P300 GSM1900 Body (Job No. : FC-143)

Procedure Name: Body, Ch.512, Ant.Intenna, Bat.Standard

Procedure Notes: Meas.Ambient Temp(celsius)-22.1; Tissue Temp(celsius)-21.9; Test Date-19/Oct/2005 [OET Bulletin 65-Supplement C, July 2001]

Communication System: Body GPRS ; Frequency: 1850.2 MHz;Duty Cycle: 1:4.15

Medium parameters used:  $f = 1850.2$  MHz;  $\sigma = 1.51$  mho/m;  $\epsilon_r = 52.4$ ;  $\rho = 1000$  kg/m<sup>3</sup>

Phantom section: Flat Section

DASY4 Configuration:

- Probe: EX3DV4 - SN3537; ConvF(7.76, 7.76, 7.76); Calibrated: 2004-12-15
- Sensor-Surface: 4mm (Mechanical Surface Detection)
- Electronics: DAE3 Sn468; Calibrated: 2004-12-07
- Phantom: SAM 1800/1900 MHz; Type: SAM; Serial: TP-1248
- Measurement SW: DASY4, V4.6 Build 19; Postprocessing SW: SEMCAD, V1.8 Build 159

**Body, Ch.512, Ant.Intenna, Bat.Standard/Area Scan (51x71x1):** Measurement grid:

dx=20mm, dy=20mm

Maximum value of SAR (interpolated) = 0.289 mW/g

**Body, Ch.512, Ant.Intenna, Bat.Standard/Zoom Scan (5x5x7)/Cube 0:** Measurement grid:

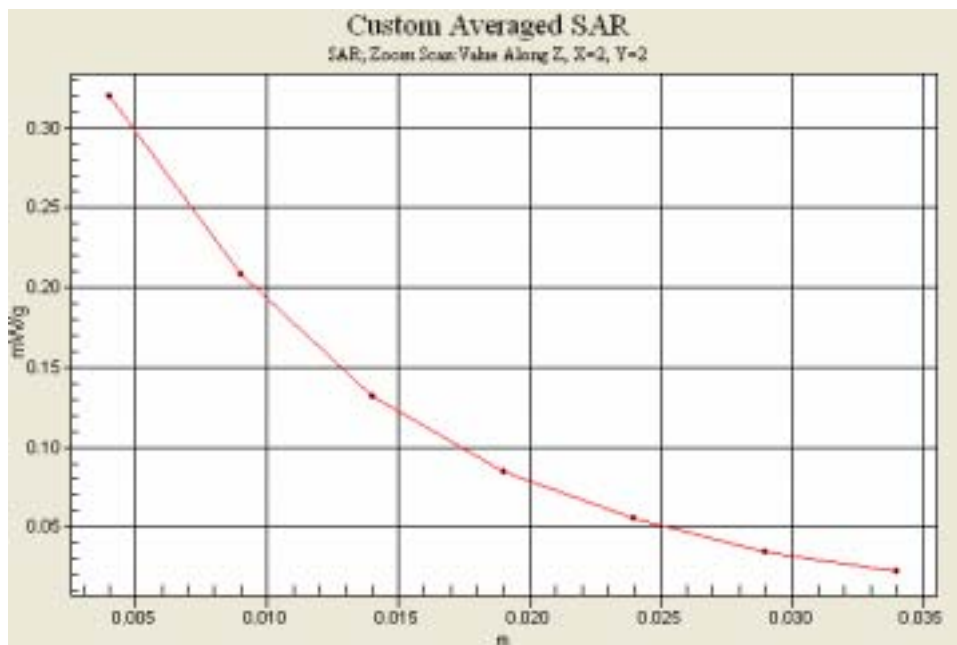
dx=8mm, dy=8mm, dz=5mm

Reference Value = 8.20 V/m; Power Drift = 0.046 dB

Peak SAR (extrapolated) = 0.471 W/kg

**SAR(1 g) = 0.300 mW/g**

Maximum value of SAR (measured) = 0.320 mW/g



SAMSUNG FCC ID : A3LSGHP300 1900MHz GSM1900 Head SAR

DUT: SGH-P300; Serial: FC-143-F

Program Name: SGH-P300 GSM1900 Body (Job No. : FC-143)

Procedure Name: Body, Ch.512, Ant.Intenna, Bat.Standard With BT ON

Procedure Notes: Meas.Ambient Temp(celsius)-22.1; Tissue Temp(celsius)-21.9; Test Date-19/Oct/2005 [OET Bulletin 65-Supplement C, July 2001]

Communication System: Body GPRS ; Frequency: 1850.2 MHz;Duty Cycle: 1:4.15

Medium parameters used:  $f = 1850.2$  MHz;  $\sigma = 1.51$  mho/m;  $\epsilon_r = 52.4$ ;  $\rho = 1000$  kg/m<sup>3</sup>

Phantom section: Flat Section

DASY4 Configuration:

- Probe: EX3DV4 - SN3537; ConvF(7.76, 7.76, 7.76); Calibrated: 2004-12-15
- Sensor-Surface: 4mm (Mechanical Surface Detection)
- Electronics: DAE3 Sn468; Calibrated: 2004-12-07
- Phantom: SAM 1800/1900 MHz; Type: SAM; Serial: TP-1248
- Measurement SW: DASY4, V4.6 Build 19; Postprocessing SW: SEMCAD, V1.8 Build 159

**Body, Ch.512, Ant.Intenna, Bat.Standard With BT ON/Area Scan (51x71x1):**

Measurement grid: dx=20mm, dy=20mm

Maximum value of SAR (interpolated) = 0.299 mW/g

**Body, Ch.512, Ant.Intenna, Bat.Standard With BT ON/Zoom Scan (5x5x7)/Cube 0:**

Measurement grid: dx=8mm, dy=8mm, dz=5mm

Reference Value = 8.26 V/m; Power Drift = 0.020 dB

Peak SAR (extrapolated) = 0.605 W/kg

**SAR(1 g) = 0.301 mW/g**

Maximum value of SAR (measured) = 0.321 mW/g

