

## 1900MHz Brain Dipole Validation

SAM Phantom; FlatSection; Probe: ET3DV6 - SN1551 -- ConvF(5.30,5.30,5.30)

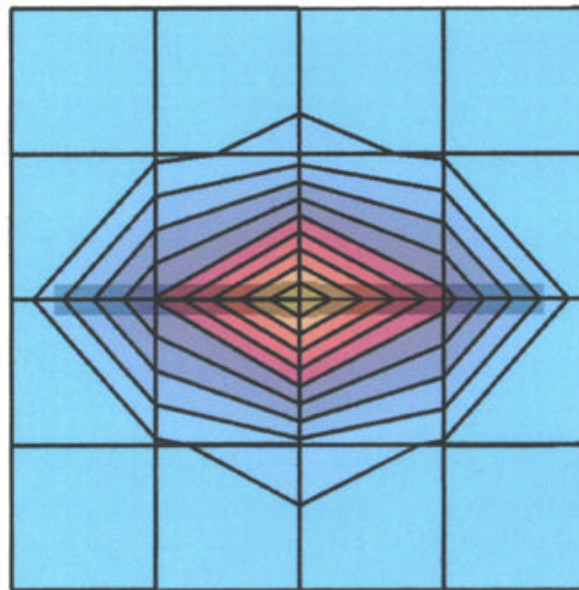
Head 1900 MHz:  $\sigma = 1.39$  mho/m  $\epsilon_r = 38.6$   $\rho = 1.00$  g/cm<sup>3</sup>; Crest factor: 1.0

SAR (1g): 10.0 mW/g

1900MHz Brain Dipole Validation (D1900V2 S/N:548)

Frequency: 1900 MHz; Antenna Input Power: 250 [mW]; Ambient Temp. (°C) - 22.1; Tissue Temp. (°C) - 20.8

Brain Tissue Simulating Liquid [04/28/2003]



SAR<sub>Tot</sub> [mW/g]

