

SAMSUNG FCC ID : A3LSGHI310 - - 1900MHz GSM1900 Head SAR

DUT: SGH-i310; Serial: FD-124-J

Program Name: SGH-i310 GSM1900 Right (Job No. : FD-124)

Procedure Name: Cheek/Touch, Ch.810, Ant.Intenna, Bat.Standard

Procedure Notes: Meas.Tissue Temp(celsius)-21.8, Ambient Temp-22.0;Test Date-21/Jul/2006[OET Bulletin 65-Supplement C, July 2001]

Communication System: GSM 1900; Frequency: 1909.8 MHz;Duty Cycle: 1:8.3

Medium parameters used: $f = 1909.8$ MHz; $\sigma = 1.38$ mho/m; $\epsilon_r = 38.9$; $\rho = 1000$ kg/m³

Phantom section: Right Section

DASY4 Configuration:

- Probe: ES3DV3 - SN3080; ConvF(5, 5, 5); Calibrated: 2006-05-30
- Sensor-Surface: 4mm (Mechanical Surface Detection)
- Electronics: DAE4 Sn686; Calibrated: 2006-05-05
- Phantom: SAM PHANTOM #1; Type: SAM; Serial: TP-1247
- Measurement SW: DASY4, V4.7 Build 44; Postprocessing SW: SEMCAD, V1.8 Build 171

Cheek/Touch, Ch.810, Ant.Intenna, Bat.Standard/Area Scan (51x71x1): Measurement grid: dx=20mm, dy=20mm

Maximum value of SAR (interpolated) = 0.146 mW/g

Cheek/Touch, Ch.810, Ant.Intenna, Bat.Standard/Zoom Scan (5x5x7)/Cube 0:

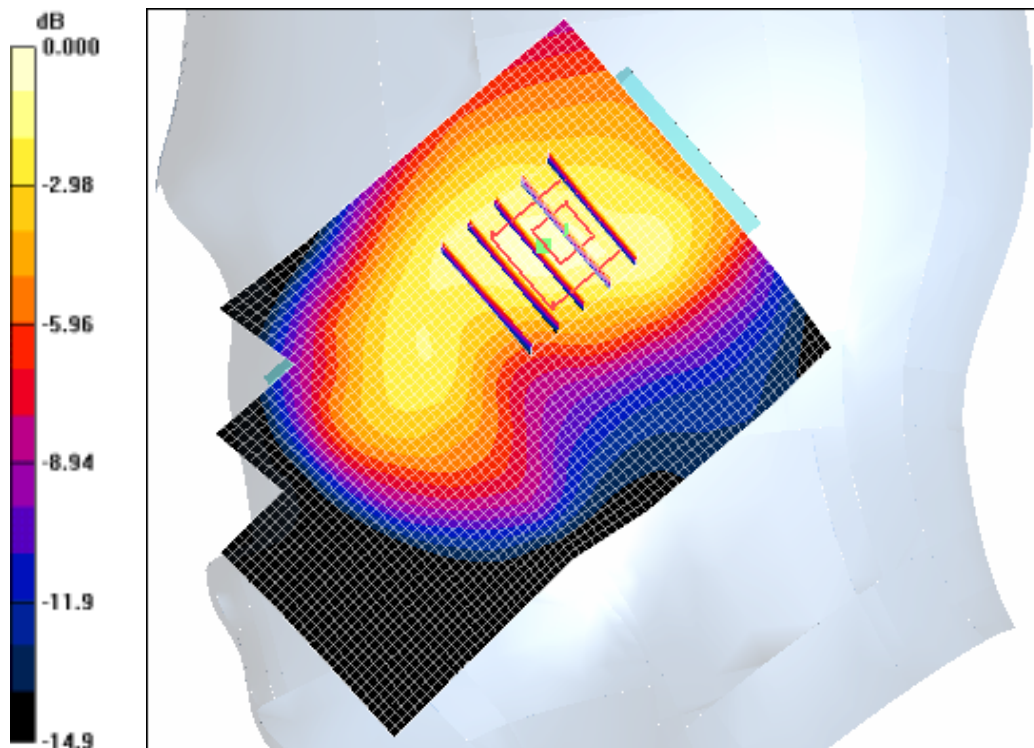
Measurement grid: dx=8mm, dy=8mm, dz=5mm

Reference Value = 6.87 V/m; Power Drift = -0.048 dB

Peak SAR (extrapolated) = 0.198 W/kg

SAR(1 g) = 0.144 mW/g

Maximum value of SAR (measured) = 0.159 mW/g



0 dB = 0.159mW/g

SAMSUNG FCC ID : A3LSGHI310 - - 1900MHz GSM1900 Head SAR

DUT: SGH-i310; Serial: FD-124-J

Program Name: SGH-i310 GSM1900 Right (Job No. : FD-124)

Procedure Name: Ear/Tilt, Ch.810, Ant.Intenna, Bat.Standard

Procedure Notes: Meas.Tissue Temp(celsius)-21.8, Ambient Temp-22.0;Test Date-21/Jul/2006[OET Bulletin 65-Supplement C, July 2001]

Communication System: GSM 1900; Frequency: 1909.8 MHz;Duty Cycle: 1:8.3

Medium parameters used: $f = 1909.8$ MHz; $\sigma = 1.38$ mho/m; $\epsilon_r = 38.9$; $\rho = 1000$ kg/m³

Phantom section: Right Section

DASY4 Configuration:

- Probe: ES3DV3 - SN3080; ConvF(5, 5, 5); Calibrated: 2006-05-30
- Sensor-Surface: 4mm (Mechanical Surface Detection)
- Electronics: DAE4 Sn686; Calibrated: 2006-05-05
- Phantom: SAM PHANTOM #1; Type: SAM; Serial: TP-1247
- Measurement SW: DASY4, V4.7 Build 44; Postprocessing SW: SEMCAD, V1.8 Build 171

Ear/Tilt, Ch.810, Ant.Intenna, Bat.Standard/Zoom Scan (5x5x7)/Cube 0: Measurement grid: dx=8mm, dy=8mm, dz=5mm

Reference Value = 6.92 V/m; Power Drift = -0.074 dB

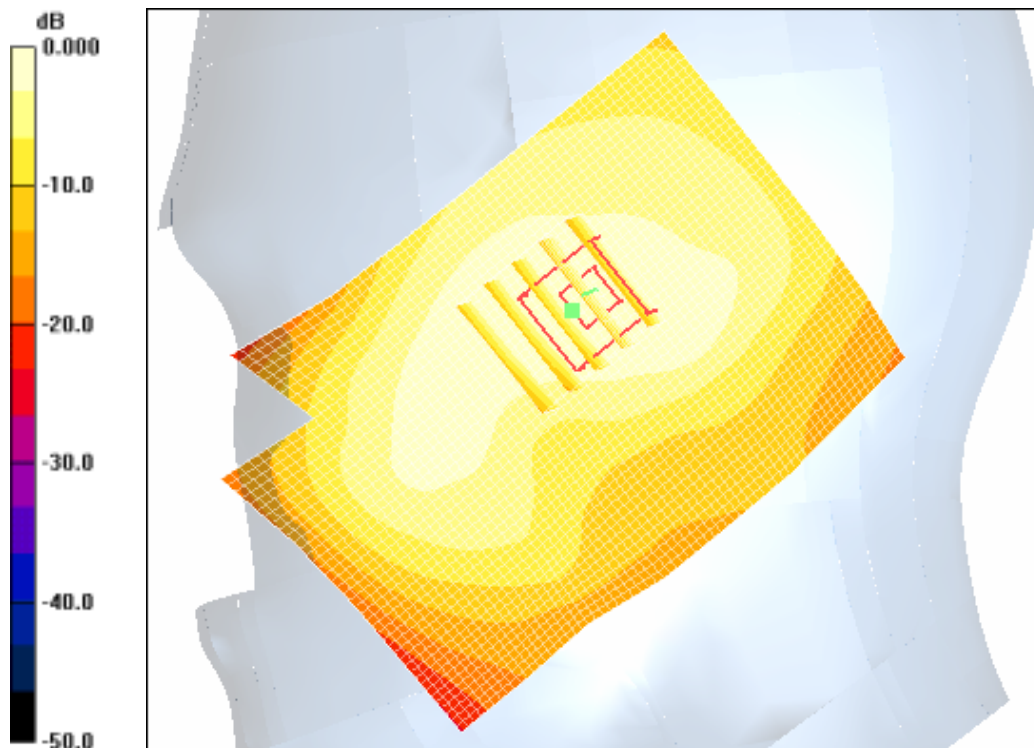
Peak SAR (extrapolated) = 0.200 W/kg

SAR(1 g) = 0.145 mW/g

Maximum value of SAR (measured) = 0.161 mW/g

Ear/Tilt, Ch.810, Ant.Intenna, Bat.Standard/Area Scan (51x71x1): Measurement grid: dx=20mm, dy=20mm

Maximum value of SAR (interpolated) = 0.147 mW/g



0 dB = 0.147mW/g

SAMSUNG FCC ID : A3LSGHI310 - - 1900MHz GSM1900 Head SAR

DUT: SGH-i310; Serial: FD-124-J

Program Name: SGH-i310 GSM1900 Left (Job No. : FD-124)

Procedure Name: Cheek/Touch, Ch.810, Ant.Intenna, Bat.Standard

Procedure Notes: Meas.Tissue Temp(celsius)-21.8, Ambient Temp-22.0;Test Date-21/Jul/2006[OET Bulletin 65-Supplement C, July 2001]

Communication System: GSM 1900; Frequency: 1909.8 MHz;Duty Cycle: 1:8.3

Medium parameters used: $f = 1909.8$ MHz; $\sigma = 1.38$ mho/m; $\epsilon_r = 38.9$; $\rho = 1000$ kg/m³

Phantom section: Left Section

DASY4 Configuration:

- Probe: ES3DV3 - SN3080; ConvF(5, 5, 5); Calibrated: 2006-05-30
- Sensor-Surface: 4mm (Mechanical Surface Detection)
- Electronics: DAE4 Sn686; Calibrated: 2006-05-05
- Phantom: SAM PHANTOM #1; Type: SAM; Serial: TP-1247
- Measurement SW: DASY4, V4.7 Build 44; Postprocessing SW: SEMCAD, V1.8 Build 171

Cheek/Touch, Ch.810, Ant.Intenna, Bat.Standard/Area Scan (51x71x1): Measurement grid: dx=20mm, dy=20mm

Maximum value of SAR (interpolated) = 0.161 mW/g

Cheek/Touch, Ch.810, Ant.Intenna, Bat.Standard/Zoom Scan (5x5x7)/Cube 0:

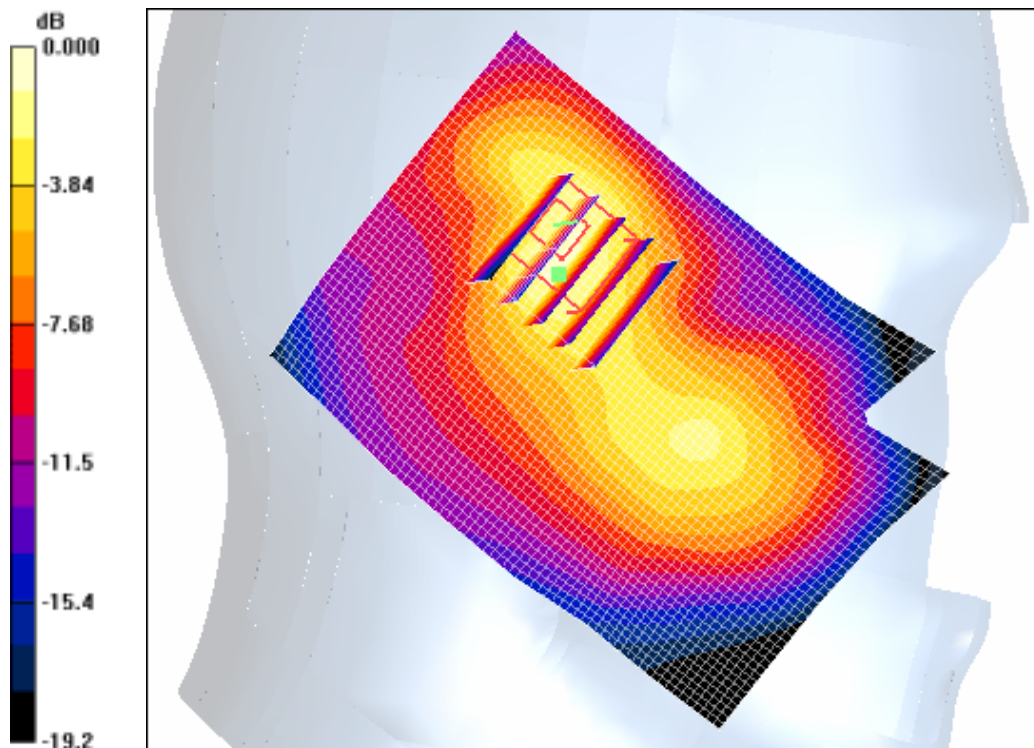
Measurement grid: dx=8mm, dy=8mm, dz=5mm

Reference Value = 7.51 V/m; Power Drift = -0.015 dB

Peak SAR (extrapolated) = 0.287 W/kg

SAR(1 g) = 0.178 mW/g

Maximum value of SAR (measured) = 0.202 mW/g



0 dB = 0.202mW/g

SAMSUNG FCC ID : A3LSGHI310 - - 1900MHz GSM1900 Head SAR

DUT: SGH-i310; Serial: FD-124-J

Program Name: SGH-i310 GSM1900 Left (Job No. : FD-124)

Procedure Name: Ear/Tilt, Ch.810, Ant.Intenna, Bat.Standard with BT ON

Procedure Notes: Meas.Tissue Temp(celsius)-21.8, Ambient Temp-22.0;Test Date-21/Jul/2006[OET Bulletin 65-Supplement C, July 2001]

Communication System: GSM 1900; Frequency: 1909.8 MHz;Duty Cycle: 1:8.3

Medium parameters used: $f = 1909.8$ MHz; $\sigma = 1.38$ mho/m; $\epsilon_r = 38.9$; $\rho = 1000$ kg/m³

Phantom section: Left Section

DASY4 Configuration:

- Probe: ES3DV3 - SN3080; ConvF(5, 5, 5); Calibrated: 2006-05-30
- Sensor-Surface: 4mm (Mechanical Surface Detection)
- Electronics: DAE4 Sn686; Calibrated: 2006-05-05
- Phantom: SAM PHANTOM #1; Type: SAM; Serial: TP-1247
- Measurement SW: DASY4, V4.7 Build 44; Postprocessing SW: SEMCAD, V1.8 Build 171

Ear/Tilt, Ch.810, Ant.Intenna, Bat.Standard with BT ON/Area Scan (51x71x1):

Measurement grid: dx=20mm, dy=20mm

Maximum value of SAR (interpolated) = 0.208 mW/g

Ear/Tilt, Ch.810, Ant.Intenna, Bat.Standard with BT ON/Zoom Scan (5x5x7)/Cube 0:

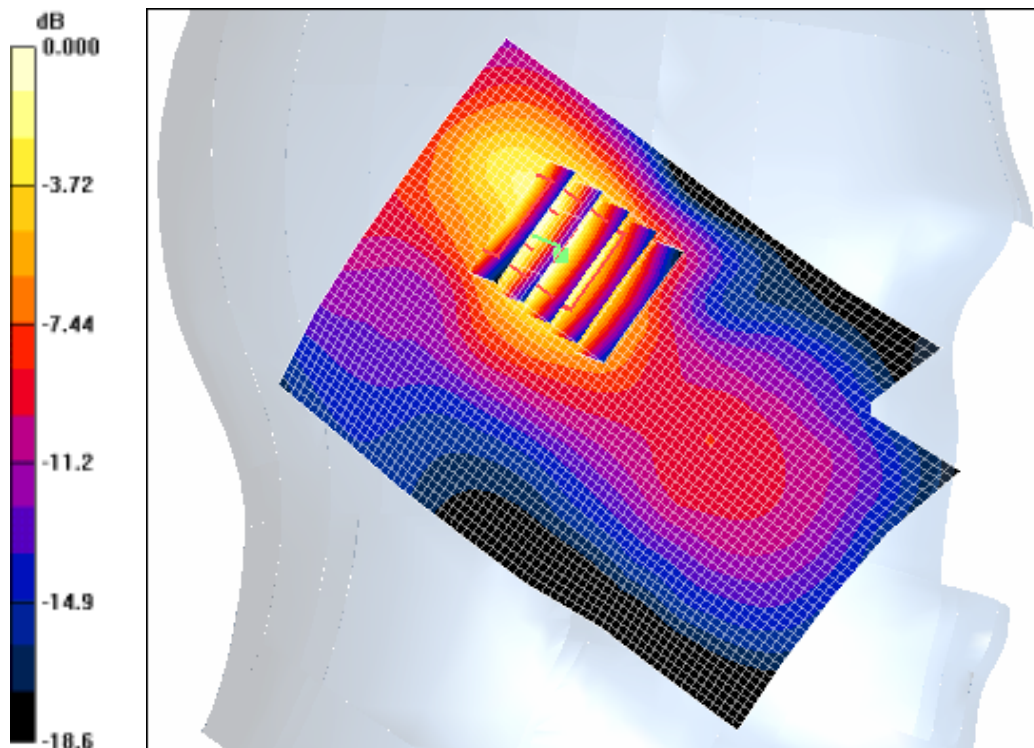
Measurement grid: dx=8mm, dy=8mm, dz=5mm

Reference Value = 9.50 V/m; Power Drift = 0.027 dB

Peak SAR (extrapolated) = 0.325 W/kg

SAR(1 g) = 0.204 mW/g

Maximum value of SAR (measured) = 0.224 mW/g



0 dB = 0.224mW/g

SAMSUNG FCC ID : A3LSGHI310 - - 1900MHz GSM1900 Head SAR

DUT: SGH-i310; Serial: FD-124-J

Program Name: SGH-i310 GSM1900 Left (Job No. : FD-124)

Procedure Name: Ear/Tilt, Ch.810, Ant.Intenna, Bat.Standard with BT ON

Procedure Notes: Meas.Tissue Temp(celsius)-21.8, Ambient Temp-22.0;Test Date-21/Jul/2006[OET Bulletin 65-Supplement C, July 2001]

Communication System: GSM 1900; Frequency: 1909.8 MHz;Duty Cycle: 1:8.3

Medium parameters used: $f = 1909.8$ MHz; $\sigma = 1.38$ mho/m; $\epsilon_r = 38.9$; $\rho = 1000$ kg/m³

Phantom section: Left Section

DASY4 Configuration:

- Probe: ES3DV3 - SN3080; ConvF(5, 5, 5); Calibrated: 2006-05-30
- Sensor-Surface: 4mm (Mechanical Surface Detection)
- Electronics: DAE4 Sn686; Calibrated: 2006-05-05
- Phantom: SAM PHANTOM #1; Type: SAM; Serial: TP-1247
- Measurement SW: DASY4, V4.7 Build 44; Postprocessing SW: SEMCAD, V1.8 Build 171

Ear/Tilt, Ch.810, Ant.Intenna, Bat.Standard with BT ON/Area Scan (51x71x1):

Measurement grid: dx=20mm, dy=20mm

Maximum value of SAR (interpolated) = 0.208 mW/g

Ear/Tilt, Ch.810, Ant.Intenna, Bat.Standard with BT ON/Zoom Scan (5x5x7)/Cube 0:

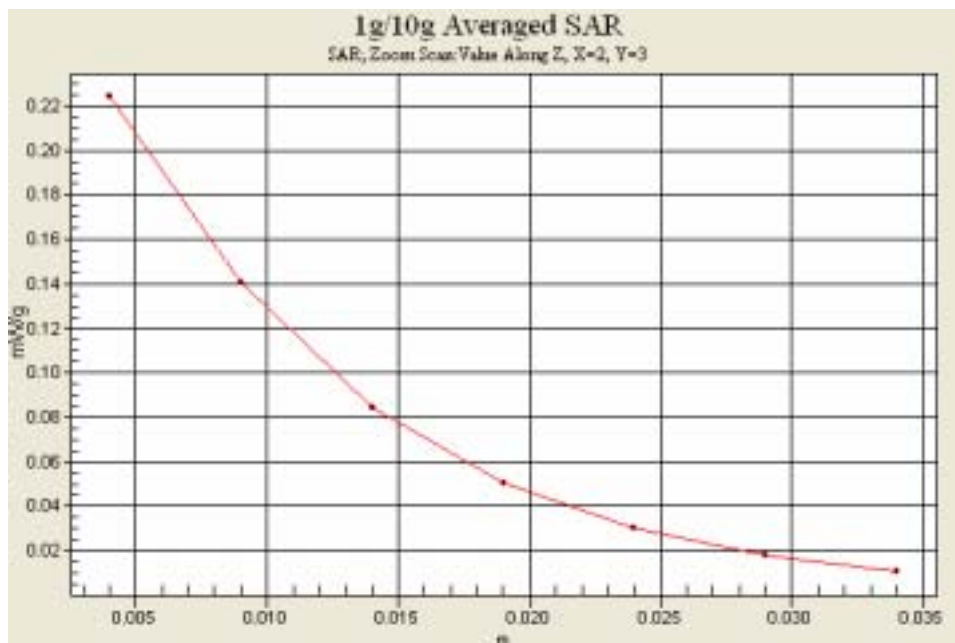
Measurement grid: dx=8mm, dy=8mm, dz=5mm

Reference Value = 9.50 V/m; Power Drift = 0.027 dB

Peak SAR (extrapolated) = 0.325 W/kg

SAR(1 g) = 0.204 mW/g

Maximum value of SAR (measured) = 0.224 mW/g



SAMSUNG FCC ID : A3LSGHI310 - - 1900MHz GPRS1900 Body SAR

DUT: SGH-i310; Serial: FD-124-J

Program Name: SGH-i310 GPRS1900 Body (Job No. : FD-124)

Procedure Name: Body, Ch.810, Ant.Intenna, Bat.Standard

Procedure Notes: Meas.Tissue Temp(celsius)-22.1, Ambient Temp-22.2;Test Date-21/Jul/2006[OET Bulletin 65-Supplement C, July 2001]

Communication System: GSM1900 GPRS; Frequency: 1909.8 MHz;Duty Cycle: 1:4.15
Medium parameters used: $f = 1909.8$ MHz; $\sigma = 1.52$ mho/m; $\epsilon_r = 52.4$; $\rho = 1000$ kg/m³

Phantom section: Flat Section

DASY4 Configuration:

- Probe: ES3DV3 - SN3080; ConvF(4.5, 4.5, 4.5); Calibrated: 2006-05-30
- Sensor-Surface: 4mm (Mechanical Surface Detection)
- Electronics: DAE4 Sn686; Calibrated: 2006-05-05
- Phantom: SAM PHANTOM #2; Type: SAM; Serial: TP-1248
- Measurement SW: DASY4, V4.7 Build 44; Postprocessing SW: SEMCAD, V1.8 Build 171

Body, Ch.810, Ant.Intenna, Bat.Standard/Zoom Scan (5x5x7)/Cube 0: Measurement grid:

$dx=8$ mm, $dy=8$ mm, $dz=5$ mm

Reference Value = 15.7 V/m; Power Drift = -0.107 dB

Peak SAR (extrapolated) = 0.503 W/kg

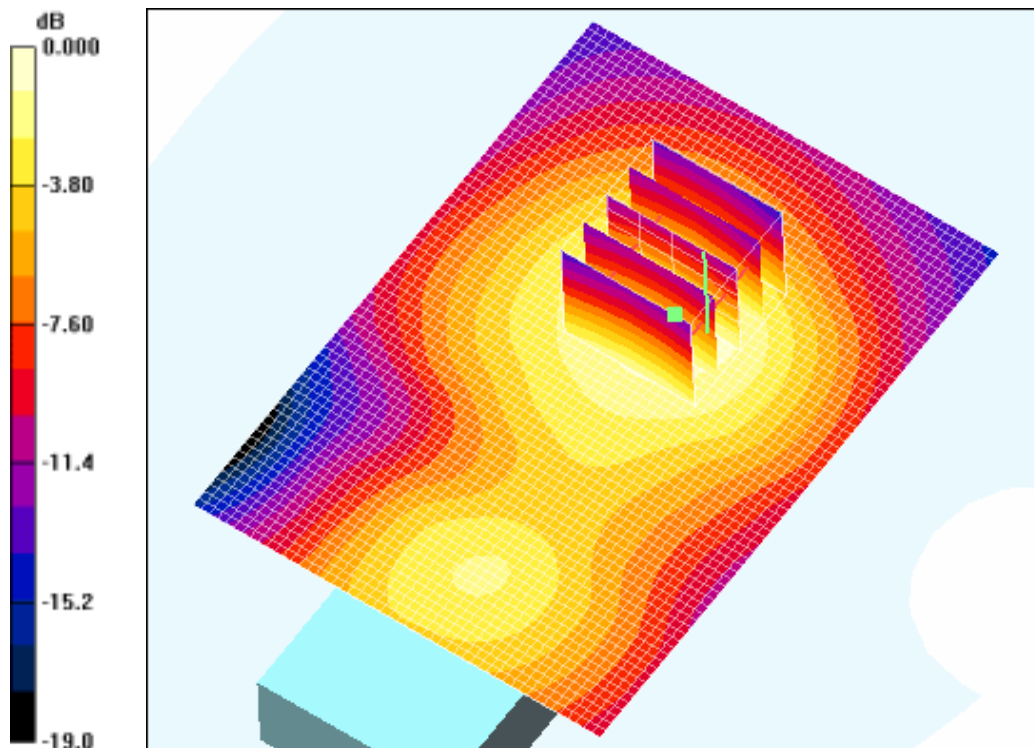
SAR(1 g) = 0.359 mW/g

Maximum value of SAR (measured) = 0.389 mW/g

Body, Ch.810, Ant.Intenna, Bat.Standard/Area Scan (51x71x1): Measurement grid:

$dx=20$ mm, $dy=20$ mm

Maximum value of SAR (interpolated) = 0.446 mW/g



0 dB = 0.446mW/g

SAMSUNG FCC ID : A3LSGHI310 - - 1900MHz GPRS1900 Body SAR

DUT: SGH-i310; Serial: FD-124-J

Program Name: SGH-i310 GPRS1900 Body (Job No. : FD-124)

Procedure Name: Body, Ch.810, Ant.Intenna, Bat.Standard

Procedure Notes: Meas.Tissue Temp(celsius)-22.1, Ambient Temp-22.2;Test Date-21/Jul/2006[OET Bulletin 65-Supplement C, July 2001]

Communication System: GSM1900 GPRS; Frequency: 1909.8 MHz;Duty Cycle: 1:4.15

Medium parameters used: $f = 1909.8$ MHz; $\sigma = 1.52$ mho/m; $\epsilon_r = 52.4$; $\rho = 1000$ kg/m³

Phantom section: Flat Section

DASY4 Configuration:

- Probe: ES3DV3 - SN3080; ConvF(4.5, 4.5, 4.5); Calibrated: 2006-05-30
- Sensor-Surface: 4mm (Mechanical Surface Detection)
- Electronics: DAE4 Sn686; Calibrated: 2006-05-05
- Phantom: SAM PHANTOM #2; Type: SAM; Serial: TP-1248
- Measurement SW: DASY4, V4.7 Build 44; Postprocessing SW: SEMCAD, V1.8 Build 171

Body, Ch.810, Ant.Intenna, Bat.Standard/Zoom Scan (5x5x7)/Cube 0: Measurement grid:

$dx=8$ mm, $dy=8$ mm, $dz=5$ mm

Reference Value = 15.7 V/m; Power Drift = -0.107 dB

Peak SAR (extrapolated) = 0.503 W/kg

SAR(1 g) = 0.359 mW/g

Maximum value of SAR (measured) = 0.389 mW/g

Body, Ch.810, Ant.Intenna, Bat.Standard/Area Scan (51x71x1): Measurement grid:

$dx=20$ mm, $dy=20$ mm

Maximum value of SAR (interpolated) = 0.446 mW/g

