

**SAMSUNG FCC ID : A3LSGHE760 -- 1900MHz GSM1900 Head SAR**

**DUT: SGH-E760; Serial: FC-091-B**

**Program Name: SGH-E760 GSM1900 Right (Job No. : FC-091)**

**Procedure Name: Cheek/Touch, Ch.512, Ant.Intenna, Bat.Standard**

**Procedure Notes: Meas.Tissue Temp(celsius)-21.0; Test Date-29/June/2005 [OET Bulletin 65-Supplement C, July 2001]**

Communication System: GSM 1900; Frequency: 1850.2 MHz;Duty Cycle: 1:8.3

Medium parameters used:  $f = 1850.2$  MHz;  $\sigma = 1.42$  mho/m;  $\epsilon_r = 39$ ;  $\rho = 1000$  kg/m<sup>3</sup>

Phantom section: Right Section

DASY4 Configuration:

- Probe: EX3DV4 - SN3537; ConvF(8.29, 8.29, 8.29); Calibrated: 2004-12-15

- Sensor-Surface: 4mm (Mechanical Surface Detection)

- Electronics: DAE3 Sn468; Calibrated: 2004-12-07

- Phantom: SAM 1800/1900 MHz; Type: SAM; Serial: TP-1248

- Measurement SW: DASY4, V4.5 Build 19; Postprocessing SW: SEMCAD, V1.8 Build 146

**Cheek/Touch, Ch.512, Ant.Intenna, Bat.Standard/Area Scan (51x71x1):** Measurement grid: dx=20mm, dy=20mm

Maximum value of SAR (interpolated) = 0.771 mW/g

**Cheek/Touch, Ch.512, Ant.Intenna, Bat.Standard/Zoom Scan (5x5x7)/Cube 0:**

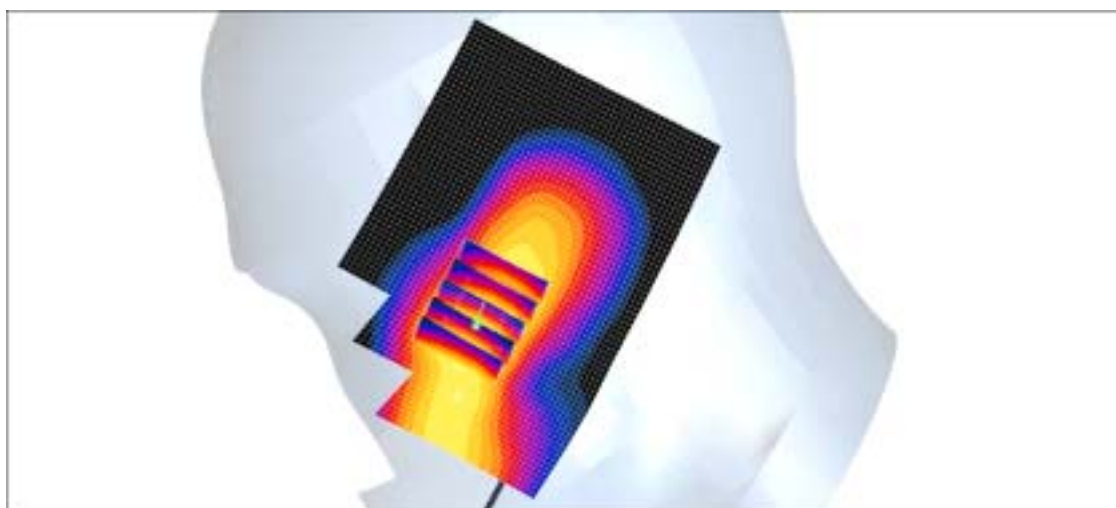
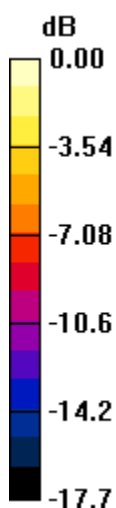
Measurement grid: dx=8mm, dy=8mm, dz=5mm

Reference Value = 7.50 V/m; Power Drift = -0.039 dB

Peak SAR (extrapolated) = 1.48 W/kg

**SAR(1 g) = 0.852 mW/g**

Maximum value of SAR (measured) = 0.927 mW/g



0 dB = 0.927mW/g

**SAMSUNG FCC ID : A3LSGHE760 -- 1900MHz GSM1900 Head SAR**

**DUT: SGH-E760; Serial: FC-091-B**

**Program Name: SGH-E760 GSM1900 Right (Job No. : FC-091)**

**Procedure Name: Ear/Tilt, Ch.661, Ant.Intenna, Bat.Standard**

**Procedure Notes: Meas.Tissue Temp(celsius)-21.0; Test Date-29/June/2005 [OET Bulletin 65-Supplement C, July 2001]**

Communication System: GSM 1900; Frequency: 1880 MHz;Duty Cycle: 1:8.3

Medium parameters used:  $f = 1880$  MHz;  $\sigma = 1.42$  mho/m;  $\epsilon_r = 39$ ;  $\rho = 1000$  kg/m<sup>3</sup>

Phantom section: Right Section

DASY4 Configuration:

- Probe: EX3DV4 - SN3537; ConvF(8.29, 8.29, 8.29); Calibrated: 2004-12-15

- Sensor-Surface: 4mm (Mechanical Surface Detection)

- Electronics: DAE3 Sn468; Calibrated: 2004-12-07

- Phantom: SAM 1800/1900 MHz; Type: SAM; Serial: TP-1248

- Measurement SW: DASY4, V4.5 Build 19; Postprocessing SW: SEMCAD, V1.8 Build 146

**Ear/Tilt, Ch.661, Ant.Intenna, Bat.Standard/Zoom Scan (5x5x7)/Cube 0:**

Measurement grid: dx=8mm, dy=8mm, dz=5mm

Reference Value = 8.78 V/m; Power Drift = -0.042 dB

Peak SAR (extrapolated) = 0.286 W/kg

**SAR(1 g) = 0.192 mW/g**

Maximum value of SAR (measured) = 0.207 mW/g

**Ear/Tilt, Ch.661, Ant.Intenna, Bat.Standard/Area Scan (51x71x1):** Measurement grid:

dx=20mm, dy=20mm

Maximum value of SAR (interpolated) = 0.233 mW/g



0 dB = 0.233mW/g

**SAMSUNG FCC ID : A3LSGHE760 -- 1900MHz GSM1900 Head SAR**

**DUT: SGH-E760; Serial: FC-091-B**

**Program Name: SGH-E760 GSM1900 Left ( Job No. : FC-091)**

**Procedure Name: Cheek/Touch, Ch.512, Ant.Intenna, Bat.Standard**

**Procedure Notes: Meas.Tissue Temp(celsius)-21.0; Test Date-29/June/2005 [OET Bulletin 65-Supplement C, July 2001]**

Communication System: GSM 1900; Frequency: 1850.2 MHz;Duty Cycle: 1:8.3

Medium parameters used:  $f = 1850.2$  MHz;  $\sigma = 1.42$  mho/m;  $\epsilon_r = 39$ ;  $\rho = 1000$  kg/m<sup>3</sup>

Phantom section: Left Section

DASY4 Configuration:

- Probe: EX3DV4 - SN3537; ConvF(8.29, 8.29, 8.29); Calibrated: 2004-12-15

- Sensor-Surface: 4mm (Mechanical Surface Detection)

- Electronics: DAE3 Sn468; Calibrated: 2004-12-07

- Phantom: SAM 1800/1900 MHz; Type: SAM; Serial: TP-1248

- Measurement SW: DASY4, V4.5 Build 19; Postprocessing SW: SEMCAD, V1.8 Build 146

**Cheek/Touch, Ch.512, Ant.Intenna, Bat.Standard/Zoom Scan (5x5x7)/Cube 0:**

Measurement grid: dx=8mm, dy=8mm, dz=5mm

Reference Value = 6.15 V/m; Power Drift = -0.185 dB

Peak SAR (extrapolated) = 1.47 W/kg

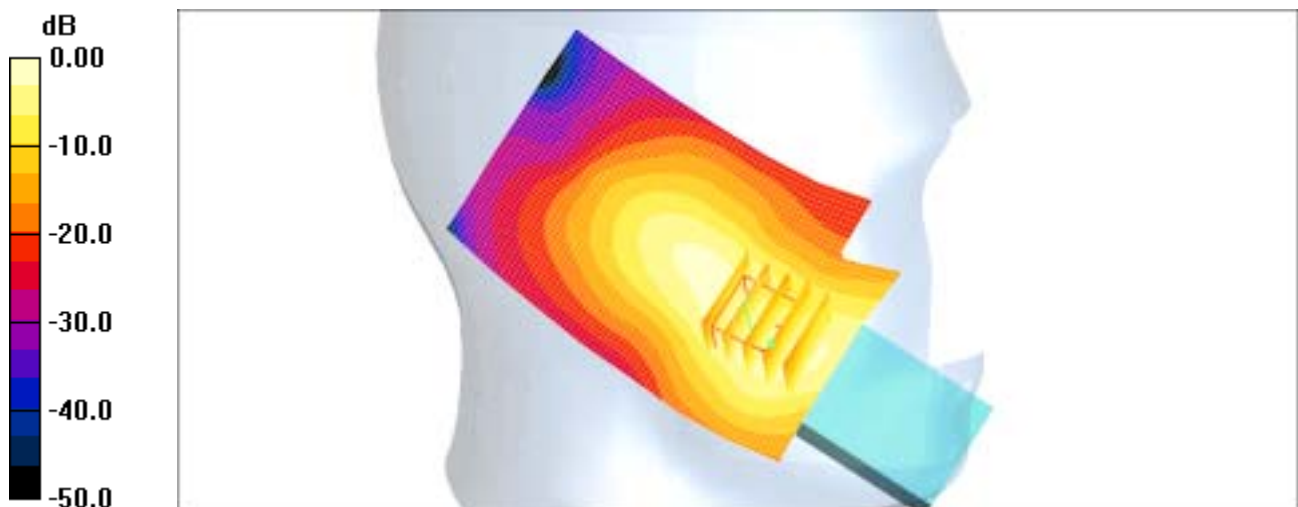
**SAR(1 g) = 0.816 mW/g**

Maximum value of SAR (measured) = 0.891 mW/g

**Cheek/Touch, Ch.512, Ant.Intenna, Bat.Standard/Area Scan (51x71x1):** Measurement

grid: dx=20mm, dy=20mm

Maximum value of SAR (interpolated) = 0.912 mW/g



0 dB = 0.912mW/g

**SAMSUNG FCC ID : A3LSGHE760 -- 1900MHz GSM1900 Head SAR**

**DUT: SGH-E760; Serial: FC-091-B**

**Program Name: SGH-E760 GSM1900 Left ( Job No. : FC-091)**

**Procedure Name: Ear/Tilt, Ch.661, Ant.Intenna, Bat.Standard**

**Procedure Notes: Meas.Tissue Temp(celsius)-21.0; Test Date-29/June/2005 [OET Bulletin 65-Supplement C, July 2001]**

Communication System: GSM 1900; Frequency: 1880 MHz;Duty Cycle: 1:8.3

Medium parameters used:  $f = 1880$  MHz;  $\sigma = 1.42$  mho/m;  $\epsilon_r = 39$ ;  $\rho = 1000$  kg/m<sup>3</sup>

Phantom section: Left Section

DASY4 Configuration:

- Probe: EX3DV4 - SN3537; ConvF(8.29, 8.29, 8.29); Calibrated: 2004-12-15

- Sensor-Surface: 4mm (Mechanical Surface Detection)

- Electronics: DAE3 Sn468; Calibrated: 2004-12-07

- Phantom: SAM 1800/1900 MHz; Type: SAM; Serial: TP-1248

- Measurement SW: DASY4, V4.5 Build 19; Postprocessing SW: SEMCAD, V1.8 Build 146

**Ear/Tilt, Ch.661, Ant.Intenna, Bat.Standard/Zoom Scan (5x5x7)/Cube 0:**

Measurement grid: dx=8mm, dy=8mm, dz=5mm

Reference Value = 9.49 V/m; Power Drift = 0.025 dB

Peak SAR (extrapolated) = 0.481 W/kg

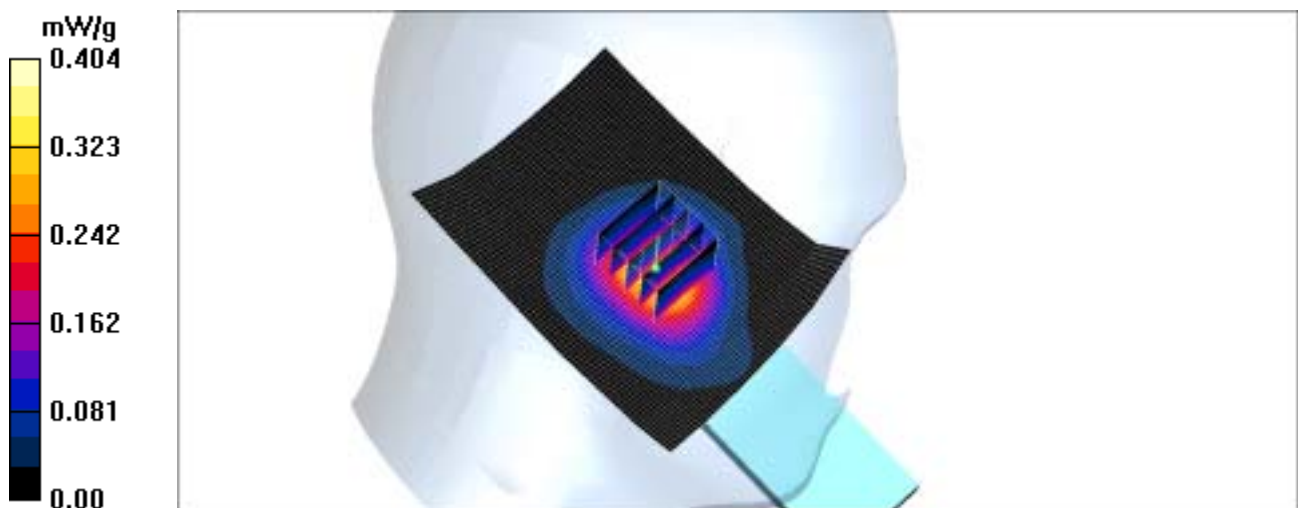
**SAR(1 g) = 0.323 mW/g**

Maximum value of SAR (measured) = 0.342 mW/g

**Ear/Tilt, Ch.661, Ant.Intenna, Bat.Standard/Area Scan (51x71x1):** Measurement grid:

dx=20mm, dy=20mm

Maximum value of SAR (interpolated) = 0.404 mW/g



## SAMSUNG FCC ID : A3LSGHE760 -- 1900MHz GSM1900 Head SAR

**DUT: SGH-E760; Serial: FC-091-B**

**Program Name: SGH-E760 GSM1900 Right (Job No. : FC-091)**

**Procedure Name: Cheek/Touch, Ch.512, Ant.Intenna, Bat.Standard With BT**

**Procedure Notes: Meas.Tissue Temp(celsius)-21.0; Test Date-29/June/2005 [OET Bulletin 65-Supplement C, July 2001]**

Communication System: GSM 1900; Frequency: 1850.2 MHz;Duty Cycle: 1:8.3

Medium parameters used:  $f = 1850.2$  MHz;  $\sigma = 1.42$  mho/m;  $\epsilon_r = 39$ ;  $\rho = 1000$  kg/m<sup>3</sup>

Phantom section: Right Section

DASY4 Configuration:

- Probe: EX3DV4 - SN3537; ConvF(8.29, 8.29, 8.29); Calibrated: 2004-12-15

- Sensor-Surface: 4mm (Mechanical Surface Detection)

- Electronics: DAE3 Sn468; Calibrated: 2004-12-07

- Phantom: SAM 1800/1900 MHz; Type: SAM; Serial: TP-1248

- Measurement SW: DASY4, V4.5 Build 19; Postprocessing SW: SEMCAD, V1.8 Build 146

### **Cheek/Touch, Ch.512, Ant.Intenna, Bat.Standard With BT/Zoom Scan**

**(5x5x7)/Cube 0:** Measurement grid: dx=8mm, dy=8mm, dz=5mm

Reference Value = 9.41 V/m; Power Drift = -0.035 dB

Peak SAR (extrapolated) = 1.18 W/kg

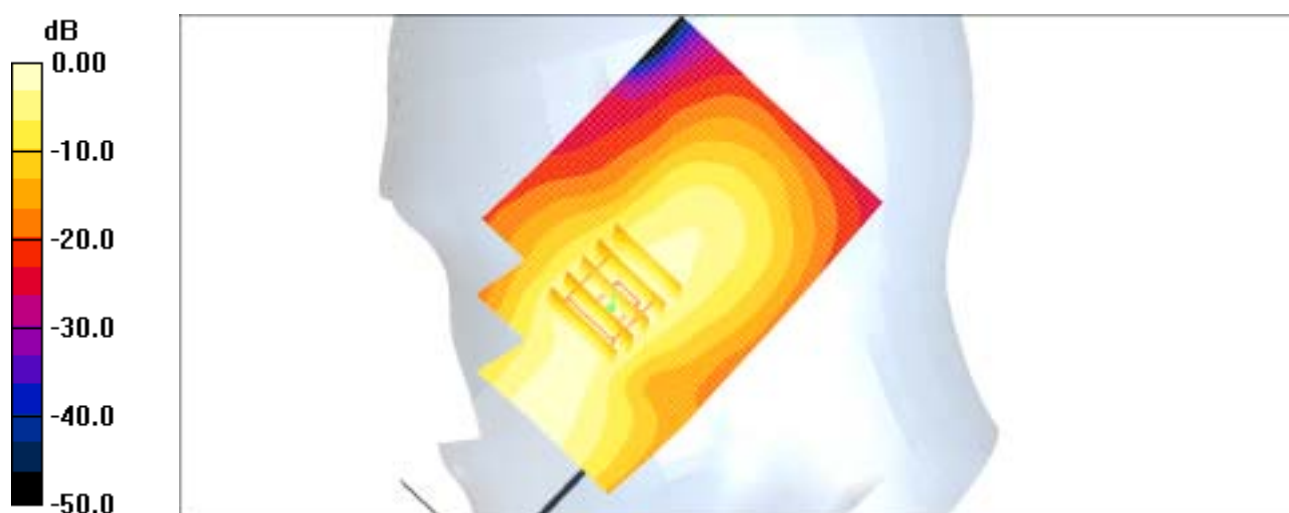
**SAR(1 g) = 0.689 mW/g**

Maximum value of SAR (measured) = 0.775 mW/g

### **Cheek/Touch, Ch.512, Ant.Intenna, Bat.Standard With BT/Area Scan (51x71x1):**

Measurement grid: dx=20mm, dy=20mm

Maximum value of SAR (interpolated) = 0.717 mW/g



0 dB = 0.717mW/g

**SAMSUNG FCC ID : A3LSGHE760 -- 1900MHz GSM1900 Body SAR**

**DUT: SGH-E760; Serial: FC-091-B**

**Program Name: SGH-E760 GSM1900 Body (Job No. : FC-091)**

**Procedure Name: Body, Ch.512, Ant.Intenna, Bat.Standard**

**Procedure Notes: Meas.Tissue Temp(celsius)-21.0;Test Date-29/June/2005[OET Bulletin 65-Supplement C, July 2001]**

Communication System: GSM 1900 GPRS; Frequency: 1850.2 MHz;Duty Cycle: 1:4.15

Medium parameters used:  $f = 1850.2$  MHz;  $\sigma = 1.52$  mho/m;  $\epsilon_r = 51.5$ ;  $\rho = 1000$  kg/m<sup>3</sup>

Phantom section: Flat Section

DASY4 Configuration:

- Probe: EX3DV4 - SN3537; ConvF(7.76, 7.76, 7.76); Calibrated: 2004-12-15

- Sensor-Surface: 4mm (Mechanical Surface Detection)

- Electronics: DAE3 Sn468; Calibrated: 2004-12-07

- Phantom: SAM 835/900 MHz; Type: SAM; Serial: TP-1247

- Measurement SW: DASY4, V4.5 Build 19; Postprocessing SW: SEMCAD, V1.8 Build 146

**Body, Ch.512, Ant.Intenna, Bat.Standard/Zoom Scan (5x5x7)/Cube 0:** Measurement grid: dx=8mm, dy=8mm, dz=5mm

Reference Value = 13.8 V/m; Power Drift = -0.099 dB

Peak SAR (extrapolated) = 0.374 W/kg

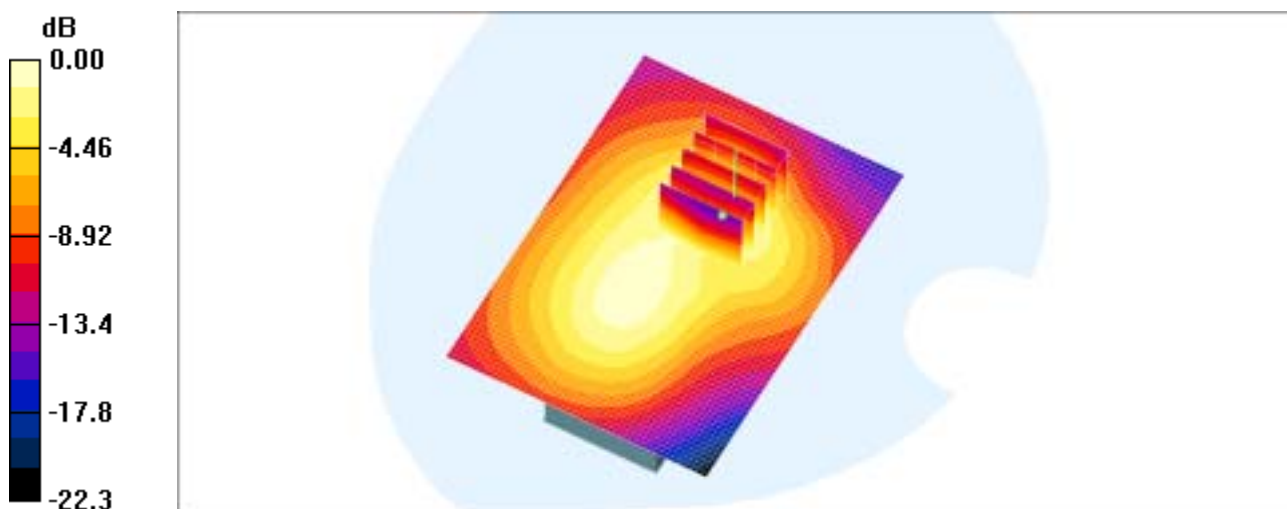
**SAR(1 g) = 0.254 mW/g**

Maximum value of SAR (measured) = 0.278 mW/g

**Body, Ch.512, Ant.Intenna, Bat.Standard/Area Scan (51x71x1):** Measurement grid:

dx=20mm, dy=20mm

Maximum value of SAR (interpolated) = 0.319 mW/g



0 dB = 0.319mW/g

**SAMSUNG FCC ID : A3LSGHE760 -- 1900MHz GSM1900 Body SAR**

**DUT: SGH-E760; Serial: FC-091-B**

**Program Name: SGH-E760 GSM1900 Body (Job No. : FC-091)**

**Procedure Name: Body, Ch.512, Ant.Intenna, Bat.Standard With BT**

**Procedure Notes: Meas.Tissue Temp(celsius)-21.0;Test Date-29/June/2005[OET Bulletin 65-Supplement C, July 2001]**

Communication System: GSM 1900 GPRS; Frequency: 1850.2 MHz;Duty Cycle: 1:4.15

Medium parameters used:  $f = 1850.2$  MHz;  $\sigma = 1.52$  mho/m;  $\epsilon_r = 51.5$ ;  $\rho = 1000$  kg/m<sup>3</sup>

Phantom section: Flat Section

DASY4 Configuration:

- Probe: EX3DV4 - SN3537; ConvF(7.76, 7.76, 7.76); Calibrated: 2004-12-15

- Sensor-Surface: 4mm (Mechanical Surface Detection)

- Electronics: DAE3 Sn468; Calibrated: 2004-12-07

- Phantom: SAM 835/900 MHz; Type: SAM; Serial: TP-1247

- Measurement SW: DASY4, V4.5 Build 19; Postprocessing SW: SEMCAD, V1.8 Build 146

**Body, Ch.512, Ant.Intenna, Bat.Standard With BT/Area Scan (51x71x1):**

Measurement grid: dx=20mm, dy=20mm

Maximum value of SAR (interpolated) = 0.389 mW/g

**Body, Ch.512, Ant.Intenna, Bat.Standard With BT/Zoom Scan (5x5x7)/Cube 0:**

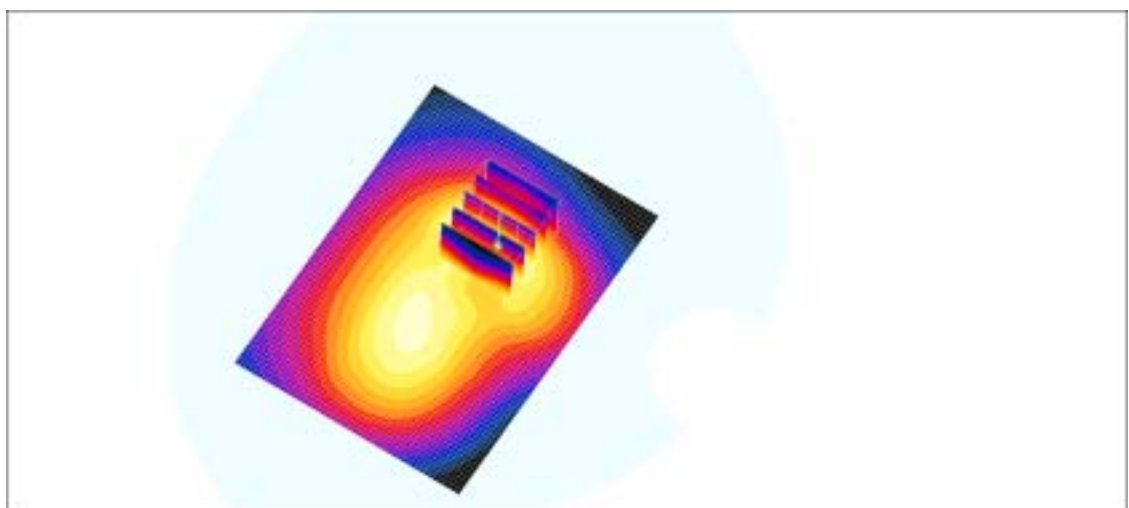
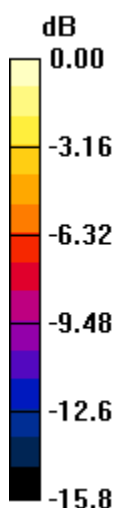
Measurement grid: dx=8mm, dy=8mm, dz=5mm

Reference Value = 15.4 V/m; Power Drift = -0.044 dB

Peak SAR (extrapolated) = 0.472 W/kg

**SAR(1 g) = 0.318 mW/g**

Maximum value of SAR (measured) = 0.339 mW/g



0 dB = 0.339mW/g

**SAMSUNG FCC ID : A3LSGHE760 -- 1900MHz GSM1900 Head SAR**

**DUT: SGH-E760; Serial: FC-091-B**

**Program Name: SGH-E760 GSM1900 Right (Job No. : FC-091)**

**Procedure Name: Cheek/Touch, Ch.512, Ant.Intenna, Bat.Standard**

**Procedure Notes: Meas.Tissue Temp(celsius)-21.0; Test Date-29/June/2005 [OET Bulletin 65-Supplement C, July 2001]**

Communication System: GSM 1900; Frequency: 1850.2 MHz;Duty Cycle: 1:8.3

Medium parameters used:  $f = 1850.2$  MHz;  $\sigma = 1.42$  mho/m;  $\epsilon_r = 39$ ;  $\rho = 1000$  kg/m<sup>3</sup>

Phantom section: Right Section

DASY4 Configuration:

- Probe: EX3DV4 - SN3537; ConvF(8.29, 8.29, 8.29); Calibrated: 2004-12-15

- Sensor-Surface: 4mm (Mechanical Surface Detection)

- Electronics: DAE3 Sn468; Calibrated: 2004-12-07

- Phantom: SAM 1800/1900 MHz; Type: SAM; Serial: TP-1248

- Measurement SW: DASY4, V4.5 Build 19; Postprocessing SW: SEMCAD, V1.8 Build 146

**Cheek/Touch, Ch.512, Ant.Intenna, Bat.Standard/Area Scan (51x71x1):** Measurement grid: dx=20mm, dy=20mm

Maximum value of SAR (interpolated) = 0.771 mW/g

**Cheek/Touch, Ch.512, Ant.Intenna, Bat.Standard/Zoom Scan (5x5x7)/Cube 0:**

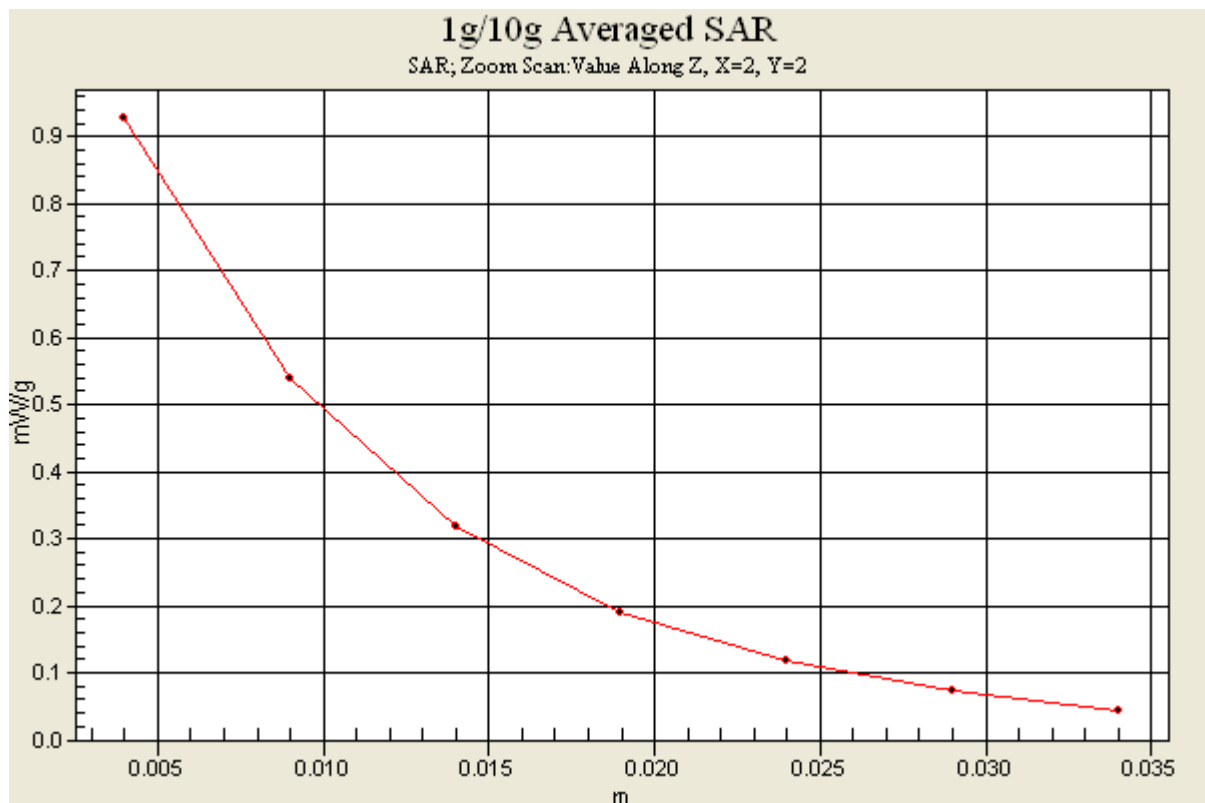
Measurement grid: dx=8mm, dy=8mm, dz=5mm

Reference Value = 7.50 V/m; Power Drift = -0.039 dB

Peak SAR (extrapolated) = 1.48 W/kg

**SAR(1 g) = 0.852 mW/g**

Maximum value of SAR (measured) = 0.927 mW/g



# SAMSUNG FCC ID : A3LSGHE760 -- 1900MHz GSM1900 Head SAR

**DUT: SGH-E760; Serial: FC-091-B**

**Program Name: SGH-E760 GSM1900 Right (Job No. : FC-091)**

**Procedure Name: Cheek/Touch, Ch.512, Ant.Intenna, Bat.Standard With BT**

**Procedure Notes: Meas.Tissue Temp(celsius)-21.0; Test Date-29/June/2005 [OET Bulletin 65-Supplement C, July 2001]**

Communication System: GSM 1900; Frequency: 1850.2 MHz; Duty Cycle: 1:8.3

Medium parameters used:  $f = 1850.2$  MHz;  $\sigma = 1.42$  mho/m;  $\epsilon_r = 39$ ;  $\rho = 1000$  kg/m<sup>3</sup>

Phantom section: Right Section

DASY4 Configuration:

- Probe: EX3DV4 - SN3537; ConvF(8.29, 8.29, 8.29); Calibrated: 2004-12-15

- Sensor-Surface: 4mm (Mechanical Surface Detection)

- Electronics: DAE3 Sn468; Calibrated: 2004-12-07

- Phantom: SAM 1800/1900 MHz; Type: SAM; Serial: TP-1248

- Measurement SW: DASY4, V4.5 Build 19; Postprocessing SW: SEMCAD, V1.8 Build 146

## Cheek/Touch, Ch.512, Ant.Intenna, Bat.Standard With BT/Zoom Scan

**(5x5x7)/Cube 0:** Measurement grid: dx=8mm, dy=8mm, dz=5mm

Reference Value = 9.41 V/m; Power Drift = -0.035 dB

Peak SAR (extrapolated) = 1.18 W/kg

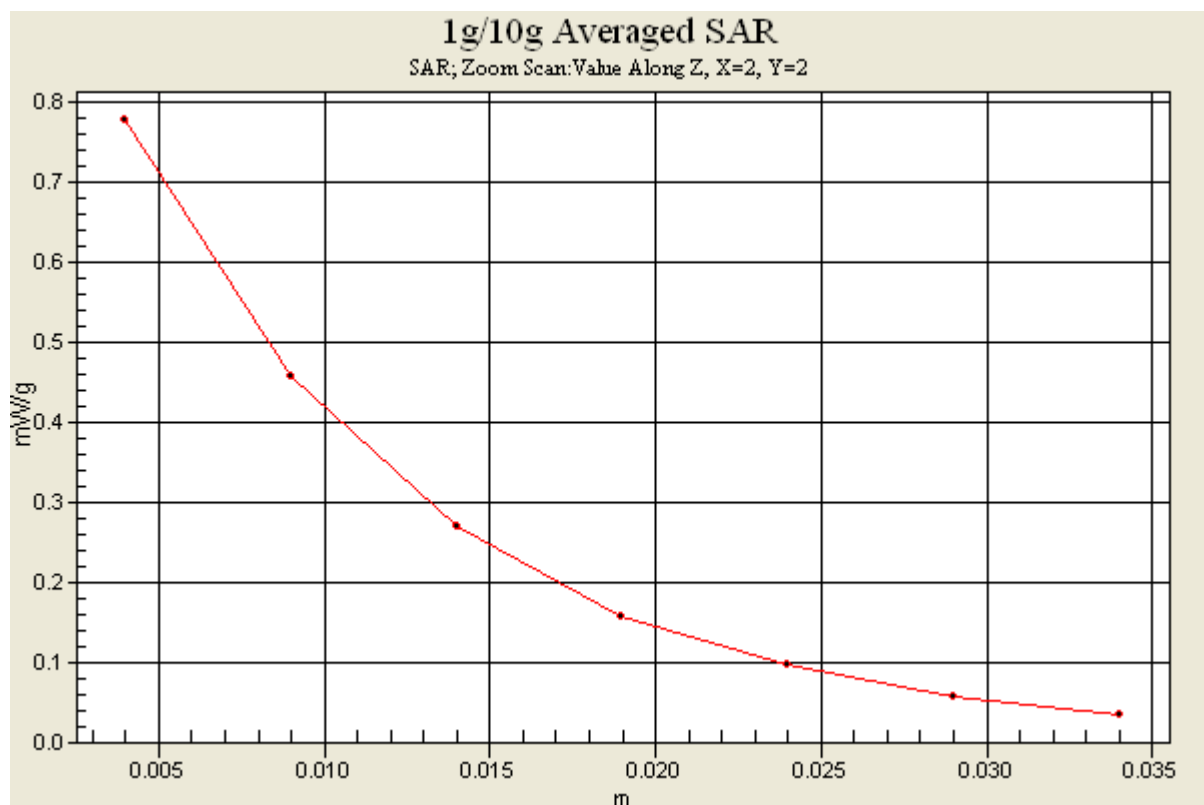
**SAR(1 g) = 0.689 mW/g**

Maximum value of SAR (measured) = 0.775 mW/g

## Cheek/Touch, Ch.512, Ant.Intenna, Bat.Standard With BT/Area Scan (51x71x1):

Measurement grid: dx=20mm, dy=20mm

Maximum value of SAR (interpolated) = 0.717 mW/g



# SAMSUNG FCC ID : A3LSGHE760 -- 1900MHz GSM1900 Body SAR

**DUT: SGH-E760; Serial: FC-091-B**

**Program Name: SGH-E760 GSM1900 Body (Job No. : FC-091)**

**Procedure Name: Body, Ch.512, Ant.Intenna, Bat.Standard**

**Procedure Notes: Meas.Tissue Temp(celsius)-21.0; Test Date-29/June/2005 [OET Bulletin 65-Supplement C, July 2001]**

Communication System: GSM 1900 GPRS; Frequency: 1850.2 MHz; Duty Cycle: 1:4.15

Medium parameters used:  $f = 1850.2$  MHz;  $\sigma = 1.52$  mho/m;  $\epsilon_r = 51.5$ ;  $\rho = 1000$  kg/m<sup>3</sup>

Phantom section: Flat Section

DASY4 Configuration:

- Probe: EX3DV4 - SN3537; ConvF(7.76, 7.76, 7.76); Calibrated: 2004-12-15

- Sensor-Surface: 4mm (Mechanical Surface Detection)

- Electronics: DAE3 Sn468; Calibrated: 2004-12-07

- Phantom: SAM 835/900 MHz; Type: SAM; Serial: TP-1247

- Measurement SW: DASY4, V4.5 Build 19; Postprocessing SW: SEMCAD, V1.8 Build 146

**Body, Ch.512, Ant.Intenna, Bat.Standard/Zoom Scan (5x5x7)/Cube 0:** Measurement grid: dx=8mm, dy=8mm, dz=5mm

Reference Value = 13.8 V/m; Power Drift = -0.099 dB

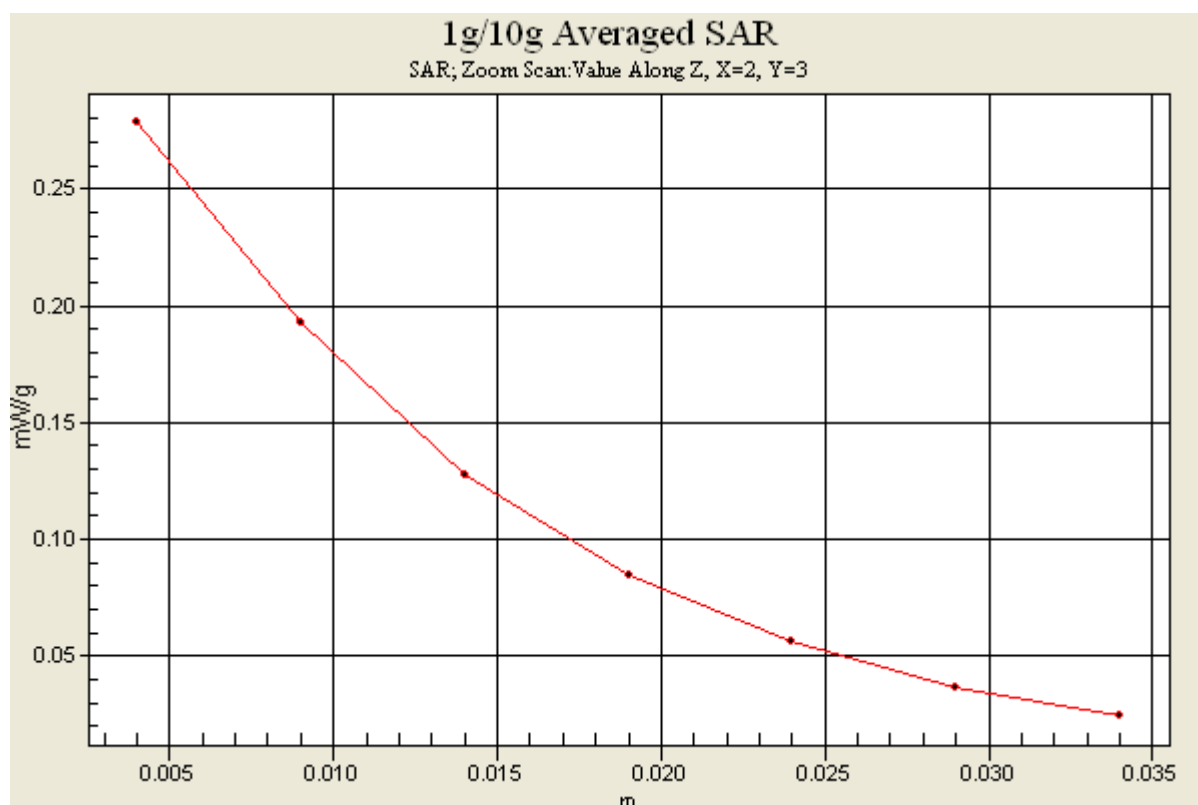
Peak SAR (extrapolated) = 0.374 W/kg

**SAR(1 g) = 0.254 mW/g**

Maximum value of SAR (measured) = 0.278 mW/g

**Body, Ch.512, Ant.Intenna, Bat.Standard/Area Scan (51x71x1):** Measurement grid: dx=20mm, dy=20mm

Maximum value of SAR (interpolated) = 0.319 mW/g



# SAMSUNG FCC ID : A3LSGHE760 -- 1900MHz GSM1900 Body SAR

**DUT: SGH-E760; Serial: FC-091-B**

**Program Name: SGH-E760 GSM1900 Body (Job No. : FC-091)**

**Procedure Name: Body, Ch.512, Ant.Intenna, Bat.Standard With BT**

**Procedure Notes: Meas.Tissue Temp(celsius)-21.0; Test Date-29/June/2005 [OET Bulletin 65-Supplement C, July 2001]**

Communication System: GSM 1900 GPRS; Frequency: 1850.2 MHz; Duty Cycle: 1:4.15

Medium parameters used:  $f = 1850.2$  MHz;  $\sigma = 1.52$  mho/m;  $\epsilon_r = 51.5$ ;  $\rho = 1000$  kg/m<sup>3</sup>

Phantom section: Flat Section

DASY4 Configuration:

- Probe: EX3DV4 - SN3537; ConvF(7.76, 7.76, 7.76); Calibrated: 2004-12-15

- Sensor-Surface: 4mm (Mechanical Surface Detection)

- Electronics: DAE3 Sn468; Calibrated: 2004-12-07

- Phantom: SAM 835/900 MHz; Type: SAM; Serial: TP-1247

- Measurement SW: DASY4, V4.5 Build 19; Postprocessing SW: SEMCAD, V1.8 Build 146

## **Body, Ch.512, Ant.Intenna, Bat.Standard With BT/Area Scan (51x71x1):**

Measurement grid: dx=20mm, dy=20mm

Maximum value of SAR (interpolated) = 0.389 mW/g

## **Body, Ch.512, Ant.Intenna, Bat.Standard With BT/Zoom Scan (5x5x7)/Cube 0:**

Measurement grid: dx=8mm, dy=8mm, dz=5mm

Reference Value = 15.4 V/m; Power Drift = -0.044 dB

Peak SAR (extrapolated) = 0.472 W/kg

**SAR(1 g) = 0.318 mW/g**

Maximum value of SAR (measured) = 0.339 mW/g

