

## **APPENDIX F**

### **The Validation Measurements**

**DUT: Dipole 1900 MHz; Serial: 5d023**  
**Program Name: 1900 Dipole Validation 2005.09.21**  
**Procedure Name: 1900MHz @250mW**

Communication System: CW; Frequency: 1900 MHz; Duty Cycle: 1:1  
Medium parameters used:  $f = 1900$  MHz;  $\sigma = 1.41$  mho/m;  $\epsilon_r = 38.8$ ;  $\rho = 1000$  kg/m<sup>3</sup>  
Phantom section: Flat Section

DASY4 Configuration:

- Probe: EX3DV4 - SN3537; ConvF(8.29, 8.29, 8.29); Calibrated: 2004-12-15
- Sensor-Surface: 4mm (Mechanical Surface Detection)
- Electronics: DAE3 Sn468; Calibrated: 2004-12-07
- Phantom: SAM 1800/1900 MHz; Type: SAM; Serial: TP-1248
- Measurement SW: DASY4, V4.5 Build 19; Postprocessing SW: SEMCAD, V1.8 Build 146

**1900MHz @250mW/Zoom Scan (5x5x7)/Cube 0:** Measurement grid: dx=8mm, dy=8mm, dz=5mm

Reference Value = 89.8 V/m; Power Drift = -0.033 dB

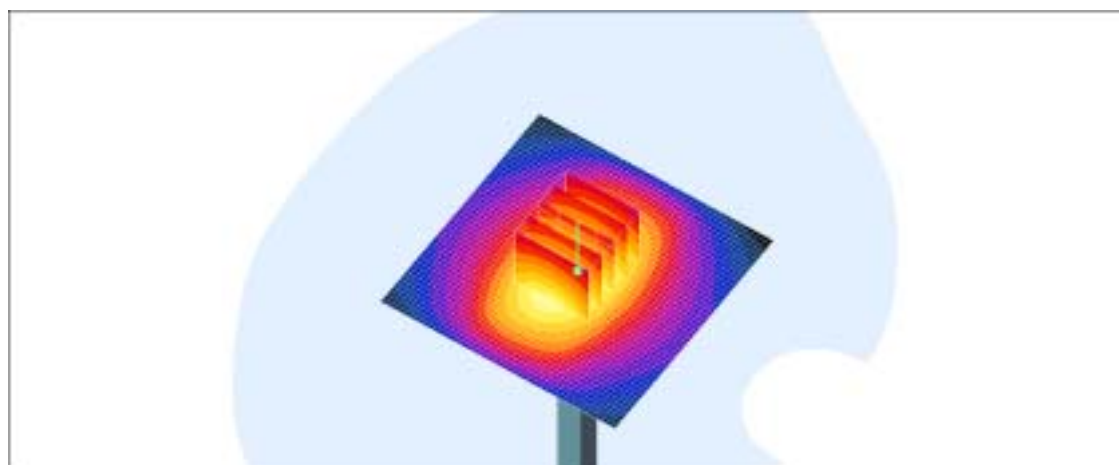
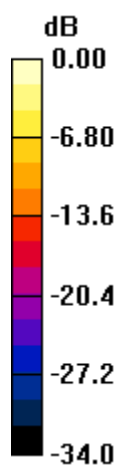
Peak SAR (extrapolated) = 19.0 W/kg

**SAR(1 g) = 10.1 mW/g**

Maximum value of SAR (measured) = 11.4 mW/g

**1900MHz @250mW/Area Scan (51x51x1):** Measurement grid: dx=20mm, dy=20mm

Maximum value of SAR (interpolated) = 15.4 mW/g



0 dB = 15.4mW/g