

SAMSUNG FCC ID : A3LSGHD800 1900MHz GSM1900 Head SAR

DUT: SGH-D800; Serial: FC-139-A

Program Name: SGH-D800 GSM1900 Right (Slide.Down, Job No. : FC-139)

Procedure Name: Ear/Tilt, Ch.661, Ant.Intenna, Bat.Standard

Procedure Notes: Meas.Tissue Temp(celsius)-22.3; Test Date-10/Oct/2005 [OET Bulletin 65-Supplement C, July 2001]

Communication System: GSM 1900; Frequency: 1880 MHz;Duty Cycle: 1:8.3

Medium parameters used: $f = 1880$ MHz; $\sigma = 1.39$ mho/m; $\epsilon_r = 39.5$; $\rho = 1000$ kg/m³

Phantom section: Right Section

DASY4 Configuration:

- Probe: EX3DV4 - SN3537; ConvF(8.29, 8.29, 8.29); Calibrated: 2004-12-15
- Sensor-Surface: 4mm (Mechanical Surface Detection)
- Electronics: DAE3 Sn468; Calibrated: 2004-12-07
- Phantom: SAM 1800/1900 MHz; Type: SAM; Serial: TP-1248
- Measurement SW: DASY4, V4.6 Build 19; Postprocessing SW: SEMCAD, V1.8 Build 159

Ear/Tilt, Ch.661, Ant.Intenna, Bat.Standard/Zoom Scan (5x5x7)/Cube 0: Measurement grid: dx=8mm, dy=8mm, dz=5mm

Reference Value = 14.2 V/m; Power Drift = 0.009 dB

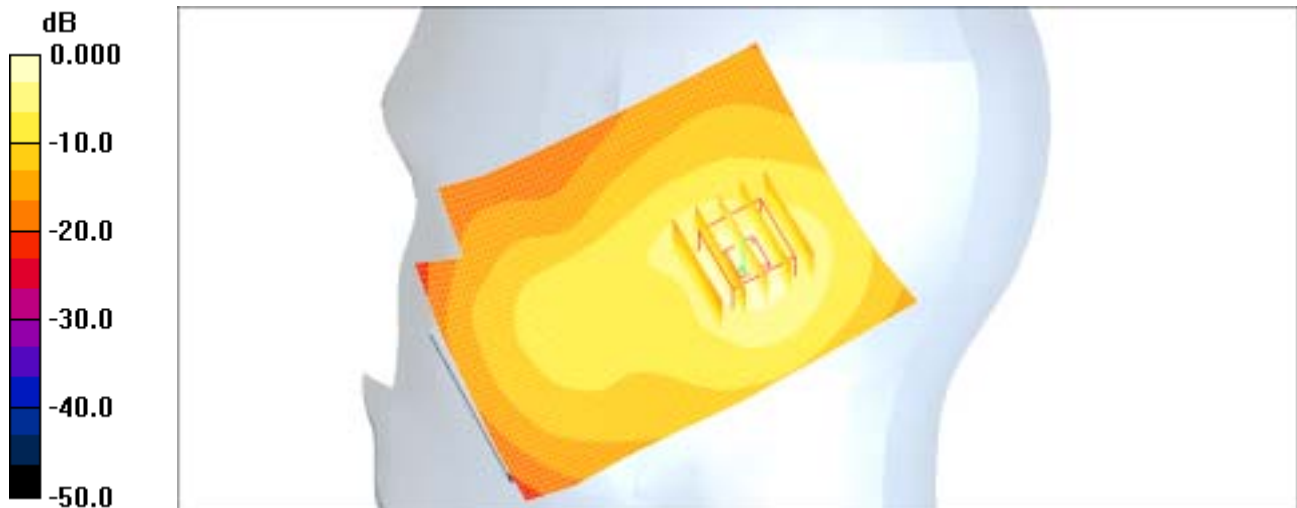
Peak SAR (extrapolated) = 0.494 W/kg

SAR(1 g) = 0.297 mW/g

Maximum value of SAR (measured) = 0.330 mW/g

Ear/Tilt, Ch.661, Ant.Intenna, Bat.Standard/Area Scan (51x71x1): Measurement grid: dx=20mm, dy=20mm

Maximum value of SAR (interpolated) = 0.312 mW/g



0 dB = 0.312mW/g

SAMSUNG FCC ID : A3LSGHD800 1900MHz GSM1900 Head SAR

DUT: SGH-D800; Serial: FC-139-A

Program Name: SGH-D800 GSM1900 Right (Slide.Down, Job No. : FC-139)

Procedure Name: Cheek/Touch, Ch.661, Ant.Intenna, Bat.Standard

Procedure Notes: Meas.Tissue Temp(celsius)-22.3; Test Date-10/Oct/2005 [OET Bulletin 65-Supplement C, July 2001]

Communication System: GSM 1900; Frequency: 1880 MHz;Duty Cycle: 1:8.3

Medium parameters used: $f = 1880$ MHz; $\sigma = 1.39$ mho/m; $\epsilon_r = 39.5$; $\rho = 1000$ kg/m³

Phantom section: Right Section

DASY4 Configuration:

- Probe: EX3DV4 - SN3537; ConvF(8.29, 8.29, 8.29); Calibrated: 2004-12-15
- Sensor-Surface: 4mm (Mechanical Surface Detection)
- Electronics: DAE3 Sn468; Calibrated: 2004-12-07
- Phantom: SAM 1800/1900 MHz; Type: SAM; Serial: TP-1248
- Measurement SW: DASY4, V4.6 Build 19; Postprocessing SW: SEMCAD, V1.8 Build 159

Cheek/Touch, Ch.661, Ant.Intenna, Bat.Standard/Zoom Scan (5x5x7)/Cube 0:

Measurement grid: dx=8mm, dy=8mm, dz=5mm

Reference Value = 13.0 V/m; Power Drift = 0.095 dB

Peak SAR (extrapolated) = 0.438 W/kg

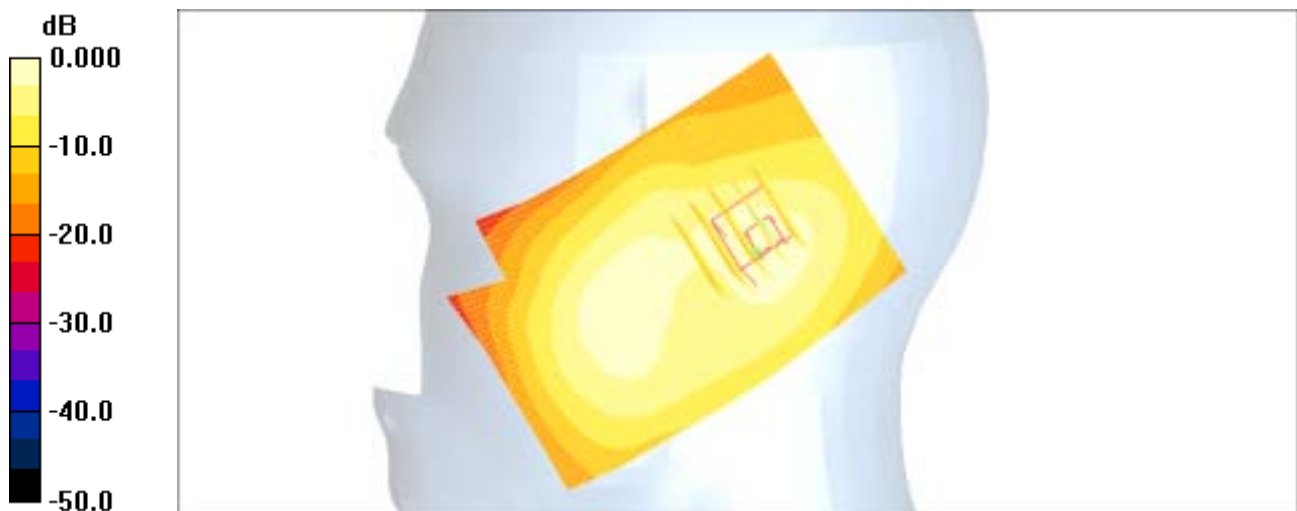
SAR(1 g) = 0.265 mW/g

Maximum value of SAR (measured) = 0.287 mW/g

Cheek/Touch, Ch.661, Ant.Intenna, Bat.Standard/Area Scan (51x71x1): Measurement

grid: dx=20mm, dy=20mm

Maximum value of SAR (interpolated) = 0.258 mW/g



0 dB = 0.258mW/g

SAMSUNG FCC ID : A3LSGHD800 1900MHz GSM1900 Head SAR

DUT: SGH-D800; Serial: FC-139-A

Program Name: SGH-D800 GSM1900 Left (Slide.Down, Job No. : FC-139)

Procedure Name: Ear/Tilt, Ch.661, Ant.Intenna, Bat.Standard

Procedure Notes: Meas.Tissue Temp(celsius)-22.3; Test Date-10/Oct/2005 [OET Bulletin 65-Supplement C, July 2001]

Communication System: GSM 1900; Frequency: 1880 MHz;Duty Cycle: 1:8.3

Medium parameters used: $f = 1880$ MHz; $\sigma = 1.39$ mho/m; $\epsilon_r = 39.5$; $\rho = 1000$ kg/m³

Phantom section: Left Section

DASY4 Configuration:

- Probe: EX3DV4 - SN3537; ConvF(8.29, 8.29, 8.29); Calibrated: 2004-12-15
- Sensor-Surface: 4mm (Mechanical Surface Detection)
- Electronics: DAE3 Sn468; Calibrated: 2004-12-07
- Phantom: SAM 1800/1900 MHz; Type: SAM; Serial: TP-1248
- Measurement SW: DASY4, V4.6 Build 19; Postprocessing SW: SEMCAD, V1.8 Build 159

Ear/Tilt, Ch.661, Ant.Intenna, Bat.Standard/Zoom Scan (5x5x7)/Cube 0: Measurement

grid: dx=8mm, dy=8mm, dz=5mm

Reference Value = 14.8 V/m; Power Drift = 0.008 dB

Peak SAR (extrapolated) = 0.609 W/kg

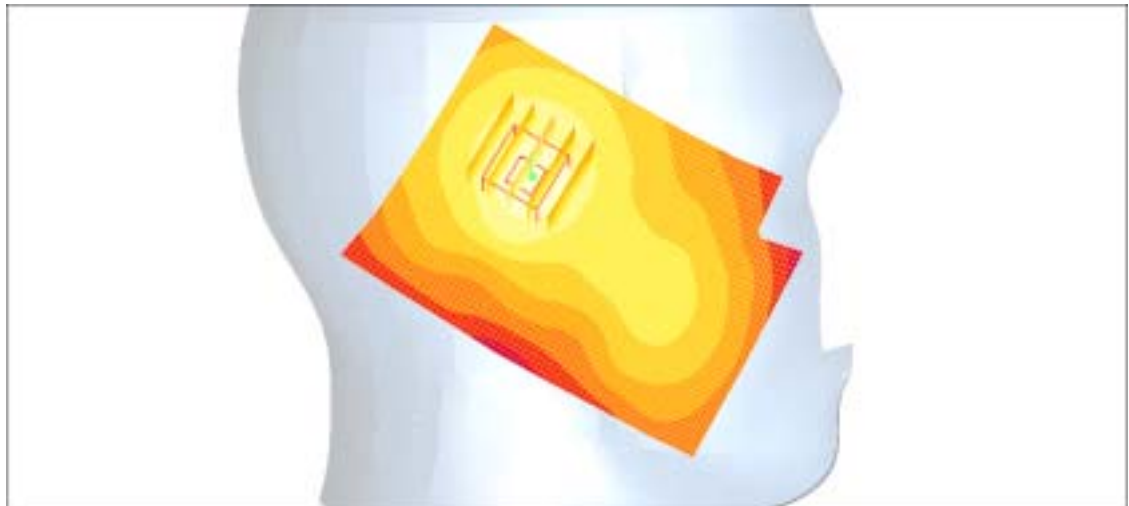
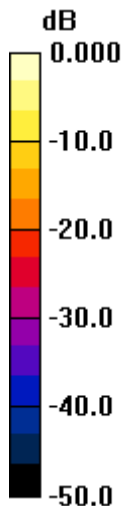
SAR(1 g) = 0.352 mW/g

Maximum value of SAR (measured) = 0.406 mW/g

Ear/Tilt, Ch.661, Ant.Intenna, Bat.Standard/Area Scan (51x71x1): Measurement grid:

dx=20mm, dy=20mm

Maximum value of SAR (interpolated) = 0.384 mW/g



0 dB = 0.384mW/g

SAMSUNG FCC ID : A3LSGHD800 1900MHz GSM1900 Head SAR

DUT: SGH-D800; Serial: FC-139-A

Program Name: SGH-D800 GSM1900 Left (Slide.Down, Job No. : FC-139)

Procedure Name: Cheek/Touch, Ch.661, Ant.Intenna, Bat.Standard

Procedure Notes: Meas.Tissue Temp(celsius)-22.3; Test Date-10/Oct/2005 [OET Bulletin 65-Supplement C, July 2001]

Communication System: GSM 1900; Frequency: 1880 MHz;Duty Cycle: 1:8.3

Medium parameters used: $f = 1880$ MHz; $\sigma = 1.39$ mho/m; $\epsilon_r = 39.5$; $\rho = 1000$ kg/m³

Phantom section: Left Section

DASY4 Configuration:

- Probe: EX3DV4 - SN3537; ConvF(8.29, 8.29, 8.29); Calibrated: 2004-12-15
- Sensor-Surface: 4mm (Mechanical Surface Detection)
- Electronics: DAE3 Sn468; Calibrated: 2004-12-07
- Phantom: SAM 1800/1900 MHz; Type: SAM; Serial: TP-1248
- Measurement SW: DASY4, V4.6 Build 19; Postprocessing SW: SEMCAD, V1.8 Build 159

Cheek/Touch, Ch.661, Ant.Intenna, Bat.Standard/Zoom Scan (5x5x7)/Cube 0:

Measurement grid: dx=8mm, dy=8mm, dz=5mm

Reference Value = 13.1 V/m; Power Drift = -0.078 dB

Peak SAR (extrapolated) = 0.542 W/kg

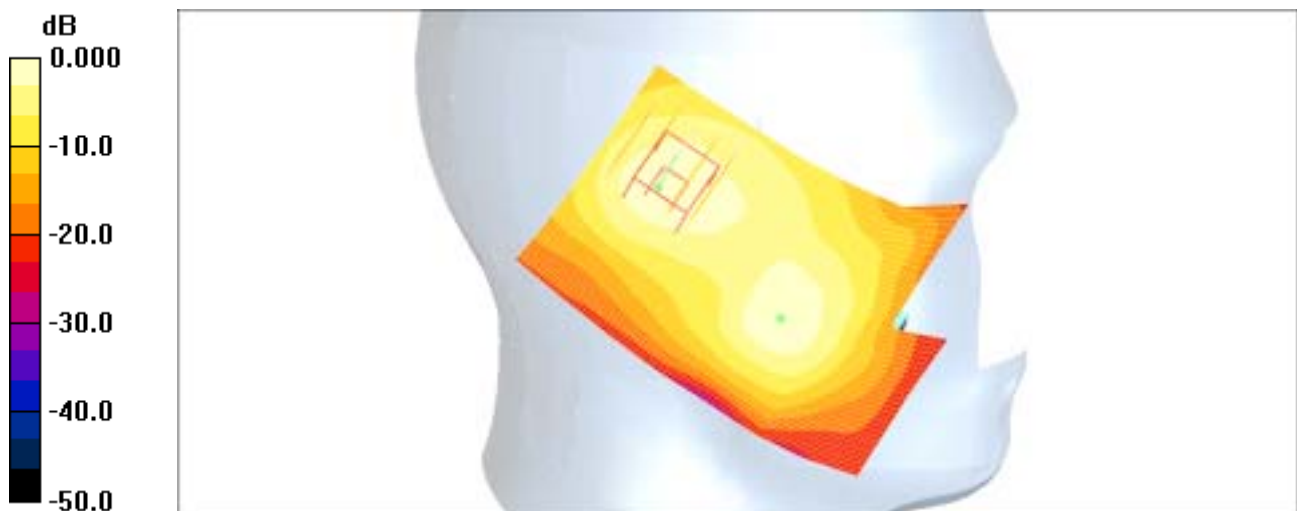
SAR(1 g) = 0.312 mW/g

Maximum value of SAR (measured) = 0.346 mW/g

Cheek/Touch, Ch.661, Ant.Intenna, Bat.Standard/Area Scan (51x71x1): Measurement

grid: dx=20mm, dy=20mm

Maximum value of SAR (interpolated) = 0.322 mW/g



0 dB = 0.322mW/g

SAMSUNG FCC ID : A3LSGHD800 1900MHz GSM1900 Head SAR

DUT: SGH-D800; Serial: FC-139-A

Program Name: SGH-D800 GSM1900 Left (Slide.Down, Job No. : FC-139)

Procedure Name: Ear/Tilt, Ch.661, Ant.Intenna, Bat.Standard With BT ON

Procedure Notes: Meas.Tissue Temp(celsius)-22.3; Test Date-10/Oct/2005 [OET Bulletin 65-Supplement C, July 2001]

Communication System: GSM 1900; Frequency: 1880 MHz;Duty Cycle: 1:8.3

Medium parameters used: $f = 1880$ MHz; $\sigma = 1.39$ mho/m; $\epsilon_r = 39.5$; $\rho = 1000$ kg/m³

Phantom section: Left Section

DASY4 Configuration:

- Probe: EX3DV4 - SN3537; ConvF(8.29, 8.29, 8.29); Calibrated: 2004-12-15
- Sensor-Surface: 4mm (Mechanical Surface Detection)
- Electronics: DAE3 Sn468; Calibrated: 2004-12-07
- Phantom: SAM 1800/1900 MHz; Type: SAM; Serial: TP-1248
- Measurement SW: DASY4, V4.6 Build 19; Postprocessing SW: SEMCAD, V1.8 Build 159

Ear/Tilt, Ch.661, Ant.Intenna, Bat.Standard With BT ON/Zoom Scan (5x5x7)/Cube

0: Measurement grid: dx=8mm, dy=8mm, dz=5mm

Reference Value = 14.9 V/m; Power Drift = -0.189 dB

Peak SAR (extrapolated) = 0.655 W/kg

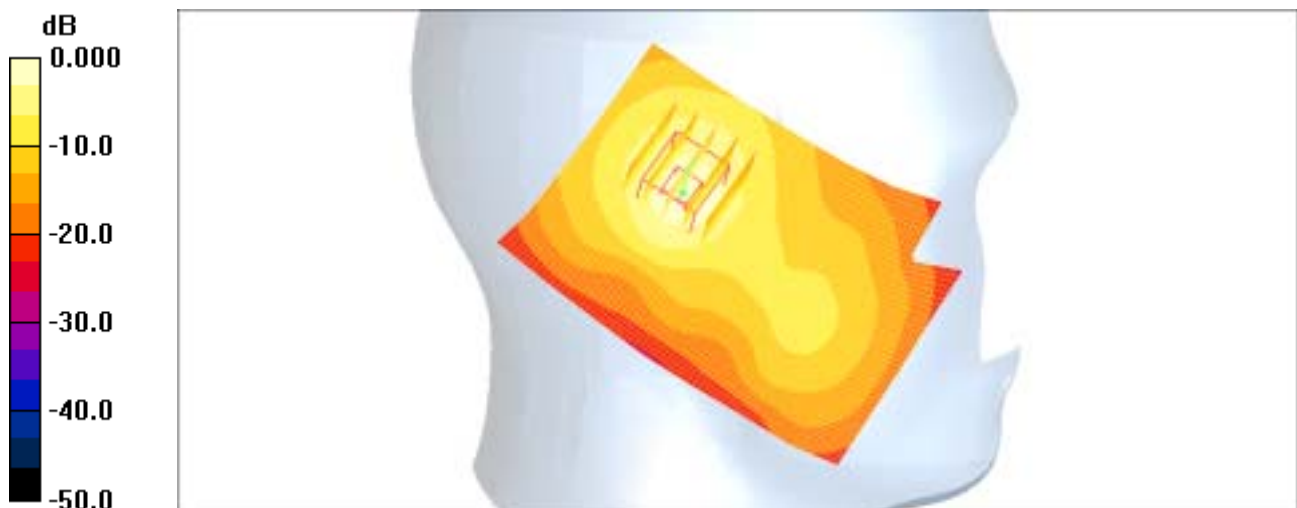
SAR(1 g) = 0.376 mW/g

Maximum value of SAR (measured) = 0.439 mW/g

Ear/Tilt, Ch.661, Ant.Intenna, Bat.Standard With BT ON/Area Scan (51x71x1):

Measurement grid: dx=20mm, dy=20mm

Maximum value of SAR (interpolated) = 0.422 mW/g



0 dB = 0.422mW/g

SAMSUNG FCC ID : A3LSGHD800 1900MHz GPRS1900 Body SAR

DUT: SGH-D800(Body); Serial: FC-139-A

Program Name: SGH-D800 GSM1900 Body (Job No. : FC-139)

Procedure Name: Body, Ch.661, Ant.Intenna, Bat.Standard

Procedure Notes: Meas.Tissue Temp(celsius)-22.0; Test Date-10/Oct/2005 [OET Bulletin 65-Supplement C, July 2001]

Communication System: Body GPRS ; Frequency: 1880 MHz;Duty Cycle: 1:4.15

Medium parameters used: $f = 1880$ MHz; $\sigma = 1.53$ mho/m; $\epsilon_r = 52.6$; $\rho = 1000$ kg/m³

Phantom section: Flat Section

DASY4 Configuration:

- Probe: EX3DV4 - SN3537; ConvF(7.76, 7.76, 7.76); Calibrated: 2004-12-15
- Sensor-Surface: 4mm (Mechanical Surface Detection)
- Electronics: DAE3 Sn468; Calibrated: 2004-12-07
- Phantom: SAM 1800/1900 MHz; Type: SAM; Serial: TP-1247
- Measurement SW: DASY4, V4.6 Build 19; Postprocessing SW: SEMCAD, V1.8 Build 159

Body, Ch.661, Ant.Intenna, Bat.Standard/Area Scan (51x71x1): Measurement grid:

$dx=20$ mm, $dy=20$ mm

Maximum value of SAR (interpolated) = 1.61 mW/g

Body, Ch.661, Ant.Intenna, Bat.Standard/Zoom Scan (5x5x7)/Cube 0: Measurement

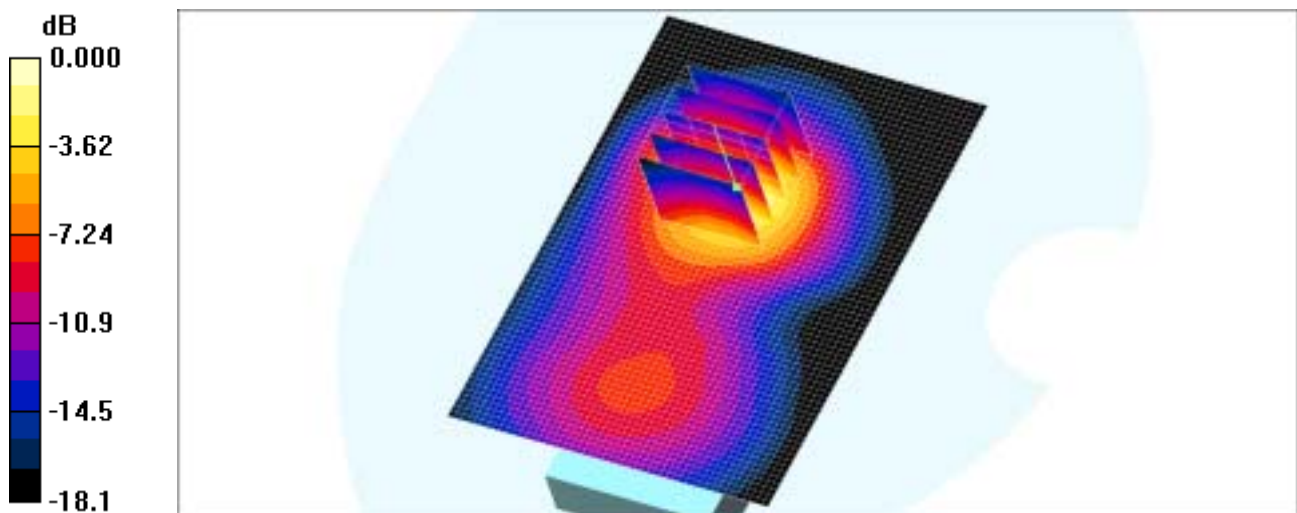
grid: $dx=8$ mm, $dy=8$ mm, $dz=5$ mm

Reference Value = 31.4 V/m; Power Drift = -0.153 dB

Peak SAR (extrapolated) = 2.44 W/kg

SAR(1 g) = 1.45 mW/g

Maximum value of SAR (measured) = 1.63 mW/g



0 dB = 1.63mW/g

SAMSUNG FCC ID : A3LSGHD800 1900MHz GPRS1900 Body SAR

DUT: SGH-D800(Body); Serial: FC-139-A

Program Name: SGH-D800 GSM1900 Body (Job No. : FC-139)

Procedure Name: Body, Ch.661, Ant.Intenna, Bat.Standard with BT

Procedure Notes: Meas.Tissue Temp(celsius)-22.0; Test Date-10/Oct/2005 [OET Bulletin 65-Supplement C, July 2001]

Communication System: Body GPRS ; Frequency: 1880 MHz;Duty Cycle: 1:4.15

Medium parameters used: $f = 1880$ MHz; $\sigma = 1.53$ mho/m; $\epsilon_r = 52.6$; $\rho = 1000$ kg/m³

Phantom section: Flat Section

DASY4 Configuration:

- Probe: EX3DV4 - SN3537; ConvF(7.76, 7.76, 7.76); Calibrated: 2004-12-15
- Sensor-Surface: 4mm (Mechanical Surface Detection)
- Electronics: DAE3 Sn468; Calibrated: 2004-12-07
- Phantom: SAM 1800/1900 MHz; Type: SAM; Serial: TP-1247
- Measurement SW: DASY4, V4.6 Build 19; Postprocessing SW: SEMCAD, V1.8 Build 159

Body, Ch.661, Ant.Intenna, Bat.Standard with BT/Zoom Scan (5x5x7)/Cube 0:

Measurement grid: dx=8mm, dy=8mm, dz=5mm

Reference Value = 30.8 V/m; Power Drift = -0.007 dB

Peak SAR (extrapolated) = 2.43 W/kg

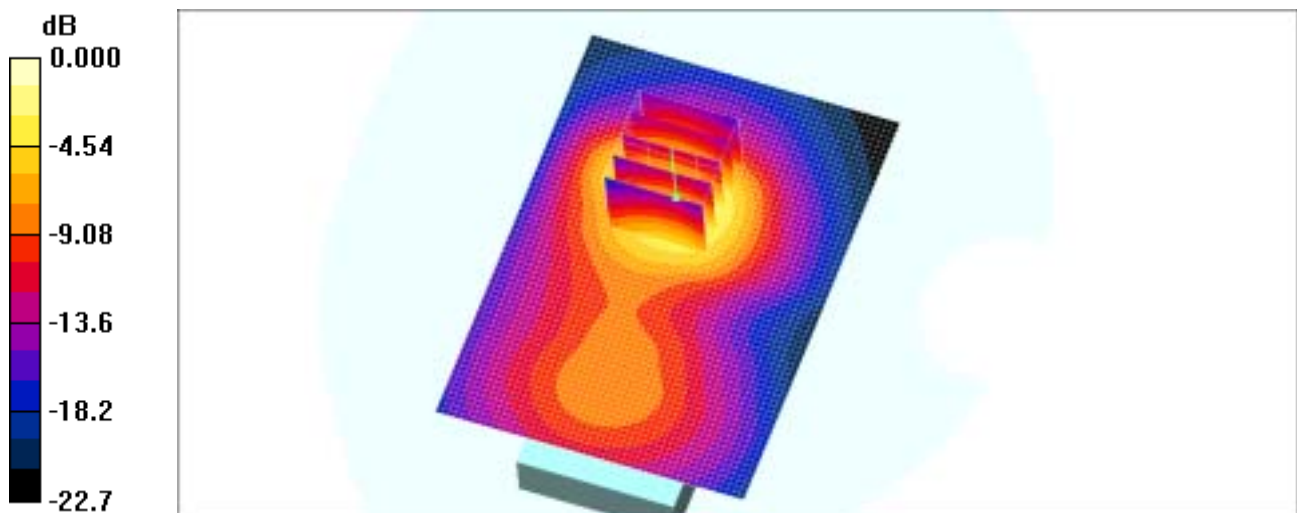
SAR(1 g) = 1.44 mW/g

Maximum value of SAR (measured) = 1.63 mW/g

Body, Ch.661, Ant.Intenna, Bat.Standard with BT/Area Scan (51x71x1): Measurement

grid: dx=20mm, dy=20mm

Maximum value of SAR (interpolated) = 1.53 mW/g



0 dB = 1.53mW/g

SAMSUNG FCC ID : A3LSGHD800 1900MHz GSM1900 Head SAR

DUT: SGH-D800; Serial: FC-139-A

Program Name: SGH-D800 GSM1900 Left (Slide.Down, Job No. : FC-139)

Procedure Name: Ear/Tilt, Ch.661, Ant.Intenna, Bat.Standard With BT ON

Procedure Notes: Meas.Tissue Temp(celsius)-22.3; Test Date-10/Oct/2005 [OET Bulletin 65-Supplement C, July 2001]

Communication System: GSM 1900; Frequency: 1880 MHz;Duty Cycle: 1:8.3

Medium parameters used: $f = 1880$ MHz; $\sigma = 1.39$ mho/m; $\epsilon_r = 39.5$; $\rho = 1000$ kg/m³

Phantom section: Left Section

DASY4 Configuration:

- Probe: EX3DV4 - SN3537; ConvF(8.29, 8.29, 8.29); Calibrated: 2004-12-15
- Sensor-Surface: 4mm (Mechanical Surface Detection)
- Electronics: DAE3 Sn468; Calibrated: 2004-12-07
- Phantom: SAM 1800/1900 MHz; Type: SAM; Serial: TP-1248
- Measurement SW: DASY4, V4.6 Build 19; Postprocessing SW: SEMCAD, V1.8 Build 159

Ear/Tilt, Ch.661, Ant.Intenna, Bat.Standard With BT ON/Zoom Scan (5x5x7)/Cube

0: Measurement grid: dx=8mm, dy=8mm, dz=5mm

Reference Value = 14.9 V/m; Power Drift = -0.189 dB

Peak SAR (extrapolated) = 0.655 W/kg

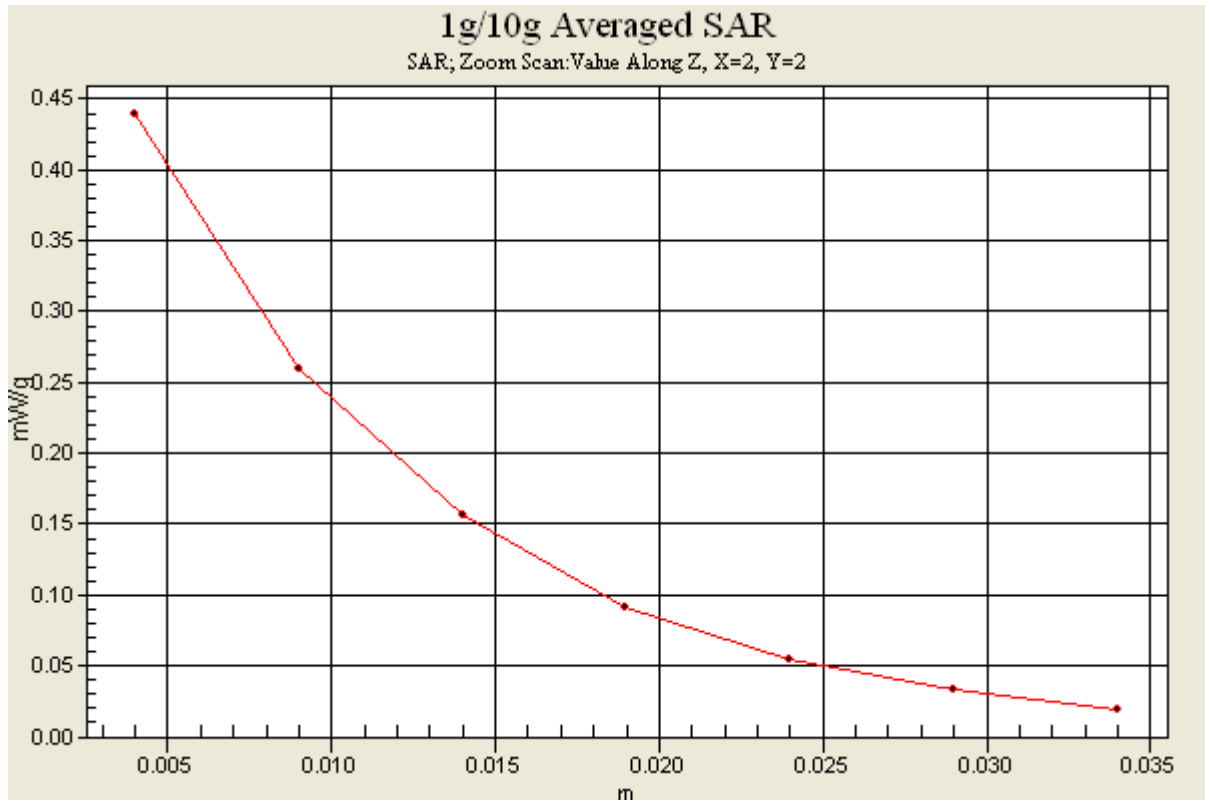
SAR(1 g) = 0.376 mW/g

Maximum value of SAR (measured) = 0.439 mW/g

Ear/Tilt, Ch.661, Ant.Intenna, Bat.Standard With BT ON/Area Scan (51x71x1):

Measurement grid: dx=20mm, dy=20mm

Maximum value of SAR (interpolated) = 0.422 mW/g



SAMSUNG FCC ID : A3LSGHD800 1900MHz GSM1900 Head SAR

DUT: SGH-D800; Serial: FC-139-A

Program Name: SGH-D800 GSM1900 Left (Slide.Down, Job No. : FC-139)

Procedure Name: Ear/Tilt, Ch.661, Ant.Intenna, Bat.Standard

Procedure Notes: Meas.Tissue Temp(celsius)-22.3; Test Date-10/Oct/2005 [OET Bulletin 65-Supplement C, July 2001]

Communication System: GSM 1900; Frequency: 1880 MHz;Duty Cycle: 1:8.3

Medium parameters used: $f = 1880$ MHz; $\sigma = 1.39$ mho/m; $\epsilon_r = 39.5$; $\rho = 1000$ kg/m³

Phantom section: Left Section

DASY4 Configuration:

- Probe: EX3DV4 - SN3537; ConvF(8.29, 8.29, 8.29); Calibrated: 2004-12-15

- Sensor-Surface: 4mm (Mechanical Surface Detection)

- Electronics: DAE3 Sn468; Calibrated: 2004-12-07

- Phantom: SAM 1800/1900 MHz; Type: SAM; Serial: TP-1248

- Measurement SW: DASY4, V4.6 Build 19; Postprocessing SW: SEMCAD, V1.8 Build 159

Ear/Tilt, Ch.661, Ant.Intenna, Bat.Standard/Zoom Scan (5x5x7)/Cube 0: Measurement grid: dx=8mm, dy=8mm, dz=5mm

Reference Value = 14.8 V/m; Power Drift = 0.008 dB

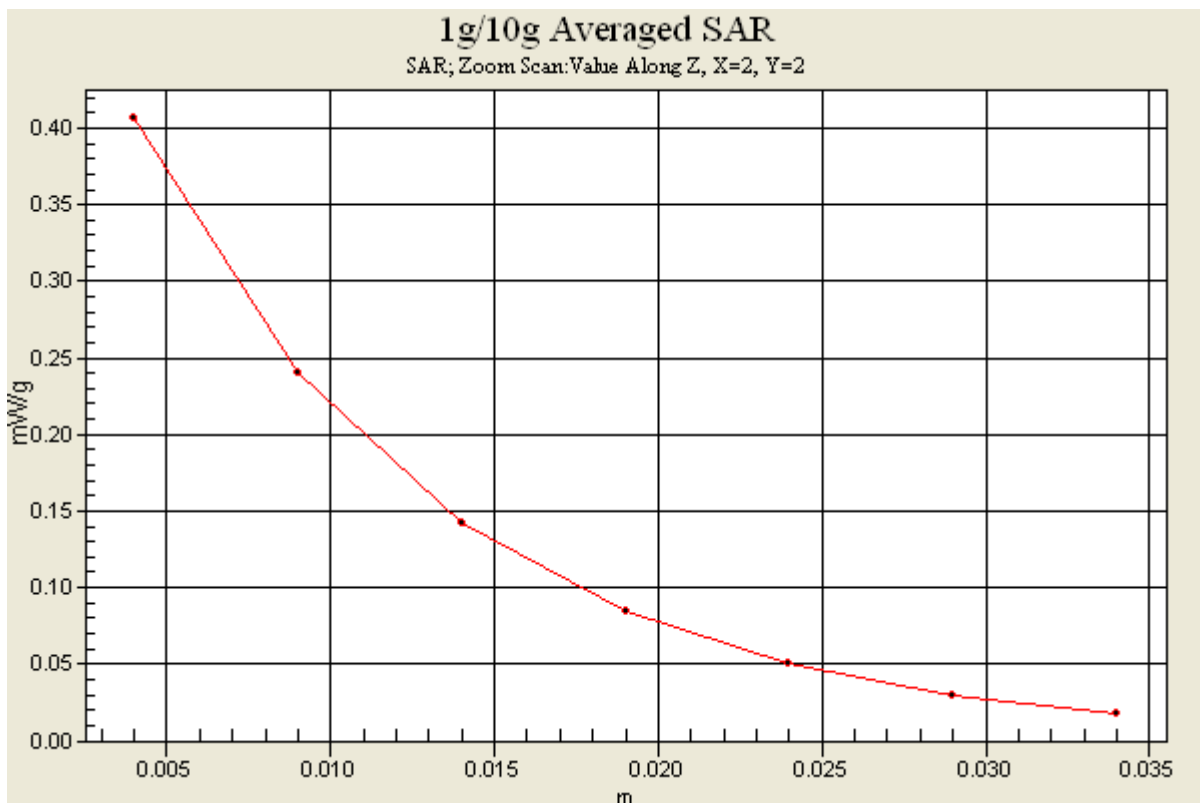
Peak SAR (extrapolated) = 0.609 W/kg

SAR(1 g) = 0.352 mW/g; SAR(10 g) = 0.181 mW/g

Maximum value of SAR (measured) = 0.406 mW/g

Ear/Tilt, Ch.661, Ant.Intenna, Bat.Standard/Area Scan (51x71x1): Measurement grid: dx=20mm, dy=20mm

Maximum value of SAR (interpolated) = 0.384 mW/g



SAMSUNG FCC ID : A3LSGHD800 1900MHz GPRS1900 Body SAR

DUT: SGH-D800(Body); Serial: FC-139-A

Program Name: SGH-D800 GSM1900 Body (Job No. : FC-139)

Procedure Name: Body, Ch.661, Ant.Intenna, Bat.Standard

Procedure Notes: Meas.Tissue Temp(celsius)-22.0; Test Date-10/Oct/2005 [OET Bulletin 65-Supplement C, July 2001]

Communication System: Body GPRS ; Frequency: 1880 MHz;Duty Cycle: 1:4.15

Medium parameters used: $f = 1880$ MHz; $\sigma = 1.53$ mho/m; $\epsilon_r = 52.6$; $\rho = 1000$ kg/m³

Phantom section: Flat Section

DASY4 Configuration:

- Probe: EX3DV4 - SN3537; ConvF(7.76, 7.76, 7.76); Calibrated: 2004-12-15

- Sensor-Surface: 4mm (Mechanical Surface Detection)

- Electronics: DAE3 Sn468; Calibrated: 2004-12-07

- Phantom: SAM 1800/1900 MHz; Type: SAM; Serial: TP-1247

- Measurement SW: DASY4, V4.6 Build 19; Postprocessing SW: SEMCAD, V1.8 Build 159

Body, Ch.661, Ant.Intenna, Bat.Standard/Area Scan (51x71x1): Measurement grid:

$dx=20$ mm, $dy=20$ mm

Maximum value of SAR (interpolated) = 1.61 mW/g

Body, Ch.661, Ant.Intenna, Bat.Standard/Zoom Scan (5x5x7)/Cube 0: Measurement

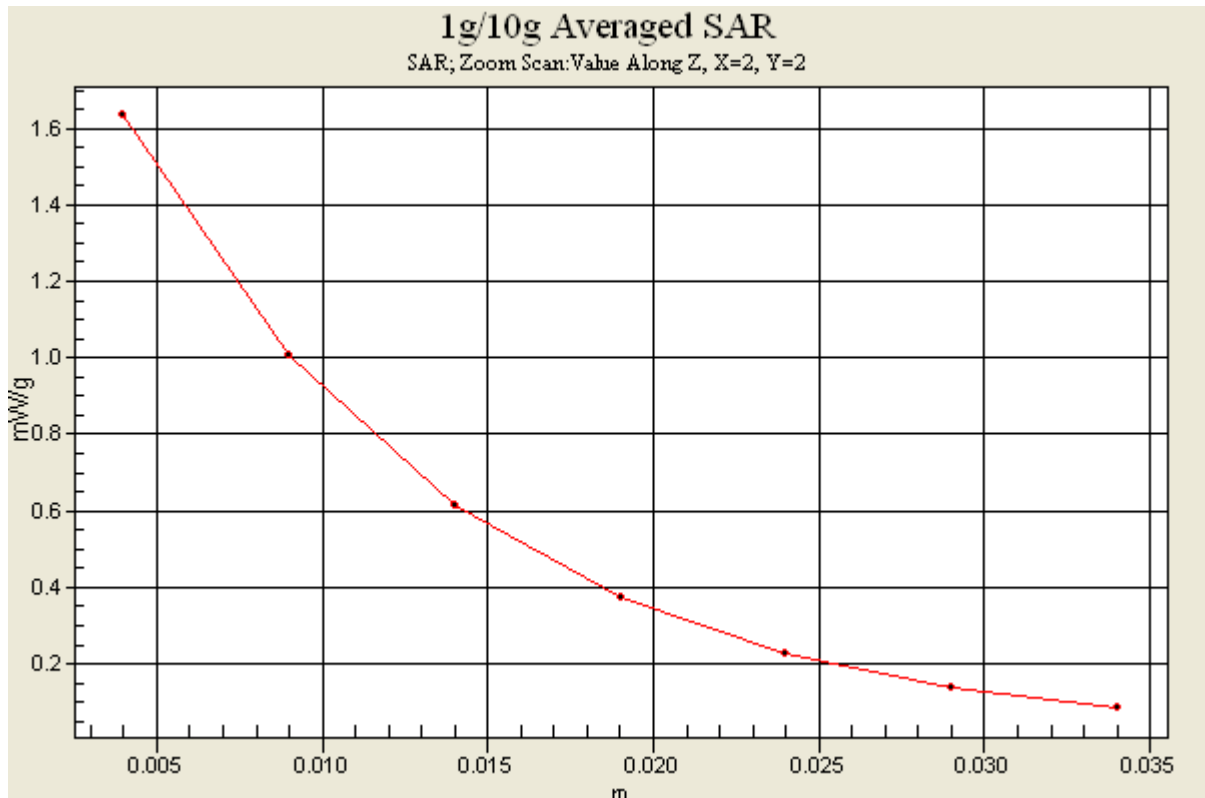
grid: $dx=8$ mm, $dy=8$ mm, $dz=5$ mm

Reference Value = 31.4 V/m; Power Drift = -0.153 dB

Peak SAR (extrapolated) = 2.44 W/kg

SAR(1 g) = 1.45 mW/g

Maximum value of SAR (measured) = 1.63 mW/g



SAMSUNG FCC ID : A3LSGHD800 1900MHz GPRS1900 Body SAR

DUT: SGH-D800(Body); Serial: FC-139-A

Program Name: SGH-D800 GSM1900 Body (Job No. : FC-139)

Procedure Name: Body, Ch.661, Ant.Intenna, Bat.Standard with BT

Procedure Notes: Meas.Tissue Temp(celsius)-22.0; Test Date-10/Oct/2005 [OET Bulletin 65-Supplement C, July 2001]

Communication System: Body GPRS ; Frequency: 1880 MHz;Duty Cycle: 1:4.15

Medium parameters used: $f = 1880$ MHz; $\sigma = 1.53$ mho/m; $\epsilon_r = 52.6$; $\rho = 1000$ kg/m³

Phantom section: Flat Section

DASY4 Configuration:

- Probe: EX3DV4 - SN3537; ConvF(7.76, 7.76, 7.76); Calibrated: 2004-12-15

- Sensor-Surface: 4mm (Mechanical Surface Detection)

- Electronics: DAE3 Sn468; Calibrated: 2004-12-07

- Phantom: SAM 1800/1900 MHz; Type: SAM; Serial: TP-1247

- Measurement SW: DASY4, V4.6 Build 19; Postprocessing SW: SEMCAD, V1.8 Build 159

Body, Ch.661, Ant.Intenna, Bat.Standard with BT/Zoom Scan (5x5x7)/Cube 0:

Measurement grid: dx=8mm, dy=8mm, dz=5mm

Reference Value = 30.8 V/m; Power Drift = -0.007 dB

Peak SAR (extrapolated) = 2.43 W/kg

SAR(1 g) = 1.44 mW/g

Maximum value of SAR (measured) = 1.63 mW/g

Body, Ch.661, Ant.Intenna, Bat.Standard with BT/Area Scan (51x71x1): Measurement grid: dx=20mm, dy=20mm

Maximum value of SAR (interpolated) = 1.53 mW/g

