

SAMSUNG FCC ID : A3LSGHD520 1900MHz GSM1900 Head SAR

DUT: SGH-D520(Up); Serial: FC-171-B

Program Name: SGH-D520 GSM1900 Right (Slide.Up, Job No. : FC-171)

Procedure Name: Cheek/Touch, Ch.512, Ant.Intenna, Bat.Standard

Procedure Notes: Meas.Tissue Temp(celsius)-21.6; Ambient Temp-21.9 Test Date-29/Dec/2005 [OET Bulletin 65-Supplement C, July 2001]

Communication System: GSM 1900; Frequency: 1850.2 MHz;Duty Cycle: 1:8.3

Medium parameters used: $f = 1850.2$ MHz; $\sigma = 1.39$ mho/m; $\epsilon_r = 40.2$; $\rho = 1000$ kg/m³

Phantom section: Right Section

DASY4 Configuration:

- Probe: ES3DV2 - SN3017; ConvF(5.02, 5.02, 5.02); Calibrated: 2005-09-20
- Sensor-Surface: 4mm (Mechanical Surface Detection)
- Electronics: DAE3 Sn486; Calibrated: 2005-08-30
- Phantom: SAM PHANTOM #2; Type: SAM; Serial: TP-1248
- Measurement SW: DASY4, V4.6 Build 23; Postprocessing SW: SEMCAD, V1.8 Build 160

Cheek/Touch, Ch.512, Ant.Intenna, Bat.Standard/Zoom Scan (5x5x7)/Cube 0:

Measurement grid: dx=8mm, dy=8mm, dz=5mm

Reference Value = 6.27 V/m; Power Drift = -0.042 dB

Peak SAR (extrapolated) = 0.516 W/kg

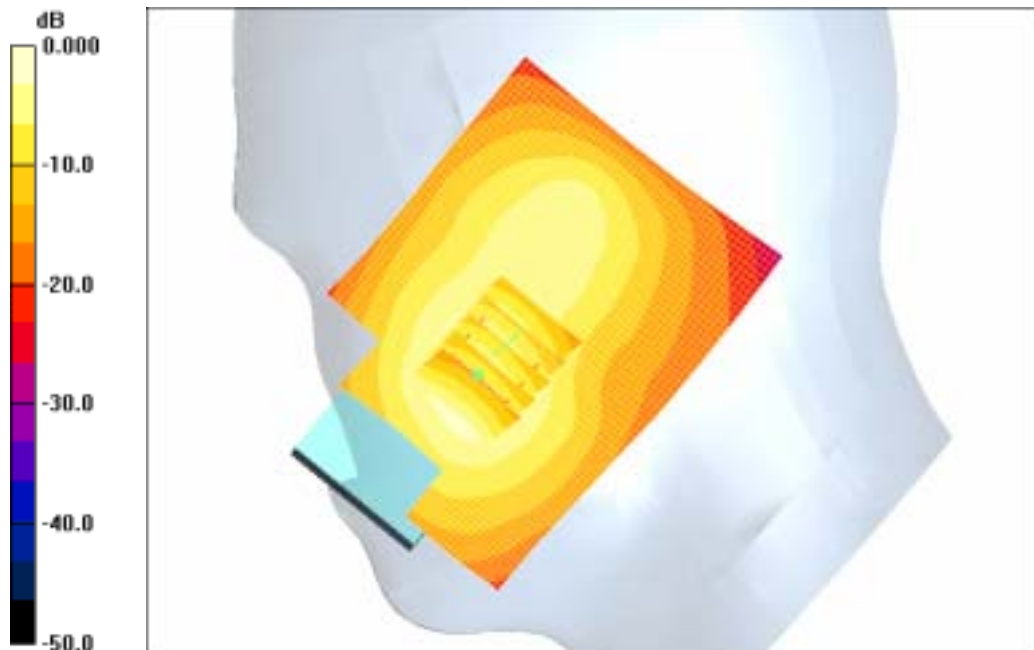
SAR(1 g) = 0.352 mW/g

Maximum value of SAR (measured) = 0.380 mW/g

Cheek/Touch, Ch.512, Ant.Intenna, Bat.Standard/Area Scan (51x71x1): Measurement

grid: dx=20mm, dy=20mm

Maximum value of SAR (interpolated) = 0.378 mW/g



0 dB = 0.378mW/g

SAMSUNG FCC ID : A3LSGHD520 1900MHz GSM1900 Head SAR

DUT: SGH-D520(Up); Serial: FC-171-B

Program Name: SGH-D520 GSM1900 Right (Slide.Up, Job No. : FC-171)

Procedure Name: Ear/Tilt, Ch.661, Ant.Intenna, Bat.Standard

Procedure Notes: Meas.Tissue Temp(celsius)-21.6; Ambient Temp-21.9 Test Date-29/Dec/2005 [OET Bulletin 65-Supplement C, July 2001]

Communication System: GSM 1900; Frequency: 1880 MHz;Duty Cycle: 1:8.3

Medium parameters used: $f = 1880$ MHz; $\sigma = 1.39$ mho/m; $\epsilon_r = 40.2$; $\rho = 1000$ kg/m³

Phantom section: Right Section

DASY4 Configuration:

- Probe: ES3DV2 - SN3017; ConvF(5.02, 5.02, 5.02); Calibrated: 2005-09-20
- Sensor-Surface: 4mm (Mechanical Surface Detection)
- Electronics: DAE3 Sn486; Calibrated: 2005-08-30
- Phantom: SAM PHANTOM #2; Type: SAM; Serial: TP-1248
- Measurement SW: DASY4, V4.6 Build 23; Postprocessing SW: SEMCAD, V1.8 Build 160

Ear/Tilt, Ch.661, Ant.Intenna, Bat.Standard/Area Scan (51x71x1): Measurement grid: dx=20mm, dy=20mm

Maximum value of SAR (interpolated) = 0.170 mW/g

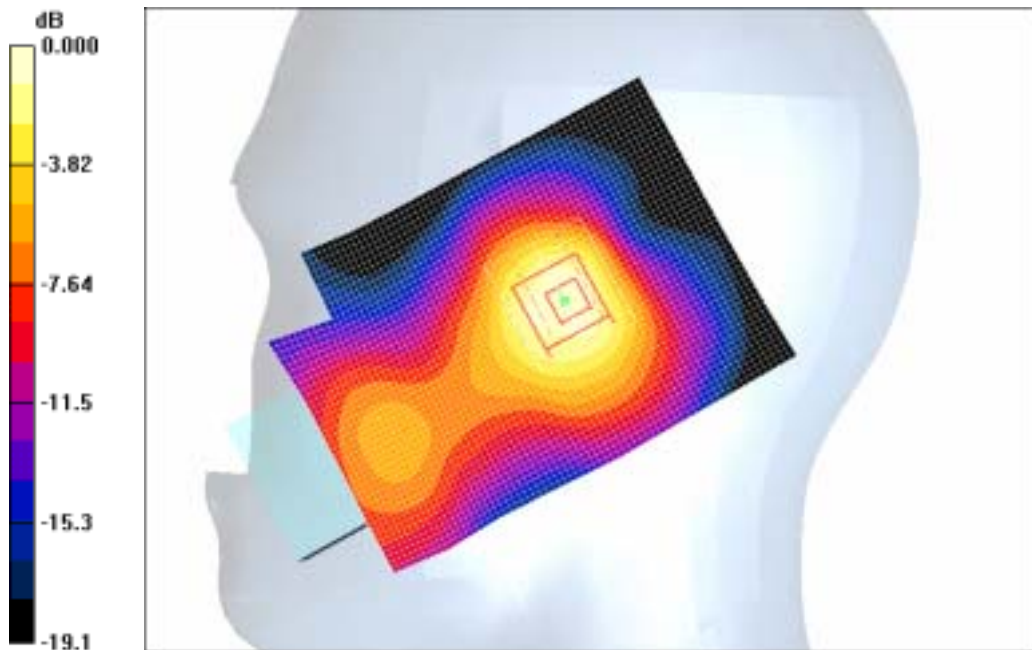
Ear/Tilt, Ch.661, Ant.Intenna, Bat.Standard/Zoom Scan (5x5x7)/Cube 0: Measurement grid: dx=8mm, dy=8mm, dz=5mm

Reference Value = 8.37 V/m; Power Drift = 0.060 dB

Peak SAR (extrapolated) = 0.208 W/kg

SAR(1 g) = 0.136 mW/g

Maximum value of SAR (measured) = 0.149 mW/g



0 dB = 0.149mW/g

SAMSUNG FCC ID : A3LSGHD520 1900MHz GSM1900 Head SAR

DUT: SGH-D520(Up); Serial: FC-171-B

Program Name: SGH-D520 GSM1900 Left (Slide.Up, Job No. : FC-171)

Procedure Name: Cheek/Touch, Ch.512, Ant.Intenna, Bat.Standard

Procedure Notes: Meas.Tissue Temp(celsius)-21.6; Ambient Temp-21.9 Test Date-29/Dec/2005 [OET Bulletin 65-Supplement C, July 2001]

Communication System: GSM 1900; Frequency: 1850.2 MHz;Duty Cycle: 1:8.3

Medium parameters used: $f = 1850.2$ MHz; $\sigma = 1.39$ mho/m; $\epsilon_r = 40.2$; $\rho = 1000$ kg/m³

Phantom section: Left Section

DASY4 Configuration:

- Probe: ES3DV2 - SN3017; ConvF(5.02, 5.02, 5.02); Calibrated: 2005-09-20
- Sensor-Surface: 4mm (Mechanical Surface Detection)
- Electronics: DAE3 Sn486; Calibrated: 2005-08-30
- Phantom: SAM PHANTOM #2; Type: SAM; Serial: TP-1248
- Measurement SW: DASY4, V4.6 Build 23; Postprocessing SW: SEMCAD, V1.8 Build 160

Cheek/Touch, Ch.512, Ant.Intenna, Bat.Standard/Zoom Scan (5x5x7)/Cube 0:

Measurement grid: dx=8mm, dy=8mm, dz=5mm

Reference Value = 5.89 V/m; Power Drift = 0.012 dB

Peak SAR (extrapolated) = 0.515 W/kg

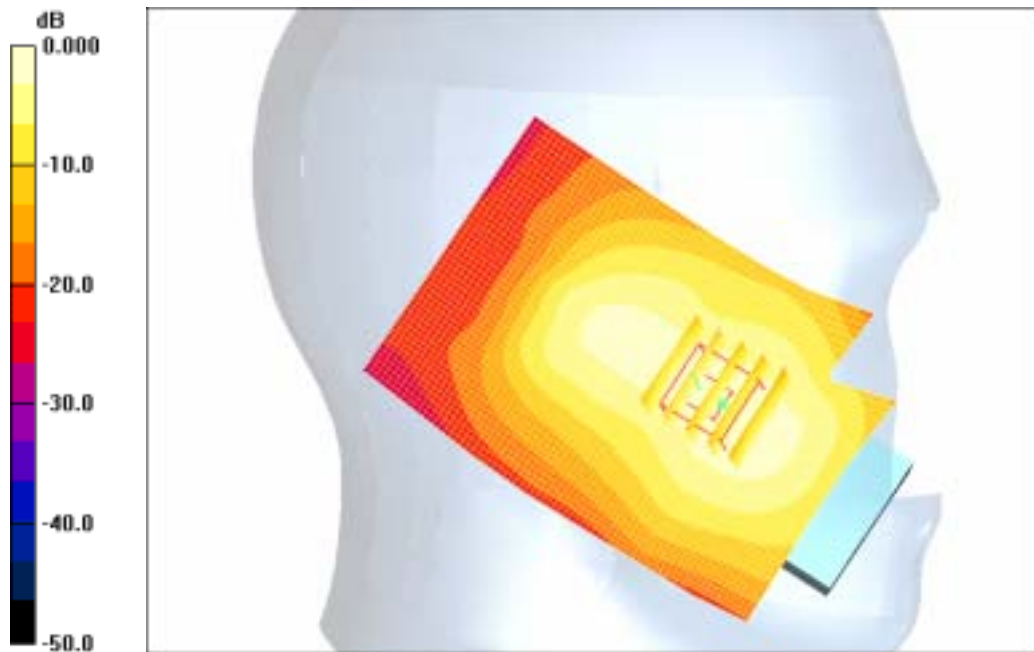
SAR(1 g) = 0.353 mW/g

Maximum value of SAR (measured) = 0.389 mW/g

Cheek/Touch, Ch.512, Ant.Intenna, Bat.Standard/Area Scan (51x71x1): Measurement

grid: dx=20mm, dy=20mm

Maximum value of SAR (interpolated) = 0.380 mW/g



0 dB = 0.380mW/g

SAMSUNG FCC ID : A3LSGHD520 1900MHz GSM1900 Head SAR

DUT: SGH-D520(Up); Serial: FC-171-B

Program Name: SGH-D520 GSM1900 Left (Slide.Up, Job No. : FC-171)

Procedure Name: Ear/Tilt, Ch.661, Ant.Intenna, Bat.Standard

Procedure Notes: Meas.Tissue Temp(celsius)-21.6; Ambient Temp-21.9 Test Date-29/Dec/2005 [OET Bulletin 65-Supplement C, July 2001]

Communication System: GSM 1900; Frequency: 1880 MHz;Duty Cycle: 1:8.3

Medium parameters used: $f = 1880$ MHz; $\sigma = 1.39$ mho/m; $\epsilon_r = 40.2$; $\rho = 1000$ kg/m³

Phantom section: Left Section

DASY4 Configuration:

- Probe: ES3DV2 - SN3017; ConvF(5.02, 5.02, 5.02); Calibrated: 2005-09-20
- Sensor-Surface: 4mm (Mechanical Surface Detection)
- Electronics: DAE3 Sn486; Calibrated: 2005-08-30
- Phantom: SAM PHANTOM #2; Type: SAM; Serial: TP-1248
- Measurement SW: DASY4, V4.6 Build 23; Postprocessing SW: SEMCAD, V1.8 Build 160

Ear/Tilt, Ch.661, Ant.Intenna, Bat.Standard/Zoom Scan (5x5x7)/Cube 0: Measurement grid: dx=8mm, dy=8mm, dz=5mm

Reference Value = 8.56 V/m; Power Drift = -0.043 dB

Peak SAR (extrapolated) = 0.263 W/kg

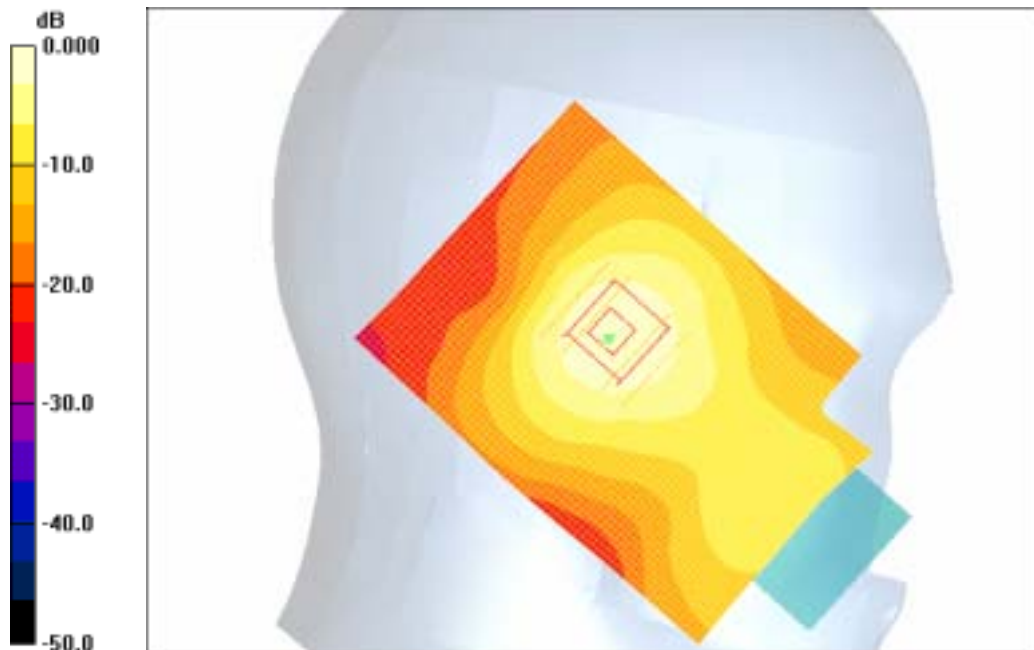
SAR(1 g) = 0.180 mW/g

Maximum value of SAR (measured) = 0.193 mW/g

Ear/Tilt, Ch.661, Ant.Intenna, Bat.Standard/Area Scan (51x71x1): Measurement grid:

dx=20mm, dy=20mm

Maximum value of SAR (interpolated) = 0.213 mW/g



0 dB = 0.213mW/g

SAMSUNG FCC ID : A3LSGHD520 1900MHz GSM1900 Head SAR

DUT: SGH-D520(Up); Serial: FC-171-B

Program Name: SGH-D520 GSM1900 Left (Slide.Up, Job No. : FC-171)

Procedure Name: Cheek/Touch, Ch.512, Ant.Intenna, Bat.Standard With BT ON

Procedure Notes: Meas.Tissue Temp(celsius)-21.6; Ambient Temp-21.9 Test Date-29/Dec/2005 [OET Bulletin 65-Supplement C, July 2001]

Communication System: GSM 1900; Frequency: 1850.2 MHz;Duty Cycle: 1:8.3

Medium parameters used: $f = 1850.2$ MHz; $\sigma = 1.39$ mho/m; $\epsilon_r = 40.2$; $\rho = 1000$ kg/m³

Phantom section: Left Section

DASY4 Configuration:

- Probe: ES3DV2 - SN3017; ConvF(5.02, 5.02, 5.02); Calibrated: 2005-09-20
- Sensor-Surface: 4mm (Mechanical Surface Detection)
- Electronics: DAE3 Sn486; Calibrated: 2005-08-30
- Phantom: SAM PHANTOM #2; Type: SAM; Serial: TP-1248
- Measurement SW: DASY4, V4.6 Build 23; Postprocessing SW: SEMCAD, V1.8 Build 160

Cheek/Touch, Ch.512, Ant.Intenna, Bat.Standard With BT ON/Area Scan (51x71x1):

Measurement grid: dx=20mm, dy=20mm

Maximum value of SAR (interpolated) = 0.384 mW/g

Cheek/Touch, Ch.512, Ant.Intenna, Bat.Standard With BT ON/Zoom Scan (5x5x7)/Cube

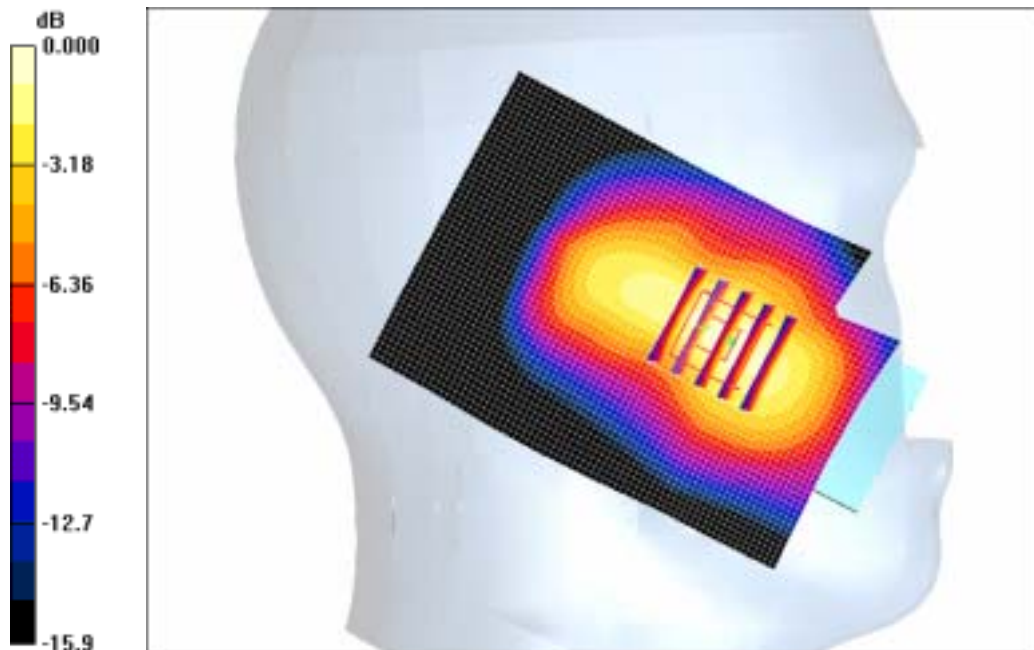
0: Measurement grid: dx=8mm, dy=8mm, dz=5mm

Reference Value = 6.06 V/m; Power Drift = 0.116 dB

Peak SAR (extrapolated) = 0.509 W/kg

SAR(1 g) = 0.350 mW/g

Maximum value of SAR (measured) = 0.383 mW/g



0 dB = 0.383mW/g

SAMSUNG FCC ID : A3LSGHD520 1900MHz GSM1900 Head SAR

DUT: SGH-D520(Down); Serial: FC-171-B

Program Name: SGH-D520 GSM1900 Body (Job No. : FC-171)

Procedure Name: Body, Ch.810, Ant.Intenna, Bat.Standard

Procedure Notes: Meas.Tissue Temp(celsius)-21.4; Ambient Temp-22.1 Test Date-29/Dec/2005 [OET Bulletin 65-Supplement C, July 2001]

Communication System: Body GPRS ; Frequency: 1909.8 MHz;Duty Cycle: 1:4.15

Medium parameters used: $f = 1909.8$ MHz; $\sigma = 1.5$ mho/m; $\epsilon_r = 51.9$; $\rho = 1000$ kg/m³

Phantom section: Flat Section

DASY4 Configuration:

- Probe: ES3DV2 - SN3017; ConvF(4.47, 4.47, 4.47); Calibrated: 2005-09-20
- Sensor-Surface: 4mm (Mechanical Surface Detection)
- Electronics: DAE3 Sn486; Calibrated: 2005-08-30
- Phantom: SAM PHANTOM #1; Type: SAM; Serial: TP-1247
- Measurement SW: DASY4, V4.6 Build 23; Postprocessing SW: SEMCAD, V1.8 Build 160

Body, Ch.810, Ant.Intenna, Bat.Standard/Area Scan (51x71x1): Measurement grid:

dx=20mm, dy=20mm

Maximum value of SAR (interpolated) = 0.422 mW/g

Body, Ch.810, Ant.Intenna, Bat.Standard/Zoom Scan (6x6x7)/Cube 0: Measurement grid:

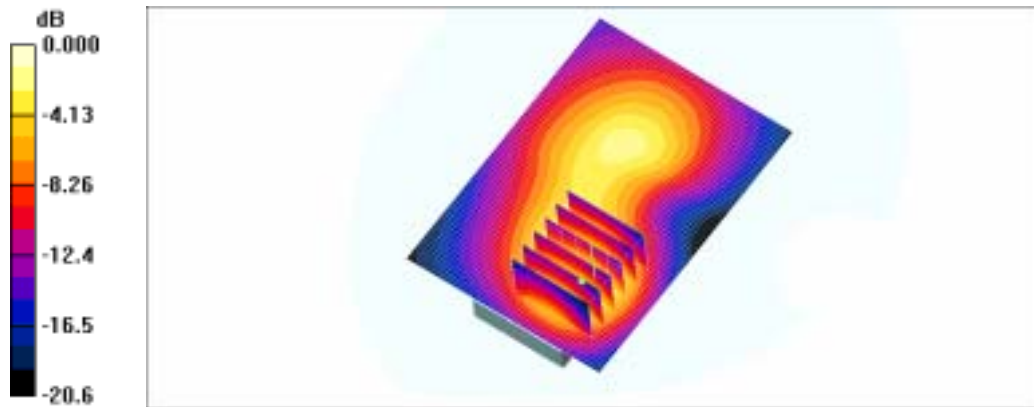
dx=8mm, dy=8mm, dz=5mm

Reference Value = 12.4 V/m; Power Drift = 0.043 dB

Peak SAR (extrapolated) = 0.633 W/kg

SAR(1 g) = 0.379 mW/g

Maximum value of SAR (measured) = 0.402 mW/g



0 dB = 0.402mW/g

SAMSUNG FCC ID : A3LSGHD520 1900MHz GSM1900 Head SAR

DUT: SGH-D520(Down); Serial: FC-171-B

Program Name: SGH-D520 GSM1900 Body (Job No. : FC-171)

Procedure Name: Body, Ch.810, Ant.Intenna, Bat.Standard with BT ON

Procedure Notes: Meas.Tissue Temp(celsius)-21.4; Ambient Temp-22.1 Test Date-29/Dec/2005 [OET Bulletin 65-Supplement C, July 2001]

Communication System: Body GPRS ; Frequency: 1909.8 MHz;Duty Cycle: 1:4.15

Medium parameters used: $f = 1909.8$ MHz; $\sigma = 1.5$ mho/m; $\epsilon_r = 51.9$; $\rho = 1000$ kg/m³

Phantom section: Flat Section

DASY4 Configuration:

- Probe: ES3DV2 - SN3017; ConvF(4.47, 4.47, 4.47); Calibrated: 2005-09-20
- Sensor-Surface: 4mm (Mechanical Surface Detection)
- Electronics: DAE3 Sn486; Calibrated: 2005-08-30
- Phantom: SAM PHANTOM #1; Type: SAM; Serial: TP-1247
- Measurement SW: DASY4, V4.6 Build 23; Postprocessing SW: SEMCAD, V1.8 Build 160

Body, Ch.810, Ant.Intenna, Bat.Standard with BT ON/Area Scan (51x71x1):

Measurement grid: dx=20mm, dy=20mm

Maximum value of SAR (interpolated) = 0.451 mW/g

Body, Ch.810, Ant.Intenna, Bat.Standard with BT ON/Zoom Scan (5x5x7)/Cube 0:

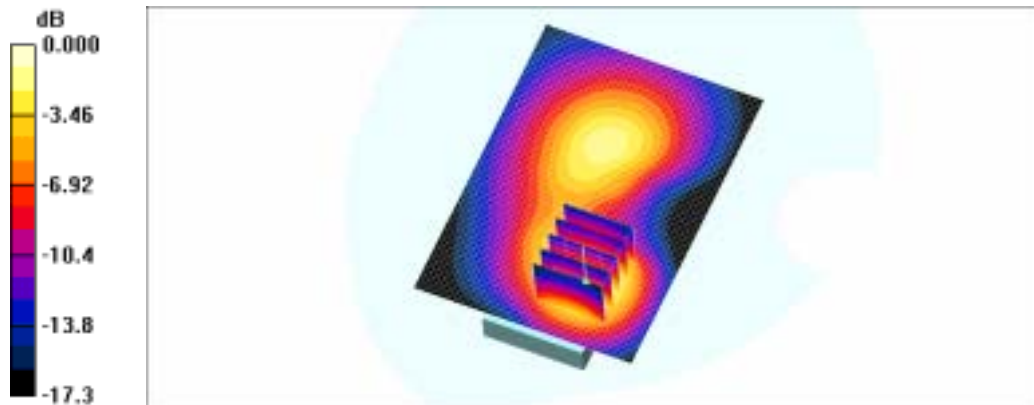
Measurement grid: dx=8mm, dy=8mm, dz=5mm

Reference Value = 13.4 V/m; Power Drift = 0.006 dB

Peak SAR (extrapolated) = 0.635 W/kg

SAR(1 g) = 0.379 mW/g

Maximum value of SAR (measured) = 0.414 mW/g



0 dB = 0.414mW/g

SAMSUNG FCC ID : A3LSGHD520 1900MHz GSM1900 Head SAR

DUT: SGH-D520(Up); Serial: FC-171-B

Program Name: SGH-D520 GSM1900 Left (Slide.Up, Job No. : FC-171)

Procedure Name: Cheek/Touch, Ch.512, Ant.Intenna, Bat.Standard

Procedure Notes: Meas.Tissue Temp(celsius)-21.6; Ambient Temp-21.9 Test Date-29/Dec/2005 [OET Bulletin 65-Supplement C, July 2001]

Communication System: GSM 1900; Frequency: 1850.2 MHz;Duty Cycle: 1:8.3

Medium parameters used: $f = 1850.2$ MHz; $\sigma = 1.39$ mho/m; $\epsilon_r = 40.2$; $\rho = 1000$ kg/m³

Phantom section: Left Section

DASY4 Configuration:

- Probe: ES3DV2 - SN3017; ConvF(5.02, 5.02, 5.02); Calibrated: 2005-09-20
- Sensor-Surface: 4mm (Mechanical Surface Detection)
- Electronics: DAE3 Sn486; Calibrated: 2005-08-30
- Phantom: SAM PHANTOM #2; Type: SAM; Serial: TP-1248
- Measurement SW: DASY4, V4.6 Build 23; Postprocessing SW: SEMCAD, V1.8 Build 160

Cheek/Touch, Ch.512, Ant.Intenna, Bat.Standard/Zoom Scan (5x5x7)/Cube 0:

Measurement grid: dx=8mm, dy=8mm, dz=5mm

Reference Value = 5.89 V/m; Power Drift = 0.012 dB

Peak SAR (extrapolated) = 0.515 W/kg

SAR(1 g) = 0.353 mW/g

Maximum value of SAR (measured) = 0.389 mW/g

Cheek/Touch, Ch.512, Ant.Intenna, Bat.Standard/Area Scan (51x71x1): Measurement

grid: dx=20mm, dy=20mm

Maximum value of SAR (interpolated) = 0.380 mW/g



SAMSUNG FCC ID : A3LSGHD520 1900MHz GSM1900 Head SAR

DUT: SGH-D520(Up); Serial: FC-171-B

Program Name: SGH-D520 GSM1900 Left (Slide.Up, Job No. : FC-171)

Procedure Name: Cheek/Touch, Ch.512, Ant.Intenna, Bat.Standard With BT ON

Procedure Notes: Meas.Tissue Temp(celsius)-21.6; Ambient Temp-21.9 Test Date-29/Dec/2005 [OET Bulletin 65-Supplement C, July 2001]

Communication System: GSM 1900; Frequency: 1850.2 MHz;Duty Cycle: 1:8.3

Medium parameters used: $f = 1850.2$ MHz; $\sigma = 1.39$ mho/m; $\epsilon_r = 40.2$; $\rho = 1000$ kg/m³

Phantom section: Left Section

DASY4 Configuration:

- Probe: ES3DV2 - SN3017; ConvF(5.02, 5.02, 5.02); Calibrated: 2005-09-20
- Sensor-Surface: 4mm (Mechanical Surface Detection)
- Electronics: DAE3 Sn486; Calibrated: 2005-08-30
- Phantom: SAM PHANTOM #2; Type: SAM; Serial: TP-1248
- Measurement SW: DASY4, V4.6 Build 23; Postprocessing SW: SEMCAD, V1.8 Build 160

Cheek/Touch, Ch.512, Ant.Intenna, Bat.Standard With BT ON/Area Scan (51x71x1):

Measurement grid: dx=20mm, dy=20mm

Maximum value of SAR (interpolated) = 0.384 mW/g

Cheek/Touch, Ch.512, Ant.Intenna, Bat.Standard With BT ON/Zoom Scan (5x5x7)/Cube

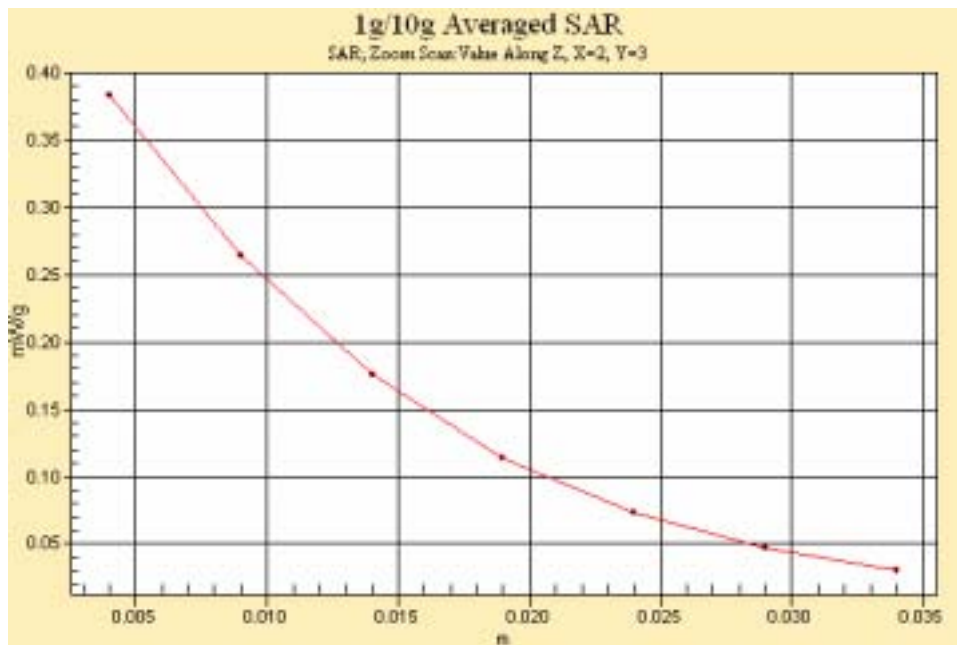
0: Measurement grid: dx=8mm, dy=8mm, dz=5mm

Reference Value = 6.06 V/m; Power Drift = 0.116 dB

Peak SAR (extrapolated) = 0.509 W/kg

SAR(1 g) = 0.350 mW/g

Maximum value of SAR (measured) = 0.383 mW/g



SAMSUNG FCC ID : A3LSGHD520 1900MHz GSM1900 Head SAR

DUT: SGH-D520(Down); Serial: FC-171-B

Program Name: SGH-D520 GSM1900 Body (Job No. : FC-171)

Procedure Name: Body, Ch.810, Ant.Intenna, Bat.Standard

Procedure Notes: Meas.Tissue Temp(celsius)-21.4; Ambient Temp-22.1 Test Date-29/Dec/2005 [OET Bulletin 65-Supplement C, July 2001]

Communication System: Body GPRS ; Frequency: 1909.8 MHz;Duty Cycle: 1:4.15

Medium parameters used: $f = 1909.8$ MHz; $\sigma = 1.5$ mho/m; $\epsilon_r = 51.9$; $\rho = 1000$ kg/m³

Phantom section: Flat Section

DASY4 Configuration:

- Probe: ES3DV2 - SN3017; ConvF(4.47, 4.47, 4.47); Calibrated: 2005-09-20
- Sensor-Surface: 4mm (Mechanical Surface Detection)
- Electronics: DAE3 Sn486; Calibrated: 2005-08-30
- Phantom: SAM PHANTOM #1; Type: SAM; Serial: TP-1247
- Measurement SW: DASY4, V4.6 Build 23; Postprocessing SW: SEMCAD, V1.8 Build 160

Body, Ch.810, Ant.Intenna, Bat.Standard/Area Scan (51x71x1): Measurement grid:

$dx=20$ mm, $dy=20$ mm

Maximum value of SAR (interpolated) = 0.422 mW/g

Body, Ch.810, Ant.Intenna, Bat.Standard/Zoom Scan (6x6x7)/Cube 0: Measurement grid:

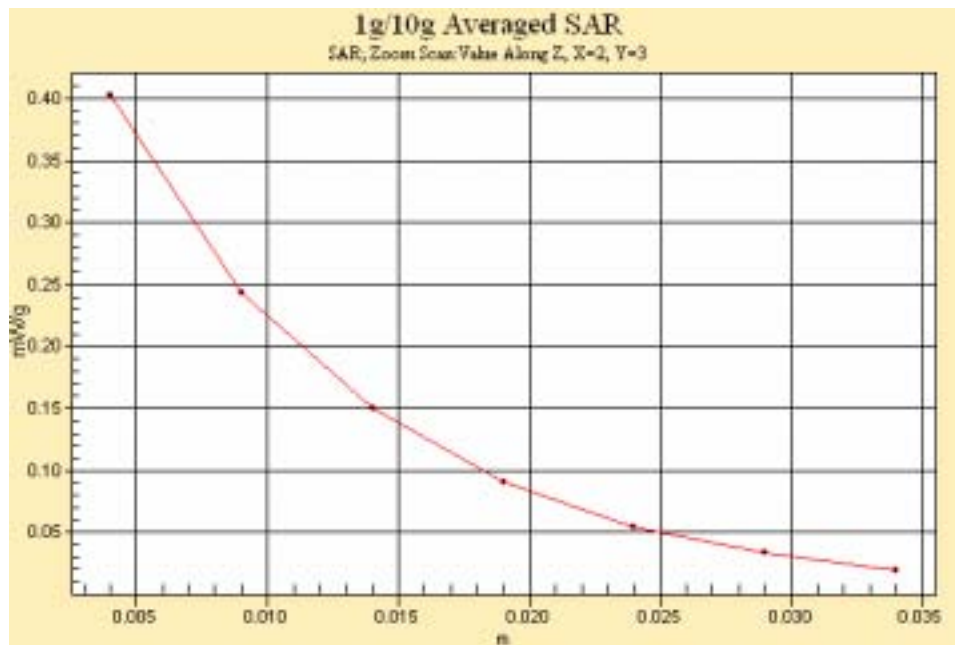
$dx=8$ mm, $dy=8$ mm, $dz=5$ mm

Reference Value = 12.4 V/m; Power Drift = 0.043 dB

Peak SAR (extrapolated) = 0.633 W/kg

SAR(1 g) = 0.379 mW/g

Maximum value of SAR (measured) = 0.402 mW/g



SAMSUNG FCC ID : A3LSGHD520 1900MHz GSM1900 Head SAR

DUT: SGH-D520(Down); Serial: FC-171-B

Program Name: SGH-D520 GSM1900 Body (Job No. : FC-171)

Procedure Name: Body, Ch.810, Ant.Intenna, Bat.Standard with BT ON

Procedure Notes: Meas.Tissue Temp(celsius)-21.4; Ambient Temp-22.1 Test Date-29/Dec/2005 [OET Bulletin 65-Supplement C, July 2001]

Communication System: Body GPRS ; Frequency: 1909.8 MHz;Duty Cycle: 1:4.15

Medium parameters used: $f = 1909.8$ MHz; $\sigma = 1.5$ mho/m; $\epsilon_r = 51.9$; $\rho = 1000$ kg/m³

Phantom section: Flat Section

DASY4 Configuration:

- Probe: ES3DV2 - SN3017; ConvF(4.47, 4.47, 4.47); Calibrated: 2005-09-20
- Sensor-Surface: 4mm (Mechanical Surface Detection)
- Electronics: DAE3 Sn486; Calibrated: 2005-08-30
- Phantom: SAM PHANTOM #1; Type: SAM; Serial: TP-1247
- Measurement SW: DASY4, V4.6 Build 23; Postprocessing SW: SEMCAD, V1.8 Build 160

Body, Ch.810, Ant.Intenna, Bat.Standard with BT ON/Area Scan (51x71x1):

Measurement grid: dx=20mm, dy=20mm

Maximum value of SAR (interpolated) = 0.451 mW/g

Body, Ch.810, Ant.Intenna, Bat.Standard with BT ON/Zoom Scan (5x5x7)/Cube 0:

Measurement grid: dx=8mm, dy=8mm, dz=5mm

Reference Value = 13.4 V/m; Power Drift = 0.006 dB

Peak SAR (extrapolated) = 0.635 W/kg

SAR(1 g) = 0.379 mW/g

Maximum value of SAR (measured) = 0.414 mW/g

