

835MHz Dipole Validation

DUT: Dipole 835 MHz; Serial: 4d014

Program Name: 835MHz Dipole Validation 2006.01.16

Procedure Name: 835MHz @ 250mW dipole SN:4d014

Procedure Notes:

Communication System: CW; Frequency: 835 MHz; Duty Cycle: 1:1

Medium parameters used: $f = 835 \text{ MHz}$; $\sigma = 0.91 \text{ mho/m}$; $\epsilon_r = 40.9$; $\rho = 1000 \text{ kg/m}^3$

Phantom section: Flat Section

DASY4 Configuration:

- Probe: ES3DV3 - SN3080; ConvF(5.75, 5.75, 5.75); Calibrated: 2005-05-26
- Sensor - Surface: 4mm (Mechanical Surface Detection)
- Electronics: DAE4 Sn533; Calibrated: 2005-11-21
- Phantom: PHANTOM #1; Type: SAM; Serial: TP-1143
- Measurement SW: DASY4, V4.6 Build 23; Postprocessing SW: SEMCAD, V1.8 Build 160

835MHz @ 250mW dipole SN:4d014/Area Scan (51x51x1): Measurement grid:

$dx=20\text{mm}$, $dy=20\text{mm}$

Maximum value of SAR (interpolated) = 2.62 mW/g

835MHz @ 250mW dipole SN:4d014/Zoom Scan (5x5x7)/Cube 0: Measurement grid:

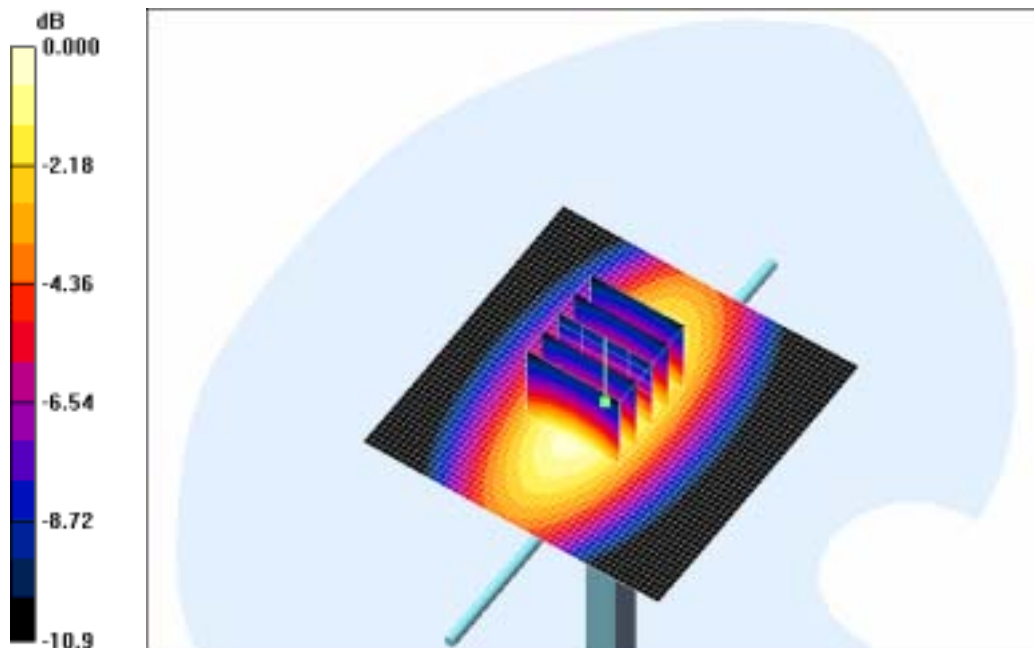
$dx=8\text{mm}$, $dy=8\text{mm}$, $dz=5\text{mm}$

Reference Value = 53.7 V/m; Power Drift = -0.006 dB

Peak SAR (extrapolated) = 3.65 W/kg

SAR(1 g) = 2.4 mW/g

Maximum value of SAR (measured) = 2.59 mW/g



0 dB = 2.59mW/g

1900MHz Dipole Validation

DUT: Dipole 1900 MHz; Serial: 5d023

Program Name: 1900MHz Dipole Validation 2006.01.17

Procedure Name: 1900MHz @ 250mW

Procedure Notes:

Communication System: CW; Frequency: 1900 MHz; Duty Cycle: 1:1

Medium parameters used: $f = 1900$ MHz; $\sigma = 1.41$ mho/m; $\epsilon_r = 39.6$; $\rho = 1000$ kg/m³

Phantom section: Flat Section

DASY4 Configuration:

- Probe: ES3DV3 - SN3080; ConvF(4.92, 4.92, 4.92); Calibrated: 2005-05-26
- Sensor - Surface: 4mm (Mechanical Surface Detection)
- Electronics: DAE4 Sn533; Calibrated: 2005-11-21
- Phantom: PHANTOM #1; Type: SAM; Serial: TP-1143
- Measurement SW: DASY4, V4.6 Build 23; Postprocessing SW: SEMCAD, V1.8 Build 160

1900MHz @ 250mW/Area Scan (51x51x1): Measurement grid: dx=20mm, dy=20mm

Maximum value of SAR (interpolated) = 16.0 mW/g

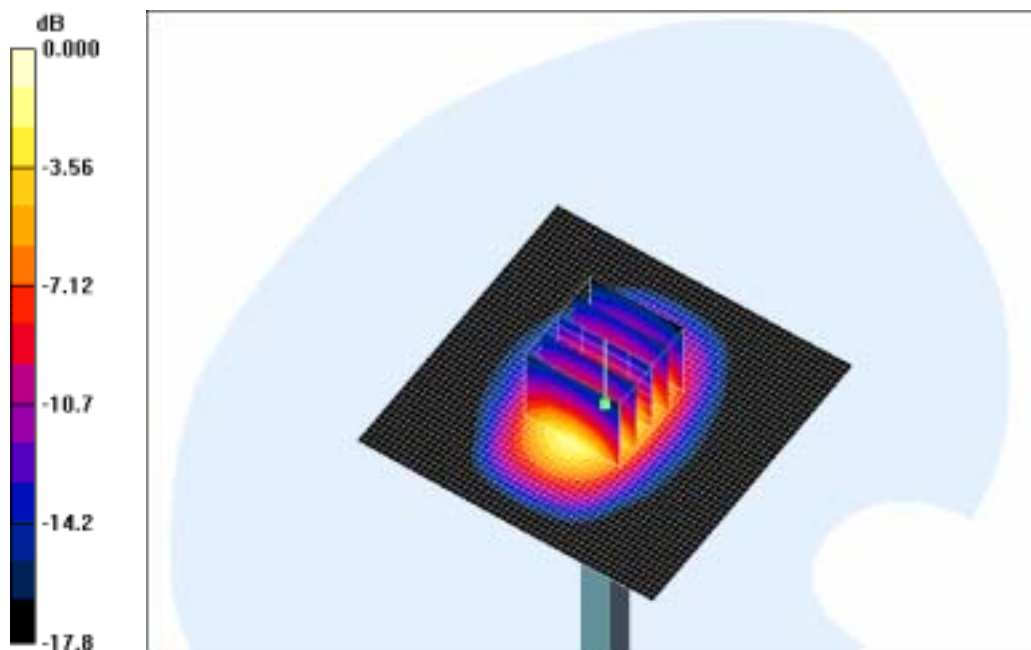
1900MHz @ 250mW/Zoom Scan (5x5x7)/Cube 0: Measurement grid: dx=8mm, dy=8mm, dz=5mm

Reference Value = 92.1 V/m; Power Drift = -0.042 dB

Peak SAR (extrapolated) = 18.2 W/kg

SAR(1 g) = 10.1 mW/g

Maximum value of SAR (measured) = 11.3 mW/g



0 dB = 11.3mW/g