

DUT: Dipole 835 MHz; Serial: 451
Program Name: 835MHz Dipole Validation 2007.02.22
Procedure Name: 835MHz @ 250mW

Communication System: CW; Frequency: 835 MHz; Duty Cycle: 1:1
Medium parameters used: $f = 835$ MHz; $\sigma = 0.91$ mho/m; $\epsilon_r = 41.2$; $\rho = 1000$ kg/m³
Phantom section: Flat Section

DASY4 Configuration:

- Probe: ES3DV2 - SN3017; ConvF(6.3, 6.3, 6.3); Calibrated: 2006-09-20
- Sensor-Surface: 4mm (Mechanical Surface Detection)
- Electronics: DAE4 Sn533; Calibrated: 2006-11-16
- Phantom: PHANTOM #1; Type: SAM; Serial: TP-1143
- Measurement SW: DASY4, V4.7 Build 53; Postprocessing SW: SEMCAD, V1.8 Build 172

835MHz @ 250mW/Zoom Scan (5x5x7)/Cube 0: Measurement grid: dx=8mm, dy=8mm, dz=5mm

Reference Value = 54.0 V/m; Power Drift = -0.022 dB

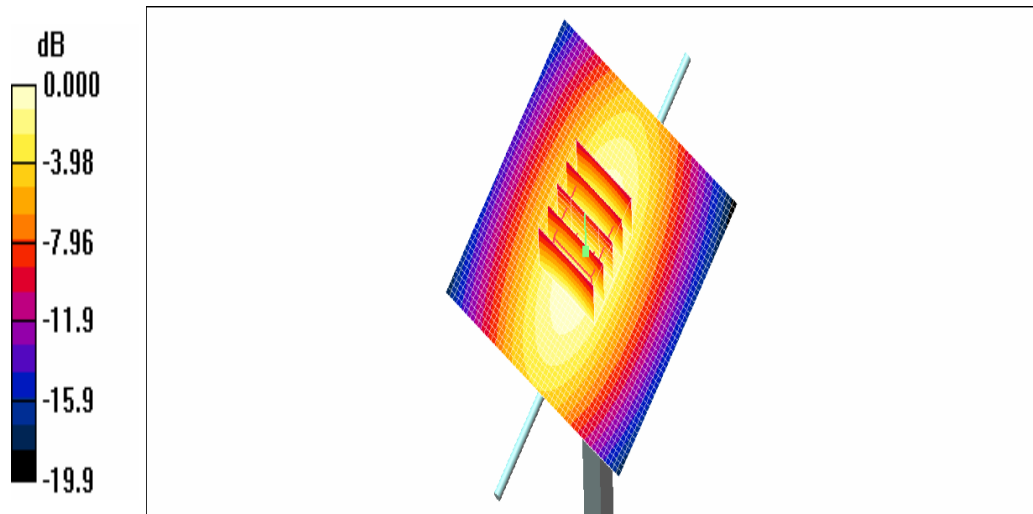
Peak SAR (extrapolated) = 3.62 W/kg

SAR(1 g) = 2.43 mW/g

Maximum value of SAR (measured) = 2.63 mW/g

835MHz @ 250mW/Area Scan (51x51x1): Measurement grid: dx=20mm, dy=20mm

Maximum value of SAR (interpolated) = 2.66 mW/g



0 dB = 2.66mW/g

DUT: Dipole 1900 MHz; Serial: 548
Program Name: 1900MHz Dipole Validation 2007.02.23
Procedure Name: 1900MHz @ 250mW

Communication System: CW; Frequency: 1900 MHz; Duty Cycle: 1:1
Medium parameters used: $f = 1900$ MHz; $\sigma = 1.41$ mho/m; $\epsilon_r = 39.9$; $\rho = 1000$ kg/m³
Phantom section: Flat Section

DASY4 Configuration:

- Probe: ES3DV2 - SN3017; ConvF(5.06, 5.06, 5.06); Calibrated: 2006-09-20
- Sensor-Surface: 4mm (Mechanical Surface Detection)
- Electronics: DAE4 Sn533; Calibrated: 2006-11-16
- Phantom: PHANTOM #1; Type: SAM; Serial: TP-1143
- Measurement SW: DASY4, V4.7 Build 53; Postprocessing SW: SEMCAD, V1.8 Build 172

1900MHz @ 250mW/Area Scan (51x51x1): Measurement grid: dx=20mm, dy=20mm
Maximum value of SAR (interpolated) = 16.5 mW/g

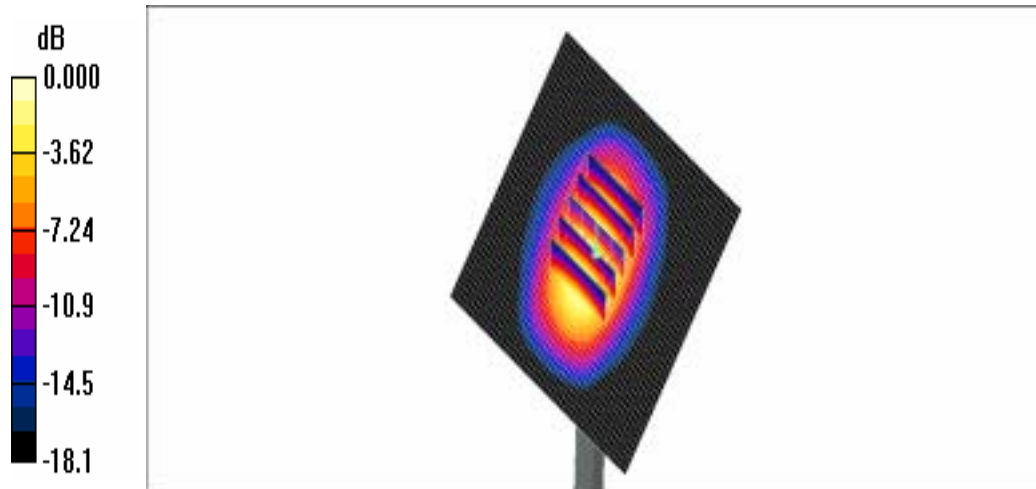
1900MHz @ 250mW/Zoom Scan (5x5x7)/Cube 0: Measurement grid: dx=8mm, dy=8mm, dz=5mm

Reference Value = 89.9 V/m; Power Drift = -0.014 dB

Peak SAR (extrapolated) = 18.8 W/kg

SAR(1 g) = 10.1 mW/g

Maximum value of SAR (measured) = 11.3 mW/g



0 dB = 11.3mW/g