

SAMSUNG FCC ID : A3LSGHC417 835MHz GSM850 Head SAR

DUT: SGH-C417; Serial: FD-076-Y

Program Name: SGH-C417 GSM850 Right(Job No. : FD-076)

Procedure Name: Cheek/Touch, Ch.251, Ant.Fixed, Bat.Standard with BT ON

Procedure Notes: Meas.Tissue Temp(celsius)-21.7, Ambient Temp-22.3 Test Date-14/Jul/2006[OET Bulletin 65-Supplement C, July 2001]

Communication System: GSM850; Frequency: 848.8 MHz;Duty Cycle: 1:8.3

Medium parameters used: $f = 848.8$ MHz; $\sigma = 0.92$ mho/m; $\epsilon_r = 41.3$; $\rho = 1000$ kg/m³

Phantom section: Right Section

DASY4 Configuration:

- Probe: ES3DV3 - SN3080; ConvF(5.69, 5.69, 5.69); Calibrated: 2006-05-30
- Sensor-Surface: 4mm (Mechanical Surface Detection)
- Electronics: DAE4 Sn686; Calibrated: 2006-05-05
- Phantom: SAM PHANTOM #2; Type: SAM; Serial: TP-1248
- Measurement SW: DASY4, V4.7 Build 44; Postprocessing SW: SEMCAD, V1.8 Build 171

Cheek/Touch, Ch.251, Ant.Fixed, Bat.Standard with BT ON/Area Scan (51x71x1):

Measurement grid: dx=20mm, dy=20mm

Maximum value of SAR (interpolated) = 1.54 mW/g

Cheek/Touch, Ch.251, Ant.Fixed, Bat.Standard with BT ON/Zoom Scan (5x5x7)/Cube 0:

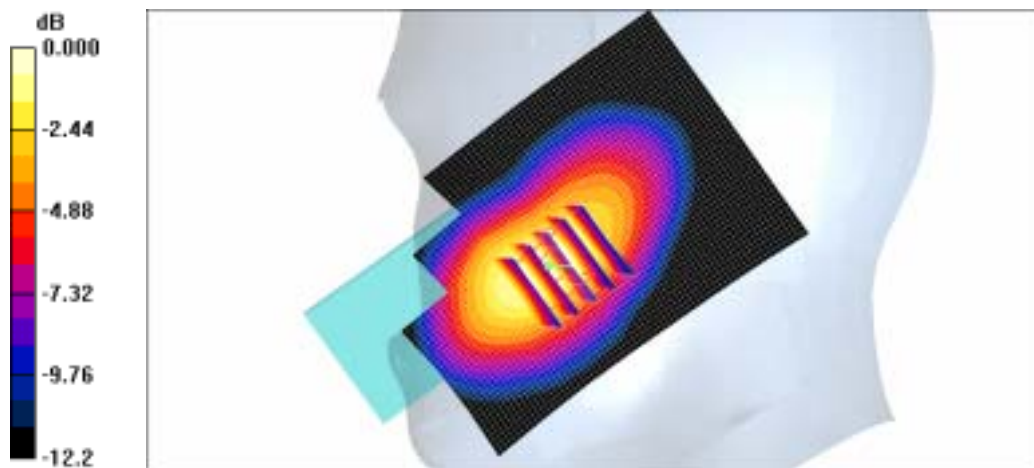
Measurement grid: dx=8mm, dy=8mm, dz=5mm

Reference Value = 10.5 V/m; Power Drift = 0.140 dB

Peak SAR (extrapolated) = 2.25 W/kg

SAR(1 g) = 1.51 mW/g

Maximum value of SAR (measured) = 1.62 mW/g



0 dB = 1.62mW/g

SAMSUNG FCC ID : A3LSGHC417 835MHz GSM850 Head SAR

DUT: SGH-C417; Serial: FD-076-Y

Program Name: SGH-C417 GSM850 Right(Job No. : FD-076)

Procedure Name: Ear/Tilt, Ch.190, Ant.Fixed, Bat.Standard

Procedure Notes: Meas.Tissue Temp(celsius)-21.7, Ambient Temp-22.3 Test Date-14/Jul/2006[OET Bulletin 65-Supplement C, July 2001]

Communication System: GSM850; Frequency: 836.6 MHz;Duty Cycle: 1:8.3

Medium parameters used: $f = 836.6$ MHz; $\sigma = 0.92$ mho/m; $\epsilon_r = 41.3$; $\rho = 1000$ kg/m³

Phantom section: Right Section

DASY4 Configuration:

- Probe: ES3DV3 - SN3080; ConvF(5.69, 5.69, 5.69); Calibrated: 2006-05-30
- Sensor-Surface: 4mm (Mechanical Surface Detection)
- Electronics: DAE4 Sn686; Calibrated: 2006-05-05
- Phantom: SAM PHANTOM #2; Type: SAM; Serial: TP-1248
- Measurement SW: DASY4, V4.7 Build 44; Postprocessing SW: SEMCAD, V1.8 Build 171

Ear/Tilt, Ch.190, Ant.Fixed, Bat.Standard/Zoom Scan (5x5x7)/Cube 0: Measurement grid: dx=8mm, dy=8mm, dz=5mm

Reference Value = 13.7 V/m; Power Drift = 0.012 dB

Peak SAR (extrapolated) = 0.443 W/kg

SAR(1 g) = 0.347 mW/g

Maximum value of SAR (measured) = 0.364 mW/g

Ear/Tilt, Ch.190, Ant.Fixed, Bat.Standard/Area Scan (51x71x1): Measurement grid:

dx=20mm, dy=20mm

Maximum value of SAR (interpolated) = 0.364 mW/g



0 dB = 0.364mW/g

SAMSUNG FCC ID : A3LSGHC417 835MHz GSM850 Head SAR

DUT: SGH-C417; Serial: FD-076-Y

Program Name: SGH-C417 GSM850 Left(Job No. : FD-076)

Procedure Name: Cheek/Touch, Ch.251, Ant.Fixed, Bat.Standard

Procedure Notes: Meas.Tissue Temp(celsius)-21.7, Ambient Temp-22.3 Test Date-14/Jul/2006[OET Bulletin 65-Supplement C, July 2001]

Communication System: GSM850; Frequency: 848.8 MHz;Duty Cycle: 1:8.3

Medium parameters used: $f = 848.8$ MHz; $\sigma = 0.92$ mho/m; $\epsilon_r = 41.3$; $\rho = 1000$ kg/m³

Phantom section: Left Section

DASY4 Configuration:

- Probe: ES3DV3 - SN3080; ConvF(5.69, 5.69, 5.69); Calibrated: 2006-05-30
- Sensor-Surface: 4mm (Mechanical Surface Detection)
- Electronics: DAE4 Sn686; Calibrated: 2006-05-05
- Phantom: SAM PHANTOM #2; Type: SAM; Serial: TP-1248
- Measurement SW: DASY4, V4.7 Build 44; Postprocessing SW: SEMCAD, V1.8 Build 171

Cheek/Touch, Ch.251, Ant.Fixed, Bat.Standard/Zoom Scan (5x5x7)/Cube 0:

Measurement grid: dx=8mm, dy=8mm, dz=5mm

Reference Value = 10.5 V/m; Power Drift = -0.011 dB

Peak SAR (extrapolated) = 2.02 W/kg

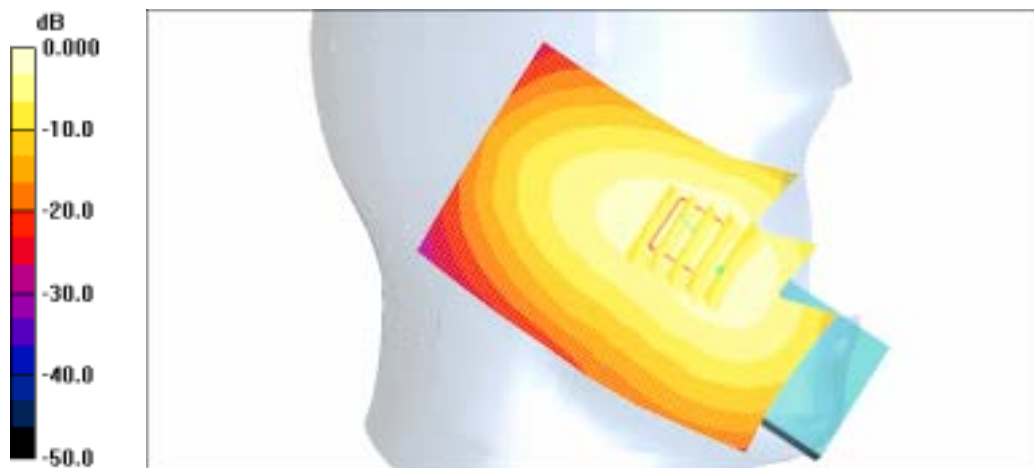
SAR(1 g) = 1.38 mW/g

Maximum value of SAR (measured) = 1.44 mW/g

Cheek/Touch, Ch.251, Ant.Fixed, Bat.Standard/Area Scan (51x71x1): Measurement

grid: dx=20mm, dy=20mm

Maximum value of SAR (interpolated) = 1.27 mW/g



0 dB = 1.27mW/g

SAMSUNG FCC ID : A3LSGHC417 835MHz GSM850 Head SAR

DUT: SGH-C417; Serial: FD-076-Y

Program Name: SGH-C417 GSM850 Left(Job No. : FD-076)

Procedure Name: Ear/Tilt, Ch.190, Ant.Fixed, Bat.Standard

Procedure Notes: Meas.Tissue Temp(celsius)-21.7, Ambient Temp-22.3 Test Date-14/Jul/2006[OET Bulletin 65-Supplement C, July 2001]

Communication System: GSM850; Frequency: 836.6 MHz;Duty Cycle: 1:8.3

Medium parameters used: $f = 836.6$ MHz; $\sigma = 0.92$ mho/m; $\epsilon_r = 41.3$; $\rho = 1000$ kg/m³

Phantom section: Left Section

DASY4 Configuration:

- Probe: ES3DV3 - SN3080; ConvF(5.69, 5.69, 5.69); Calibrated: 2006-05-30
- Sensor-Surface: 4mm (Mechanical Surface Detection)
- Electronics: DAE4 Sn686; Calibrated: 2006-05-05
- Phantom: SAM PHANTOM #2; Type: SAM; Serial: TP-1248
- Measurement SW: DASY4, V4.7 Build 44; Postprocessing SW: SEMCAD, V1.8 Build 171

Ear/Tilt, Ch.190, Ant.Fixed, Bat.Standard/Zoom Scan (5x5x7)/Cube 0: Measurement grid: dx=8mm, dy=8mm, dz=5mm

Reference Value = 14.4 V/m; Power Drift = 0.092 dB

Peak SAR (extrapolated) = 0.441 W/kg

SAR(1 g) = 0.344 mW/g

Maximum value of SAR (measured) = 0.366 mW/g

Ear/Tilt, Ch.190, Ant.Fixed, Bat.Standard/Area Scan (51x71x1): Measurement grid:

dx=20mm, dy=20mm

Maximum value of SAR (interpolated) = 0.367 mW/g



0 dB = 0.367mW/g

SAMSUNG FCC ID : A3LSGHC417 835MHz GSM850 Body SAR

DUT: SGH-C417; Serial: FD-076-Y

Program Name: SGH-C417 GSM850 Body (Job No. : FD-076)

Procedure Name: Body, Ch.251, Ant.Fixed, Bat.Standard

Procedure Notes: Meas.Tissue Temp(celsius)-21.5, Ambient Temp-22.2 Test Date-14/Jul/2006 [OET Bulletin 65-Supplement C, July 2001]

Communication System: GSM 850 (GPRS); Frequency: 848.8 MHz; Duty Cycle: 1:4.15
Medium parameters used: $f = 848.8$ MHz; $\sigma = 1$ mho/m; $\epsilon_r = 54.1$; $\rho = 1000$ kg/m³

Phantom section: Flat Section

DASY4 Configuration:

- Probe: ES3DV3 - SN3080; ConvF(5.75, 5.75, 5.75); Calibrated: 2006-05-30
- Sensor-Surface: 4mm (Mechanical Surface Detection)
- Electronics: DAE4 Sn686; Calibrated: 2006-05-05
- Phantom: SAM PHANTOM #1; Type: SAM; Serial: TP-1247
- Measurement SW: DASY4, V4.7 Build 44; Postprocessing SW: SEMCAD, V1.8 Build 171

Body, Ch.251, Ant.Fixed, Bat.Standard/Area Scan (51x71x1): Measurement grid:

dx=20mm, dy=20mm

Maximum value of SAR (interpolated) = 1.25 mW/g

Body, Ch.251, Ant.Fixed, Bat.Standard/Zoom Scan (5x5x7)/Cube 0: Measurement grid:

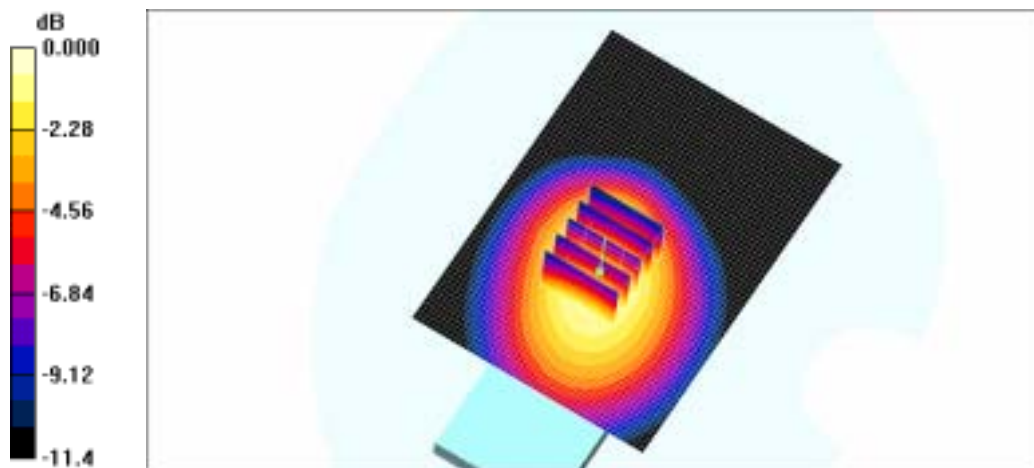
dx=8mm, dy=8mm, dz=5mm

Reference Value = 28.7 V/m; Power Drift = 0.071 dB

Peak SAR (extrapolated) = 1.62 W/kg

SAR(1 g) = 1.11 mW/g

Maximum value of SAR (measured) = 1.19 mW/g



0 dB = 1.19mW/g

SAMSUNG FCC ID : A3LSGHC417 835MHz GSM850 Head SAR

DUT: SGH-C417; Serial: FD-076-Y

Program Name: SGH-C417 GSM850 Right(Job No. : FD-076)

Procedure Name: Cheek/Touch, Ch.251, Ant.Fixed, Bat.Standard with BT ON

Procedure Notes: Meas.Tissue Temp(celsius)-21.7, Ambient Temp-22.3 Test Date-14/Jul/2006[OET Bulletin 65-Supplement C, July 2001]

Communication System: GSM850; Frequency: 848.8 MHz;Duty Cycle: 1:8.3

Medium parameters used: $f = 848.8$ MHz; $\sigma = 0.92$ mho/m; $\epsilon_r = 41.3$; $\rho = 1000$ kg/m³

Phantom section: Right Section

DASY4 Configuration:

- Probe: ES3DV3 - SN3080; ConvF(5.69, 5.69, 5.69); Calibrated: 2006-05-30
- Sensor-Surface: 4mm (Mechanical Surface Detection)
- Electronics: DAE4 Sn686; Calibrated: 2006-05-05
- Phantom: SAM PHANTOM #2; Type: SAM; Serial: TP-1248
- Measurement SW: DASY4, V4.7 Build 44; Postprocessing SW: SEMCAD, V1.8 Build 171

Cheek/Touch, Ch.251, Ant.Fixed, Bat.Standard with BT ON/Area Scan (51x71x1):

Measurement grid: dx=20mm, dy=20mm

Maximum value of SAR (interpolated) = 1.54 mW/g

Cheek/Touch, Ch.251, Ant.Fixed, Bat.Standard with BT ON/Zoom Scan (5x5x7)/Cube 0:

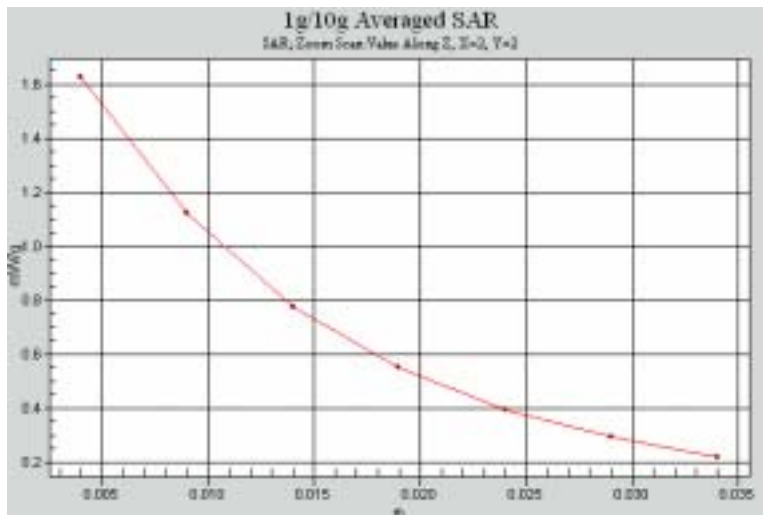
Measurement grid: dx=8mm, dy=8mm, dz=5mm

Reference Value = 10.5 V/m; Power Drift = 0.140 dB

Peak SAR (extrapolated) = 2.25 W/kg

SAR(1 g) = 1.51 mW/g

Maximum value of SAR (measured) = 1.62 mW/g



SAMSUNG FCC ID : A3LSGHC417 835MHz GSM850 Body SAR

DUT: SGH-C417; Serial: FD-076-Y

Program Name: SGH-C417 GSM850 Body (Job No. : FD-076)

Procedure Name: Body, Ch.251, Ant.Fixed, Bat.Standard

Procedure Notes: Meas.Tissue Temp(celsius)-21.5, Ambient Temp-22.2 Test Date-14/Jul/2006 [OET Bulletin 65-Supplement C, July 2001]

Communication System: GSM 850 (GPRS); Frequency: 848.8 MHz; Duty Cycle: 1:4.15
Medium parameters used: $f = 848.8$ MHz; $\sigma = 1$ mho/m; $\epsilon_r = 54.1$; $\rho = 1000$ kg/m³

Phantom section: Flat Section

DASY4 Configuration:

- Probe: ES3DV3 - SN3080; ConvF(5.75, 5.75, 5.75); Calibrated: 2006-05-30
- Sensor-Surface: 4mm (Mechanical Surface Detection)
- Electronics: DAE4 Sn686; Calibrated: 2006-05-05
- Phantom: SAM PHANTOM #1; Type: SAM; Serial: TP-1247
- Measurement SW: DASY4, V4.7 Build 44; Postprocessing SW: SEMCAD, V1.8 Build 171

Body, Ch.251, Ant.Fixed, Bat.Standard/Area Scan (51x71x1): Measurement grid:

dx=20mm, dy=20mm

Maximum value of SAR (interpolated) = 1.25 mW/g

Body, Ch.251, Ant.Fixed, Bat.Standard/Zoom Scan (5x5x7)/Cube 0: Measurement grid:

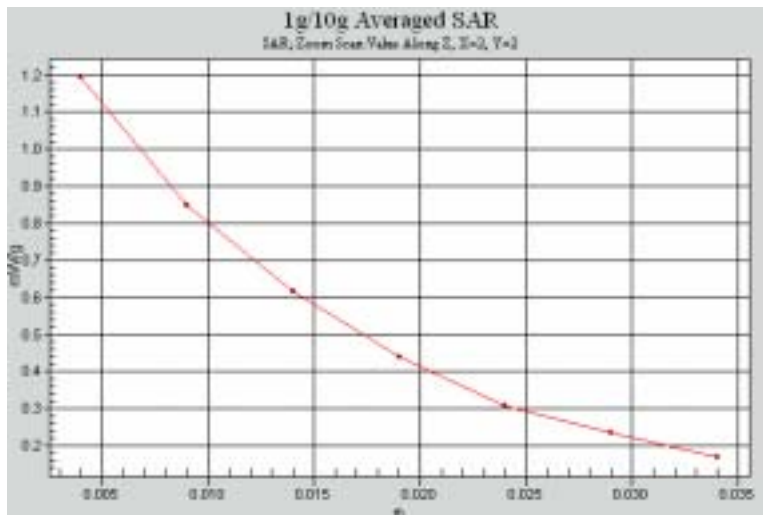
dx=8mm, dy=8mm, dz=5mm

Reference Value = 28.7 V/m; Power Drift = 0.071 dB

Peak SAR (extrapolated) = 1.62 W/kg

SAR(1 g) = 1.11 mW/g

Maximum value of SAR (measured) = 1.19 mW/g



SAMSUNG FCC ID : A3LSGHC417 1900MHz GSM1900 Head SAR

DUT: SGH-C417; Serial: FD-076-Y

Program Name: SGH-C417 GSM1900 Right (Job No. : FD-076)

Procedure Name: Cheek/Touch, Ch.810, Ant.Fixed, Bat.Standard with BT ON

Procedure Notes: Meas.Tissue Temp(celsius)-21.6, Ambient Temp-22.4;Test Date-15/Jul/2006[OET Bulletin 65-Supplement C, July 2001]

Communication System: GSM 1900; Frequency: 1909.8 MHz;Duty Cycle: 1:8.3

Medium parameters used: $f = 1909.8$ MHz; $\sigma = 1.39$ mho/m; $\epsilon_r = 39$; $\rho = 1000$ kg/m³

Phantom section: Right Section

DASY4 Configuration:

- Probe: ES3DV3 - SN3080; ConvF(5, 5, 5); Calibrated: 2006-05-30
- Sensor-Surface: 4mm (Mechanical Surface Detection)
- Electronics: DAE4 Sn686; Calibrated: 2006-05-05
- Phantom: SAM PHANTOM #1; Type: SAM; Serial: TP-1247
- Measurement SW: DASY4, V4.7 Build 44; Postprocessing SW: SEMCAD, V1.8 Build 171

Cheek/Touch, Ch.810, Ant.Fixed, Bat.Standard with BT ON/Area Scan (51x71x1):

Measurement grid: dx=20mm, dy=20mm

Maximum value of SAR (interpolated) = 1.03 mW/g

Cheek/Touch, Ch.810, Ant.Fixed, Bat.Standard with BT ON/Zoom Scan (5x5x7)/Cube 0:

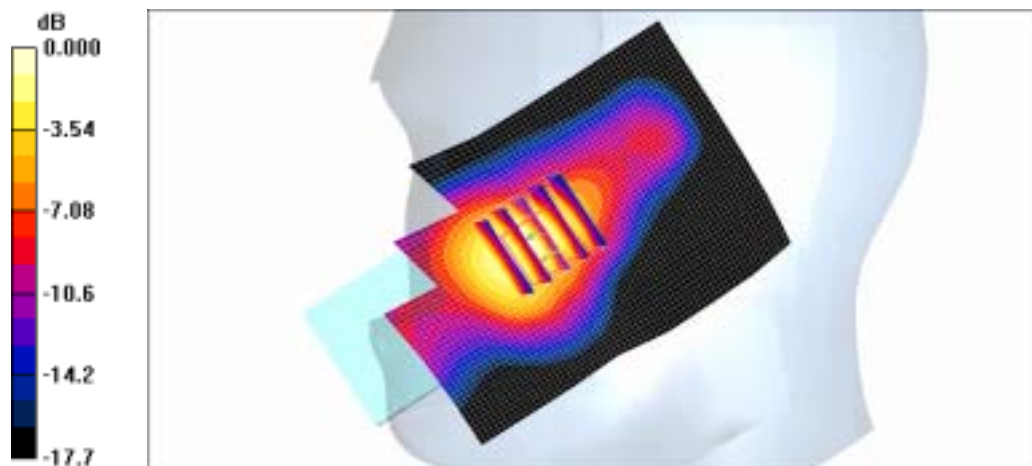
Measurement grid: dx=8mm, dy=8mm, dz=5mm

Reference Value = 29.2 V/m; Power Drift = -0.140 dB

Peak SAR (extrapolated) = 1.80 W/kg

SAR(1 g) = 1.17 mW/g

Maximum value of SAR (measured) = 1.21 mW/g



0 dB = 1.21mW/g

SAMSUNG FCC ID : A3LSGHC417 1900MHz GSM1900 Head SAR

DUT: SGH-C417; Serial: FD-076-Y

Program Name: SGH-C417 GSM1900 Right (Job No. : FD-076)

Procedure Name: Ear/Tilt, Ch.661, Ant.Fixed, Bat.Standard

Procedure Notes: Meas.Tissue Temp(celsius)-21.6, Ambient Temp-22.4;Test Date-15/Jul/2006[OET Bulletin 65-Supplement C, July 2001]

Communication System: GSM 1900; Frequency: 1880 MHz;Duty Cycle: 1:8.3

Medium parameters used: $f = 1880$ MHz; $\sigma = 1.39$ mho/m; $\epsilon_r = 39$; $\rho = 1000$ kg/m³

Phantom section: Right Section

DASY4 Configuration:

- Probe: ES3DV3 - SN3080; ConvF(5, 5, 5); Calibrated: 2006-05-30
- Sensor-Surface: 4mm (Mechanical Surface Detection)
- Electronics: DAE4 Sn686; Calibrated: 2006-05-05
- Phantom: SAM PHANTOM #1; Type: SAM; Serial: TP-1247
- Measurement SW: DASY4, V4.7 Build 44; Postprocessing SW: SEMCAD, V1.8 Build 171

Ear/Tilt, Ch.661, Ant.Fixed, Bat.Standard/Zoom Scan (5x5x7)/Cube 0: Measurement grid: dx=8mm, dy=8mm, dz=5mm

Reference Value = 9.26 V/m; Power Drift = -0.095 dB

Peak SAR (extrapolated) = 0.388 W/kg

SAR(1 g) = 0.251 mW/g

Maximum value of SAR (measured) = 0.269 mW/g

Ear/Tilt, Ch.661, Ant.Fixed, Bat.Standard/Area Scan (51x71x1): Measurement grid:

dx=20mm, dy=20mm

Maximum value of SAR (interpolated) = 0.309 mW/g



0 dB = 0.309mW/g

SAMSUNG FCC ID : A3LSGHC417 1900MHz GSM1900 Head SAR

DUT: SGH-C417; Serial: FD-076-Y

Program Name: SGH-C417 GSM1900 Left (Job No. : FD-076)

Procedure Name: Cheek/Touch, Ch.810, Ant.Fixed, Bat.Standard

Procedure Notes: Meas.Tissue Temp(celsius)-21.6, Ambient Temp-22.4;Test Date-15/Jul/2006[OET Bulletin 65-Supplement C, July 2001]

Communication System: GSM 1900; Frequency: 1909.8 MHz;Duty Cycle: 1:8.3

Medium parameters used: $f = 1909.8$ MHz; $\sigma = 1.39$ mho/m; $\epsilon_r = 39$; $\rho = 1000$ kg/m³

Phantom section: Left Section

DASY4 Configuration:

- Probe: ES3DV3 - SN3080; ConvF(5, 5, 5); Calibrated: 2006-05-30
- Sensor-Surface: 4mm (Mechanical Surface Detection)
- Electronics: DAE4 Sn686; Calibrated: 2006-05-05
- Phantom: SAM PHANTOM #1; Type: SAM; Serial: TP-1247
- Measurement SW: DASY4, V4.7 Build 44; Postprocessing SW: SEMCAD, V1.8 Build 171

Cheek/Touch, Ch.810, Ant.Fixed, Bat.Standard 2/Area Scan (51x71x1): Measurement grid: dx=20mm, dy=20mm

Maximum value of SAR (interpolated) = 0.756 mW/g

Cheek/Touch, Ch.810, Ant.Fixed, Bat.Standard 2/Zoom Scan (5x5x7)/Cube 0:

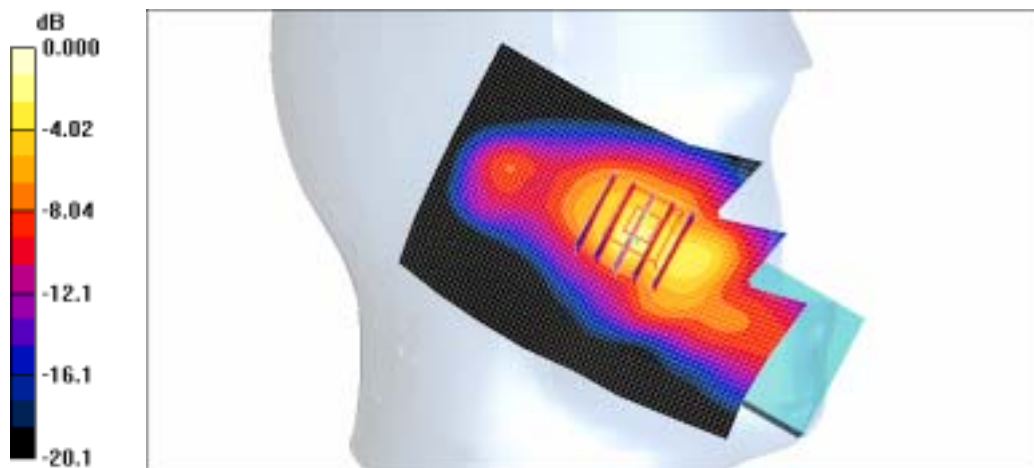
Measurement grid: dx=8mm, dy=8mm, dz=5mm

Reference Value = 17.8 V/m; Power Drift = -0.082 dB

Peak SAR (extrapolated) = 1.74 W/kg

SAR(1 g) = 1.03 mW/g

Maximum value of SAR (measured) = 1.14 mW/g



0 dB = 1.14mW/g

SAMSUNG FCC ID : A3LSGHC417 1900MHz GSM1900 Head SAR

DUT: SGH-C417; Serial: FD-076-Y

Program Name: SGH-C417 GSM1900 Left (Job No. : FD-076)

Procedure Name: Ear/Tilt, Ch.661, Ant.Fixed, Bat.Standard

Procedure Notes: Meas.Tissue Temp(celsius)-21.6, Ambient Temp-22.4;Test Date-15/Jul/2006[OET Bulletin 65-Supplement C, July 2001]

Communication System: GSM 1900; Frequency: 1880 MHz;Duty Cycle: 1:8.3

Medium parameters used: $f = 1880$ MHz; $\sigma = 1.39$ mho/m; $\epsilon_r = 39$; $\rho = 1000$ kg/m³

Phantom section: Left Section

DASY4 Configuration:

- Probe: ES3DV3 - SN3080; ConvF(5, 5, 5); Calibrated: 2006-05-30
- Sensor-Surface: 4mm (Mechanical Surface Detection)
- Electronics: DAE4 Sn686; Calibrated: 2006-05-05
- Phantom: SAM PHANTOM #1; Type: SAM; Serial: TP-1247
- Measurement SW: DASY4, V4.7 Build 44; Postprocessing SW: SEMCAD, V1.8 Build 171

Ear/Tilt, Ch.661, Ant.Fixed, Bat.Standard/Zoom Scan (5x5x7)/Cube 0: Measurement grid: dx=8mm, dy=8mm, dz=5mm

Reference Value = 9.31 V/m; Power Drift = -0.156 dB

Peak SAR (extrapolated) = 0.285 W/kg

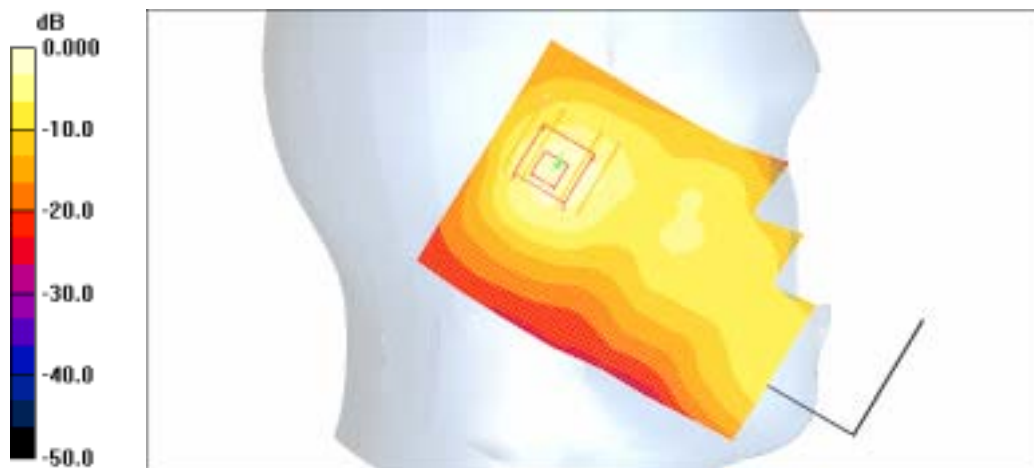
SAR(1 g) = 0.191 mW/g

Maximum value of SAR (measured) = 0.200 mW/g

Ear/Tilt, Ch.661, Ant.Fixed, Bat.Standard/Area Scan (51x71x1): Measurement grid:

dx=20mm, dy=20mm

Maximum value of SAR (interpolated) = 0.237 mW/g



0 dB = 0.237mW/g

SAMSUNG FCC ID : A3LSGHC417 1900MHz GSM1900 Body SAR

DUT: SGH-C417; Serial: FD-076-Y

Program Name: SGH-C417 GPRS1900 Body (Job No. : FD-076)

Procedure Name: Body, Ch.810, Ant.Fixed, Bat.Standard With BT ON

Procedure Notes: Meas.Tissue Temp(celsius)-21.7, Ambient Temp-22.3;Test Date-15/Jul/2006[OET Bulletin 65-Supplement C, July 2001]

Communication System: GSM1900 GPRS; Frequency: 1909.8 MHz;Duty Cycle: 1:4.15

Medium parameters used: $f = 1909.8$ MHz; $\sigma = 1.54$ mho/m; $\epsilon_r = 51.3$; $\rho = 1000$ kg/m³

Phantom section: Flat Section

DASY4 Configuration:

- Probe: ES3DV3 - SN3080; ConvF(4.5, 4.5, 4.5); Calibrated: 2006-05-30
- Sensor-Surface: 4mm (Mechanical Surface Detection)
- Electronics: DAE4 Sn686; Calibrated: 2006-05-05
- Phantom: SAM PHANTOM #2; Type: SAM; Serial: TP-1248
- Measurement SW: DASY4, V4.7 Build 44; Postprocessing SW: SEMCAD, V1.8 Build 171

Body, Ch.810, Ant.Fixed, Bat.Standard With BT ON/Area Scan (51x71x1): Measurement grid: dx=20mm, dy=20mm

Maximum value of SAR (interpolated) = 0.551 mW/g

Body, Ch.810, Ant.Fixed, Bat.Standard With BT ON/Zoom Scan (5x5x7)/Cube 0:

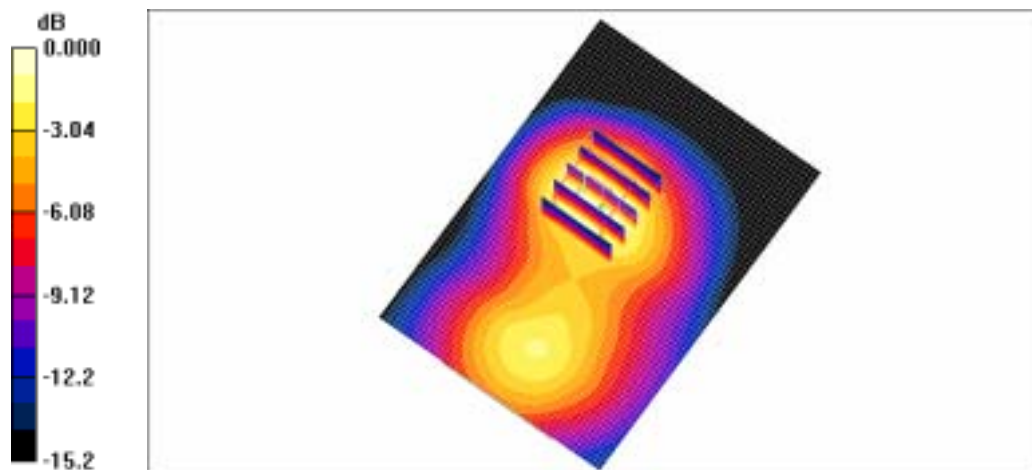
Measurement grid: dx=8mm, dy=8mm, dz=5mm

Reference Value = 15.8 V/m; Power Drift = 0.040 dB

Peak SAR (extrapolated) = 0.778 W/kg

SAR(1 g) = 0.513 mW/g

Maximum value of SAR (measured) = 0.551 mW/g



0 dB = 0.551mW/g

SAMSUNG FCC ID : A3LSGHC417 1900MHz GSM1900 Head SAR

DUT: SGH-C417; Serial: FD-076-Y

Program Name: SGH-C417 GSM1900 Right (Job No. : FD-076)

Procedure Name: Cheek/Touch, Ch.810, Ant.Fixed, Bat.Standard with BT ON

Procedure Notes: Meas.Tissue Temp(celsius)-21.6, Ambient Temp-22.4;Test Date-15/Jul/2006[OET Bulletin 65-Supplement C, July 2001]

Communication System: GSM 1900; Frequency: 1909.8 MHz;Duty Cycle: 1:8.3

Medium parameters used: $f = 1909.8$ MHz; $\sigma = 1.39$ mho/m; $\epsilon_r = 39$; $\rho = 1000$ kg/m³

Phantom section: Right Section

DASY4 Configuration:

- Probe: ES3DV3 - SN3080; ConvF(5, 5, 5); Calibrated: 2006-05-30
- Sensor-Surface: 4mm (Mechanical Surface Detection)
- Electronics: DAE4 Sn686; Calibrated: 2006-05-05
- Phantom: SAM PHANTOM #1; Type: SAM; Serial: TP-1247
- Measurement SW: DASY4, V4.7 Build 44; Postprocessing SW: SEMCAD, V1.8 Build 171

Cheek/Touch, Ch.810, Ant.Fixed, Bat.Standard with BT ON/Area Scan (51x71x1):

Measurement grid: dx=20mm, dy=20mm

Maximum value of SAR (interpolated) = 1.03 mW/g

Cheek/Touch, Ch.810, Ant.Fixed, Bat.Standard with BT ON/Zoom Scan (5x5x7)/Cube 0:

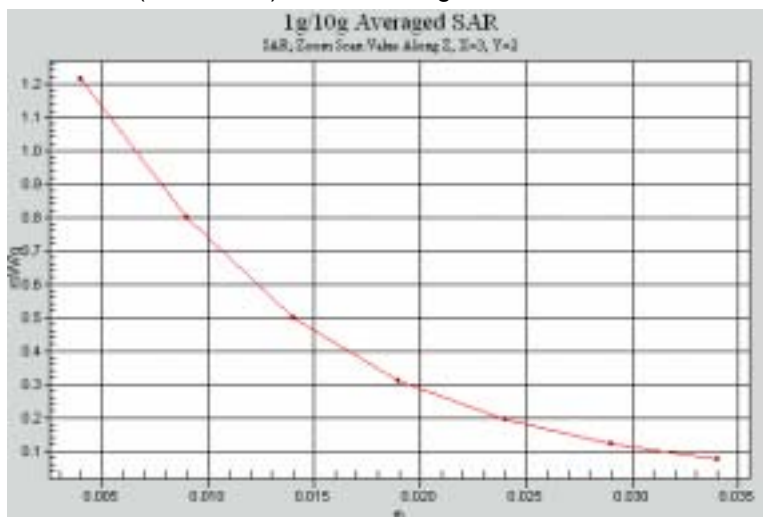
Measurement grid: dx=8mm, dy=8mm, dz=5mm

Reference Value = 29.2 V/m; Power Drift = -0.140 dB

Peak SAR (extrapolated) = 1.80 W/kg

SAR(1 g) = 1.17 mW/g

Maximum value of SAR (measured) = 1.21 mW/g



SAMSUNG FCC ID : A3LSGHC417 1900MHz GSM1900 Body SAR

DUT: SGH-C417; Serial: FD-076-Y

Program Name: SGH-C417 GPRS1900 Body (Job No. : FD-076)

Procedure Name: Body, Ch.810, Ant.Fixed, Bat.Standard With BT ON

Procedure Notes: Meas.Tissue Temp(celsius)-21.7, Ambient Temp-22.3;Test Date-15/Jul/2006[OET Bulletin 65-Supplement C, July 2001]

Communication System: GSM1900 GPRS; Frequency: 1909.8 MHz;Duty Cycle: 1:4.15

Medium parameters used: $f = 1909.8$ MHz; $\sigma = 1.54$ mho/m; $\epsilon_r = 51.3$; $\rho = 1000$ kg/m³

Phantom section: Flat Section

DASY4 Configuration:

- Probe: ES3DV3 - SN3080; ConvF(4.5, 4.5, 4.5); Calibrated: 2006-05-30
- Sensor-Surface: 4mm (Mechanical Surface Detection)
- Electronics: DAE4 Sn686; Calibrated: 2006-05-05
- Phantom: SAM PHANTOM #2; Type: SAM; Serial: TP-1248
- Measurement SW: DASY4, V4.7 Build 44; Postprocessing SW: SEMCAD, V1.8 Build 171

Body, Ch.810, Ant.Fixed, Bat.Standard With BT ON/Area Scan (51x71x1): Measurement grid: dx=20mm, dy=20mm

Maximum value of SAR (interpolated) = 0.551 mW/g

Body, Ch.810, Ant.Fixed, Bat.Standard With BT ON/Zoom Scan (5x5x7)/Cube 0:

Measurement grid: dx=8mm, dy=8mm, dz=5mm

Reference Value = 15.8 V/m; Power Drift = 0.040 dB

Peak SAR (extrapolated) = 0.778 W/kg

SAR(1 g) = 0.513 mW/g

Maximum value of SAR (measured) = 0.551 mW/g

