

GSM 850

Frequency: 836.6 MHz; Duty Cycle: 1:4; Room Ambient Temperature: 24.0°C; Liquid Temperature: 23.0°C
 Medium parameters used (interpolated): $f = 836.6$ MHz; $\sigma = 0.921$ S/m; $\epsilon_r = 40.411$; $\rho = 1000$ kg/m³

DASY5 Configuration:

- Area Scan Setting: Find Secondary Maximum Within: 2.0 dB and with a peak SAR value greater than 0.0012W/kg
- Electronics: DAE4 Sn1357; Calibrated: 2/20/2015
- Probe: EX3DV4 - SN3901; ConvF(9.59, 9.59, 9.59); Calibrated: 1/27/2015;
- Sensor-Surface: 2.5mm (Mechanical Surface Detection)
- Phantom: SAM v5.0 (A); Type: QD000P40CD; Serial: 1602

RHS/Touch_GPRS 2 slot_ch 190/Area Scan (7x13x1): Measurement grid: dx=15mm, dy=15mm

[Info: Interpolated medium parameters used for SAR evaluation.](#)

Maximum value of SAR (measured) = 0.185 W/kg

RHS/Touch_GPRS 2 slot_ch 190/Zoom Scan (5x5x7)/Cube 0: Measurement grid: dx=8mm, dy=8mm, dz=5mm

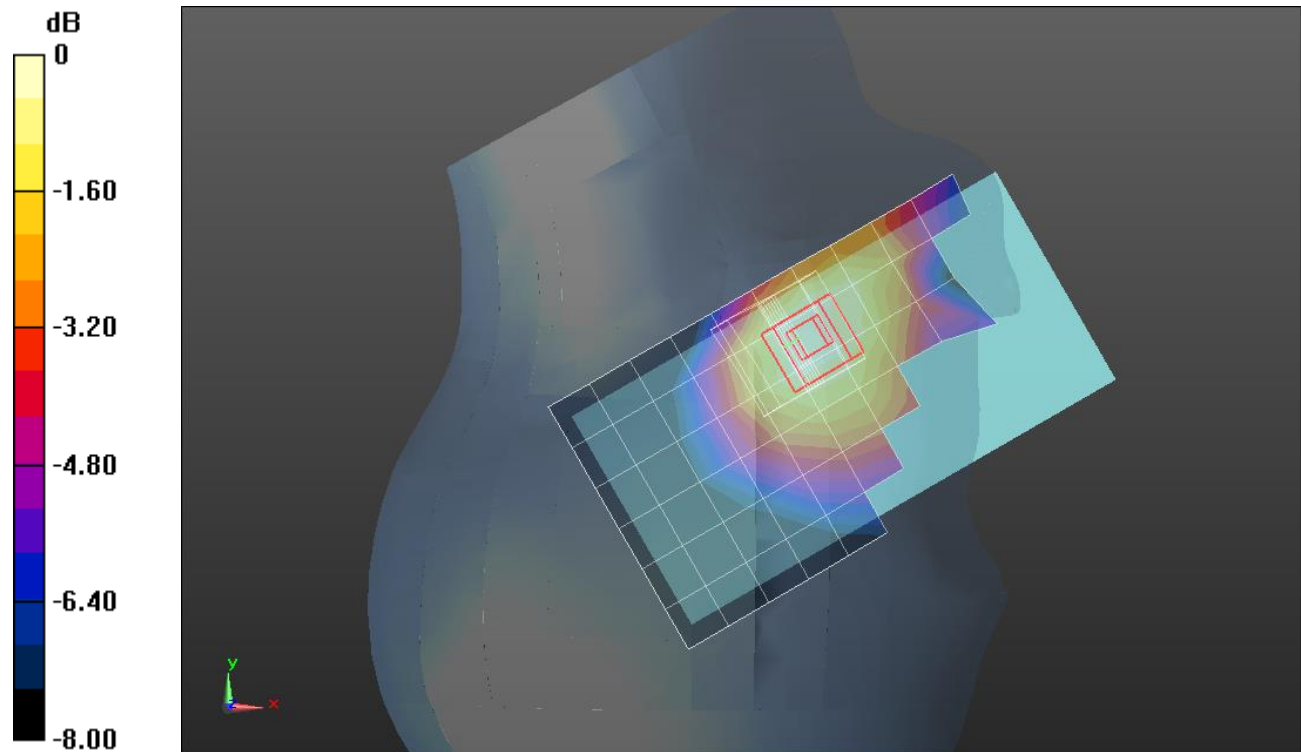
Reference Value = 14.47 V/m; Power Drift = -0.10 dB

Peak SAR (extrapolated) = 0.224 W/kg

SAR(1 g) = 0.178 W/kg; SAR(10 g) = 0.138 W/kg

[Info: Interpolated medium parameters used for SAR evaluation.](#)

Maximum value of SAR (measured) = 0.197 W/kg



0 dB = 0.197 W/kg = -7.06 dBW/kg

GSM 850

Frequency: 848.8 MHz; Duty Cycle: 1:8; Room Ambient Temperature: 24.0°C; Liquid Temperature: 23.0°C
 Medium parameters used (interpolated): $f = 848.8 \text{ MHz}$; $\sigma = 1.02 \text{ S/m}$; $\epsilon_r = 52.763$; $\rho = 1000 \text{ kg/m}^3$

DASY5 Configuration:

- Area Scan Setting: Find Secondary Maximum Within: 2.0 dB and with a peak SAR value greater than 0.0012W/kg
- Electronics: DAE4 Sn1357; Calibrated: 2/20/2015
- Probe: EX3DV4 - SN3901; ConvF(9.5, 9.5, 9.5); Calibrated: 1/27/2015;
- Sensor-Surface: 2.5mm (Mechanical Surface Detection (Locations From Previous Scan Used)), Sensor-Surface: 2.5mm (Mechanical Surface Detection)
- Phantom: ELI v5.0 (A); Type: QDOVA001BB; Serial: 1213

Rear/GSM Voice _ch 251/Area Scan (7x14x1): Measurement grid: dx=15mm, dy=15mm

[Info: Interpolated medium parameters used for SAR evaluation.](#)

Maximum value of SAR (measured) = 1.16 W/kg

Rear/GSM Voice _ch 251/Zoom Scan (5x5x7)/Cube 0: Measurement grid: dx=8mm, dy=8mm, dz=5mm

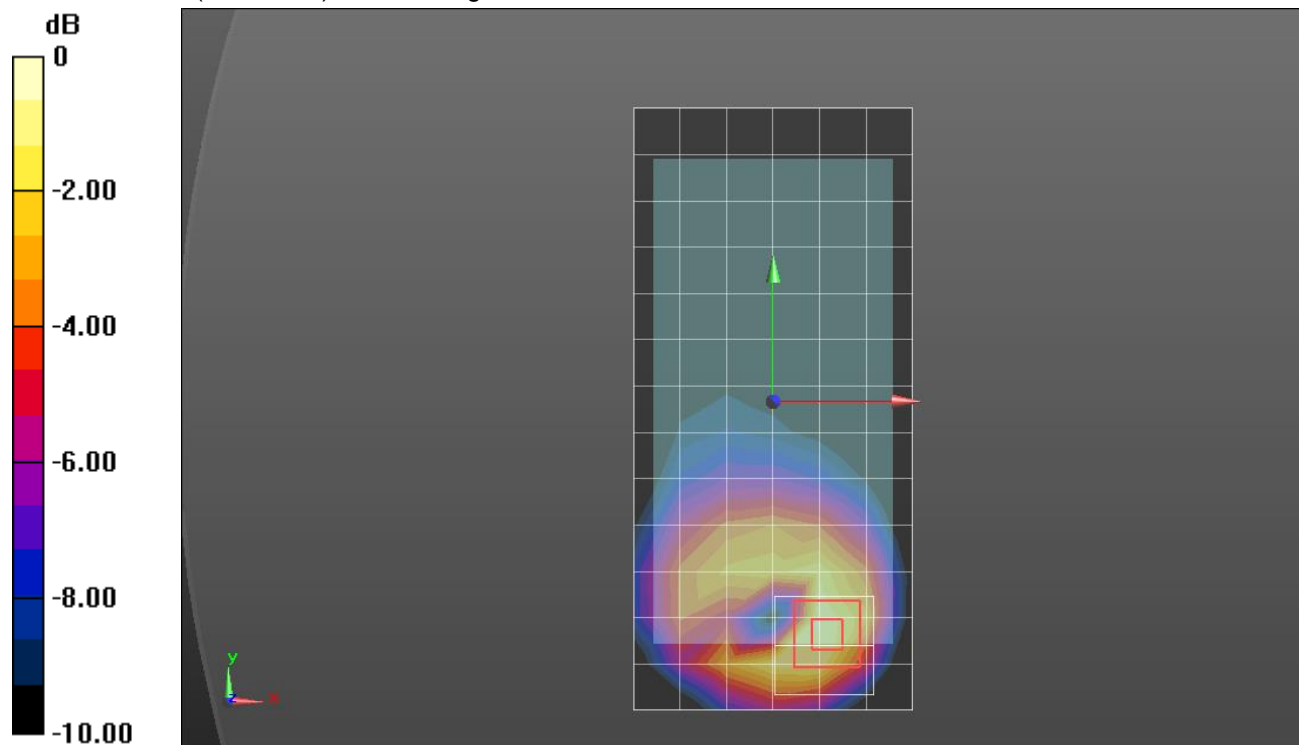
Reference Value = 35.07 V/m; Power Drift = -0.08 dB

Peak SAR (extrapolated) = 1.83 W/kg

SAR(1 g) = 1.03 W/kg; SAR(10 g) = 0.576 W/kg

[Info: Interpolated medium parameters used for SAR evaluation.](#)

Maximum value of SAR (measured) = 1.33 W/kg



0 dB = 1.33 W/kg = 1.24 dBW/kg

GSM 850

Frequency: 848.8 MHz; Duty Cycle: 1:4; Room Ambient Temperature: 24.0°C; Liquid Temperature: 23.0°C
 Medium parameters used (interpolated): $f = 848.8 \text{ MHz}$; $\sigma = 1.02 \text{ S/m}$; $\epsilon_r = 52.763$; $\rho = 1000 \text{ kg/m}^3$

DASY5 Configuration:

- Area Scan Setting: Find Secondary Maximum Within: 2.0 dB and with a peak SAR value greater than 0.0012W/kg
- Electronics: DAE4 Sn1357; Calibrated: 2/20/2015
- Probe: EX3DV4 - SN3901; ConvF(9.5, 9.5, 9.5); Calibrated: 1/27/2015;
- Sensor-Surface: 2.5mm (Mechanical Surface Detection (Locations From Previous Scan Used)), Sensor-Surface: 2.5mm (Mechanical Surface Detection)
- Phantom: ELI v5.0 (A); Type: QDOVA001BB; Serial: 1213

Rear 2/GSM GPRS 2 slot_ch 251/Area Scan (7x14x1): Measurement grid: dx=15mm, dy=15mm

[Info: Interpolated medium parameters used for SAR evaluation.](#)

Maximum value of SAR (measured) = 0.837 W/kg

Rear 2/GSM GPRS 2 slot_ch 251/Zoom Scan (5x5x7)/Cube 0: Measurement grid: dx=8mm, dy=8mm, dz=5mm

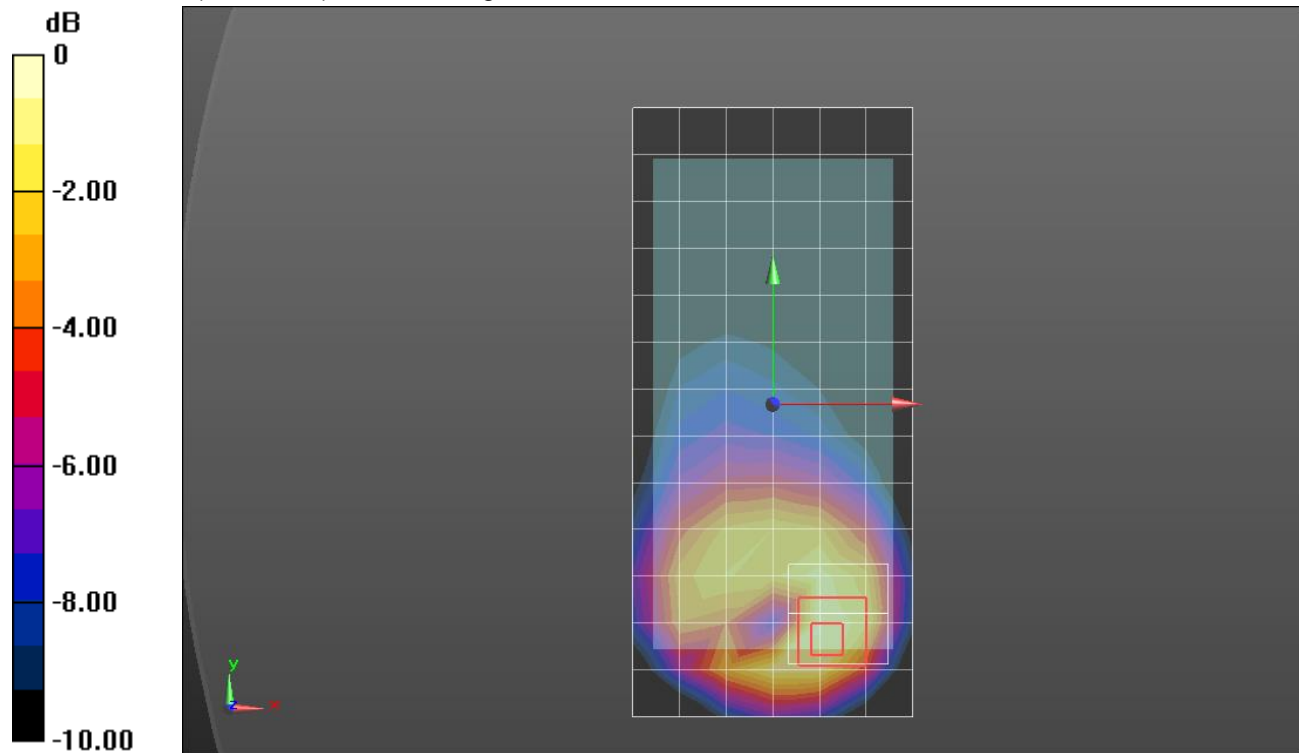
Reference Value = 29.83 V/m; Power Drift = -0.10 dB

Peak SAR (extrapolated) = 1.35 W/kg

SAR(1 g) = 0.769 W/kg; SAR(10 g) = 0.438 W/kg

[Info: Interpolated medium parameters used for SAR evaluation.](#)

Maximum value of SAR (measured) = 0.953 W/kg



0 dB = 0.953 W/kg = -0.21 dBW/kg

GSM1900

Frequency: 1880 MHz; Duty Cycle: 1:8; Room Ambient Temperature: 24.0°C; Liquid Temperature: 23.0°C

Medium parameters used: $f = 1880 \text{ MHz}$; $\sigma = 1.417 \text{ S/m}$; $\epsilon_r = 38.882$; $\rho = 1000 \text{ kg/m}^3$

DASY5 Configuration:

- Area Scan Setting: Find Secondary Maximum Within: 2.0 dB and with a peak SAR value greater than 0.0012W/kg
- Electronics: DAE4 Sn1360; Calibrated: 3/12/2015
- Probe: EX3DV4 - SN3751; ConvF(7.14, 7.14, 7.14); Calibrated: 11/14/2014;
- Sensor-Surface: 2.5mm (Mechanical Surface Detection)
- Phantom: SAM; Type: QD000PCD; Serial: 1632

LHS/Touch_GSM Voice_ch 661/Area Scan (7x13x1): Measurement grid: dx=15mm, dy=15mm

Maximum value of SAR (measured) = 0.146 W/kg

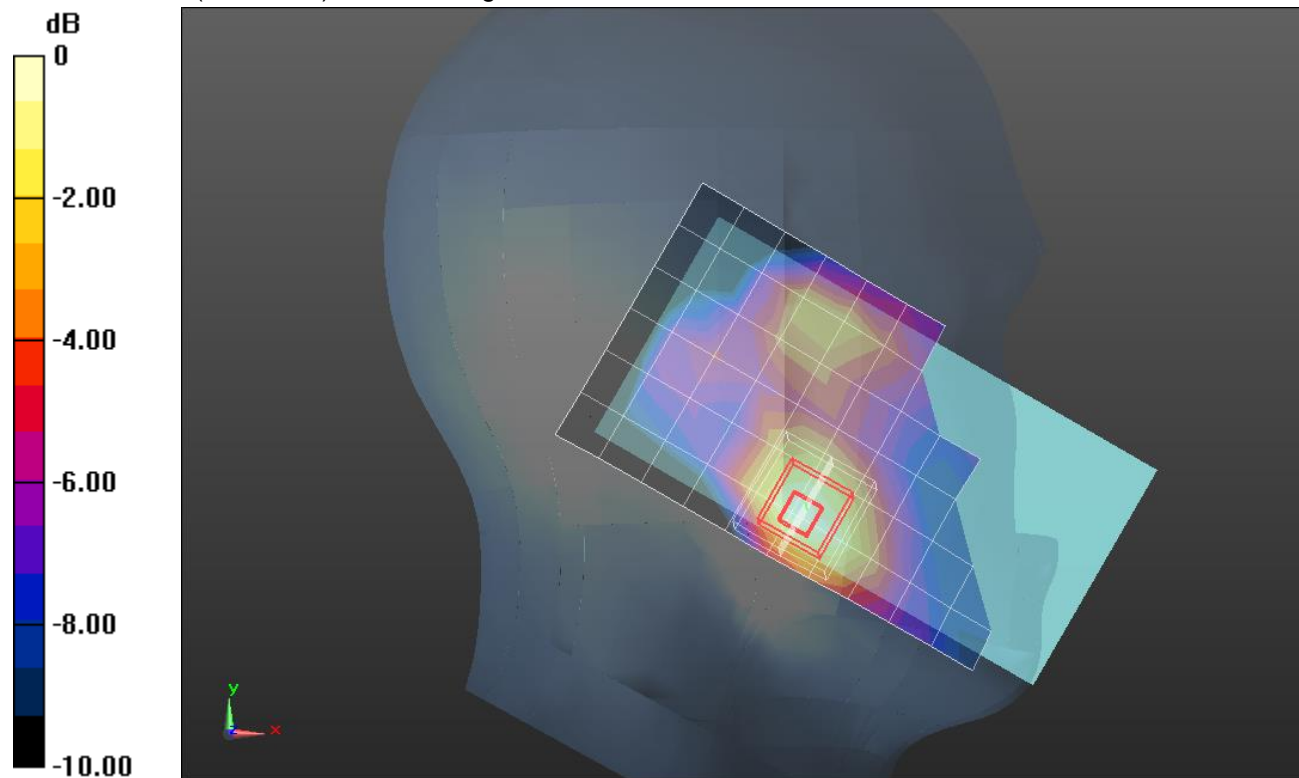
LHS/Touch_GSM Voice_ch 661/Zoom Scan (5x5x7)/Cube 0: Measurement grid: dx=8mm, dy=8mm, dz=5mm

Reference Value = 10.186 V/m; Power Drift = 0.04 dB

Peak SAR (extrapolated) = 0.187 W/kg

SAR(1 g) = 0.121 W/kg; SAR(10 g) = 0.074 W/kg

Maximum value of SAR (measured) = 0.144 W/kg



0 dB = 0.144 W/kg = -8.42 dBW/kg

GSM 1900

Frequency: 1880 MHz; Duty Cycle: 1:8; Room Ambient Temperature: 24.0°C; Liquid Temperature: 23.0°C

Medium parameters used: $f = 1880$ MHz; $\sigma = 1.559$ S/m; $\epsilon_r = 53.587$; $\rho = 1000$ kg/m³

DASY5 Configuration:

- Area Scan Setting: Find Secondary Maximum Within: 2.0 dB and with a peak SAR value greater than 0.0012W/kg
- Electronics: DAE4 Sn1360; Calibrated: 3/12/2015
- Probe: EX3DV4 - SN3751; ConvF(6.9, 6.9, 6.9); Calibrated: 11/14/2014;
- Sensor-Surface: 2.5mm (Mechanical Surface Detection)
- Phantom: ELI v5.0 (B); Type: QDOVA001BB; Serial: 1118

Rear/GSM Voice _ch 661/Area Scan (7x14x1): Measurement grid: dx=15mm, dy=15mm

Maximum value of SAR (measured) = 0.472 W/kg

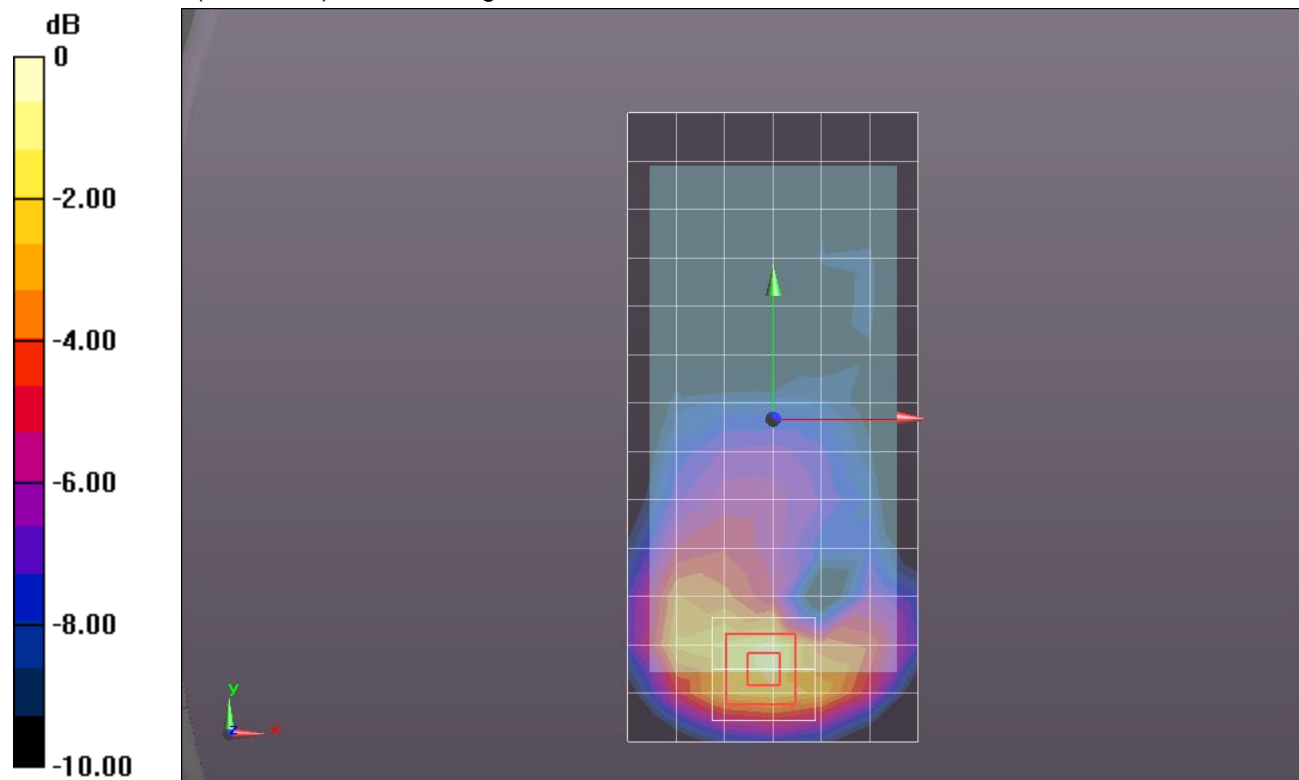
Rear/GSM Voice _ch 661/Zoom Scan (5x5x7)/Cube 0: Measurement grid: dx=8mm, dy=8mm, dz=5mm

Reference Value = 17.591 V/m; Power Drift = -0.09 dB

Peak SAR (extrapolated) = 0.753 W/kg

SAR(1 g) = 0.467 W/kg; SAR(10 g) = 0.270 W/kg

Maximum value of SAR (measured) = 0.597 W/kg



0 dB = 0.597 W/kg = -2.24 dBW/kg

GSM 1900

Frequency: 1880 MHz; Duty Cycle: 1:4; Room Ambient Temperature: 24.0°C; Liquid Temperature: 23.0°C

Medium parameters used: $f = 1880$ MHz; $\sigma = 1.517$ S/m; $\epsilon_r = 52.123$; $\rho = 1000$ kg/m³

DASY5 Configuration:

- Area Scan Setting: Find Secondary Maximum Within: 2.0 dB and with a peak SAR value greater than 0.0012W/kg
- Electronics: DAE4 Sn1360; Calibrated: 3/12/2015
- Probe: EX3DV4 - SN3751; ConvF(6.9, 6.9, 6.9); Calibrated: 11/14/2014;
- Sensor-Surface: 2.5mm (Mechanical Surface Detection)
- Phantom: ELI v5.0 (B); Type: QDOVA001BB; Serial: 1118

Edge 3/GPRS 2 slot_ch 661/Area Scan (7x14x1): Measurement grid: dx=15mm, dy=15mm

Maximum value of SAR (measured) = 0.706 W/kg

Edge 3/GPRS 2 slot_ch 661/Zoom Scan (5x5x7)/Cube 0: Measurement grid: dx=8mm, dy=8mm,

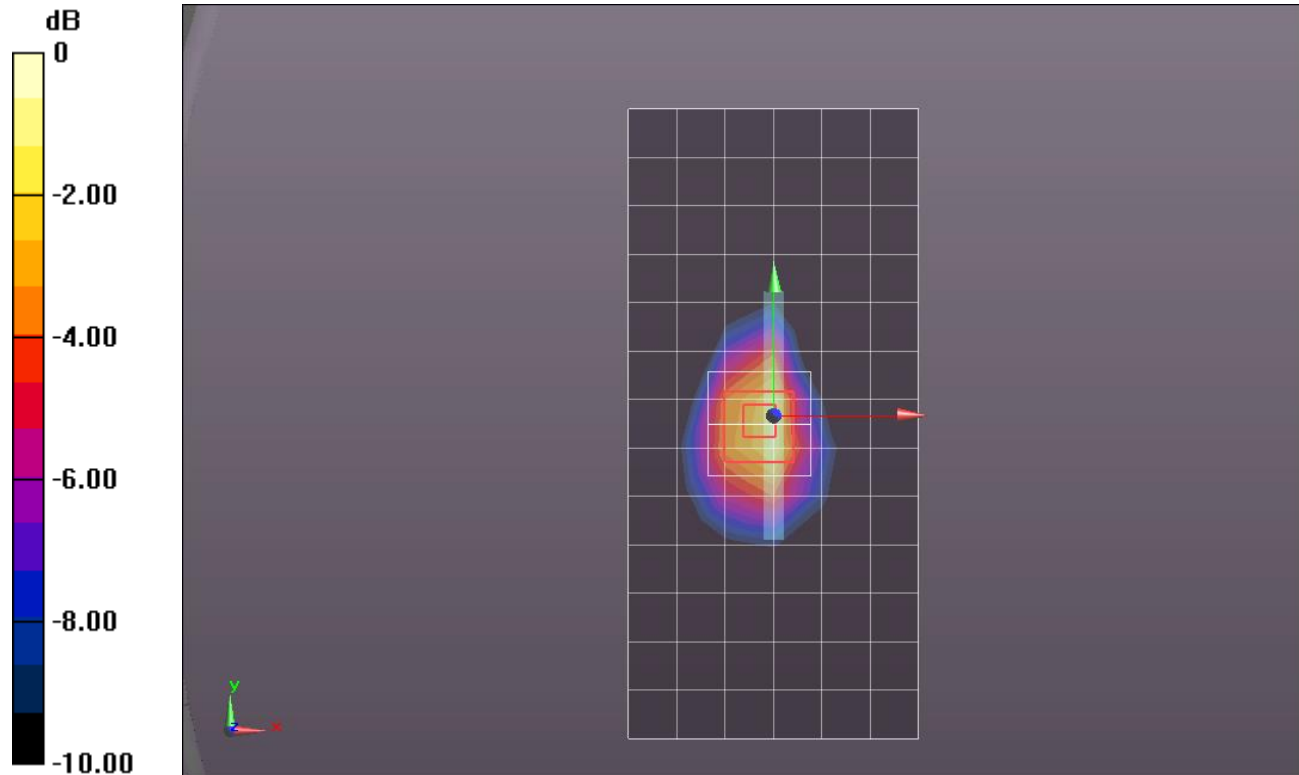
dz=5mm

Reference Value = 9.692 V/m; Power Drift = 0.05 dB

Peak SAR (extrapolated) = 1.19 W/kg

SAR(1 g) = 0.707 W/kg; SAR(10 g) = 0.388 W/kg

Maximum value of SAR (measured) = 0.922 W/kg



0 dB = 0.922 W/kg = -0.35 dBW/kg

W-CDMA Band V

Frequency: 836.6 MHz; Duty Cycle: 1:1; Room Ambient Temperature: 24.0°C; Liquid Temperature: 23.0°C
 Medium parameters used (interpolated): $f = 836.6$ MHz; $\sigma = 0.921$ S/m; $\epsilon_r = 40.411$; $\rho = 1000$ kg/m³

DASY5 Configuration:

- Area Scan Setting: Find Secondary Maximum Within: 2.0 dB and with a peak SAR value greater than 0.0012W/kg
- Electronics: DAE4 Sn1357; Calibrated: 2/20/2015
- Probe: EX3DV4 - SN3901; ConvF(9.59, 9.59, 9.59); Calibrated: 1/27/2015;
- Sensor-Surface: 2.5mm (Mechanical Surface Detection)
- Phantom: SAM v5.0 (A); Type: QD000P40CD; Serial: 1602

RHS/Touch_RMC Rel. 99 Ch 4183/Area Scan (7x13x1): Measurement grid: dx=15mm, dy=15mm

[Info: Interpolated medium parameters used for SAR evaluation.](#)

Maximum value of SAR (measured) = 0.173 W/kg

RHS/Touch_RMC Rel. 99 Ch 4183/Zoom Scan (5x5x7)/Cube 0: Measurement grid: dx=8mm, dy=8mm, dz=5mm

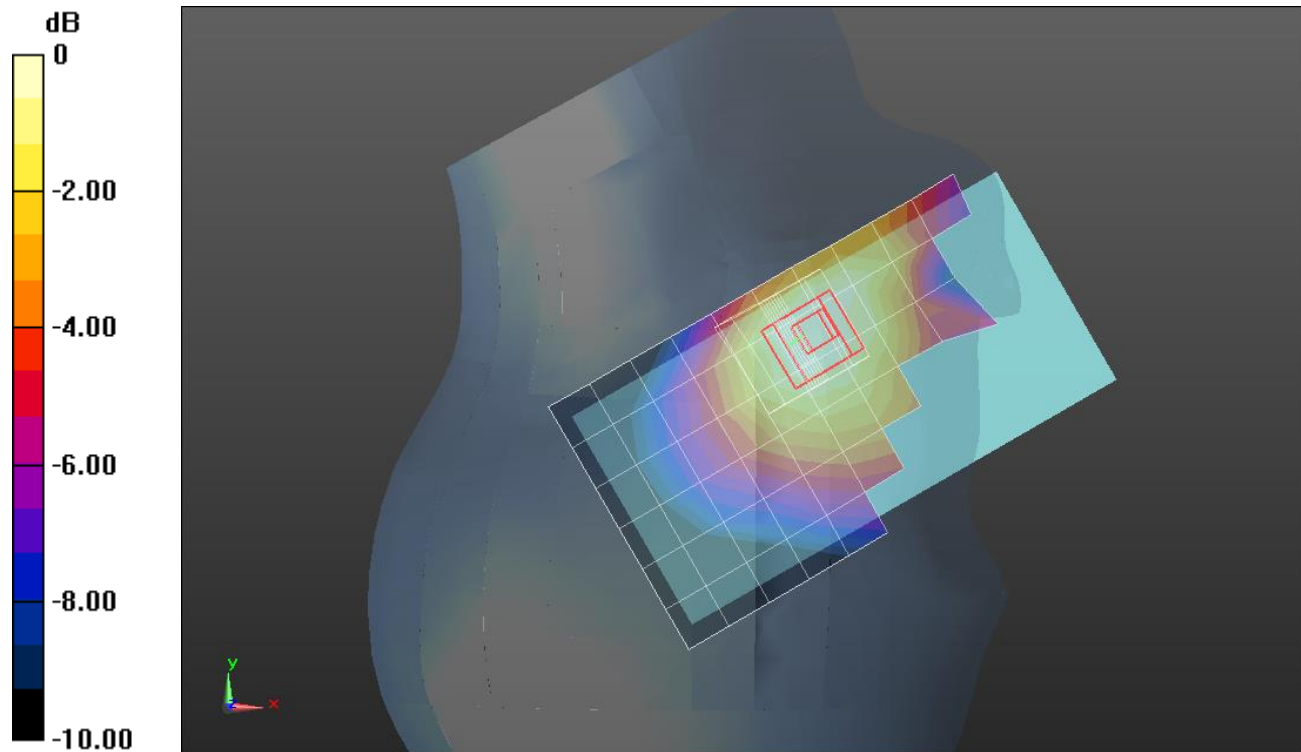
Reference Value = 13.88 V/m; Power Drift = -0.04 dB

Peak SAR (extrapolated) = 0.203 W/kg

SAR(1 g) = 0.163 W/kg; SAR(10 g) = 0.127 W/kg

[Info: Interpolated medium parameters used for SAR evaluation.](#)

Maximum value of SAR (measured) = 0.180 W/kg



0 dB = 0.180 W/kg = -7.45 dBW/kg

W-CDMA Band V

Frequency: 846.6 MHz; Duty Cycle: 1:1; Room Ambient Temperature: 24.0°C; Liquid Temperature: 23.0°C
 Medium parameters used (interpolated): $f = 846.6$ MHz; $\sigma = 1.018$ S/m; $\epsilon_r = 52.788$; $\rho = 1000$ kg/m³

DASY5 Configuration:

- Area Scan Setting: Find Secondary Maximum Within: 2.0 dB and with a peak SAR value greater than 0.0012W/kg
- Electronics: DAE4 Sn1357; Calibrated: 2/20/2015
- Probe: EX3DV4 - SN3901; ConvF(9.5, 9.5, 9.5); Calibrated: 1/27/2015;
- Sensor-Surface: 2.5mm (Mechanical Surface Detection (Locations From Previous Scan Used)), Sensor-Surface: 2.5mm (Mechanical Surface Detection)
- Phantom: ELI v5.0 (A); Type: QDOVA001BB; Serial: 1213

Rear/RMC Rel. 99 Ch 4233/Area Scan (7x14x1): Measurement grid: dx=15mm, dy=15mm

[Info: Interpolated medium parameters used for SAR evaluation.](#)

Maximum value of SAR (measured) = 0.967 W/kg

Rear/RMC Rel. 99 Ch 4233/Zoom Scan (5x5x7)/Cube 0: Measurement grid: dx=8mm, dy=8mm, dz=5mm

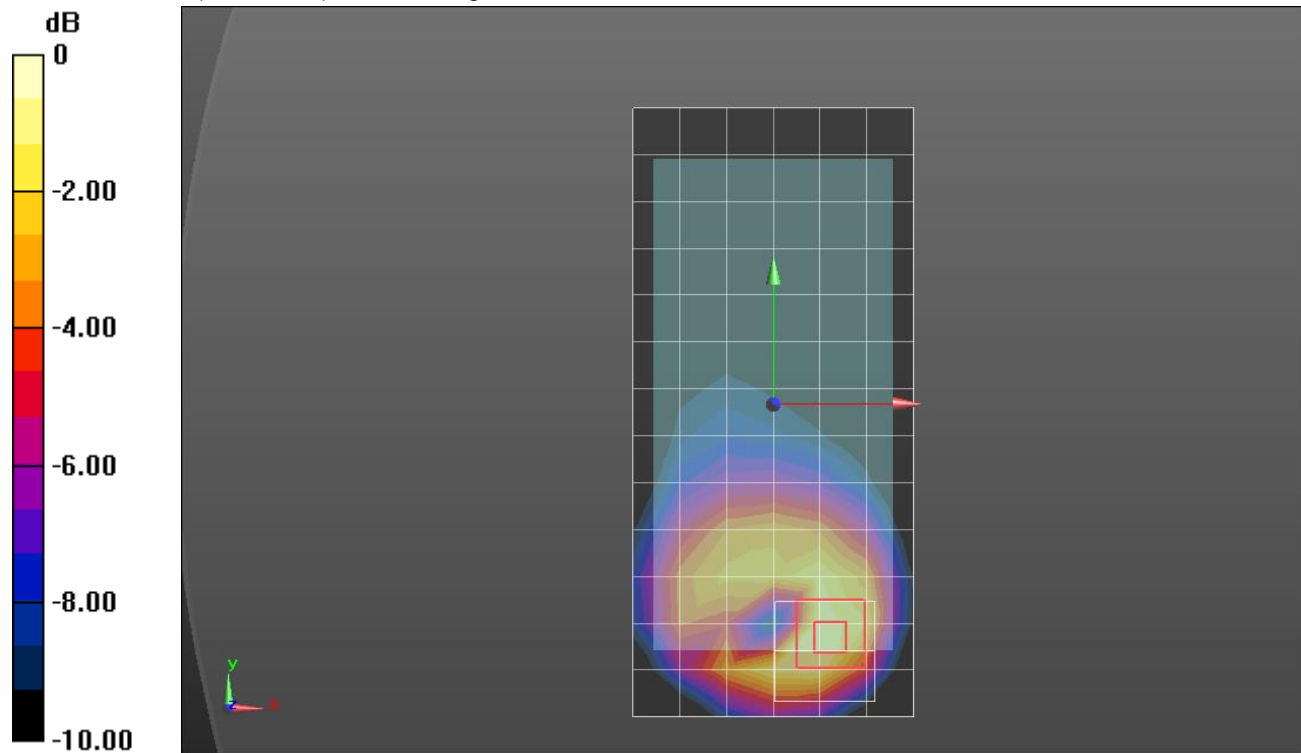
Reference Value = 32.27 V/m; Power Drift = 0.18 dB

Peak SAR (extrapolated) = 1.57 W/kg

SAR(1 g) = 0.892 W/kg; SAR(10 g) = 0.502 W/kg

[Info: Interpolated medium parameters used for SAR evaluation.](#)

Maximum value of SAR (measured) = 1.14 W/kg



0 dB = 1.14 W/kg = 0.57 dBW/kg

LTE Band 5

Frequency: 836.5 MHz; Duty Cycle: 1:1; Room Ambient Temperature: 24.0°C; Liquid Temperature: 23.0°C
 Medium parameters used (interpolated): $f = 836.5$ MHz; $\sigma = 0.921$ S/m; $\epsilon_r = 40.412$; $\rho = 1000$ kg/m³

DASY5 Configuration:

- Area Scan Setting: Find Secondary Maximum Within: 2.0 dB and with a peak SAR value greater than 0.0012W/kg
- Electronics: DAE4 Sn1357; Calibrated: 2/20/2015
- Probe: EX3DV4 - SN3901; ConvF(9.59, 9.59, 9.59); Calibrated: 1/27/2015;
- Sensor-Surface: 2.5mm (Mechanical Surface Detection)
- Phantom: SAM v5.0 (A); Type: QD000P40CD; Serial: 1602

RHS/Touch_QPSK_RB 1/0_ch 20525/Area Scan (7x13x1): Measurement grid: dx=15mm, dy=15mm

[Info: Interpolated medium parameters used for SAR evaluation.](#)

Maximum value of SAR (measured) = 0.205 W/kg

RHS/Touch_QPSK_RB 1/0_ch 20525/Zoom Scan (5x5x7)/Cube 0: Measurement grid: dx=8mm, dy=8mm, dz=5mm

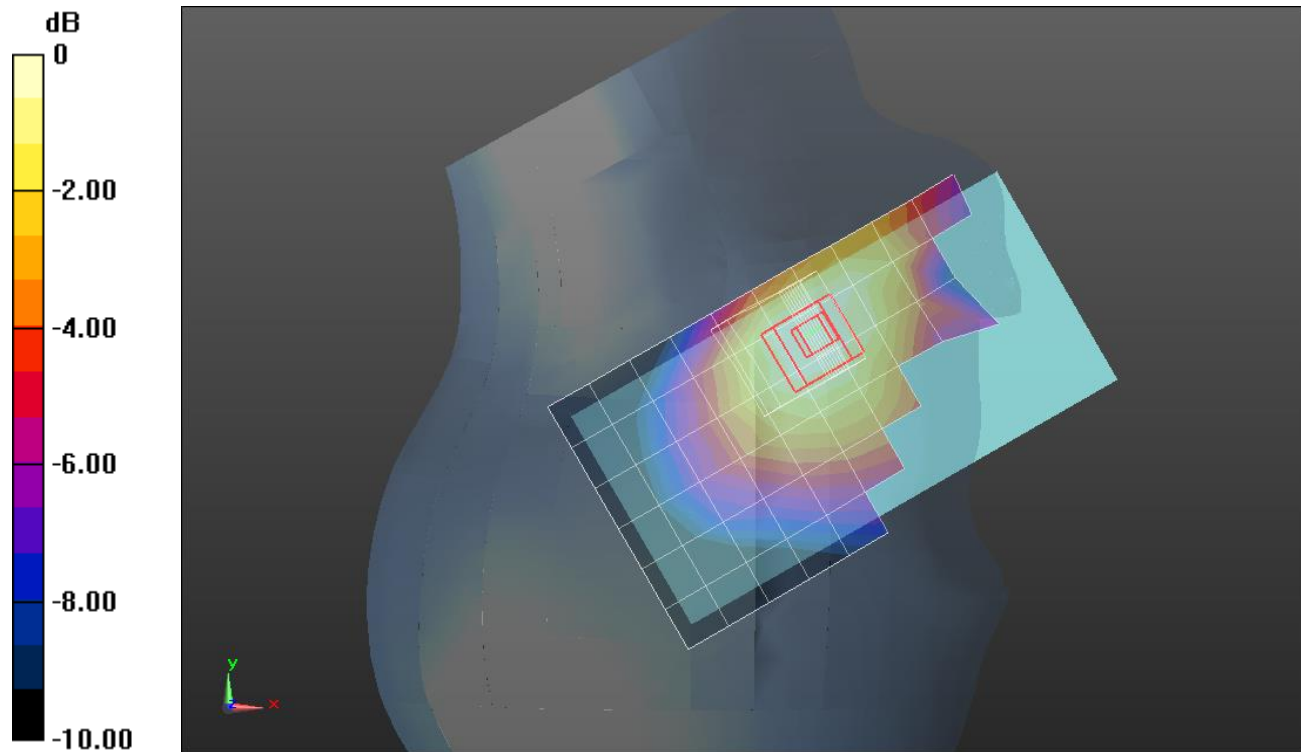
Reference Value = 15.09 V/m; Power Drift = -0.08 dB

Peak SAR (extrapolated) = 0.244 W/kg

SAR(1 g) = 0.195 W/kg; SAR(10 g) = 0.151 W/kg

[Info: Interpolated medium parameters used for SAR evaluation.](#)

Maximum value of SAR (measured) = 0.216 W/kg



0 dB = 0.216 W/kg = -6.66 dBW/kg

LTE Band 5

Frequency: 836.5 MHz; Duty Cycle: 1:1; Room Ambient Temperature: 24.0°C; Liquid Temperature: 23.0°C
 Medium parameters used (interpolated): $f = 836.5$ MHz; $\sigma = 1.009$ S/m; $\epsilon_r = 52.906$; $\rho = 1000$ kg/m³

DASY5 Configuration:

- Area Scan Setting: Find Secondary Maximum Within: 2.0 dB and with a peak SAR value greater than 0.0012W/kg
- Electronics: DAE4 Sn1357; Calibrated: 2/20/2015
- Probe: EX3DV4 - SN3901; ConvF(9.5, 9.5, 9.5); Calibrated: 1/27/2015;
- Sensor-Surface: 2.5mm (Mechanical Surface Detection (Locations From Previous Scan Used)), Sensor-Surface: 2.5mm (Mechanical Surface Detection)
- Phantom: ELI v5.0 (A); Type: QDOVA001BB; Serial: 1213

Rear/QPSK_RB 1/0_ch 20525/Area Scan (7x14x1): Measurement grid: dx=15mm, dy=15mm

[Info: Interpolated medium parameters used for SAR evaluation.](#)

Maximum value of SAR (measured) = 0.854 W/kg

Rear/QPSK_RB 1/0_ch 20525/Zoom Scan (5x5x7)/Cube 0: Measurement grid: dx=8mm, dy=8mm, dz=5mm

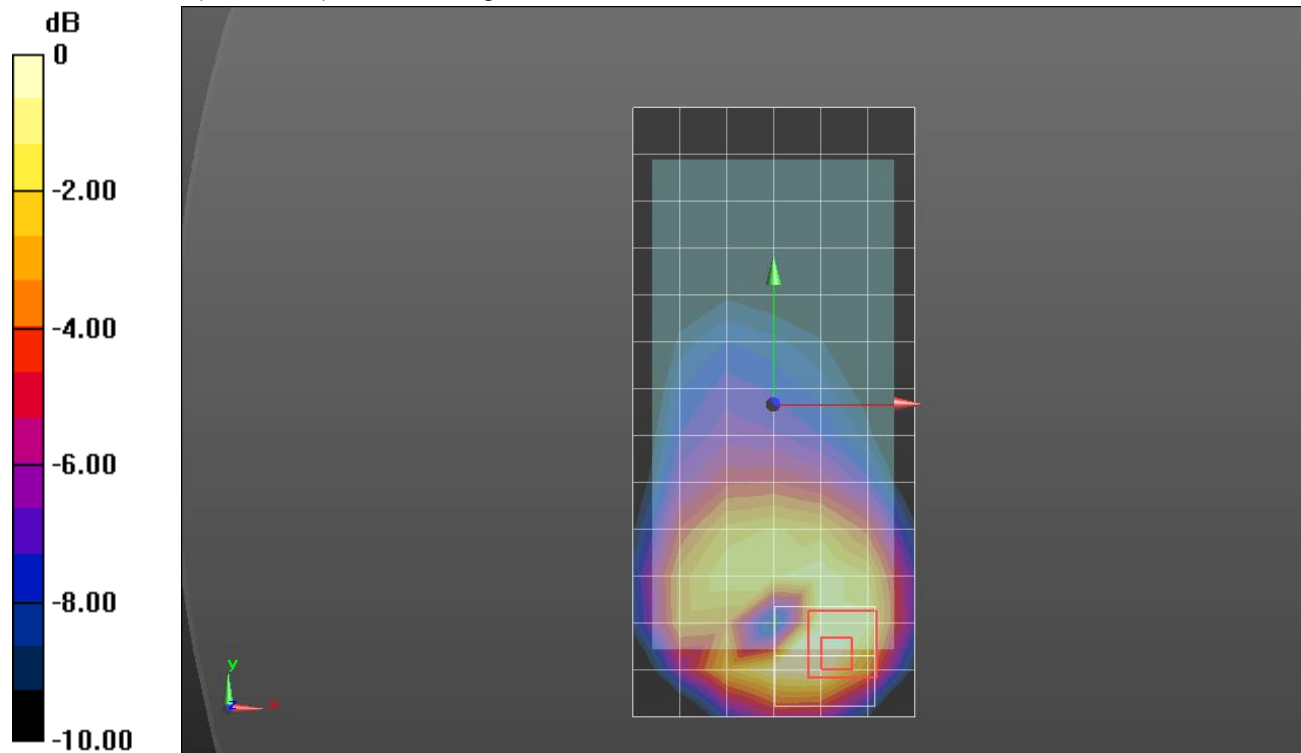
Reference Value = 28.59 V/m; Power Drift = -0.05 dB

Peak SAR (extrapolated) = 1.13 W/kg

SAR(1 g) = 0.665 W/kg; SAR(10 g) = 0.387 W/kg

[Info: Interpolated medium parameters used for SAR evaluation.](#)

Maximum value of SAR (measured) = 0.862 W/kg



0 dB = 0.862 W/kg = -0.64 dBW/kg

LTE Band 13

Frequency: 782 MHz; Duty Cycle: 1:1; Room Ambient Temperature: 24.0°C; Liquid Temperature: 23.0°C
 Medium parameters used (interpolated): $f = 782 \text{ MHz}$; $\sigma = 0.926 \text{ S/m}$; $\epsilon_r = 39.992$; $\rho = 1000 \text{ kg/m}^3$

DASY5 Configuration:

- Area Scan Setting: Find Secondary Maximum Within: 2.0 dB and with a peak SAR value greater than 0.0012W/kg
- Electronics: DAE4 Sn1439; Calibrated: 7/30/2015
- Probe: EX3DV4 - SN3772; ConvF(8.92, 8.92, 8.92); Calibrated: 2/23/2015;
- Sensor-Surface: 2.5mm (Mechanical Surface Detection)
- Phantom: SAM with CRP; Type: SAM;

RHS/Touch_QPSK_RB 25/0_ch 23230/Area Scan (7x13x1): Measurement grid: dx=15mm, dy=15mm

[Info: Interpolated medium parameters used for SAR evaluation.](#)

Maximum value of SAR (measured) = 0.0425 W/kg

RHS/Touch_QPSK_RB 25/0_ch 23230/Zoom Scan (5x5x7)/Cube 0: Measurement grid: dx=8mm, dy=8mm, dz=5mm

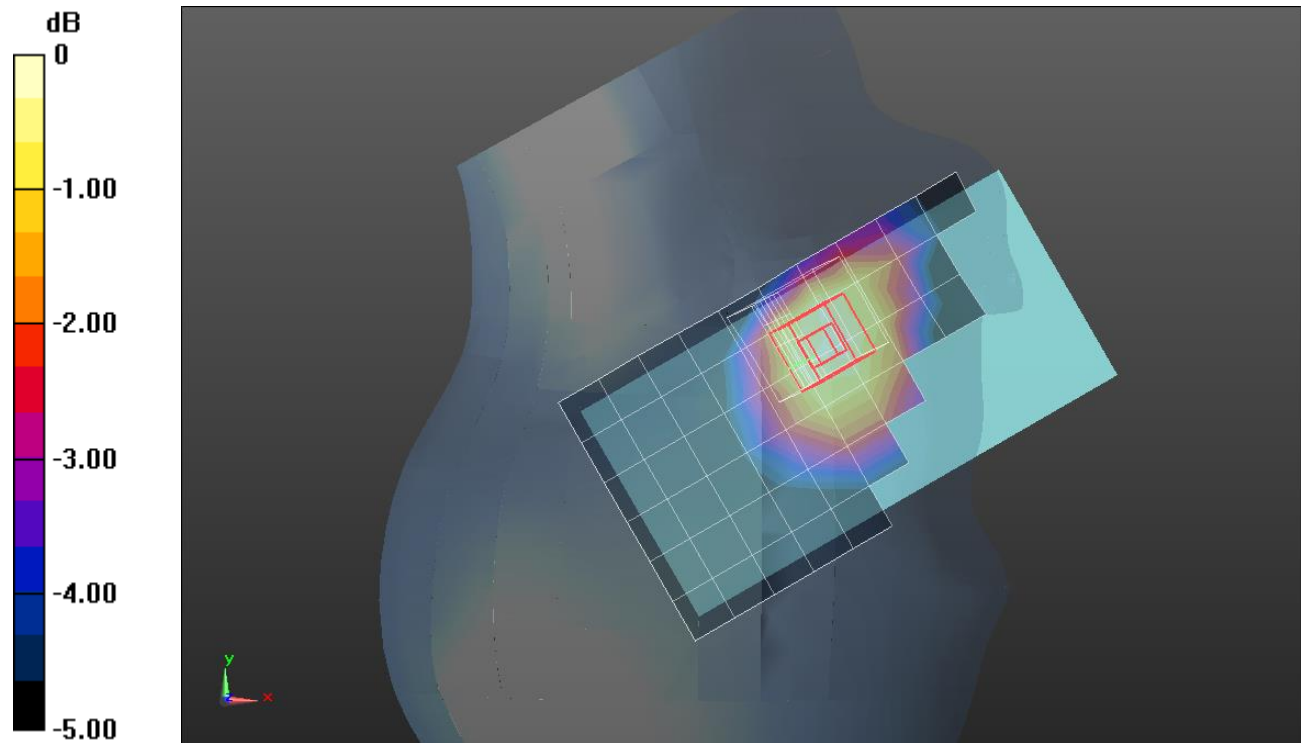
Reference Value = 6.771 V/m; Power Drift = 0.14 dB

Peak SAR (extrapolated) = 0.0480 W/kg

SAR(1 g) = 0.039 W/kg; SAR(10 g) = 0.030 W/kg

[Info: Interpolated medium parameters used for SAR evaluation.](#)

Maximum value of SAR (measured) = 0.0431 W/kg



0 dB = 0.0431 W/kg = -13.66 dBW/kg

LTE Band 13

Frequency: 782 MHz; Duty Cycle: 1:1; Room Ambient Temperature: 24.0°C; Liquid Temperature: 23.0°C
 Medium parameters used (interpolated): $f = 782 \text{ MHz}$; $\sigma = 0.996 \text{ S/m}$; $\epsilon_r = 53.782$; $\rho = 1000 \text{ kg/m}^3$

DASY5 Configuration:

- Area Scan Setting: Find Secondary Maximum Within: 2.0 dB and with a peak SAR value greater than 0.0012W/kg
- Electronics: DAE4 Sn1439; Calibrated: 7/30/2015
- Probe: EX3DV4 - SN3772; ConvF(8.82, 8.82, 8.82); Calibrated: 2/23/2015;
- Sensor-Surface: 2.5mm (Mechanical Surface Detection (Locations From Previous Scan Used)), Sensor-Surface: 2.5mm (Mechanical Surface Detection)
- Phantom: ELI v5.0 B; Type: QDOVA002AA; Serial: 1180

Rear/QPSK_RB 1/25_ch 23230/Area Scan (7x14x1): Measurement grid: dx=15mm, dy=15mm

[Info: Interpolated medium parameters used for SAR evaluation.](#)

Maximum value of SAR (measured) = 0.365 W/kg

Rear/QPSK_RB 1/25_ch 23230/Zoom Scan (5x5x7)/Cube 0: Measurement grid: dx=8mm, dy=8mm, dz=5mm

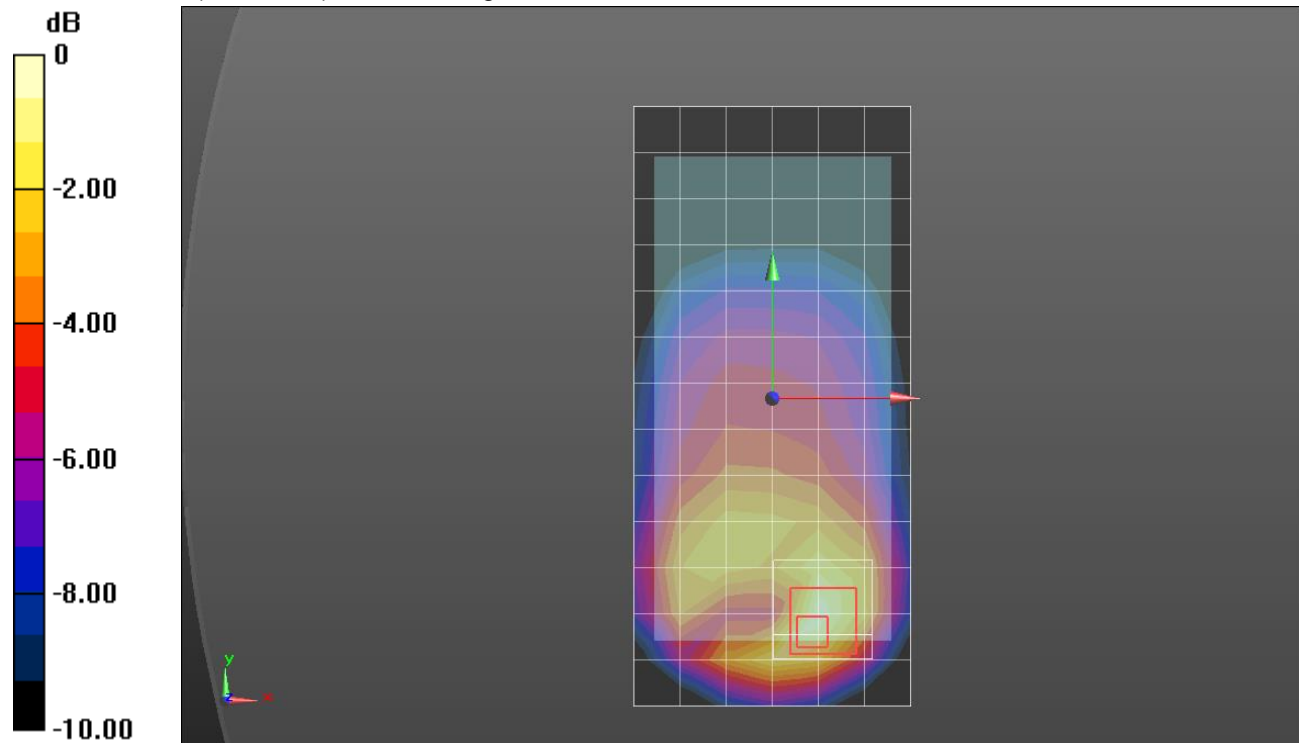
Reference Value = 19.35; Power Drift = -0.02

Peak SAR (extrapolated) = 0.529 W/kg

SAR(1 g) = 0.287 W/kg; SAR(10 g) = 0.164 W/kg

[Info: Interpolated medium parameters used for SAR evaluation.](#)

Maximum value of SAR (measured) = 0.375 W/kg



0 dB = 0.375 W/kg = -4.26 dBW/kg

LTE Band 17

Frequency: 710 MHz; Duty Cycle: 1:1; Room Ambient Temperature: 24.0°C; Liquid Temperature: 23.0°C

Medium parameters used: $f = 710 \text{ MHz}$; $\sigma = 0.865 \text{ S/m}$; $\epsilon_r = 41.209$; $\rho = 1000 \text{ kg/m}^3$

DASY5 Configuration:

- Area Scan Setting: Find Secondary Maximum Within: 2.0 dB and with a peak SAR value greater than 0.0012W/kg
- Electronics: DAE4 Sn1357; Calibrated: 2/20/2015
- Probe: EX3DV4 - SN3901; ConvF(10.08, 10.08, 10.08); Calibrated: 1/27/2015;
- Sensor-Surface: 2.5mm (Mechanical Surface Detection)
- Phantom: SAM v5.0 (A); Type: QD000P40CD; Serial: 1602

LHS/Touch_QPSK_RB 1/0_ch 23790/Area Scan (7x13x1): Measurement grid: dx=15mm, dy=15mm
 Maximum value of SAR (measured) = 0.0355 W/kg

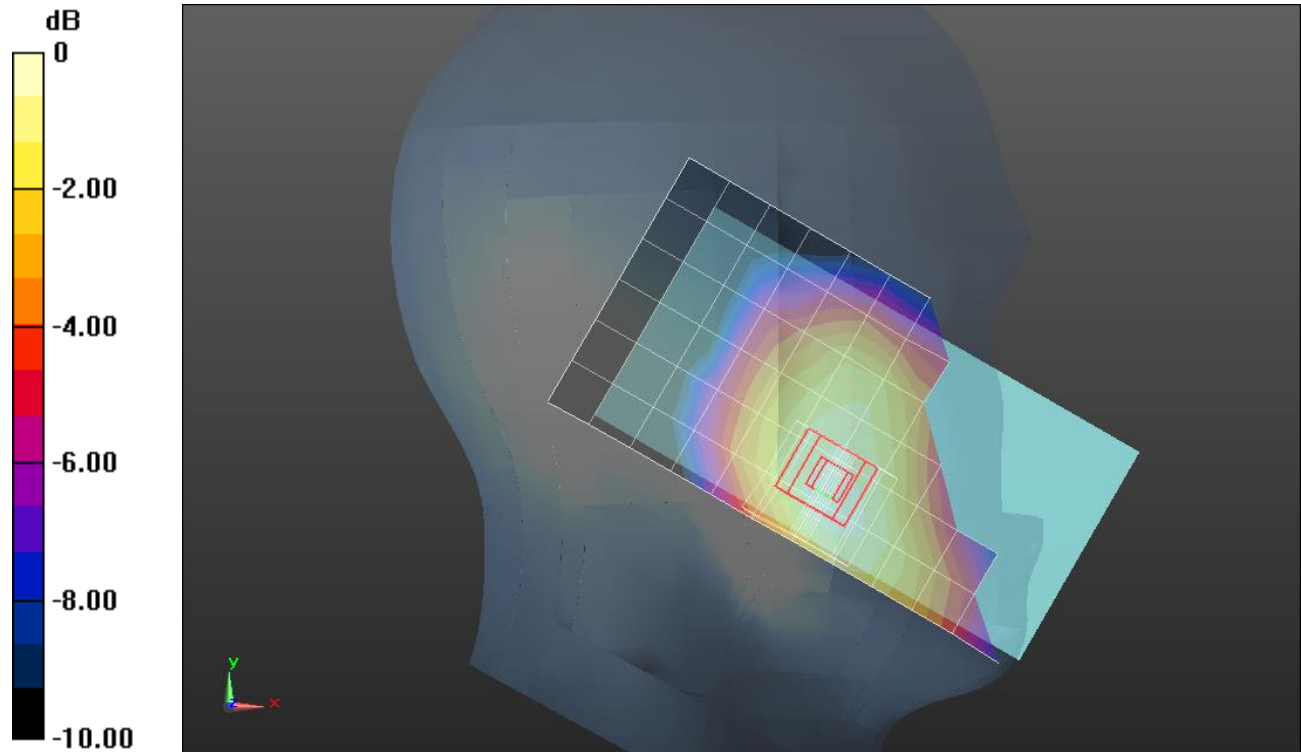
LHS/Touch_QPSK_RB 1/0_ch 23790/Zoom Scan (5x5x7)/Cube 0: Measurement grid: dx=8mm, dy=8mm, dz=5mm

Reference Value = 6.578 V/m; Power Drift = 0.17 dB

Peak SAR (extrapolated) = 0.0420 W/kg

SAR(1 g) = 0.033 W/kg; SAR(10 g) = 0.025 W/kg

Maximum value of SAR (measured) = 0.0370 W/kg



0 dB = 0.0370 W/kg = -14.32 dBW/kg

LTE Band 17

Frequency: 710 MHz; Duty Cycle: 1:1; Room Ambient Temperature: 24.0°C; Liquid Temperature: 23.0°C

Medium parameters used: $f = 710 \text{ MHz}$; $\sigma = 0.939 \text{ S/m}$; $\epsilon_r = 54.467$; $\rho = 1000 \text{ kg/m}^3$

DASY5 Configuration:

- Area Scan Setting: Find Secondary Maximum Within: 2.0 dB and with a peak SAR value greater than 0.0012W/kg
- Electronics: DAE4 Sn1357; Calibrated: 2/20/2015
- Probe: EX3DV4 - SN3901; ConvF(9.68, 9.68, 9.68); Calibrated: 1/27/2015;
- Sensor-Surface: 2.5mm (Mechanical Surface Detection)
- Phantom: ELI v5.0 (A); Type: QDOVA001BB; Serial: 1213

Rear/QPSK_RB 1/0_ch 23790/Area Scan (7x14x1): Measurement grid: dx=15mm, dy=15mm

Maximum value of SAR (measured) = 0.143 W/kg

Rear/QPSK_RB 1/0_ch 23790/Zoom Scan (5x5x7)/Cube 0: Measurement grid: dx=8mm, dy=8mm,

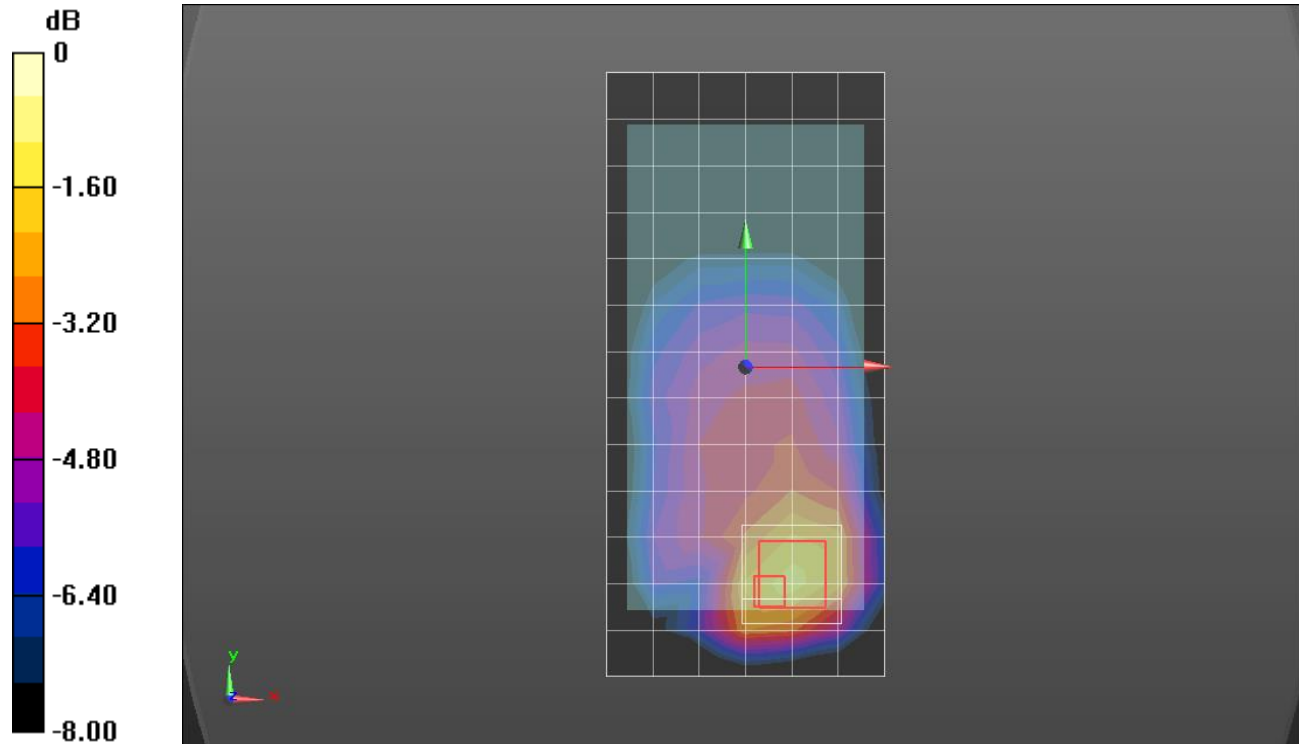
dz=5mm

Reference Value = 12.61 V/m; Power Drift = 0.02 dB

Peak SAR (extrapolated) = 0.283 W/kg

SAR(1 g) = 0.134 W/kg; SAR(10 g) = 0.073 W/kg

Maximum value of SAR (measured) = 0.191 W/kg



0 dB = 0.191 W/kg = -7.19 dBW/kg

LTE Band 26

Frequency: 819 MHz; Duty Cycle: 1:1; Room Ambient Temperature: 24.0°C; Liquid Temperature: 23.0°C
 Medium parameters used (interpolated): $f = 819 \text{ MHz}$; $\sigma = 0.89 \text{ S/m}$; $\epsilon_r = 42.405$; $\rho = 1000 \text{ kg/m}^3$

DASY5 Configuration:

- Area Scan Setting: Find Secondary Maximum Within: 2.0 dB and with a peak SAR value greater than 0.0012W/kg
- Electronics: DAE4 Sn1359; Calibrated: 2/18/2015
- Probe: EX3DV4 - SN3929; ConvF(8.67, 8.67, 8.67); Calibrated: 4/22/2015;
- Sensor-Surface: 2.5mm (Mechanical Surface Detection)
- Phantom: SAM with CRP; Type: SAM;

RHS/Touch_QPSK_RB 1/0_ch 26740/Area Scan (8x13x1): Measurement grid: dx=15mm, dy=15mm

[Info: Interpolated medium parameters used for SAR evaluation.](#)

Maximum value of SAR (measured) = 0.131 W/kg

RHS/Touch_QPSK_RB 1/0_ch 26740/Zoom Scan (5x5x7)/Cube 0: Measurement grid: dx=8mm, dy=8mm, dz=5mm

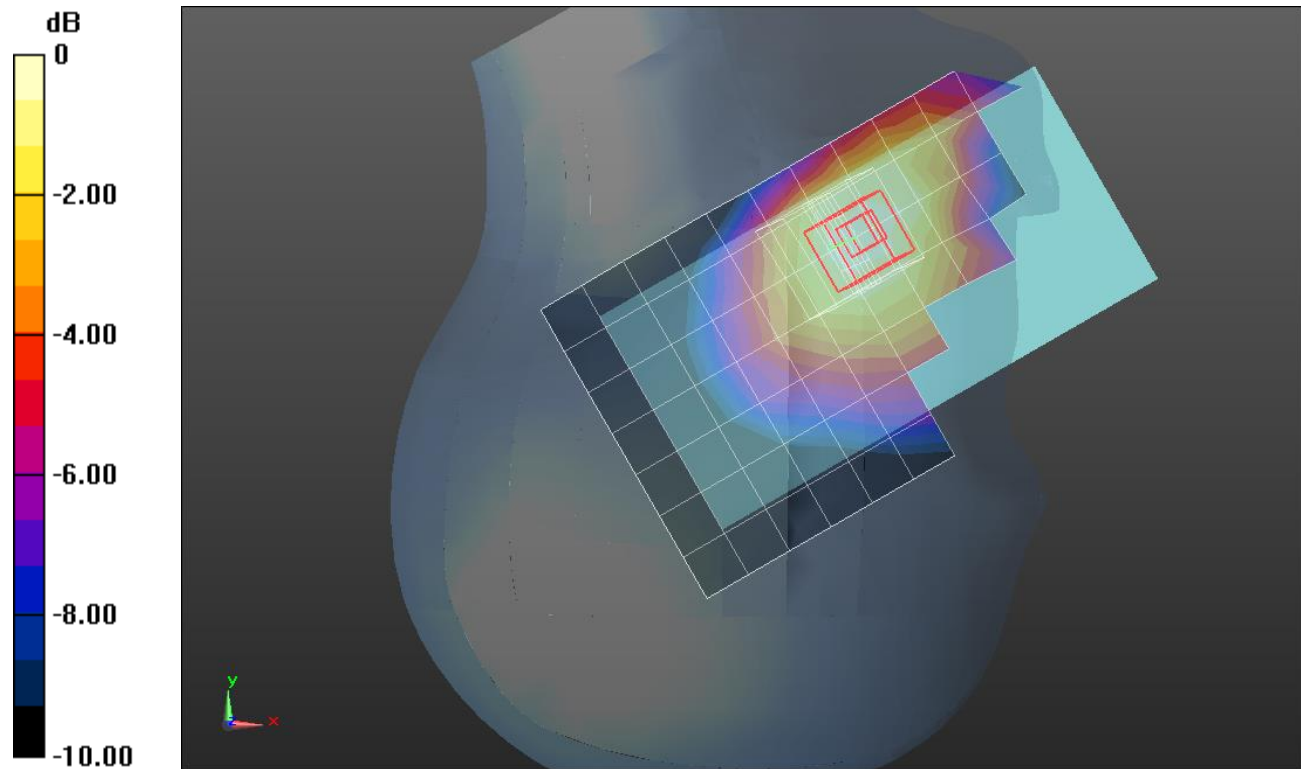
Reference Value = 11.983 V/m; Power Drift = 0.03 dB

Peak SAR (extrapolated) = 0.147 W/kg

SAR(1 g) = 0.121 W/kg; SAR(10 g) = 0.094 W/kg

[Info: Interpolated medium parameters used for SAR evaluation.](#)

Maximum value of SAR (measured) = 0.133 W/kg



0 dB = 0.133 W/kg = -8.76 dBW/kg

LTE Band 26

Frequency: 819 MHz; Duty Cycle: 1:1; Room Ambient Temperature: 24.0°C; Liquid Temperature: 23.0°C

Medium parameters used (interpolated): $f = 819$ MHz; $\sigma = 0.994$ S/m; $\epsilon_r = 54.222$; $\rho = 1000$ kg/m³

DASY5 Configuration:

- Area Scan Setting: Find Secondary Maximum Within: 2.0 dB and with a peak SAR value greater than 0.0012W/kg
- Electronics: DAE4 Sn1359; Calibrated: 2/18/2015
- Probe: EX3DV4 - SN3929; ConvF(8.57, 8.57, 8.57); Calibrated: 4/22/2015;
- Sensor-Surface: 2.5mm (Mechanical Surface Detection)
- Phantom: ELI v5.0 (B); Type: QDOVA001BB; Serial: 1118

Rear/QPSK_RB 1/0_ch 26740/Area Scan (7x14x1): Measurement grid: dx=15mm, dy=15mm

[Info: Interpolated medium parameters used for SAR evaluation.](#)

Maximum value of SAR (measured) = 0.762 W/kg

Rear/QPSK_RB 1/0_ch 26740/Zoom Scan (5x5x7)/Cube 0: Measurement grid: dx=8mm, dy=8mm, dz=5mm

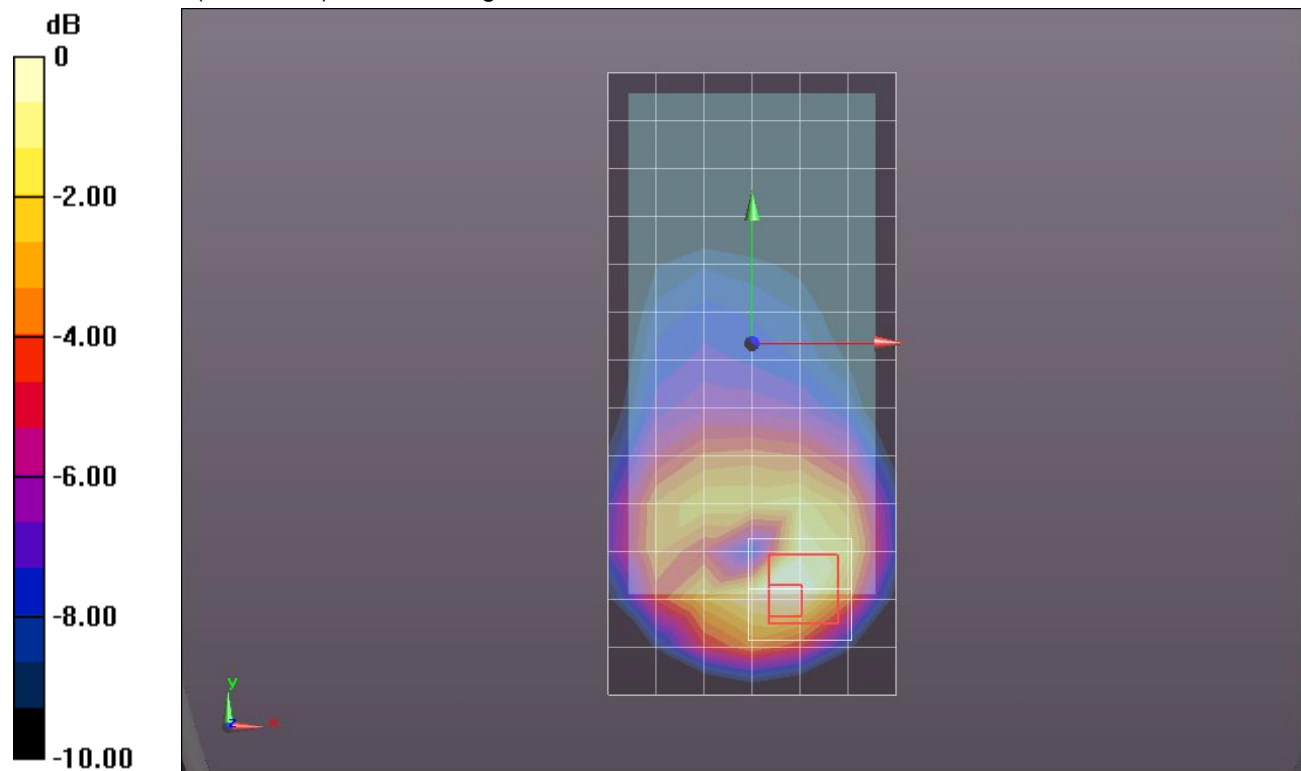
Reference Value = 28.261 V/m; Power Drift = 0.05 dB

Peak SAR (extrapolated) = 1.07 W/kg

SAR(1 g) = 0.619 W/kg; SAR(10 g) = 0.355 W/kg

[Info: Interpolated medium parameters used for SAR evaluation.](#)

Maximum value of SAR (measured) = 0.785 W/kg



0 dB = 0.785 W/kg = -1.05 dBW/kg

LTE Band 26

Frequency: 836.5 MHz; Duty Cycle: 1:1; Room Ambient Temperature: 24.0°C; Liquid Temperature: 23.0°C
 Medium parameters used (interpolated): $f = 836.5$ MHz; $\sigma = 0.907$ S/m; $\epsilon_r = 42.214$; $\rho = 1000$ kg/m³

DASY5 Configuration:

- Area Scan Setting: Find Secondary Maximum Within: 2.0 dB and with a peak SAR value greater than 0.0012W/kg
- Electronics: DAE4 Sn1359; Calibrated: 2/18/2015
- Probe: EX3DV4 - SN3929; ConvF(8.67, 8.67, 8.67); Calibrated: 4/22/2015;
- Sensor-Surface: 2.5mm (Mechanical Surface Detection (Locations From Previous Scan Used)), Sensor-Surface: 2.5mm (Mechanical Surface Detection)
- Phantom: SAM with CRP; Type: SAM;

RHS/Touch_QPSK_RB 1/36_ch 26915/Area Scan (8x13x1): Measurement grid: dx=15mm, dy=15mm

[Info: Interpolated medium parameters used for SAR evaluation.](#)

Maximum value of SAR (measured) = 0.195 W/kg

RHS/Touch_QPSK_RB 1/36_ch 26915/Zoom Scan (5x5x7)/Cube 0: Measurement grid: dx=8mm, dy=8mm, dz=5mm

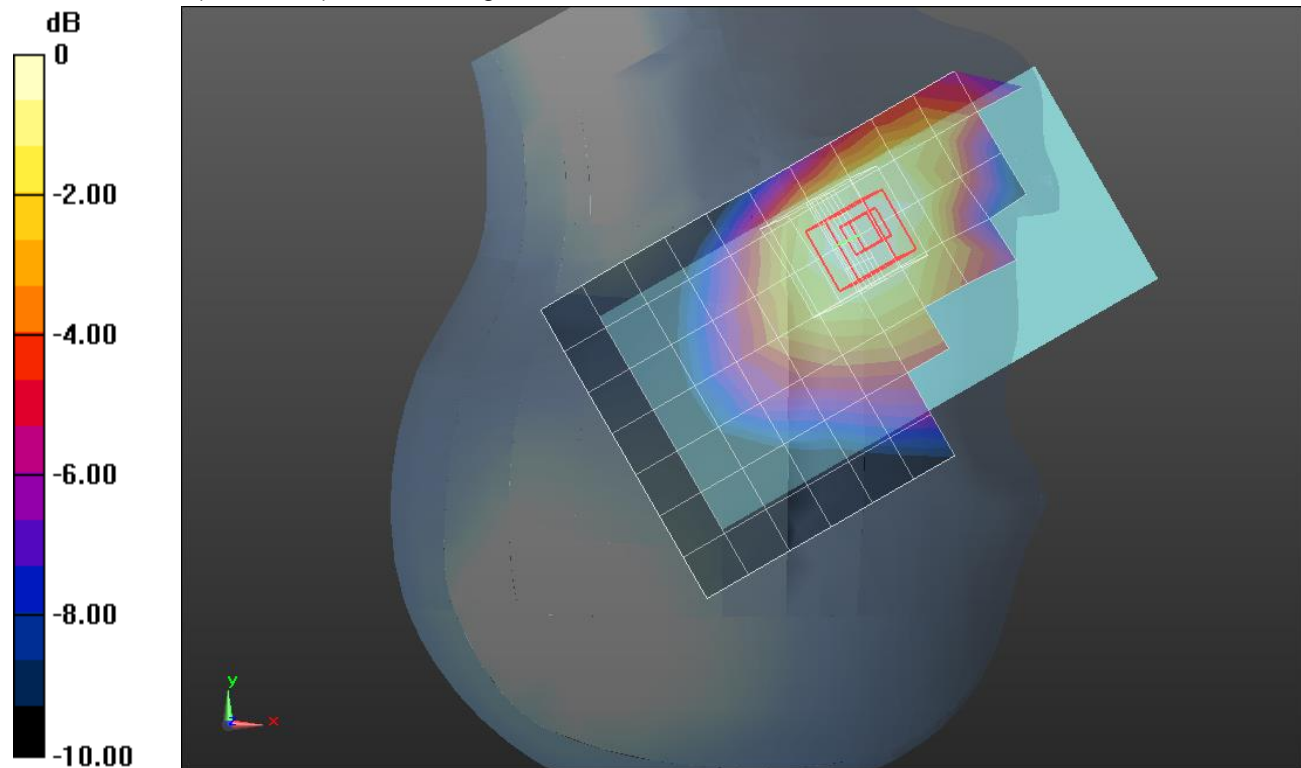
Reference Value = 14.438 V/m; Power Drift = 0.02 dB

Peak SAR (extrapolated) = 0.213 W/kg

SAR(1 g) = 0.174 W/kg; SAR(10 g) = 0.136 W/kg

[Info: Interpolated medium parameters used for SAR evaluation.](#)

Maximum value of SAR (measured) = 0.192 W/kg



0 dB = 0.192 W/kg = -7.17 dBW/kg

LTE Band 26

Frequency: 841.5 MHz; Duty Cycle: 1:1; Room Ambient Temperature: 24.0°C; Liquid Temperature: 23.0°C
 Medium parameters used (interpolated): $f = 841.5$ MHz; $\sigma = 1.018$ S/m; $\epsilon_r = 54.037$; $\rho = 1000$ kg/m³

DASY5 Configuration:

- Area Scan Setting: Find Secondary Maximum Within: 2.0 dB and with a peak SAR value greater than 0.0012W/kg
- Electronics: DAE4 Sn1359; Calibrated: 2/18/2015
- Probe: EX3DV4 - SN3929; ConvF(8.57, 8.57, 8.57); Calibrated: 4/22/2015;
- Sensor-Surface: 2.5mm (Mechanical Surface Detection (Locations From Previous Scan Used)), Sensor-Surface: 2.5mm (Mechanical Surface Detection)
- Phantom: ELI v5.0 (B); Type: QDOVA001BB; Serial: 1118

Rear/QPSK_RB 1/36_ch 26965/Area Scan (7x14x1): Measurement grid: dx=15mm, dy=15mm

[Info: Interpolated medium parameters used for SAR evaluation.](#)

Maximum value of SAR (measured) = 1.16 W/kg

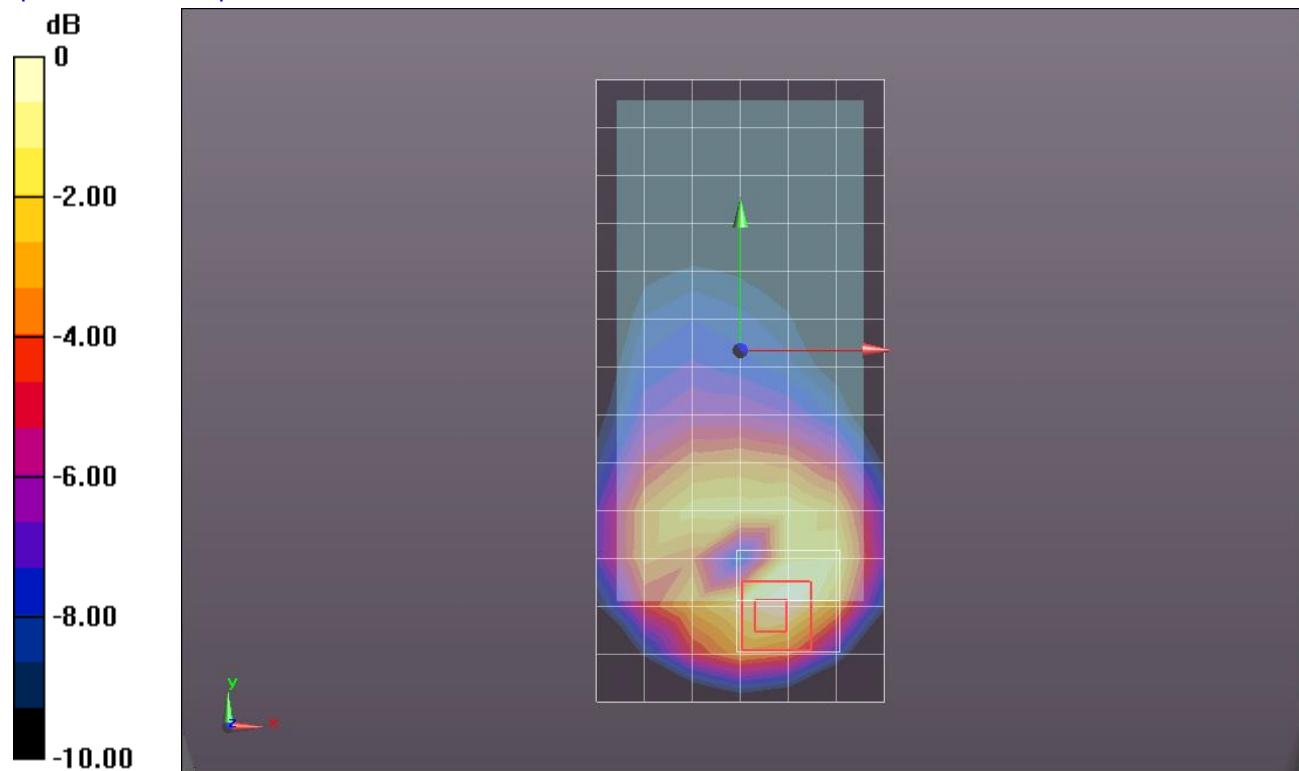
Rear/QPSK_RB 1/36_ch 26965/Zoom Scan (5x5x7)/Cube 0: Measurement grid: dx=8mm, dy=8mm, dz=5mm

Reference Value = 34.512 V/m; Power Drift = 0.02 dB

Peak SAR (extrapolated) = 1.54 W/kg

SAR(1 g) = 0.922 W/kg; SAR(10 g) = 0.528 W/kg

[Info: Interpolated medium parameters used for SAR evaluation.](#)



0 dB = 1.16 W/kg = 0.64 dBW/kg

LTE Band 41

Frequency: 2593 MHz; Duty Cycle: 1:1.6; Room Ambient Temperature: 24.0°C; Liquid Temperature: 23.0°C
 Medium parameters used (interpolated): $f = 2593 \text{ MHz}$; $\sigma = 2.018 \text{ S/m}$; $\epsilon_r = 39.59$; $\rho = 1000 \text{ kg/m}^3$

DASY5 Configuration:

- Area Scan Setting: Find Secondary Maximum Within: 2.0 dB and with a peak SAR value greater than 0.0012W/kg
- Electronics: DAE4 Sn1357; Calibrated: 2/20/2015
- Probe: EX3DV4 - SN3901; ConvF(6.97, 6.97, 6.97); Calibrated: 1/27/2015;
- Sensor-Surface: 2.5mm (Mechanical Surface Detection)
- Phantom: SAM v5.0 (B); Type: QD000P40CD; Serial: 1628

RHS/Touch_QPSK_RB 1/0_ch 40620/Area Scan (9x16x1): Measurement grid: dx=12mm, dy=12mm

[Info: Interpolated medium parameters used for SAR evaluation.](#)

Maximum value of SAR (measured) = 0.0697 W/kg

RHS/Touch_QPSK_RB 1/0_ch 40620/Zoom Scan (7x11x7)/Cube 0: Measurement grid: dx=5mm, dy=5mm, dz=5mm

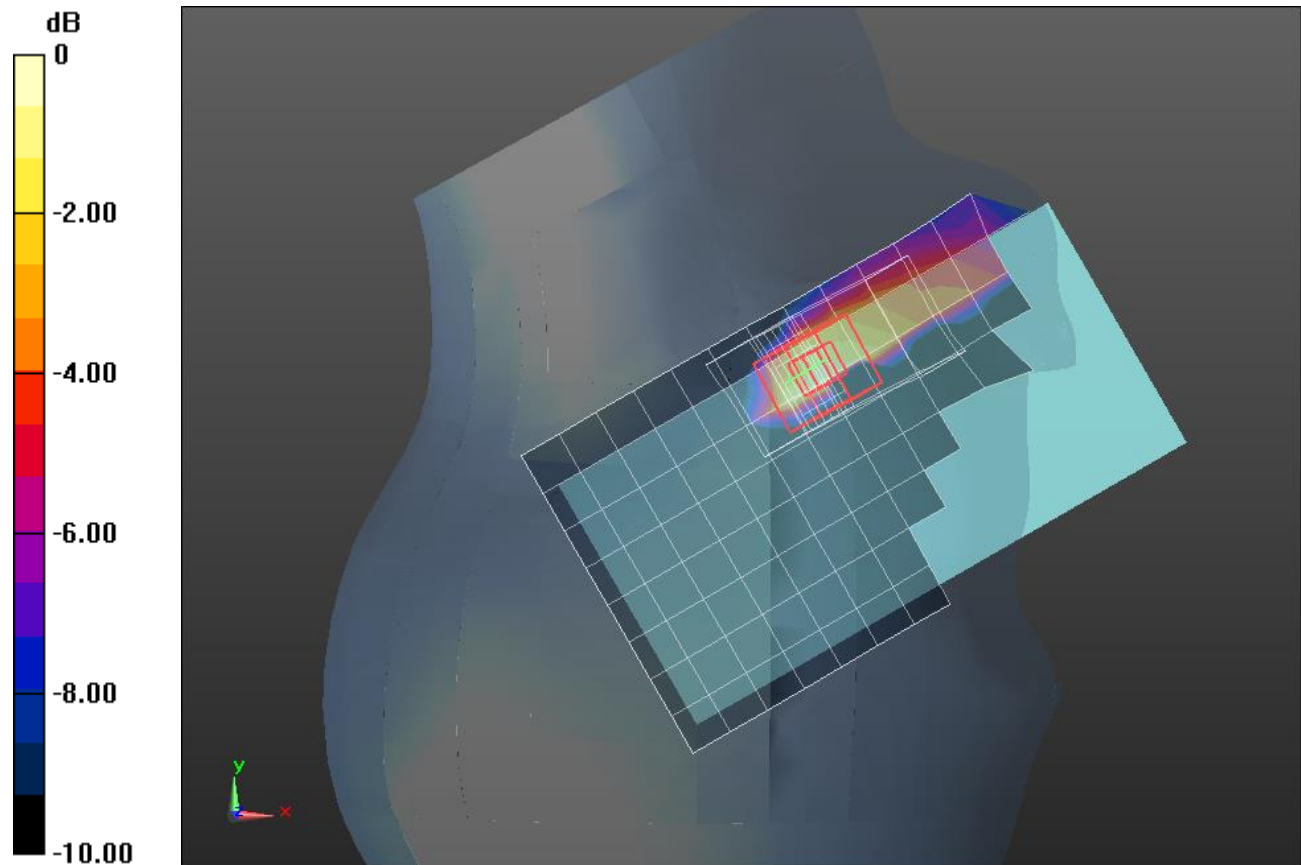
Reference Value = 6.010 V/m; Power Drift = -0.07 dB

Peak SAR (extrapolated) = 0.110 W/kg

SAR(1 g) = 0.056 W/kg; SAR(10 g) = 0.028 W/kg

[Info: Interpolated medium parameters used for SAR evaluation.](#)

Maximum value of SAR (measured) = 0.0772 W/kg



0 dB = 0.0772 W/kg = -11.12 dBW/kg

LTE Band 41

Frequency: 2593 MHz; Duty Cycle: 1:1.6; Room Ambient Temperature: 24.0°C; Liquid Temperature: 23.0°C
 Medium parameters used (interpolated): $f = 2593$ MHz; $\sigma = 2.093$ S/m; $\epsilon_r = 51.078$; $\rho = 1000$ kg/m³

DASY5 Configuration:

- Area Scan Setting: Find Secondary Maximum Within: 2.0 dB and with a peak SAR value greater than 0.0012W/kg
- Electronics: DAE4 Sn1357; Calibrated: 2/20/2015
- Probe: EX3DV4 - SN3901; ConvF(6.97, 6.97, 6.97); Calibrated: 1/27/2015;
- Sensor-Surface: 2.5mm (Mechanical Surface Detection)
- Phantom: SAM v5.0 (B); Type: QD000P40CD; Serial: 1628

Rear/QPSK_RB 1/0_ch 40620/Area Scan (9x17x1): Measurement grid: dx=12mm, dy=12mm

[Info: Interpolated medium parameters used for SAR evaluation.](#)

Maximum value of SAR (measured) = 0.474 W/kg

Rear/QPSK_RB 1/0_ch 40620/Zoom Scan (7x7x7)/Cube 0: Measurement grid: dx=5mm, dy=5mm, dz=5mm

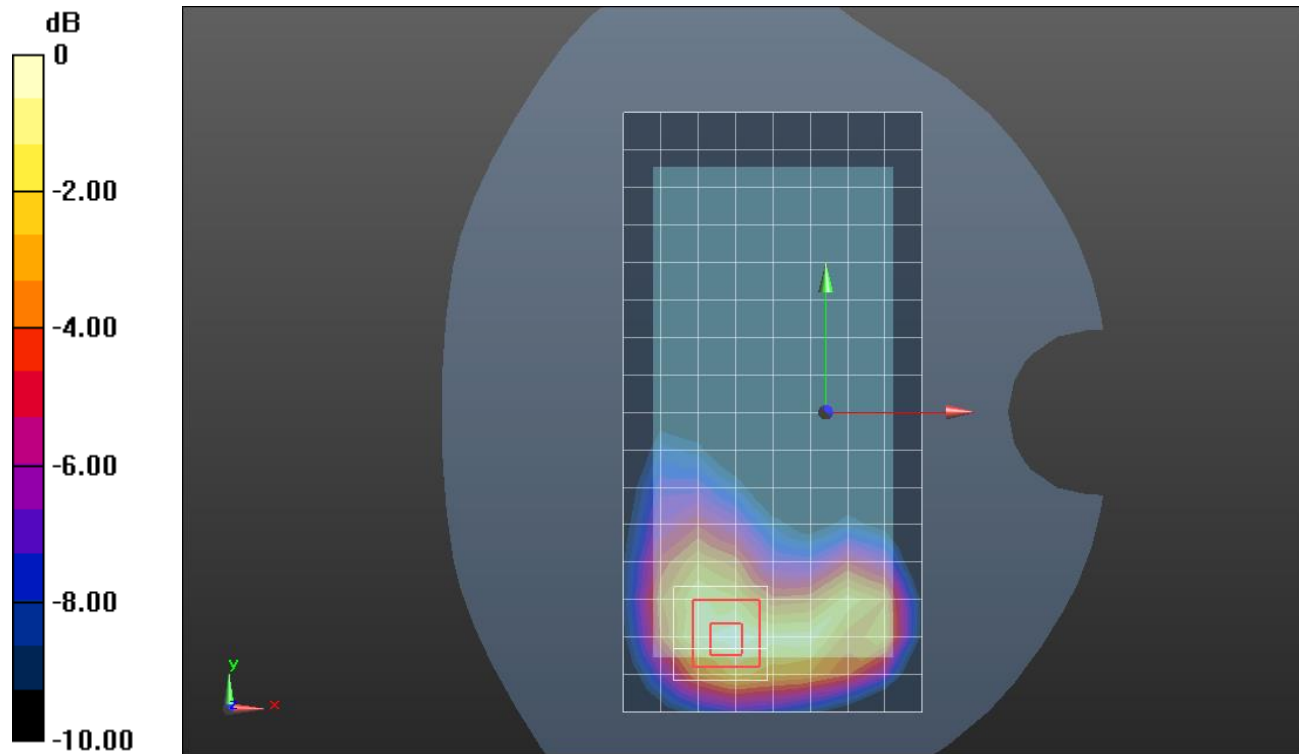
Reference Value = 15.17 V/m; Power Drift = -0.04 dB

Peak SAR (extrapolated) = 0.716 W/kg

SAR(1 g) = 0.366 W/kg; SAR(10 g) = 0.194 W/kg

[Info: Interpolated medium parameters used for SAR evaluation.](#)

Maximum value of SAR (measured) = 0.486 W/kg



0 dB = 0.486 W/kg = -3.13 dBW/kg

LTE Band 41

Frequency: 2593 MHz; Duty Cycle: 1:1.6; Room Ambient Temperature: 24.0°C; Liquid Temperature: 23.0°C
 Medium parameters used (interpolated): $f = 2593$ MHz; $\sigma = 2.093$ S/m; $\epsilon_r = 51.078$; $\rho = 1000$ kg/m³

DASY5 Configuration:

- Area Scan Setting: Find Secondary Maximum Within: 2.0 dB and with a peak SAR value greater than 0.0012W/kg
- Electronics: DAE4 Sn1357; Calibrated: 2/20/2015
- Probe: EX3DV4 - SN3901; ConvF(6.97, 6.97, 6.97); Calibrated: 1/27/2015;
- Sensor-Surface: 2.5mm (Mechanical Surface Detection)
- Phantom: SAM v5.0 (B); Type: QD000P40CD; Serial: 1628

Edge 3/QPSK_RB 1/0_ch 40620/Area Scan (6x10x1): Measurement grid: dx=12mm, dy=12mm

[Info: Interpolated medium parameters used for SAR evaluation.](#)

Maximum value of SAR (measured) = 0.804 W/kg

Edge 3/QPSK_RB 1/0_ch 40620/Zoom Scan (7x7x7)/Cube 0: Measurement grid: dx=5mm, dy=5mm, dz=5mm

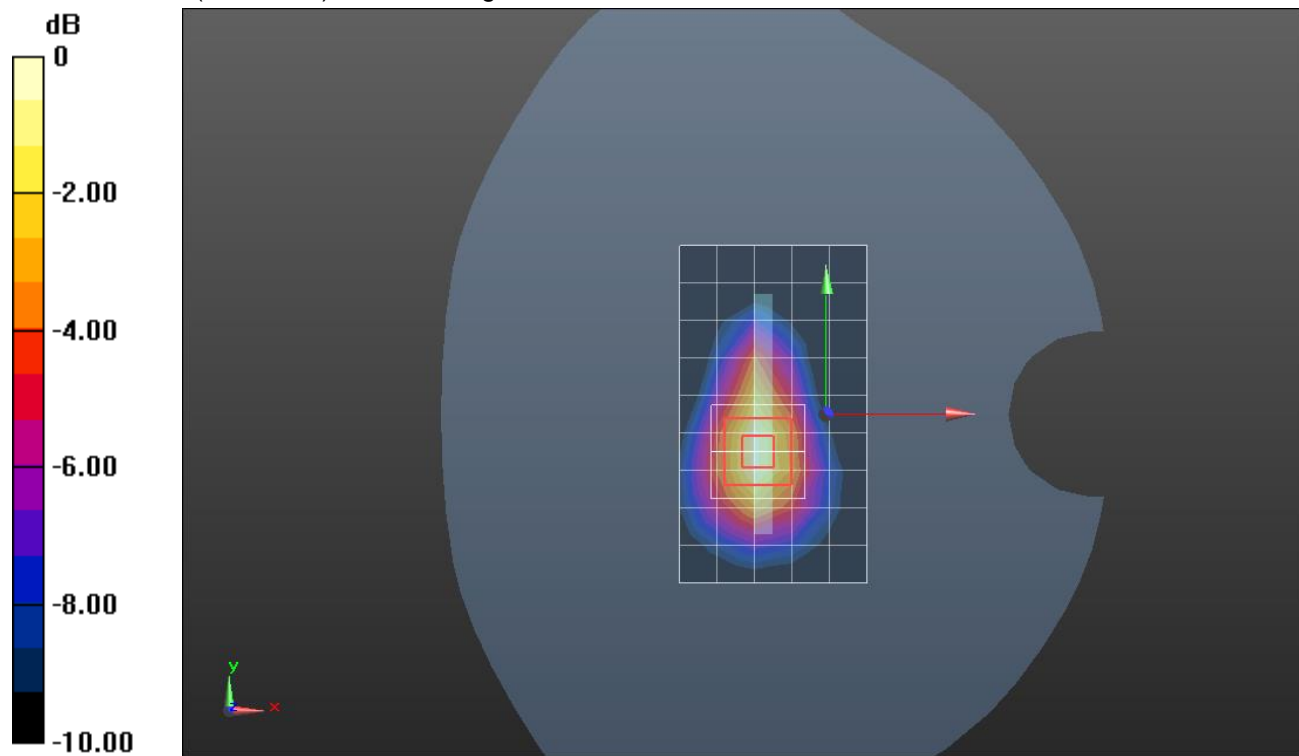
Reference Value = 19.58 V/m; Power Drift = -0.13 dB

Peak SAR (extrapolated) = 1.26 W/kg

SAR(1 g) = 0.625 W/kg; SAR(10 g) = 0.306 W/kg

[Info: Interpolated medium parameters used for SAR evaluation.](#)

Maximum value of SAR (measured) = 0.867 W/kg



0 dB = 0.867 W/kg = -0.62 dBW/kg

WiFi 2.4GHz

Frequency: 2462 MHz; Duty Cycle: 1:1; Room Ambient Temperature: 24.0°C; Liquid Temperature: 23.0°C
 Medium parameters used (interpolated): $f = 2462 \text{ MHz}$; $\sigma = 1.899 \text{ S/m}$; $\epsilon_r = 39.321$; $\rho = 1000 \text{ kg/m}^3$

DASY5 Configuration:

- Area Scan Setting: Find Secondary Maximum Within: 2.0 dB and with a peak SAR value greater than 0.0012W/kg
- Electronics: DAE4 Sn1377; Calibrated: 8/27/2014
- Probe: EX3DV4 - SN3989; ConvF(7.67, 7.67, 7.67); Calibrated: 3/17/2015;
- Sensor-Surface: 2.5mm (Mechanical Surface Detection (Locations From Previous Scan Used)), Sensor-Surface: 2.5mm (Mechanical Surface Detection)
- Phantom: SAM with CRP; Type: SAM;

RHS/Tilt_802.11b_ch 11/Area Scan (10x16x1): Measurement grid: dx=12mm, dy=12mm

[Info: Interpolated medium parameters used for SAR evaluation.](#)

Maximum value of SAR (measured) = 0.972 W/kg

RHS/Tilt_802.11b_ch 11/Zoom Scan (7x7x7)/Cube 0: Measurement grid: dx=5mm, dy=5mm, dz=5mm

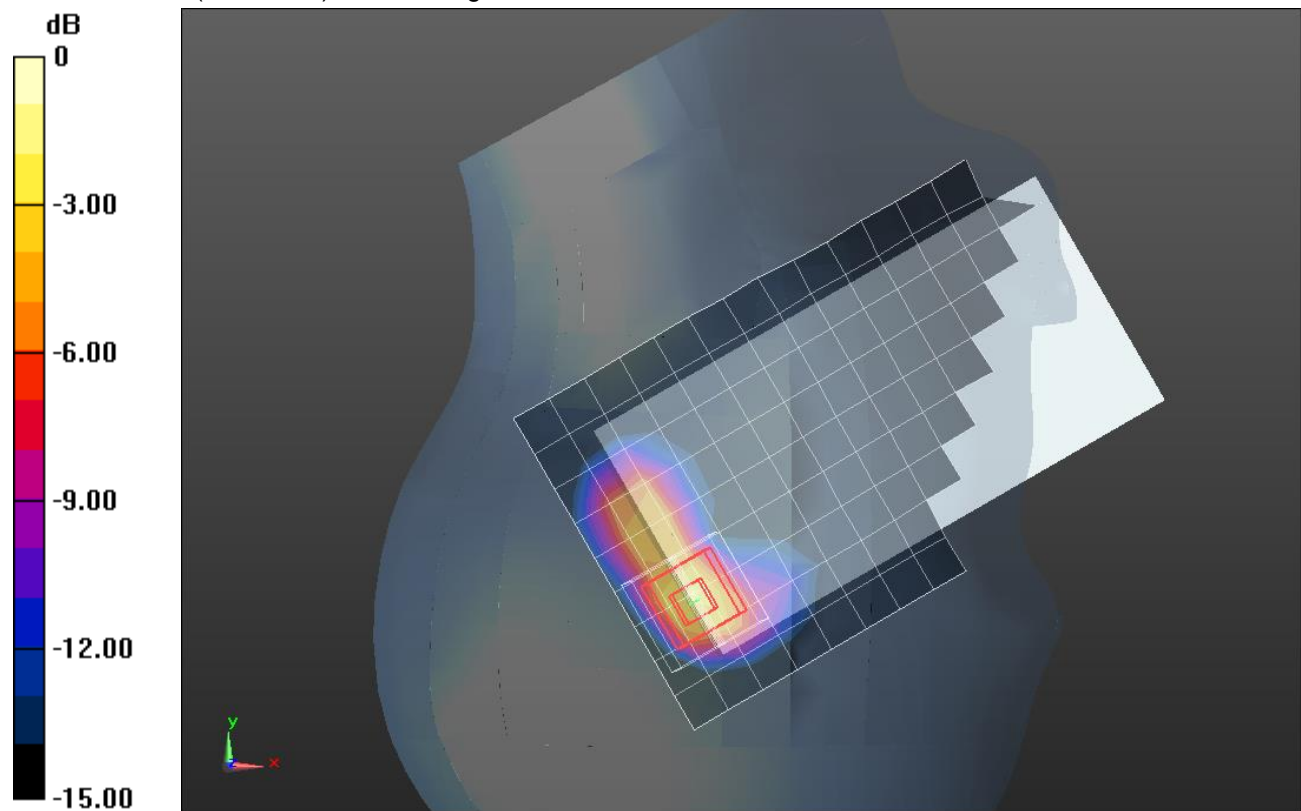
Reference Value = 20.20 V/m; Power Drift = -0.02 dB

Peak SAR (extrapolated) = 2.94 W/kg

SAR(1 g) = 1.04 W/kg; SAR(10 g) = 0.375 W/kg

[Info: Interpolated medium parameters used for SAR evaluation.](#)

Maximum value of SAR (measured) = 1.73 W/kg



0 dB = 1.73 W/kg = 2.38 dBW/kg

WiFi 2.4GHz

Frequency: 2462 MHz; Duty Cycle: 1:1; Room Ambient Temperature: 24.0°C; Liquid Temperature: 23.0°C
 Medium parameters used (interpolated): $f = 2462 \text{ MHz}$; $\sigma = 2.043 \text{ S/m}$; $\epsilon_r = 51.389$; $\rho = 1000 \text{ kg/m}^3$

DASY5 Configuration:

- Area Scan Setting: Find Secondary Maximum Within: 2.0 dB and with a peak SAR value greater than 0.0012W/kg
- Electronics: DAE4 Sn1377; Calibrated: 8/27/2014
- Probe: EX3DV4 - SN3989; ConvF(7.52, 7.52, 7.52); Calibrated: 3/17/2015;
- Sensor-Surface: 2.5mm (Mechanical Surface Detection)
- Phantom: ELI-B V5.0; Type: QDOVA001BB; Serial: S/n:1216

Edge 1/802.11b_ch 11/Area Scan (7x13x1): Measurement grid: dx=12mm, dy=12mm

[Info: Interpolated medium parameters used for SAR evaluation.](#)

Maximum value of SAR (measured) = 0.344 W/kg

Edge 1/802.11b_ch 11/Zoom Scan (7x7x7)/Cube 0: Measurement grid: dx=5mm, dy=5mm, dz=5mm

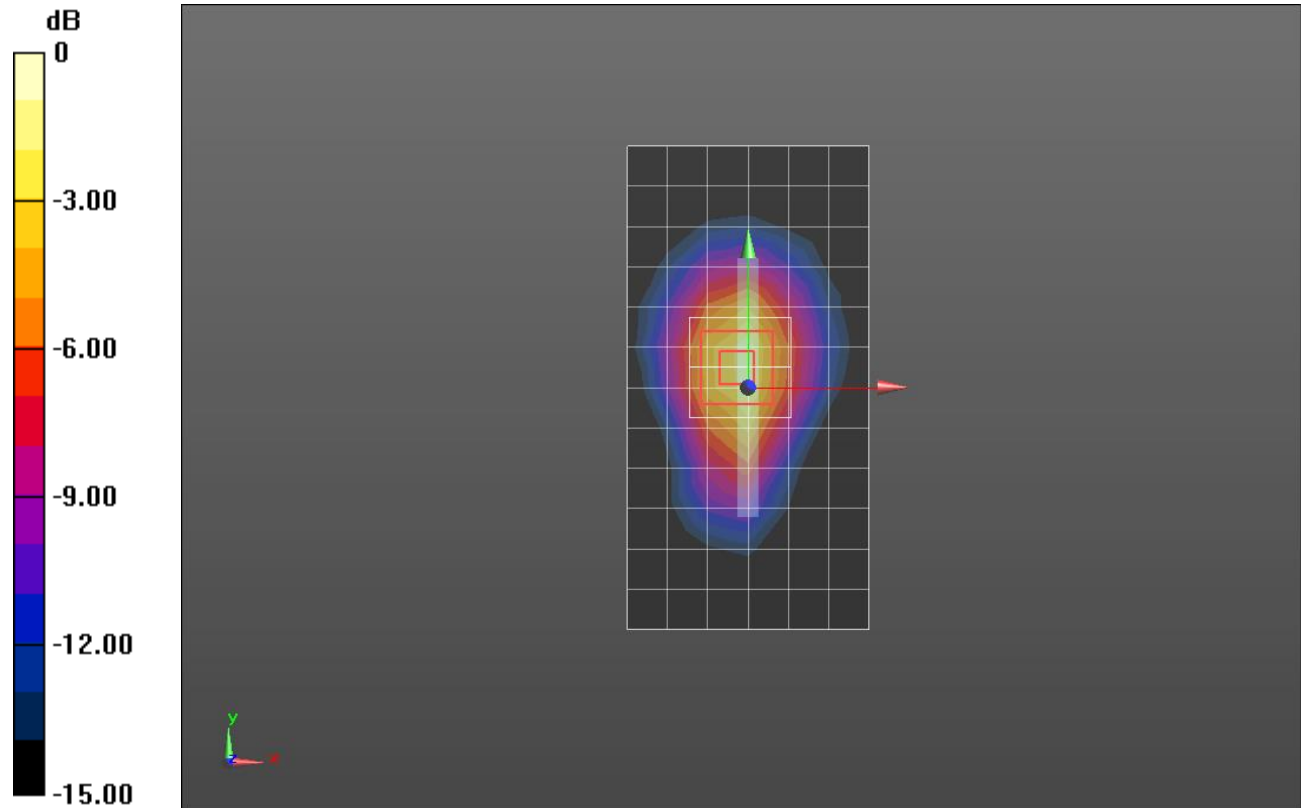
Reference Value = 14.06 V/m; Power Drift = 0.09 dB

Peak SAR (extrapolated) = 0.645 W/kg

SAR(1 g) = 0.330 W/kg; SAR(10 g) = 0.160 W/kg

[Info: Interpolated medium parameters used for SAR evaluation.](#)

Maximum value of SAR (measured) = 0.456 W/kg



0 dB = 0.456 W/kg = -3.41 dBW/kg

Wi-Fi 5GHz

Frequency: 5270 MHz; Duty Cycle: 1:1; Room Ambient Temperature: 24.0°C; Liquid Temperature: 23.0°C

Medium parameters used: $f = 5270 \text{ MHz}$; $\sigma = 4.717 \text{ S/m}$; $\epsilon_r = 36.828$; $\rho = 1000 \text{ kg/m}^3$

DASY5 Configuration:

- Area Scan Setting: Find Secondary Maximum Within: 2.0 dB and with a peak SAR value greater than 0.0012W/kg
- Electronics: DAE4 Sn1239; Calibrated: 4/16/2015
- Probe: EX3DV4 - SN3773; ConvF(4.76, 4.76, 4.76); Calibrated: 4/22/2015;
- Sensor-Surface: 2mm (Mechanical Surface Detection (Locations From Previous Scan Used)), Sensor-Surface: 2mm (Mechanical Surface Detection)
- Phantom: TWIN SAM v5.0; Type: QD000P40CD; Serial: TP:1829

RHS/Touch_802.11n HT40_Ch 54/Area Scan (10x19x1): Measurement grid: dx=10mm, dy=10mm

Maximum value of SAR (measured) = 0.538 W/kg

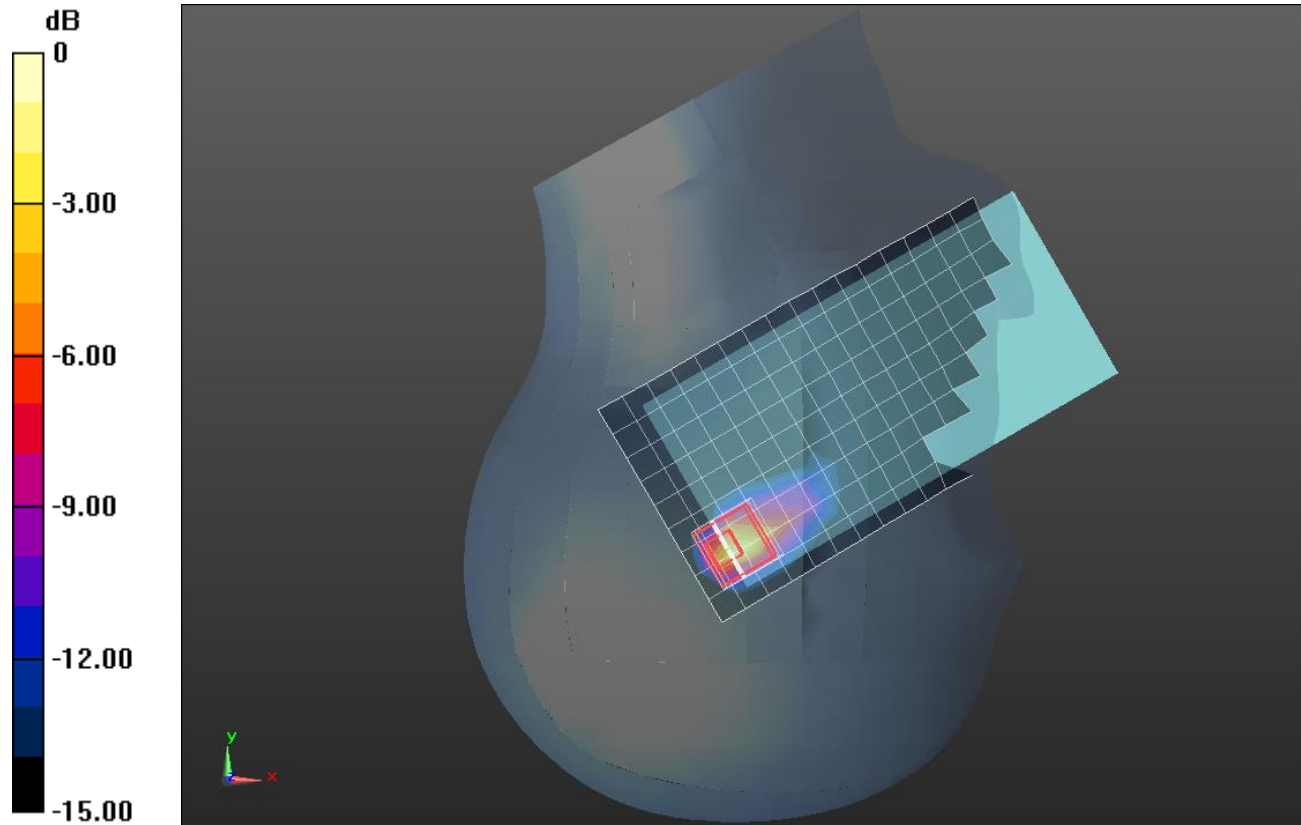
RHS/Touch_802.11n HT40_Ch 54/Zoom Scan (7x7x12)/Cube 0: Measurement grid: dx=4mm, dy=4mm, dz=2mm

Reference Value = 10.33 V/m; Power Drift = 0.00 dB

Peak SAR (extrapolated) = 1.73 W/kg

SAR(1 g) = 0.336 W/kg; SAR(10 g) = 0.083 W/kg

Maximum value of SAR (measured) = 0.727 W/kg



0 dB = 0.727 W/kg = -1.38 dBW/kg

Wi-Fi 5GHz

Frequency: 5270 MHz; Duty Cycle: 1:1; Room Ambient Temperature: 24.0°C; Liquid Temperature: 23.0°C

Medium parameters used: $f = 5270 \text{ MHz}$; $\sigma = 5.477 \text{ S/m}$; $\epsilon_r = 47.082$; $\rho = 1000 \text{ kg/m}^3$

DASY5 Configuration:

- Area Scan Setting: Find Secondary Maximum Within: 2.0 dB and with a peak SAR value greater than 0.0012W/kg
- Electronics: DAE4 Sn1239; Calibrated: 4/16/2015
- Probe: EX3DV4 - SN3773; ConvF(4.22, 4.22, 4.22); Calibrated: 4/22/2015;
- Sensor-Surface: 2mm (Mechanical Surface Detection)
- Phantom: ELI v5.0 (A); Type: QDOVA001BB; Serial: 1213

Rear/802.11n (HT40)_ch 54/Area Scan (11x20x1): Measurement grid: dx=10mm, dy=10mm

Maximum value of SAR (measured) = 0.0411 W/kg

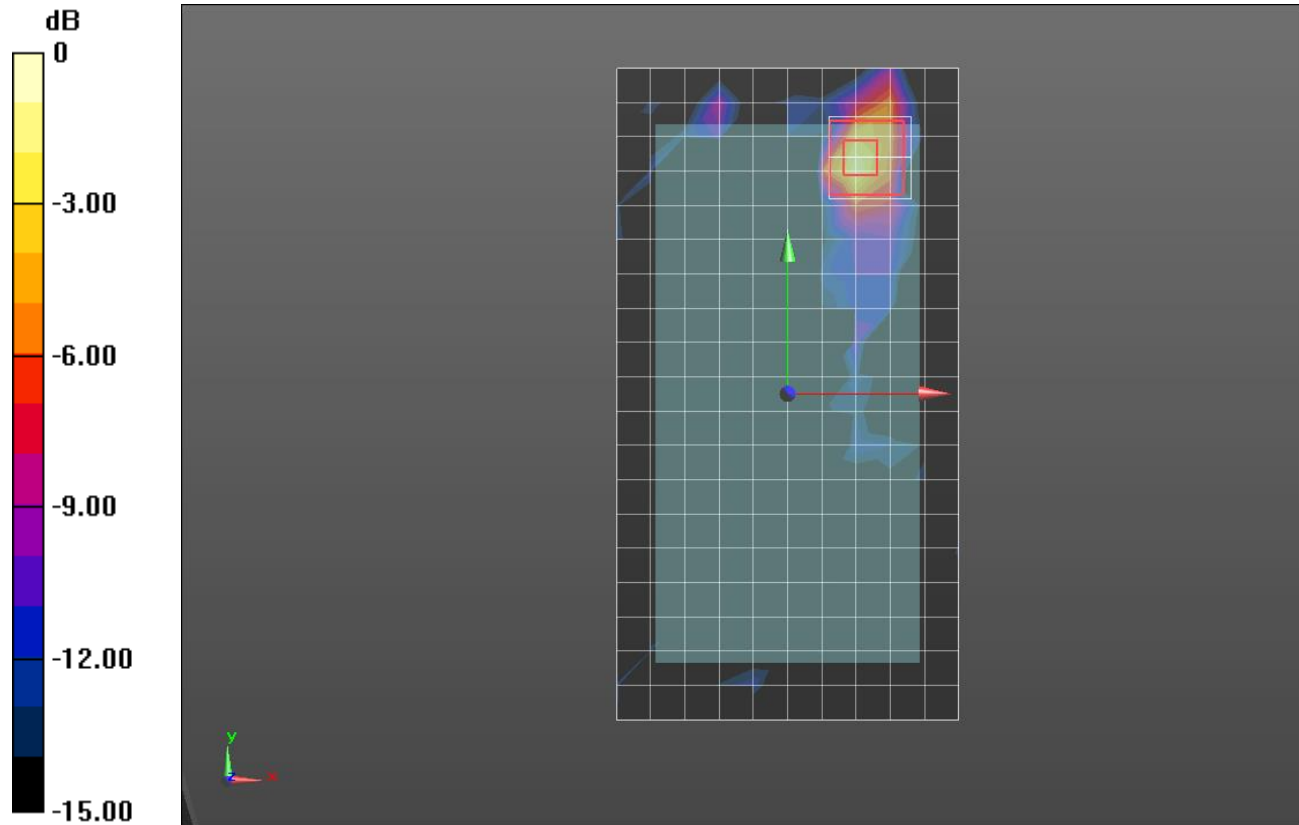
Rear/802.11n (HT40)_ch 54/Zoom Scan (7x7x12)/Cube 0: Measurement grid: dx=4mm, dy=4mm, dz=2mm

Reference Value = 2.785 V/m; Power Drift = 0.10 dB

Peak SAR (extrapolated) = 0.227 W/kg

SAR(1 g) = 0.024 W/kg; SAR(10 g) = 0.00567 W/kg

Maximum value of SAR (measured) = 0.0522 W/kg



0 dB = 0.0522 W/kg = -12.82 dBW/kg

Wi-Fi 5GHz

Frequency: 5590 MHz; Duty Cycle: 1:1; Room Ambient Temperature: 24.0°C; Liquid Temperature: 23.0°C

Medium parameters used: $f = 5590 \text{ MHz}$; $\sigma = 5.034 \text{ S/m}$; $\epsilon_r = 36.379$; $\rho = 1000 \text{ kg/m}^3$

DASY5 Configuration:

- Area Scan Setting: Find Secondary Maximum Within: 2.0 dB and with a peak SAR value greater than 0.0012W/kg
- Electronics: DAE4 Sn1239; Calibrated: 4/16/2015
- Probe: EX3DV4 - SN3773; ConvF(4.46, 4.46, 4.46); Calibrated: 4/22/2015;
- Sensor-Surface: 2mm (Mechanical Surface Detection)
- Phantom: TWIN SAM v5.0; Type: QD000P40CD; Serial: TP:1829

RHS/Touch_802.11n HT40_Ch 118/Area Scan (10x19x1): Measurement grid: dx=10mm, dy=10mm

Maximum value of SAR (measured) = 0.613 W/kg

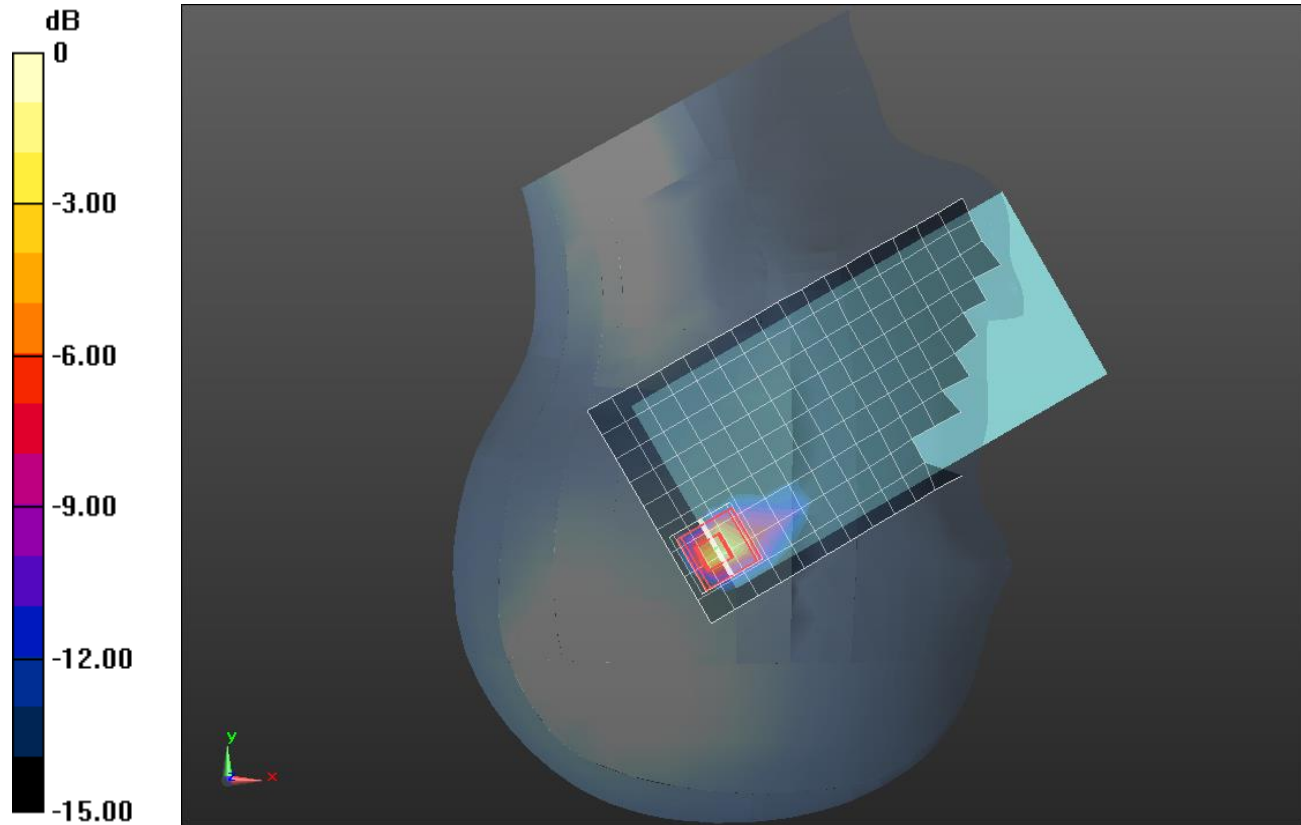
RHS/Touch_802.11n HT40_Ch 118/Zoom Scan (7x7x12)/Cube 0: Measurement grid: dx=4mm, dy=4mm, dz=2mm

Reference Value = 11.23 V/m; Power Drift = 0.05 dB

Peak SAR (extrapolated) = 2.45 W/kg

SAR(1 g) = 0.469 W/kg; SAR(10 g) = 0.112 W/kg

Maximum value of SAR (measured) = 1.04 W/kg



0 dB = 1.04 W/kg = 0.17 dBW/kg

Wi-Fi 5GHz

Frequency: 5590 MHz; Duty Cycle: 1:1; Room Ambient Temperature: 24.0°C; Liquid Temperature: 23.0°C

Medium parameters used: $f = 5590 \text{ MHz}$; $\sigma = 5.905 \text{ S/m}$; $\epsilon_r = 46.502$; $\rho = 1000 \text{ kg/m}^3$

DASY5 Configuration:

- Area Scan Setting: Find Secondary Maximum Within: 2.0 dB and with a peak SAR value greater than 0.0012W/kg
- Electronics: DAE4 Sn1239; Calibrated: 4/16/2015
- Probe: EX3DV4 - SN3773; ConvF(3.71, 3.71, 3.71); Calibrated: 4/22/2015;
- Sensor-Surface: 2mm (Mechanical Surface Detection)
- Phantom: ELI v5.0 (A); Type: QDOVA001BB; Serial: 1213

Rear/802.11n (HT40)_ch 118/Area Scan (11x20x1): Measurement grid: dx=10mm, dy=10mm

Maximum value of SAR (measured) = 0.117 W/kg

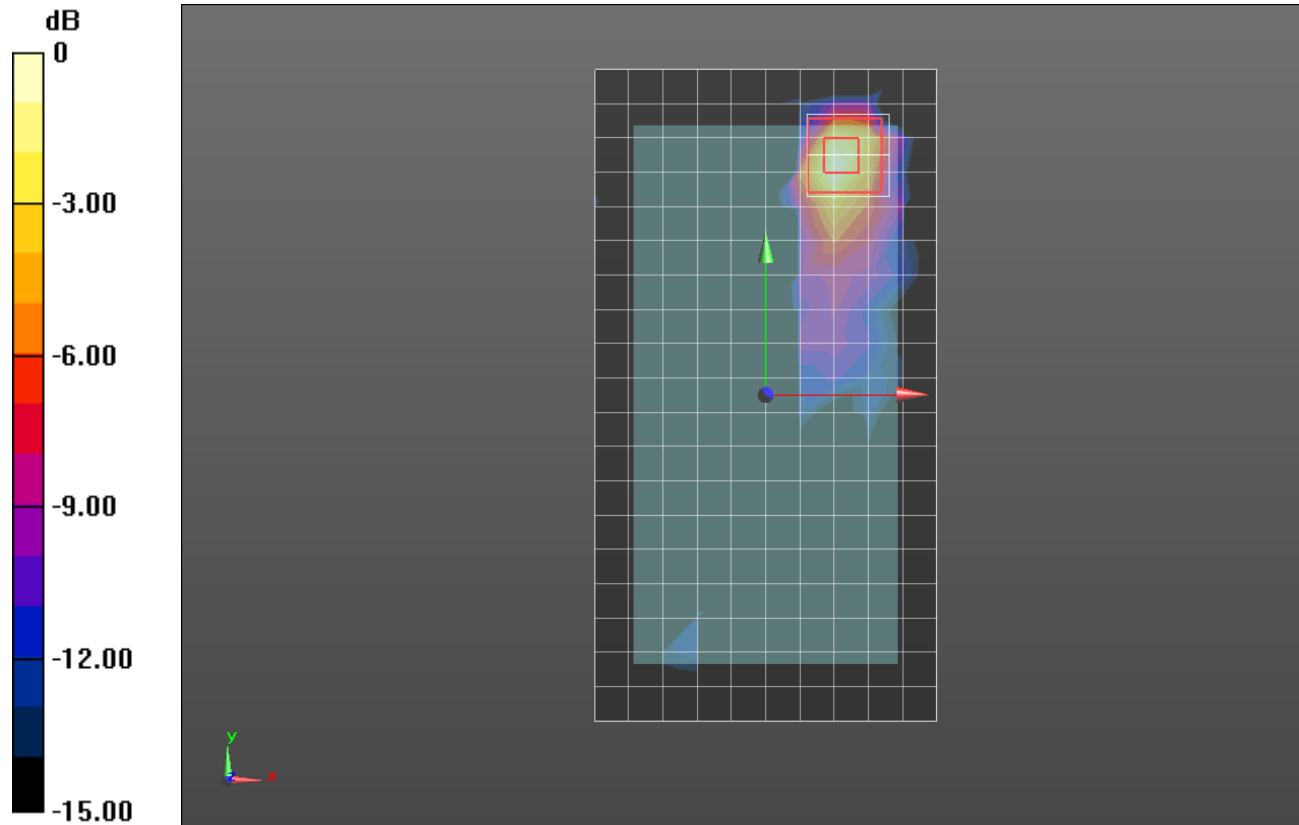
Rear/802.11n (HT40)_ch 118/Zoom Scan (7x7x12)/Cube 0: Measurement grid: dx=4mm, dy=4mm, dz=2mm

Reference Value = 3.774 V/m; Power Drift = 0.15 dB

Peak SAR (extrapolated) = 0.214 W/kg

SAR(1 g) = 0.048 W/kg; SAR(10 g) = 0.013 W/kg

Maximum value of SAR (measured) = 0.111 W/kg



0 dB = 0.111 W/kg = -9.55 dBW/kg

Wi-Fi 5GHz

Frequency: 5755 MHz; Duty Cycle: 1:1; Room Ambient Temperature: 24.0°C; Liquid Temperature: 23.0°C

Medium parameters used: $f = 5755 \text{ MHz}$; $\sigma = 5.213 \text{ S/m}$; $\epsilon_r = 35.95$; $\rho = 1000 \text{ kg/m}^3$

DASY5 Configuration:

- Area Scan Setting: Find Secondary Maximum Within: 2.0 dB and with a peak SAR value greater than 0.0012W/kg
- Electronics: DAE4 Sn1239; Calibrated: 4/16/2015
- Probe: EX3DV4 - SN3773; ConvF(4.63, 4.63, 4.63); Calibrated: 4/22/2015;
- Sensor-Surface: 2mm (Mechanical Surface Detection (Locations From Previous Scan Used)), Sensor-Surface: 2mm (Mechanical Surface Detection)
- Phantom: TWIN SAM v5.0; Type: QD000P40CD; Serial: TP:1829

RHS/Touch_802.11n HT40_Ch 151/Area Scan (10x19x1): Measurement grid: dx=10mm, dy=10mm

Maximum value of SAR (measured) = 0.673 W/kg

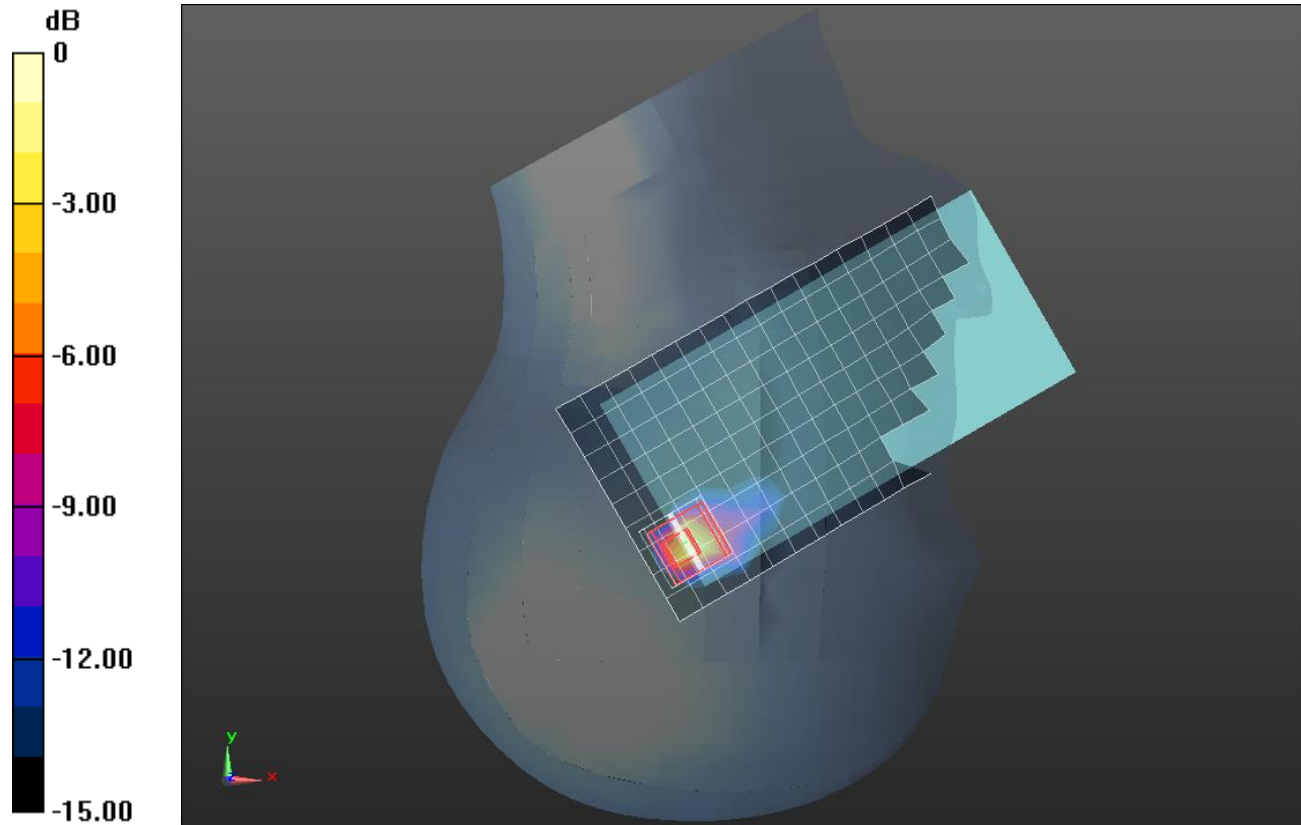
RHS/Touch_802.11n HT40_Ch 151/Zoom Scan (7x7x12)/Cube 0: Measurement grid: dx=4mm, dy=4mm, dz=2mm

Reference Value = 11.08 V/m; Power Drift = 0.03 dB

Peak SAR (extrapolated) = 2.73 W/kg

SAR(1 g) = 0.496 W/kg; SAR(10 g) = 0.114 W/kg

Maximum value of SAR (measured) = 1.02 W/kg



0 dB = 1.02 W/kg = 0.09 dBW/kg

Wi-Fi 5GHz

Frequency: 5755 MHz; Duty Cycle: 1:1; Room Ambient Temperature: 24.0°C; Liquid Temperature: 23.0°C

Medium parameters used: $f = 5755 \text{ MHz}$; $\sigma = 6.152 \text{ S/m}$; $\epsilon_r = 46.067$; $\rho = 1000 \text{ kg/m}^3$

DASY5 Configuration:

- Area Scan Setting: Find Secondary Maximum Within: 2.0 dB and with a peak SAR value greater than 0.0012W/kg
- Electronics: DAE4 Sn1239; Calibrated: 4/16/2015
- Probe: EX3DV4 - SN3773; ConvF(3.92, 3.92, 3.92); Calibrated: 4/22/2015;
- Sensor-Surface: 2mm (Mechanical Surface Detection)
- Phantom: ELI v5.0 (A); Type: QDOVA001BB; Serial: 1213

Rear/802.11n (HT40)_ch 151/Area Scan (11x20x1): Measurement grid: dx=10mm, dy=10mm

Maximum value of SAR (measured) = 0.165 W/kg

Rear/802.11n (HT40)_ch 151/Zoom Scan (7x7x12)/Cube 0: Measurement grid: dx=4mm, dy=4mm,

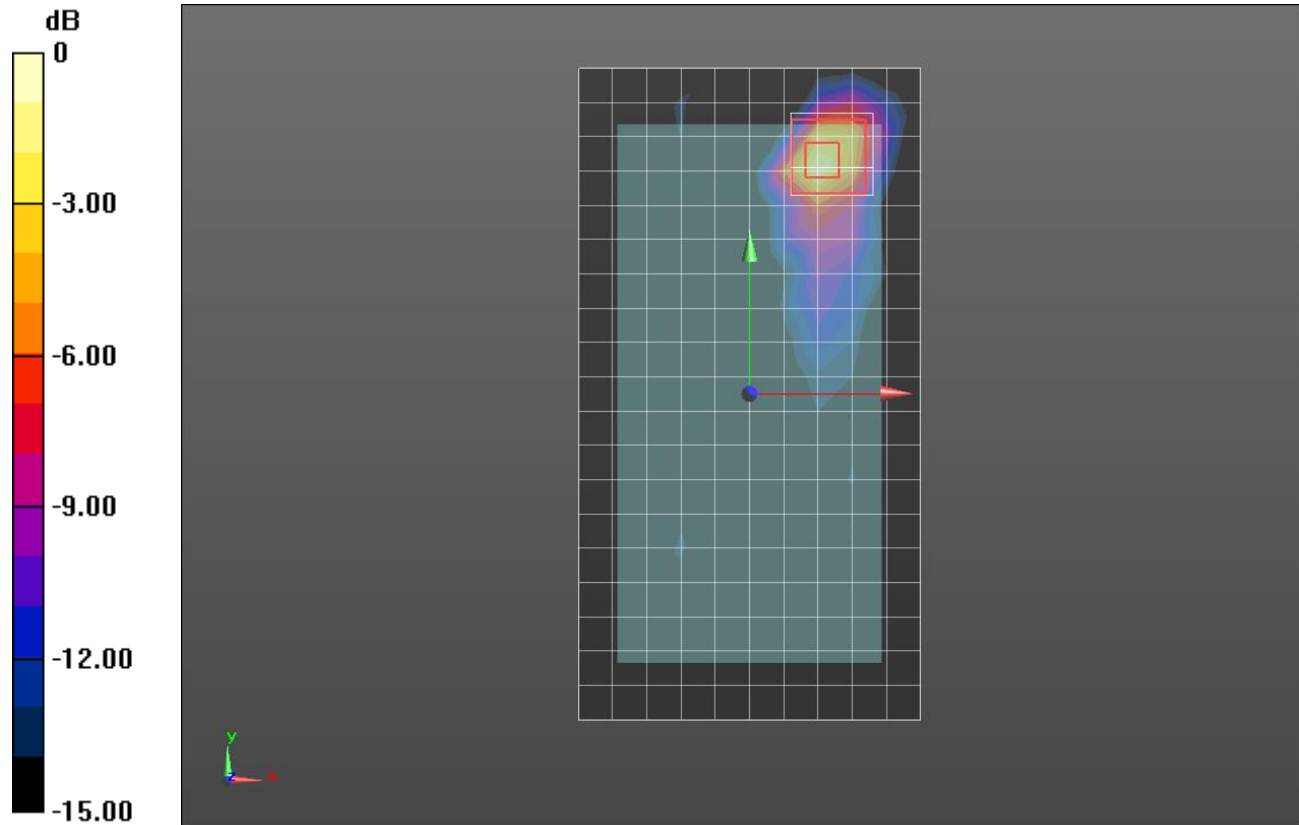
dz=2mm

Reference Value = 5.327 V/m; Power Drift = -0.04 dB

Peak SAR (extrapolated) = 0.377 W/kg

SAR(1 g) = 0.089 W/kg; SAR(10 g) = 0.024 W/kg

Maximum value of SAR (measured) = 0.193 W/kg



0 dB = 0.193 W/kg = -7.14 dBW/kg

Wi-Fi 5GHz

Frequency: 5755 MHz; Duty Cycle: 1:1; Room Ambient Temperature: 24.0°C; Liquid Temperature: 23.0°C

Medium parameters used: $f = 5755 \text{ MHz}$; $\sigma = 5.934 \text{ S/m}$; $\epsilon_r = 47.318$; $\rho = 1000 \text{ kg/m}^3$

DASY5 Configuration:

- Area Scan Setting: Find Secondary Maximum Within: 2.0 dB and with a peak SAR value greater than 0.0012W/kg
- Electronics: DAE4 Sn1472; Calibrated: 3/5/2015
- Probe: EX3DV4 - SN7335; ConvF(4.07, 4.07, 4.07); Calibrated: 3/13/2015;
- Sensor-Surface: 2mm (Mechanical Surface Detection)
- Phantom: ELI v5.0 B; Type: QDOVA002AA; Serial: 1248

Rear/802.11n_HT40_ch 151/Area Scan (10x21x1): Measurement grid: dx=10mm, dy=10mm

Maximum value of SAR (measured) = 0.912 W/kg

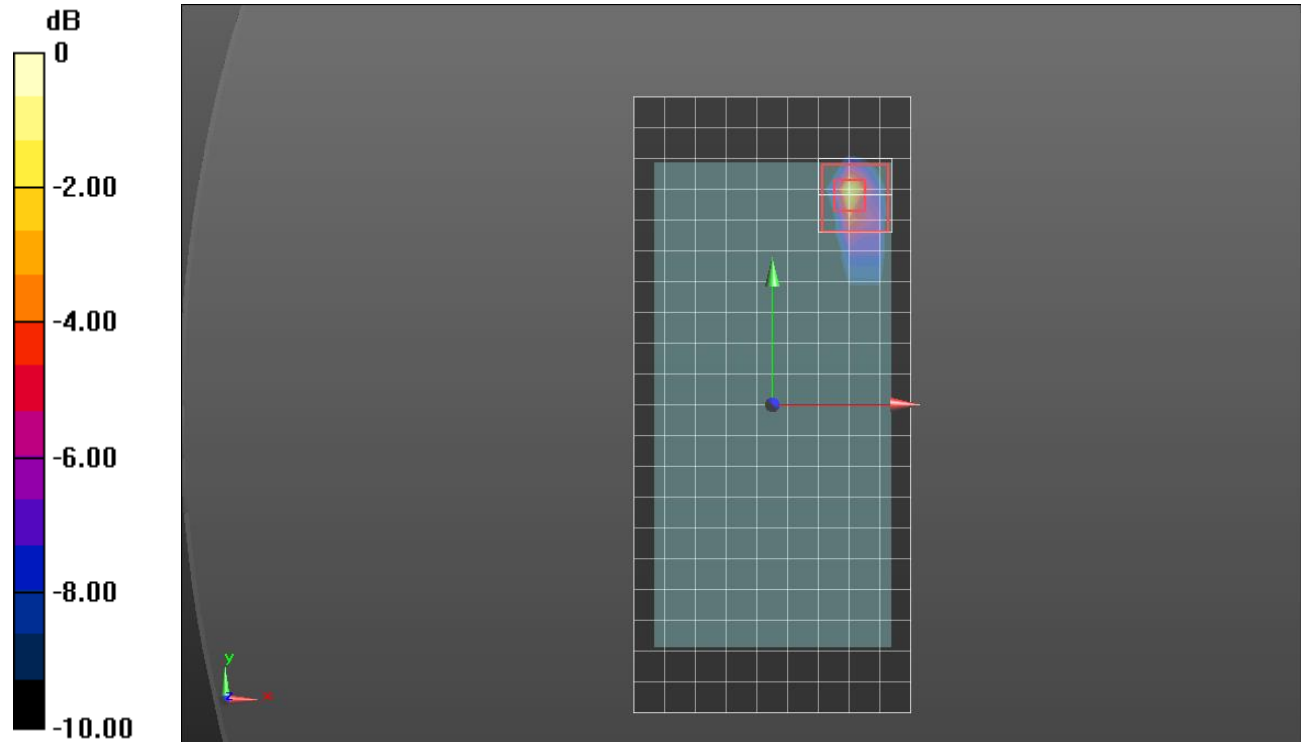
Rear/802.11n_HT40_ch 151/Zoom Scan (7x7x12)/Cube 0: Measurement grid: dx=4mm, dy=4mm, dz=2mm

Reference Value = 13.834 V/m; Power Drift = -0.14 dB

Peak SAR (extrapolated) = 2.72 W/kg

SAR(1 g) = 0.537 W/kg; SAR(10 g) = 0.139 W/kg

Maximum value of SAR (measured) = 1.17 W/kg



0 dB = 1.17 W/kg = 0.68 dBW/kg