

PCTEST ENGINEERING LABORATORY, INC.

DUT: Dipole 835 MHz; Type: D835V2; Serial: 4d026

Communication System: CW; Frequency: 835 MHz; Duty Cycle: 1:1

Medium: 835 Brain ($\sigma = 0.87$ mho/m, $\epsilon_r = 39.82$, $\rho = 1000$ kg/m³)

Phantom section: Flat Section

Test Date: 03-13-2007; Ambient Temp: 23.5 C Tissue Temp: 21.6 C

Probe: EX3DV4 - SN3589; ConvF(8.36, 8.36, 8.36); Calibrated: 7/14/2006

Sensor-Surface: 3mm (Mechanical Surface Detection)

Electronics: DAE4 Sn704; Calibrated: 6/1/2006

Phantom: SAM Main; Type: SAM 4.0; Serial: TP:1197

Measurement SW: DASY4, V4.7 Build 53; Postprocessing SW: SEMCAD, V1.8 Build 172

835MHz Dipole Validation

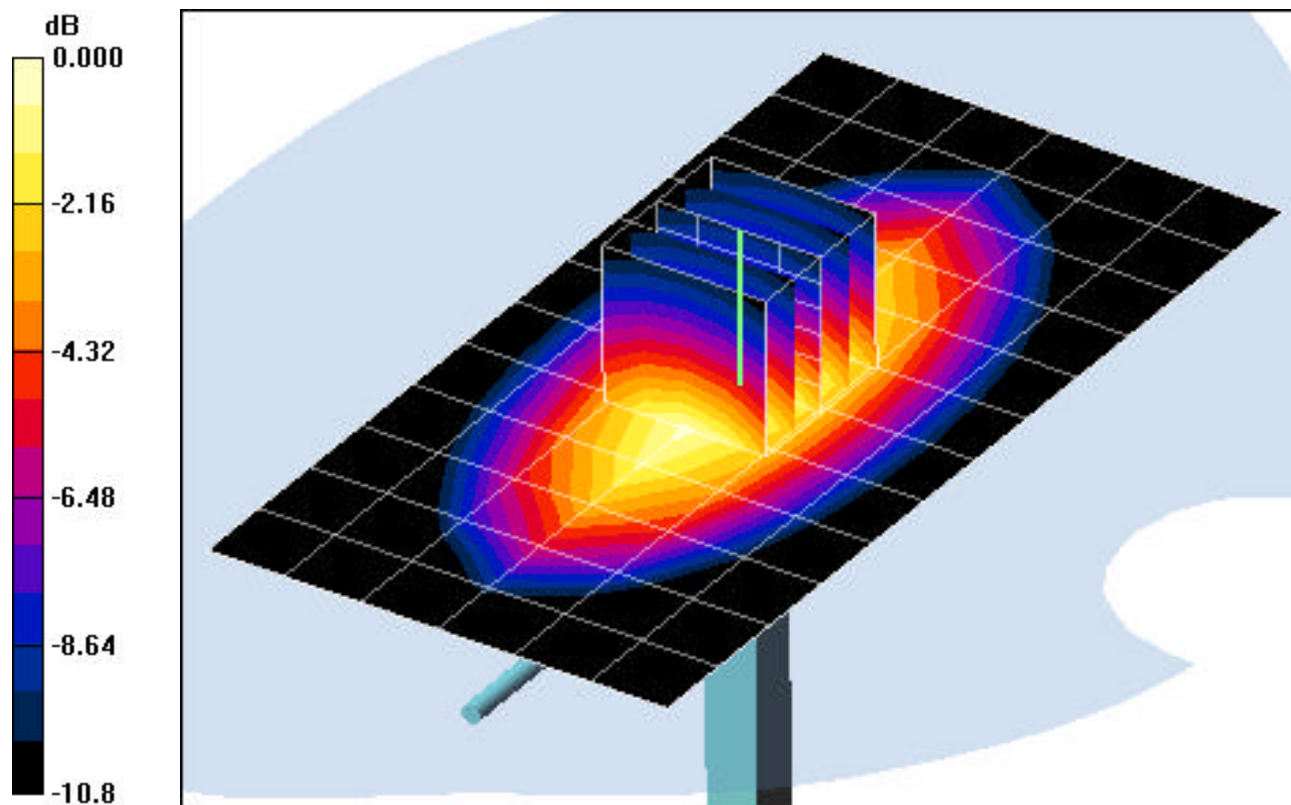
Area Scan (7x13x1): Measurement grid: dx=15mm, dy=15mm

Zoom Scan (5x5x7)/Cube 0: Measurement grid: dx=8mm, dy=8mm, dz=5mm

Input Power = 24.0 dBm (250 mW)

SAR(1 g) = 2.37 mW/g; SAR(10 g) = 1.62 mW/g

Target SAR(1g) = 2.25 mW/g; Deviation = + 5.22 %



0 dB = 2.78mW/g

PCTEST ENGINEERING LABORATORY, INC.

DUT: Dipole 1900 MHz; Type: D1900V2; Serial: 5d080

Communication System: CW; Frequency: 1900 MHz; Duty Cycle: 1:1

Medium: 1900 Brain ($\sigma = 1.45$ mho/m, $\epsilon_r = 38.60$, $\rho = 1000$ kg/m³)

Phantom section: Flat Section

Test Date: 03-14-2007; Ambient Temp: 23.2 C Tissue Temp: 21.3 C

Probe: EX3DV4 - SN3589; ConvF(7.11, 7.11, 7.11); Calibrated: 7/14/2006

Sensor-Surface: 3mm (Mechanical Surface Detection)

Electronics: DAE4 Sn704; Calibrated: 6/1/2006

Phantom: SAM Main; Type: SAM 4.0; Serial: TP:1197

Measurement SW: DASY4, V4.7 Build 53; Postprocessing SW: SEMCAD, V1.8 Build 172

1900MHz Dipole Validation

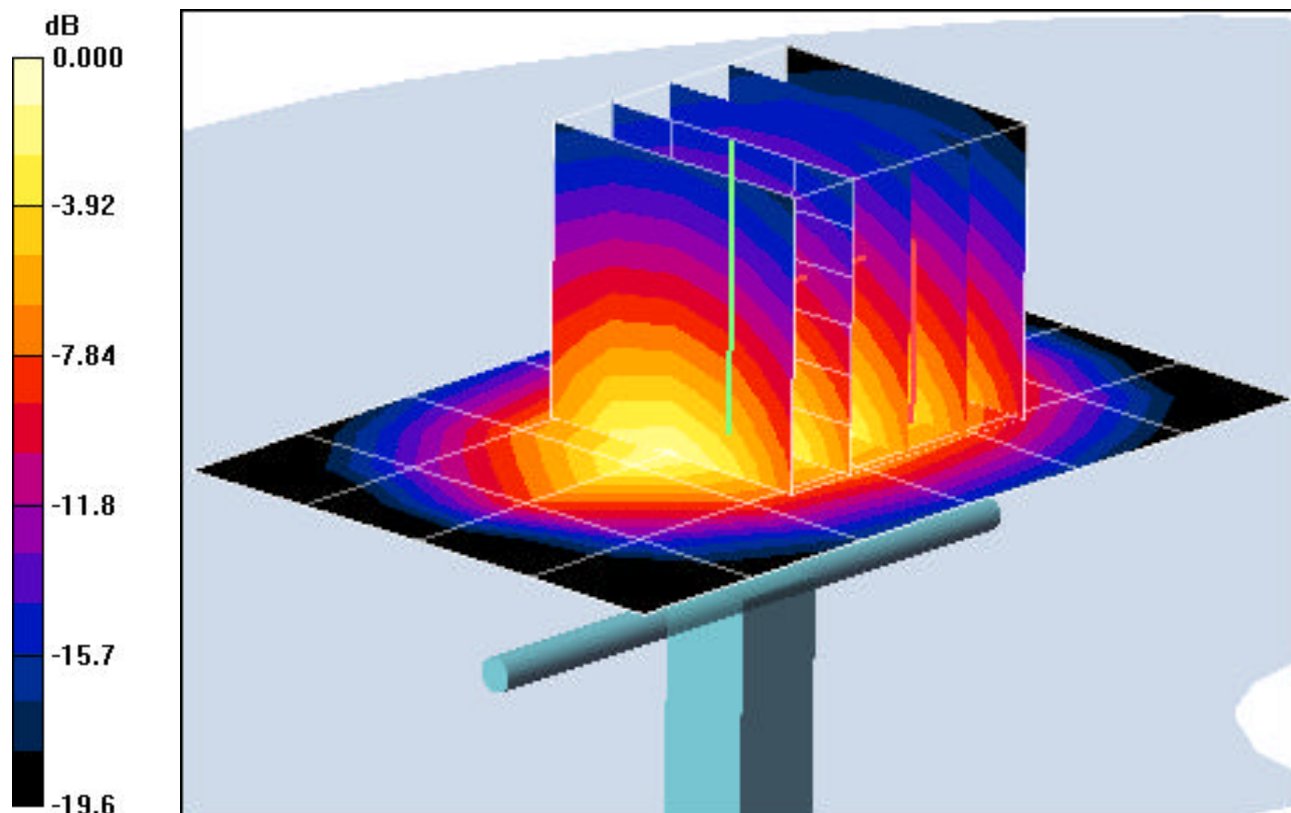
Area Scan (5x7x1): Measurement grid: dx=15mm, dy=15mm

Zoom Scan (5x5x7)/Cube 0: Measurement grid: dx=8mm, dy=8mm, dz=5mm

Input Power = 20.0 dBm (100 mW)

SAR(1 g) = 3.93 mW/g; SAR(10 g) = 2.16 mW/g

Target SAR(1g) = 3.77 mW/g; Deviation = + 4.24 %



0 dB = 4.85mW/g