

835MHz Brain Dipole Validation

SAM Phantom; FlatSection; Probe: ET3DV6 - SN1551 -- ConvF(6.80,6.80,6.80)

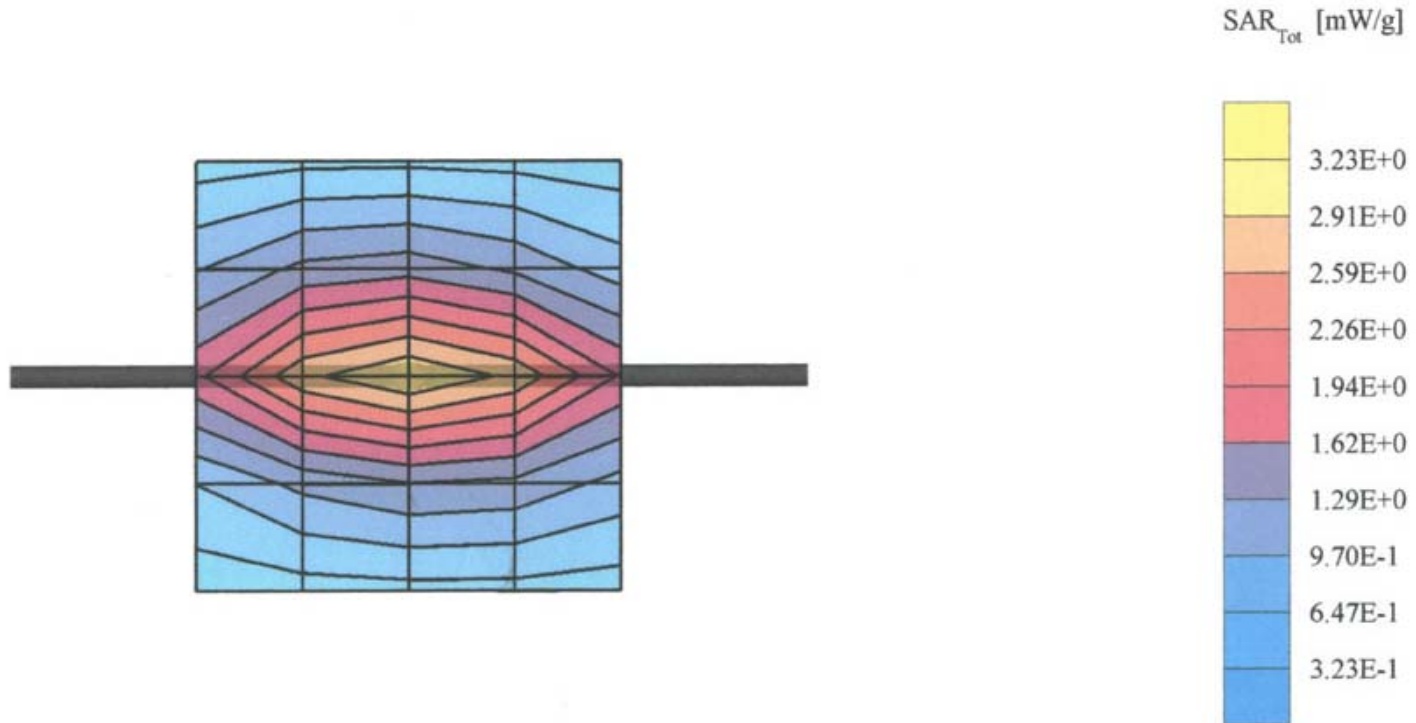
Head 835 MHz: $\sigma = 0.92$ mho/m $\epsilon_r = 43.6$ $\rho = 1.00$ g/cm³; Crest factor: 1.0

SAR (1g): 2.49 mW/g

835MHz Brain Dipole Validation (D835V2 S/N:451)

Frequency: 835 MHz; Antenna Input Power: 250 [mW]

Brain Tissue Simulating Liquid [06/18/2002]



835MHz Muscle Dipole Validation

SAM Phantom; FlatSection; Probe: ET3DV6 - SN1551 -- ConvF(6.60,6.60,6.60)

Body 835 MHz: $\sigma = 0.93$ mho/m $\epsilon_r = 56.9$ $\rho = 1.00$ g/cm³; Crest factor: 1.0

SAR (1g): 2.52 mW/g

835MHz Muscle Dipole Validation (D835V2 S/N:451)

Frequency: 835 MHz; Antenna Input Power: 250 [mW]

Muscle Tissue Simulating Liquid [06/24/2002]

