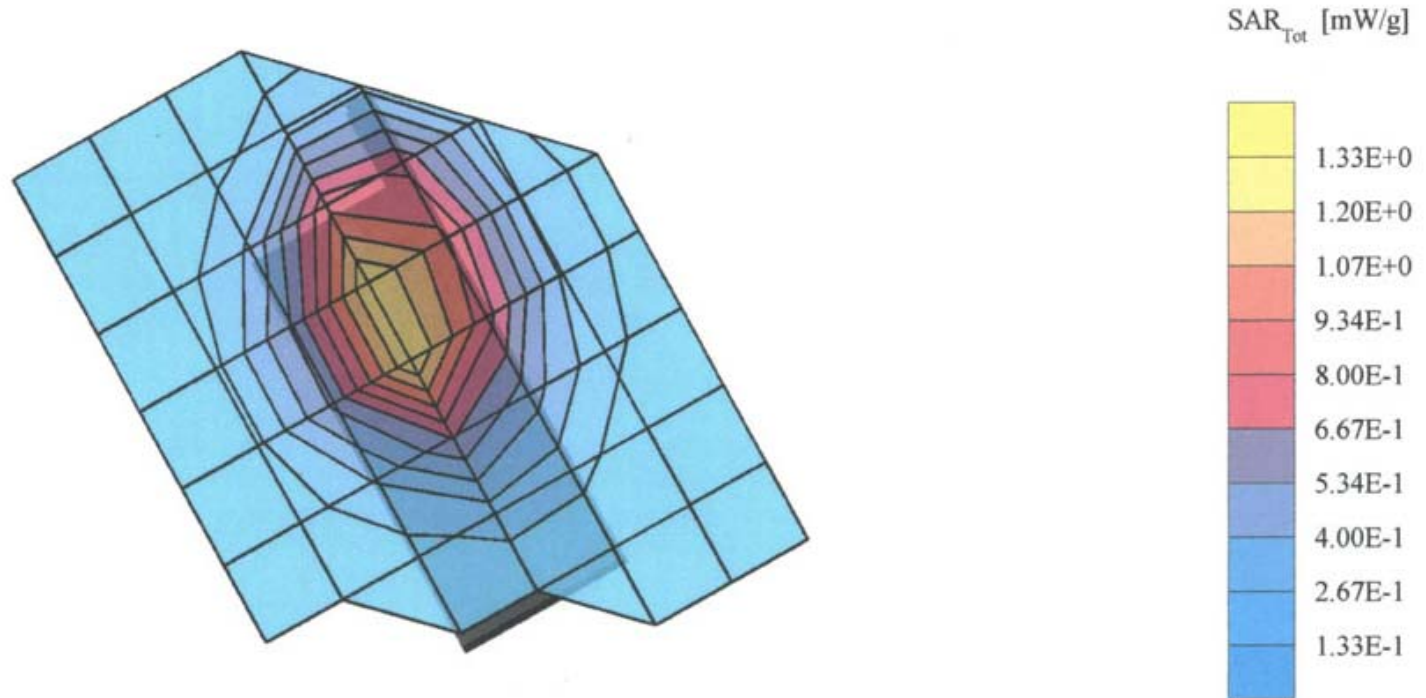


# SAMSUNG FCC ID: A3LSCHN182 -- 835MHz CDMA Head SAR

SAM Phantom; Right Hand Section; Probe: ET3DV6 - SN1551 -- ConvF(6.80,6.80,6.80)  
Head 835 MHz:  $\sigma = 0.92$  mho/m  $\epsilon_r = 43.6$   $\rho = 1.00$  g/cm<sup>3</sup>; Antenna Position- In; Crest factor: 1.0  
SAR (1g): 1.28 mW/g

SAMSUNG Single-Mode Cellular Phone Model: SCH-N182  
CDMA Mode, Ch.1013 [824.7MHz]; Standard Battery

Conducted Power=24.5dBm; Right Head Phantom. Cheek/Touch Position: Ambient Temp.=22°C; Meas. Tissue Temp.=20.0°C  
Test Date--06/23/2002 [FCC/OET Bulletin 65-Supplement C, July 2001]



# SAMSUNG FCC ID: A3LSCHN182 -- 835MHz CDMA Head SAR

SAM Phantom; Right Hand Section; Probe: ET3DV6 - SN1551 -- ConvF(6.80,6.80,6.80)

Head 835 MHz:  $\sigma = 0.92$  mho/m  $\epsilon_r = 43.6$   $\rho = 1.00$  g/cm<sup>3</sup>; Antenna Position- Out; Crest factor: 1.0

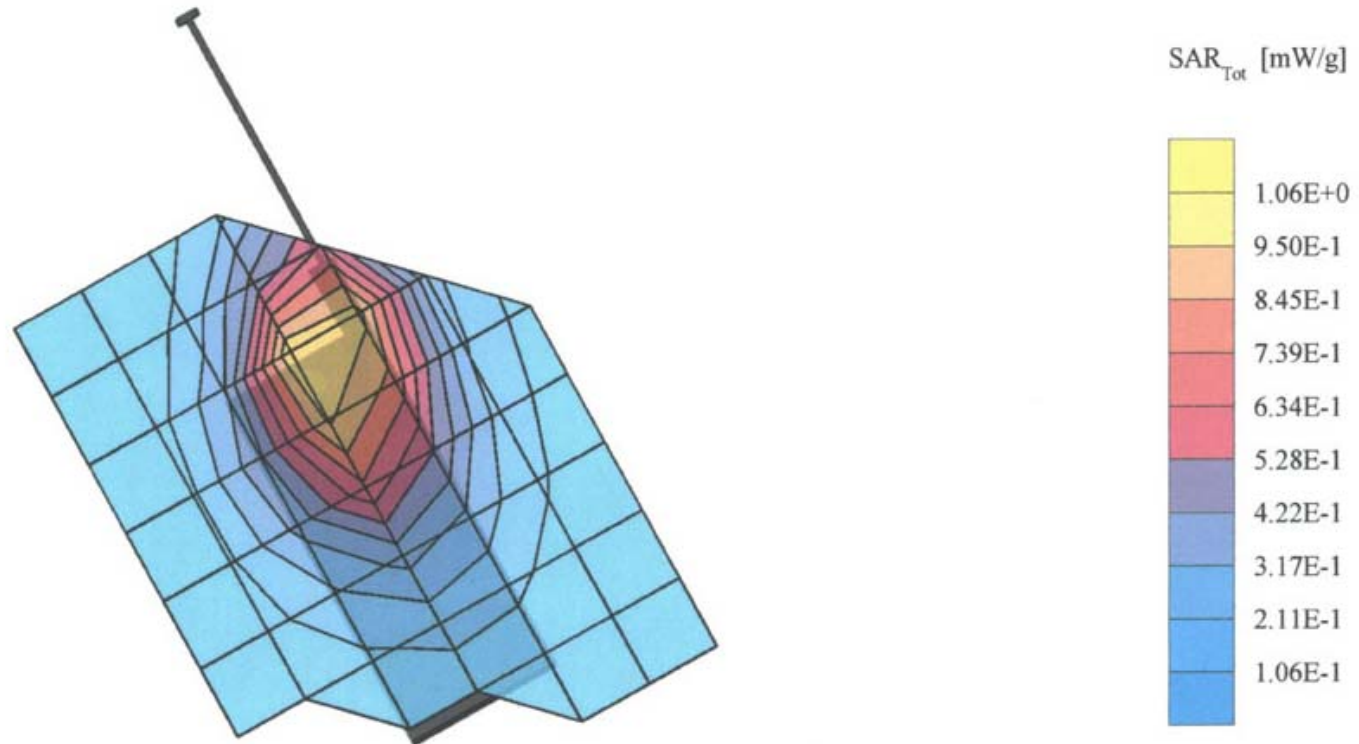
SAR (1g): 1.15 mW/g

SAMSUNG Single-Mode Cellular Phone Model: SCH-N182

CDMA Mode. Ch.1013 [824.7MHz]: Standard Battery

Conducted Power=24.5dBm; Right Head Phantom, Ear/Tilt 15deg Position; Ambient Temp.=22°C; Meas. Tissue Temp.=-20.0°C

Test Date--06/23/2002 [FCC/OET Bulletin 65-Supplement C, July 2001]



# SAMSUNG FCC ID: A3LSCHN182 -- 835MHz CDMA Head SAR

SAM Phantom; Left Hand Section; Probe: ET3DV6 - SN1551 -- ConvF(6.80,6.80,6.80)

Head 835 MHz:  $\sigma = 0.92$  mho/m  $\epsilon_r = 43.6$   $\rho = 1.00$  g/cm<sup>3</sup>; Antenna Position- Out; Crest factor: 1.0

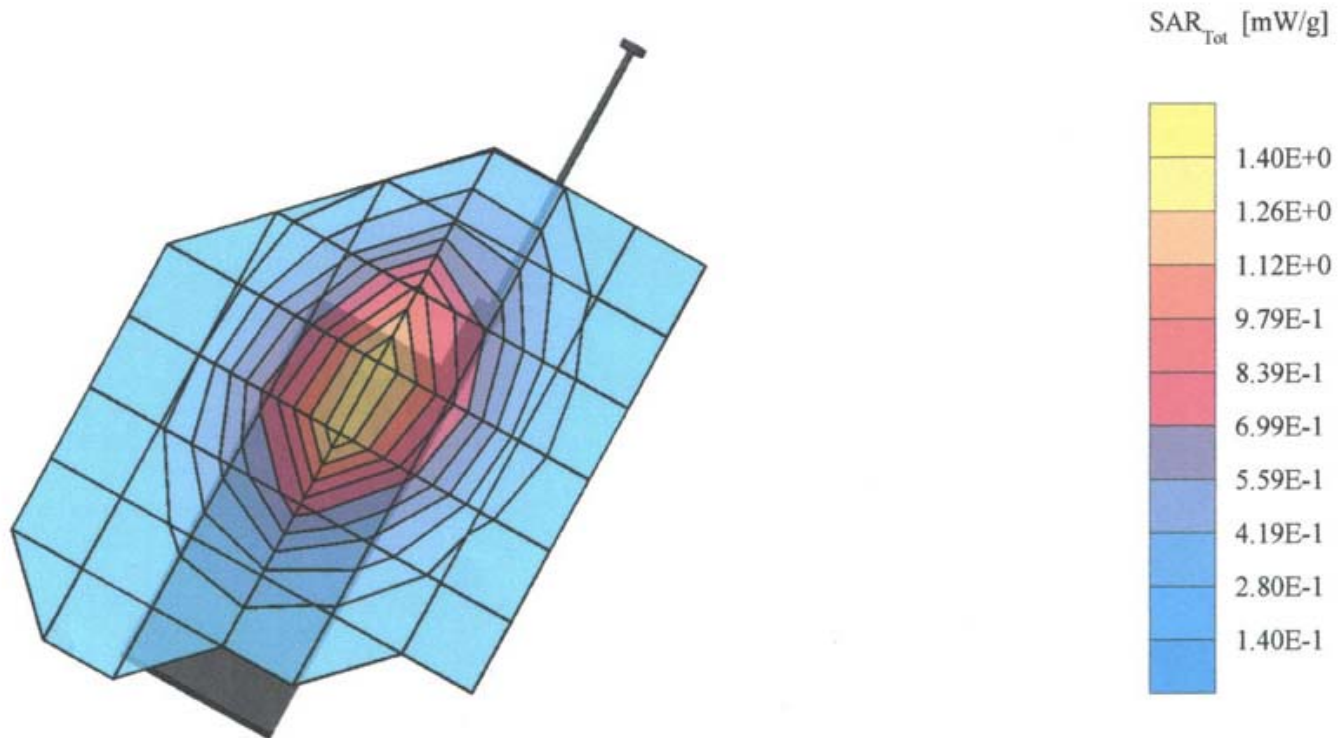
SAR (1g): 1.33 mW/g, SAR (10g): 0.930 mW/g

SAMSUNG Single-Mode Cellular Phone Model: SCH-N182

CDMA Mode. Ch.1013 [824.7MHz]: Standard Battery

Conducted Power=24.5dBm; Left Head Phantom. Cheek/Touch Position: Ambient Temp.=22°C; Meas. Tissue Temp.=20.0°C

Test Date--06/22/2002 [FCC/OET Bulletin 65-Supplement C, July 2001]



# SAMSUNG FCC ID: A3LSCHN182 -- 835MHz CDMA Head SAR

SAM Phantom; Left Hand Section; Probe: ET3DV6 - SN1551 -- ConvF(6.80,6.80,6.80)

Head 835 MHz:  $\sigma = 0.92$  mho/m  $\epsilon_r = 43.6$   $\rho = 1.00$  g/cm<sup>3</sup>; Antenna Position- Out; Crest factor: 1.0

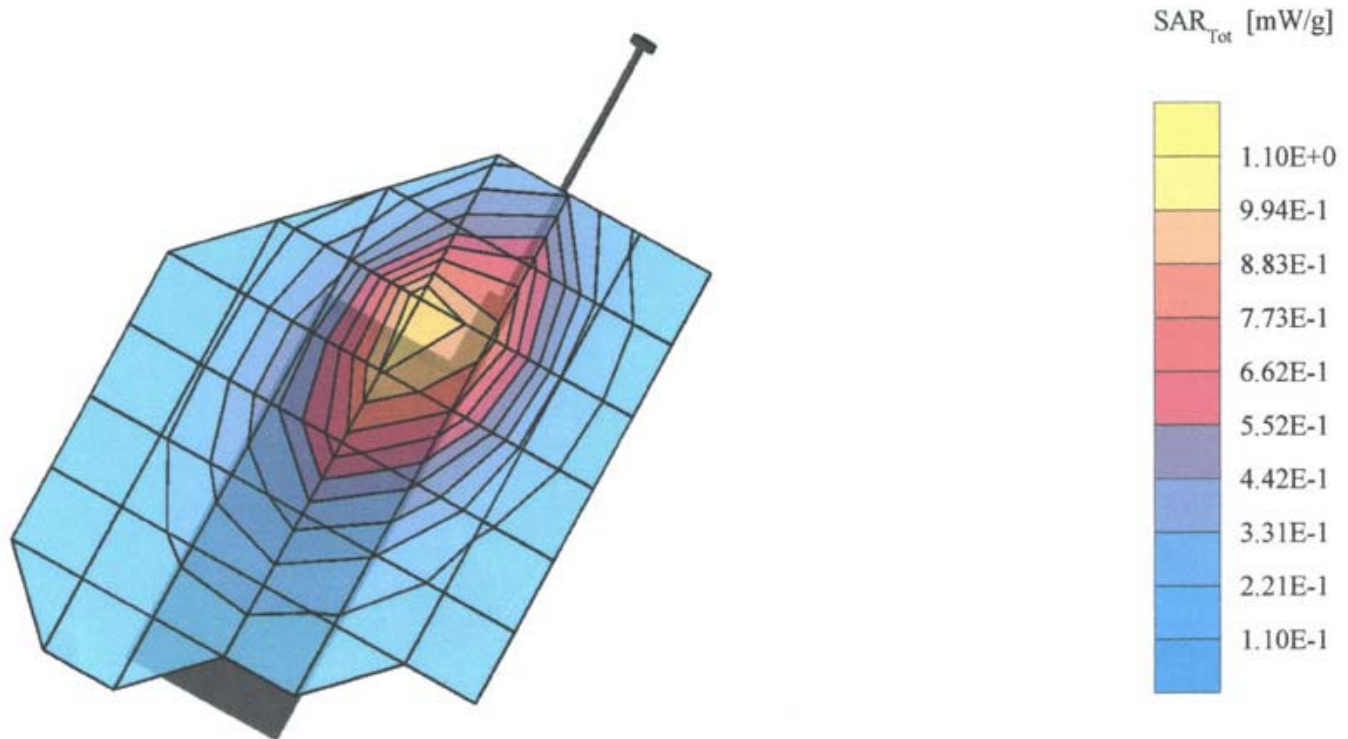
SAR (1g): 1.30 mW/g

SAMSUNG Single-Mode Cellular Phone Model: SCH-N182

CDMA Mode, Ch.1013 [824.7MHz]; Standard Battery

Conducted Power=24.5dBm; Left Head Phantom, Ear/Tilt 15deg Position; Ambient Temp.=22°C; Meas. Tissue Temp.=-20.0°C

Test Date--06/22/2002 [FCC/OET Bulletin 65-Supplement C, July 2001]



# SAMSUNG FCC ID: A3LSCHN182 -- 835MHz CDMA Body SAR

SAM Phantom; Flat Section; Probe: ET3DV6 - SN1551 -- ConvF(6.60,6.60,6.60)

Body 835 MHz:  $\sigma = 0.93$  mho/m  $\epsilon_r = 56.9$   $\rho = 1.00$  g/cm<sup>3</sup>; Antenna Position- Out; Crest factor: 1.0

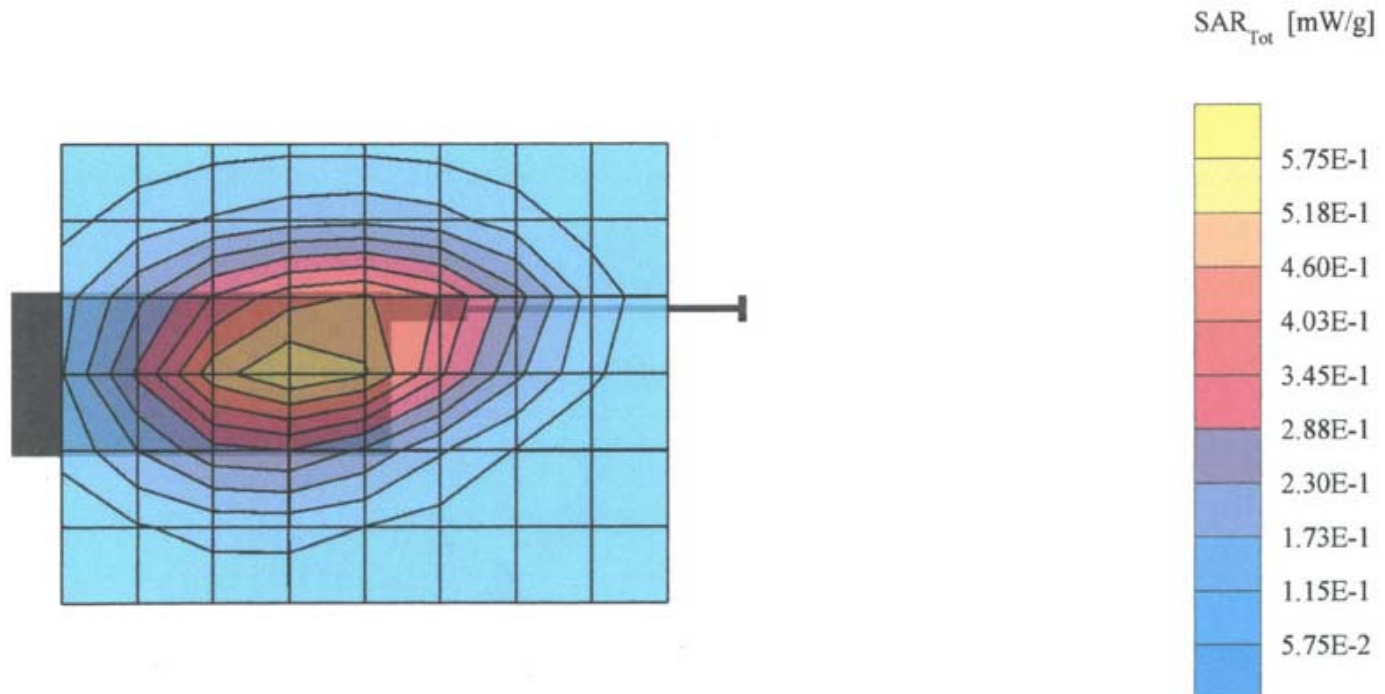
SAR (1g): 0.559 mW/g

SAMSUNG Single-Mode Cellular Phone Model: SCH-N182

CDMA Mode. Ch.1013 [824.7MHz]: Standard Battery

Conducted Power=24.5dBm; Spacing=1.5cm from flat phantom to phone, w/o beltclip or holster; Ambient Temp.=22°C; Tissue Temp.=20.9°C

Test Date--06/24/2002 [FCC/OET Bulletin 65-Supplement C, July 2001]



# SAMSUNG FCC ID: A3LSCHN182 -- 835MHz CDMA Head SAR

SAM Phantom; Section; Probe: ET3DV6 - SN1551 - ConvF(6.80,6.80,6.80)

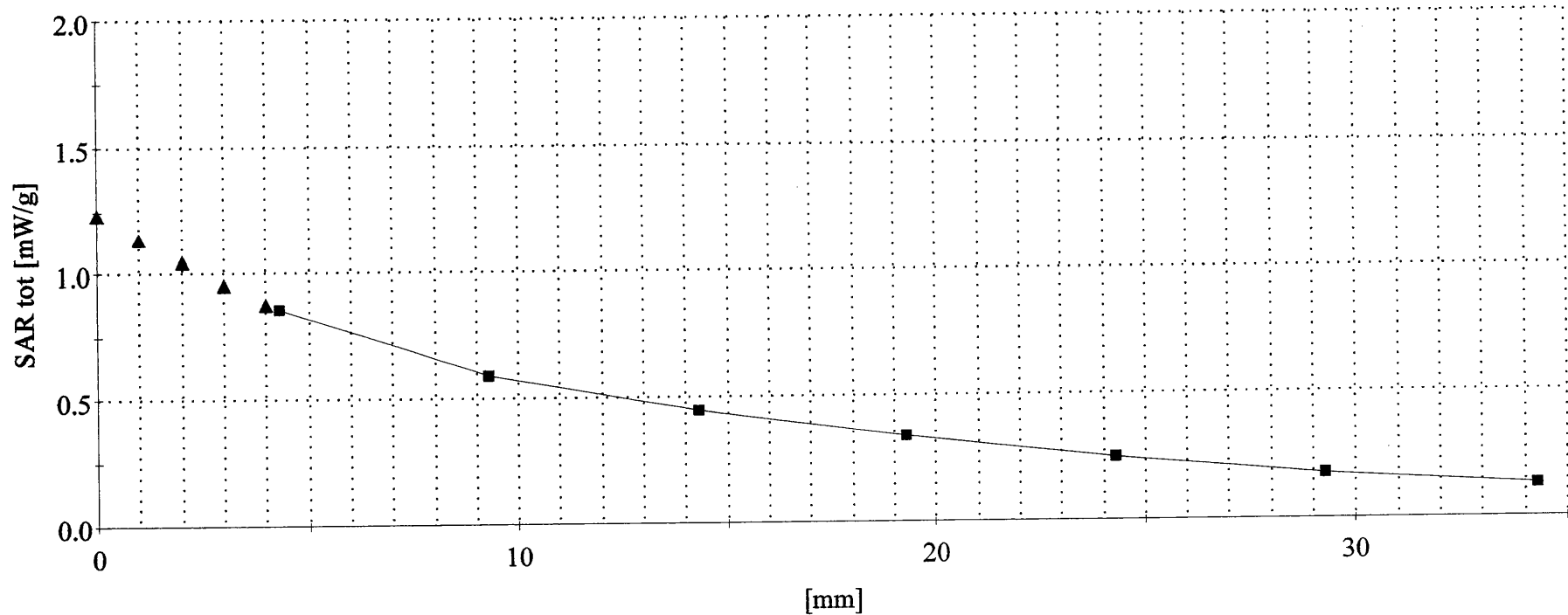
Head 835 MHz:  $\sigma = 0.92$  mho/m  $\epsilon_r = 43.6$   $\rho = 1.00$  g/cm<sup>3</sup>; Antenna Position-Out ; Crest factor: 1.0

SAMSUNG Single-Mode Cellular Phone Model: SCH-N182

CDMA Mode, Ch.1013 [824.7MHz]; Standard Battery

Conducted Power=24.5dBm; Left Head Phantom, Cheek/Touch Position; Meas. Tissue Temp. (°C) - 20.0

Test Date-06/22/2002 [FCC/OET Bulletin 65-Supplement C, July 2001]



# SAMSUNG FCC ID: A3LSCHN182 -- 835MHz CDMA Body SAR

SAM Phantom; Section; Probe: ET3DV6 - SN1551 - ConvF(6.60,6.60,6.60)

Body 835 MHz:  $\sigma = 0.93$  mho/m  $\epsilon_r = 56.9$   $\rho = 1.00$  g/cm<sup>3</sup>; Antenna Position-Out ; Crest factor: 1.0

SAMSUNG Single-Mode Cellular Phone Model: SCH-N182

CDMA Mode, Ch.1013 [824.7MHz]; Standard Battery

Conducted Power=24.5dBm; Spacing=1.5cm from flat phantom to phone, w/o beltclip or holster, Tissue Temp. (°C) - 20.9

Test Date--06/24/2002 [FCC/OET Bulletin 65-Supplement C, July 2001]

