

File : c:/idx3/SYSTEM/SARMEAS3/data/Normal/00060909_ZOOM.VLT
Start : 9-Jun-100 12:00:33 pm End : 9-Jun-100 12:18:10 pm

Radio Type : SAMSUNG
Model Number : A3LSCHN101
Serial Number : B01E124F
Frequency : 824.70 MHz
Peak Trans. Pwr : 0.500 W
Start Trans. Pwr : 0.500 W
Antenna Type : Helical
Antenna Posn. : In
Phantom Type : Body
Phantom Posn. : Abdomen
Scan Type : ZOOM/SAR
Probe Name : PCTEST
Field Type : E Field
Orientation : 0 Degrees

Mixture Type = Muscle
Mixture Dielectric Constant = 51.700
Mixture Conductivity = 1.100

Comment :
SAMSUNG DUAL BAND PHONE CDMA MODE
CHAN 1013 26.0 dBm conducted
SAMSUNG DUAL BAND PHONE

Robot : PCTEST

Probe Offset = 0.25 cm
Sensor Factor = 0.0108
Conversion Factor = 0.894

PCTEST Amplifier Channel Settings : 0.166 0.135 0.132

Max Location : X = -0.250, Y = -0.250, Z = 0.000 (cm) Value = 18.876

Measured Values (volts) =
1.821E-002 1.509E-002 1.209E-002 1.020E-002 8.622E-003 7.455E-003
6.915E-003 6.745E-003 6.728E-003 6.596E-003 6.185E-003 5.411E-003
4.459E-003 3.373E-003 2.468E-003 1.967E-003 1.896E-003 2.292E-003
2.842E-003 3.301E-003 3.367E-003

Calc. Voltage @ Surface (Vs) = 0.0223

Voltage @ 1.00 cm (Vt) = 0.0102

Ave. Voltage (Vs+Vt)/2 = 0.0163

Ave. SAR over 1 g (mW/g) = 1.347%

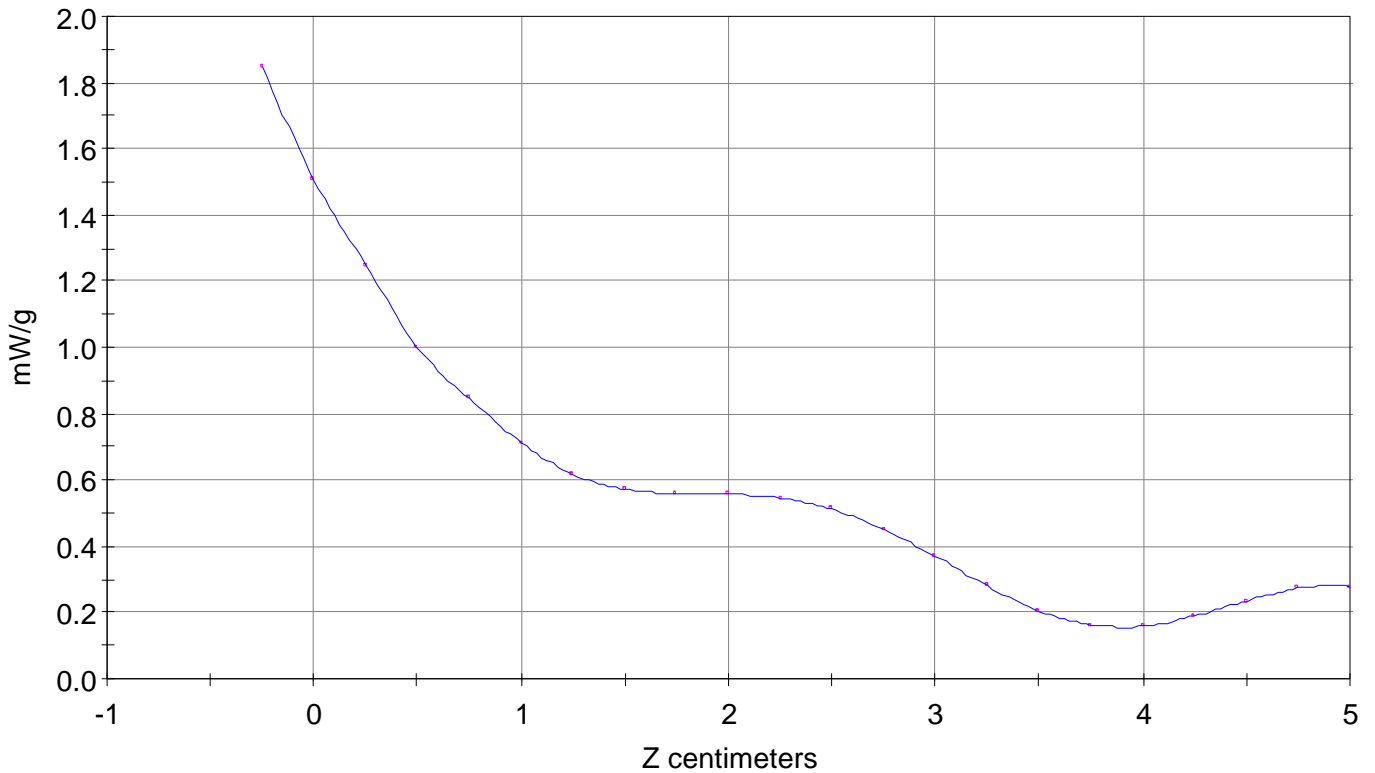
SAR Scan

File : 00060909_ZOOM

Start : 9-Jun-100 12:00:33 pm End : 9-Jun-100 12:18:10 pm

SAMSUNG/A3LSCHN101/B01E124F;824.70MHz;W;Helical/In;

Body/Abdomen;ZOOM/SAR;PCTEST/E Field/0 DegreesMuscle/51.700/1.100

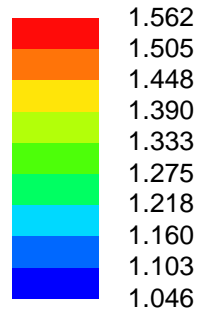
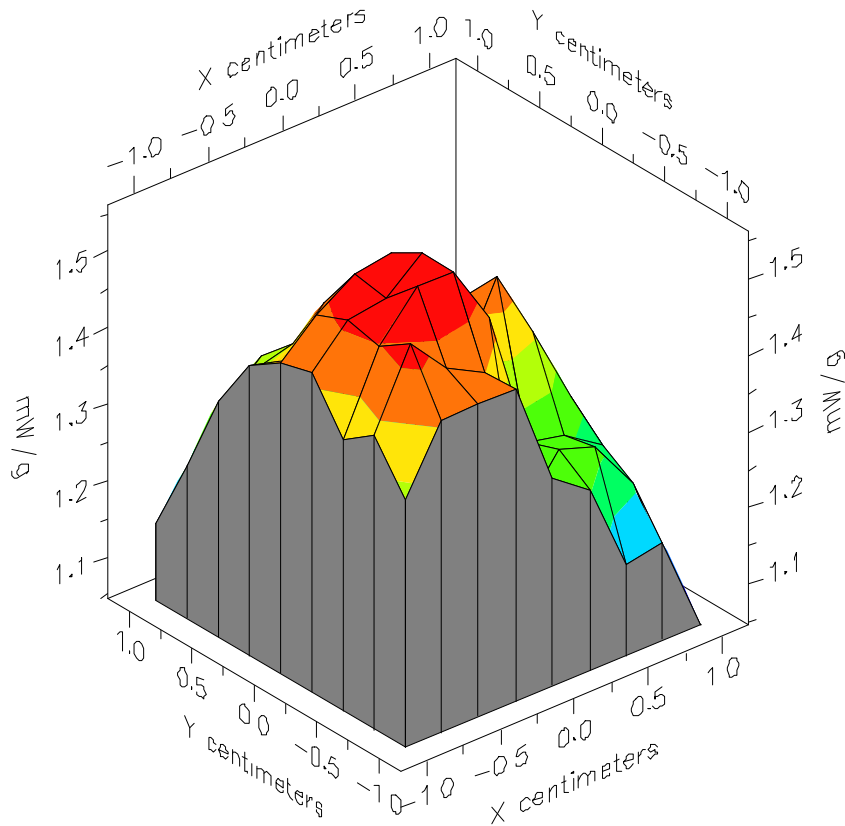


File : 00060909_ZOOM

Start : 9-Jun-100 12:00:33 pm End : 9-Jun-100 12:18:10 pm

SAMSUNG/A3LSCHN101/B01E124F;824.70MHz;W;Helical/In;

Body/Abdomen;ZOOM/SAR;PCTEST/E Field/0 DegreesMuscle/51.700/1.100

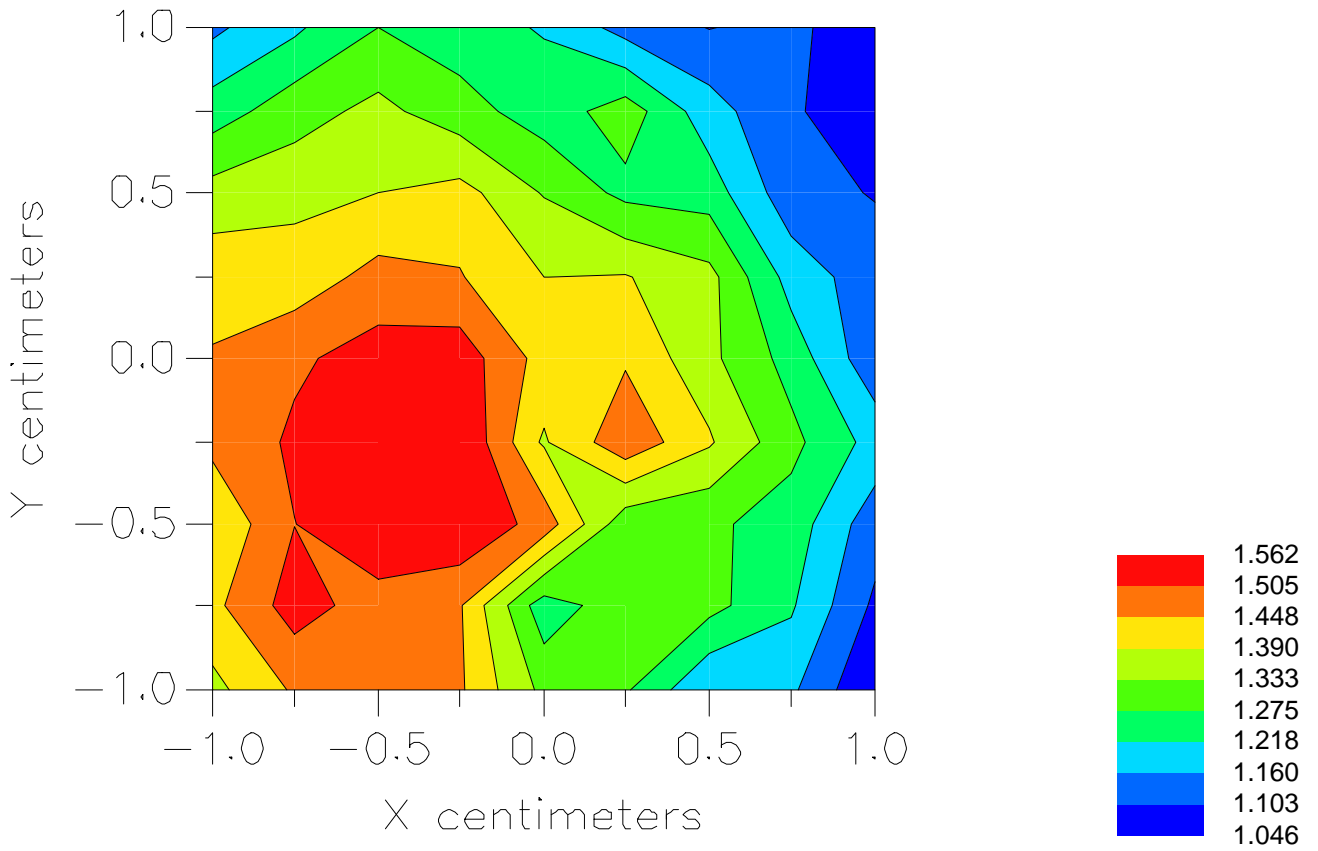


File : 00060909_ZOOM

Start : 9-Jun-100 12:00:33 pm End : 9-Jun-100 12:18:10 pm

SAMSUNG/A3LSCHN101/B01E124F;824.70MHz;W;Helical/In;

Body/Abdomen;ZOOM/SAR;PCTEST/E Field/0 DegreesMuscle/51.700/1.100



File : c:/idx3/SYSTEM/SARMEAS3/data/Normal/00060913_ZOOM.VLT
Start : 9-Jun-100 01:10:10 pm End : 9-Jun-100 01:19:45 pm

Radio Type : SAMSUNG
Model Number : A3LSCHN101
Serial Number : B01E124F
Frequency : 824.70 MHz
Peak Trans. Pwr : 0.500 W
Start Trans. Pwr : 0.500 W
Antenna Type : Helical
Antenna Posn. : Out
Phantom Type : Body
Phantom Posn. : Abdomen
Scan Type : ZOOM/SAR
Probe Name : PCTEST
Field Type : E Field
Orientation : 0 Degrees

Mixture Type = Muscle
Mixture Dielectric Constant = 51.700
Mixture Conductivity = 1.100

Comment :
SAMSUNG DUAL BAND PHONE CDMA MODE
CHAN 1013 26.0 dBm conducted
SAMSUNG DUAL BAND PHONE

Robot : PCTEST

Probe Offset = 0.25 cm
Sensor Factor = 0.0108
Conversion Factor = 0.894

PCTEST Amplifier Channel Settings : 0.166 0.135 0.132

Max Location : X = -0.750, Y = -0.250, Z = 0.000 (cm) Value = 21.242

Measured Values (volts) =
1.934E-002 1.588E-002 1.308E-002 1.071E-002 9.148E-003 8.395E-003
8.011E-003 7.922E-003 7.777E-003 7.484E-003 6.692E-003 5.602E-003
4.279E-003 3.116E-003 2.321E-003 2.026E-003 2.297E-003 2.916E-003
3.532E-003 3.958E-003 3.607E-003

Calc. Voltage @ Surface (Vs) = 0.0235

Voltage @ 1.00 cm (Vt) = 0.0107

Ave. Voltage (Vs+Vt)/2 = 0.0171

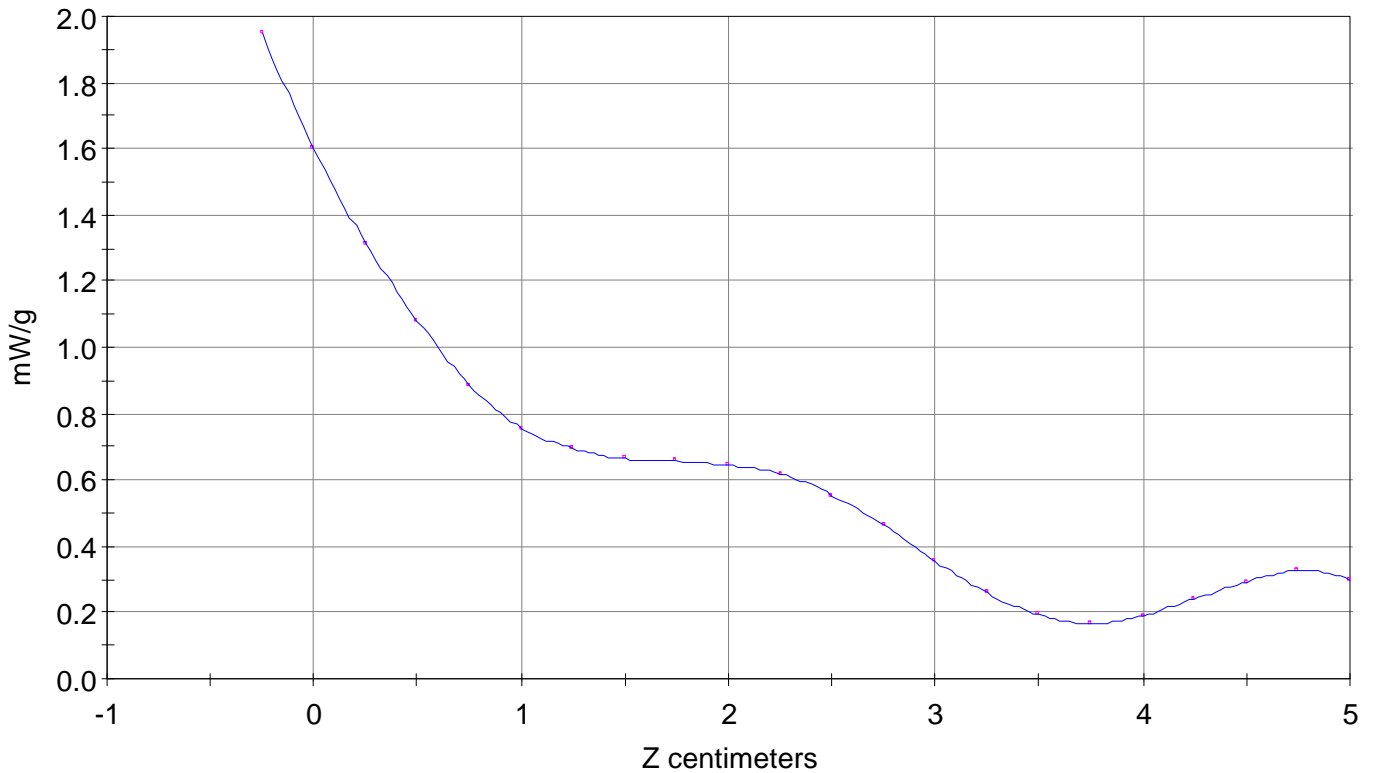
Ave. SAR over 1 g (mW/g) = 1.4166

SAR Scan

File : 00060913_ZOOM

Start : 9-Jun-100 01:10:10 pm End : 9-Jun-100 01:19:45 pm

SAMSUNG/A3LSCHN101/B01E124F;824.70MHz;W;Helical/Out;
Body/Abdomen;ZOOM/SAR;PCTEST/E Field/0 DegreesMuscle/51.700/1.100

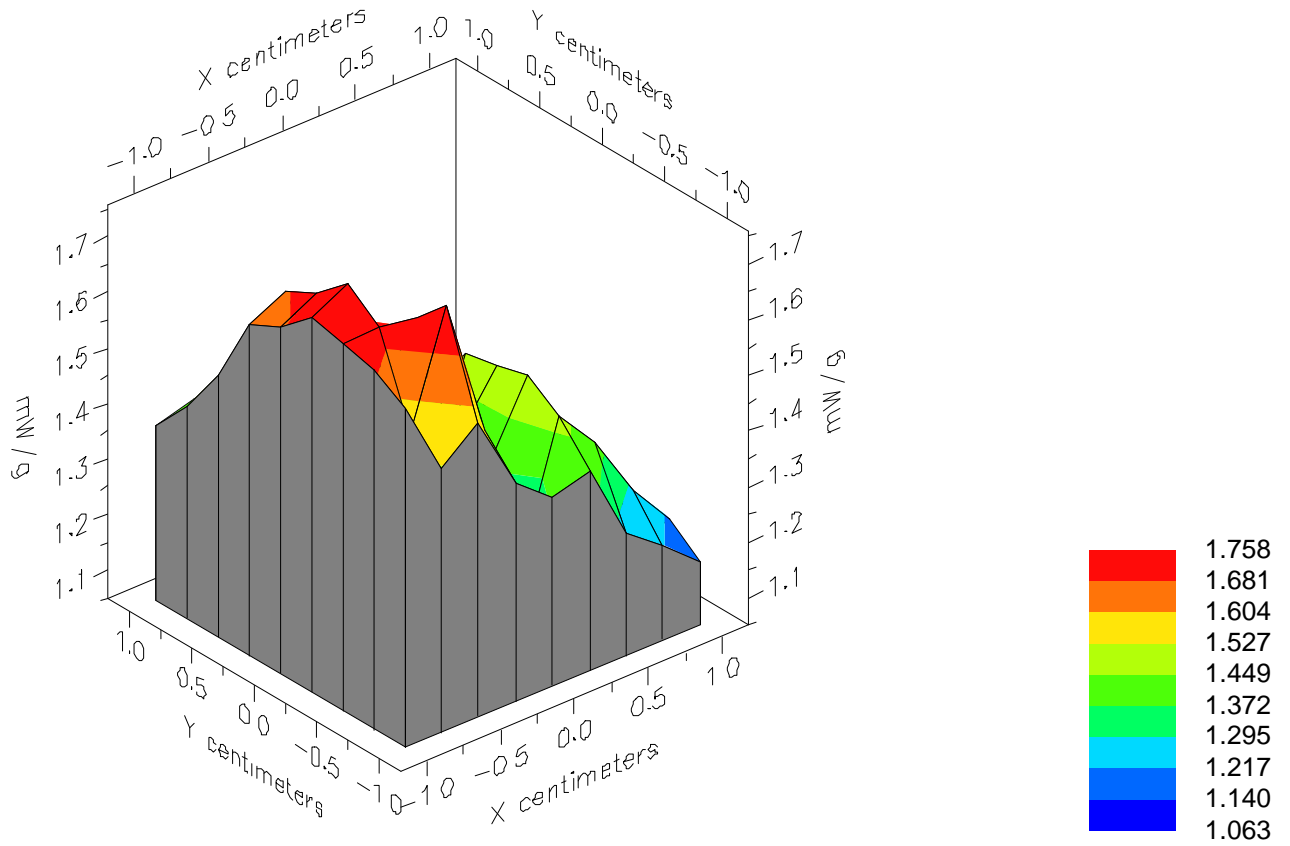


File : 00060913_ZOOM

Start : 9-Jun-100 01:10:10 pm End : 9-Jun-100 01:19:45 pm

SAMSUNG/A3LSCHN101/B01E124F;824.70MHz;W;Helical/Out;

Body/Abdomen;ZOOM/SAR;PCTEST/E Field/0 DegreesMuscle/51.700/1.100

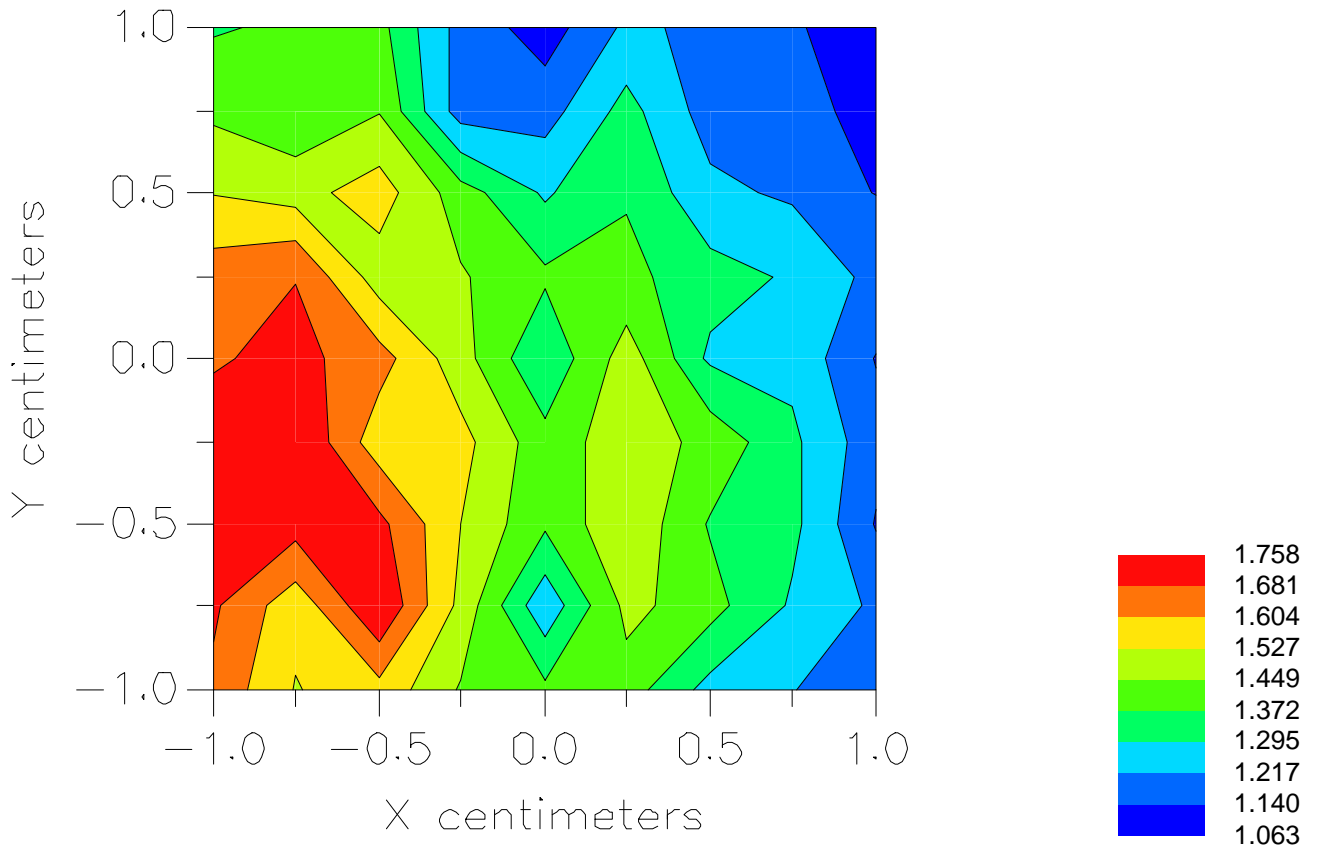


File : 00060913_ZOOM

Start : 9-Jun-100 01:10:10 pm End : 9-Jun-100 01:19:45 pm

SAMSUNG/A3LSCHN101/B01E124F;824.70MHz;W;Helical/Out;

Body/Abdomen;ZOOM/SAR;PCTEST/E Field/0 DegreesMuscle/51.700/1.100



File : c:/idx3/SYSTEM/SARMEAS3/data/Normal/00060903_ZOOM.VLT
Start : 9-Jun-100 10:16:18 am End : 9-Jun-100 10:29:08 am

Radio Type : SAMSUNG
Model Number : A3LSCHN101
Serial Number : B01E124F
Frequency : 835.89 MHz
Peak Trans. Pwr : 0.500 W
Start Trans. Pwr : 0.500 W
Antenna Type : Helical
Antenna Posn. : In
Phantom Type : Body
Phantom Posn. : Abdomen
Scan Type : ZOOM/SAR
Probe Name : PCTEST
Field Type : E Field
Orientation : 0 Degrees

Mixture Type = Muscle
Mixture Dielectric Constant = 51.700
Mixture Conductivity = 1.100

Comment :
SAMSUNG DUAL BAND PHONE CDMA MODE
CHAN 0383 26.0 dBm conducted
SAMSUNG DUAL BAND PHONE

Robot : PCTEST

Probe Offset = 0.25 cm
Sensor Factor = 0.0108
Conversion Factor = 0.894

PCTEST Amplifier Channel Settings : 0.166 0.135 0.132

Max Location : X = -2.000, Y = -0.750, Z = 0.000 (cm) Value = 19.827

Measured Values (volts) =
1.584E-002 1.213E-002 1.018E-002 8.663E-003 7.916E-003 7.363E-003
7.099E-003 6.643E-003 5.972E-003 4.937E-003 3.807E-003 2.598E-003
1.726E-003 1.220E-003 1.229E-003 1.641E-003 2.264E-003 2.670E-003
2.564E-003 1.783E-003 1.400E-003

Calc. Voltage @ Surface (Vs) = 0.0198

Voltage @ 1.00 cm (Vt) = 0.0087

Ave. Voltage (Vs+Vt)/2 = 0.0142

Ave. SAR over 1 g (mW/g) = 1.1777

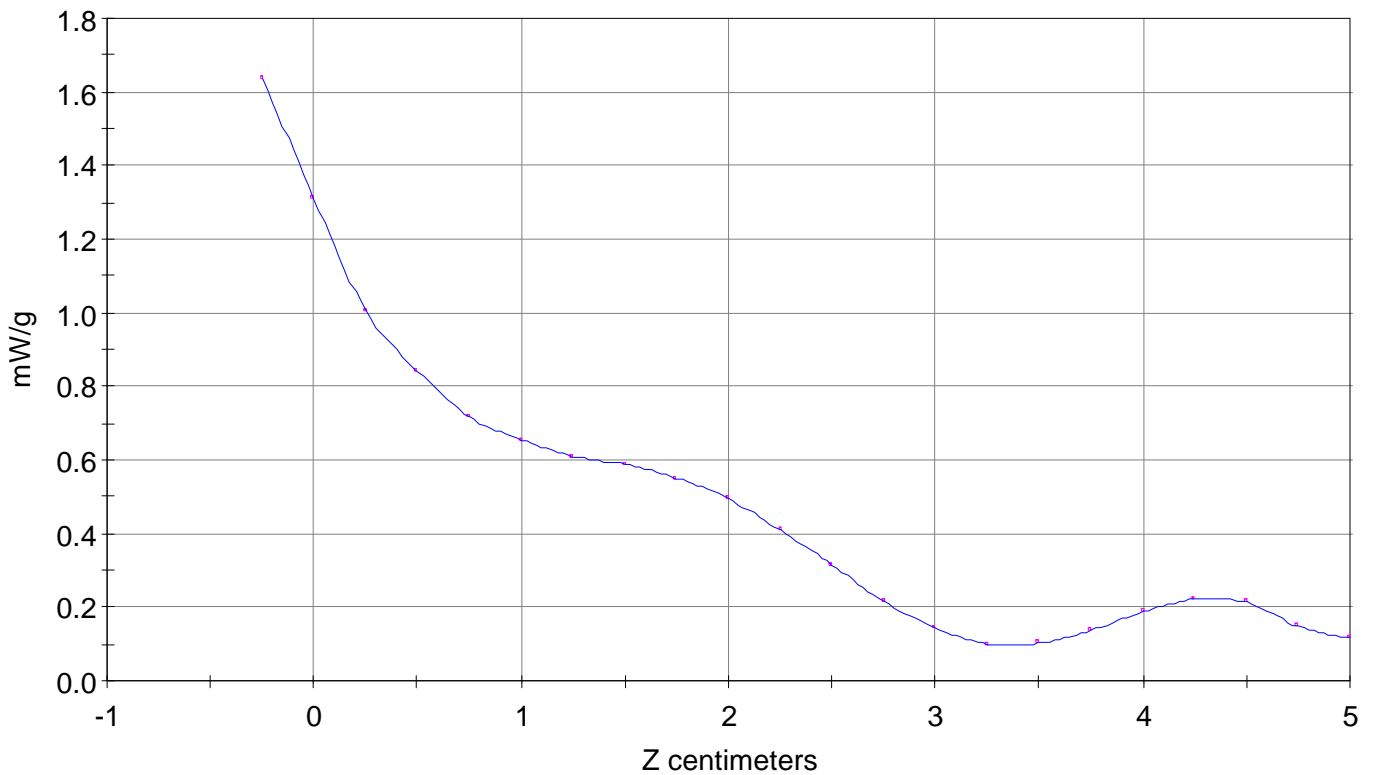
SAR Scan

File : 00060903_ZOOM

Start : 9-Jun-100 10:16:18 am End : 9-Jun-100 10:29:08 am

SAMSUNG/A3LSCHN101/B01E124F;835.89MHz;W;Helical/In;

Body/Abdomen;ZOOM/SAR;PCTEST/E Field/0 DegreesMuscle/51.700/1.100

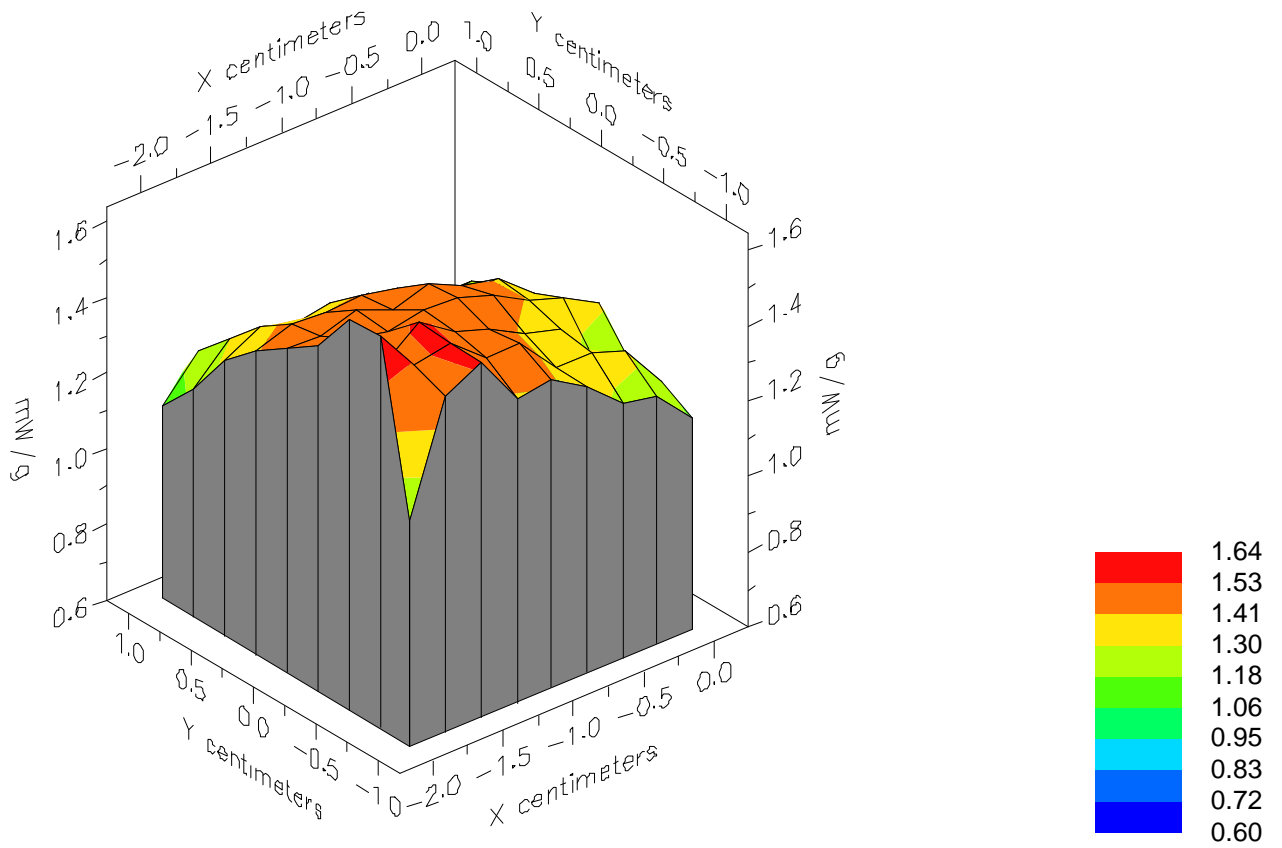


File : 00060903_ZOOM

Start : 9-Jun-100 10:16:18 am End : 9-Jun-100 10:29:08 am

SAMSUNG/A3LSCHN101/B01E124F;835.89MHz;W;Helical/In;

Body/Abdomen;ZOOM/SAR;PCTEST/E Field/0 DegreesMuscle/51.700/1.100

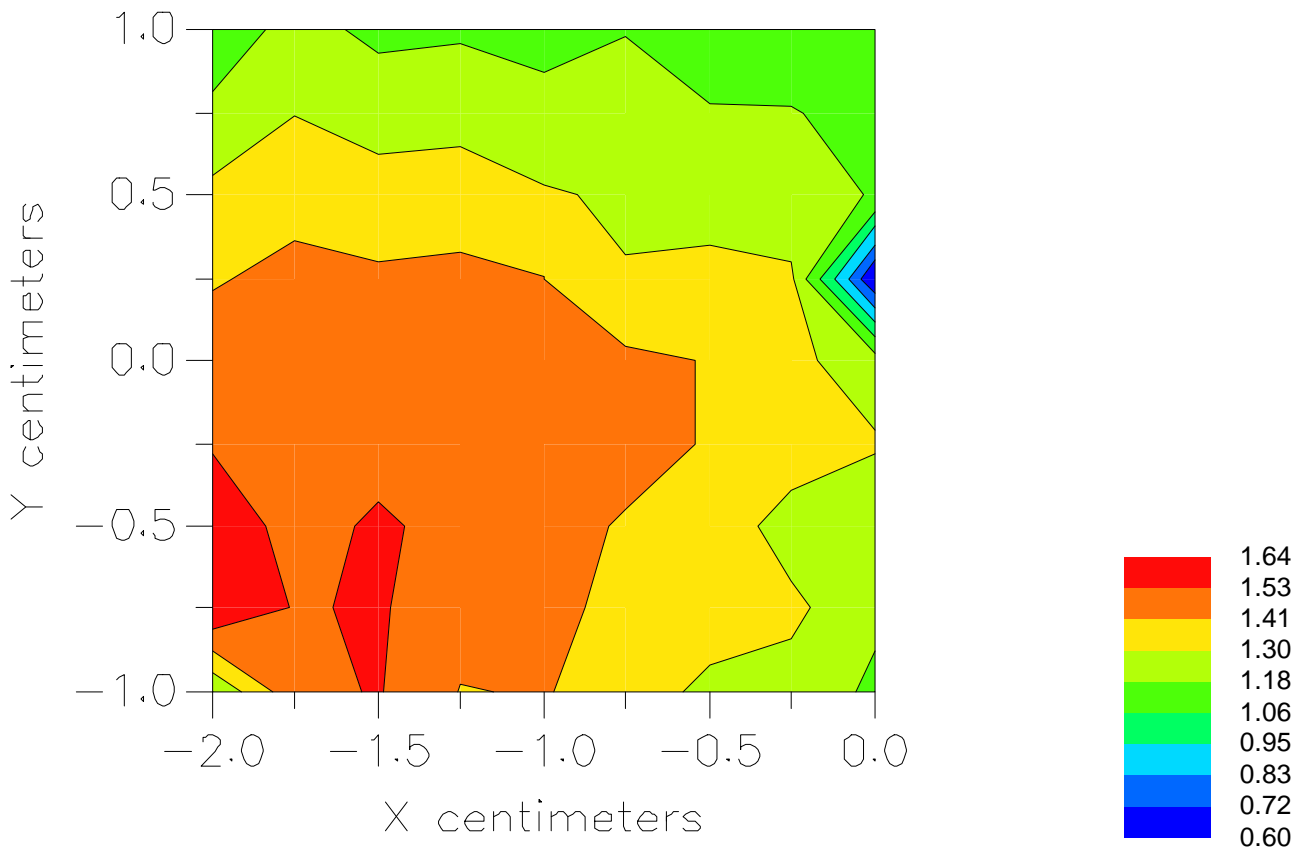


File : 00060903_ZOOM

Start : 9-Jun-100 10:16:18 am End : 9-Jun-100 10:29:08 am

SAMSUNG/A3LSCHN101/B01E124F;835.89MHz;W;Helical/In;

Body/Abdomen;ZOOM/SAR;PCTEST/E Field/0 DegreesMuscle/51.700/1.100



File : c:/idx3/SYSTEM/SARMEAS3/data/Normal/00060906_ZOOM.VLT
Start : 9-Jun-100 11:03:03 am End : 9-Jun-100 11:13:54 am

Radio Type : SAMSUNG
Model Number : A3LSCHN101
Serial Number : B01E124F
Frequency : 835.89 MHz
Peak Trans. Pwr : 0.500 W
Start Trans. Pwr : 0.500 W
Antenna Type : Helical
Antenna Posn. : Out
Phantom Type : Body
Phantom Posn. : Abdomen
Scan Type : ZOOM/SAR
Probe Name : PCTEST
Field Type : E Field
Orientation : 0 Degrees

Mixture Type = Muscle
Mixture Dielectric Constant = 51.700
Mixture Conductivity = 1.100

Comment :
SAMSUNG DUAL BAND PHONE CDMA MODE
CHAN 0383 26.0 dBm conducted
SAMSUNG DUAL BAND PHONE

Robot : PCTEST

Probe Offset = 0.25 cm
Sensor Factor = 0.0108
Conversion Factor = 0.894

PCTEST Amplifier Channel Settings : 0.166 0.135 0.132

Max Location : X = -1.250, Y = -0.250, Z = 0.000 (cm) Value = 14.824

Measured Values (volts) =
1.484E-002 1.173E-002 9.401E-003 7.616E-003 6.564E-003 5.920E-003
5.615E-003 5.482E-003 5.336E-003 4.915E-003 4.190E-003 3.180E-003
2.169E-003 1.378E-003 9.389E-004 9.076E-004 1.226E-003 1.748E-003
2.175E-003 2.223E-003 1.720E-003

Calc. Voltage @ Surface (Vs) = 0.0186

Voltage @ 1.00 cm (Vt) = 0.0076

Ave. Voltage (Vs+Vt)/2 = 0.0131

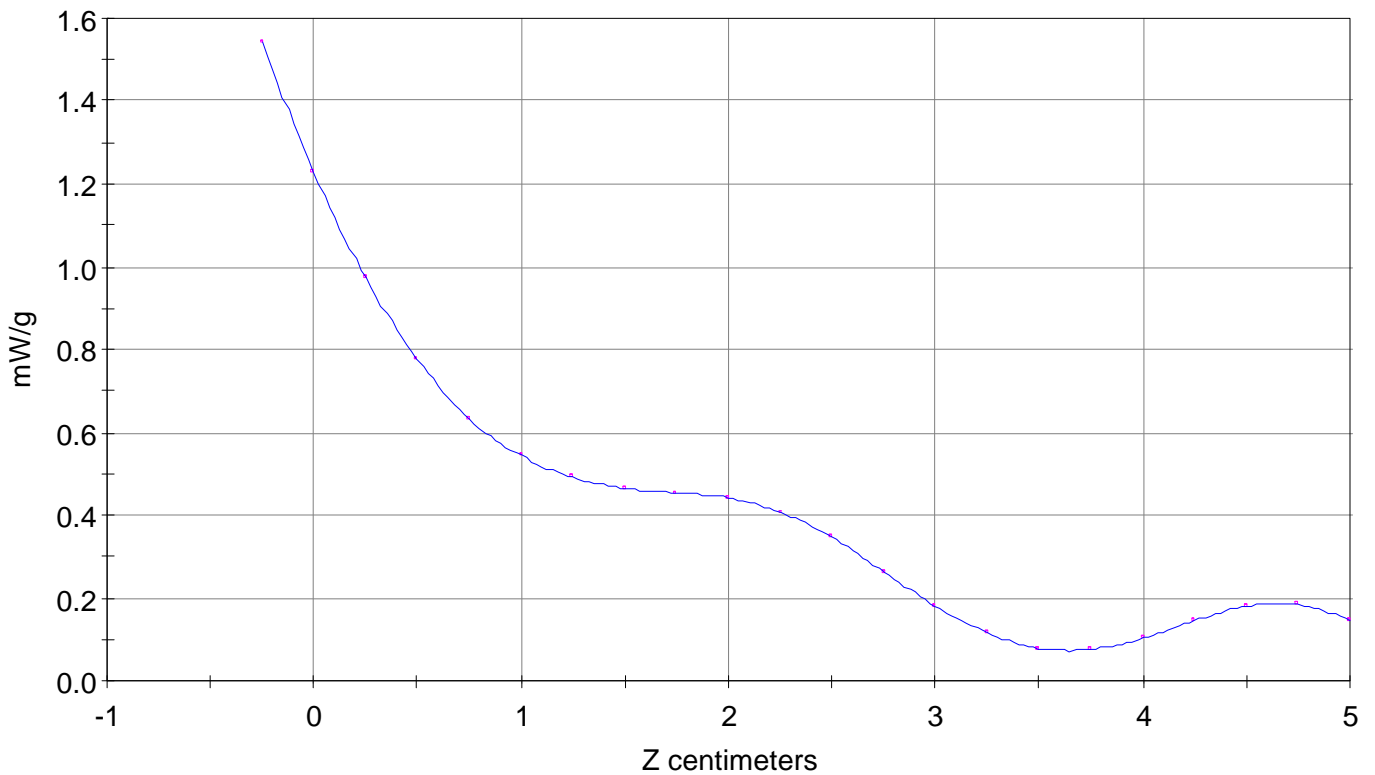
Ave. SAR over 1 g (mW/g) = 1.0865

SAR Scan

File : 00060906_ZOOM

Start : 9-Jun-100 11:03:03 am End : 9-Jun-100 11:13:54 am

SAMSUNG/A3LSCHN101/B01E124F;835.89MHz;W;Helical/Out;
Body/Abdomen;ZOOM/SAR;PCTEST/E Field/0 DegreesMuscle/51.700/1.100

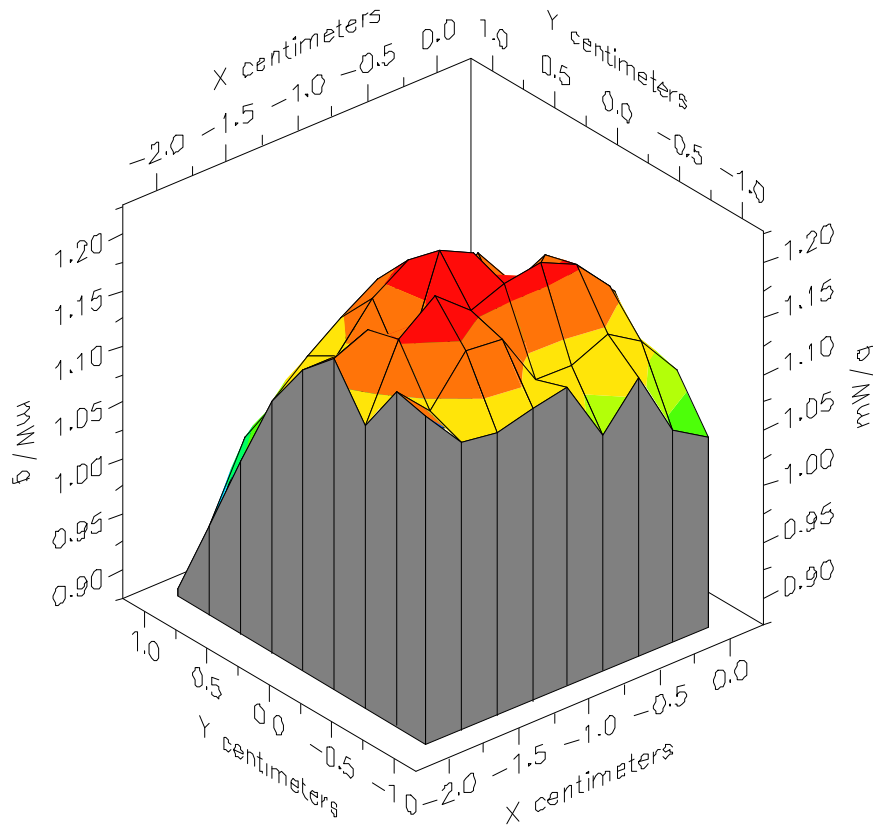


File : 00060906_ZOOM

Start : 9-Jun-100 11:03:03 am End : 9-Jun-100 11:13:54 am

SAMSUNG/A3LSCHN101/B01E124F;835.89MHz;W;Helical/Out;

Body/Abdomen;ZOOM/SAR;PCTEST/E Field/0 DegreesMuscle/51.700/1.100

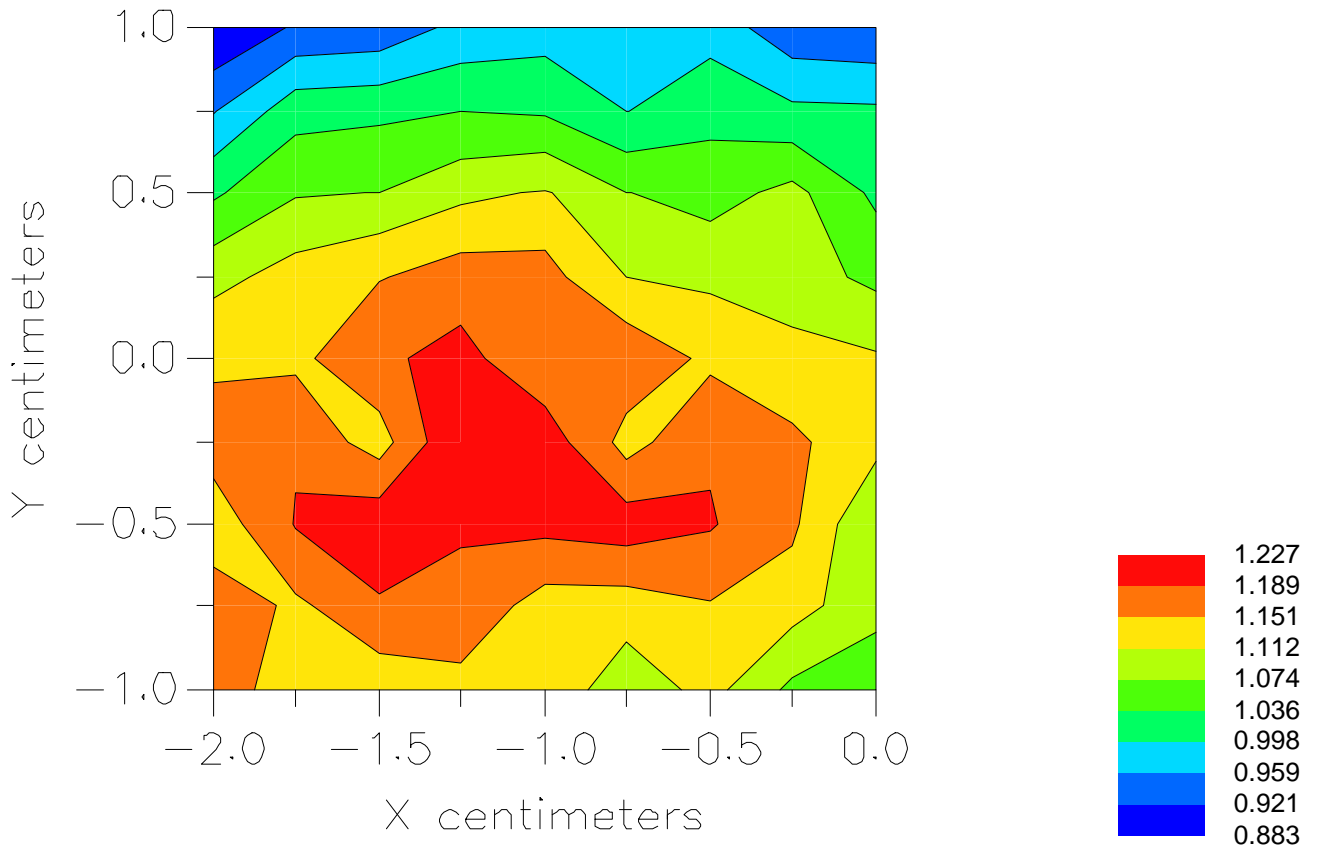


File : 00060906_ZOOM

Start : 9-Jun-100 11:03:03 am End : 9-Jun-100 11:13:54 am

SAMSUNG/A3LSCHN101/B01E124F;835.89MHz;W;Helical/Out;

Body/Abdomen;ZOOM/SAR;PCTEST/E Field/0 DegreesMuscle/51.700/1.100



File : c:/idx3/SYSTEM/SARMEAS3/data/Normal/00060910_ZOOM.VLT
Start : 9-Jun-100 12:30:51 pm End : 9-Jun-100 12:42:53 pm

Radio Type : SAMSUNG
Model Number : A3LSCHN101
Serial Number : B01E124F
Frequency : 848.31 MHz
Peak Trans. Pwr : 0.500 W
Start Trans. Pwr: 0.500 W
Antenna Type : Helical
Antenna Posn. : In
Phantom Type : Body
Phantom Posn. : Abdomen
Scan Type : ZOOM/SAR
Probe Name : PCTEST
Field Type : E Field
Orientation : 0 Degrees

Mixture Type = Muscle
Mixture Dielectric Constant = 51.700
Mixture Conductivity = 1.100

Comment :
SAMSUNG DUAL BAND PHONE CDMA MODE
CHAN 0777 26.0 dBm conducted
SAMSUNG DUAL BAND PHONE

Robot : PCTEST

Probe Offset = 0.25 cm
Sensor Factor = 0.0108
Conversion Factor = 0.894

PCTEST Amplifier Channel Settings : 0.166 0.135 0.132

Max Location : X = -2.000, Y = -1.000, Z = 0.000 (cm) Value = 18.939

Measured Values (volts) =
1.558E-002 1.222E-002 9.929E-003 8.370E-003 7.473E-003 6.944E-003
6.647E-003 6.241E-003 5.636E-003 4.721E-003 3.697E-003 2.481E-003
1.591E-003 1.123E-003 1.121E-003 1.489E-003 2.018E-003 2.421E-003
2.326E-003 1.708E-003 1.204E-003

Calc. Voltage @ Surface (Vs) = 0.0195

Voltage @ 1.00 cm (Vt) = 0.0084

Ave. Voltage (Vs+Vt)/2 = 0.0139

Ave. SAR over 1 g (mW/g) = 1.1547

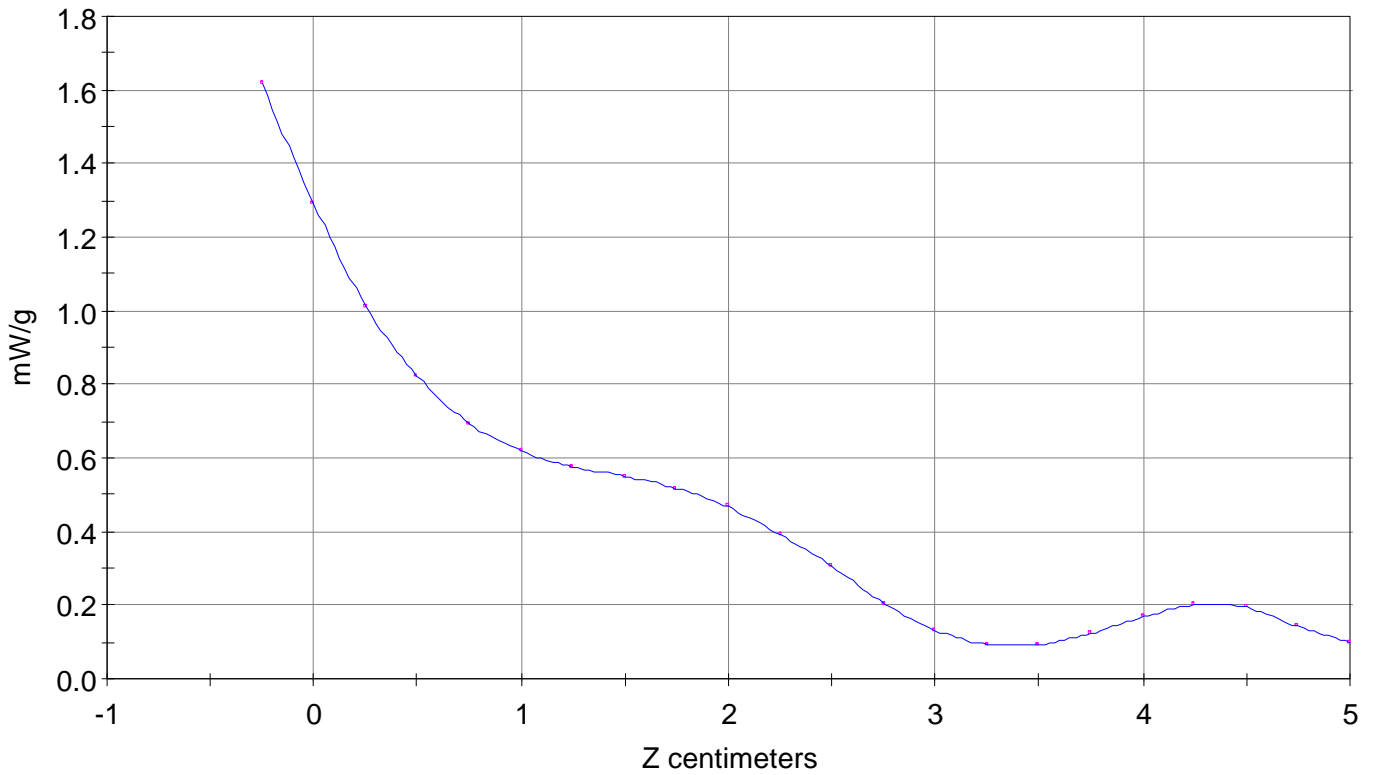
SAR Scan

File : 00060910_ZOOM

Start : 9-Jun-100 12:30:51 pm End : 9-Jun-100 12:42:53 pm

SAMSUNG/A3LSCHN101/B01E124F;848.31MHz;W;Helical/In;

Body/Abdomen;ZOOM/SAR;PCTEST/E Field/0 DegreesMuscle/51.700/1.100

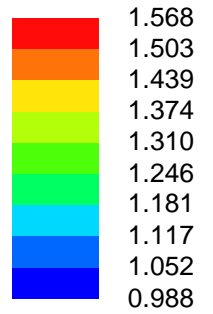
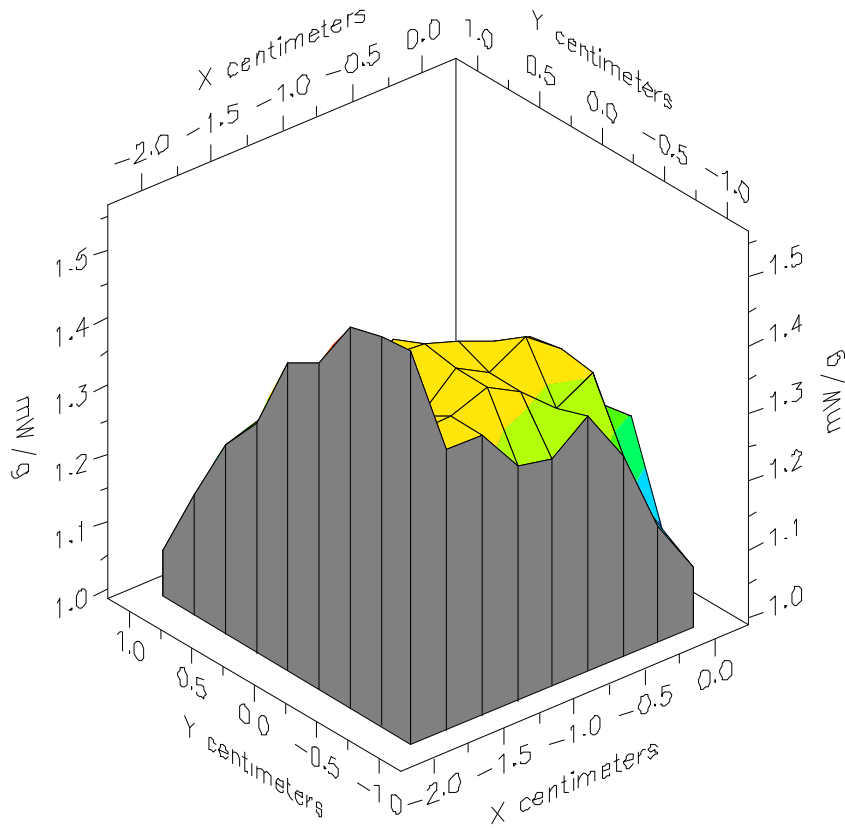


File : 00060910_ZOOM

Start : 9-Jun-100 12:30:51 pm End : 9-Jun-100 12:42:53 pm

SAMSUNG/A3LSCHN101/B01E124F;848.31MHz;W;Helical/In;

Body/Abdomen;ZOOM/SAR;PCTEST/E Field/0 DegreesMuscle/51.700/1.100

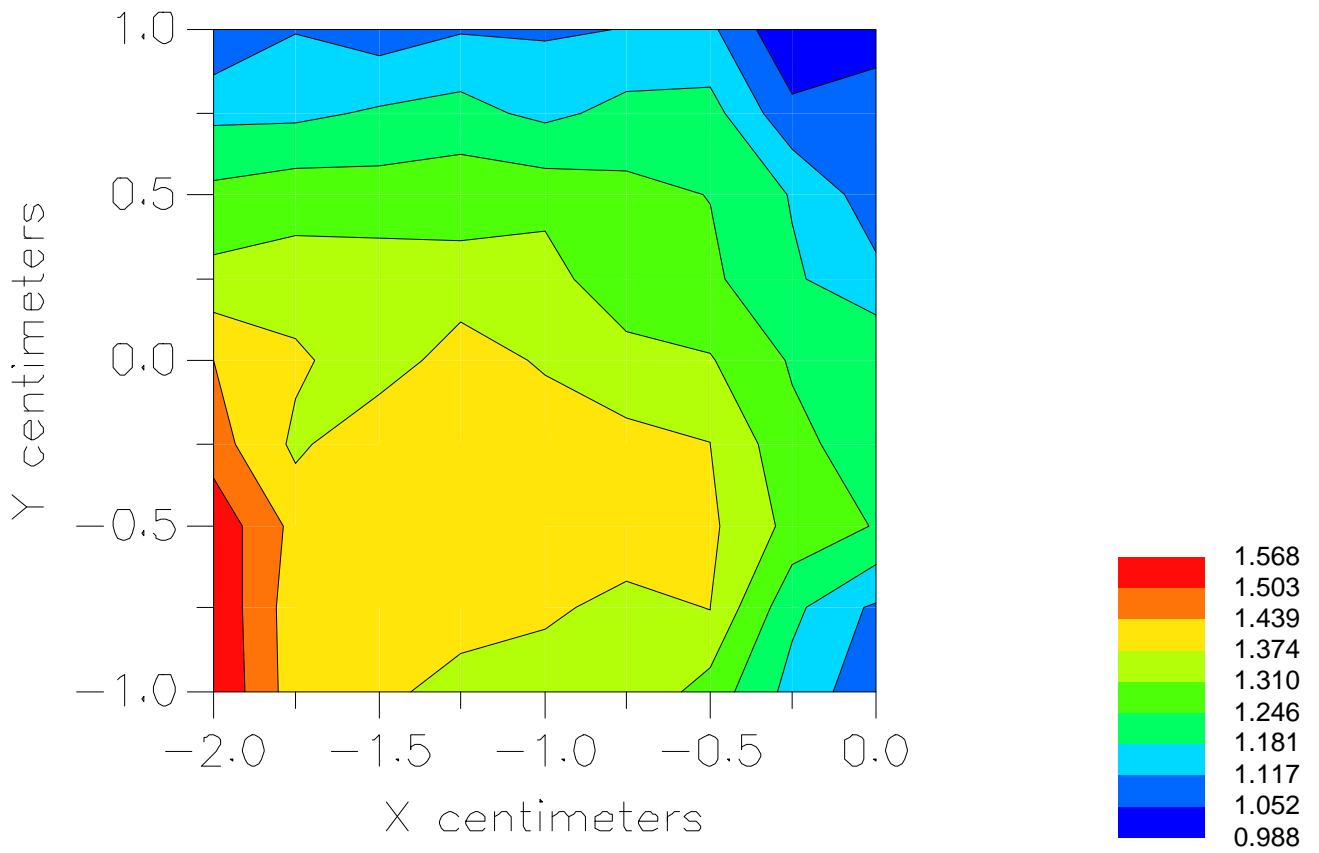


File : 00060910_ZOOM

Start : 9-Jun-100 12:30:51 pm End : 9-Jun-100 12:42:53 pm

SAMSUNG/A3LSCHN101/B01E124F;848.31MHz;W;Helical/In;

Body/Abdomen;ZOOM/SAR;PCTEST/E Field/0 DegreesMuscle/51.700/1.100



File : c:/idx3/SYSTEM/SARMEAS3/data/Normal/00060907_ZOOM.VLT
Start : 9-Jun-100 11:26:00 am End : 9-Jun-100 11:36:52 am

Radio Type : SAMSUNG
Model Number : A3LSCHN101
Serial Number : B01E124F
Frequency : 848.31 MHz
Peak Trans. Pwr : 0.500 W
Start Trans. Pwr : 0.500 W
Antenna Type : Helical
Antenna Posn. : Out
Phantom Type : Body
Phantom Posn. : Abdomen
Scan Type : ZOOM/SAR
Probe Name : PCTEST
Field Type : E Field
Orientation : 0 Degrees

Mixture Type = Muscle
Mixture Dielectric Constant = 51.700
Mixture Conductivity = 1.100

Comment :
SAMSUNG DUAL BAND PHONE CDMA MODE
CHAN 0777 26.0 dBm conducted
SAMSUNG DUAL BAND PHONE

Robot : PCTEST

Probe Offset = 0.25 cm
Sensor Factor = 0.0108
Conversion Factor = 0.894

PCTEST Amplifier Channel Settings : 0.166 0.135 0.132

Max Location : X = -1.250, Y = -0.250, Z = 0.000 (cm) Value = 15.225

Measured Values (volts) =
1.510E-002 1.172E-002 9.506E-003 7.706E-003 6.655E-003 5.896E-003
5.665E-003 5.528E-003 5.369E-003 4.906E-003 4.169E-003 3.139E-003
2.197E-003 1.379E-003 9.542E-004 9.080E-004 1.269E-003 1.657E-003
2.120E-003 2.167E-003 1.670E-003

Calc. Voltage @ Surface (Vs) = 0.0190

Voltage @ 1.00 cm (Vt) = 0.0077

Ave. Voltage (Vs+Vt)/2 = 0.0134

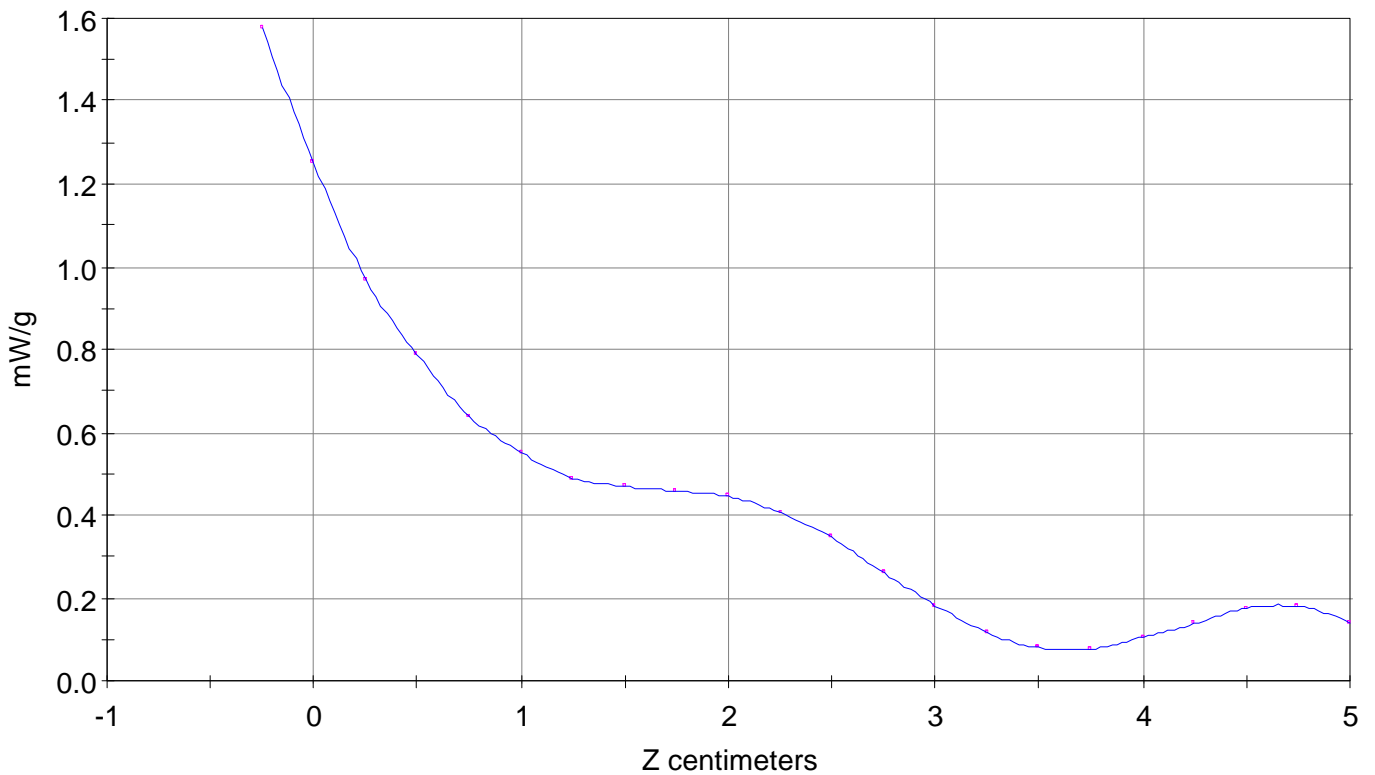
Ave. SAR over 1 g (mW/g) = 1.1065

SAR Scan

File : 00060907_ZOOM

Start : 9-Jun-100 11:26:00 am End : 9-Jun-100 11:36:52 am

SAMSUNG/A3LSCHN101/B01E124F;848.31MHz;W;Helical/Out;
Body/Abdomen;ZOOM/SAR;PCTEST/E Field/0 DegreesMuscle/51.700/1.100

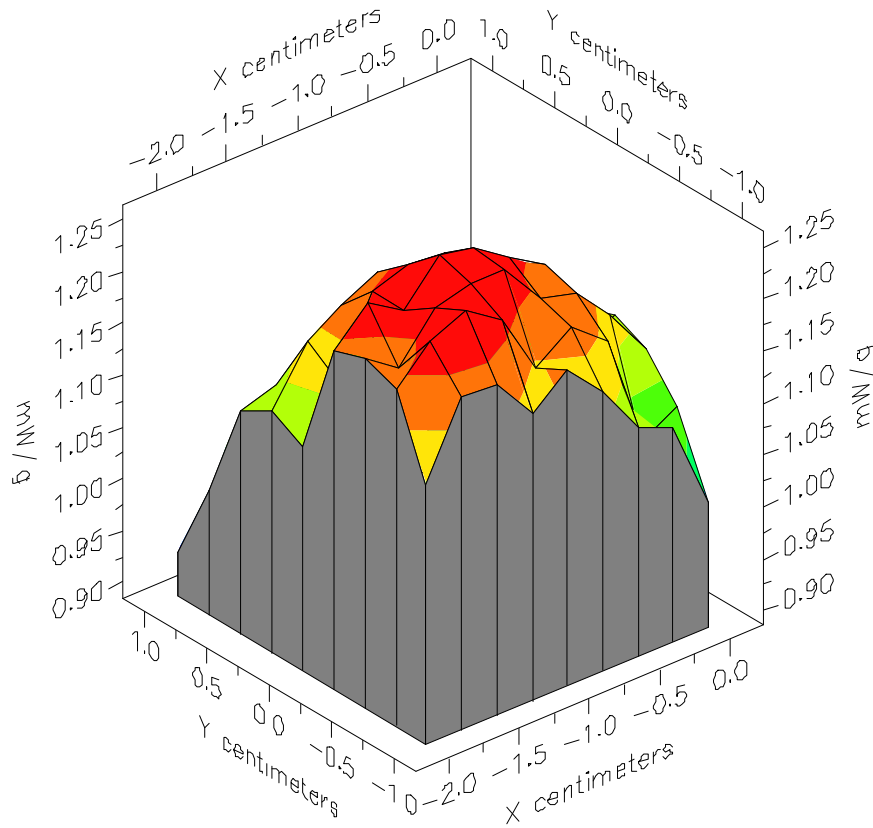


File : 00060907_ZOOM

Start : 9-Jun-100 11:26:00 am End : 9-Jun-100 11:36:52 am

SAMSUNG/A3LSCHN101/B01E124F;848.31MHz;W;Helical/Out;

Body/Abdomen;ZOOM/SAR;PCTEST/E Field/0 DegreesMuscle/51.700/1.100



File : 00060907_ZOOM

Start : 9-Jun-100 11:26:00 am End : 9-Jun-100 11:36:52 am

SAMSUNG/A3LSCHN101/B01E124F;848.31MHz;W;Helical/Out;

Body/Abdomen;ZOOM/SAR;PCTEST/E Field/0 DegreesMuscle/51.700/1.100

