

File : c:/idx3/SYSTEM/SARMEAS3/data/Normal/00050921\_ZOOM.VLT  
Start : 9-May-100 04:50:07 pm End : 9-May-100 05:01:51 pm

Radio Type : SAMSUNG  
Model Number : A3LSCHN101  
Serial Number : 01E124F  
Frequency : 835.89 MHz  
Peak Trans. Pwr : 0.400 W  
Start Trans. Pwr: 0.400 W  
Antenna Type : Helical  
Antenna Posn. : Out  
Phantom Type : Head  
Phantom Posn. : Left Ear  
Scan Type : ZOOM/SAR  
Probe Name : PCTEST  
Field Type : E Field  
Orientation : 0 Degrees

Mixture Type = Brain  
Mixture Dielectric Constant = 43.400  
Mixture Conductivity = 0.900

Comment :  
SAMSUNG PHONE CDMA MODE  
CHAN 0363 SAR 26.0dBm CONDUCTED  
FCC PART 22

Robot : PCTEST

Probe Offset = 0.25 cm  
Sensor Factor = 0.0108  
Conversion Factor = 0.788

PCTEST Amplifier Channel Settings : 0.166 0.135 0.132

Max Location : X = 2.250, Y = -3.250, Z = 0.000 (cm) Value = 12.832

Measured Values (volts) =  
1.022E-002 8.656E-003 7.759E-003 6.944E-003 6.226E-003 5.372E-003  
4.493E-003 3.574E-003 2.789E-003 2.169E-003 1.674E-003 1.394E-003  
1.331E-003 1.439E-003 1.655E-003 1.894E-003 2.042E-003 1.971E-003  
1.495E-003 1.021E-003 1.042E-003

Calc. Voltage @ Surface (Vs) = 0.0117

Voltage @ 1.00 cm (Vt) = 0.0069

Ave. Voltage (Vs+Vt)/2 = 0.0093

Ave. SAR over 1 g (mW/g) = 0.6811

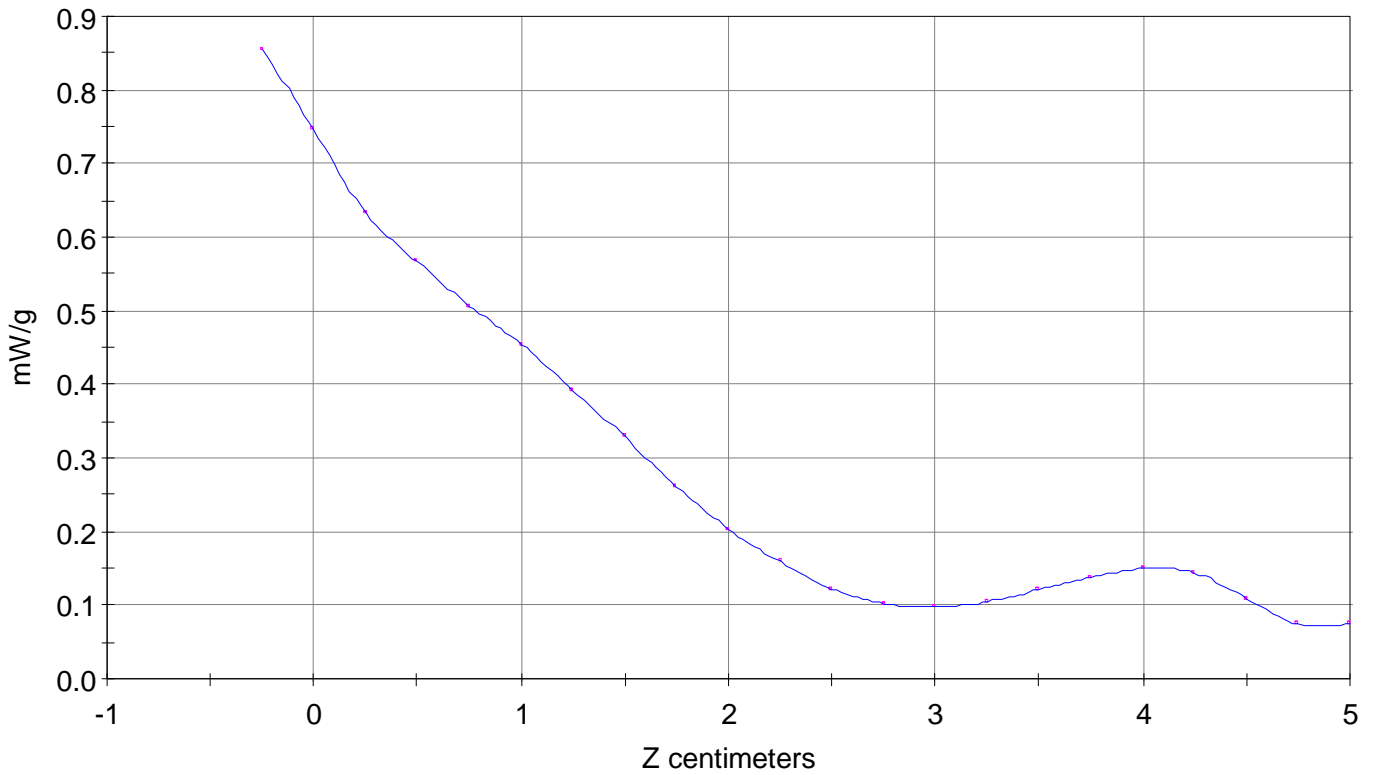
### SAR Scan

File : 00050921\_ZOOM

Start : 9-May-100 04:50:07 pm End : 9-May-100 05:01:51 pm

SAMSUNG/A3LSCHN101/01E124F;835.89MHz;W;Helical/Out;

Head/Left Ear;ZOOM/SAR;PCTEST/E Field/0 DegreesBrain/43.400/0.900

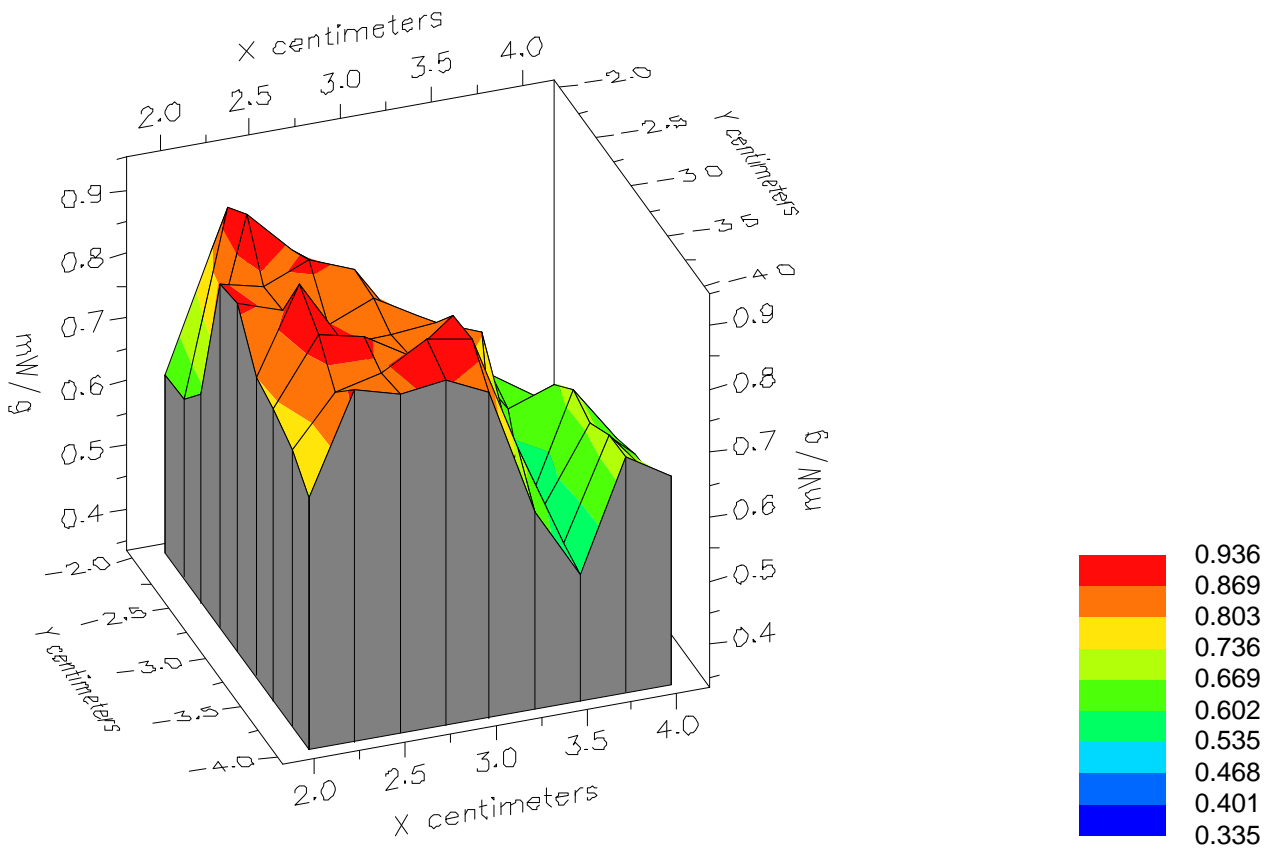


File : 00050921\_ZOOM

Start : 9-May-100 04:50:07 pm End : 9-May-100 05:01:51 pm

SAMSUNG/A3LSCHN101/01E124F;835.89MHz;W;Helical/Out;

Head/Left Ear;ZOOM/SAR;PCTEST/E Field/0 DegreesBrain/43.400/0.900

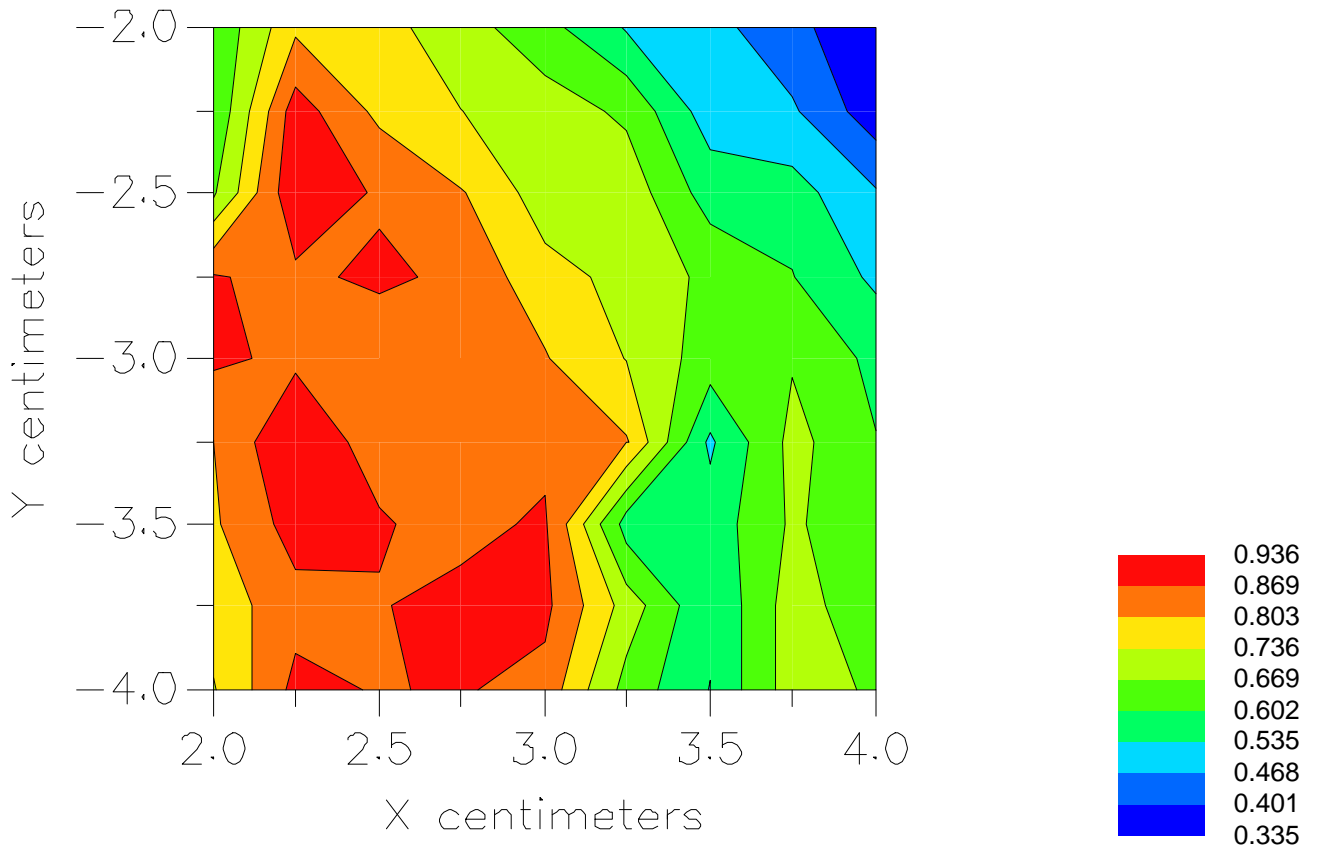


File : 00050921\_ZOOM

Start : 9-May-100 04:50:07 pm End : 9-May-100 05:01:51 pm

SAMSUNG/A3LSCHN101/01E124F;835.89MHz;W;Helical/Out;

Head/Left Ear;ZOOM/SAR;PCTEST/E Field/0 DegreesBrain/43.400/0.900



File : c:/idx3/SYSTEM/SARMEAS3/data/Normal/00050922\_ZOOM.VLT  
Start : 9-May-100 05:02:47 pm End : 9-May-100 05:14:51 pm

Radio Type : SAMSUNG  
Model Number : A3LSCHN101  
Serial Number : 01E124F  
Frequency : 835.89 MHz  
Peak Trans. Pwr : 0.400 W  
Start Trans. Pwr : 0.400 W  
Antenna Type : Helical  
Antenna Posn. : In  
Phantom Type : Head  
Phantom Posn. : Left Ear  
Scan Type : ZOOM/SAR  
Probe Name : PCTEST  
Field Type : E Field  
Orientation : 0 Degrees

Mixture Type = Brain  
Mixture Dielectric Constant = 43.400  
Mixture Conductivity = 0.900

Comment :  
SAMSUNG PHONE CDMA MODE  
CHAN 0363 SAR 26.0dBm CONDUCTED  
FCC PART 22

Robot : PCTEST

Probe Offset = 0.25 cm  
Sensor Factor = 0.0108  
Conversion Factor = 0.788

PCTEST Amplifier Channel Settings : 0.166 0.135 0.132

Max Location : X = 1.000, Y = -2.000, Z = 0.000 (cm) Value = 11.726

Measured Values (volts) =  
1.124E-002 9.602E-003 8.413E-003 7.600E-003 7.040E-003 6.447E-003  
5.903E-003 5.176E-003 4.452E-003 3.522E-003 2.732E-003 2.019E-003  
1.442E-003 1.158E-003 1.024E-003 1.110E-003 1.343E-003 1.617E-003  
1.823E-003 1.807E-003 1.447E-003

Calc. Voltage @ Surface (Vs) = 0.0130

Voltage @ 1.00 cm (Vt) = 0.0076

Ave. Voltage (Vs+Vt)/2 = 0.0103

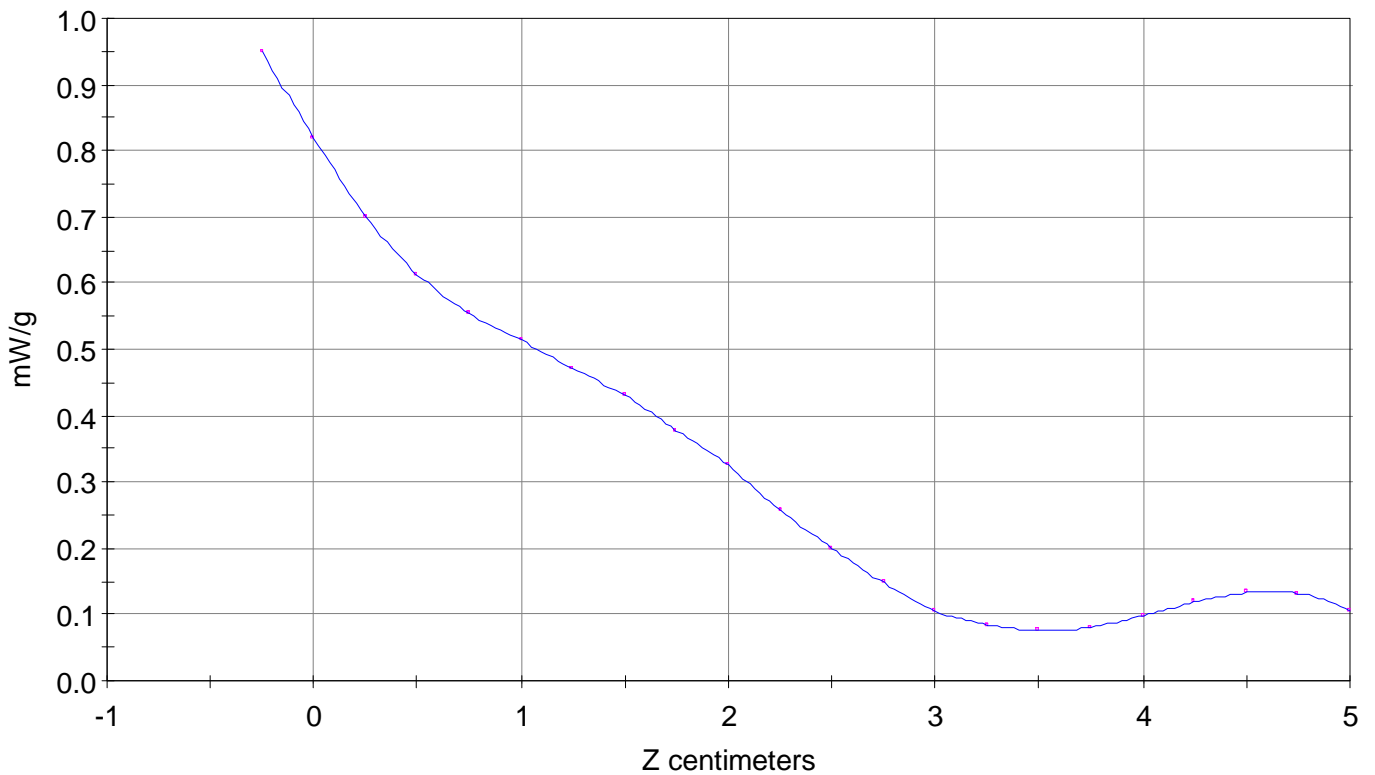
Ave. SAR over 1 g (mW/g) = 0.7512

### SAR Scan

File : 00050922\_ZOOM

Start : 9-May-100 05:02:47 pm End : 9-May-100 05:14:51 pm

SAMSUNG/A3LSCHN101/01E124F;835.89MHz;W;Helical/In;  
Head/Left Ear;ZOOM/SAR;PCTEST/E Field/0 DegreesBrain/43.400/0.900

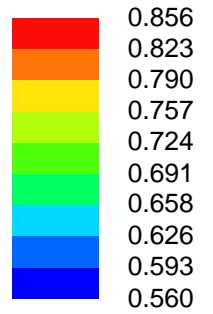
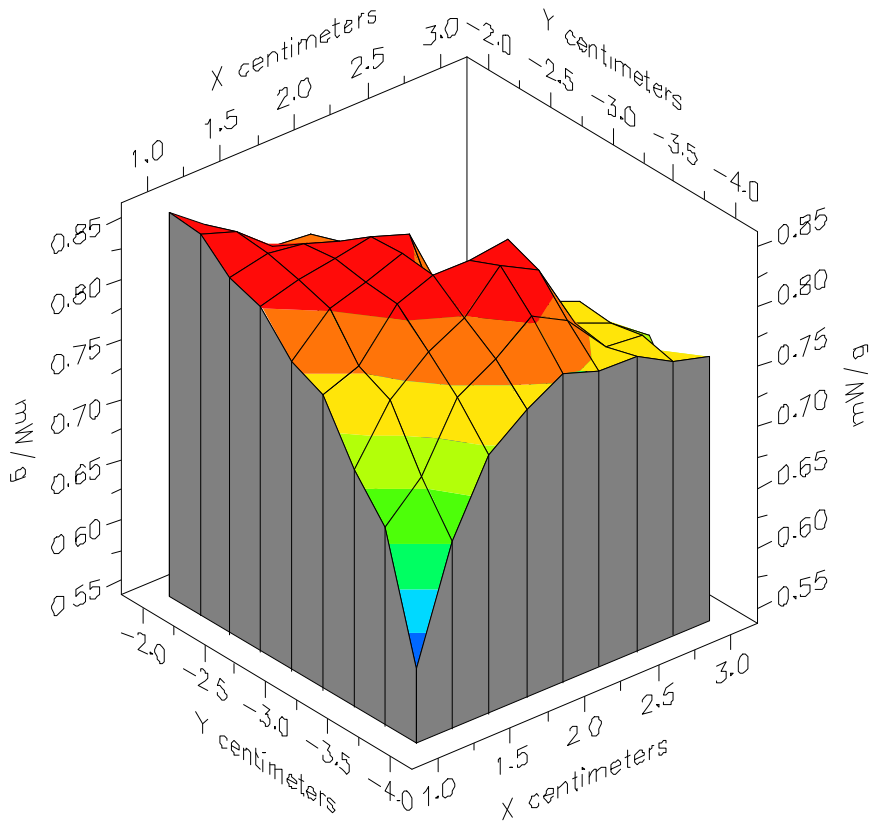


File : 00050922\_ZOOM

Start : 9-May-100 05:02:47 pm End : 9-May-100 05:14:51 pm

SAMSUNG/A3LSCHN101/01E124F;835.89MHz;W;Helical/In;

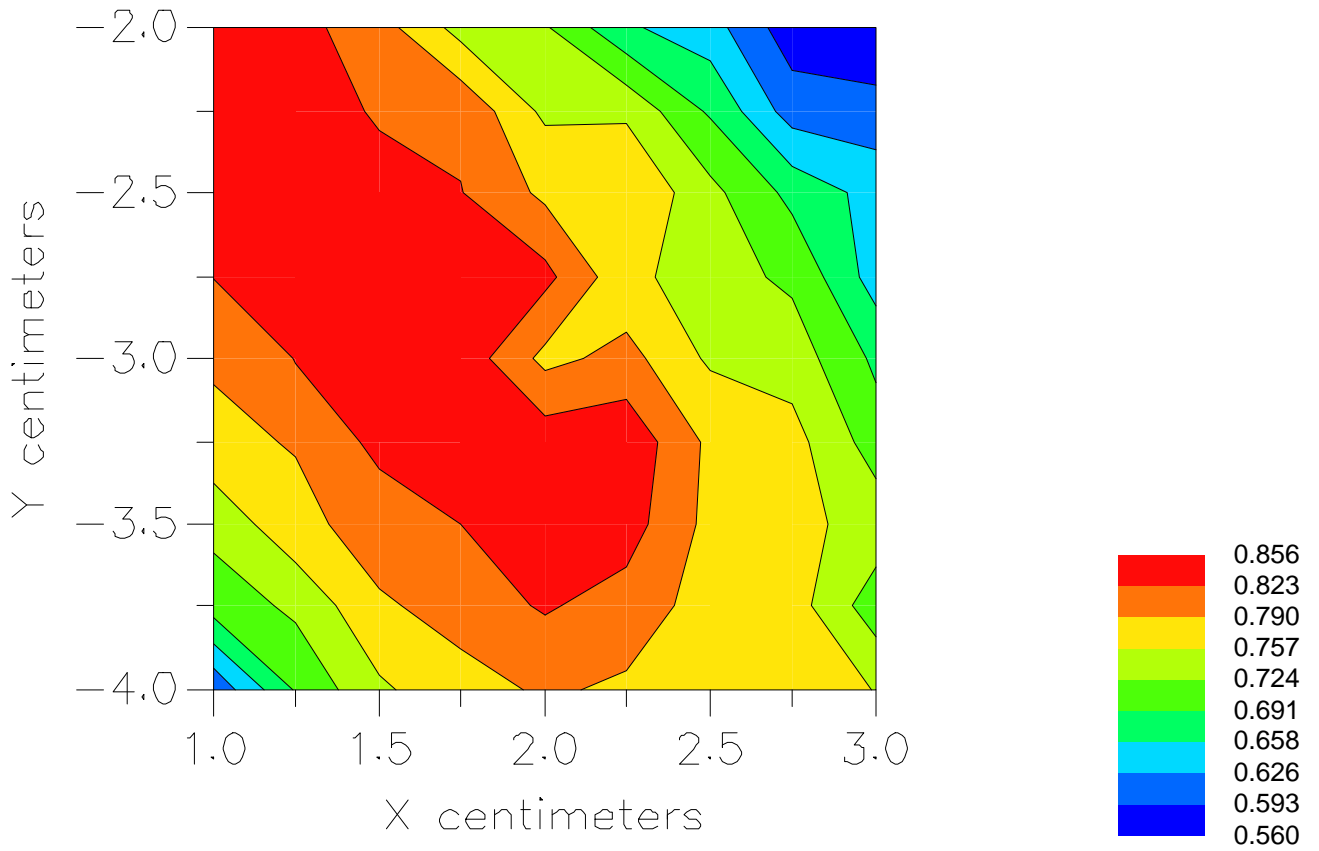
Head/Left Ear;ZOOM/SAR;PCTEST/E Field/0 DegreesBrain/43.400/0.900



File : 00050922\_ZOOM

Start : 9-May-100 05:02:47 pm End : 9-May-100 05:14:51 pm

SAMSUNG/A3LSCHN101/01E124F;835.89MHz;W;Helical/In;  
Head/Left Ear;ZOOM/SAR;PCTEST/E Field/0 DegreesBrain/43.400/0.900



File : c:/idx3/SYSTEM/SARMEAS3/data/Normal/00051006\_ZOOM.VLT  
Start : 10-May-100 11:04:38 am End : 10-May-100 11:14:13 am

Radio Type : SAMSUNG  
Model Number : A3LSCHN101  
Serial Number : 01E124F  
Frequency : 848.31 MHz  
Peak Trans. Pwr : 0.400 W  
Start Trans. Pwr: 0.400 W  
Antenna Type : Helical  
Antenna Posn. : Out  
Phantom Type : Head  
Phantom Posn. : Left Ear  
Scan Type : ZOOM/SAR  
Probe Name : PCTEST  
Field Type : E Field  
Orientation : 0 Degrees

Mixture Type = Brain  
Mixture Dielectric Constant = 43.400  
Mixture Conductivity = 0.900

Comment :  
SAMSUNG PHONE CDMA MODE  
CHAN 0777 SAR 26.0 dBm CONDUCTED  
FCC PART 22

Robot : PCTEST

Probe Offset = 0.25 cm  
Sensor Factor = 0.0108  
Conversion Factor = 0.788

PCTEST Amplifier Channel Settings : 0.166 0.135 0.132

Max Location : X = 2.250, Y = -4.250, Z = 0.000 (cm) Value = 10.023

Measured Values (volts) =  
9.593E-003 7.960E-003 7.157E-003 6.426E-003 5.690E-003 4.883E-003  
4.097E-003 3.294E-003 2.592E-003 2.022E-003 1.583E-003 1.334E-003  
1.319E-003 1.424E-003 1.664E-003 1.844E-003 1.960E-003 1.863E-003  
1.481E-003 1.225E-003 1.303E-003

Calc. Voltage @ Surface (Vs) = 0.0111

Voltage @ 1.00 cm (Vt) = 0.0064

Ave. Voltage (Vs+Vt)/2 = 0.0088

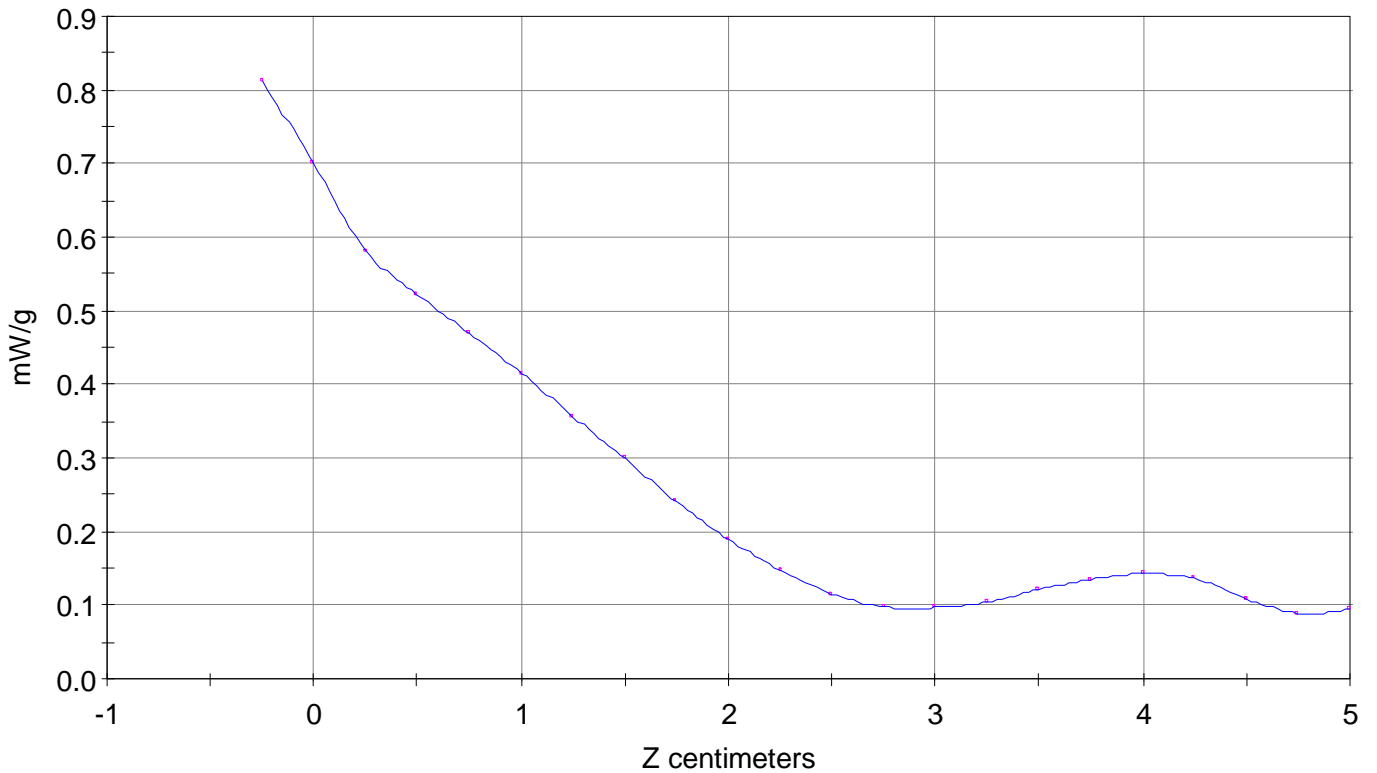
Ave. SAR over 1 g (mW/g) = 0.6395

### SAR Scan

File : 00051006\_ZOOM

Start : 10-May-100 11:04:38 am End : 10-May-100 11:14:13 am

SAMSUNG/A3LSCHN101/01E124F;848.31MHz;W;Helical/Out;  
Head/Left Ear;ZOOM/SAR;PCTEST/E Field/0 DegreesBrain/43.400/0.900

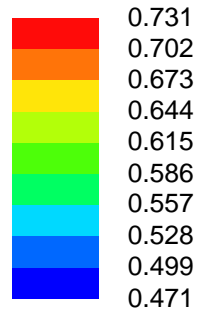
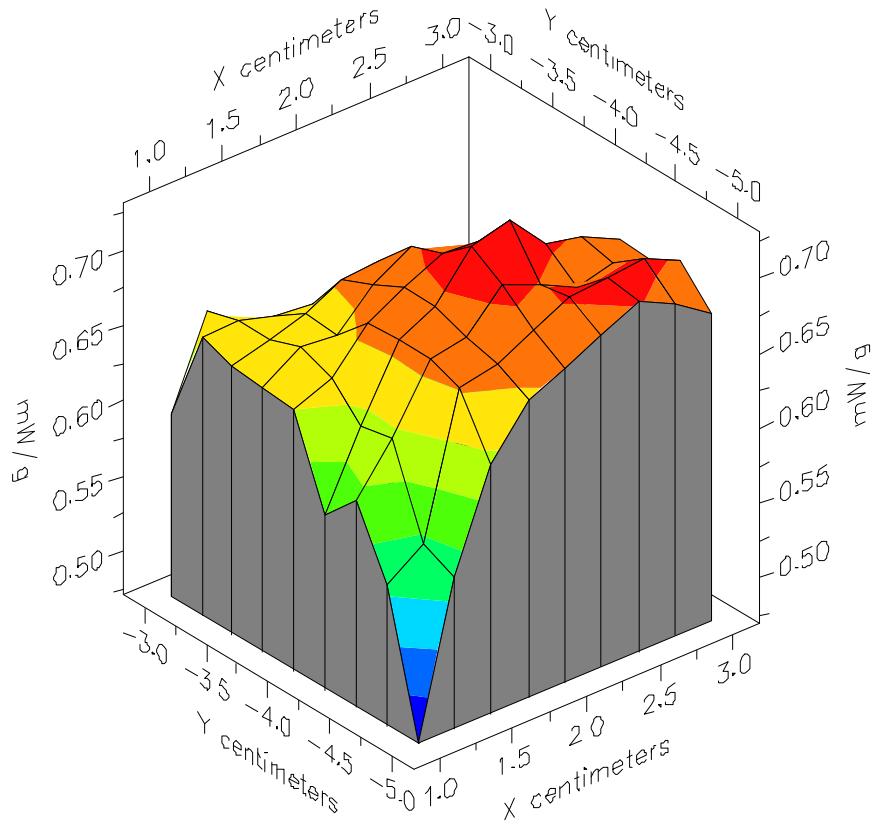


File : 00051006\_ZOOM

Start : 10-May-100 11:04:38 am End : 10-May-100 11:14:13 am

SAMSUNG/A3LSCHN101/01E124F;848.31MHz;W;Helical/Out;

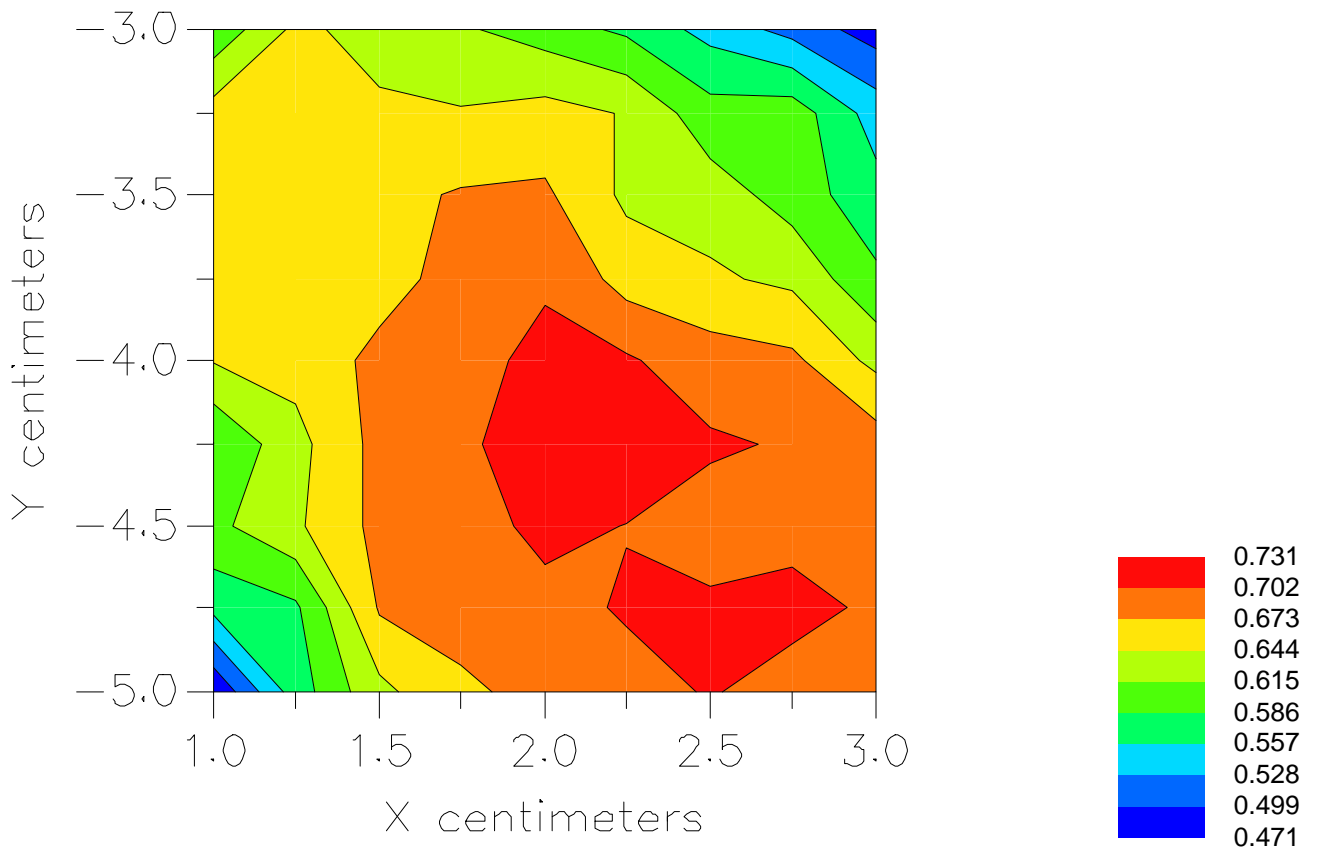
Head/Left Ear;ZOOM/SAR;PCTEST/E Field/0 DegreesBrain/43.400/0.900



File : 00051006\_ZOOM

Start : 10-May-100 11:04:38 am End : 10-May-100 11:14:13 am

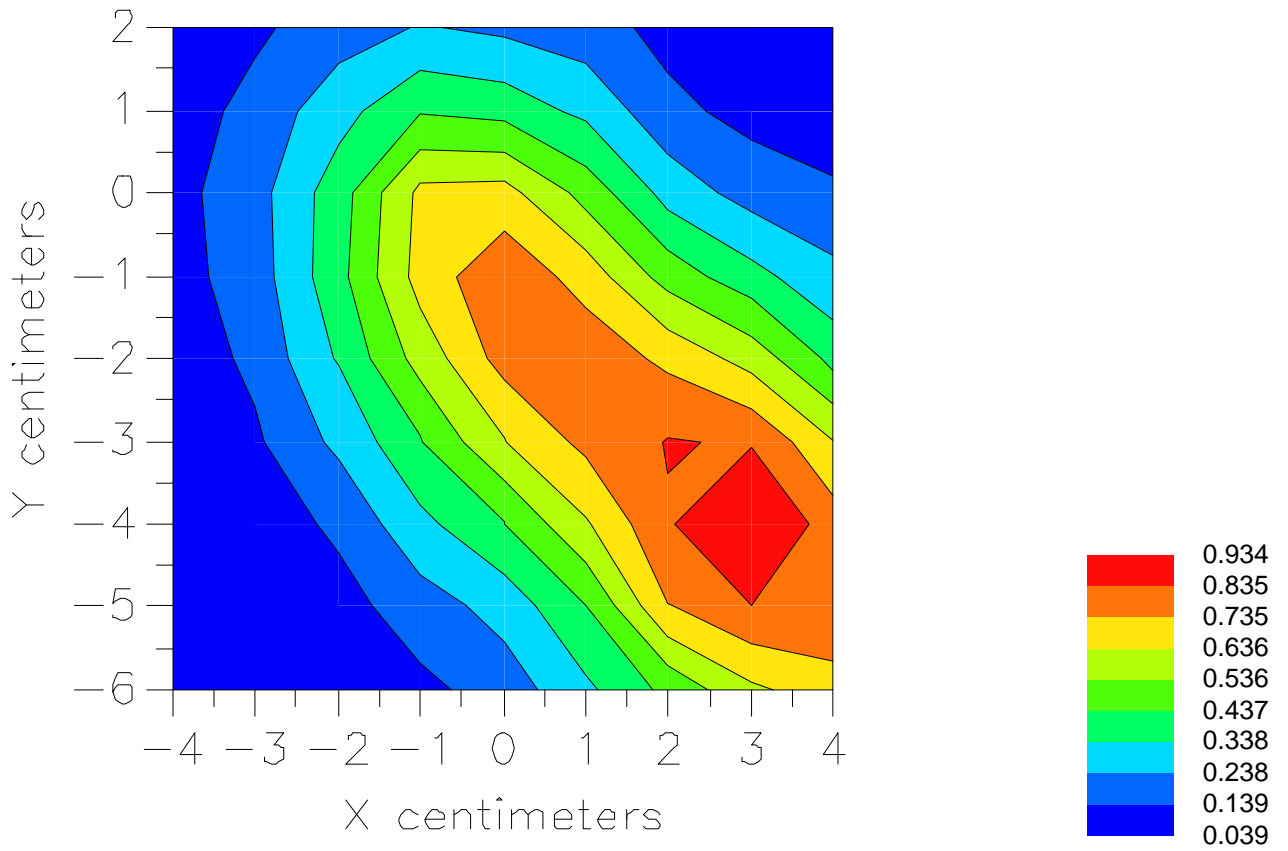
SAMSUNG/A3LSCHN101/01E124F;848.31MHz;W;Helical/Out;  
Head/Left Ear;ZOOM/SAR;PCTEST/E Field/0 DegreesBrain/43.400/0.900



File : 00051007\_AREA

Start : 10-May-100 11:16:29 am End : 10-May-100 11:25:00 am

SAMSUNG/A3LSCHN101/01E124F;848.31MHz;W;Helical/In;  
Head/Left Ear;AREA;PCTEST/E Field/0 DegreesBrain/43.400/0.900



File : c:/idx3/SYSTEM/SARMEAS3/data/Normal/00051007\_ZOOM.VLT  
Start : 10-May-100 11:25:01 am End : 10-May-100 11:34:33 am

Radio Type : SAMSUNG  
Model Number : A3LSCHN101  
Serial Number : 01E124F  
Frequency : 848.31 MHz  
Peak Trans. Pwr : 0.400 W  
Start Trans. Pwr : 0.400 W  
Antenna Type : Helical  
Antenna Posn. : In  
Phantom Type : Head  
Phantom Posn. : Left Ear  
Scan Type : ZOOM/SAR  
Probe Name : PCTEST  
Field Type : E Field  
Orientation : 0 Degrees

Mixture Type = Brain  
Mixture Dielectric Constant = 43.400  
Mixture Conductivity = 0.900

Comment :  
SAMSUNG PHONE CDMA MODE  
CHAN 0777 SAR 26.0 dBm CONDUCTED  
FCC PART 22

Robot : PCTEST

Probe Offset = 0.25 cm  
Sensor Factor = 0.0108  
Conversion Factor = 0.788

PCTEST Amplifier Channel Settings : 0.166 0.135 0.132

Max Location : X = 2.250, Y = -4.250, Z = 0.000 (cm) Value = 12.559

Measured Values (volts) =  
1.241E-002 1.019E-002 9.125E-003 8.149E-003 7.250E-003 6.278E-003  
5.251E-003 4.241E-003 3.308E-003 2.479E-003 1.948E-003 1.579E-003  
1.529E-003 1.662E-003 1.949E-003 2.194E-003 2.353E-003 2.300E-003  
1.787E-003 1.232E-003 1.127E-003

Calc. Voltage @ Surface (Vs) = 0.0145

Voltage @ 1.00 cm (Vt) = 0.0081

Ave. Voltage (Vs+Vt)/2 = 0.0113

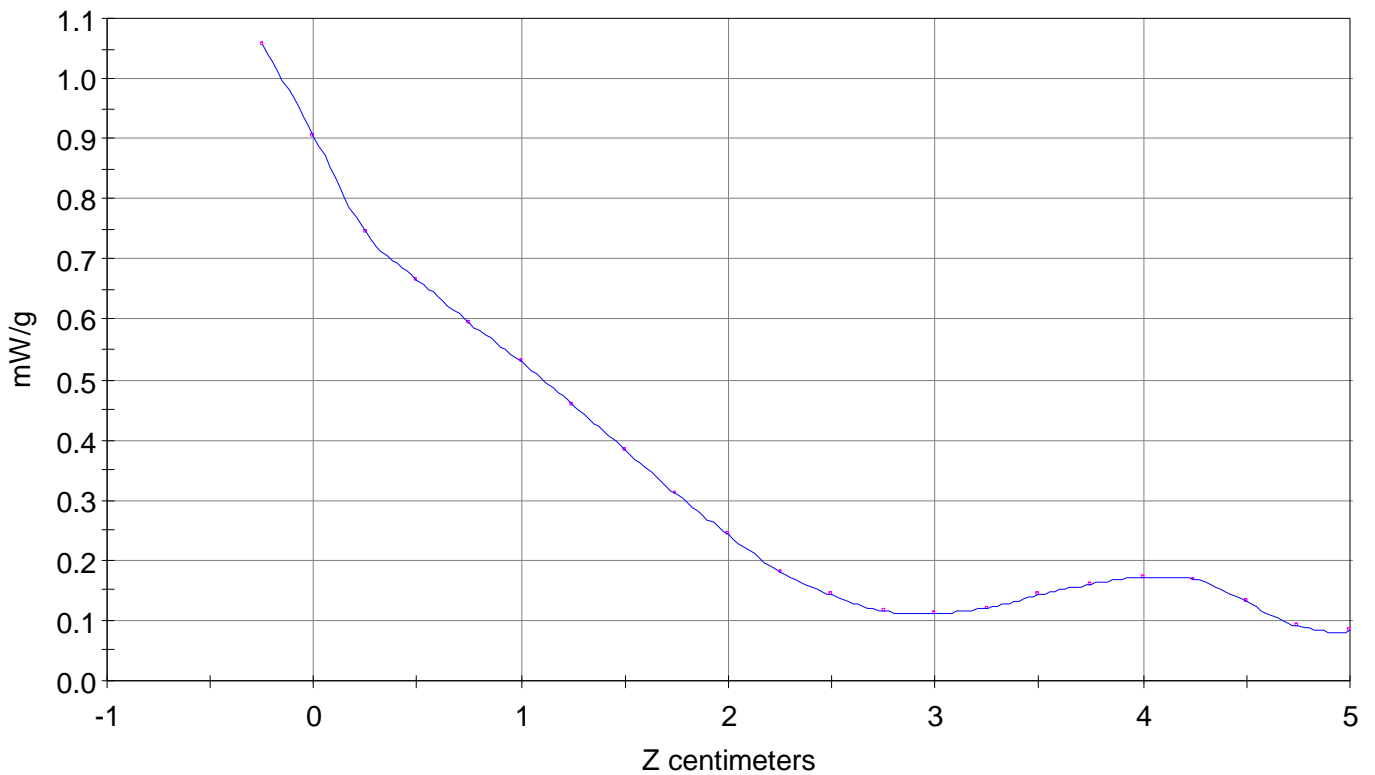
Ave. SAR over 1 g (mW/g) = 0.8256

### SAR Scan

File : 00051007\_ZOOM

Start : 10-May-100 11:25:01 am End : 10-May-100 11:34:33 am

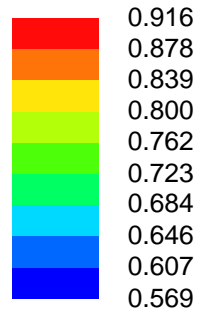
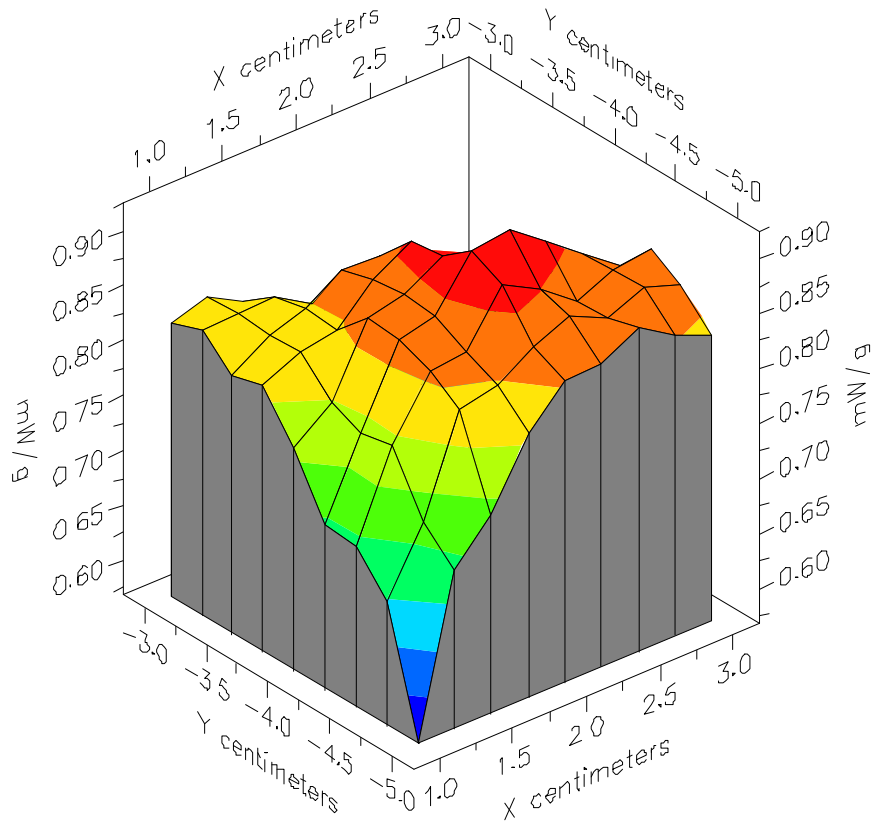
SAMSUNG/A3LSCHN101/01E124F;848.31MHz;W;Helical/In;  
Head/Left Ear;ZOOM/SAR;PCTEST/E Field/0 DegreesBrain/43.400/0.900



File : 00051007\_ZOOM

Start : 10-May-100 11:25:01 am End : 10-May-100 11:34:33 am

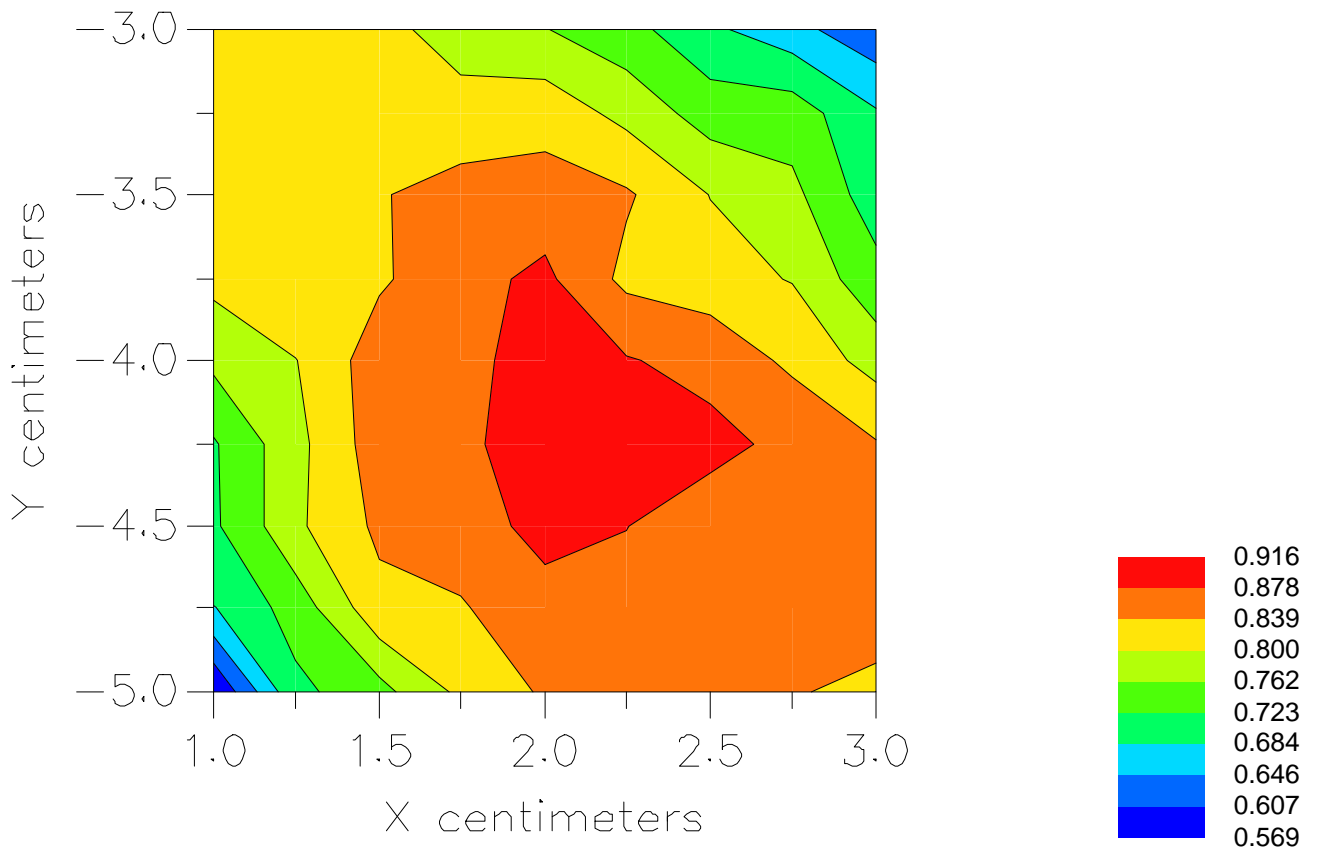
SAMSUNG/A3LSCHN101/01E124F;848.31MHz;W;Helical/In;  
Head/Left Ear;ZOOM/SAR;PCTEST/E Field/0 DegreesBrain/43.400/0.900



File : 00051007\_ZOOM

Start : 10-May-100 11:25:01 am End : 10-May-100 11:34:33 am

SAMSUNG/A3LSCHN101/01E124F;848.31MHz;W;Helical/In;  
Head/Left Ear;ZOOM/SAR;PCTEST/E Field/0 DegreesBrain/43.400/0.900



File : c:/idx3/SYSTEM/SARMEAS3/data/Normal/00051009\_ZOOM.VLT  
Start : 10-May-100 12:14:57 pm End : 10-May-100 12:24:30 pm

Radio Type : SAMSUNG  
Model Number : A3LSCHN101  
Serial Number : 01E124F  
Frequency : 824.70 MHz  
Peak Trans. Pwr : 0.400 W  
Start Trans. Pwr: 0.400 W  
Antenna Type : Helical  
Antenna Posn. : In  
Phantom Type : Head  
Phantom Posn. : Left Ear  
Scan Type : ZOOM/SAR  
Probe Name : PCTEST  
Field Type : E Field  
Orientation : 0 Degrees

Mixture Type = Brain  
Mixture Dielectric Constant = 43.400  
Mixture Conductivity = 0.900

Comment :  
SAMSUNG PHONE CDMA MODE  
CHAN 1013 SAR 26.0 dBm CONDUCTED  
FCC PART 22

Robot : PCTEST

Probe Offset = 0.25 cm  
Sensor Factor = 0.0108  
Conversion Factor = 0.788

PCTEST Amplifier Channel Settings : 0.166 0.135 0.132

Max Location : X = 2.250, Y = -4.250, Z = 0.000 (cm) Value = 11.844

Measured Values (volts) =  
1.171E-002 9.874E-003 8.741E-003 7.772E-003 6.907E-003 5.909E-003  
4.911E-003 3.865E-003 3.032E-003 2.216E-003 1.769E-003 1.428E-003  
1.407E-003 1.550E-003 1.799E-003 2.055E-003 2.206E-003 2.151E-003  
1.709E-003 1.091E-003 8.785E-004

Calc. Voltage @ Surface (Vs) = 0.0136

Voltage @ 1.00 cm (Vt) = 0.0078

Ave. Voltage (Vs+Vt)/2 = 0.0107

Ave. SAR over 1 g (mW/g) = 0.7783

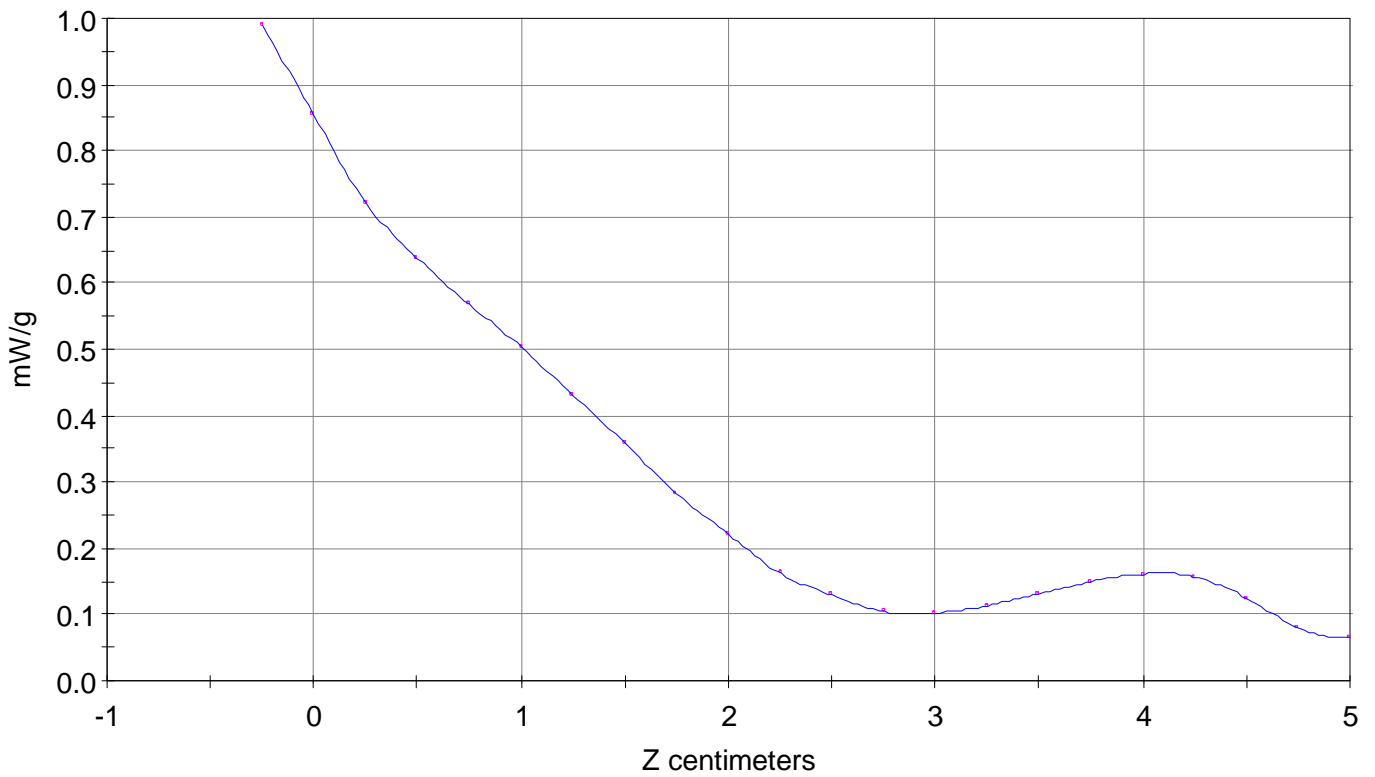
### SAR Scan

File : 00051009\_ZOOM

Start : 10-May-100 12:14:57 pm End : 10-May-100 12:24:30 pm

SAMSUNG/A3LSCHN101/01E124F;824.70MHz;W;Helical/In;

Head/Left Ear;ZOOM/SAR;PCTEST/E Field/0 DegreesBrain/43.400/0.900

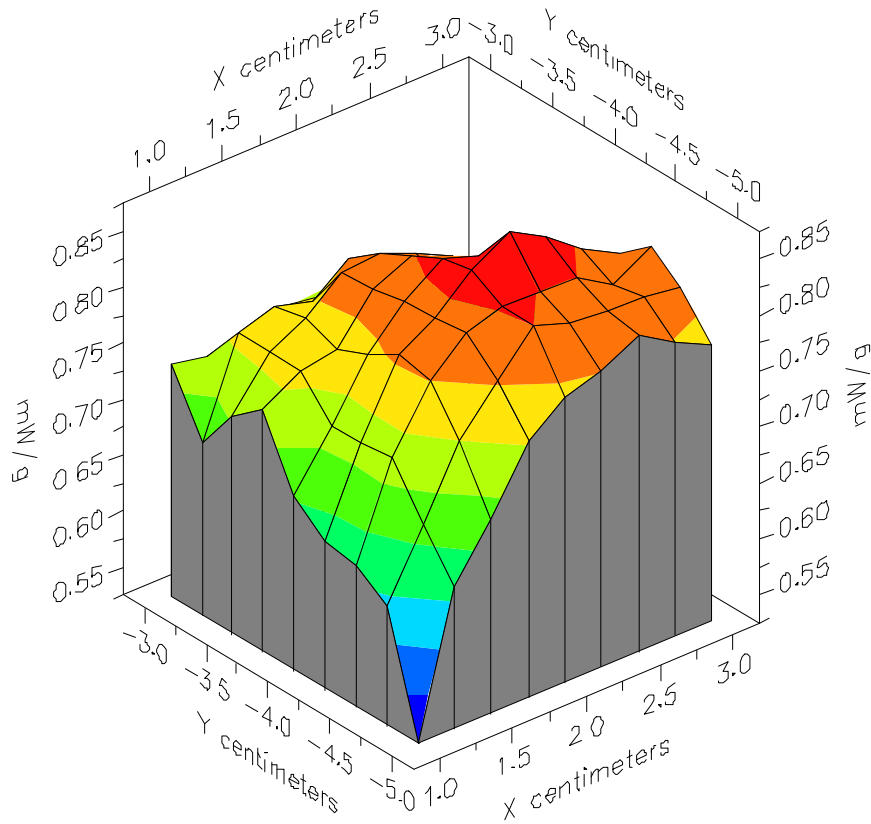


File : 00051009\_ZOOM

Start : 10-May-100 12:14:57 pm End : 10-May-100 12:24:30 pm

SAMSUNG/A3LSCHN101/01E124F;824.70MHz;W;Helical/In;

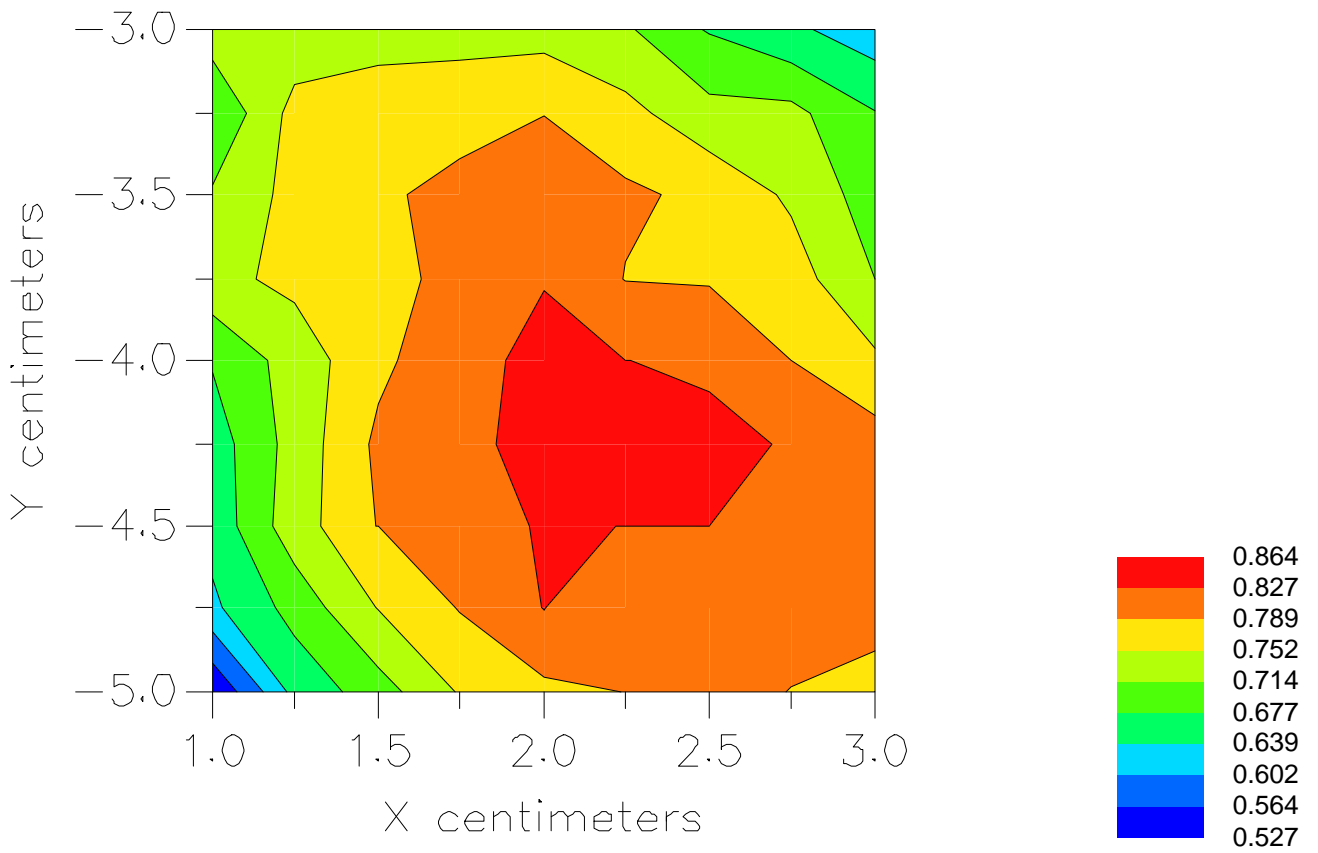
Head/Left Ear;ZOOM/SAR;PCTEST/E Field/0 DegreesBrain/43.400/0.900



File : 00051009\_ZOOM

Start : 10-May-100 12:14:57 pm End : 10-May-100 12:24:30 pm

SAMSUNG/A3LSCHN101/01E124F;824.70MHz;W;Helical/In;  
Head/Left Ear;ZOOM/SAR;PCTEST/E Field/0 DegreesBrain/43.400/0.900



File : c:/idx3/SYSTEM/SARMEAS3/data/Normal/00051010\_ZOOM.VLT  
Start : 10-May-100 12:38:40 pm End : 10-May-100 12:48:14 pm

Radio Type : SAMSUNG  
Model Number : A3LSCHN101  
Serial Number : 01E124F  
Frequency : 824.70 MHz  
Peak Trans. Pwr : 0.400 W  
Start Trans. Pwr : 0.400 W  
Antenna Type : Helical  
Antenna Posn. : Out  
Phantom Type : Head  
Phantom Posn. : Left Ear  
Scan Type : ZOOM/SAR  
Probe Name : PCTEST  
Field Type : E Field  
Orientation : 0 Degrees

Mixture Type = Brain  
Mixture Dielectric Constant = 43.400  
Mixture Conductivity = 0.900

Comment :  
SAMSUNG PHONE CDMA MODE  
CHAN 1013 SAR 26.0 dBm CONDUCTED  
FCC PART 22

Robot : PCTEST

Probe Offset = 0.25 cm  
Sensor Factor = 0.0108  
Conversion Factor = 0.788

PCTEST Amplifier Channel Settings : 0.166 0.135 0.132

Max Location : X = 2.250, Y = -4.250, Z = 0.000 (cm) Value = 11.063

Measured Values (volts) =  
1.105E-002 9.045E-003 8.058E-003 7.103E-003 6.201E-003 5.270E-003  
4.308E-003 3.462E-003 2.644E-003 2.079E-003 1.675E-003 1.405E-003  
1.438E-003 1.574E-003 1.811E-003 2.019E-003 2.084E-003 1.978E-003  
1.482E-003 1.197E-003 1.210E-003

Calc. Voltage @ Surface (Vs) = 0.0129

Voltage @ 1.00 cm (Vt) = 0.0071

Ave. Voltage (Vs+Vt)/2 = 0.0100

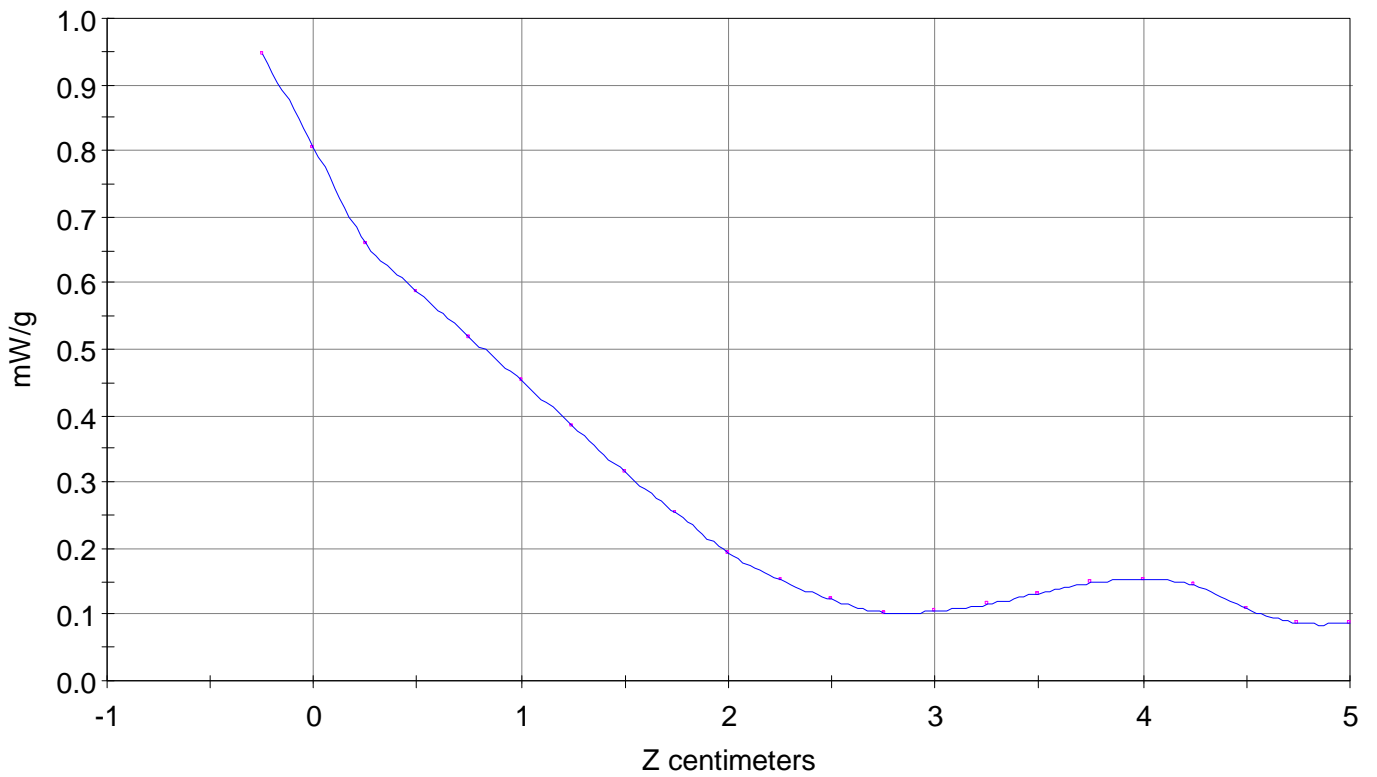
Ave. SAR over 1 g (mW/g) = 0.7313

### SAR Scan

File : 00051010\_ZOOM

Start : 10-May-100 12:38:40 pm End : 10-May-100 12:48:14 pm

SAMSUNG/A3LSCHN101/01E124F;824.70MHz;W;Helical/Out;  
Head/Left Ear;ZOOM/SAR;PCTEST/E Field/0 DegreesBrain/43.400/0.900

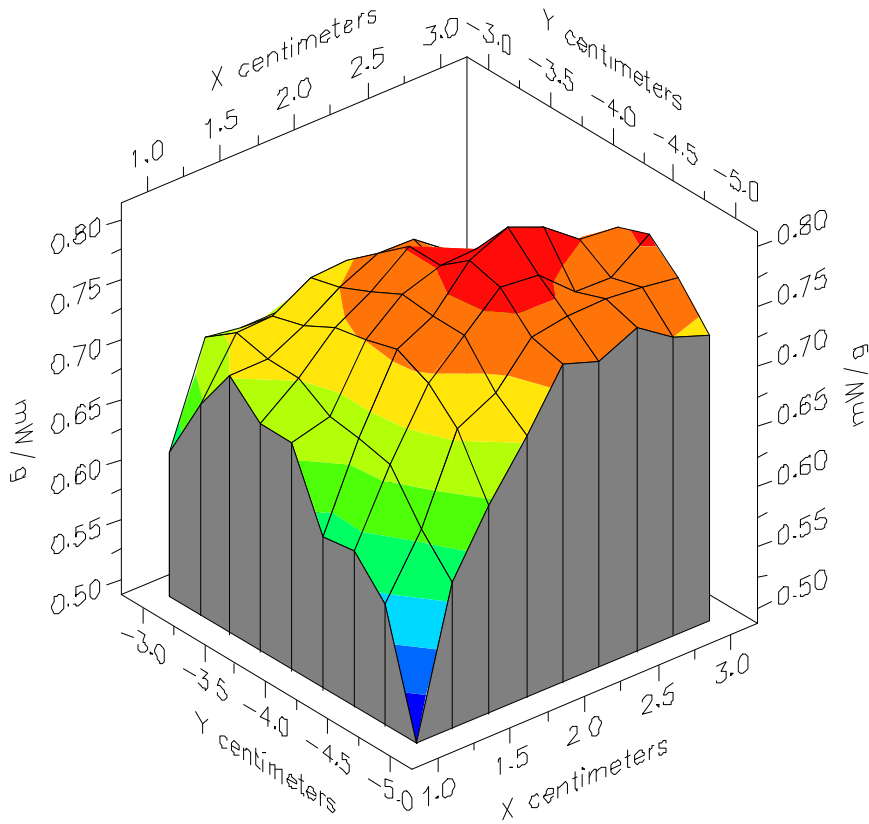


File : 00051010\_ZOOM

Start : 10-May-100 12:38:40 pm End : 10-May-100 12:48:14 pm

SAMSUNG/A3LSCHN101/01E124F;824.70MHz;W;Helical/Out;

Head/Left Ear;ZOOM/SAR;PCTEST/E Field/0 DegreesBrain/43.400/0.900



File : 00051010\_ZOOM

Start : 10-May-100 12:38:40 pm End : 10-May-100 12:48:14 pm

SAMSUNG/A3LSCHN101/01E124F;824.70MHz;W;Helical/Out;

Head/Left Ear;ZOOM/SAR;PCTEST/E Field/0 DegreesBrain/43.400/0.900

