

SAMSUNG FCC ID : A3LSCHL160 -- 835MHz CDMA Head SAR

DUT: SCH-L160; Serial: FD-077-A

Program Name: SCH-L160 CDMA Right (Job No. : FD-077)

Procedure Name: Cheek/Touch, Ch.0384, Intenna, Bat. Standard

Procedure Notes: Meas. Ambient Temp(celsius)-21.7; Tissue Temp(celsius)-22.5; Test Date-18/May/2006[OET Bulletin 65-Supplement C, July 2001]

Communication System: CDMA; Frequency: 836.52 MHz; Duty Cycle: 1:1

Medium parameters used: $f = 836.52$ MHz; $\sigma = 0.91$ mho/m; $\epsilon_r = 41.4$; $\rho = 1000$ kg/m³

Phantom section: Right Section

DASY4 Configuration:

- Probe: EX3DV4 - SN3537; ConvF(9.31, 9.31, 9.31); Calibrated: 2005-11-22
- Sensor-Surface: 4mm (Mechanical Surface Detection)
- Electronics: DAE3 Sn468; Calibrated: 2006-01-27
- Phantom: SAM PHANTOM #2; Type: SAM; Serial: TP-1248
- Measurement SW: DASY4, V4.6 Build 23; Postprocessing SW: SEMCAD, V1.8 Build 160

Cheek/Touch, Ch.0384, Intenna, Bat. Standard/Area Scan (51x71x1): Measurement grid:
dx=20mm, dy=20mm

Maximum value of SAR (interpolated) = 1.58 mW/g

Cheek/Touch, Ch.0384, Intenna, Bat. Standard/Zoom Scan (5x5x7)/Cube 0:

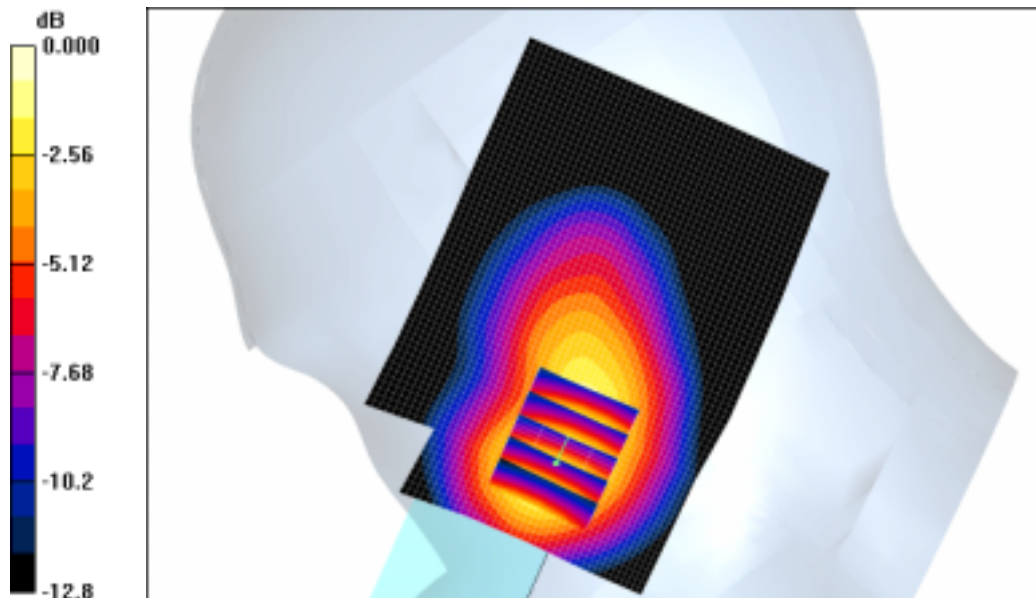
Measurement grid: dx=8mm, dy=8mm, dz=5mm

Reference Value = 11.7 V/m; Power Drift = -0.185 dB

Peak SAR (extrapolated) = 2.41 W/kg

SAR(1 g) = 1.39 mW/g

Maximum value of SAR (measured) = 1.50 mW/g



0 dB = 1.50mW/g

SAMSUNG FCC ID : A3LSCHL160 - - 835MHz CDMA Head SAR

DUT: SCH-L160; Serial: FD-077-A

Program Name: SCH-L160 CDMA Right (Job No. : FD-077)

Procedure Name: Ear/Tilt, Ch.0384, Intenna, Bat. Standard

Procedure Notes: Meas. Ambient Temp(celsius)-21.7; Tissue Temp(celsius)-22.5; Test Date-18/May/2006[OET Bulletin 65-Supplement C, July 2001]

Communication System: CDMA; Frequency: 836.52 MHz; Duty Cycle: 1:1

Medium parameters used: $f = 836.52$ MHz; $\sigma = 0.91$ mho/m; $\epsilon_r = 41.4$; $\rho = 1000$ kg/m³

Phantom section: Right Section

DASY4 Configuration:

- Probe: EX3DV4 - SN3537; ConvF(9.31, 9.31, 9.31); Calibrated: 2005-11-22
- Sensor-Surface: 4mm (Mechanical Surface Detection)
- Electronics: DAE3 Sn468; Calibrated: 2006-01-27
- Phantom: SAM PHANTOM #2; Type: SAM; Serial: TP-1248
- Measurement SW: DASY4, V4.6 Build 23; Postprocessing SW: SEMCAD, V1.8 Build 160

Ear/Tilt, Ch.0384, Intenna, Bat. Standard/Area Scan (51x71x1): Measurement grid:
dx=20mm, dy=20mm

Maximum value of SAR (interpolated) = 0.245 mW/g

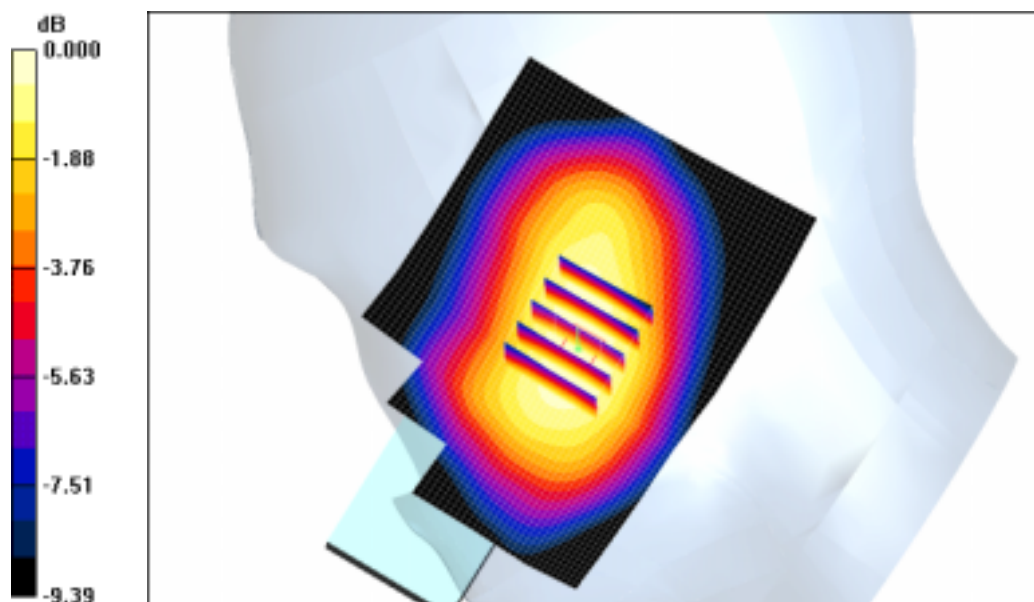
Ear/Tilt, Ch.0384, Intenna, Bat. Standard/Zoom Scan (5x5x7)/Cube 0: Measurement grid:
dx=8mm, dy=8mm, dz=5mm

Reference Value = 10.2 V/m; Power Drift = -0.157 dB

Peak SAR (extrapolated) = 0.296 W/kg

SAR(1 g) = 0.227 mW/g

Maximum value of SAR (measured) = 0.240 mW/g



0 dB = 0.240mW/g

SAMSUNG FCC ID : A3LSCHL160 - - 835MHz CDMA Head SAR

DUT: SCH-L160; Serial: FD-077-A

Program Name: SCH-L160 CDMA Left (Job No. : FD-077)

Procedure Name: Cheek/Touch, Ch.0384, Intenna, Bat. Standard

Procedure Notes: Meas. Ambient Temp(celsius)-21.7; Tissue Temp(celsius)-22.5;Test Date-18/May/2006[OET Bulletin 65-Supplement C, July 2001]

Communication System: CDMA; Frequency: 836.52 MHz;Duty Cycle: 1:1

Medium parameters used: f = 836.52 MHz; σ = 0.91 mho/m; ϵ_r = 41.4; ρ = 1000 kg/m³

Phantom section: Left Section

DASY4 Configuration:

- Probe: EX3DV4 - SN3537; ConvF(9.31, 9.31, 9.31); Calibrated: 2005-11-22
- Sensor-Surface: 4mm (Mechanical Surface Detection)
- Electronics: DAE3 Sn468; Calibrated: 2006-01-27
- Phantom: SAM PHANTOM #2; Type: SAM; Serial: TP-1248
- Measurement SW: DASY4, V4.6 Build 23; Postprocessing SW: SEMCAD, V1.8 Build 160

Cheek/Touch, Ch.0384, Intenna, Bat. Standard/Area Scan (51x71x1): Measurement grid:
dx=20mm, dy=20mm

Maximum value of SAR (interpolated) = 1.15 mW/g

Cheek/Touch, Ch.0384, Intenna, Bat. Standard/Zoom Scan 2 (5x5x7)/Cube 0:

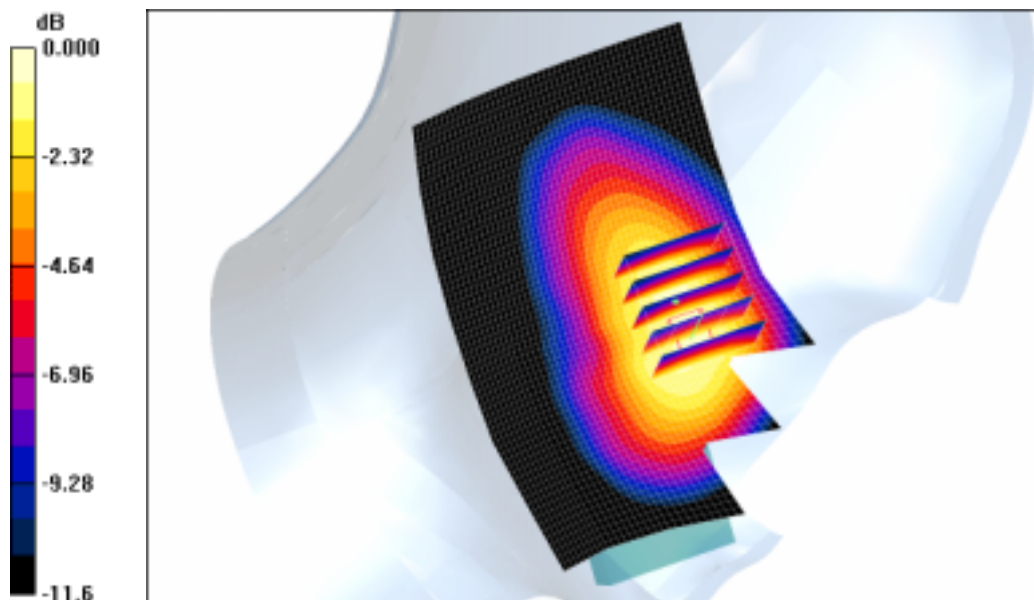
Measurement grid: dx=8mm, dy=8mm, dz=5mm

Reference Value = 10.7 V/m; Power Drift = 0.066 dB

Peak SAR (extrapolated) = 1.69 W/kg

SAR(1 g) = 1.1 mW/g

Maximum value of SAR (measured) = 1.20 mW/g



0 dB = 1.20mW/g

SAMSUNG FCC ID : A3LSCHL160 - - 835MHz CDMA Head SAR

DUT: SCH-L160; Serial: FD-077-A

Program Name: SCH-L160 CDMA Left (Job No. : FD-077)

Procedure Name: Ear/Tilt, Ch.0384, Intenna, Bat. Standard

Procedure Notes: Meas. Ambient Temp(celsius)-21.7; Tissue Temp(celsius)-22.5;Test Date-18/May/2006[OET Bulletin 65-Supplement C, July 2001]

Communication System: CDMA; Frequency: 836.52 MHz;Duty Cycle: 1:1

Medium parameters used: $f = 836.52$ MHz; $\sigma = 0.91$ mho/m; $\epsilon_r = 41.4$; $\rho = 1000$ kg/m³

Phantom section: Left Section

DASY4 Configuration:

- Probe: EX3DV4 - SN3537; ConvF(9.31, 9.31, 9.31); Calibrated: 2005-11-22
- Sensor-Surface: 4mm (Mechanical Surface Detection)
- Electronics: DAE3 Sn468; Calibrated: 2006-01-27
- Phantom: SAM PHANTOM #2; Type: SAM; Serial: TP-1248
- Measurement SW: DASY4, V4.6 Build 23; Postprocessing SW: SEMCAD, V1.8 Build 160

Ear/Tilt, Ch.0384, Intenna, Bat. Standard/Area Scan (51x71x1): Measurement grid:

dx=20mm, dy=20mm

Maximum value of SAR (interpolated) = 0.238 mW/g

Ear/Tilt, Ch.0384, Intenna, Bat. Standard/Zoom Scan (5x5x7)/Cube 0: Measurement

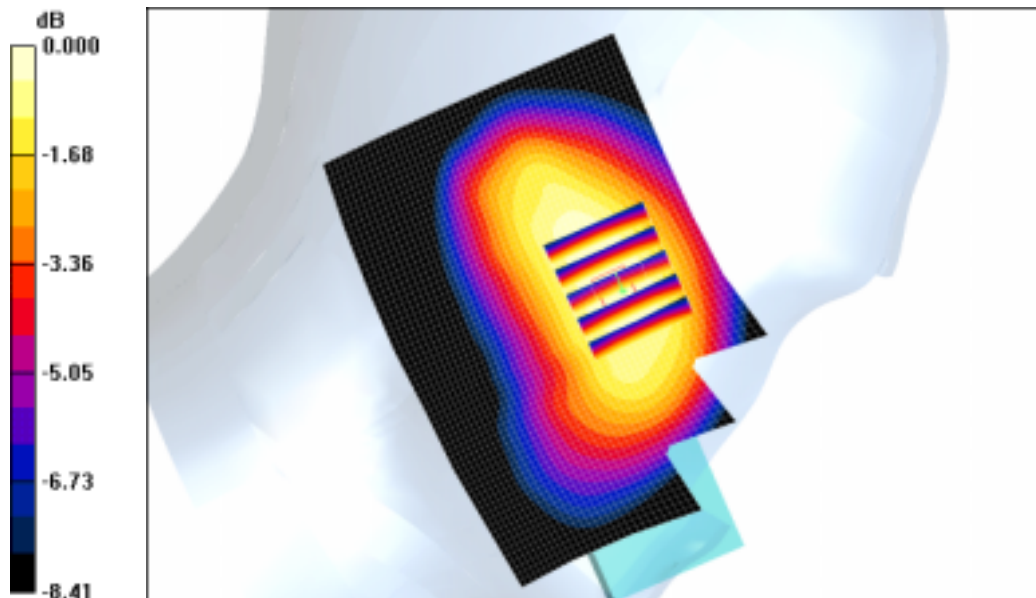
grid: dx=8mm, dy=8mm, dz=5mm

Reference Value = 9.73 V/m; Power Drift = -0.128 dB

Peak SAR (extrapolated) = 0.282 W/kg

SAR(1 g) = 0.215 mW/g

Maximum value of SAR (measured) = 0.226 mW/g



0 dB = 0.226mW/g

SAMSUNG FCC ID : A3LSCHL160 -- 835MHz CDMA Body SAR

DUT: SCH-L160(Body); Serial: FD-077-A

Program Name: SCH-L160 CDMA Body (Job No. : FD-077)

Procedure Name: Body, Ch. 0777, Ant. Intenna, Bat. Standard

Procedure Notes: Meas.Tissue Temp(celsius)-21.6, Ambient Temp-22.4Test Date-18/May/2006[OET Bulletin 65-Supplement C, July 2001]

Communication System: CDMA; Frequency: 848.31 MHz;Duty Cycle: 1:1

Medium parameters used: f = 848.31 MHz; σ = 0.98 mho/m; ϵ_r = 53.8; ρ = 1000 kg/m³

Phantom section: Flat Section

DASY4 Configuration:

- Probe: EX3DV4 - SN3537; ConvF(9.57, 9.57, 9.57); Calibrated: 2005-11-22
- Sensor-Surface: 4mm (Mechanical Surface Detection)
- Electronics: DAE3 Sn468; Calibrated: 2006-01-27
- Phantom: SAM PHANTOM #1; Type: SAM; Serial: TP-1247
- Measurement SW: DASY4, V4.6 Build 23; Postprocessing SW: SEMCAD, V1.8 Build 160

Body, Ch. 0777, Ant. Intenna, Bat. Standard/Area Scan (51x71x1): Measurement grid: dx=20mm, dy=20mm

Maximum value of SAR (interpolated) = 0.985 mW/g

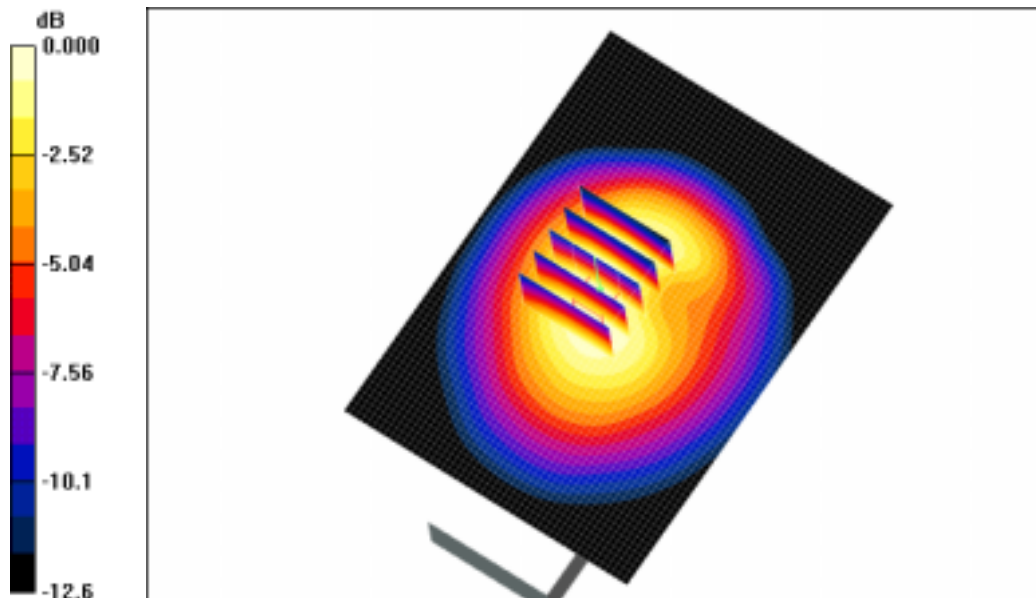
Body, Ch. 0777, Ant. Intenna, Bat. Standard/Zoom Scan (5x5x7)/Cube 0: Measurement grid: dx=8mm, dy=8mm, dz=5mm

Reference Value = 28.8 V/m; Power Drift = 0.005 dB

Peak SAR (extrapolated) = 1.32 W/kg

SAR(1 g) = 0.868 mW/g

Maximum value of SAR (measured) = 0.925 mW/g



0 dB = 0.925mW/g

SAMSUNG FCC ID : A3LSCHL160 - - 835MHz CDMA Head SAR

DUT: SCH-L160; Serial: FD-077-A

Program Name: SCH-L160 CDMA Right (Job No. : FD-077)

Procedure Name: Cheek/Touch, Ch.0384, Intenna, Bat. Standard

Procedure Notes: Meas. Ambient Temp(celsius)-21.7; Tissue Temp(celsius)-22.5; Test Date-18/May/2006[OET Bulletin 65-Supplement C, July 2001]

Communication System: CDMA; Frequency: 836.52 MHz; Duty Cycle: 1:1

Medium parameters used: $f = 836.52$ MHz; $\sigma = 0.91$ mho/m; $\epsilon_r = 41.4$; $\rho = 1000$ kg/m³

Phantom section: Right Section

DASY4 Configuration:

- Probe: EX3DV4 - SN3537; ConvF(9.31, 9.31, 9.31); Calibrated: 2005-11-22
- Sensor-Surface: 4mm (Mechanical Surface Detection)
- Electronics: DAE3 Sn468; Calibrated: 2006-01-27
- Phantom: SAM PHANTOM #2; Type: SAM; Serial: TP-1248
- Measurement SW: DASY4, V4.6 Build 23; Postprocessing SW: SEMCAD, V1.8 Build 160

Cheek/Touch, Ch.0384, Intenna, Bat. Standard/Area Scan (51x71x1): Measurement grid: dx=20mm, dy=20mm

Maximum value of SAR (interpolated) = 1.58 mW/g

Cheek/Touch, Ch.0384, Intenna, Bat. Standard/Zoom Scan (5x5x7)/Cube 0:

Measurement grid: dx=8mm, dy=8mm, dz=5mm

Reference Value = 11.7 V/m; Power Drift = -0.185 dB

Peak SAR (extrapolated) = 2.41 W/kg

SAR(1 g) = 1.39 mW/g

Maximum value of SAR (measured) = 1.50 mW/g



SAMSUNG FCC ID : A3LSCHL160 -- 835MHz CDMA Body SAR

DUT: SCH-L160(Body); Serial: FD-077-A

Program Name: SCH-L160 CDMA Body (Job No. : FD-077)

Procedure Name: Body, Ch. 0777, Ant. Intenna, Bat. Standard

Procedure Notes: Meas.Tissue Temp(celsius)-21.6, Ambient Temp-22.4 Test Date-18/May/2006 [OET Bulletin 65-Supplement C, July 2001]

Communication System: CDMA; Frequency: 848.31 MHz; Duty Cycle: 1:1

Medium parameters used: $f = 848.31$ MHz; $\sigma = 0.98$ mho/m; $\epsilon_r = 53.8$; $\rho = 1000$ kg/m³

Phantom section: Flat Section

DASY4 Configuration:

- Probe: EX3DV4 - SN3537; ConvF(9.57, 9.57, 9.57); Calibrated: 2005-11-22
- Sensor-Surface: 4mm (Mechanical Surface Detection)
- Electronics: DAE3 Sn468; Calibrated: 2006-01-27
- Phantom: SAM PHANTOM #1; Type: SAM; Serial: TP-1247
- Measurement SW: DASY4, V4.6 Build 23; Postprocessing SW: SEMCAD, V1.8 Build 160

Body, Ch. 0777, Ant. Intenna, Bat. Standard/Area Scan (51x71x1): Measurement grid: dx=20mm, dy=20mm

Maximum value of SAR (interpolated) = 0.985 mW/g

Body, Ch. 0777, Ant. Intenna, Bat. Standard/Zoom Scan (5x5x7)/Cube 0: Measurement grid: dx=8mm, dy=8mm, dz=5mm

Reference Value = 28.8 V/m; Power Drift = 0.005 dB

Peak SAR (extrapolated) = 1.32 W/kg

SAR(1 g) = 0.868 mW/g

Maximum value of SAR (measured) = 0.925 mW/g

