



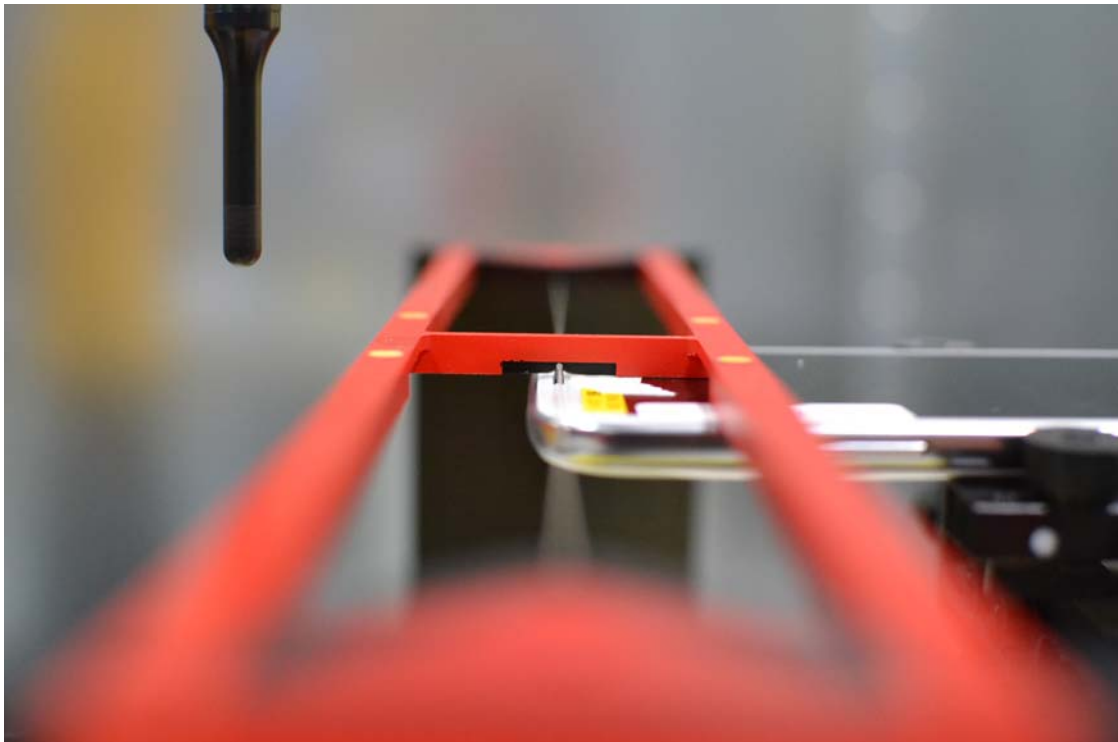
## 17. TEST PHOTOGRAPHS

See following Attached Pages for setup photographs.



|  |   |                                       |   |  |
|--|---|---------------------------------------|---|--|
| <b>FCC ID:</b> A3LSCHI605                |  <b>PCTEST</b><br>ENGINEERING LABORATORY, INC. | <b>HAC (RF EMISSIONS) TEST REPORT</b> |  | <b>Reviewed by:</b><br>Quality Manager |
| <b>HAC Filename:</b><br>0Y1209101318.A3L | <b>Test Dates:</b><br>Aug. 30 - Sept. 4, 2012   | <b>EUT Type:</b><br>Portable Handset  |   | Page 90 of 92                          |

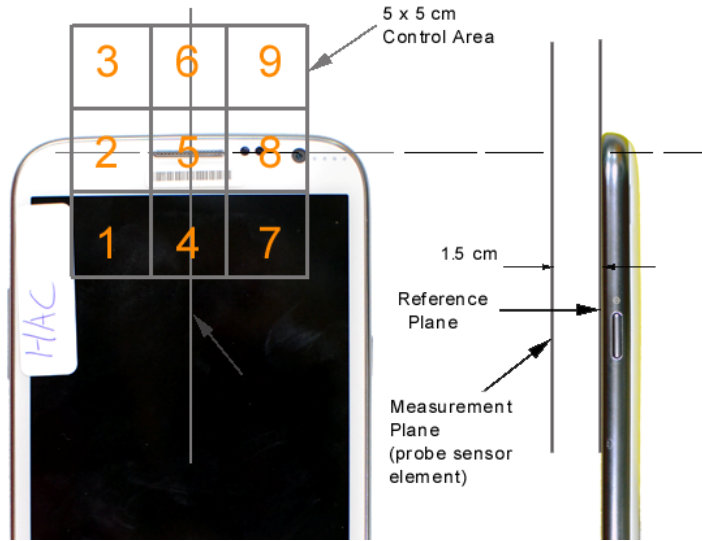


**Figure 17-1**  
**Ear Reference Point HAC Phantom Alignment**



**Figure 17-2**  
**HAC Phantom Plane Alignment**

|                                   |   |                                |  |
|-----------------------------------|---|--------------------------------|--|
| FCC ID: A3LSCHI605                |  | HAC (RF EMISSIONS) TEST REPORT | <br>Reviewed by:<br>Quality Manager |
| HAC Filename:<br>0Y1209101318.A3L | Test Dates:<br>Aug. 30 - Sept. 4, 2012  | EUT Type:<br>Portable Handset  | Page 91 of 92  |



**Figure 17-3**  
5x5 Scan grid above WD



**Figure 17-4**  
E-Field WD Scan overlay



**Figure 17-5**  
H-Field WD Scan overlay

|                                   |  |                                |         |                                 |
|-----------------------------------|--|--------------------------------|---------|---------------------------------|
| FCC ID: A3LSCHI605                | PCTEST<br>ENGINEERING LABORATORY, INC. | HAC (RF EMISSIONS) TEST REPORT | SAMSUNG | Reviewed by:<br>Quality Manager |
| HAC Filename:<br>0Y1209101318.A3L | Test Dates:<br>Aug. 30 - Sept. 4, 2012 | EUT Type:<br>Portable Handset  |         | Page 92 of 92                   |