

# SAMSUNG FCC ID: A3LSCHA565 -- FM Head SAR

SAM Phantom; Right Hand Section; Probe:ET3DV6 - SN1560; ConvF(6.78,6.78,6.78)

Med. Parameters 835 MHz Brain:  $\sigma = 0.89$  mho/m  $\epsilon_r = 43.5$   $\rho = 1.00$  g/cm<sup>3</sup>; Antenna Position -- Out; Crest Factor 1.0

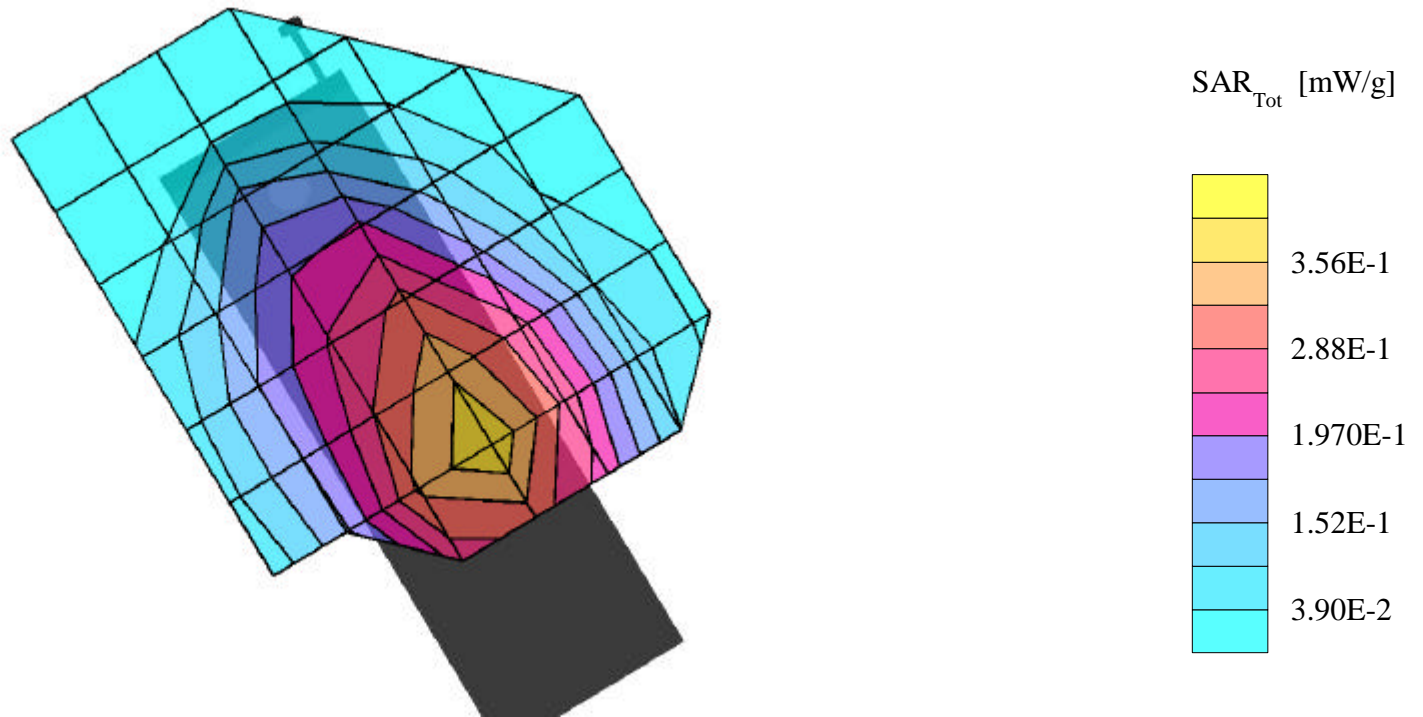
**SAR (1g): 0.383 mW/g, SAR (10g): 0.292 mW/g**

SAMSUNG Tri Mode; Model: SCH-A565

AMPS Mode, Ch.383 [836.49MHz]; Extended Battery: Ambient Temp. = 22.3°C / Measured Tissue Temp. = 22.1°C

Conducted Power = 26.0dBm; Right Head SAR, EAR/ 15 Degrees Tilt position

Test Date -- 04/05/2002 [FCC/OET Bulletin 65 - Supplement C, July 2001]



# SAMSUNG FCC ID: A3LSCHA565 -- FM Head SAR

SAM Phantom; Left Hand Section; Probe:ET3DV6 - SN1560; ConvF(6.78,6.78,6.78)

Med. Parameters 835 MHz Brain:  $\sigma = 0.89$  mho/m  $\epsilon_r = 43.5$   $\rho = 1.00$  g/cm<sup>3</sup>; Antenna Position -- Out; Crest Factor 1.0

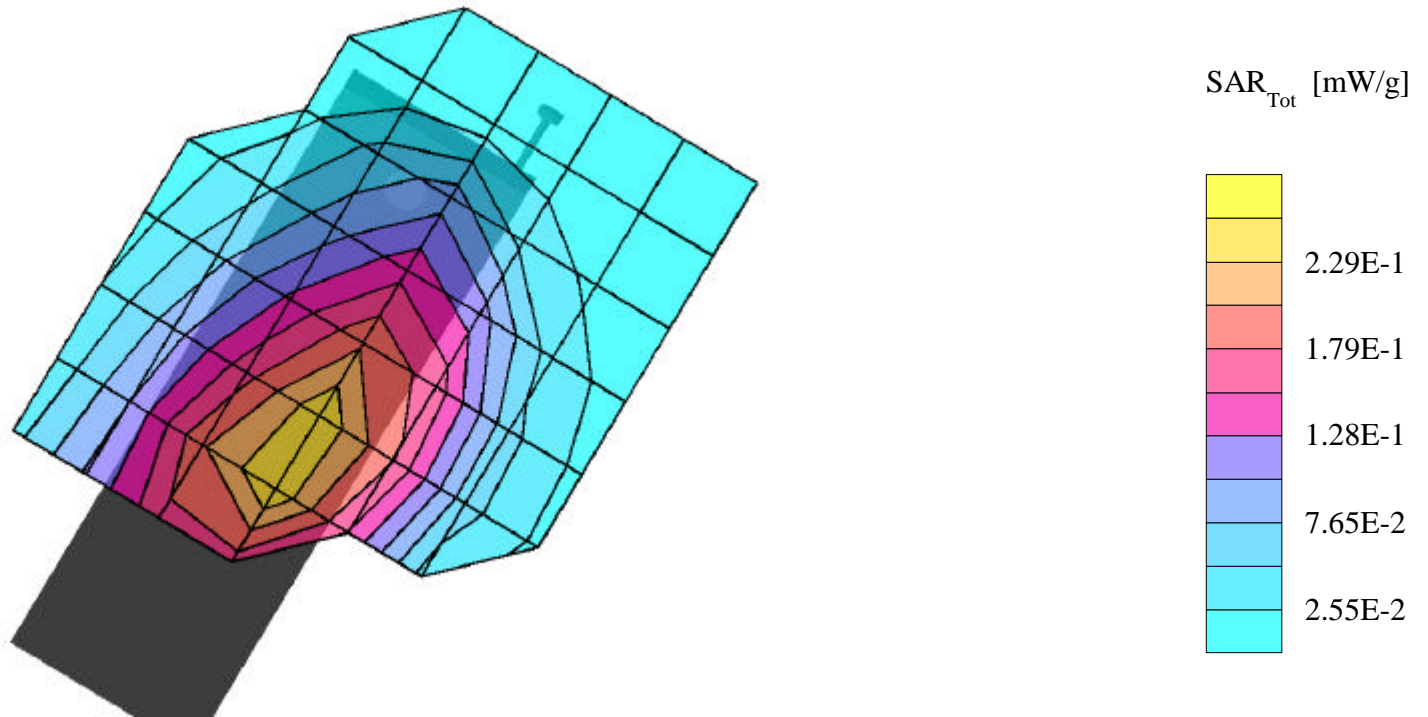
**SAR (1g): 0.241 mW/g, SAR (10g): 0.174 mW/g**

SAMSUNG Tri Mode; Model: SCH-A565

AMPS Mode, Ch.383 [836.49MHz]; Extended Battery: Ambient Temp. = 22.3°C / Measured Tissue Temp. = 22.1°C

Conducted Power = 26.0dBm; Left Head SAR, EAR/ 15 Degrees Tilt position

Test Date -- 04/05/2002 [FCC/OET Bulletin 65 - Supplement C, July 2001]



# SAMSUNG FCC ID: A3LSCHA565 --CDMA Head SAR

SAM Phantom; Right Hand Section; Probe:ET3DV6 - SN1560; ConvF(6.78,6.78,6.78)

Med. Parameters 835 MHz Brain:  $\sigma = 0.89$  mho/m  $\epsilon_r = 43.5$   $\rho = 1.00$  g/cm<sup>3</sup>; Antenna Position -- Out; Crest Factor 1.0

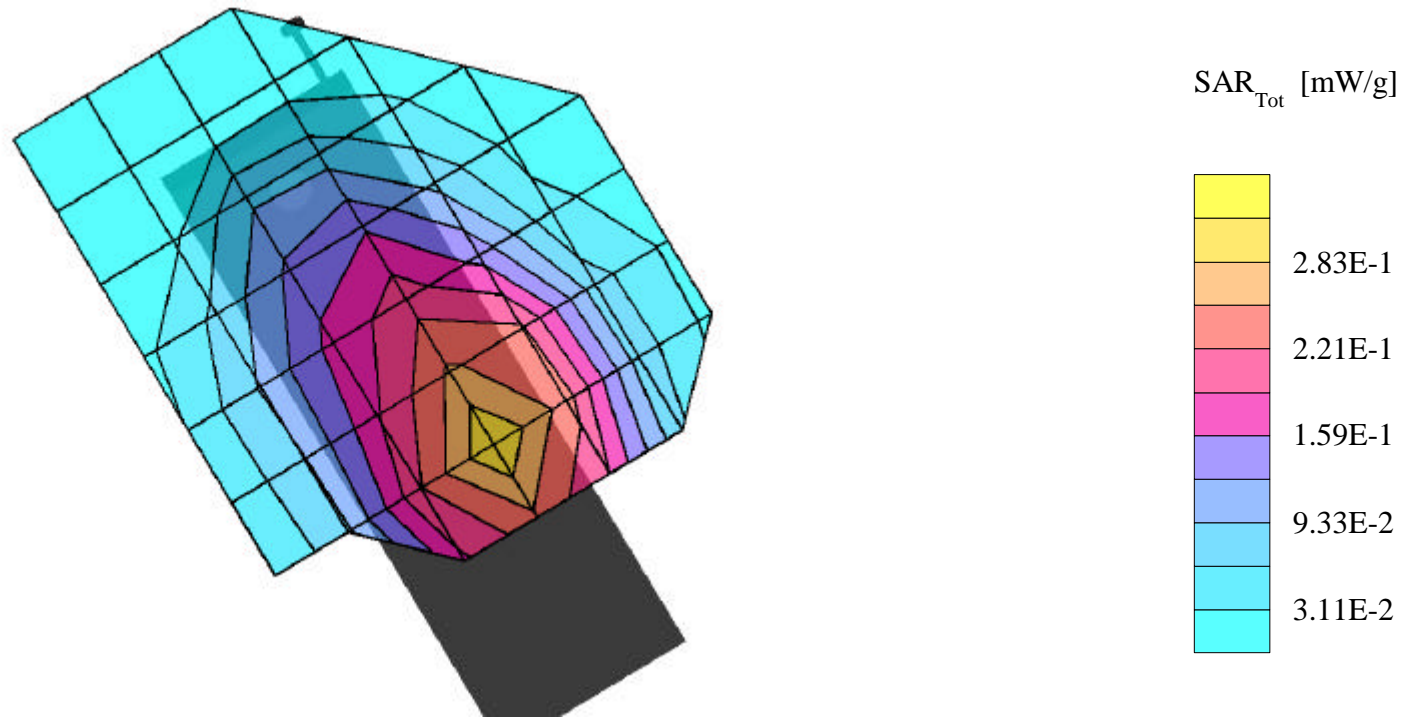
SAR (1g): 0.287 mW/g, SAR (10g): 0.212 mW/g

SAMSUNG Tri Mode Model: SCH-A565

Cellular CDMA Mode, Ch.0363 [835.89MHz]; Extended Battery; Ambient Temp. = 22.3°C/ Meas. Tissue Temp. = 22.1°C

Conducted Power = 24.5dBm; Right Hand Phantom, EAR/15 Degrees Tilt position

Test Date --04/05/2002 [FCC/OET Bulletin 65 - Supplement C, July 2001]



# SAMSUNG FCC ID: A3LSCHA565 --CDMA Head SAR

SAM Phantom; Left Hand Section; Probe:ET3DV6 - SN1560; ConvF(6.78,6.78,6.78)

Med. Parameters 835 MHz Brain:  $\sigma = 0.89$  mho/m  $\epsilon_r = 43.5$   $\rho = 1.00$  g/cm<sup>3</sup>; Antenna Position -- Out; Crest Factor 1.0

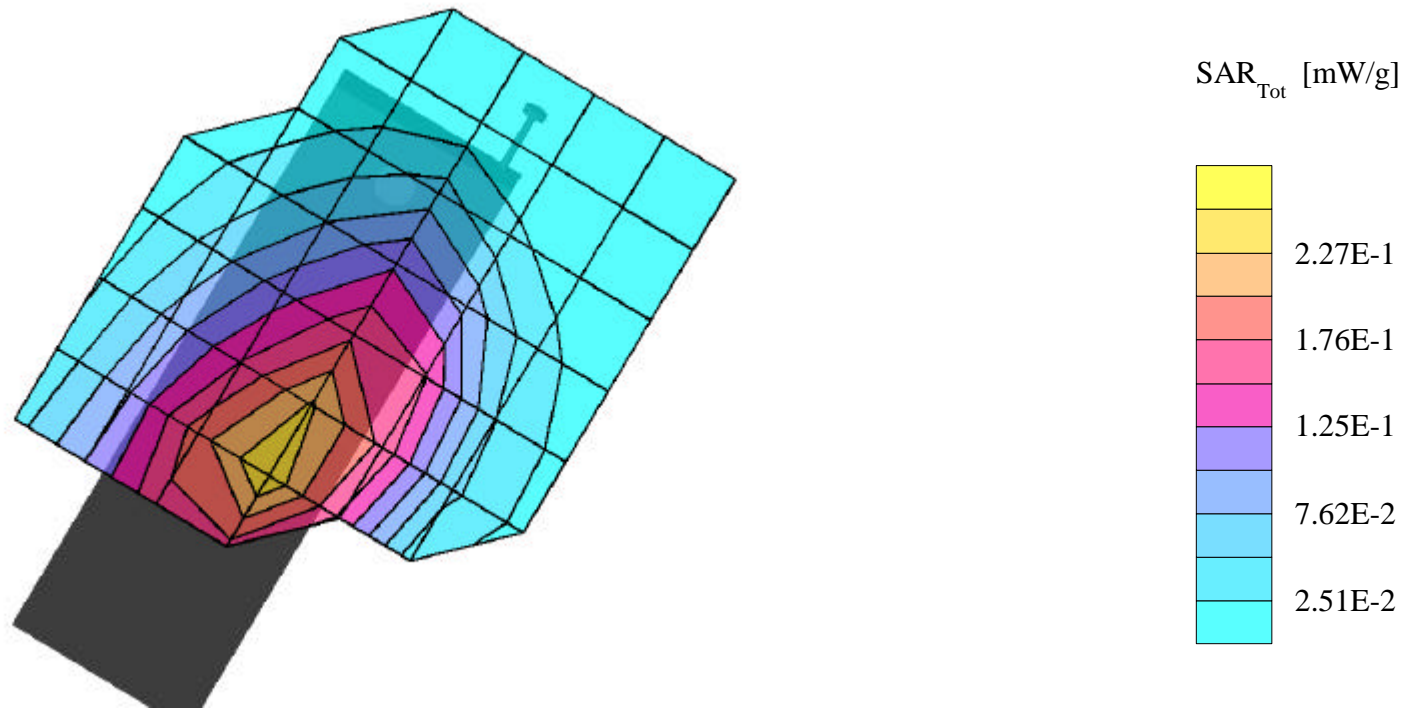
SAR (1g): 0.239 mW/g, SAR (10g): 0.172 mW/g

SAMSUNG Tri Mode Model: SCH-A565

Cellular CDMA Mode, Ch.0363 [835.89MHz]; Extended Battery; Ambient Temp. = 22.3°C / Meas. Tissue Temp. = 22.1°C

Conducted Power = 24.5dBm; Left Head Phantom, EAR/15 Degrees Tilt position

Test Date -04/05/2002 [FCC/OET Bulletin 65 - Supplement C, July 2001]



# SAMSUNG FCC ID: A3LSCHA565 -- FM Body SAR

SAM Phantom; Flat Section; Probe:ET3DV6 - SN1560\_; ConvF(6.52,6.52,6.52)

Med. Parameters 835 MHz Muscle:  $\sigma = 0.98$  mho/m  $\epsilon_r = 55.0$   $\rho = 1.00$  g/cm<sup>3</sup>; Antenna Position -- Out; Crest Factor 1.0

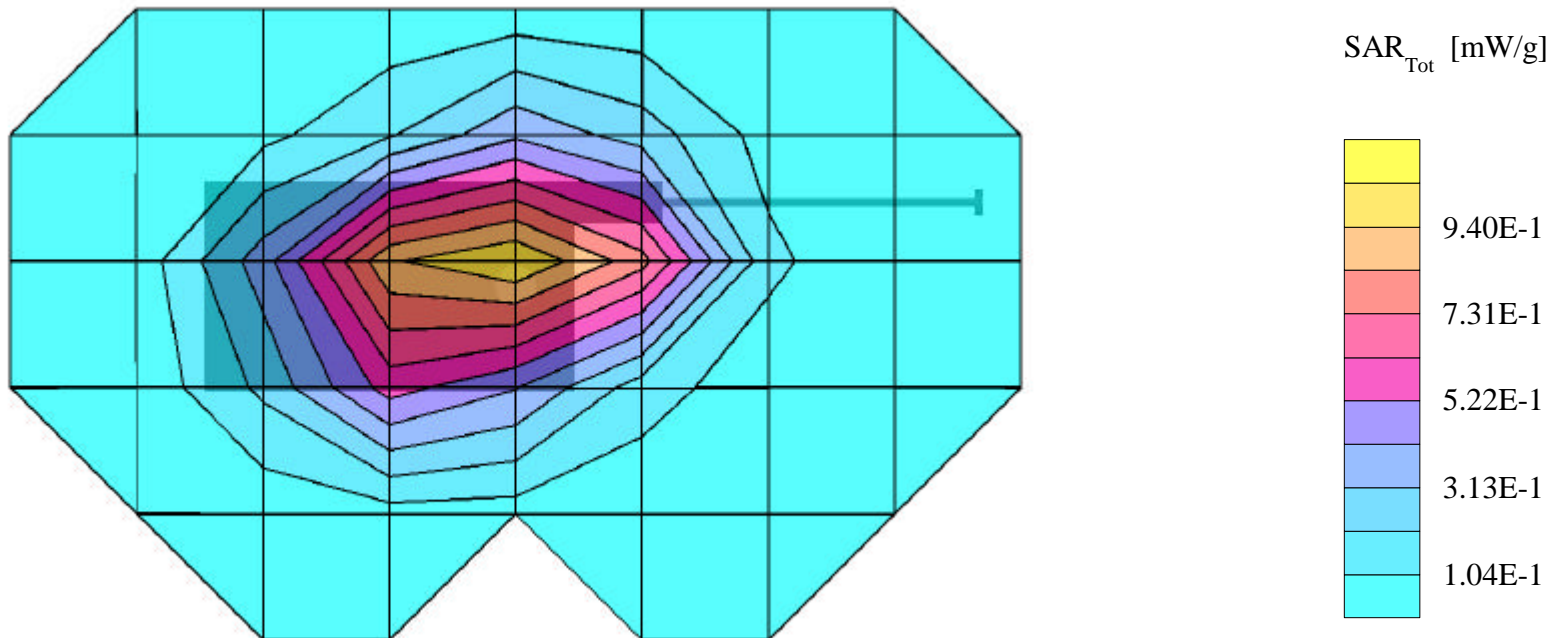
**SAR (1g): 1.134 mW/g, SAR (10g): 0.723 mW/g**

SAMSUNG Tri Mode Model: SCH-A565

FM Mode, Ch.0799 [848.97MHz]; Standard Battery; Flip = closed; Ambient Temp. = 22.1°C / Measured Tissue Temp. = 22.0°C

Conducted Power = 26.0 dBm; Spacing = 1.5cm from EUT (antenna side) to flat phantom; No BeltClip/No Holster

Test Date -- 04/07/2002 [FCC/OET Bulletin 65 - Supplement C, July 2001]



# SAMSUNG FCC ID: A3LSCHA565 -- CDMA Body SAR

SAM Phantom; Flat Section; Probe:ET3DV6 - SN1560\_; ConvF(6.52,6.52,6.52)

Med. Parameters 835 MHz Muscle:  $\sigma = 0.98$  mho/m  $\epsilon_r = 55.0$   $\rho = 1.00$  g/cm<sup>3</sup>; Antenna Position -- Out; Crest Factor 1.0

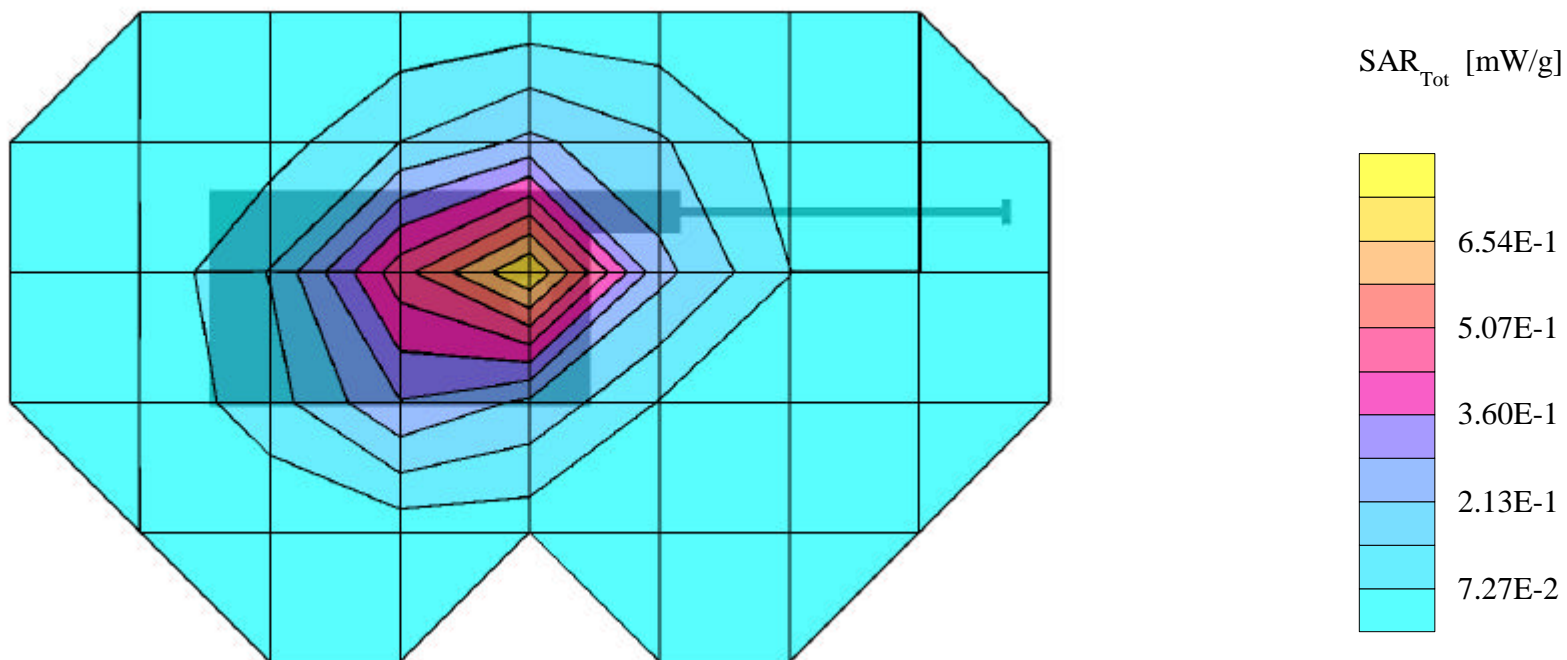
**SAR (1g): 0.751 mW/g, SAR (10g): 0.246 mW/g**

SAMSUNG Tri Mode Model: SCH-A565

CDMA Mode, Ch.0777 [848.31MHz]; Standard Battery; Flip = closed; Ambient Temp. = 22.1°C / Measured Tissue Temp. = 22.0°C

Conducted Power = 26.0 dBm; Spacing = 1.5cm from EUT (antenna side) to flat phantom; No BeltClip/No Holster

Test Date -- 04/07/2002 [FCC/OET Bulletin 65 - Supplement C, July 2001]



# SAMSUNG FCC ID: A3LSCHA565 -- PCS Body SAR

SAM Phantom; Flat Section; Probe:ET3DV6 - SN1560\_; ConvF(4.70,4.70,4.70)

Med. Parameters 1900 MHz Muscle:  $\sigma = 1.55$  mho/m  $\epsilon_r = 53.9$   $\rho = 1.00$  g/cm<sup>3</sup>; Antenna Position -- Out; Crest Factor 1.0

**SAR (1g): 1.321 mW/g, SAR (10g): 0.693 mW/g**

SAMSUNG Tri Mode Model: SCH-A565

PCS CDMA Mode, Ch.0600 [1880.00Hz]; Standard Battery; Flip = closed; Ambient Temp. = 22.1°C / Measured Tissue Temp. = 21.9°C

Conducted Power = 23.0 dBm; Spacing = 1.5cm from EUT (antenna side) to flat phantom; No BeltClip/No Holster

Test Date -- 04/07/2002 [FCC/OET Bulletin 65 - Supplement C, July 2001]

