

# FCC ID: A3LSCH620

# Body SAR

Generic Twin Phantom; Flat Section;

Probe: ET3DV5 - SN1368 -- Probe Cal Date 2/99

Medium Parameters 835 Muscle:  $\sigma = 0.95$  mho/m  $\epsilon_r = 56.2$   $\rho = 1.00$  g/cm<sup>3</sup>

Antenna Position -- In; Crest Factor 1.0

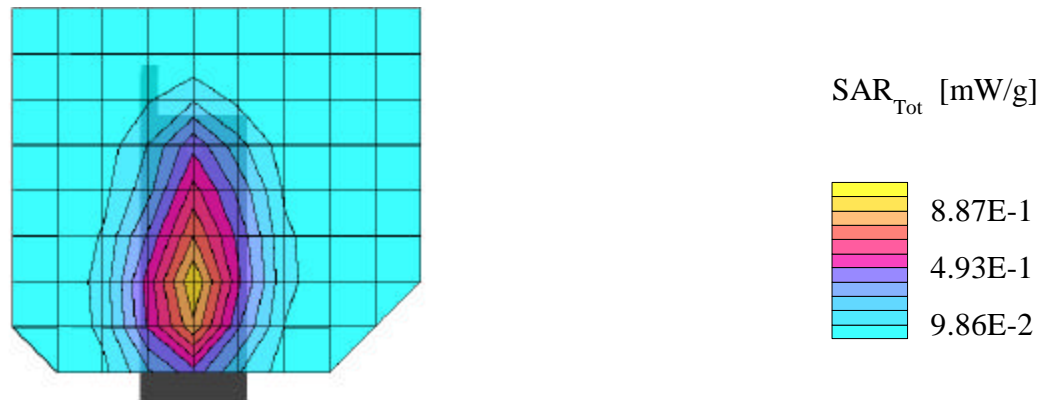
SAR (1g): 1.13 mW/g, SAR (10g): 0.746 mW/g

SAMSUNG Dual-Mode Model: SCH-620

CDMA Mode -- Ch. 0363 [835.89MHz]

Conducted Power -- 24.5dBm

Test Date(s): December 23, 1999



# FCC ID: A3LSCH620

# Body SAR

Generic Twin Phantom; Flat Section;

Probe: ET3DV5 - SN1368 -- Probe Cal Date 2/99

Medium Parameters 835 Muscle:  $\sigma = 0.95$  mho/m  $\epsilon_r = 56.2$   $\rho = 1.00$  g/cm<sup>3</sup>

Antenna Position -- Out; Crest Factor 1.0

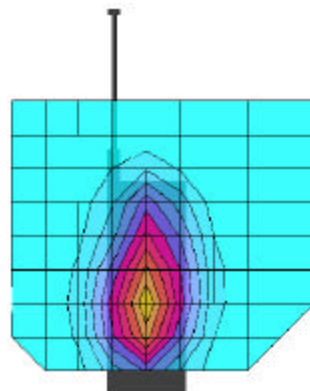
SAR (1g): 1.08 mW/g, SAR (10g): 0.717 mW/g

SAMSUNG Dual-Mode Model: SCH-620

CDMA Mode -- Ch. 0363 [835.89MHz]

Conducted Power -- 24.5dBm

Test Date(s): December 23, 1999



SAR<sub>Tot</sub> [mW/g]

